

# **WELCOME NEW YELLOW JACKETS!**



**ST. AUGUSTINE HIGH SCHOOL**

**DR. DEARMAS GRAHAM, PRINCIPAL**



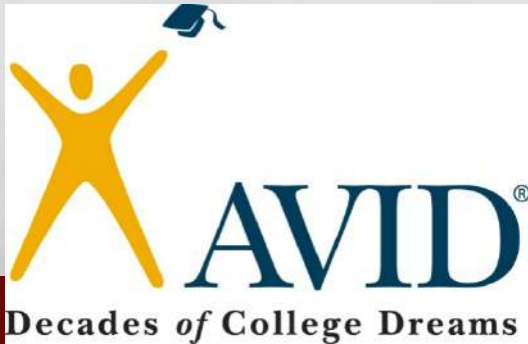
# **OUR MISSION**

**ST. AUGUSTINE HIGH SCHOOL WILL PREPARE ALL STUDENTS FOR COLLEGES AND CAREERS THROUGH RIGOROUS AND DIVERSE PROGRAMS OF STUDY WHICH INSPIRE GOOD CHARACTER AND INDIVIDUAL TALENTS AND ABILITIES VIA AN ACCEPTING AND REWARDING ENVIRONMENT.**

# WHO ARE WE?



**Law &  
Homeland  
Security**



# **INTRODUCTIONS**

## **ASSISTANT PRINCIPALS**

**GEORGE MASTORIDIS, ESE AND FACILITIES**

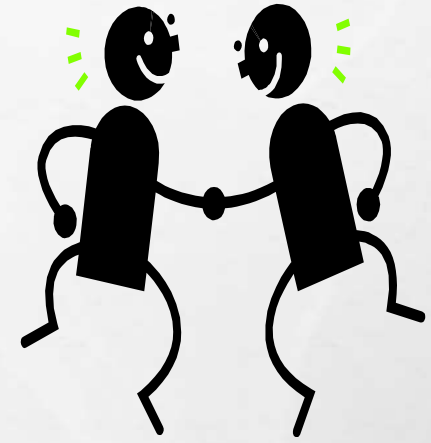
**TRAVIS BROWN, GUIDANCE AND CURRICULUM**

**JILL LEE, ATTENDANCE AND COMMUNICATIONS**

**REGISTRAR, EARL BROWN**

**ATHLETIC DIRECTOR, JEFF HOLLAND**

**CAREER ACADEMY PROGRAM SPECIALIST, KATIE MALTBY**





# LINK CREW

SUZANNE STAUBLE AND BOBBY ESGUERRA, SPONSORS

WHAT IS LINK CREW?!?!



# **ACADEMICS**

**TRAVIS BROWN, ASSISTANT PRINCIPAL**



# 9<sup>TH</sup> GRADE SCHEDULES INCLUDE:

- **ENGLISH**
- **MATH**
- **SCIENCE**
- **HOPE**
- **ACADEMY CLASS OR TEEN LEADERSHIP**
- **ELECTIVES**

**AICE, AVID and HONORS**  
Schedules may also include:

- **AP Human Geography**
- **World Language**

# WHAT IS HOPE?

- **HEALTH OPPORTUNITIES IN PHYSICAL EDUCATION**
- **REQUIRED FOR GRADUATION**
  - **CAN BE SUBSTITUTED FOR BY 2 YEARS OF JROTC**
  - **STUDENTS COMPLETING THE AICE CURRICULUM ARE EXEMPT**
- **PE UNIFORM IS REQUIRED – COST \$20 (FOR SALE THURSDAY)**





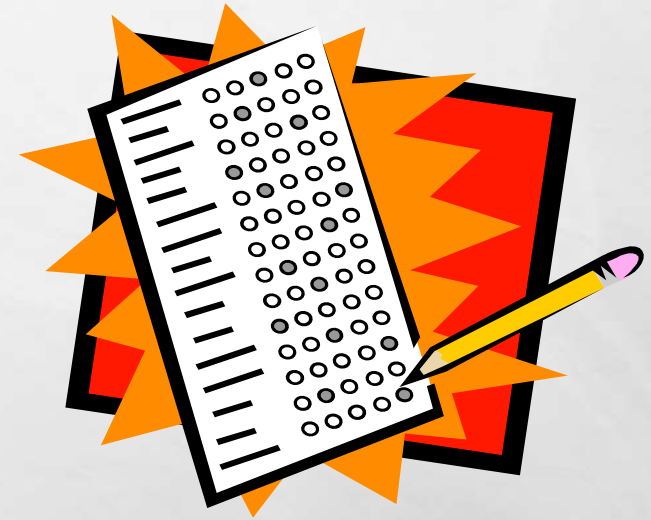
# GRADE POINT AVERAGE (G.P.A.)

- **EVERY SEMESTER GRADE IS PART OF YOUR G.P.A.**
  - **A = 4 POINTS**
  - **B = 3 POINTS**
  - **C = 2 POINTS**
  - **D = 1 POINT**
  - **F = 0 POINTS**
- **WEIGHTED COURSES EARN EXTRA VALUE**
  - **HONORS AND PRE-AICE (+0.5)**
  - **AICE, AP AND DUAL ENROLLMENT (+1.0)**

**To graduate from  
HS – you must  
have a  
cumulative G.P.A.  
of 2.0 or higher!**

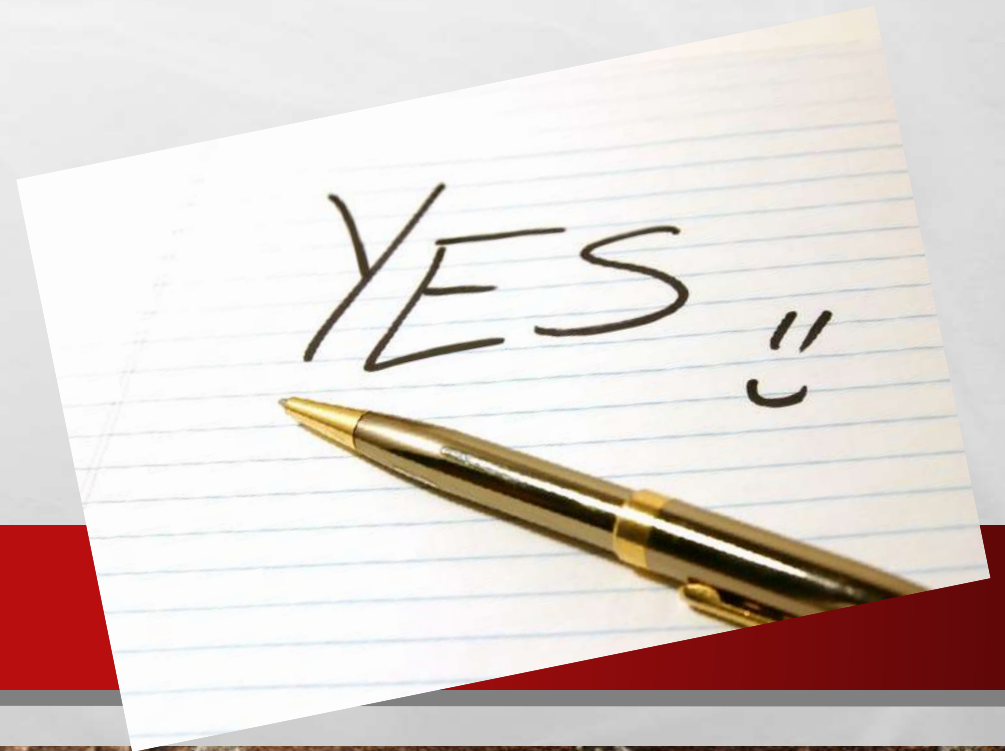
# END OF COURSE EXAMS (EOC)

- **STATE TEST GIVEN AT THE END OF A PARTICULAR COURSE**
- **COUNTS AS 30% OF YOUR YEAR-LONG GRADE FOR THAT COURSE**
- **ALGEBRA 1, GEOMETRY, BIOLOGY, US HISTORY, ALGEBRA 2**
- **YOU MUST PASS THE ALGEBRA 1 EOC TO GRADUATE!**



# PROMOTION POLICY

- **MOVING ON TO 10<sup>TH</sup>  
GRADE REQUIRES 5  
TOTAL CREDITS**



# HOW CAN I HELP MY CHILD SUCCEED?

**JILL LEE, ASSISTANT PRINCIPAL**

- **CHECK HOME ACCESS CENTER FREQUENTLY - [HTTP://WWW.STJOHNS.K12.FL.US/HAC/](http://www.stjohns.k12.fl.us/hac/)**
- **TALK TO YOUR STUDENTS ABOUT WHAT THEY ARE LEARNING**
- **CHECK THE SAHS WEBSITE AND TEACHERS WEBSITES OR EDMODO**
- **EMAIL OR CALL TEACHERS IF YOU HAVE A QUESTION**
- **SET UP A PARENT TEACHER CONFERENCE WITH THE TEACHER**
- **IF THEY ARE STRUGGLING – JACKET PREP AFTER SCHOOL TUTORING WEDNESDAYS – INCLUDING TRANSPORTATION!**
- **SCHEDULE HOMEWORK TIME EVERY NIGHT AND CHECK NOTEBOOKS**

# GUIDANCE COUNSELORS

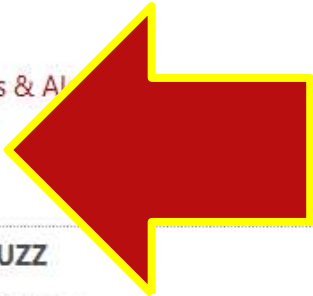
- **AICE - MS. BECHTLE**
- **A-G – MS. CASHWELL**
- **H-O – MS. NOVELLY**
- **P-Z – MS. BENNETT**



# St. Augustine High School

## MAIN MENU

- Home
- Athletics
- Departments
- Events
- Home Access Center
- Media Center
- News
- SAC
- Messages & Alerts
- Staff



## DAILY BUZZ

Friday 05/30/14

Thursday 05/29/14

If you are a person with a disability who needs assistance and planning to attend a school meeting or program, please contact SAHS with your specific need at 547-8530.

## Welcome to St. Augustine High

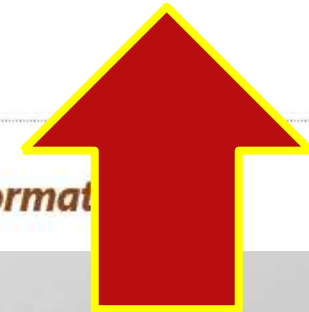


St. Augustine High School

## Jacket Life



Hi Yellow Jackets! Click on me for [additional school information](#).



## Important Dates / Information

# **GET THE LATEST INFORMATION**

- **SIGN UP TO RECEIVE WEEKLY TEXT MESSAGES**
- **TAKE OUT YOUR PHONE AND GO TO TEXTS**
- **ENTER 81010 (IN PLACE OF A NAME)**
- **TEXT @JACKETS161**

# **ATHLETICS**

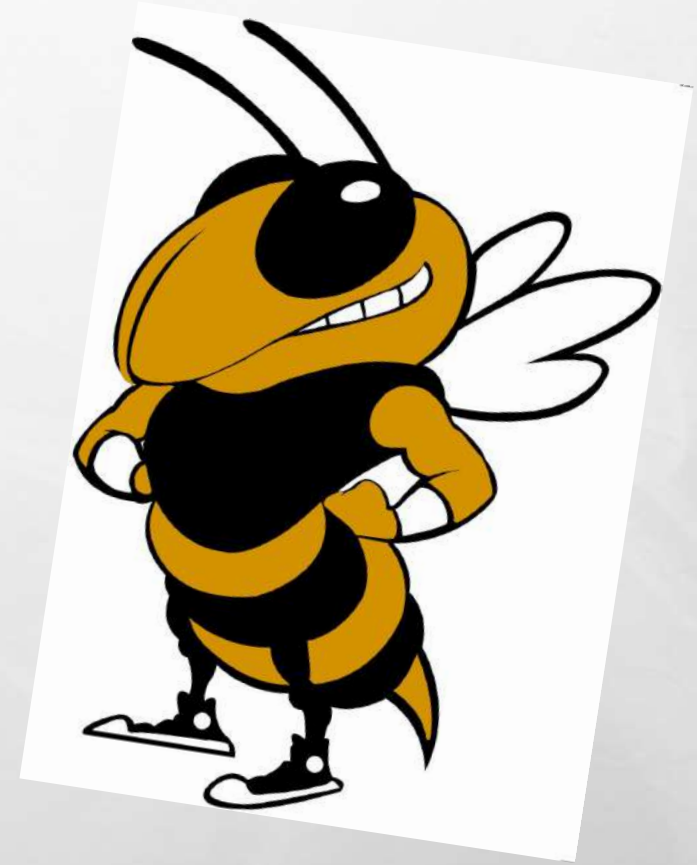
**JEFF HOLLAND, ATHLETIC DIRECTOR**





# TRADITIONS AND SPORTS

- **WHY THE YELLOW JACKETS?**
- **RECENT ATHLETIC ACCOMPLISHMENTS**
- **HOW TO GET INVOLVED WITH ATHLETICS AT SAHS**



# ATHLETICS AT SAHS

<b>Baseball</b>	<b>Basketball</b>	<b>Cross Country</b>	<b>Football</b>
<b>Golf</b>	<b>Lacrosse</b>	<b>Soccer</b>	<b>Softball</b>
<b>Swimming</b>	<b>Tennis</b>	<b>Track and Field</b>	<b>Volleyball</b>
<b>Weightlifting</b>	<b>Wrestling</b>		

# CLUBS AND ACTIVITIES

<b>National Honor Society</b>	<b>Dance Team</b>	<b>Band</b>	<b>Chorus</b>	<b>Drama</b>
<b>Musical Theater</b>	<b>Sports</b>	<b>Class Officers</b>	<b>Hi-Q</b>	<b>Book Club</b>
<b>French Club</b>	<b>Writing Club</b>	<b>Yearbook</b>	<b>Relay for Life</b>	<b>Spirit Week</b>
<b>JROTC</b>	<b>Cheerleading</b>	<b>Spanish Club</b>	<b>Key Club</b>	<b>Interact</b>
<b>Beta Club</b>	<b>Marine Science Club</b>	<b>Equality Club</b>	<b>Africlub</b>	<b>AICE Advisory Board</b>

**Get involved!**

# **BEHAVIOR EXPECTATIONS**

**ALBERTO CRESPO AND WANDA RAY, DEANS**



# 5 WAYS TO STAY OUT OF THE DEAN'S OFFICE

## 1. MANAGE YOUR CELL PHONE

**(BEFORE YOU ENTER SCHOOL, PUT IT AWAY!)**

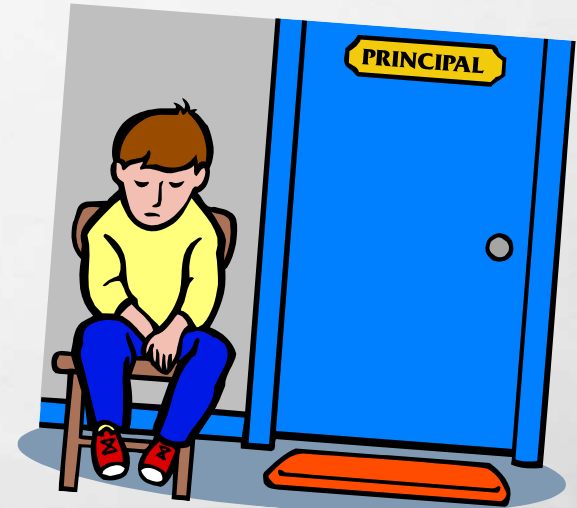
## 2. COMPLY WITH THE DRESS CODE

## 3. BE ON TIME/AVOID TARDIES

## 4. ATTEND CLASS/ AVOID SKIPPING

## 5. BE RESPECTFUL TOWARDS STAFF & PEERS

**\*READ THE 2016-2017 STUDENT CODE OF CONDUCT AND THE SAHS STUDENT HANDBOOK ABOUT EXPECTATIONS AND POLICIES.**



# DRESS CODE REMINDERS

- **READ SAHS PLANNER (DRESS CODE/PERSONAL APPEARANCE)**

- **LADIES**

- **NO LOW CUT SHIRTS, NO EXPOSED MIDRIFTS**
- **SHORTS/SKIRTS/DRESSES MUST BE NO MORE THAN 4 IN ABOVE THE KNEE**
- **NO YOGA PANTS, MESH, LEGGINGS, TIGHT STRETCHY SKIRTS**
- **NO EXPOSED UNDERGARMENTS**

- **GENTLEMEN**

- **PANTS WORN AT THE WAIST**

**Note: Clothes must be in dress code at ALL times – sitting, standing, walking, etc. If at any point the clothes are out of dress code compliance, you are considered “out of dress code” and will have to change clothes or go to I.S.S.**

**BE HERE, EVERY DAY, ON TIME, DRESSED  
FOR SUCCESS AND READY FOR SCHOOL.**

**ACT RESPECTFULLY AND RESPONSIBLY**

**STAY OUT OF THE DEAN'S OFFICE**



# PARENTS AND STUDENTS

- **NEW SCHOOL YEAR FORMS-(COMPLETE AND HAVE YOUR STUDENT RETURN TO HIS/HER HOMEROOM TEACHER ASAP)**
- **READ THE 2016-2017 STUDENT CODE OF CONDUCT AT [HTTP://WWW.STJOHNS.K12.FL.US/SCHOOLSERVICES/CONDUCT/](http://www.stjohns.k12.fl.us/schoolservices/conduct/) AND THE SAHS STUDENT HANDBOOK ABOUT EXPECTATIONS AND POLICIES.**



# **ORIENTATION & FIRST DAY OF SCHOOL**

**GEORGE MASTORIDIS, ASSISTANT PRINCIPAL**



# MONDAY AUGUST 8<sup>TH</sup> – 9AM-12PM -

## Freshmen Link Crew Orientation **in the Gym**

### **BRING:**

- **SMILES AND ENTHUSIASM**
- **STUDENT INFORMATION VERIFICATION SHEET**
- **COMBINATION LOCK FOR LOCKER**

### **YOU WILL RECEIVE:**

- **SCHEDULE**
- **SCHOOL ID**
- **LOCKER (IF YOU BRING A LOCK!)**
- **TOUR OF THE SCHOOL FROM YOUR LINK CREW LEADER!**

# LOCKERS

- **IF YOU WANT A LOCKER, YOU MUST BRING A COMBINATION LOCK**
- **NO KEY LOCKS ALLOWED**
- **YOUR LOCKER WILL BE ASSIGNED TO YOU**
- **IF YOU DON'T HAVE A LOCK, YOU CAN GET A LOCKER THE FIRST WEEK OF SCHOOL DURING LUNCH**



# **FIRST DAY OF SCHOOL**

**GEORGE MASTORIDIS, ASSISTANT PRINCIPAL**



# WHAT TO EXPECT

- **GO TO HOMEROOM FIRST**
- **HOMEROOM LISTS WILL BE POSTED IN THE MORNING (LOOK FOR THEM WHEN YOU GET TO SCHOOL!)**
- **RECEIVE: UPDATED SCHEDULE, FORMS TO BE SIGNED AND RETURNED, PLANNER, SCHOOL BAG, LUNCH FORMS, ETC.**
- **LUNCH ASSIGNED BY 4<sup>TH</sup> PERIOD TEACHER**
- **EACH TEACHER WILL GIVE YOU A SYLLABUS (SUPPLY REQUIREMENTS, GRADING, ETC.)**

# USE YOUR PLANNER!!

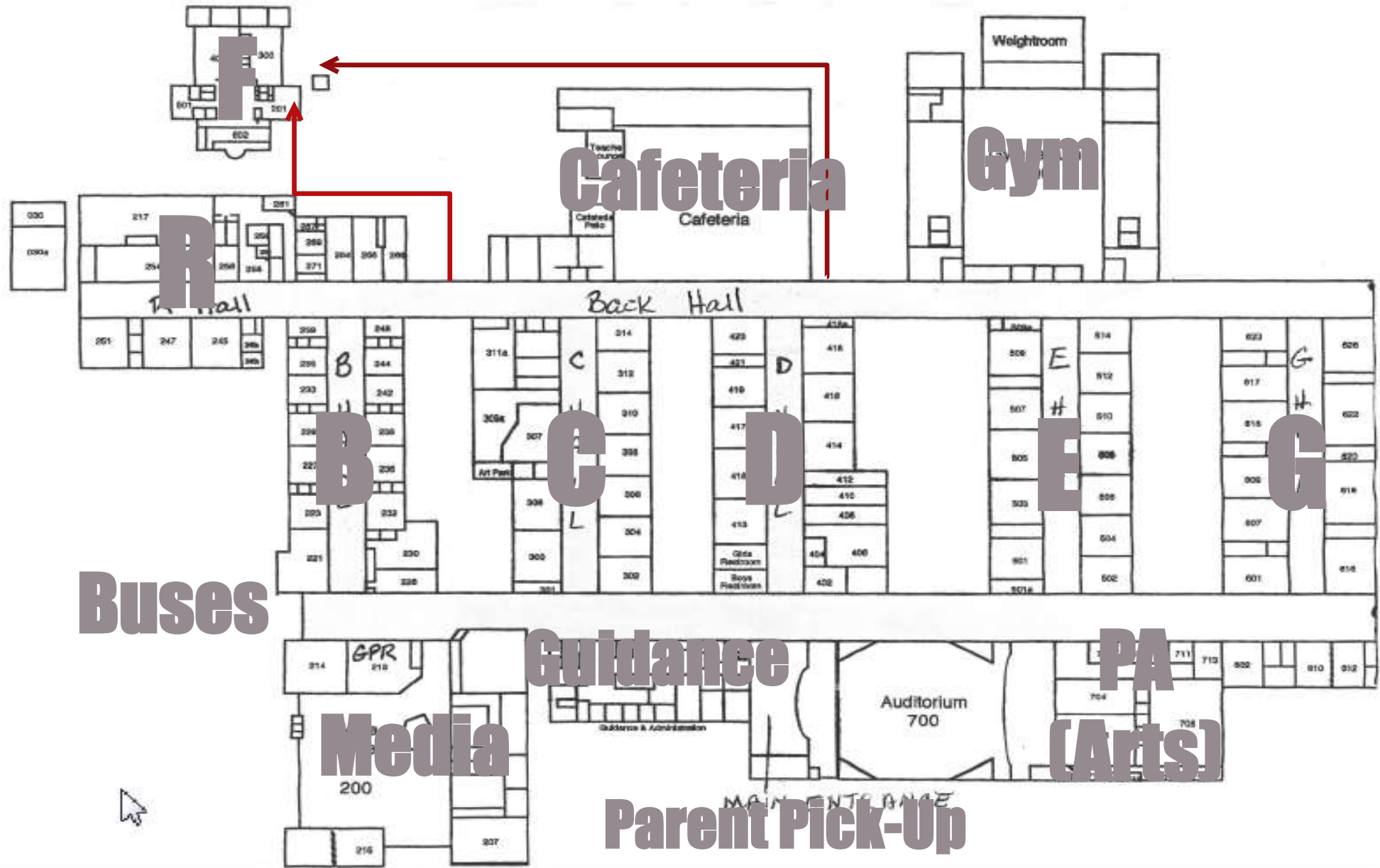
- **IMPORTANT INFORMATION**
  - **RULES, POLICIES, PROCEDURES**
- **GREAT ORGANIZATIONAL TOOL**
  - **RECORD ASSIGNMENTS AND DUE DATES**
- **SERVES AS YOUR HALL PASS!**



# DAILY SCHEDULE

- **STUDENTS HAVE 7 PERIODS OF CLASSES**
- **YOU GO TO ALL CLASSES EACH DAY**
- **WEDNESDAYS ARE 1 HOUR EARLY RELEASE (35 MINUTE CLASSES, DISMISSED AT 2:52PM)**

- **1<sup>ST</sup> PERIOD: 9:15-10:05**
- **2<sup>ND</sup> PERIOD: 10:10-10:55**
- **3<sup>RD</sup> PERIOD: 11:00-11:45**
- **4<sup>TH</sup> PERIOD (+ LUNCH): 11:50-1:20**
- **5<sup>TH</sup> PERIOD: 1:25-2:10**
- **6<sup>TH</sup> PERIOD: 2:15-3:00**
- **7<sup>TH</sup> PERIOD: 3:05-3:52**



Cafeteria

Gym

R

Front Hall

Back Hall

B

C

D

E

G

Buses

Guidance

PA

Media

(Arts)

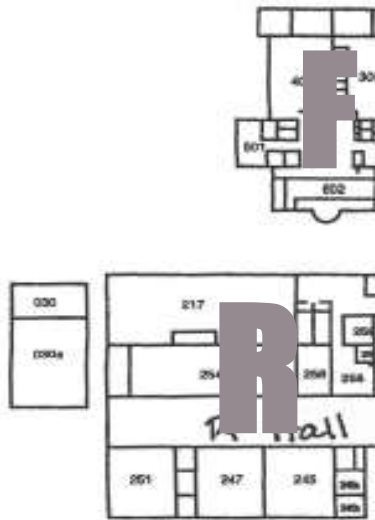
Parent Pick-Up

Auditorium 700

MAIN ENTRANCE







**Buses**



**Lost???**  
**ASK A**  
**LINK**  
**LEADER!!!!!!**



**PA**  
**(ts)**

**HIGH SCHOOL STARTS  
AUGUST 10<sup>TH</sup> AT 9:15**

**“BEE GREAT”**

