

RED FORM

New Notes: E and D

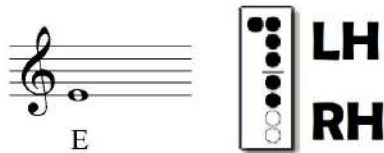
Test Piece: Old McDonald

Play the following exercises on new note E.

Remember to clap the rhythm first.

Written Work:

Circle all of the rests in each exercise for the Red Form.



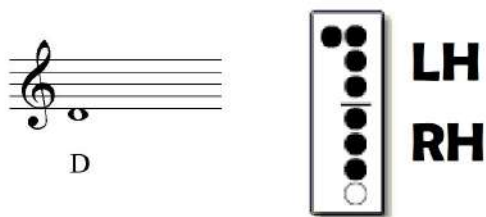
Hint: $3 + 2 = 5$ What is the 5th note of the alphabet? E

What is the name of this note? E



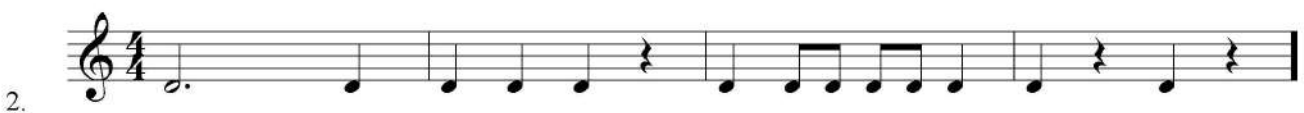
Play the following exercises on new note D.

Remember to clap the rhythm first.



Hint: $3 + 3 = D$ - Down Under

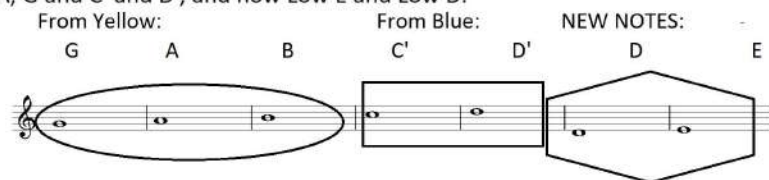
(Low D is a space note that is "hanging out" down under the staff.



You have now learned 7 notes: B, A, G and C' and D', and now Low E and Low D.

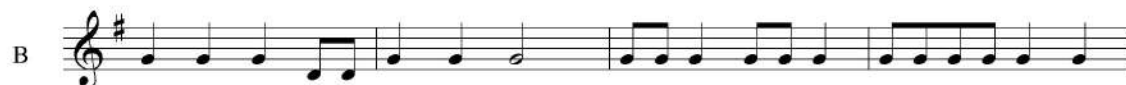
Fill in the names of each note

that has a line under it.



Now you are ready to take the Red Test. Play the 1st two measures of "Old McDonald."

Hint: Play 3 G's and then play the word "D E E D" using your 2 new notes



Continue on to page 3 of the Red Form and practice drawing Treble Clef symbols and practice naming pitches on the Treble staff.

The Staff - Treble Clef

At the beginning of each staff there is a clef. The treble clef (also known as G clef) looks like this:



The treble clef gives establish a landmark on the note G on 2nd line of the treble staff.

To draw the treble clef, draw:
the line and tail



1.

the top loop



2.

the left loop



3.

the right loop



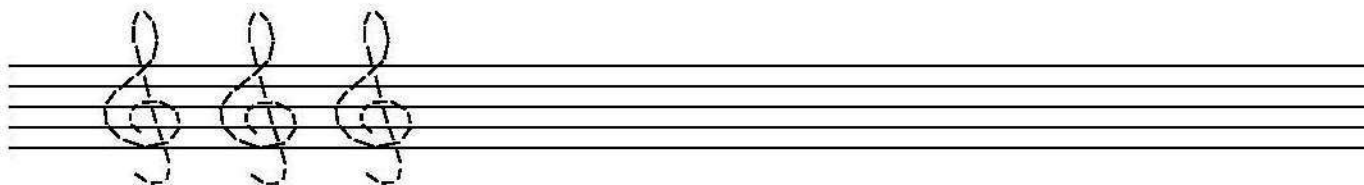
4.

the c



5.

1. Try drawing the treble clef sign by tracing over the dotted lines. Then draw five more of your own.



2. Draw a treble clef at the beginning of the staff. Then write the letter names of each note.



Congratulations! You have now earned the Red Stripe on your Soprano Recorder!

Music Teacher Signature

Date