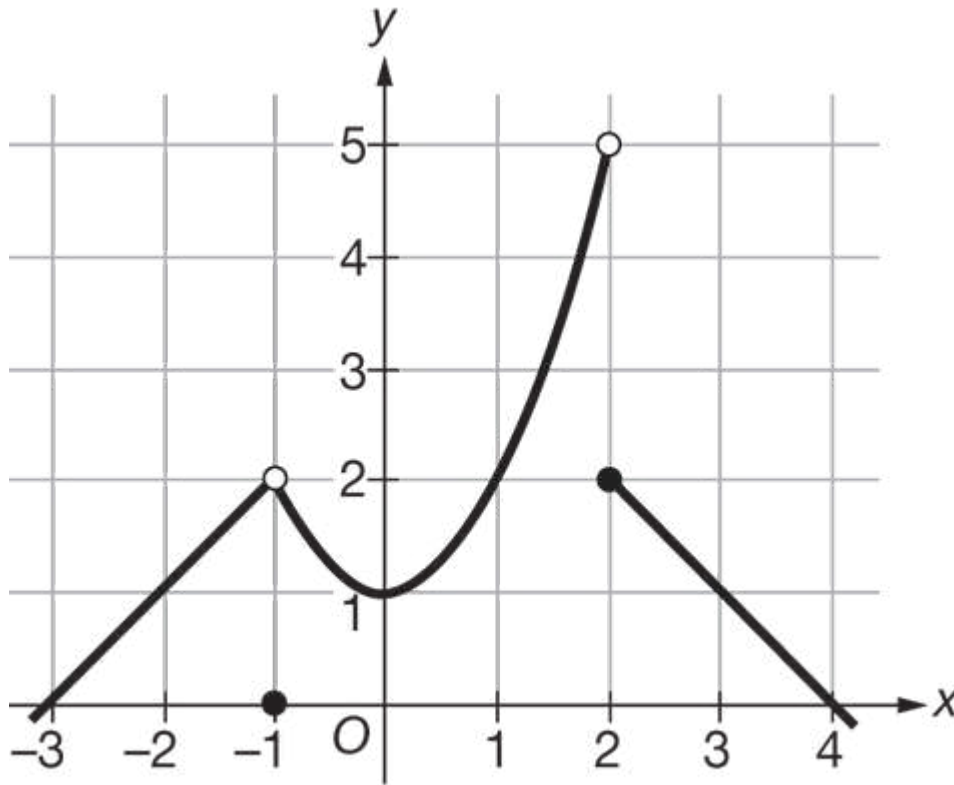


Quiz 1.5

Name _____

1.

Graph of f

The graph of the function f is shown above. What is $\lim_{x \rightarrow -1} f(f(x))$?

- (A) 1
- (B) 2
- (C) 5
- (D) nonexistent

2.
$$f(x) = \begin{cases} 5x - 3 & \text{for } x < 2 \\ 9 & \text{for } x = 2 \\ 4x + 3 & \text{for } x > 2 \end{cases}$$

Let f be the piecewise function defined above. The value of $\lim_{x \rightarrow 2^+} f(x)$ is



Quiz 1.5

- (A) 7
- (B) 9
- (C) 11
- (D) nonexistent

3.

$f(2) = 3$	$\lim_{x \rightarrow 2} f(x) = 4$
$g(2) = -6$	$\lim_{x \rightarrow 2} g(x) = -6$
$h(2) = -3$	$\lim_{x \rightarrow 2} h(x) = 2$

The table above gives selected values and limits of the functions f , g , and h . What is $\lim_{x \rightarrow 2} (h(x)(5f(x) + g(x)))$?

- (A) -27
- (B) -20
- (C) 28
- (D) 34