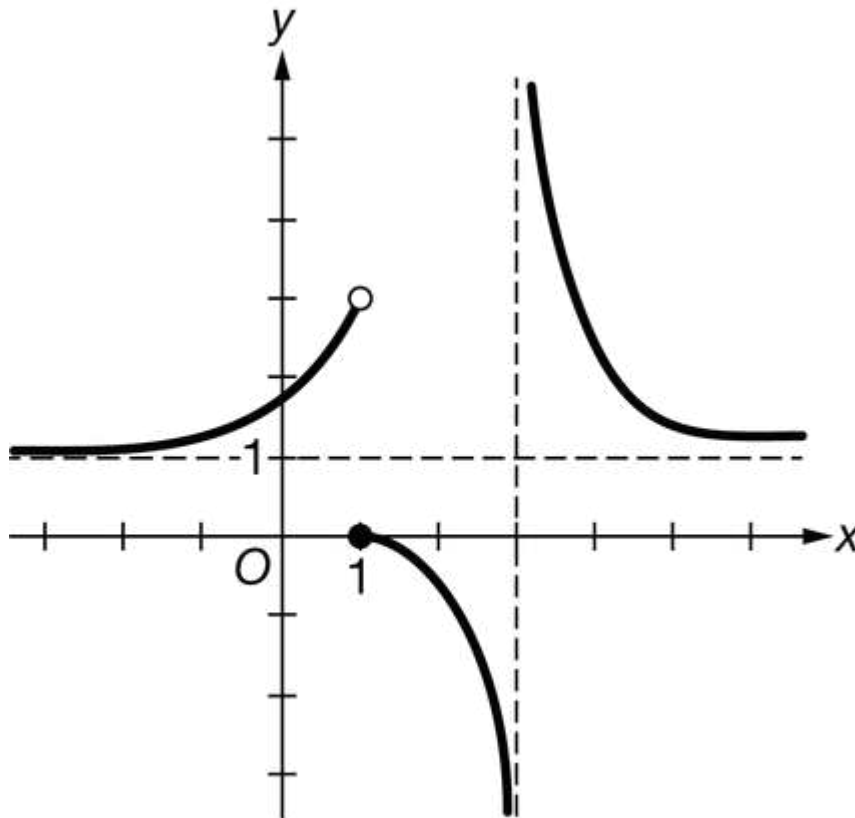


Quiz 1.3

Name _____

1.

Graph of f

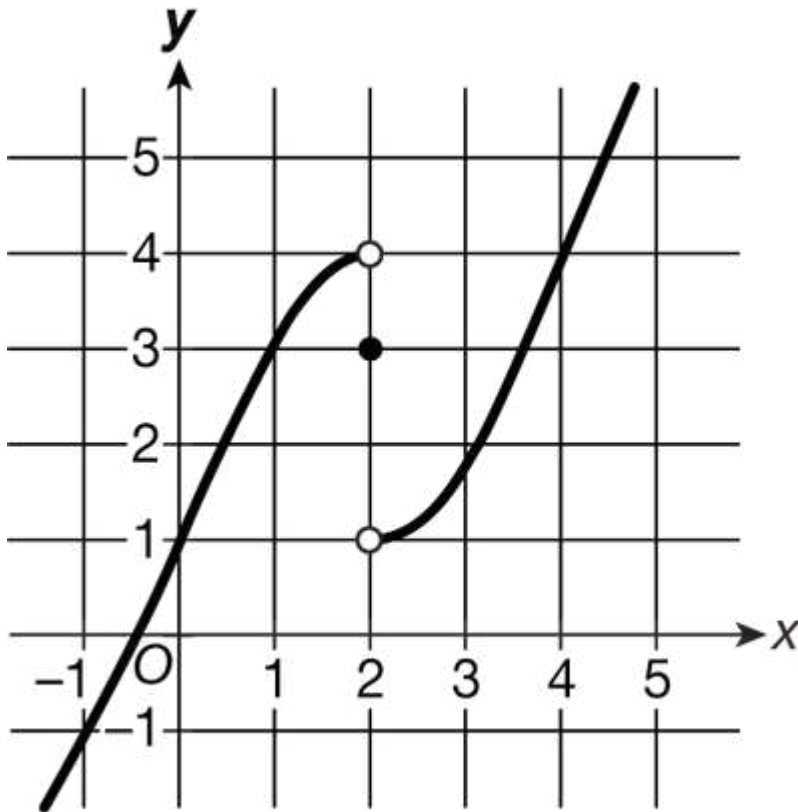
The graph of a function f is shown above. Which of the following statements is true?

- (A) $\lim_{x \rightarrow 1} f(x) = 1.5$
- (B) $\lim_{x \rightarrow 1} f(x) = 0$
- (C) $\lim_{x \rightarrow 1} f(x)$ does not exist because the left-hand and right-hand limits of $f(x)$ as x approaches 1 do not exist.
- (D) $\lim_{x \rightarrow 1} f(x)$ does not exist because while the left-hand and right-hand limits of $f(x)$ as x approaches 1 exist, their values are not equal.



Quiz 1.3

2.

Graph of f

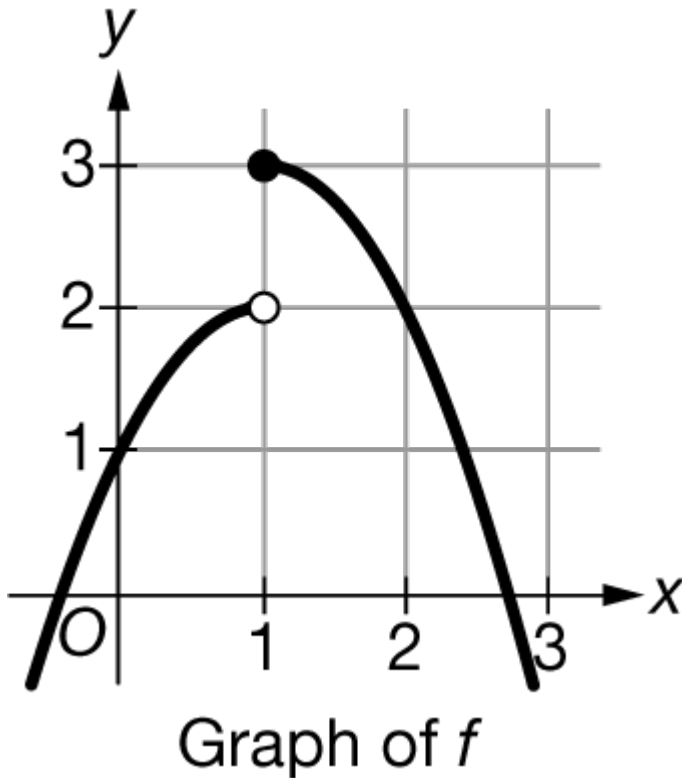
The graph of the function f is shown above. What is $\lim_{x \rightarrow 2^+} f(x)$?

- (A) 1
- (B) 3
- (C) 4
- (D) nonexistent



Quiz 1.3

3.



The graph of a function f is shown above. Which of the following statements is true?

- (A) $\lim_{x \rightarrow 1} f(x) = 2.5$
- (B) $\lim_{x \rightarrow 1} f(x) = 3$
- (C) $\lim_{x \rightarrow 1} f(x)$ does not exist because the left-hand and right-hand limits of $f(x)$ as x approaches 1 do not exist.
- (D) $\lim_{x \rightarrow 1} f(x)$ does not exist because while the left-hand and right-hand limits of $f(x)$ as x approaches 1 exist, their values are not equal.