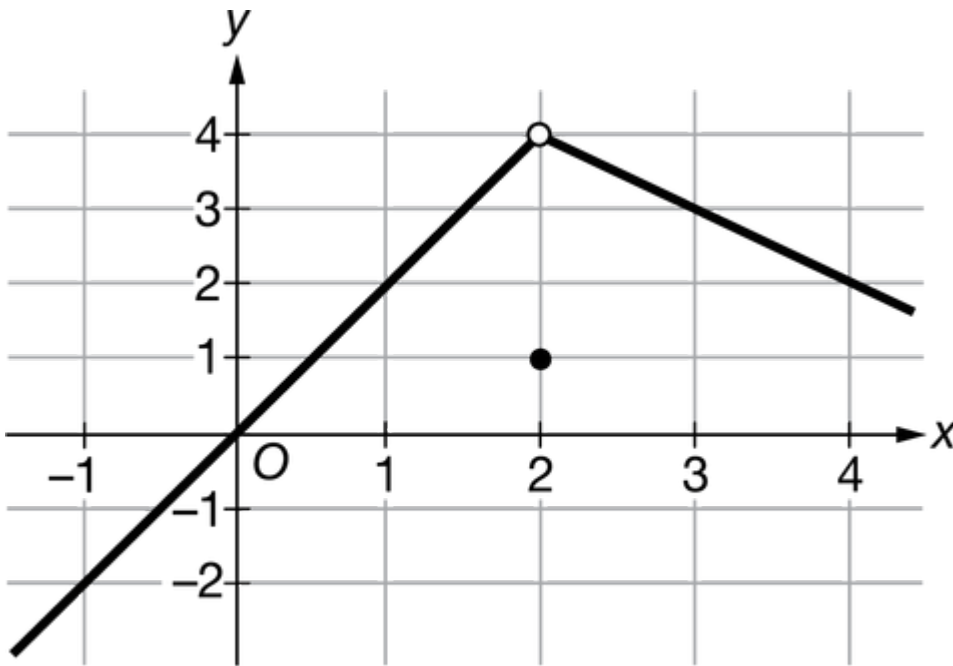


## Quiz 1.2

Name \_\_\_\_\_

1.

Graph of  $f$ 

The graph of the function  $f$  is shown above. What is  $\lim_{x \rightarrow 2} f(x)$ ?

- (A)  $\frac{1}{2}$
- (B) 1
- (C) 4
- (D) The limit does not exist.

2. Of the following tables, which best reflects the values of a function  $g$  for which  $\lim_{x \rightarrow 7} g(x) = 6$ ?



## Quiz 1.2

Ⓐ	$x$	5.85	5.90	5.95	5.99	6.01	6.05	6.10	6.15
	$g(x)$	7.126	7.075	7.033	7.006	6.995	6.977	6.964	6.960
Ⓑ	$x$	6.85	6.90	6.95	6.99	7.01	7.05	7.10	7.15
	$g(x)$	5.620	5.837	5.961	5.998	5.999	5.964	5.863	5.709
Ⓒ	$x$	6.85	6.90	6.95	6.99	7.01	7.05	7.10	7.15
	$g(x)$	5.919	5.942	5.969	5.993	7.017	7.087	7.177	7.269
Ⓓ	$x$	6.85	6.90	6.95	6.99	7.01	7.05	7.10	7.15
	$g(x)$	1.362	5.954	10.691	14.690	6.010	6.049	6.095	6.140

3. Let  $f$  be a function that is defined for all real numbers  $x$ . Of the following, which is the best interpretation of the statement  $\lim_{x \rightarrow 3} f(x) = 5$ ?
- Ⓐ The value of the function  $f$  at  $x = 3$  is 5.
- Ⓑ The value of the function  $f$  at  $x = 5$  is 3.
- Ⓒ As  $x$  approaches 3, the values of  $f(x)$  approach 5.
- Ⓓ As  $x$  approaches 5, the values of  $f(x)$  approach 3.