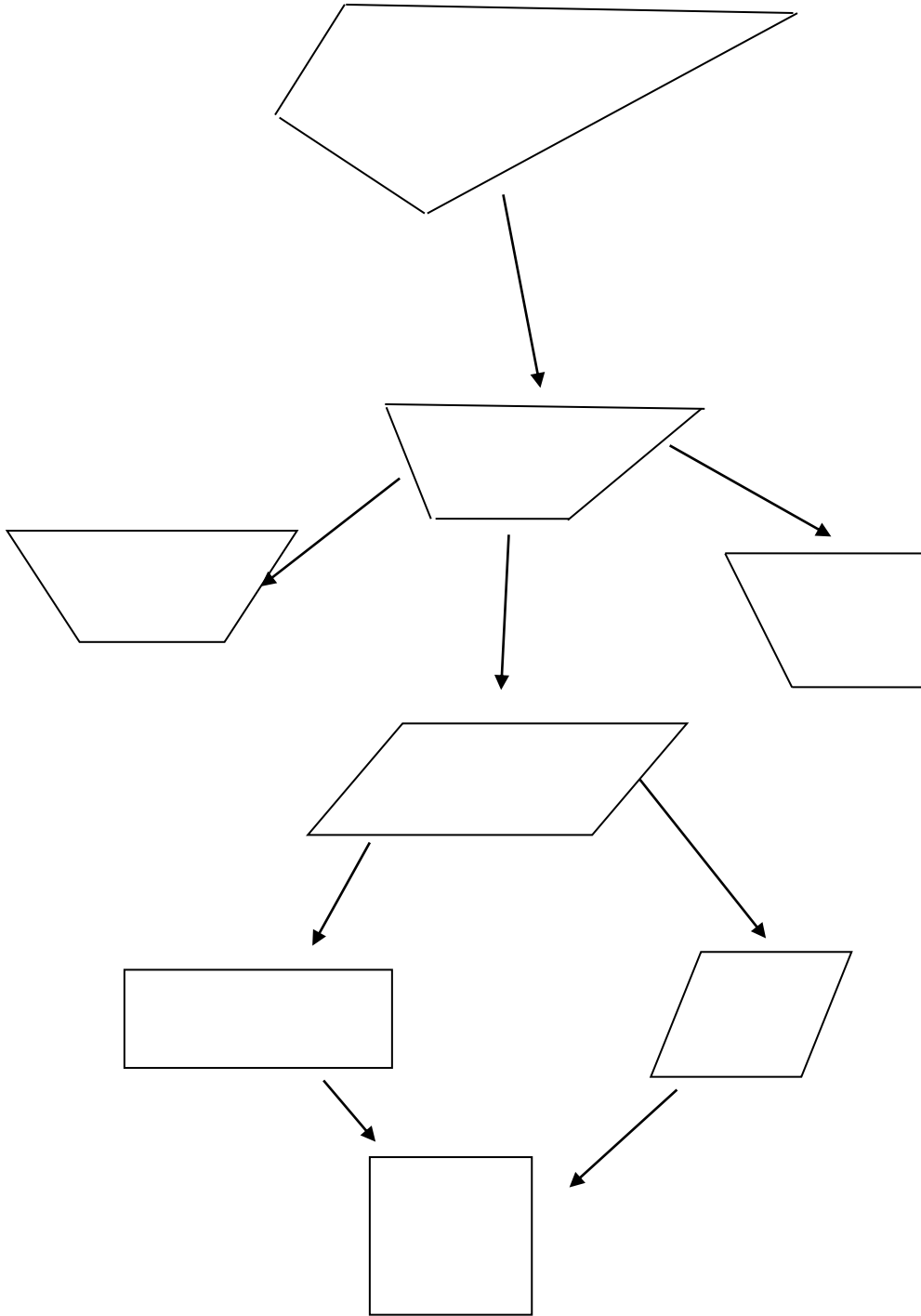


Quadrilateral Hierarchy



Quadrilateral- a four-sided polygon

Trapezoid- a quadrilateral with at least 1 pair of parallel sides

Isosceles Trapezoid- a trapezoid with congruent legs

Right Trapezoid- a trapezoid with 2 right angles

Parallelogram- a trapezoid (or a quadrilateral) with 2 pairs of parallel sides

Rectangle- a parallelogram (or a quadrilateral) with 4 right angles

Rhombus- a parallelogram (or a quadrilateral) with 4 congruent (=) sides

Square- a parallelogram (or a quadrilateral) with 4 right angles and 4 congruent (=) sides
OR **Square-** a rhombus with 4 right angles
OR **Square-** a rectangle with 4 congruent (=) sides

Quadrilateral Hierarchy

