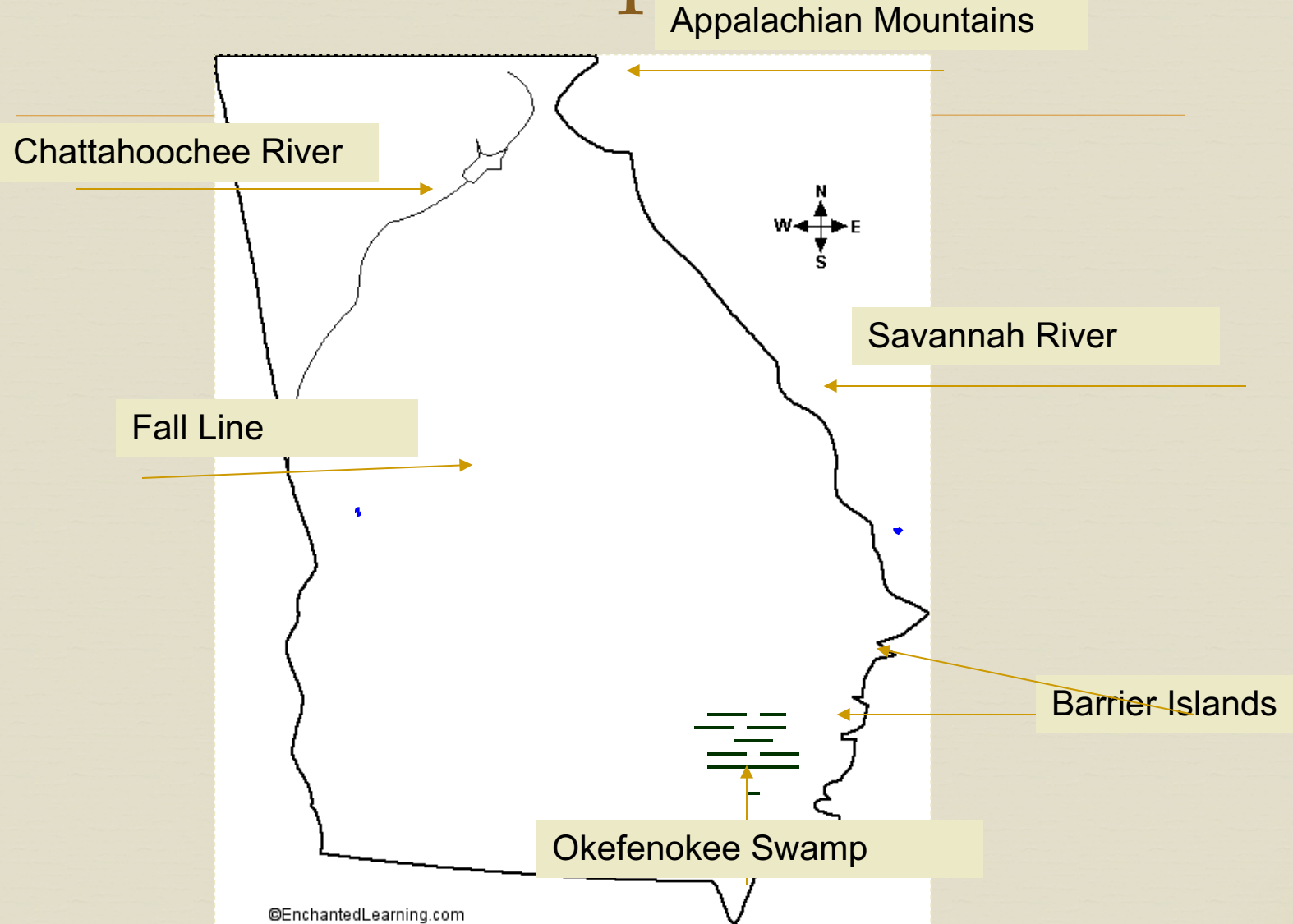


How have Georgia's
physical features affected its
development?(8G1c)



Draw these features on your map.



As each slide is shown,
write the information in
the appropriate column
of the chart on the back
of your map.

Fall Line



Location

- ❧ Separates the Piedmont from the Coastal Plain
- ❧ Runs across the state and includes Columbus, Macon, and Augusta

Importance

- ❧ Stopped earliest settlers from coming further inland, so many early settlements were here
- ❧ Power source for earliest inhabitants through modern textile mills



Small waterfalls like this are along the Fall Line.

Okefenokee Swamp



Location

- ❧ Southeast Georgia
- ❧ Outer Coastal Plain near Waycross and Folkston

Importance

- ❧ Important ecosystem that is home to many species of animals, including some that are endangered
- ❧ Attracts tourists and research scientists
- ❧ Is the largest black water swamp in the U.S.



Dark waters of the Okefenokee Swamp

Appalachian Mountains



Location

- ❧ Northeast Georgia
- ❧ Also called Blue Ridge Mountains

Importance

- ❧ Precipitation from here supplies water to whole state
- ❧ Tourism brings visitors with money
- ❧ Retirees move to area



Amicalola Falls is the highest waterfall east of the Mississippi River.

Chattahoochee River



Location

- ❧ Begins in the north Georgia mountains
- ❧ Flows southwest to Atlanta and Columbus
- ❧ Continues southward to Gulf of Mexico
- ❧ Forms part of border with Alabama

Importance

- ❧ Provides drinking water for Atlanta and other cities
- ❧ Lakes (reservoirs) that are formed from it provide recreation – boating, fishing, skiing



Chattahoochee River winds its way over much of our state.

Savannah River



Location

- ❧ Forms border between Georgia and South Carolina
- ❧ Empties into Atlantic Ocean

Importance

- ❧ One of Georgia's original boundaries
- ❧ Port of Savannah – one in 7 jobs in GA relies on goods being shipped in or out of Savannah



The Savannah River Port is the #2 export facility in the United States.

Barrier Islands



Importance

Location

- Off Georgia's mainland on the Atlantic coast

- Islands provide natural barrier to mainland from storms
- Visitors take vacations on the islands
- Important ecosystem – 1/3 of east coast's salt marshes are on GA's coast
- Jekyll – state park
- Cumberland – national seashore



Jekyll Island - one of Georgia's barrier islands

Ticket Out the Door



- ✧ Pick one of the 6 physical features and tell me where it is located in Georgia and the importance of that feature on the development of Georgia.
- ✧ Label your paper: TOD – Georgia's physical features
- ✧ Three to five complete, coherent sentences for full credit.