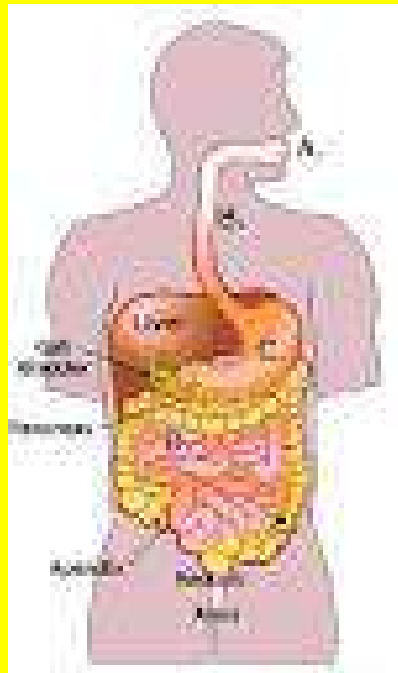
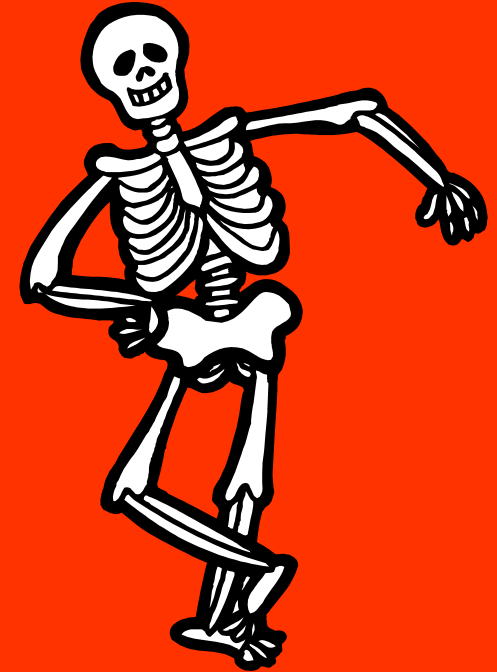


# SUMMARY OF ORGAN SYSTEMS



# Skeletal



- **Major Organs:**  
**Bones**

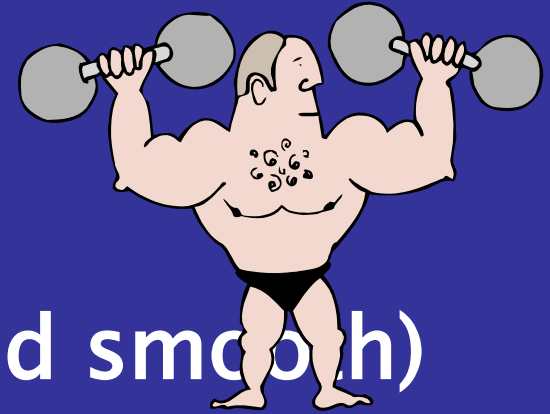
- **Function:**

**Provides structure; supports and protects internal organs**

- **Connections to other Systems:**

**Muscular System, Nervous System, Circulatory System**

# Muscular



- Major Organs:

Muscles (skeletal, cardiac, and smooth)

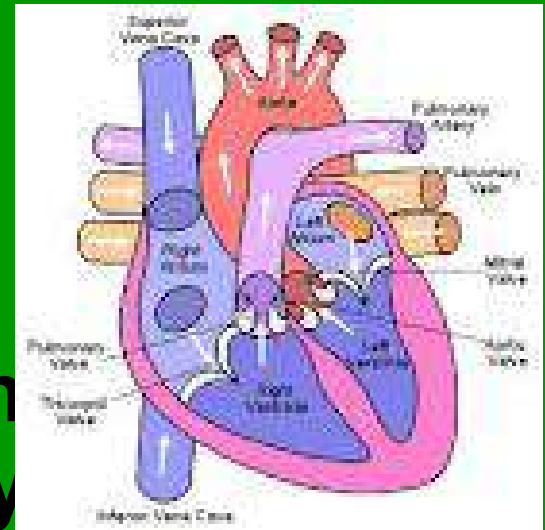
- Function: Provides structure; supports and moves trunk and limbs
- Connection to other Systems:  
Skeletal System, Circulatory System, &  
Nervous System.

# Circulatory/Cardiovascular

- Major Organs:

Heart, blood vessels, blood

- Function: Transport nutrients and wastes to and from all body



- Connection to other Systems:  
ALL other body systems!

# Circulatory/Cardiovascular

- Path of Blood:
- Heart to the body to the heart to lungs



# Respiratory

- **Major Organs:**  
**Air passages, lungs**

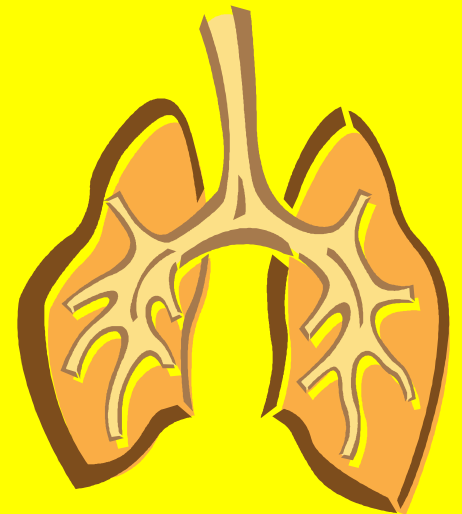
- **Function:**  
**Carries air into and out of lungs  
(oxygen and carbon dioxide)**

- **Connection to other Systems:**  
**ALL because it supplies the body with oxygen  
and takes out carbon dioxide**



# Respiratory

- Exchange of Gases:
- Oxygen ( $O_2$ ) **IN**
- Carbon Dioxide ( $CO_2$ ) **OUT**



# Immune



- **Major Organs:**

**Lymph nodes and vessels, white blood cells**

- **Function: Provides protection against infection and disease**

- **Connection to other Systems:**

**Circulatory System, Digestive System,  
Urinary/Excretory System & Nervous System.**



# Digestive

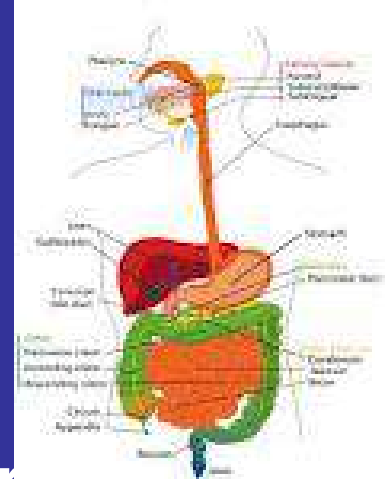
- **Major Organs:**

**Mouth, esophagus, stomach, liver, pancreas, small and large intestines**

- **Function: Stores and digests food; absorbs nutrients; eliminates wastes**

- **Connection to other Systems:**

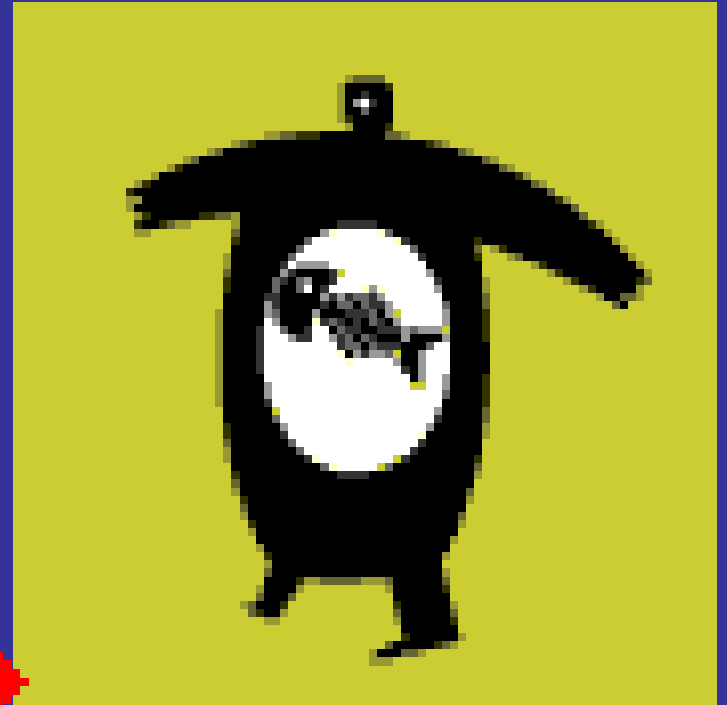
**Circulatory System, Excretory System & Nervous System.**



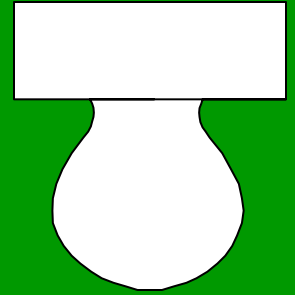
# Digestive

- Path of Food:

- MOUTH
- ESOPHAGUS
- STOMACH
- SMALL INTESTINE
- LARGER INTESTINE
- ANUS



# Urinary/Excretory



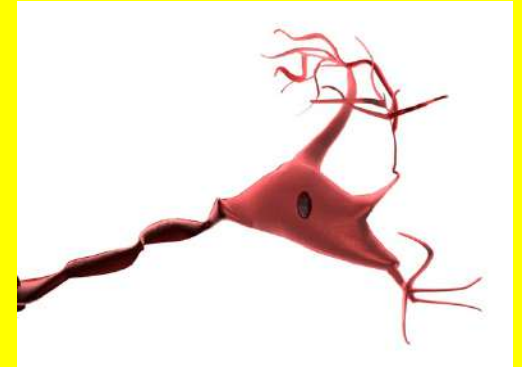
- **Major Organs:**

**Kidneys, ureters, bladder, urethra, skin, lungs**

- **Function:**

**Eliminates waste; maintains water and chemical balance**

# Nervous



- **Major Organs:**

**Brain, spinal cord, nerves, sense organs, receptors**

- **Function:**

**Controls and coordinates body movements and senses; controls consciousness and creativity; helps monitor and maintain other body systems**

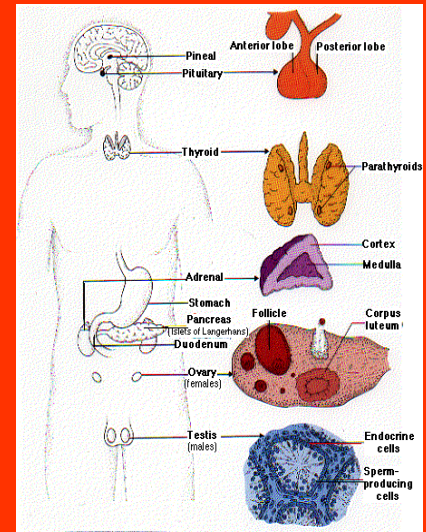
- **Connection to other Systems:**

**ALL other body systems because it send electrical signals which control their functions.**

# Endocrine

- **Major Organs:**

**Glands (such as adrenal, thyroid, and pancreas), hypothalamus**



- **Function:**

**Maintains homeostasis; regulates metabolism, water and mineral balance, growth and sexual development, and reproduction**

## **Connection to other Systems:**

**ALL other body systems because it supplies the hormones that help them function.**



# Reproductive



- **Major Organs:**

Ovaries, uterus, mammary glands (females),  
testes (males)

- **Function:**

Produces offspring

- **Connection to other Systems:**

Nervous System, Circulatory System,  
Endocrine System,

