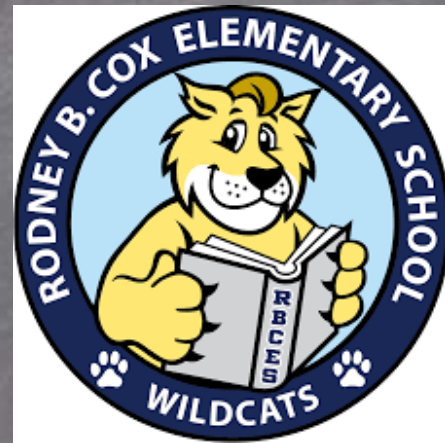


# WELCOME

## BACK to SCHOOL!



# iBienvenidos!

# Meet your **TEACHER**



Ms. Blanco  
Mom of 3

Masters Degree in Education  
Hofstra University, NY  
Class Dojo for communication  
Google Voice: 813-815-0198  
[iblanco@pasco.k12.fl.us](mailto:iblanco@pasco.k12.fl.us)





# CLASSROOM RULES

- Students must wear mask
- Recommend they wear one and have spare ones in their backpacks in case one gets soiled or misplaced.
- Recommend bringing a water bottle to eliminate the use of water fountains to drink from
- We will have one way hallways throughout the school
- Reducing the number of students at any given location
- Increased sanitation

**CONTACT ADMINISTRATION IF YOU HAVE FURTHER QUESTIONS ON THIS.**



# CLASSROOM RULES

You will be able to complete the emergency updated contact information on our website using a link.

We want to ensure we have proper contact information as well as knowing who can pick up the child.

This form should be completed before Monday, August 24th



# iMPORtANt INFORMAtION

We need their most updated email information. A lot of communication will be through email this year.

How your child is getting home from school the first day and then after that.

\*TOUR OF CLASSROOM



# CLASSROOM MANAGEMENT

Masks will be worn at all times

We will use Class Dojo daily

<https://www.classdojo.com/invite/?c=CD4MFZXTi>

Compliments

Celebrations

Lunch Buddies

# gRAding POLICY

All grades and communication related to student progress is done through the parent portal only. Call the office or visit our website for directions on starting your parent portal account

Student fees of \$29 can be paid online or by check. All students whose fees are paid by September 11th will receive a free RBCES t-shirt.

# SCHEDAILY SCHEDULE



Time	Task
8:55-9:25	IRLA
9:25-9:40	Word Analysis
9:40-10:10	ELA Whole Group
10:10-10:50	ELA Small Groups
10:50-11:15	Writing
11:15-11:45	Tier 3 Reading
11:45-12:05	Recess
12:06-12:36	Lunch
12:40-1:55	Math
1:55-2:20	Science
2:20-3:05	Specials PE/PE/MUSIC/PE/ART



# SPECIALS

DAY	SPECIAL
MONDAY	PE
TUESDAY	PE
WEDNESDAY	MUSIC
THURSDAY	PE
FRIDAY	ART

# HOMework

## Policy

Monday through Thursday

- Math daily
- Reading comprehension passages
- Writing Daily
- Practice word analysis skills
- We will be practicing written Spanish twice a week and cursive.





# LUNCH PROCEDURES

Because we have recess before lunch, students will wipe and sanitize their hands prior to eating.

Lunch will be in the cafeteria

MySchoolBucks starting August 15

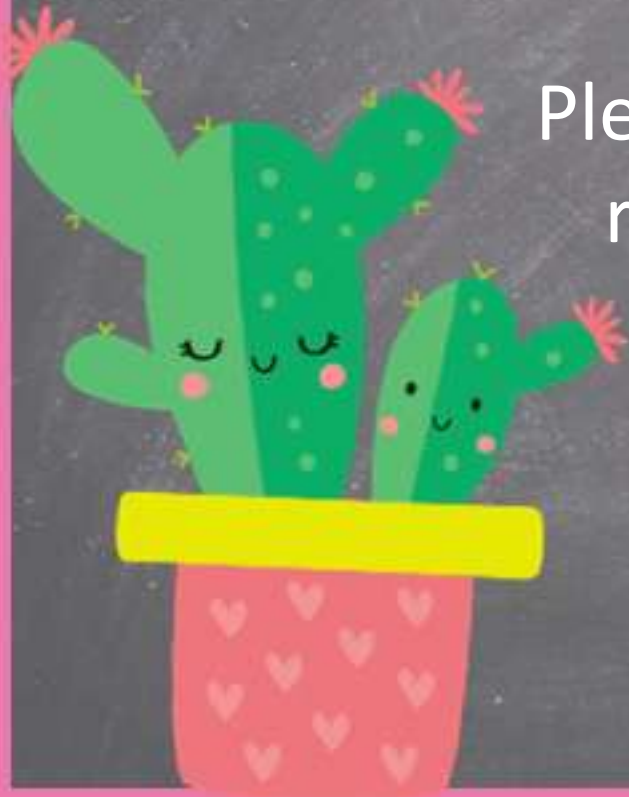
Free or reduced meals application is online!

[www.PascoSchoolMeals.com](http://www.PascoSchoolMeals.com)

# ATTENDANCE POLICY

Please contact the office if your  
child will be absent

Please be on time. The morning bell  
rings at \_\_\_\_\_. After that, your  
child will be marked late.





# DISMISSAL

The office will place a call  
All students will be dismissed from  
their classrooms.  
There will be a call per bus.

Bus routes are available on the parent portal  
Car tags will be distributed Friday, August 21st from 10:00-  
1:00 at the car loop.  
Parents picking up on Monday without a car tag will need  
to wait and be verified before child is released.



# CURRICULUM

We will follow the Canvas course from Pasco.

We will supplement language lessons with Word Analysis lessons from ReadyGen.

Math: following Eureka Modules

Science: Discovery Education in Spanish and English



# LANGUAGE

- Word Analysis and Language Lessons Monday through Thursday
- Weekly Exit tickets
- Familiarize with verbs, adjectives, nouns, pronouns, parts of a sentence, parts of a word.



# READING

We will be using the Canvas course, along with DBQ passages to learn Grade 3 reading standards.

Exit tickets will be done weekly to gauge understanding and do error analysis.





# WRITING

First weeks of instruction: Social Emotional  
writing

Writing assignments daily in Writing Notebook

# MATH

We will follow Eureka Math for  
Grade 3.

Students will be given an initial  
assessment to see where they rate  
in basic Grade 2 skills

Groups will be created to  
help students meet  
grade level standards.





# SCIENCE

**Students will have access to Discovery Education and will be assigned lessons throughout the units.**

**It is important they access and complete activities in a timely manner.**

# SCHOOL SUPPLIES

- Water bottle daily
- Masks: Preferably 5 to keep here
- Individual pencil pouch provided
- Individual crayon box/container
- 5 notebooks and 4 folders
- Pencils
- Glue Sticks
- 1 binder





# wishLIST

Baby Wipes

Lysol Wipes

Hand sanitizer

Index cards

Paper towels

Post Its

Highlighters

dates to  
**REMEMBER**

August 24<sup>th</sup>: First Day of school!

IRLA leveling: 8/24-9/4



# FIELDtrips

Virtual Field Trips only for 2020-2021

# PARENT VOLUNTEERS



Please fill out volunteer forms. As of yet, we are not allowing outside adults into the school building, but things might change.



# Helpful WEBSITES

DBQ

DISCOVERY EDUCATION

RBCES' WEBSITE

RBCES FACEBOOK



# BiRtHdAy INFORMATION

Although parents are not allowed to have lunch with their children, we can discuss a way to celebrate your child.





End



# DISMISSAL

<Add Text Here>





# CONTACT INFORMATION

<Add Text Here>

# SOCIAL STUDIES

<Add Text Here>





# Stem INFORMATION

<Add Text Here>

# TESTING iNfORMAtiON

<Add Text Here>











