

E K O M O M A I

Student Led Conferences- Teaching Empowerment and Ownership

During the 2016-17 school-year, the majority of Hanalei School teachers made a commitment to students leading their own conferences; to include informing their parents about their progress in class, their struggles, their behavior and academic goals and what type of learner they are. During quarter 2, teachers will be preparing students again to run Student Led Conferences. This preparation includes teaching students how to create a formal introduction, analyze and compile best work samples, evaluate personal progress and set goals accordingly. For

teachers, preparing students to run their own conference is a commitment of time and energy. However, the process empowers student to take responsibility for their learning and accomplishments and verbalize their own ideas for personal growth and improvement. The payoff is a more relevant learning experience for our students and enhanced participation with our parents. With that said, parents, mark your calendars for **November 6-17** for the Hanalei School Parent Teacher Conference days. **School release time will be at 12:50 over the course of those nine days.**

October - November

Important Dates:

October 9-13 – Fall Break– No School
 October 16 – 2nd Quarter begins
 October 19 – SCC Meeting 2:30pm, library
 October 24 – PTSA Board Meeting 2:15pm, library
 October 30 – Teacher Planning Day – No School for Students
 October 31 – Halloween Parade and Fun Run Fundraiser
 November 6 – 17 – Parent Teacher Conferences. School gets out at 12:50pm EVERYDAY
 November 8 – Picture Re-take
 November 23-24 – Thanksgiving – No School

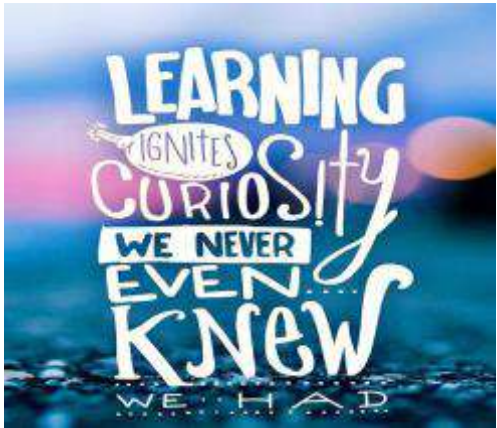
If you haven't provided your email please do so by emailing kdoi@hanalei.k12.hi.us

The newsletter is also posted on our website: <http://www.hanalei.k12.hi.us/>



“Happy is he who gets to know the reason for things” ~ Virgil

- Why don't antibiotics seem to work the way they used to?
- Why can't most adults around the world drink milk without getting a stomach ache?
- All of my siblings are tall with blue eyes, why am I short with light brown eyes if we are from the exact same parents?



When we are curious about things, we are more likely to want to learn the knowledge behind that topic. The Next Generation Science Standards (NGSS) anchors lessons in investigative phenomena to spark a person's interest about something. Phenomena are observable events in nature (or in our lives) that connect to science concepts. Teaching students from this approach is more engaging as students work towards explaining the science concepts behind the phenomena in their own words. At Hanalei School, Engineer Adrienne Kimber, Science Teacher Paulette Adams, and Gardening Teacher Nancy Cohen are working

alongside teachers in K-6 to teach students through science investigations anchored in phenomena. Students are learning to design and iterate, chart data, and apply science concepts to relevant questions. Ask your child about Science and find out what they're learning.

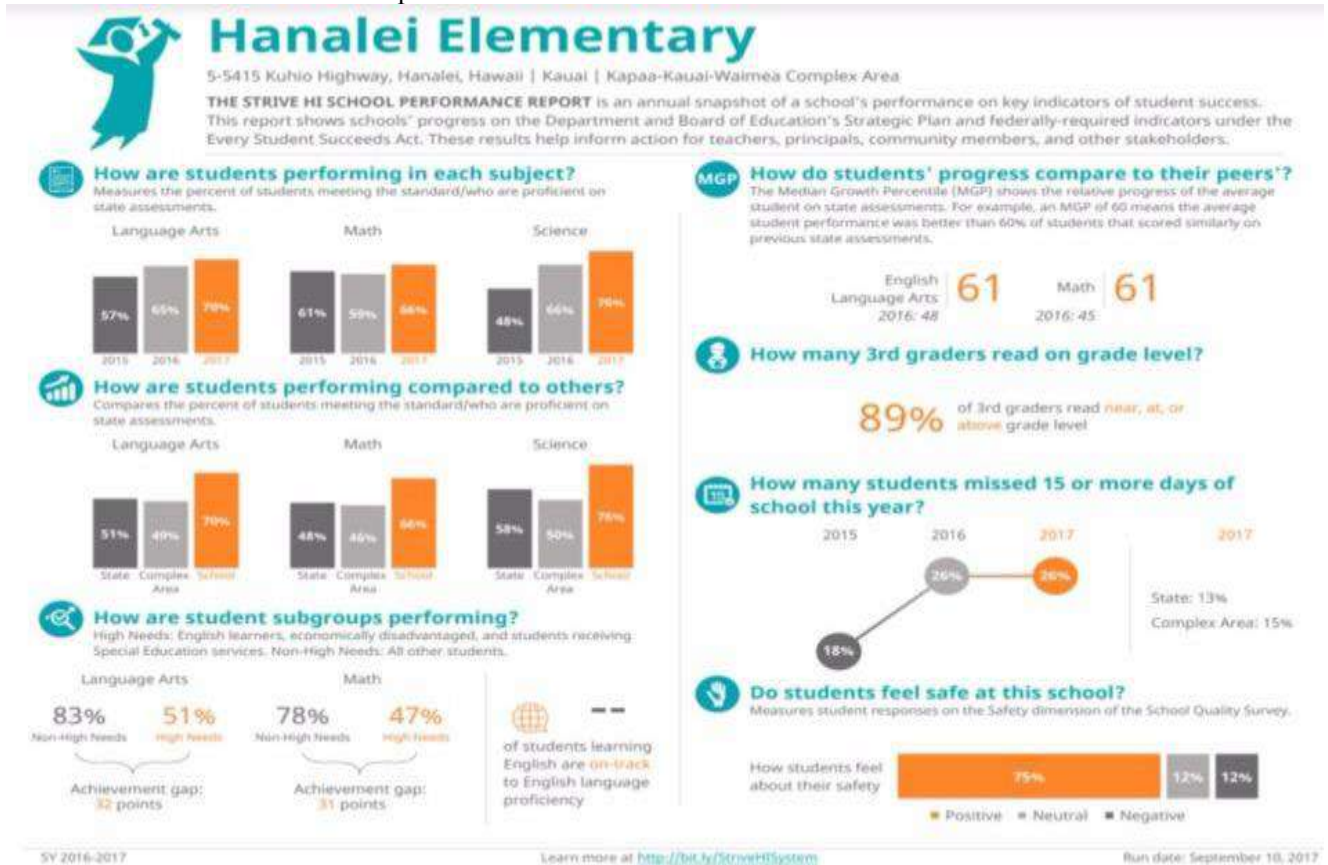


Quarter #1 - Parent Coffee Hour

Highlight Reel from the [Parent Coffee Hour](#) on September 29, 2017

If you weren't able to make the Parent Coffee Hour on September 29, click the link above to view the slideshow of what was presented. Here is a brief synopsis:

- STRIVE HI. Performance Report for School Year 16-17



- Five goals of the Academic Plan for School Year 17-18
 - Increase student engagement through PBL learning and comprehensive science instruction in K-6
 - Meet the needs of diverse learners inside the classroom setting
 - Utilize Math Data Teams to improve math skills & concepts
 - Build a comprehensive Character Education system
 - Improve school attendance through communication & celebrations
- Future funding initiatives:
 - comprehensive science
 - outdoor classroom
 - makerspace
 - garden expansion
- Parent input to be used in the Hanalei School Accreditation report:
 - [WASC Accreditation Parent Input Form](#)

Continued - Parent Coffee Hour

Suggestions by Parents	Commendations by Parents
<ul style="list-style-type: none">• Weekly updates about academics in the form of a newsletter, SeeSaw or other. Parents who had teachers who utilized a weekly newsletter or used SeeSaw in the past felt like they could reinforce the learning at home because they knew what was happening.• Regular feedback on how child is doing academically. Some parents express concern about not knowing how their child is doing academically until the report card comes home.• Utilizing older students to mentor younger students; many parents felt this was an important system that could be enhanced throughout the school.• Homework is sometimes lengthy and typically a battle between child and parent. How can homework be more relevant or presented in a way that students enjoy (such as math games or projects)?	<ul style="list-style-type: none">• Differentiation- parents were able to speak to the way in which teachers differentiate to meet the needs of all students, address the students who need remediation but also stretch the students who get it the first time. Parents specifically mentioned learning stations, peers assisting their classmates with learning something in student friendly language, passion/research projects for students to work on when they have time.• Achieve 3000 (Smarty Ants & KidBiz); parents see tremendous value in utilizing Achieve 3000. They see big differences in ability in their children who used it frequently versus their children who went through Hanalei School prior to Achieve3000 or had a teacher that didn't require it's extensive use.



Message from the PTSA



Thank you for dropping by our PTSA tables at open house. If you are not a SY 2017-2018 member yet, there are forms in the office. Please turn in to the office or your homeroom teacher.

Many hands go a long way and becoming involved in whatever manner you're able is greatly appreciated.

Please contact: hanaleielementaryptsa@gmail.com



Fall Fun-Run (Jog-A-Thon)

Our first fundraiser is just around the corner. Students will be receiving donation packets with information on Monday October 16th. Please encourage your child to ask family, friends, neighbors and the community to support Hanalei School. All funds raised go directly back to school to support PTSA programs such as Music, Art, PE, Gardening, Drama, Technology and much more. We also support our students, teachers and staff providing much needed funds in a variety of areas. Let's make this exciting event and fundraiser a HUGE success!!

The Fun Run will be held Halloween morning, October 31st. If you are able to help, there's plenty to do. Contact: Kim Mertz - hanaleielementaryptsa@gmail.com or (808) 885-8680

Continued: PTSA

Amazon Smile

Please help the PTSA raise funds through Amazon Smile donations. It's your same Amazon account, but by signing up for Amazon Smile, Amazon donates 0.5% of the purchase price to Hanalei PTSA. It's as easy as that and takes a minute to sign up!

Use this link: <http://smile.amazon.com/ch/99-0305469> and ask your friends and family, to bookmark this link so all their eligible shopping will benefit Hanalei PSTA.



KFD promotes Fire Prevention Week, Oct. 8-14: “Every Second Counts: Plan 2 Ways Out!”

LĪHU’E – Seconds can mean the difference between life and death in a fire. That’s why having a home escape plan is critical, and it’s the main message behind this year’s national Fire Prevention Week, Oct. 8 to 14.

“Developing and practicing a home escape plan is like building muscle memory,” said Fire Chief Robert Westerman. “With a practiced plan, you and your family will feel more confident in your ability to snap into action and escape as quickly as possible in the event of a fire.”

The Kaua’i Fire Department is once again working in coordination with the National Fire Protection Agency (NFPA) to promote this year’s campaign, “Every Second Counts: Plan 2 Ways Out!”

To kick off Fire Prevention Week, the Fire Prevention Bureau will have an educational display at Home Depot on Oct. 7 for Fire Safety Day. Firefighters will be hosting tours of Sparky’s Fire Safety Trailer from 9 a.m. to noon, to teach fire safety tips to people of all ages. In support of Fire Prevention Week, the Kaua’i Fire Department encourages all households to develop a plan together and practice it. A home escape plan includes working smoke alarms on every level of the home, in every bedroom, and near all sleeping areas. It also includes two ways out of every room, usually a door and a window, with a clear path to an outside meeting place (like a tree, light pole, or mailbox) that’s a safe distance from the home.

NFPA and the Kaua’i Fire Department offer these additional tips and recommendations for developing and practicing a home escape plan:

- Draw a map of your home with all members of your household, marking two exits from each room and a path to the outside from each exit.
- Practice your home fire drill twice a year. Conduct one at night and one during the day with everyone in your home, and practice using different ways out.
- Teach children how to escape on their own in case you can’t help them.
- Make sure the number of your home is clearly marked and easy for the fire department to find.
- Close doors behind you as you leave — this may slow the spread of smoke, heat, and fire.
- Once you get outside, stay outside. Never go back inside a burning building.

For more information on Kaua’i’s Fire Prevention Week programs and activities, please contact the Kaua’i Fire Department at 241-4985 or email kfdpreventionbureau@kauai.gov. To learn more about home escape planning and other fire safety tips, visit the NFPA website at www.firepreventionweek.org