

OUR MISSION at Leilehua High School is to provide our students with quality educational services in a secure and nurturing environment.

Fulfilling our mission will enable our students to be informed and responsible citizens, capable of participating successfully in a global Society.



MULE TRACKS



An Official Publication for the Parents, Teachers, and Community of Leilehua High School, a recognized Blue Ribbon Award School of Excellence, fully accredited by WASC.

Administration

Principal:

Mr. Jason Nakamoto

Vice-Principals:

Ms. Laurie Pe'a

Mr. Kerry Kawamura

Mrs. Jennifer Okuma

Mr. Barry McCorkell

School Services Assistant:

Mrs. Melody Kurisu

Mr. Nolan Tokuda

Athletic Director:

Mr. James Toyota

Registrar:

Ms. Dion Cabalce



JROTC attended the Military Ball on December 10, 2016

1515 California Avenue

Wahiawa, HI 96786

Phone: 305-3000

Fax: 622-6554

www.leilehua.k12.hi.us

Mark Your Calendars!
LHS Office Hours are 7:30am to 4:00pm

3rd Quarter: January 9- March, 2017

SENIORS

Seniors and their Parents/Guardians that we will be having a Parent Meeting to review the "Expectations and Understanding for Participation in Commencement Exercises"

Meetings will be held on:
Students Last Name A-K: Tuesday, January 24, 2017 at 6pm in the Library

Students Last Name L-Z: Wednesday, January 25, 2017 at 6:00pm in the Library

INSIDE TRACKS	Principal Message.....	Pg 2
	Transition Center.....	Pg3-4
	Project Focus Hawaii.....	Pg 5-6
	Hunter safety.....	Pg 7
	JROTC.....	Pg 8-9
	Federal Survey Card.....	Pg10-16
	Bell Schedule.....	Pg 17
	Bus Passes.....	Pg 18
	Scholastic Awards.....	Pg 19
	Text Message Info.....	Pg 20
	Important Information.....	Pg 21
	Blood Drive.....	Pg 22
	College & Career.....	Pg22-23
Tutoring.....	Pg25-29	
PTSO.....	Pg 30	
Volunteer.....	Pg 31	
Leadership, Humility, Service.....	Pg 32	

Principal's Message

Dear Leilehua Families,

I hope everyone had a great Winter Break and is having an awesome start in 2017. We are past the midway point of the school year and it is vital all students put themselves in a position to pass all classes. Also, please remind your child to be on time to class so they don't miss out on important learning opportunities.

Parents of Seniors and Grad Juniors, please plan to attend a mandatory meeting for students wanting to participate in Graduation. The meeting will be held in the Library and covering the Department of Education Notice of Expectations for Commencement Exercises.

Here are the dates:

- January 24, 2017 @6pm, Library (Last names beginning with A-K)
- January 25, 2017 @6pm, Library (Last names beginning with L-Z)

If you have any questions regarding the mandatory meeting, please contact Class of 2017 Vice Principal Ms. Pe'a at 305-3000.

The second semester is filled with many extra-curricular events such as Prom, Athletics, and Graduation. Please ensure your child's outstanding obligations are cleared so they can participate in these events. For a current print out of your child's obligations, please see the front office.

2nds @ Leilehua (Food Truck Event) will be held on February 10, 2017 from 4:00-8:00pm in our front parking lot. Please join us for some food, fun, and good times. If you or anyone you know is interested in becoming a vendor, please send inquires to 2nds_at_leilehua@mules.k12.hi.us.

If you have any suggestions or ideas on how we can improve our supports and services, please let us know by sending us an email through our school website by clicking on the contact tab.

Thank you everyone for your continued support.

GO MULES!

Jason Nakamoto



*"Helping Ease the Transition for New Students
and Their Families"*

The Aloha Transition Center is here to support students and families in transition. For information on *school tours, new student and parent resources, or an orientation to LHS* contact our office at:

(808) 305-3031,

Or email: lhstransitioncenter@gmail.com

Want more info? Visit our Website:
WelcomeToLeilehuaHS.weebly.com

THE TRANSITION CENTER AND THE ALOHA
AMBASSADORS WOULD LIKE TO WELCOME
28 new students to Leilehua for the
month of January!

Ambassador of the month:

**Brenna Kaopua-Medeiros
12th Grade**



**Samantha Lumbao
12th grade**



**Markiese Boykin
10th grade**



**Stephanie Lawson
12th grade**



**ALOHA AMBASSADOR
CHRISTMAS PARTY
2016**



Ramon & Cody

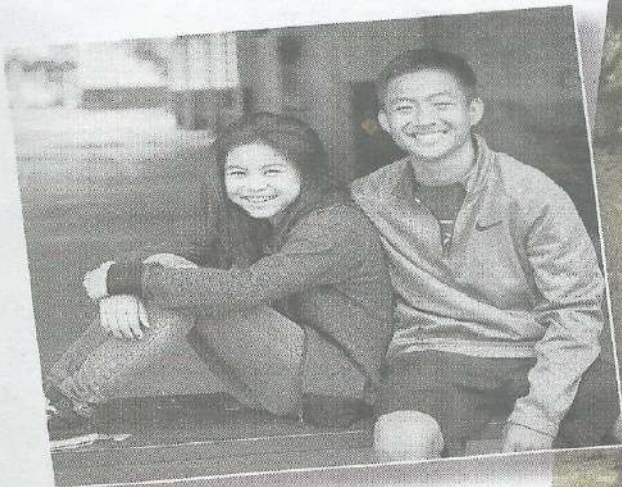


Nicolle & Megan!



Julianne!





COURTESY LISA UESUGI

Wahiawa teens Kayla and Cody Cacatian, above, interviewed their grandparents Raymond, pictured at right as a youngster, and Gerilyn Higa for the "Crossing Bridges" project.



COURTESY HIGA FAMILY

Wahiawa kids use photography to see through eyes of kupuna

By Nancy Arcayna
narcayna@staradvertiser.com

Wahiawa, long associated with pineapple and the military, often gets a bad rap for crime and homelessness. But listening to the stories of some of its eldest residents provides a much different picture of the Central Oahu town.

Cody Cacatian, a 16-year-old Leilehua High School student, learned about Wahiawa after interviewing his grandparents for the "Crossing Bridges" project sponsored by ProjectFocus Hawaii, a nonprofit program founded by photographers Laurie Breeden Callies and Lisa Uesugi to enhance children's lives through photography.

Nineteen area students representing Leilehua, Wahiawa Middle School and Island Pacific Academy worked with 24 kupuna

to create an oral history and photo exhibit, which will be on display at Leilehua's library Monday through Dec. 20. Hours are 9 a.m. to 2 p.m.; guests must check in at the administrative office before entering the library.

"Crossing Bridges" refers to both the bridges leading into the town and the project's intergenerational nature.

Many of the students were partnered with nonrelatives. The kupuna shared childhood and family memories and posed for photos.

Among the subjects are 94-year-old Josephine Honda, whose husband founded Honda Tofu Factory, and who still drives and stays fit with aquatic exercises. Another old-timer, Alfred Tagudin, sold newspapers as a kid, shined shoes for 15 cents, and recalled the blackouts during the war, when residents had to

carry gas masks everywhere they went.

Cacatian, along with his sister Kayla, a 13-year-old middle-schooler, queried their 74-year-old grandfather, Raymond Higa, and 73-year-old grandmother, Gerilyn Higa, and learned that the couple met in seventh grade and began dating as juniors at Leilehua. Raymond was in the school band and a member of the rifle team, and Gerilyn was a majorette.

The Higas have long ties to Wahiawa. His father worked as a train operator at the Wahiawa train station, and her mother owned Bea's Beauty Center.

The interactions benefited both the seniors and students, according to Callies. "Bridging the gap between youth and kupuna is critical to preserving the legacies and history of Hawaii's bountiful past," she said.

Photography exhibit connects youth, kupuna over Wahiawa's rich history

By **Ron Mizutani** Published: December 8, 2016, 1:48 pm Updated: December 8, 2016, 6:08 pm

It's been said that photographs capture a moment that's gone forever, impossible to reproduce.

A new exhibit provides a unique snapshot of Hawaii's history through the eyes of kupuna and keiki from Wahiawa.

Dec. 7, 1941 is a day Alfred Tagudin will never forget. The 82-year-old shared his memory in a new exhibit created by Project Focus Hawaii, a non-profit organization that provides photography internships for Hawaii youth and seniors.

"All of a sudden, he saw very low-flying aircraft and they went out there and it was Japanese bombers and he said, 'You know what, if I had one slingshot, I could have hit him,'" said Laurie Callies with Project Focus Hawaii. "He was sitting there, grinning at me with his goggles on, and I could see the fur around his collar,' and he said all of a sudden, the ground started just exploding."

This year, Project Focus Hawaii partnered with the Wahiawa Community Based Development Organization to create an exhibit featuring 24 Wahiawa kupuna.

"It was a perfect place to start in Wahiawa because it's a very rich history there, both culturally and economically," Callies said. "Even though it was a very difficult time then, it was very important for the economy here in Hawaii."

Each kupuna shared their story with a student from Leilehua High School, Wahiawa Middle School, Island Pacific Academy, and George Washington University, and many of those stories centered around the surprise attack on Pearl Harbor.

"I remember one, Dr. Chun saying to me, 'All of a sudden there was a bullet that went through my brother's car,'" Callies said. "When you sit down and you talk to someone who was actually there, it brings in a whole different perspective."

The exhibit is called Crossing Bridges, a project that brought together two generations of Wahiawa residents.

"They're used to 9/11. They're used to hearing those stories and to hear how close this was to their world and their community," Callies said. "I think it really opened their eyes."

The exhibit makes its debut at a private reception on Saturday, Dec. 10, at Wahiawa Hongwanji Church. It will open to the public at Leilehua High School's library from Dec. 12-20.

Back by popular demand...

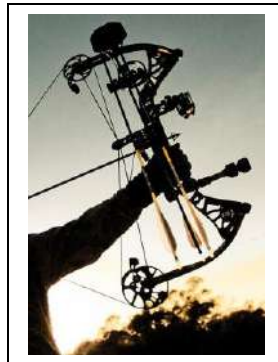
Interested in hunting in Hawaii or conservation issues? FREE class will be offered at LHS once again, sponsored by LHS Archery Club!!! Come and see Mrs. Ogura in Room P-26.

Due to the success of previous years and the continuing growing interest from our students, families, faculty and staff, the Department of Land and Natural Resources, Hunter's Education Program will be again presenting a SPECIAL 2 Day Hunter's Ed Class here at Leilehua High School on February 3rd (Friday 5:45-10pm) and February 4th (Saturday 7:45am-5pm), 2017. By having it here at LHS we are offering the class to our students, their families, and our faculty/staff. Surrounding communities may also request to participate

Sign-up and requirements: 1) in person, please bring picture ID to Mrs. Ogura at P-26 by January 18; 2) students under 18 need signed permission form (p/u from P-26); 3) call or e-mail Mrs. Arlene Ogura at 305-3083; 4) all participants must be at least 10 years old and need to commit to both days, and lastly; 5) must take a test at the end of the 2nd day to earn life-time certificate.

IT'S FREE!!! These classes offered from the State are usually very difficult to sign-up for and close quickly due to the limited number of available spots. We are very fortunate to provide this service to our school community, please take advantage of this opportunity if interested.

Questions? See Mrs. Ogura in P-26.



Leilehua JROTC Excels on Accreditation Inspection

On 23 November 2016, Leilehua's Mule Battalion completed a demanding two-part JROTC Program of Accreditation (JPA) conducted by the Hawaii Multiple School Unit (HMSU) inspector team. Our inspection results were superb as the Battalion scored an exceptional 94.63 percent out of a possible 100 percent score, and again cemented Leilehua JROTC as one of the best units in the country. The Mule Battalion was led by our Cadet/Battalion Commander Faith Boyce Jennings who demonstrated their expert Leadership skills during both the preparation and execution of the inspection. The Accreditation Inspection was based on 6 inspection sections. These areas included: an In-Ranks Inspection, Color Guard Sequence, Continuous Improvement Plan Brief, Service Learning Project Briefing, and Cadet Portfolios.

The first part of the Inspection was completed on 18 November and consisted of an exhaustive In-Ranks Inspection. There were 196 total Cadets in the formation standing tall as all Cadets' Uniforms were thoroughly inspected and each was given 6 general knowledge inspection questions. Additionally, The inspection was conducted by Active Duty Soldiers from Schofield Barracks. The Mule Battalion did awesome, and scored a perfect 100 percent on the In-Ranks portion setting the stage for a continued superior performance in the second part of the Accreditation.

As part 2 of the inspection began the Color Guard was brilliant. The Color Guard Team for the inspection consisted of Cadet Captain Kobee Ledward (Commander), Cadet CPL Maya Huddy, Cadet SSG Kalany Soto, and Cadet SSG Wyatt Calvert who all performed flawlessly and earned another perfect score. Their Active Duty inspector, SFC Alan Palancia, was quoted as saying, "This color guard is one the best I've seen, and that includes all Active Army Color Guards I've evaluated as well."

The SMART Goal of the Continuous Improvement Plan was "Increasing Cadet Event Participation"; and stressed the importance of getting all JROTC cadets involved in participating in the many extra-curricular activities offered by the JROTC program. Presenters in this briefing included the Battalion Commander and Battalion Executive Office, the S-1 (Cadet/CPT Promise Knosp), S-2 (Cadet/CPT Morgan Burks, S-3 (Cadet/CPT Vanessa Galvan), S-4 (Cadet/Janarah Jones), and the S-5 (Cadet/CPT Hope Owens). Each cadet briefed their specific role and contribution as it related to the Battalion Goal. The inspectors acknowledged the significant improvement in the amount of extra-curricular participation of our Cadets as we strive to make positive impacts within our school and community.

During the inspection, the Mule Battalion also presented a briefing on our Service Learning Project. The Service Learning Project briefed was our participation in the Wahiawa Middle School Career Day in which our cadets planned and executed a Color Guard presentation, a drill and ceremony exhibition, a rope bridge demonstration and practical exercise, tug of war competitions, and classes/skits on drug awareness and bullying to over 150 middle school students. The cadets briefing included Cadet/CPT Kobee Ledward, /Cadet CPT Elena Rivera, and Cadet 1LT Essence Johnson all who did an excellent job.

The final section of the inspection was an evaluation of the Cadet's Portfolios which is an individual evidence binder validating the JROTC Curriculum. The Battalion did extremely well on this portion scoring a 96 percent. Particularly noteworthy were the following Cadets who received a perfect score on their portfolios; Cadet SSG Jarod Olive-Stalling, Cadet PFC Terrell Allen, Cadet PFC Brandon Unrein, Cadet SFC Bradley Knosp, and Cadet CPL Soncee Del Rosario.

As a final note, the Mule Battalion would sincerely like to thank the School Administration Team, Faculty, Support Staff, and parents/guardians for their dedication, support, and guidance to Leilehua JROTC. The cadet's great success on this Accreditation Inspection is a direct result of your untiring efforts. As the Battalion moves forward, we will continue to do it the Leilehua way - using Leadership, Humility, and Service in all that we do.



**Congratulations
to our JROTC on a Job Well
Done!!!!!!!!!!**





On September 7, 2016, Hawaii's public schools will send home a U.S. Department of Education Federal Survey Form for parents to complete and return with your child to school.

Why is this important? The survey allows the State of Hawaii to qualify for a partial reimbursement for federally connected children. This funding supports all public schools, including your child's.

Here's how:

- Each year, Hawaii is unable to collect local taxes from tax-free federal properties, leading to less money for public education.
 - The federal government, partially reimburses Hawaii for the cost of educating federally connected students through Impact Aid funds. Last year, Hawaii's reimbursement was 15% of the total cost to educate a student. Although it is a small amount, every dollar we receive supports schools and students.
 - The amount of Impact Aid schools receive is based on how many parents complete and return the survey to their child's school. Every school strives for a 100% survey form return.
- ✓ Every survey form returned will increase funding for ALL public schools statewide.
 - ✓ This federal funding can mean an extra \$35 million to \$45 million annually for students.
 - ✓ Fill out and return your Federal Survey Form!

Learn more at bit.ly/ImpactAidHI





UNCLASSIFIED

**COMMANDER, U.S. PACIFIC COMMAND
(USPACOM)
CAMP H.M. SMITH, HAWAII 96861-4028**

August 17, 2016

Dear Parents:

This letter is provided to inform military parents/guardians with dependents enrolled in Hawaii public schools about correspondence you will soon receive from Hawaii Department of Education. On September 7, 2016, Hawaii public schools will send a Federal Survey Card home with students and ask parents/guardians to complete the card and return it the following day, September 8, 2016. I strongly encourage all of you to complete the Federal Survey Card and return it the following day.

The Federal Survey Card enables the Hawaii Department of Education to accurately report the number of federally connected student enrollments to the U.S. Department of Education for the purpose of receiving Impact Aid. This aid is a partial compensation for the loss of revenue for tax-exempt federal installations (e.g., military installations) and for increased expenditures due to the enrollment of federally connected children. More information about the Federal Impact Aid Program can be found on the U.S. Department of Education website at <http://www2.ed.gov/about/officeslist/oese/impactaid/>.

U.S. Pacific Command (USPACOM) recognizes the importance of quality dependent education to the overall welfare and readiness of the joint force, and will continue to advocate for the delivery of quality dependent education for military families. If you have any questions about the Federal Survey Card and/or the Impact Aid Program, please contact your child's school or Mr. David Tom, USPACOM Quality of Life and Education Analyst, at 477-8272.

A handwritten signature in black ink, appearing to read "KBS", is positioned above the typed name.

KEVIN B. SCHNEIDER
Major General, U.S. Air Force
Chief of Staff

UNCLASSIFIED



DEPARTMENT OF THE AIR FORCE
15TH WING
JOINT BASE PEARL HARBOR HICKAM HAWAII

MEMORANDUM FOR AIR FORCE FAMILIES WITH CHILDREN IN HAWAII'S PUBLIC SCHOOLS

FROM: 647 ABG/CC

SUBJECT: Federal Impact Aid Survey Cards

1. On 7 September 2016, your school-age child will bring home a Federal Impact Aid Survey Card from their public school. Please fill out this card and promptly return it to your child's school. Completed cards are extremely important as they will help to bring in more federal money to reimburse the Hawaii Department of Education for the cost of educating federally-connected children whose families do not pay Hawaii state taxes.
2. The Federal Impact Aid Program is designed to directly compensate the local school districts for: (1) local revenue lost due to the presence of federally owned, and therefore tax-exempt, property and (2) costs incurred due to federally connected students.
3. This card should only take a few minutes to complete and is the best way to ensure the Hawaii Department of Education receives the proper amount of federal aid dollars.
4. Thank you in advance for supporting this worthwhile and valuable program. If you have any questions regarding this survey card, please contact your child's school administration or Kimberly Crutchfield or Kim Munoz, JBPH-H School Liaison Officers at 471-3662-3673.

A handwritten signature in black ink, appearing to read "R. L. Smith", is positioned above the typed name.

RICHARD L. SMITH, Colonel, USAF
Commander



REPLY TO
ATTENTION OF

DEPARTMENT OF THE ARMY
U.S. ARMY INSTALLATION MANAGEMENT COMMAND, PACIFIC REGION
HEADQUARTERS, UNITED STATES ARMY GARRISON, HAWAII
745 WRIGHT AVENUE, BUILDING 107, WHEELER ARMY AIRFIELD
SCHOFIELD BARRACKS, HAWAII 96857-5900

AUG 16 2016

Office of the Garrison Commander

To the Army Families of Hawaii:

You have in your hand a very powerful tool to aid in the receipt of federal funding to support education in Hawaii's public schools. The Federal Survey Card that your child brings home enables the schools to accurately report federally connected student enrollments. This information is critical in order to receive federal funding and additional programs and services to offset the cost of educating your child.

You can help our schools by filling out the Federal Survey Card upon receipt and returning it to the school immediately the next day. A complete return rate ensures accurate collection of information and maximum federal funding. We are all aware of the fiscal difficulties that Hawaii schools are facing and every bit that we can do will help create a better learning environment for all students.

I am encouraging every parent to consider this their duty to ensure our schools receive critical impact aid by returning the completed card promptly. Non-response could result in the loss of millions of dollars in federal funds that benefit both our military and local communities.

If you are unsure of your Address of Federal Property, please refer to the backside of this memo for a listing of Brigade Headquarter addresses. If you have any questions, please contact the Army School Liaison Office at 655-8326.

Sincerely,

Stephen E. Dawson
Colonel, U.S. Army
Commanding

US Army Hawaii Addresses

Division	Brigade	Battalion	Address	
18 MED COM			160 Loop Road, Ft. Shafter, HI 96858	
25 ID Headquarters	25 ID		2091 Kolekole Ave, Building 3004, Schofield Barracks, HI 96857	
25 ID	HHB, DIV ART	HHB, 25 th Field Artillery		
25 ID	HHB, 25 ID	HHBN, 25 th Infantry Division		
25 ID	2 SBCT	1-14 IN BN	1578 Foote Ave, Building 500, Schofield Barracks, HI 96857	
25 ID	2 SBCT	1-21 IN BN		
25 ID	2 SBCT	1-27 IN BN		
25 ID	2 SBCT	2-11 FAR		
25 ID	2 SBCT	2-14 CAV		
25 ID	2 SBCT	225 BSB		
25 ID	2 SBCT	65 BEB		
25 ID	2 SBCT	HHC, 2 SBCT		
25 ID	25 CAB	209 th Support Battalion		1343 Wright Avenue, Building 100, Schofield Barracks, HI 96857
25 ID	25 CAB	2 nd Battalion, 25 th Aviation Regiment		
25 ID	25 CAB	2 nd Squadron, 6 th Cavalry Regiment		
25 ID	25 CAB	3-25 GENERAL SPT AVN BN		
25 ID	25 CAB	HHC, Combat Aviation Brigade,		
25 ID	3 IBCT	2-27	1640 Waianae Ave, Building 649 Schofield Barracks, HI 96857	
25 ID	3 IBCT	2-35 IN BN		
25 ID	3 IBCT	29 BEB		
25 ID	3 IBCT	325 BSB		
25 ID	3 IBCT	325 BSTB		
25 ID	3 IBCT	3-4		
25 ID	3 IBCT	3-7		
25 ID	3 IBCT	HHC, 3 IBCT		
311 SCT Headquarters	311 SC			Bldg 520, Ft. Shafter, HI 96858
311 SCT	HHC, 311th SIG CMD			
311 SCT	516 SIG BDE	307 EXPEDITIONARY SIG BN	420 Palm Circle Dr, Ft. Shafter, HI 96858	
311 SCT	516 SIG BDE	30TH SIGNAL BATTALION		
311 SCT	516 SIG BDE			
8TH TSC Headquarters	8TH TSC		525 Wisser Rd, Ft. Shafter, HI 96858	
8TH TSC	130 ENG BDE	HHC, 84 EN BN	284 Williston Ave, Schofield Barracks, HI 96857	
8TH TSC	130 ENG BDE	HHC, 130 ENG BDE		
8TH TSC	45 SUST BDE	524 CSSB	182 Sutton Street, Schofield Barracks, HI 96857	
8TH TSC	45 SUST BDE	HHC, 45 th Sustainment Brigade		
8TH TSC	8 MP BDE	303 EOD BN	455 Williston Ave, Schofield Barracks, HI 96857	
8TH TSC	8 MP BDE	HHC, 8 th Military Police Brigade		
8TH TSC	8 MP BDE	HHD, 728 MP BN		
94 ARMY AIR & MISSILE DEFENSE CMD			Bldg 320 Monroe Rd, Ft. Shafter, HI 96857	
AMC	599 Transportation BDE		352 Santos Dumont Ave, Building 204 WAAF, HI 96854	
CID		19 MP BN	314 Sasaoka Street Bldg. 300, Schofield 96857	
CMD USA PACIFIC RGN DENTAL				
INSCOM	INSCOM	500 MI BDE	Bldg 130, Schofield Barracks, HI 96857	
INSCOM	INSCOM	205 Military Intelligent Battalion		
INSCOM	INSCOM	715 MI Battalion		
US ARMY MEDICAL COMMAND			1 Jarrett White Road, Honolulu, HI 96859	
USARPAC	196 INF BDE		Bldg 525, Ft. Shafter, HI 96858	
USARPAC	HAWAII MP BDE			
USARPAC	HHBN, PAC			



UNITED STATES MARINE CORPS

COMMANDER, U.S. MARINE CORPS FORCES, PACIFIC
CAMP H. M. SMITH, HI 96861-5001

IN REPLY REFER TO:
1000

G-1

18 AUG 2016

From: Commander, U.S. Marine Corps Forces, Pacific
To: Commanding General, I Marine Expeditionary Force
Commanding General, III Marine Expeditionary Force

Subj: 2016 Federal Impact Aid Survey

1. School districts across our nation include land that is owned by the Federal Government or land that has been removed from the local tax rolls by the Federal Government. Because Federal property is exempt from local property taxes, these school districts operate with less local revenue than is available to other school districts and as a result face the challenge of providing a quality education. Since 1950, Congress has provided financial assistance to these local school districts through the Impact Aid Program. This program provides Federal funding to local school districts with children residing on military bases and other Federal properties, as well as children who have parents in the uniformed services or employed on eligible Federal properties who do not live on Federal property.

2. Beginning this September, schools will be sending children home with Federal Impact Aid Survey cards for the 2016-2017 School Year. Each year, a significant number of survey cards are not returned which translates in the loss of Federal funding used to offset additional expenses incurred by educating Federally-connected children. Thus, I need your support in making a concerted effort to increase awareness and participation in this important survey. Request you endorse this process as a priority and encourage your Marines, Sailors, and Civilians to complete the Federal Impact Aid Survey card. This will ensure school districts accurately report the number of Federally-connected students, ensuring school districts receive the appropriate Federal funding needed to meet the educational needs of our Federally-connected children.

3. I appreciate your personal attention in this matter. My point of contact is Ms. Keri Fischer at DSN (315) 477-8373, commercial (808) 477-8373, or e-mail keri.fischer@usmc.mil.

*LEADERS PLEASE
GET INVOLVED!*



John A. Toolan
JOHN A. TOOLAN

Copy to:
CG, MCI-West
CG, MCI-Pacific
CO, HQSVC BN, MARFORPAC
CO, MCB, Hawaii



DEPARTMENT OF THE NAVY
COMMANDER
NAVY REGION HAWAII
850 TICONDEROGA ST STE 110
JBPHH HI 96860-5101

1750
Ser N04/140
7 Jun 16

Dear Navy Families:

We need your help. On September 7, 2016, your school-age child will bring home a Federal Impact Aid Survey Card given to them by their public school. Please complete this card and promptly return it to your child's school. These completed cards will result in more federal money to help reimburse the Hawaii Department of Education for the cost of educating federally-connected (including military) children whose families do not pay Hawaii state taxes. This will mean more resources for the schools and ultimately our children.

The Federal Impact Aid Program is designed to directly compensate the local school districts for: (1) local revenue lost due to the presence of federally owned, and therefore tax-exempt, property and (2) costs incurred due to "federally connected" students, such as the children of armed services personnel working at a nearby military installation.

Please take a few moments and complete the Federal Survey Card and return it to your child's school. Your participation is the only way we can ensure the Hawaii Department of Education receives the proper amount of federal aid dollars. A low return rate will result in the loss of millions of federal dollars that could otherwise benefit our local schools and our children's education.

Thank you in advance for supporting this important endeavor. If you have any questions regarding this survey card, please contact your child's school administration or Ms. Kimberly Crutchfield/Ms. Kim Munoz, JBPHH School Liaison Officers, at (808) 471-3662/3673.

A handwritten signature in black ink, appearing to read "M. S. Manfredi", is positioned above the typed name.

M. S. MANFREDI
Captain, U.S. Navy
Chief of Staff
By direction of the
Commander



Leilehua High School

2016-2017 Bell Schedule

Monday	Tuesday	Wednesday	Thursday	Friday
Opening 8:20 - 8:30	Opening 8:20 - 8:30	Opening 8:20 - 8:30	Opening 8:20 - 8:30	Opening 8:20 - 8:30
Period 1 8:30 - 9:45	Period 5 8:30 - 9:45	Period 1 8:30 - 9:45	Period 4 8:30 - 9:45	Period 1/5 8:30 - 9:45
Passing 9:45 - 9:55	Passing 9:45 - 9:55	Passing 9:45 - 9:55	Passing 9:45 - 9:55	Passing 9:45 - 9:55
Period 2 9:55 - 11:10	Period 6 9:55 - 11:10	Period 2 9:55 - 11:10	Period 5 9:55 - 11:10	Period 2/6 9:55 - 11:10
Recess / Passing 11:10 - 11:25	Recess / Passing 11:10 - 11:25	Recess / Passing 11:10 - 11:25	Recess / Passing 11:10 - 11:25	Recess / Passing 11:10 - 11:25
Period 3 11:25 - 12:40	Period 7 11:25 - 12:40	Period 3 11:25 - 12:40	Period 6 11:25 - 12:40	Period 3/7 11:25 - 12:40
Lunch / Passing 12:40 - 1:15	Lunch / Passing 12:40 - 1:15	Lunch / Closing 12:40 - 1:15	Lunch / Passing 12:40 - 1:15	Lunch / Passing 12:40 - 1:15
Period 4 1:15 - 2:30	Advisory Study Hall 1:15 - 2:30	Teacher's Meetings 1:20 - 3:20	Period 7 1:15 - 2:30	Period 4/SH 1:15 - 2:30
Closing 2:30 - 2:35	Closing 2:30 - 2:35		Closing 2:30 - 2:35	Closing 2:30 - 2:35

Bus Passes



Students who intend to use the public school bus system as their primary means of getting to and from school daily throughout the entire year are encouraged to select the **ANNUAL** payment plan.

Annual Round Trip \$270.00

Annual One Way \$135.00

Students

who intend to use the public school bus system as their primary means of getting to and from school daily *but whose transportation needs might change from academic quarter to quarter* are encouraged to select the **QUARTERLY** payment plan.

Quarterly Round trip \$72.00 (Four payments due each Quarter)

Quarterly One Way \$36.00 (Four payments due each Quarter)

Quarter 1 due July 29

Quarter 2 due October 7

Quarter 3 due December 21

Quarter 4 due March 17

Students who intend to use the public school bus system **only occasionally** are encouraged to purchase **One-Way Bus**

Coupons

Coupons:

Sold in sheets of 10- \$12.50 per sheet (Cash Only)

Please select your payment plan carefully!

Scholastic Art awards

The results of the **2017 Hawaii Regional Scholastic Art Awards** were released on Friday afternoon and Leilehua had another great showing with 35 awards. Special honors went to **Kathleen Acasio** in photography and **Christina Masutani** in 2D who were recognized as **American Visions Award Nominees**. Their artworks were recognized by the judges as the best in show in their category. Congratulations to all our award winners.

Kathleen Acasio (3 awards)

Kamenn Branch

Jena Brittain

Jayson Cariaga

Deziraé Tolston-Anacieto (2 awards)

Kuhao Cummings-Fisher

McKenna Drury

Zaria Dudley

Jackie Dulerie (3 awards)

Azyah Duncan (2 awards)

Atlast Emwalu

Kathleen Garcia

Sarah Hegue

Josaphine Ladao (2 awards)

Cherysh Madeira

Christina Masutani (3 awards)

Willie Munford

Dinamoni Nuusila

Wensley Pasion

Laynee Pew (2 awards)

Nichols Porter

Angelica-Faye Rivera

Veronica Rodriguez

Jazmine Ioi Rosales

Erika Titus



Parents & Guardians:

Leilehua is pleased to announce that we can now send announcements via SMS text messaging to your mobile phones. If you would like to receive text messages from the school, please do the following:

1. Ensure that Leilehua has your cell phone number on file.

If we did not have your cell phone number on file and you added it, wait at least 24 hours before proceeding to the next step.

2. From your cell phone, text the word JOIN to the number 56360.

If our messaging system finds a match for your number in its database, you will receive a confirmation message thanking you for joining school alerts.

At any time, you can unsubscribe by texting STOP to 56360.

3. Create a contact on your phone for Leilehua HS and the phone number 56360. Then when you receive a text from this number, you know who is sending it.

If you have any questions or need any assistance, please call the Registrar's office at 305-3101.

Thank you!

Please read.....

OFF-CAMPUS PASS / EARLY RELEASE

Any request to leave campus must be made in writing and submitted to the school office before the school day begins. Requests by a parent/legal guardian must include the following information: *student's legal name, *home telephone number, *phone number where the parent/guardian can be reached, *date/time for release, reason for release, *time student will return to school (if applicable). IF NO REQUEST IS MADE BEFORE SCHOOL BEGINS, AUTHORIZED PARENT OR LEGAL GUARDIAN MUST BE PRESENT FOR RELEASE. The student is responsible for presenting his/her off-campus pass to his/her teachers on the following school day. Students found off campus without a valid off-campus pass are subject to arrest for truancy.

DOE NONDISCRIMINATION POLICY

The Hawaii State Department of Education (HSDOE) and its schools do not discriminate on the basis of race, sex, age, color, national origin, religion, or disability in its programs and activities and provides equal access to designated youth groups, including the Boy Scouts. Please direct inquiries regarding HSDOE nondiscrimination policies as follows:

Section 504 inquiries

Section 504 Education Specialist Comprehensive Student Support Services Hawaii State Department of Education

475 22nd Avenue, Building 302, Room 204
Honolulu, Hawaii 96816
(808) 305-9787 or relay

Title VI. Title IX. ADA. And other inquiries Director
Civil Rights Compliance Office Hawaii State Department of Education
P.O. Box 2360
Honolulu, Hawaii 96804
(808) 586-3322 or relay



S Y 2 0 1 6 - 2 0 1 7

Blood Drive

Everybody has it. Everybody needs it.

Sign up TODAY
in room 29!

Seniors:

Did you know you can earn an honor cord from the Blood Bank? You can be eligible for this if you:

Donate yourself 3 times this school year

OR

If you recruit 3 first time donors per blood drive

So if you are unable to donate at this first drive because your sport is in season or you are not 110 pounds, you can recruit blood donors instead of donating yourself.



Every 2 seconds someone needs blood.

Blood donor requirements:

1. Be in good health on the day of the drive
2. 18 years of age or older (17 year olds can donate with a signed parent/guardian consent form)
3. Weigh at least 110 pounds
4. Have photo identification with birthdate

Check the Blood Bank of Hawaii website or call (808) 848-4745 if you are unsure about eligibility.

Save these dates!

Blood Drive 1
Monday, September 26, 2016

Blood Drive 2
Friday,
January 20, 2017

Blood Drive 3
Thursday,
March 30, 2017

College and Career News

Update from the College & Career Center in HH101

Check www.LeilehuaConnections.weebly.com regularly for opportunities for students to help them plan for after high school. There are college visits to our campus, career and financial aid workshops, field trips, local college events, planning tools, scholarship links, and more.

Follow us on Instagram @LeilehuaConnections for information and reminders.

FAFSA WORKSHOPS FOR SENIORS & THEIR FAMILIES

Come complete your FAFSA with help from financial aid experts from local colleges.

Leilehua High School in HH203 Computer Lab open from 6:00 p.m. to 8:00 p.m.

November 7, December 7, January 18, February 15, and March 8

RSVP at <http://tinyurl.com/FAFSARegistration2017>

- RSVP not required but helpful so that we can provide enough help for you all.

To complete the FAFSA in less than 30 minutes, you will need:

- Your Social Security Number
- Your Alien Registration Number (if you are not a U.S. citizen)
- Your most recent federal income tax returns, W-2s, and other records of money earned. (**Note:** You may be able to transfer your federal tax return information into your FAFSA using the IRS Data Retrieval Tool.)
- Bank statements and records of investments (if applicable)
- Records of untaxed income (if applicable)
- An FSA ID to sign electronically. Go to <https://studentaid.ed.gov/sa/fafsa/filling-out/fsaid> (Get your FSA ID ahead of time because it takes 1-3 days for the Social Security Administration to verify your information. You can also request it at the workshop so come even if you haven't had time to get the FSA ID ahead of time.)

SAT TEST DATES 2016-17

Register Online www.sat.org/register

Test Date	Regular Registration Deadline	Late Registration Deadline
Jan 21, 2017*	December 21, 2016	January 10, 2017
March 11, 2017*	February 10, 2017	February 28, 2017
May 6, 2017**	April 7, 2017	April 25, 2017
June 3, 2017**	May 9, 2017	May 24, 2017

*Recommended for Seniors who need to improve scores.**Recommended for Juniors to take SAT for the first time.
The PSAT/NMSQT is recommended for 10th & 11th graders and is only in Oct. Registration is in Aug at LHS.

ACT TEST DATES 2016-17

Register Online www.actstudent.org

Test Date	Regular Registration Deadline	Late Registration Deadline
February 11, 2017	January 13, 2017	January 20, 2017
April 8, 2017	March 3, 2017	March 17, 2017
June 10, 2017	May 5, 2017	May 19, 2017

ACT dates above are recommended only for Seniors who need to improve scores.
Juniors will take the ACT for free on Leilehua High School on February 28, 2016

ASVAB

Register in the CCC in HH101 by December 14, 2016 for the next ASVAB on December 21, 2016 8:30 a.m. at Leilehua High School Library. Student must provide their own transportation.

ACT College and Career Readiness Assessment

Leilehua will once again participate in the ACT College and Career Readiness System! The State of Hawaii has purchased the ACT ASPIRE, & ACT with assessments for students in grade 9, 10, and 11. This is a **WONDERFUL** opportunity for your child. These assessments are aligned with Common Core State Standards and will measure student progress and readiness for post-secondary plans.

All students in grade 11 will be able to use this assessment for their college entrance exam requirement. The cost for the exam is \$49.00, however, your child will be able to take it for **FREE!**

Who: Students in grades 9, 10, & 11

What: ACT assessment

When: March 1, 2016

Where: Leilehua High School (students report to Advisory)

Bell Schedule: To Be Announced in February

Please discuss the importance of these assessments and its potential educational opportunities!

If you have any questions or concerns regarding the ACT assessment please contact Mrs. Sasaki at 305-3081.



Leilehua High School

2016-2017 SMARTS Calendar

dates subject to CANCELLATION

Tutoring and Library services available:

Monday
English
Social Studies

Tuesday
Math
Science
Borrow Books

Wednesday
English
Social Studies
Borrow Books

Thursday
Math
Science

6-8pm; Library



November 2016				
Monday	Tuesday	Wednesday	Thursday	Friday
	1	2	3	4
7	8	9	10	11
Eng / SS	HOLIDAY Election Day	Eng / SS	Math/Sci	HOLIDAY Wilson's Day
14	15	16	17	18
Eng / SS	Math/Sci Borrow books	NIGHT	Math/Sci	
21	22	23	24	25
Eng / SS	Math/Sci Borrow books	Eng / SS Borrow books	HOLIDAY Thanksgiving	
28	29	30		
Eng / SS	Math/Sci Borrow books	Eng / SS Borrow books		

December 2016				
Monday	Tuesday	Wednesday	Thursday	Friday
			1	2
			Math/Sci	
5	6	7	8	9
Eng / SS	Math/Sci Borrow books	Eng / SS Borrow books	Math/Sci	
12	13	14	15	16
Eng / SS	Math/Sci Borrow books	Eng / SS Borrow books	34	56
19	20	21	22	23
71	2 makeup	makeup		
26	27	28	29	30
WINTER BREAK				

January 2017				
Monday	Tuesday	Wednesday	Thursday	Friday
2	3	4	5	6
WINTER BREAK				
9	10	11	12	13
PO Day				
16	17	18	19	20
HOLIDAY MLK Jr. Day	Math/Sci Borrow books	Eng / SS Borrow books	Math/Sci	
23	24	25	26	27
Eng / SS	Math/Sci Borrow books	Eng / SS Borrow books	Math/Sci	
30	31			
Eng / SS	Math/Sci Borrow books			

February 2017				
Monday	Tuesday	Wednesday	Thursday	Friday
		1	2	3
		Eng / SS Borrow books	Math/Sci	
6	7	8	9	10
Eng / SS	Math/Sci Borrow books	Eng / SS Borrow books	Math/Sci	
13	14	15	16	17
Teacher Institute Day	Math/Sci Borrow books	Eng / SS Borrow books	Math/Sci	
20	21	22	23	24
HOLIDAY President's Day	Math/Sci Borrow books	Eng / SS Borrow books	Math/Sci	
27	28			
Eng / SS	Math/Sci Borrow books			

March 2017				
Monday	Tuesday	Wednesday	Thursday	Friday
		1	2	3
		Eng / SS Borrow books	Math/Sci	
6	7	8	9	10
Eng / SS	Math/Sci Borrow books	Eng / SS Borrow books	Math/Sci	
13	14	15	16	17
56	71	23	4 makeup	makeup
20	21	22	23	24
SPRING BREAK				
27	28	29	30	31
HOLIDAY Pierce Puka Day				

April 2017				
Monday	Tuesday	Wednesday	Thursday	Friday
3	4	5	6	7
Eng / SS	Math/Sci Borrow books	Eng / SS Borrow books	Math/Sci	
10	11	12	13	14
Eng / SS	Math/Sci Borrow books	College Planning Night	Math/Sci	HOLIDAY Good Friday
17	18	19	20	21
Eng / SS	Math/Sci Borrow books	Eng / SS Borrow books	Math/Sci	
24	25	26	27	28
Eng / SS	Math/Sci Borrow books	Eng / SS Borrow books	Math/Sci	
27				

May 2017				
Monday	Tuesday	Wednesday	Thursday	Friday
1	2	3	4	5
Eng / SS	Math/Sci Borrow books	Assembly Convocation	Math/Sci	Student Council Election
8	9	10	11	12
Eng / SS	Math/Sci Borrow books	Eng / SS Borrow books	Math/Sci	Senior Award Dinner
15	16	17	18	19
Eng / SS	Math/Sci Borrow books	Eng / SS Borrow books	Math/Sci	GRADUATION
22	23	24	25	26
71	23	45	6 makeup	Student Council Election makeup
29	30	31		
HOLIDAY Memorial Day				

Need extra help in your studies?

You can find friendly tutors for MATH, English, MATH, Science, MATH, Social Studies, MATH at:

TIPS

Tutorial Instructional Program for Students

Where: Room P11

When: Monday, Tuesday, Thursday,
Friday

2:45-3:45



Tutor.com for U.S. Military Families

Fact Sheet

Tutor.com for U.S. Military Families Program Overview

Tutor.com for U.S. Military Families allows eligible students to connect anonymously to an expert tutor online at any time for personalized help with homework, studying, test prep, proofreading and more. One-to-one academic tutoring and on-demand homework help is available at no cost to grades K-12 students and service members in active duty Army, Navy, Air Force and Marine Corps families through funding from the U.S. Department of Defense. Active duty and Reserve Coast Guard service members and their families are also eligible to use Tutor.com/military at no cost through funding from Coast Guard Mutual Assistance (CGMA). Eligible students can create an account and log in at www.tutor.com/military.

Free Around-the-Clock Help

Access to Tutor.com for Military Families is free 24 hours a day, seven days a week—no appointment needed. Students worldwide can access the online service using any internet-enabled device, including smart phones.

40+ Subjects, All Skill Levels

- Math:** Elementary, Mid-Level, Algebra I and II, Geometry, Trigonometry, Calculus, Statistics, AP level
- English:** Essay Writing, Grammar, Literature, Research Papers, Creative Writing, AP level
- Science:** Elementary, Earth Science, Biology, Chemistry, Physics, Anatomy, AP level
- Social Studies:** U.S. History, World History, AP level
- World Languages:** Spanish, French, German

Eligible adult students also have access to tutoring in college-level Economics, Finance and Accounting, plus Nursing subjects, including Pathophysiology and Pharmacology.

Expert, Background-checked Tutors

Every Tutor.com tutor is a carefully screened expert. Our team of more than 3,000 tutors includes certified teachers, college professors and other professionals. We actively recruit military spouses, and many of our tutors are affiliated with the U.S. military, such as retirees and Veterans.

Safe, Secure, Anonymous

Our commitment to student safety includes a rigorous tutor screening, background-check and mentoring process plus ongoing session reviews. Students and tutors work together anonymously; webcams and telephones are not used, and no personal information is exchanged during tutoring sessions.

Eligibility

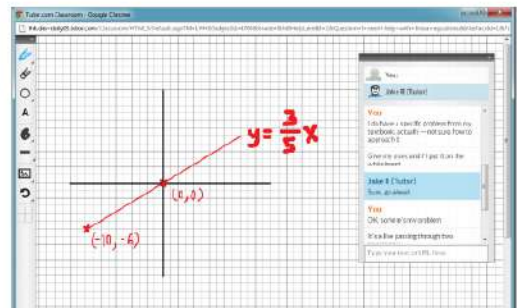
The DoD and CGMA decided which military-connected students are allowed to use Tutor.com at no cost. Visit www.tutor.com/military/eligibility for complete program eligibility details.

More information

Email militarysupport@tutor.com. Connect with us on social media: [facebook.com/TutordotcomforMilitary](https://www.facebook.com/TutordotcomforMilitary), twitter.com/tutordotcom and blog.tutor.com.

Tutor.com for U.S. Military Families is funded by the Department of Defense (DoD) MWR Library Program, the DoD Navy General Library Program and Coast Guard Mutual Assistance (CGMA). Access to Tutor.com/military for DoD Active Duty and service members is a DoD Pilot Program of limited duration, funded by the DoD Voluntary Education Program. Those who fund the program determine eligibility for its use. Long-term availability of the program is not guaranteed.

The appearance of U.S. Department of Defense (DoD) visual information does not imply or constitute DoD endorsement.



Students work one-to-one with a tutor in a secure, online classroom, which features an interactive whiteboard, file sharing and instant messaging.



10 THINGS EDUCATORS SHOULD KNOW ABOUT TUTOR.COM FOR MILITARY FAMILIES

1 Personalized On-Demand Student Support

Every Tutor.com session is one-to-one between the tutor and student. Your students get help with their own specific questions or assignments—right when they need it.

2 Extends the Learning Day

When students are struggling with homework after school, on the weekends and at midnight, our tutors are available to help any time, any day.

3 Supports Student Achievement

95% of students who use Tutor.com say it helps them complete their homework and improve their grades. That way, students come to class prepared and ready to learn.

4 Builds Confident Learners

Students also report that Tutor.com helps them feel more confident with their school work. In fact, 86% of students are more likely to take an AP course if they have Tutor.com.

5 Tutors You Can Trust

All of our tutors—more than 3,000 of them—complete a rigorous application and qualification process that includes an extensive third-party background check.

6 40+ Subjects

Students can get help with all math, science, social studies and English subjects, including algebra, chemistry, statistics, biology and essay writing. World language help is also available for Spanish, German and French.

7 Test Prep, Too

Tutors can help students prepare for the SAT, ACT or other standardized tests.

8 Accessible From Anywhere

Wherever your students have online access—at home, at school and anywhere in between—they can connect to a tutor using any internet-enabled computer or mobile device.

9 Students Love It

We get thousands of comments every day from students who tell us they “absolutely love Tutor.com” and the boost it gives their grades, confidence and interest in schoolwork.

10 It's Easy to Use and Free for Military Families

Students in military families sign in at [tutor.com/military](https://www.tutor.com/military) to connect with a tutor at no cost. All students need to do is choose a subject and ask a question. The tutor takes it from there.

“I absolutely love this site, especially being a military child, and moving around so much, and having different classes this helps so much!!!!”

~ **10th Grade, Army Student**

Questions?

Students need help accessing the service?

Contact us at militarysupport@tutor.com

tutor.com™



Tutor.com for U.S. Military Families is funded by the Department of Defense MWR Library Program and the Coast Guard Mutual Assistance (CGMA) program.

The appearance of U.S. Department of Defense (DoD) visual information does not imply or constitute DoD endorsement.



Alpha Kappa Alpha Sorority, Inc.
Lambda Chi Omega Chapter
Calling All High School Students
2016-2017 School Year

Launch Into **A.S.C.E.N.D.**

Grades 9th—12th

ASCEND Scholars will receive the following:

- ⇒ Academic Enrichment Training
- ⇒ Life Skills Training
- ⇒ College Preparatory Workshops
- ⇒ Cultural Awareness Activities
- ⇒ STEM Careers
- ⇒ Model UN Association—United Nations
- ⇒ Vocational Training



Applications are located on www.hawaiiaka1908.com

PARENT



2016 ~ 2017 SY

Leilehua High School – PTSO Registration Form

Name: _____

Phone Number: _____

Do you receive text messages at this number _____ Yes _____ No _____

Email Address: _____

STUDENT NAME	GRADE	CLUBS & SPORTS

Interested in participating:

- _____ Help with School Projects
- _____ Linking School and Community
- _____ Providing Scholarship(s) and Award(s) to deserving Students and Teachers
- _____ Lend a hand with Fundraisers or Projects ~ Involve your Teen, (family activity & value of volunteering)
- _____ Take advantage of benefits of being a Valued LHS PTSO MEMBER
- _____ Share thoughts, ideas or concerns at monthly meeting
- _____ Enhancing Educational Services

There is two Memberships to choose from:

- _____ \$10.00 Active Member (Receive Monthly Emails, Help w/ Activities & attend Meetings, Receive Sponsor Benefits)
- _____ \$25.00 No Sweat Member (Receive Monthly Emails, Don't Attend Meetings or Activities, Receive Sponsor Benefits)

Dues Paid: _____ Cash / Check # _____ Received by _____

Receipt – Membership: ACTIVE / NO SWEAT – Paid \$ _____ CASH / CHECK # _____ DATE: _____

“THANK YOU FOR SUPPORTING LHS PTSO”



Are you interested in volunteering at Leilehua High School?

We welcome volunteers on campus when volunteer opportunities are available. We do ask that before volunteering for anything on campus that you take volunteer orientation. This is about a 25 minute class, we will go over the rules and regulations of our school and have you sign the appropriate forms in order to volunteer on campus.

If you are interested, please email or call Linda Willoughby to set up an appointment for orientation.

Linda_willoughby@notes.k12.hi.us 808-305-3031

Examples of volunteering opportunities that might be available:

- Chaperoning
- Filing papers
- Making Copies
- Cleaning
- Organizing



Leadership, Humility, Service

Congratulations to all of our Leilehua fall sports teams. Seniors you will be missed !!!



Soft Tennis



Air Riflery



Cross Country



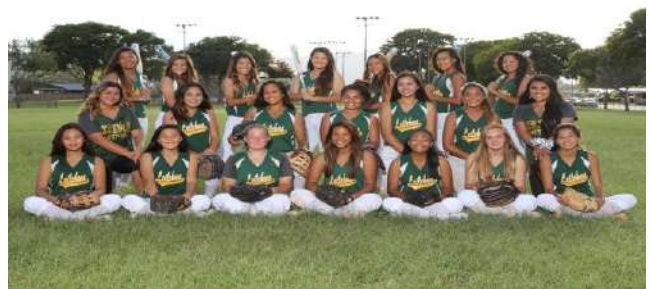
Volleyball



Softball



Football



Bowling

