

South Forsyth High School

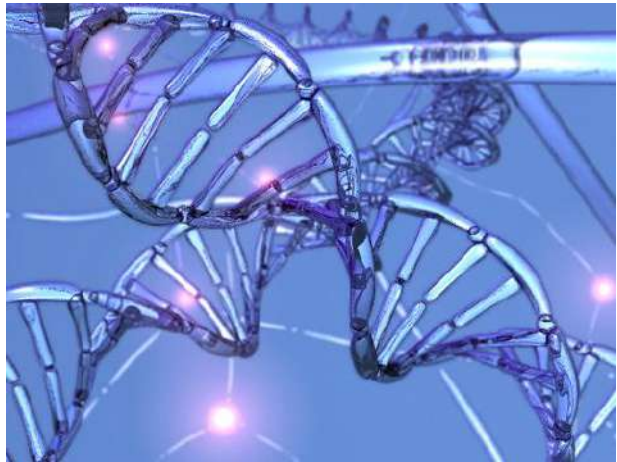
Biology Course Syllabus

Mrs. Amy Miller

2012-2013 School Year

Students, Parents, and Guardians,

Welcome to Biology at South Forsyth High School! I am Mrs. Miller, and I am very excited to engage my students in *biology*—the study of *life*. This course will help us all to better appreciate the creatures around us, understand the marvels of the body, and realize the magnificent processes of life. This informed position will also provide a platform for decision-making that reflects a protection and stewardship of our natural environment.



This is my fourth year as a science teacher at South Forsyth High School. I have a Master's degree in Science Education from the University of Georgia and a B.S. in Biological Sciences from the University of Tennessee Chattanooga, where I also played college basketball for four years. I (still) enjoy playing basketball, cycling, hiking, being outdoors, and spending time with my husband, our dog, and 10 children (chicken "children" that is).

I hope to draw connection points between content and current issues in our world, from cancer to conservation. Parents, please encourage your son or daughter to **actively participate** in class, complete **all assignments** thoughtfully and on time, and to **study** regularly outside of class. Attached you will find the course syllabus.

Please feel free to contact me at any point by email (amiller@forsyth.k12.ga.us) or at (770) 781-2264 x 101222.

Sincerely,

Amy Miller

Science Teacher

South Forsyth High School

FORSYTH COUNTY COURSE SYLLABUS - 2012-2013

COURSE TITLE: BIOLOGY → <i>Extra Help Sessions: Mon 7:45-8:15 AM; Wed 3:45-4:15 PM; Instructional Focus; other times by appointment</i>	
TEACHER NAME: Mrs. Amy Miller	E-MAIL: amiller@forsyth.k12.ga.us
ROOM: East Hall 1222	PHONE: 770-781-2264 EXT: 101222



Course Description: Students will investigate biological systems at the molecular, cellular, and macrobiological level. Hands-on laboratory exercises incorporating cellular biology, genetics, DNA technology, evolution, and ecology will be provided to assist students in their understanding of biological themes. Projects and reading assignments may be required with each unit of instruction.

Standards: Course standards can be found at www.georgiastandards.org.

Units (these should be labeled on binder divider tabs):

1 – Intro to Biology	6 – DNA/RNA Processes
2 – Biochemistry	7 – Genetics
3 – Cells	8 – Evolution
4 – Energetics	9 – Kingdoms
5 – Cell Cycle	10 – Ecology

A unit test will conclude each unit of study. This class also has a Georgia **End of Course Test*** which students will be prepared to take at the culmination of the course.

The ***End-of-Course Test (EOCT)** is a cumulative standardized assessment which counts as 20% of the overall course average. It is given upon completion of a specific course. EOCT courses are determined by state graduation requirements.

Learning Resources/Textbook(s): McDougal Littell Biology, 2008—online access via http://www.classzone.com/cz/books/bio_07/book_home.htm?state=GA Click on 'Online Book' (see ANGEL for code access)

With the emergence of technology as a tool for learning, SFHS will be utilizing various resources to assist with instruction, including **ANGEL**, **online textbooks**, and interactive websites. In addition to these web based instructional tools, this course will also have a classroom set of textbooks. Should you feel that your child would benefit from having a textbook at home in addition to *the classroom textbook*, please contact Mrs. Miller.

Keys to Mrs. Miller's Class:

Think. Work. Be involved. Be consistently curious. LEARN. Check ANGEL. You will thrive!

Required Assignments: There will be approximately 10 unit tests during the course as well as various performance based assessments that require writing, research, and creativity.

The number of formative grades such as quizzes, homework, etc. will be determined along the course of the school year. ***Students should expect a homework assignment everyday and should look over notes and new material each day.***

Items needed for class: Pens/pencils, paper, **three-ring binder with tabs/dividers**, a highlighter, energy (in the form of Adenosine Triphosphate as well as mental focus)

Extra Help: Instructional Focus—this is a GREAT time for small group help; *ask me for a pass!* I am also available Monday morning from 7:45-8:15 and Wednesday afternoon from 3:45-4:15. When possible, please make an appointment ahead of time so that I can devote my full attention to your needs.

Make-up Work: When students are absent from school, they are responsible for all missed work and assessments. *Students should see ANGEL immediately (Calendar, followed by Lessons) and can find handouts in our classroom.* A student who is absent on the class day immediately before a regularly scheduled assessment/assignment will be responsible for completing the assessment/assignment on the regularly scheduled day and time. Students who have been absent more than two consecutive days (including the assessment day) will be given five (5) school days to make up the assessment and/or other assignments. This does not include major projects, research papers, tests, etc. where the deadline/date has been posted in advance. The teacher has the discretion to grant a longer period of time to make up work if there are extenuating circumstances.

A daily update of everything done in class and access to files used will be posted on ANGEL. Check it every day!

Late Work: *Homework must be completed on the day it is due.* Long-term projects must be turned in on the previously scheduled date. If a student is absent on that day, they must turn in the assignment the day they return to possibly receive full credit. For every day late thereafter, their highest possible grade will be a 70. All other late work will be handled on a case-by-case basis: students must see me in extenuating circumstances.

Grading Calculations & Policy:

Course Average = 40% (1ST Sem. Course Work) + 40% (2ND Sem. Course Work) + 20% EOCT or Final Exam

1ST & 2ND Semester Course Work = 75% Summative + 25% Formative

(Concept of formative assessment: <http://pareonline.net/getvn.asp?v=8&n=9>)

A = 90 – 100

B = 80 – 89

C = 70 – 79

Failing = Below 70

***Formative** Assessments include, but are not limited to homework, class work, labs, quizzes, practice tests, rough drafts, and sections of projects/ research papers/presentations.

***Summative** Assessments include, but are not limited to unit tests, final projects, final essays, final research papers, and final presentations.

-Work Habits will also be evaluated every term based on the categories of Responsibility, Participation, Assignment Completion, & Interpersonal Skills