

Community Partner

In Pursuit of *Exceptional*

publix®

SUPER MARKETS

Locust Grove



CLUSTER

HENRY
COUNTY SCHOOLS

#YouBelongInHenry

In Pursuit of *Exceptional*

Henry County Schools Community Conversations

Locust Grove



CLUSTER



LGE



I believe...



HENRY COUNTY SCHOOLS

and our COMMUNITY share

A VISION TO

ensure a
**high-quality,
world-class**
education for
every student.

and a singular

MISSION TO

empower all students with
**exceptional
opportunities**
and **access**
that lead to
success

in a global society.



Unified Governance

An system for educating, led by the Henry County Board of Education



A COMPASS FOR THE FUTURE

CORE BELIEFS | We believe

Each student can learn at or above grade level and will have an equal opportunity to do so

Family and community involvement is critical to student success

All learning environments should be supportive, safe, and secure

Effective teachers, leaders, and staff, produce excellent results

STRATEGIC ACTIONS | To advance

And accelerate learning opportunities and experiences for students

And support effective school leaders and teachers

Community and stakeholder engagement so that all students, families and employees feel welcomed and valued

Student and employee health, wellness, and support structures

A high-performing operational culture

Community-Inspired 2021-2026 Strategic Plan
Developed by the Henry County Board of Education

CORE POLICIES | BAB, IAB, and IB, call for

An Aligned System of Teaching & Learning

A System of Accountability

A Framework for Continuous Improvement

A Plan to Advance Opportunities, Access, and Outcomes

PRIORITY OUTCOMES | Every student will be

Ready for kindergarten

Ready to read and write at or above grade level each year with a curriculum rich literature and world languages

Ready for success in advanced coursework at every grade level

Ready for life with strong soft skills, personal health, and well-being

Ready for college, career and post-secondary successes with industry certifications, competitive test scores and scholarship awards

In Pursuit of *Exceptional*





Locust Grove Cluster

LGHS American Literature +7

LGHS Algebra 1 +12

LGHS Biology +11

LGMS Algebra 1 +30

LGMS 7th ELA (Met)

LGE 5th Math +2

UGE 3rd ELA +1

UGE 3rd Math (Met)



Bright Spots!

In Pursuit of *Exceptional*



Dutchtown Cluster

DHS American Literature (Met)
DHS Algebra 1 +10
DMS 8th Math +1
DMS 7th ELA +2
PCE 5th Math +6
PCE 4th ELA (Met)
PCE 4th Math (Met)
ROE 4th Math (Met)



Eagle's Landing Cluster

ELHS Algebra 1 +6
ELMS Algebra +7
ELMS 8th Math +5
ELMS 8th Sci +11
FLE 4th ELA +1
FLE 4th Math +3
OKE 3rd ELA (Met)
ELMS 6th Reading on/above (Met)



Excel Academy

8th SS +1
7th Math +2
Algebra I (Met)



Luella Cluster

LHS Algebra 1 +6
LMS 8th Math +3
BES 3rd ELA +9
BES 3rd Math +10
LES 3rd reading on/above +1
BES 3rd reading on/above +2



Hampton Cluster

HHS American Literature +1
HHS Algebra 1 +7
HMS Algebra 1 +19
HMS 8th Math +3
HMS 7th ELA +5
MCE 5th ELA +6
HES 3rd Math (Met)
RCE 3rd ELA +2
RCE 3rd Reading on/above +1
MCE 5th Reading on/above (Met)



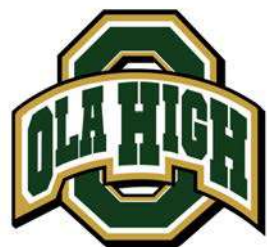
McDonough Cluster

MHS Algebra 1 (Met)
MMS 7th ELA +2
WLE 5th ELA +4
WLE 4th ELA +3
WLE 3rd ELA +6
WCE 5th Reading on/above (Met)
WLE 3rd Reading on/above +6
WLE 4th Reading on/above +1



Bright Spots!

In Pursuit of *Exceptional*



Ola Cluster

OHS Algebra 1 +9

NHE 5th Sci +7

NHE 4th ELA (Met)

NHE 5th Reading on/above +2

Union Grove Cluster

UGHS Algebra 1 +20

UGMS Algebra 1 +19

UGMS 8th Math +14

UGMS 8th SS +7

UGMS 6th ELA (Met)

UGMS 6th Math +5

HFE 5th Sci +7

TRE 5th Sci (Met)

HFE 4th ELA +1

TRE 4th ELA +3

UGMS 6th Reading on/above +5

Stockbridge Cluster

SHS Algebra 1 +9

SHS Biology +4

SHS US History +8

ARM Algebra 1 +47

ARM 8th Math +20

ARM 8th Sci +6

SMS 8th Math +2

ARM 7th ELA +5

SMS 7th ELA +1

ARE 4th Math +8

ARE 4th ELA +2

ARM 8th Reading on/above +1

SMS 6th Reading on/above (Met)



Woodland Cluster

WHS Algebra 1 +8

WMS Algebra 1 +29

WMS 8th Math +4

WMS 8th SS +3

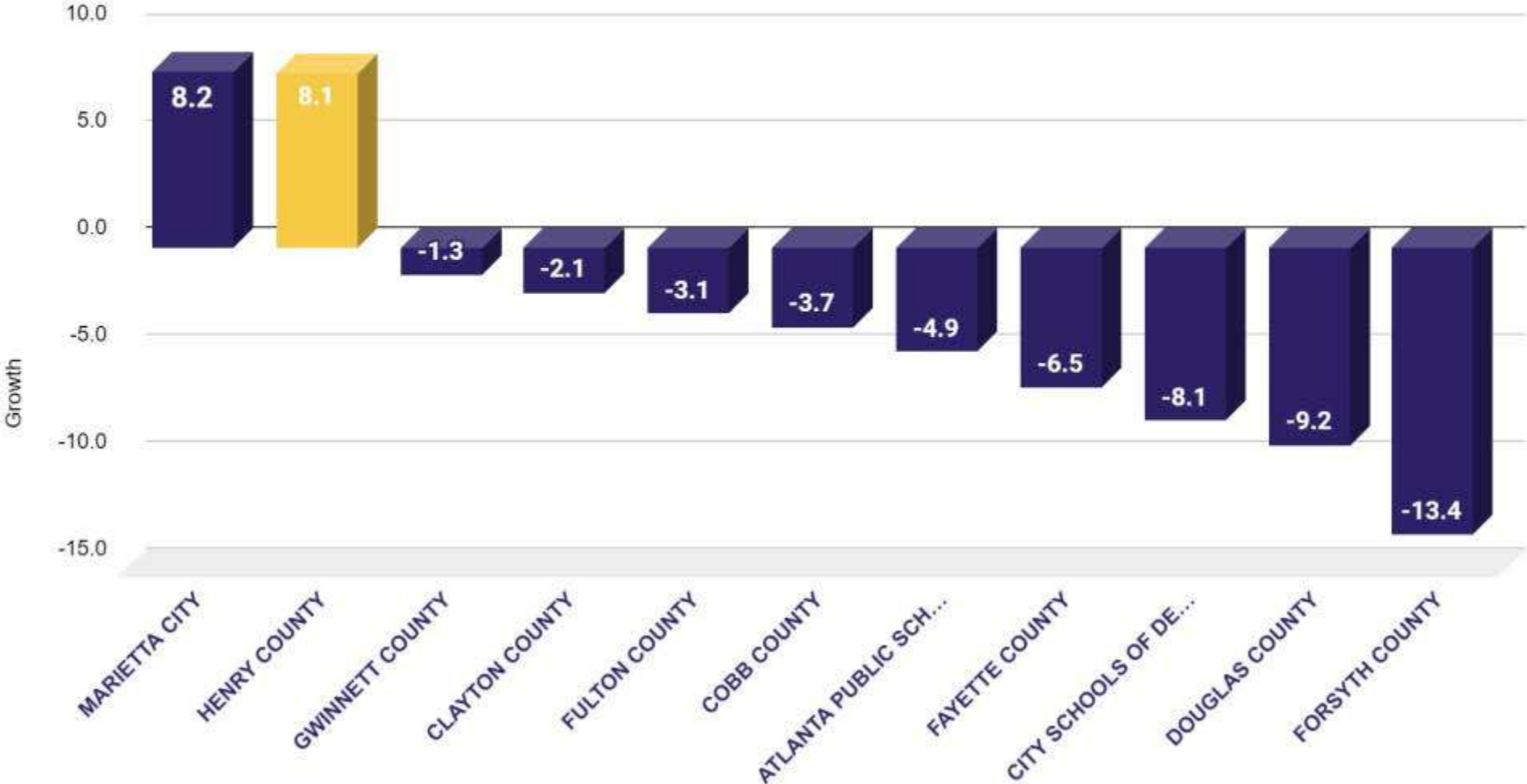
PGE 4th Math +6

WES 3rd Math +3

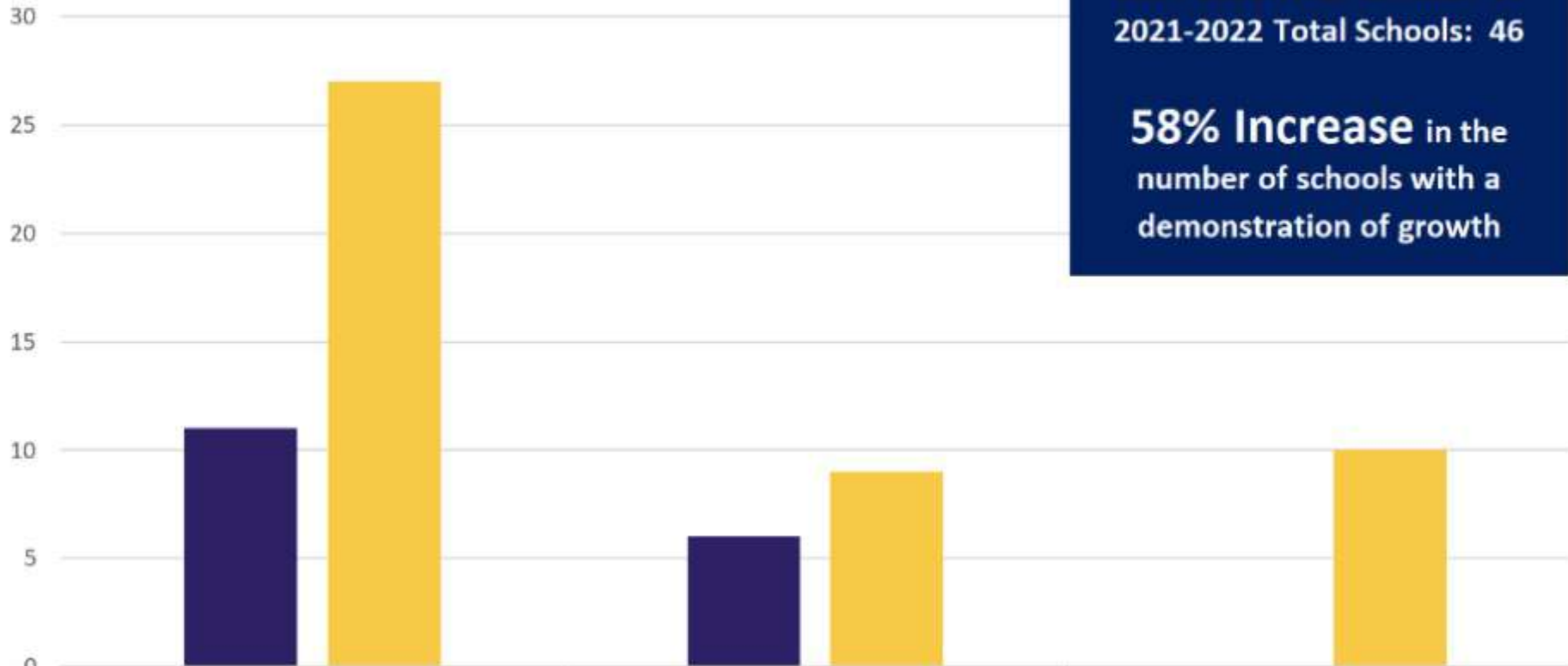
PGE 4th Reading on/above +8



Large Metro District Systems Algebra I Growth 2019 to 2022



Number of Schools with a demonstration of Growth in Reading On or Above Grade Level



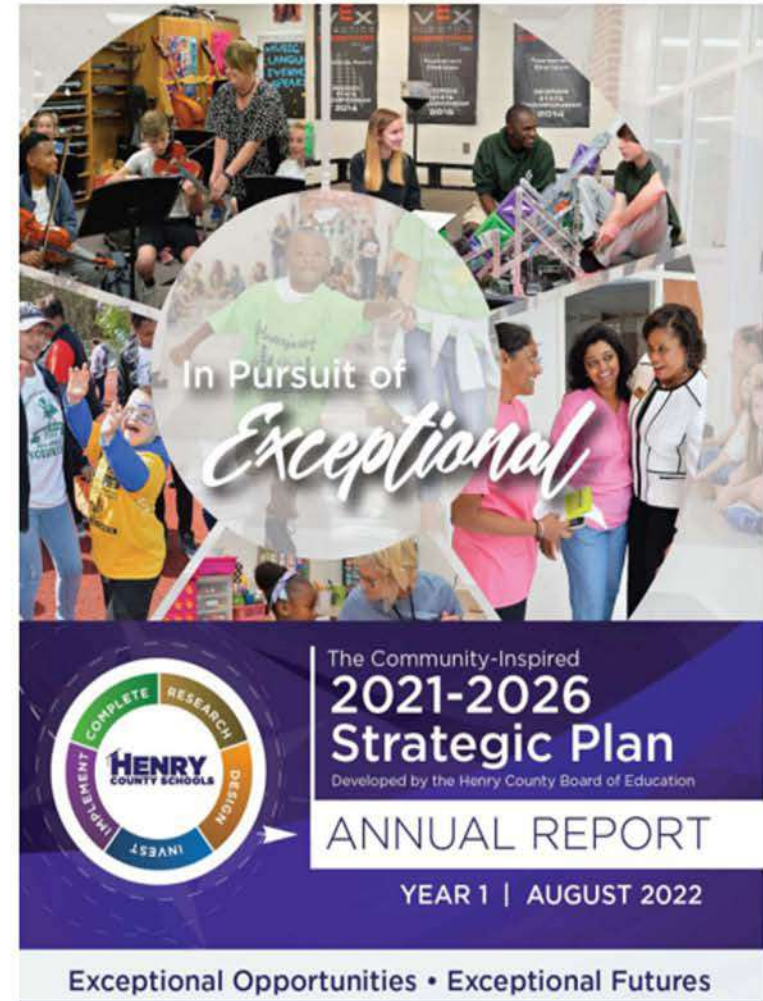
2019-2021 Total Schools: 17
2021-2022 Total Schools: 46

58% Increase in the number of schools with a demonstration of growth

■ 2019-2021	11	6	0
■ 2021-2022	27	9	10

5-Year Community Inspired Strategic Plan

- Priority Student Outcome
 - 3 Priorities
 - 12 Goals
 - 24 Metrics - 9 identified so far
- Strategic Actions
 - #1 Advance PreK-12 Learning Opportunities and experiences for all students
 - #2 Advance effective school leadership and classroom instruction
 - #3 Advance connectivity to value and engage all student, employees, families and partners in our growing community
 - #4 Advance student and employee health, wellness and support structures
 - #5 Advance a high-performing organizational culture



Priority Student Outcomes

Advancing opportunities, access, and outcomes for every student in:

Literacy Proficiency

Note: Unless otherwise noted, the Board of Education is in the process of reviewing baseline data and will set a 5 year goal for each metric;

- Reading growth from Grade to Grade**
 Baseline **51%** **65%** 2026 Goal
- Reading and writing at or above grade level**
 - Reading: Baseline **56%** **69%** 2026 Goal
 - Writing: Baseline **00%** **COMING 2023**
- Access for every child in diverse grade level content, literature, resources, and world language programs**
 - Grade level content: Baseline **00%** **COMING 2025**
 - Literature: Baseline **00%** **COMING 2025**
 - Resources: Baseline **00%** **COMING 2025**
 - World Language Programs: Baseline **22%** **70%** 2026 Goal

Readiness to Learn

Note: Unless otherwise noted, the Board of Education is in the process of reviewing baseline data and will set a 5 year goal for each metric;

- Beginning school Kindergarten Ready**
 - GKIDS Readiness: Baseline **34%** **44%** 2026 Goal
 - Gross Motor Skills: Baseline **00%** **COMING 2023**
- Participation in advanced coursework**
 Baseline **23%** **34%** 2026 Goal
- Students demonstrating personal health & well-being**
 Baseline **00%** **COMING 2023**

College, Career, and Life-Ready

Note: Unless otherwise noted, the Board of Education is in the process of reviewing baseline data and will set a 5 year goal for each metric;

- High school graduates meeting competitive acceptance requirements for University System of Georgia colleges and universities; and qualification for Zell Miller Scholarships**
 - Top 25% SAT/ACT College Entrance Exam Baseline: Baseline **00%** **COMING 2023**
 - Graduates who qualify for Zell Miller scholarship: Baseline **4%** **7%** 2026 Goal
- High school graduates meeting college & career readiness benchmarks in English Language Arts and Mathematics**
 - ELA Readiness: Baseline **54%** **70%** 2026 Goal
 - Math Readiness: Baseline **30%** **50%** 2026 Goal
- HCS Graduate Outcomes**
 Baseline **00%** **COMING 2023**
- Students/Graduates completing career inventories, internships/apprenticeships, and industry certifications**
 - Internships and Apprenticeships: Baseline **00%** **COMING 2023**
 - CTAE Pathway Completers who are eligible for industry credentials: Baseline **00%** **COMING 2023**
 - Career Inventories: Baseline **00%** **COMING 2023**
- Students demonstrating financial literacy, soft skills, and mastery of IEP transition goals (ESE)**
 - Financial Literacy: Baseline **00%** **COMING 2024**
 - Soft Skills: Baseline **00%** **COMING 2024**
 - IEP Transition Goals: Baseline **00%** **COMING 2024**
- Participation & performance of students on PSAT:**

PARTICIPATION	PSAT 8	Baseline 00% COMING 2022	PERFORMANCE	PSAT 8	Baseline 00% COMING 2022
	PSAT 10/NMSQT	Baseline 86% 85% 2026 Goal		PSAT 10/NMSQT	Baseline 24% 38% 2026 Goal

Strategic Action 1

In Pursuit of *Exceptional*

*It's all about
LEARNING!*

Advance Pre-K-12
learning opportunities
and experiences for all
students.

- STEM programs & STEM-focused high school
- Robotics & coding
- Fine Arts enhancements



Year 1 – Accomplishments

- STEM Labs and Robotics in all Elementary Schools
- Computer Science and Robotics in all Middle Schools
- Investment in Fine Arts in Elementary, Middle, and High Schools
- Investment in Writing Resources and Writing Instruction
- Growth in Gifted Programs, Accelerated 4th and 5th Grade Math, HS courses in Middle School, and AP courses in High School
- Adoption of first-ever financial literacy standards

Years 2 & 3 – Coming Soon!

- World language in Elementary School
- Theater programs in Elementary, Middle, and High School

Strategic Action 2

*It's all about
LEADERSHIP &
OUTSTANDING
INSTRUCTORS!*

Advance effective
school leadership and
classroom instruction.

- Investments in teacher recruitment & retention
- School leadership development



In Pursuit of *Exceptional*

Year 1 – Accomplishments

- Teacher Leader Academy
- Highly Effective Classroom Components
- Comprehensive Compensation and Classification Improvements

Years 2 & 3 – Coming Soon!

- Highly Effective Leader Components
- Enhanced Leadership Development Programs
- Enhancing Teaching as a Profession Pathway (HS) and Re-designing teacher preparation programs

Strategic Action 3

*It's all about a sense
of BELONGING &
being WELCOMED
and LOVED in our
district!*

Advance connectivity to
value and engage all
students, employees,
families and partners in
our growing community.

- Welcome Center
- 501(c)(3) Foundation
- Expanding Partners in Ed



In Pursuit of *Exceptional*

Year 1 – Accomplishments

- Welcome Center
- Online Back-to-School Paperwork
- Improved Translation Services
- Henry Connects Family View

Years 2 & 3 – Coming Soon!

- Henry County Schools (501c-3) Foundation
- Expanded Partners in Education Program
- Expanded Mentoring and Volunteer Program

Strategic Action 4

*It's all about the
WELL-BEING of
everyone in our
school community!*

Advance student and
employee health,
wellness, and support
structures.

- Comprehensive school-wide counseling program
- Physical, emotional, academic, & mental health supports through partnerships
- Employee wellness investment



In Pursuit of *Exceptional*

Year 1 – Accomplishments

- Comprehensive Counseling Program
- Henry's Future Graduation and Post-Secondary Planning Tool
- Mental Health and Wellness Facilitator
- School-based Health and Wellness Plans
- Screen-time Balance in classroom instruction

Years 2 & 3 – Coming Soon!

- Enhanced Academic Counseling and Graduation Planning Guidance

Strategic Action 5

It's all about our district OPERATING like a well-oiled system!

Advance a high-performing operational culture.

- Acquire an Enterprise Resource Management system
- Data infrastructure
- Growth & replacement for furniture, equipment, & supplies



In Pursuit of *Exceptional*

Year 1 – Accomplishments

- Design of Asset Management Manual and Framework for:
 - Elementary School classroom equipment and furniture (11/22)
- Business Practice Analysis and Solicitation for Enterprise Resource Management System (ERP)

Years 2 & 3 – Coming Soon!

- Pilot 3 Elementary Schools for Growth and Replacement according to Asset Management Manual
- Design of Asset Management Framework for:
 - Middle School classroom equipment and furniture
 - High School classroom furniture and equipment
 - Athletic Facilities and Sports Team equipment
 - Orchestra, Band, Theater, Visual Arts, Chorus, and Marching Band equipment and supplies
- Acquisition and Transition of ERP

E-SPLOST VI Status Update

- HVAC Elementary School Gyms (29 systems) (ESSER funds)
- Transportation Improvement Planning
 - 125 New Buses
 - Second Facility Planned
- School Safety Buzzer System Installation
- 43,000 student devices distributed in 7 days
- Advanced Placement Instructional Materials Acquired
- Facility Growth Projects in Progress:
 - Birch Creek ES (relieves Oakland ES and Wesley Lakes ES)
 - DHS and DMS Additions
 - LGHS Addition
 - OHS and OMS Additions
 - UGMS Addition
 - Wolfe Creek ES (relieves Unity Grove ES and Locust Grove ES)
 - STEM High School



HENRY
COUNTY SCHOOLS



SAFE HENRY

Working Together Everyday to Ensure a Safe and Secure Henry County Schools

BOE's Prior Commitments, Enhancement & Investments

No-Cost Commitments

- All exterior doors will remain locked at all times during business hours (except one front door)
- All interior doors will remain locked at all schools during business hours (i.e. classroom doors)
- Review of Emergency Ready Reference Manual w/ all principals and asst. principals
- Intruder training (lockdown) conducted 2x per year in all schools
- All school and district office personnel will prominently display their ID badges at the school and district office buildings
- All school and staff personnel will address any visitor who does not display a Henry County Schools' ID badge or visitor's badge

No-Cost Enhancements

- All schools will practice standardized check-in procedures (CheckMate System)
- Update to functionality of CheckMate System to include:
 1. Ability to take a photograph of visitors and add a photo to the adhesive badge
 2. Ability to scan the back of the visitor's driver's license to automatically populate the personal information fields

Investments

- Pilot a Campus Emergency Response System (High Schools)
- Pilot a Buzzer/Key Card System at the newly constructed McDonough High School and McDonough Middle School
- Five additional School Resource Officers (SRO); providing a 1:1 ratio in middle and high schools
- High school single-point entry doors like the middle and elementary schools

Additional Investments

- Full implementation of Campus Response System/Crisis Alert System
- Mental Health & Wellness Facilitator in Every School
- Additional Social Workers & Psychologists
- Code of Conduct modifications

2022-2023 Enhancements


- Increased Ratio of School Resource Officers
- Campus Safety Monitors (MS & HS)
- School Safety Team Daily Protocols & Monitoring
- Enhanced Anonymous Tip Line to include text option -
“See Something, Say Something”
- Clear Bags at Athletic Events and Performing Arts Center Events

Daily Monitoring of Safety Practices

- All exterior doors are closed and locked with single-point entry.
- All interior doors are closed and locked.
- All visitors enter through the front office and sign in using the CheckMate system to receive a visitor badge that must be worn.
- All employees wear ID and a campus alert/crisis response badge.
- Appropriate supervision is in place during arrival, transitions, breakfast/lunch, and dismissal.

Monitoring of Safety Drills

Drill	Frequency
Fire/Evacuation Drill	Beginning of school year and monthly
Bus Evacuation Drill	Beginning of school year
Lockdown Drills (Hard Lock Down) (Soft Lock Down)	Twice per year
Severe Weather Drill	Twice per year




Working Together Everyday to Ensure a Safe and Secure Henry County Schools

HENRY COUNTY SCHOOLS


SAFETY ROUTINES

District-Wide Drill Participation


Henry County Families:
As part of the HCS process to ensure a safe and secure learning environment, all schools participate in required monthly safety drills. These required drills include:



Fire Drill/Evacuation Drill
This drill is used when a situation requires an evacuation from the building such as a fire alarm. All school staff, students, and visitors, will evacuate the building.



Severe Weather Drill
This drill is used for weather related warnings such as a tornado watch or severe thunderstorm. During this drill all school staff, students, and visitors, will assume a safe position within the school building.



Lockdown Drill
This drill is used for a more significant event in the school environment. During a lockdown drill all school staff, students, and visitors, will assume a safe position within the school building.

School leaders determine specific dates and times for the drills in accordance with state codes and individual school needs. Teachers and administrators have specific talking points to use before and after safety drills and additional supports for our primary students. If you, or your child, have any concerns or questions about our safety routines please contact your school.

Thank you for the support and confidence you place in Henry County Schools daily to ensure that we provide a safe and secure learning environment for all students.

www.henryk12.ga.us

Henry County Schools | Board of Education | 33 N. Zack Hinton Pkwy | McDonough, GA, 30253 | 770.957.6601

Continuous Improvement

Future Commitments/ Enhancements/ and Investments

- Increase number of security cameras throughout the district
- Integration of cameras with the Real Time Crime Center
- Explore the most advanced technologies for detection and prevention efforts
- Ongoing growth of safety protocols

I believe...

Locust Grove



CLUSTER

In Pursuit of *Exceptional*

Bright Spots

Elementary Schools

- LGES - 5th Grade Math +2
- LGES - Outperformed the State on the 2022 Georgia Student Health Survey, Connectivity Questions
- UGES - 3rd Grade ELA +1
- UGES - Increase in 3rd Grade Math
- UGES - Exceeding 85% on the 2022 Georgia Student Health Survey, Connectivity Questions
- UGES - Awarded Operational Level for PBIS



LGHS American Literature +7
LGHS Algebra 1 +12
LGHS Biology +11
LGMS Algebra 1 +30
LGMS 7th ELA (Met)
LGE 5th Math +2
UGE 3rd ELA +1
UGE 3rd Math (Met)

Locust Grove



CLUSTER

Locust Grove Middle School

- Increased performance in 7th Grade ELA
- Algebra 1 +30
- Significant Increase in Access to Advanced Coursework
- Outperforming the State on the 2022 Georgia Student Health Survey, Connectivity Questions
- Increasing opportunities for co-curricular activities
- Active BETA Club and NJHS
- Water Tower Competition (STEM)
- Spelling Bee Finalist
- Literacy Days Finalist (Writing)

Locust Grove



CLUSTER

Locust Grove High School

- Algebra 1 +12
- American Literature +7
- Biology +11
- Significant Increase in Access to Advanced Coursework
- Outperformed the state on the 2022 Georgia Student Health Survey, Connectivity Questions
- Increased SAT participation from 2021
- Individual State Wrestling Champion

Locust Grove



CLUSTER

Cluster Improvement Work/Goals

- The Locust Grove Cluster Improvement Plan focuses specifically on the area of communication to include academic articulation and culture by clearly defining our core values through strategic direction and focus.



Strategic Plan Implementation Highlights

- Elementary
 - Implementation of K-5 HMH and other District Aligned Resources and Assessments
 - Advanced Math (4th and 5th grade)
 - STEM Labs and Robotics Program
 - Choral Programs
 - Art Club/Art Exhibit participation
 - Prioritize Kindergarten Readiness
 - Collaboration with HS CTAE Programs
 - Enhanced HTLS for Financial Literacy approved by BOE



Strategic Plan Implementation Highlights

- Middle
 - HS Advanced Coursework (6 offerings)
 - PSAT: all 8th graders
 - Computer Science course offered in 8th grade
 - Increased World Languages opportunities
 - Development of an Orchestra program to be offered in 23-24
 - Increasing Connectivity with Community Involvement through Core Values work and PTO



Strategic Plan Implementation Highlights

- High
 - Opportunities to advanced coursework: AP classes and pathway completion
 - Capstone work for college and career readiness
 - Cluster support and service
 - Advisories and councils
 - Unification and partnerships in the community
 - World Languages program and service for cluster
 - SAT offering at the high school

True BLUE Student Voices

- Skyla Gilbert
- Jack Pringle
- Tina Tutuwan
- Loren Upchurch



We believe in a student-centered learning environment

Skyla Gilbert

District Priority Student Outcomes:

- Participation in advanced coursework
- Demonstrating personal health and well being
- CTAE Pathway Completers
- Soft Skills



We lead through service

Jack Pringle

District Priority Student Outcomes:

- Participation in advanced coursework
- CTAE Pathway Completers
- Soft Skills
- Internships/Apprenticeships
- STEM programs
- Connectivity to community
- Literacy growth



We unify our community

Tina Tutuwan

District Priority Student Outcomes:

- Participation in advanced coursework
- Soft Skills
- Internships/Apprenticeships
- Access to World Language programs
- Connectivity to community



We excel in all that we do

Loren Upchurch

District Priority Student Outcomes:

- Participation in advanced coursework
- Soft Skills
- Competitive acceptance requirements for colleges and universities
- Zell Miller Scholarship qualification
- Access, outcomes, and opportunities within SAT



Safety and Security

- Safety and Security Measures
- Increased SRO presence
- Hall Monitor positions
- Clear Bag Policy
- Increased cameras in school
- Buzzer system
- Centegix
- Daily Security Checks
- MS/HS-Campus Safety Monitors

Locust Grove



CLUSTER

Community Conversation

Seeking your insights, feedback and recommendations as we continue to improve the following areas:

Academics

Safety and Security

Strategic Plan

Wellness

Move to the facilitated sessions in the four corners of the cafeteria for small group feedback groups.

#YouBelongInHenry

In Pursuit of *Exceptional*

Henry County Schools Community Conversations

Locust Grove



CLUSTER



LGE

