

Name: _____

Date: _____

1. Which group of animals has the MOST similar type of body coverings?

- A. humans, dogs, horses
- B. owls, beetles, chickens
- C. grasshoppers, bats, worms
- D. snails, whales, sunfish

2. Simon's third grade class uses a peach as a model of a cell. Which of these is the cell wall?

- A. the peach pit
- B. the peach skin
- C. the peach stem
- D. the peach juice

3. New bacteria comes from

- A. unclean water.
- B. mosquitoes.
- C. other bacteria.
- D. flies.

4. Which are NOT found in both birds and insects?

- A. eggs
- B. feathers
- C. legs
- D. wings

5. Which object would best demonstrate how roots function in the soil?

- A. rock
- B. sponge
- C. mirror
- D. jar of water

6. Racedogs would MOST LIKELY be crossbred for which characteristic?

- A. long hair
 - B. highly developed sense of smell
 - C. companionship
 - D. speed
-

7. How are dandelion seeds different from apple seeds?

- A. Dandelion seeds produce new plants.
 - B. Dandelion seeds are not formed from the flowers.
 - C. Dandelion seeds need rain, soil, and sunlight to germinate.
 - D. Dandelion seeds are light and can be carried by the wind.
-

8. The frog, toad, and salamander are grouped together because they share all of the following characteristics EXCEPT

- A. being cold-blooded.
 - B. having scales.
 - C. laying eggs.
 - D. reproducing in water.
-

9. Plants growing from maple seeds always become maple trees. Why is this true?

- A. Maple trees are easy to grow from seeds.
 - B. The "pattern" for what seeds can become is determined by the parent plant.
 - C. Maple seeds always fall where it is best for growing maple trees.
 - D. The maple seeds that could become other kinds of plants are never healthy.
-

10. Organisms with a body covering of feathers are classified as

- A. birds.
 - B. fish.
 - C. insects.
 - D. mammals.
-

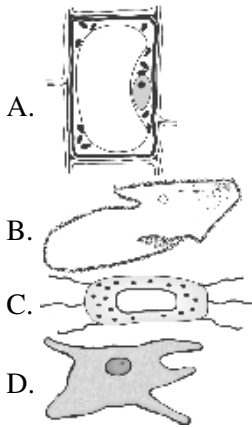
11. A reason scientists crossbreed dairy cattle is to produce cows that

- A. give more milk.
 - B. have fewer calves.
 - C. eat corn instead of hay.
 - D. drink more water.
-

12. Which of the following is NOT a mammal?

- A. a cow
 - B. a dog
 - C. a duck
 - D. a zebra
-

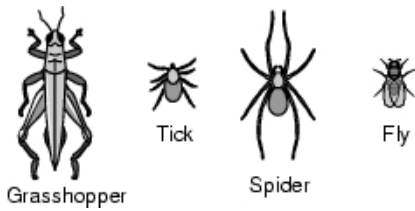
13. Which cell is a plant cell?



14. Which pair of kingdoms has members that can make their own food?

- A. Plants and Animals
 - B. Fungi and Protists
 - C. Protists and Plants
 - D. Monerans and Fungi
-

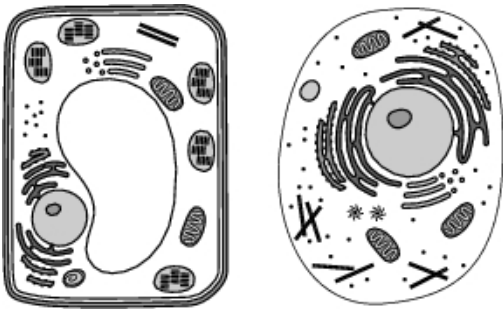
15. Jennifer looks at the animals shown below.



Which characteristic can she use to divide these animals into two equal groups?

- A. the number of legs
 - B. the number of eyes
 - C. the presence of claws
 - D. the presence of an exoskeleton
-

16. In biology class, Felip was looking at plant and animal cells through a microscope.



How could he tell which cell is a plant cell and which cell is an animal cell?

- A. Organelles are only in plant cells.
 - B. Nuclei are only in animal cells.
 - C. Mitochondria are only in animal cells.
 - D. Cell walls are only in plant cells.
-

17. Which is NOT a characteristic of organisms in the animal kingdom?

- A. They use sunlight to produce their own food.
 - B. They are made up of many different cells.
 - C. They have the ability to move.
 - D. They have cell membranes.
-

18. Several scientists observe an animal with hair and wings. This animal is a

- A. bat.
 - B. bird.
 - C. butterfly.
 - D. flying squirrel.
-

19. Why is a microscope needed to view cells?

- A. to separate cells from each other
 - B. to make cells look bigger than they are
 - C. to make cells look smaller than they are
 - D. to hold the cells still so they can be seen
-

20. A paramecium is a one-celled animal. Which of the following MUST be true about the paramecium?

- A. Its one cell does everything it needs to live.
- B. It can only live inside the cells of other living things.
- C. It is the smallest living thing.
- D. It causes dangerous diseases.

Answer Key

1. A) humans, dogs, horses
2. B) the peach skin
3. C) other bacteria.
4. B) feathers
5. B) sponge
6. D) speed
7. D) Dandelion seeds are light and can be carried by the wind.
8. B) having scales.
9. B) The "pattern" for what seeds can become is determined by the parent plant.
10. A) birds.
11. A) give more milk.
12. C) a duck
13. A)
14. C) Protists and Plants
15. A) the number of legs
16. D) Cell walls are only in plant cells.
17. A) They use sunlight to produce their own food.
18. A) bat.
19. B) to make cells look bigger than they are
20. A) Its one cell does everything it needs to live.