

What is Pitch?

General Music, Grade K-2, Unit 2, Lesson 2
Music is Tuneful

Essential Questions

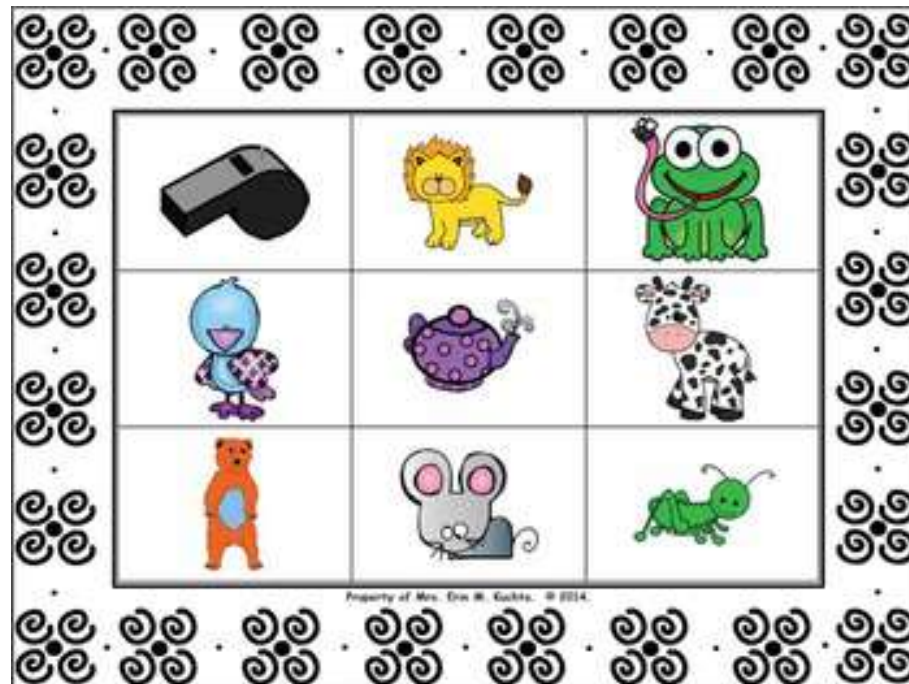
- What is pitch?
- Does the size effect the sound?



Learning Objectives

By the end of this lesson I can...

- Identify sounds as high or low by sight and sound.



Size effects pitch!

The bigger the instrument, the lower the sound!



The smaller the instrument, the higher the sound!

Which is HIGH? Which is LOW?



Which is HIGH? Which is LOW?



Which is HIGH? Which is LOW?



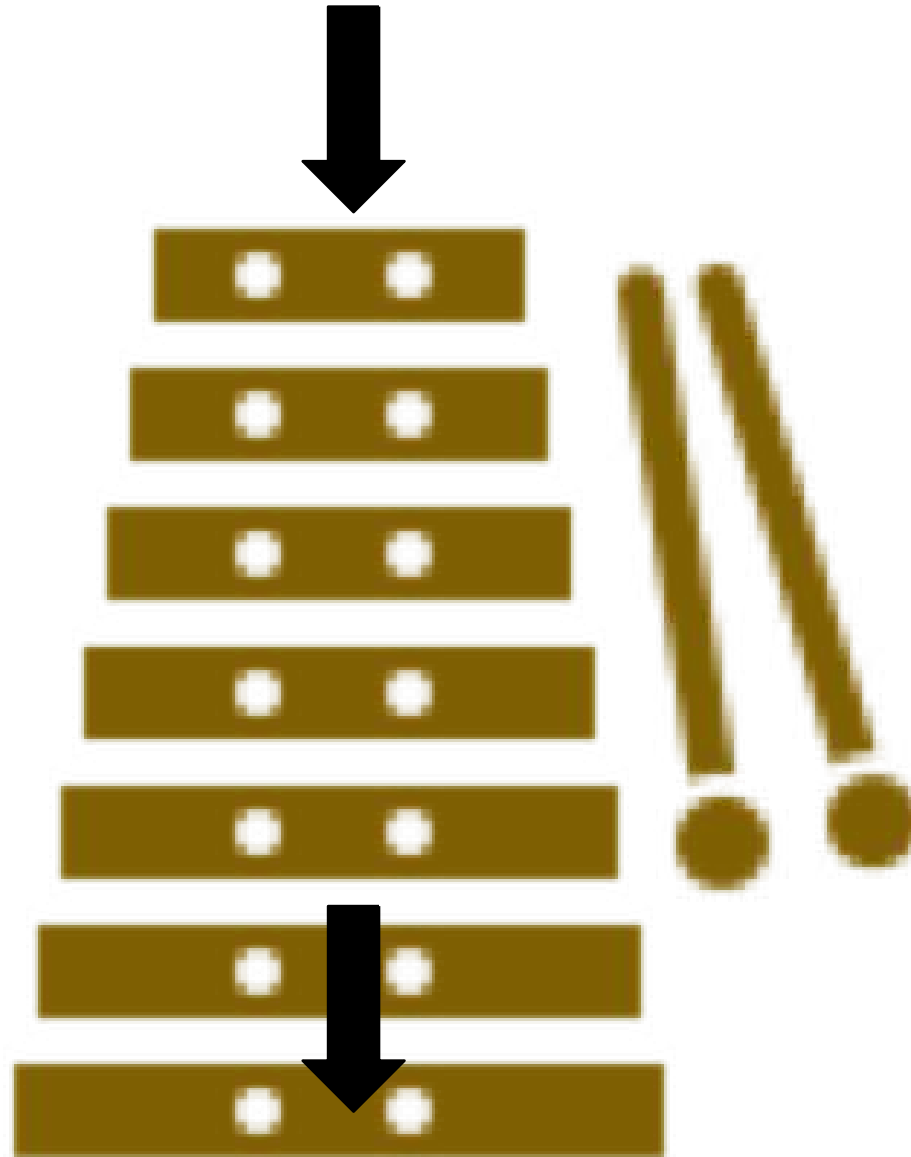
Which is HIGH? Which is LOW?



Which is HIGH? Which is LOW?



Which is HIGH? Which is LOW?

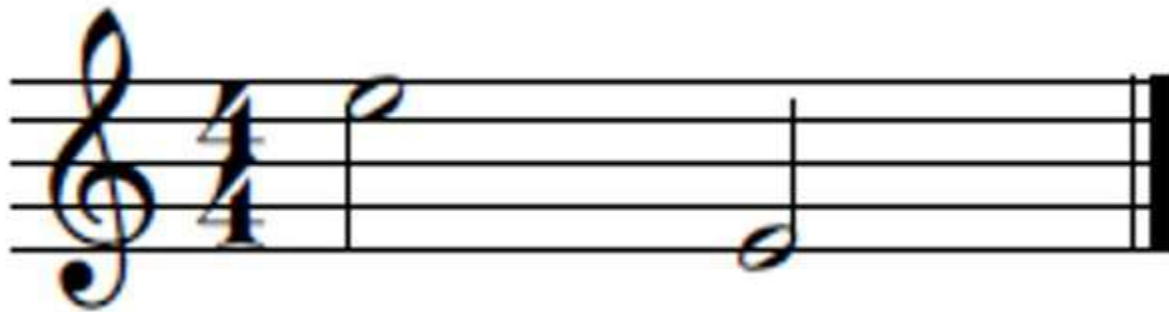


Pitch is a sound that can be high or low.

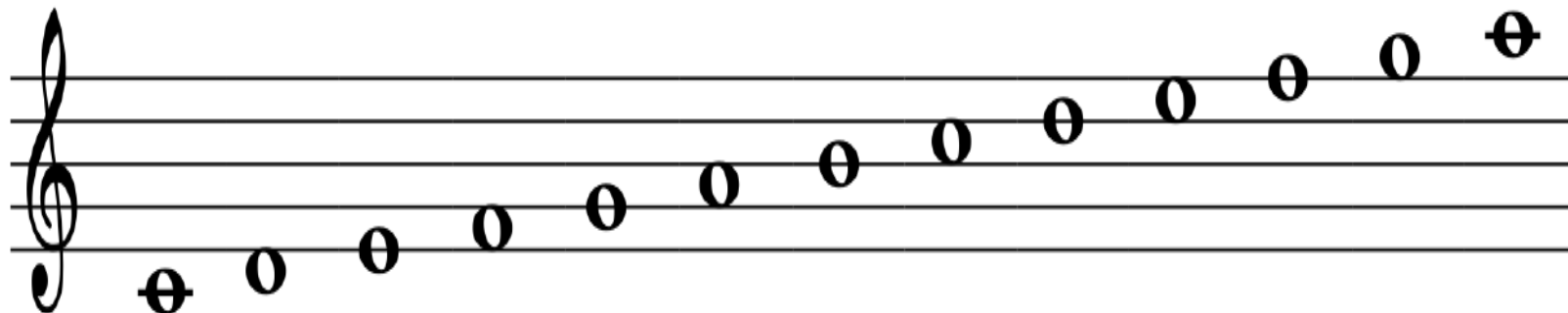
- What are some high and low sounds that you hear at home?



High pitches are closer to the top of the music staff, and low pitches are closer to the bottom!

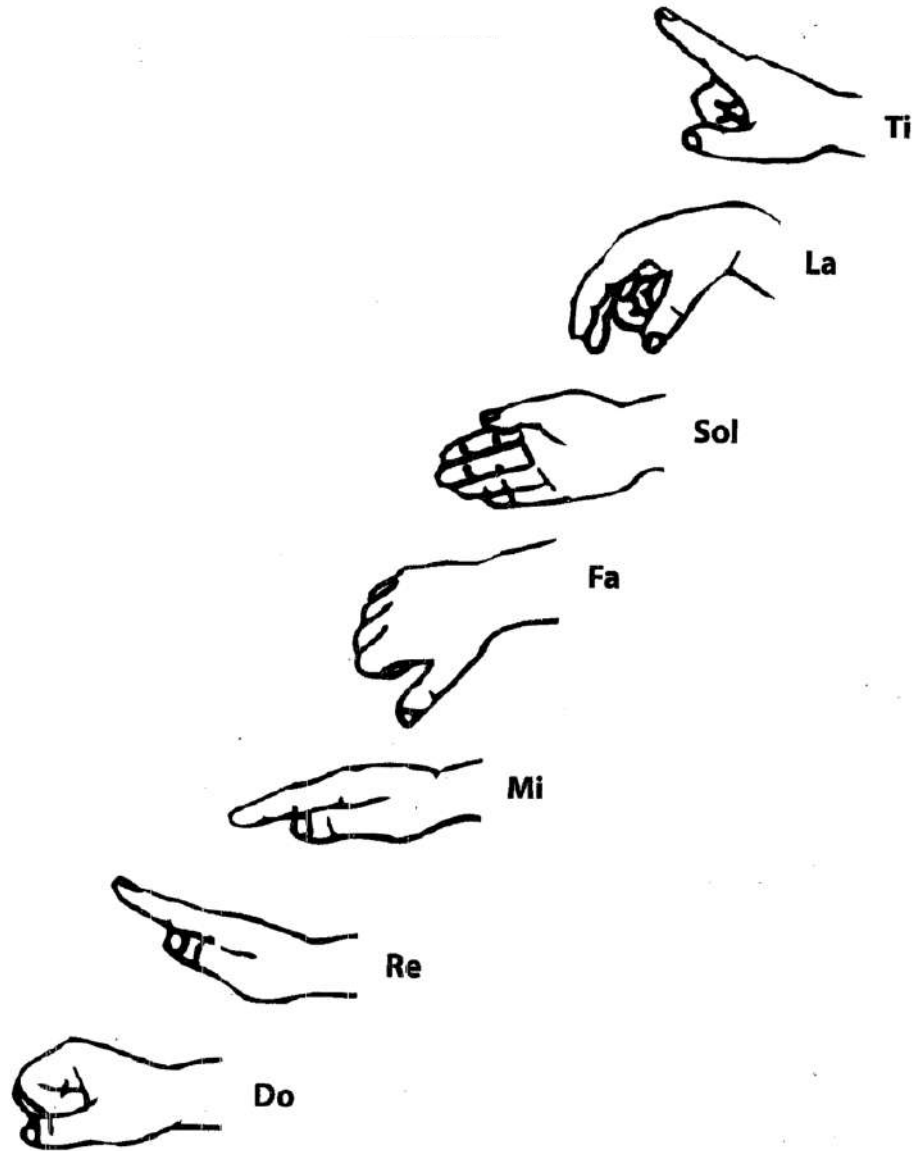


Which pitches are high? Which pitches are low?



When we sing!

- Hand signs show us
- High and low pitches



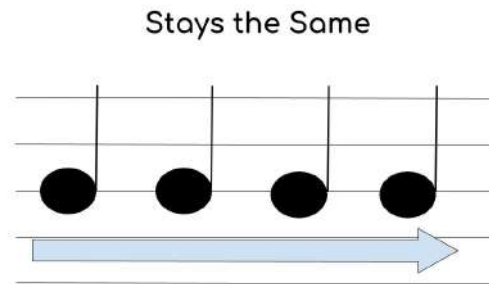
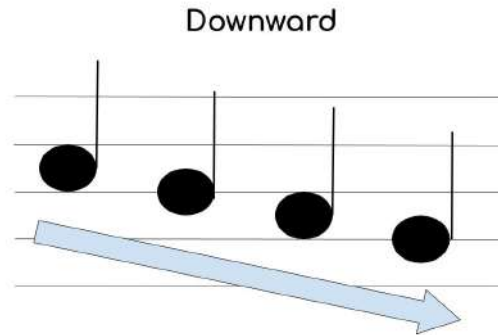
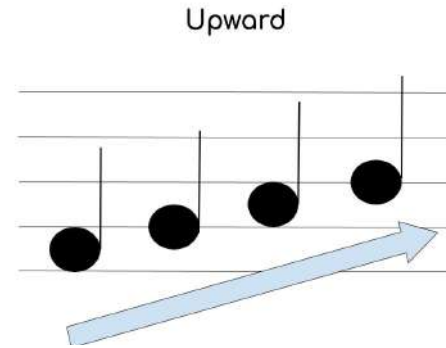
Melody is...

When you put pitches together in different combinations, they form melodies. Melody is the tune of a song. It is the part that gets stuck in your head!



Using Chrome Music Lab, make a melody that goes in upward, downward, or stays the same!

- Upward motion
- Downward motion
- Stays the same



Chrome Music Lab, melody maker

- <https://musiclab.chromeexperiments.com/melody-maker/>
- Try to keep the pitches closer together, going upward or downward, without BIG leaps between them. That way, your melody is something you can sing!

Listen and draw an imaginary line in the air, upward, downward, or the same, to indicate which direction the pitches are moving:

