

Jeopardy

Flower
Anatomy

Plant Processes
and Life Cycles

Major Groups
of Plants

Parts of
a Plant

Uses of Plants

\$100

\$100

\$100

\$100

\$100

\$200

\$200

\$200

\$200

\$200

\$300

\$300

\$300

\$300

\$300

\$400

\$400

\$400

\$400

\$400

\$500

\$500

\$500

\$500

\$500

Final Jeopardy

1 - \$100

- Attracts insects and birds for pollination

- Petals



1 - \$200

~~The male part of the flower~~

Stamen



1 - \$300

~~The female part of the flower~~

Pistil



1 - \$400

The outermost part of a flower (usually green)

sepals



1 - \$500

~~Flowers that have all the parts~~

Complete flowers



2 - \$100

The chemical process converting sunlight into energy and food for the plant

photosynthesis



2 - \$200

~~Plants that complete their life cycles in one year~~

Annuals



2 - \$300

Plants that complete their life cycle in two growing seasons

Biennials



2 - \$400

Plants that produce for more than two years or
growing seasons

Perennials



2 - \$500

The movement and loss of water through evaporation

Transpiration



3 - \$100

An embryonic leaf which become the seed leaf

Cotyledon



3 - \$200

Seeds have one cotyledon therefore the seedlings have one seed leaf

Monocots



3 - \$300

Seeds have two cotyledons therefore the seedlings have two seed leaves

dicots



3 - \$400

Plants that produce seeds not protected by fruit

Gymnosperms



3 - \$500

Plants that flower and produce seeds protected by fruit or pods

Angiosperms



4 - \$100

Produce food for the plant through photosynthesis

Leaves



4 - \$200

Absorbs water and minerals

Roots



4 - \$300

The purpose of this part is to reproduce through the production of seeds

Flower



4 - \$400

A mature (fertilized) ovary containing the seeds

Fruit



4 - \$500

The part of the stem that transports water and minerals from the roots up to the plant

Xylem



5 - \$100

The three basic human needs

Food, clothing, shelter



5 - \$200

The plant or plant products are used by humans

Direct source



5 - \$300

Humans use the animal and animal products that feed on plants and plant products

Indirect source



5 - \$400

The type of horticulture that provides aesthetics, comfort or beauty

Ornamental



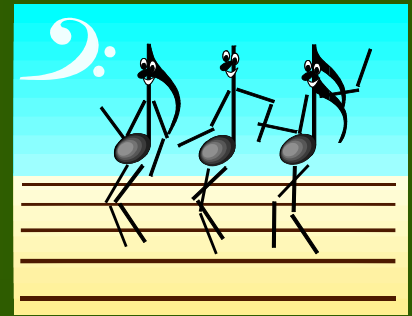
5 - \$500

Give an example of an indirect source of plants for human needs

Answers may vary.



Final Jeopardy



Two name system; Scientific names in Latin and printed in italics

Binomial nomenclature

