

# Jeopardy

FFA History

Places and  
Faces

FFA Emblem

Officer  
Stations

Everything  
Else!

\$100

\$100

\$100

\$100

\$100

\$200

\$200

\$200

\$200

\$200

\$300

\$300

\$300

\$300

\$300

\$400

\$400

\$400

\$400

\$400

\$500

\$500

\$500

\$500

\$500

Final Jeopardy

# 1 - \$100

- The Smith Hughes National Vocational Education act established agriculture classes

- 1917



1 - \$200

~~Girls were allowed to join~~

1969



1 - \$300

~~The Future Farmers of America was established~~

1928



1 - \$400

~~New Farmers of America merged with the Future  
Farmers of America~~

1965



# 1 - \$500

~~Public Law 81-740~~ granted the FFA a federal charter

1950



2 - \$100

~~Known as the "Father of FFA"~~

Henry Groseclose



2 - \$200

~~First FFA National President~~

Leslie Applegate





2 - \$300

Birthplace of the FFA and home to the national convention for 71 years

Kansas City, Missouri



2 - \$400

Where the national FFA headquarters was established on land formerly owned by George Washington

Alexandria, Virginia



2 - \$500

Site of the national convention after moving from  
Kansas City and is the current location through  
2016

Louisville, Kentucky



3 - \$100

Symbolizes labor and tillage of the soil

Plow



3 - \$200

Symbolizes freedom

Eagle



3 - \$300

Symbolizes wisdom and knowledge

Owl



3 - \$400

Symbolizes progress and promise

Rising sun



3 - \$500

Symbolizes unity and the foundation of American  
Agriculture

Ear of Corn





4 - \$100

~~The sentinel is stationed by the~~

Door



4 - \$200

~~The secretary is stationed by the~~

Ear of corn



4 - \$300

~~The advisor is stationed by the~~

Owl



4 - \$400

~~The reporter is stationed by the~~

American flag



4 - \$500

~~The president is stationed by the~~

Rising sun



5 - \$100

~~The degree that can be earned by middle school students only~~

Discovery Degree



# 5 - \$200

~~Learning to Do, Doing to Learn, Earning to Live,  
Living to Serve – what is this?~~

FFA Motto



5 - \$300

~~How should the official FFA jacket be worn  
(zipped)?~~

Zipped all the way to the top





5 - \$400

What type of membership is for former active members and other FFA supporters?

Alumni membership



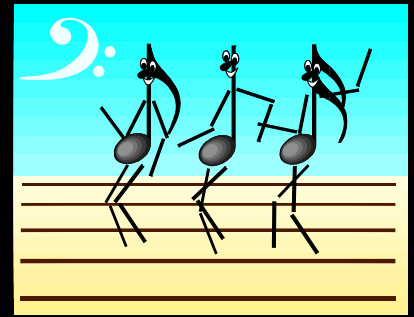
5 - \$500

~~What is the highest degree that can be earned in the FFA?~~

American Degree



# Final Jeopardy



Who wrote the FFA Creed?

E.M. Tiffany

