

# Jeopardy

FFA: What Is It	FFA Basics	FFA Emblem	Important Dates	Official Dress / Creed
\$100	\$100	\$100	\$100	\$100
\$200	\$200	\$200	\$200	\$200
\$300	\$300	\$300	\$300	\$300
\$400	\$400	\$400	\$400	\$400
\$500	\$500	\$500	\$500	\$500

Final Jeopardy

# 1 - \$100

- FFA is located in

- All 50 states, Puerto Rico, and the US Virgin Islands



# 1 - \$200

~~The number of FFA members across the nation~~

Over 500,000



1 - \$300

~~Grade levels that students are able to be active  
FFA members~~

Grades 6-12



1 - \$400

~~Three levels of FFA~~

Local, state, and national



# 1 - \$500

~~A local branch of an organization~~

Chapter



2 - \$100

~~TCMS FFA Membership Dues~~

\$15.00



2 - \$200

~~The official name of the FFA~~

National FFA Organization





2 - \$300

~~Official FFA Colors~~

National Blue and Corn Gold



# 2 - \$400

~~A visual representation of a group~~

Chapter



2 - \$500

~~Learning to Do, Doing to Learn, Earning to Live,  
Living to Serve~~

FFA Motto



3 - \$100

Symbolizes labor and tillage of the soil

Plow



3 - \$200

Symbolizes freedom

Eagle



3 - \$300

Symbolizes wisdom and knowledge

Owl



3 - \$400

Symbolizes progress and promise

Rising sun



3 - \$500

Symbolizes unity and the foundation of American  
Agriculture

Ear of Corn





4 - \$100

~~Future Farmers of America was established~~

1928



4 - \$200

~~Girls were allowed to join FFA~~

1969



4 - \$300

~~The New Farmers of America merged with the  
Future Farmers of America~~

1965



4 - \$400

~~The Future Farmers of America~~ is changed to the  
National FFA Organization

1988



4 - \$500

The official colors were adopted

1929



# 5 - \$100

A written statement of beliefs

Creed



5 - \$200

Two words that each paragraph of the creed  
begins with

I believe



5 - \$300

~~The year FFA official dress was adopted~~

1933





5 - \$400

~~The parts of female official dress~~

FFA Jacket, white blouse, black skirt, FFA scarf,  
black hosiery, black dress shoes



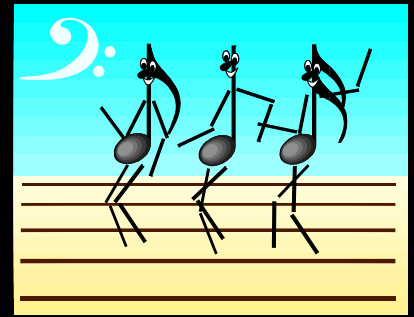
5 - \$500

~~How the FFA jacket should be worn~~

Zipped to the top



# Final Jeopardy



The year that the Smith-Hughes National Vocational Education Act was established

1917

