



Transforming K12 Education



Things are Going to Change

Public K12 education exists to serve its customer – society. As society changes so must K12 education. When America shifted from an agrarian to an industrial economy over a century ago its educational system was transformed into its current form – factory schools designed to create the workers and managers needed to power the industrial age.

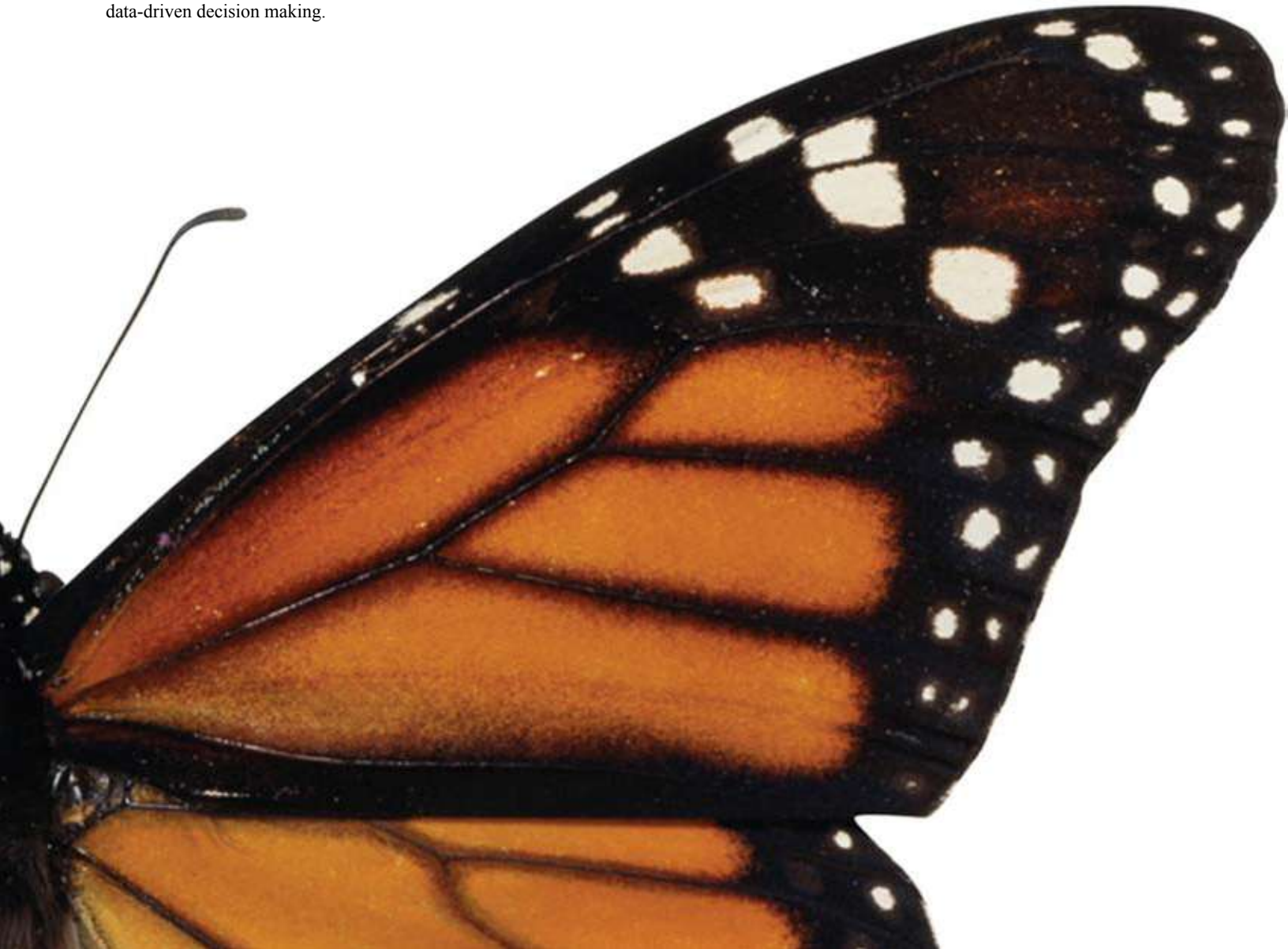


The Catalyst

The next shift in public K12 education will be how educators can adapt and apply information technology to transform education as it has changed other sectors of society. Infinite Campus is the catalyst educators can use to make this transformation.

District Tools for Transformation

Infinite Campus provides districts with the integrated tools needed to streamline student administration, enable stakeholder collaboration and individualize instruction. The entire system is web-based so educators, parents and students have access to information from anywhere at any time. An embedded district-wide data warehouse allows student data to be entered once and leveraged across the entire district for real-time data-driven decision making.



Everything You Need in One Product

Instruction

- Individual Learning Plans
- Special Education
- Lesson Planning
- Seating Charts
- Grade Book
- Assessment

Curriculum

- Standards Management
- Course Catalog
- Online Registration
- Graduation Planning
- Scheduling

Administration

- Census
- Enrollment
- Attendance
- Behavior
- Health

School Services

- Fee Management
- Locker Management
- Food Service

Communications

- Parent/Student Portal
- Email and Voice Messaging
- Mobile Device Support
- Form Letter Wizards
- User Notices


Reporting

- Standard Reports
- Ad Hoc Reporting
- SQL Reporting Services
- Integrated State Reporting
- NCLB Reporting

Analysis


- Data Warehousing
- Data Analysis

Streamline Educational Processes



Educators are spending an increasing amount of time performing administrative tasks – tasks that can be simplified or eliminated using technology. By streamlining time-consuming processes such as student enrollment, scheduling, attendance, and grading, more time and resources can be redirected toward planning and instruction.

Promote Stakeholder Collaboration




A daunting challenge facing public K12 education is the actual size of its audience – millions of teachers, tens of millions of students, and even more parents and guardians. Using information technology, this can be turned into a strength. Individual student performance will improve when teachers can interact with administrators, parents and other teachers. Enabling teachers to collaborate electronically, regardless of location, gives them the opportunity to share their knowledge and experience thereby improving the entire system.

State Tools for Transformation

States, regional consortia, and the federal government can take advantage of the breadth and integrity of the data being collected at the district level to populate their web-based statewide Infinite Campus data warehouse. With true vertical interoperability, Infinite Campus provides unique student ID assignment, district-to-district student record transfer, and real-time data analysis. And for districts using Infinite Campus, state reporting is no longer necessary because data is automatically transferred between the district and state instantly at the time of entry.

Individualize Education



The industrial age education model is focused on process and consistency – raw materials (students) are processed into a finite set of finished goods (graduates) using predefined processes. The information age model treats people as individuals – students follow their own path to a set of unique outcomes. This new model stresses individual growth over group averages. The key artifact of education in the information age is the individualized learning plan (ILP).

Ready? We are.

For over ten years, Infinite Campus has successfully implemented its comprehensive student data system for customers of all sizes. They benefit from streamlined educational processes and information transparently provided to multiple stakeholders while everyone remains focused on individual student achievement.

With a focus on the long term and a vision to help educators transform K12, Infinite Campus customers are assured that their investment can and will adapt to take advantage of new technologies as they become available, quickly meet the needs of any changes in state and federal policy, and be ready for the unforeseen.

To leverage this agility, Infinite Campus requires its customers to undergo a rigorous review of their current practices. This review will change the way things have always been done so Infinite Campus customers can establish the policies and procedures they will need to meet the demands of this new era.

Infinite Campus and its partners are experts at managing this transition. Using a proven rapid implementation methodology and professional services for project management, data conversion, and application hosting, our team delivers customized services to meet your specific needs to ensure that the implementation is ready on time and on budget.

Following implementation, training and support are there when you need it. From initial classroom sessions to ongoing training, Infinite Campus provides staff development throughout the school year timed when it's needed with a complete online library accessible any time. And when you need a knowledgeable person to resolve a technical issue, Infinite Campus and its partners are committed to answering your questions promptly and to your satisfaction.

Ready to transform your organization? We are. Learn more by contacting your Infinite Campus representative today.

"Our 2,000 teachers just couldn't believe how much easier it was to use and everyone latched on to the improved functionality."

Bailey Mitchell
Chief Technology and Information Officer
Forsyth County Schools

"Infinite Campus provided our staff with the information they needed on their desktops instead of requesting it and waiting for a reply from the main office."

Bryan McGuire
Technology Director
Sperry Oklahoma Independent School District

"Based on the features and capabilities of the Infinite Campus program, South Dakota was in a great position to apply to the US Department of Education as a growth model state."

Dr. Rick Melmer
Secretary of Education
South Dakota Department of Education

"With Infinite Campus our district will benefit from the latest technology available which will help us provide better communications to a wider audience, achieve efficiencies to let us spend more time focusing on our students, and simplify our state and federal reporting requirements."

Kurt Kiefer
Planning/Research and Evaluation
Madison Metropolitan School District

"With Infinite Campus we will be able to provide our teachers with the data they need about each student in their classroom. They can quickly understand each student's status and make instruction or curriculum changes needed to ensure each student is reaching their potential."

Debbie Amerman
Information Technology Manager
Central Bucks School District

"With Infinite Campus, we are certain that the data is accurate and we can evaluate the data in real time."

Craig Barnum
Director of Information Services
College Community School District

"From a state data professional's perspective, the system has been a lifesaver. Our two person department still has to perform the same federal reporting functions as any other state with more personnel and Infinite Campus has been the key to helping us do things other states are not capable of doing yet."

Melody Schopp
Director, Office of Accreditation and Teacher Quality
South Dakota Department of Education



 **Infinite Campus**

2 Pine Tree Drive | Arden Hills, MN 55112 | (800) 850-2335 | www.infinitecampus.com