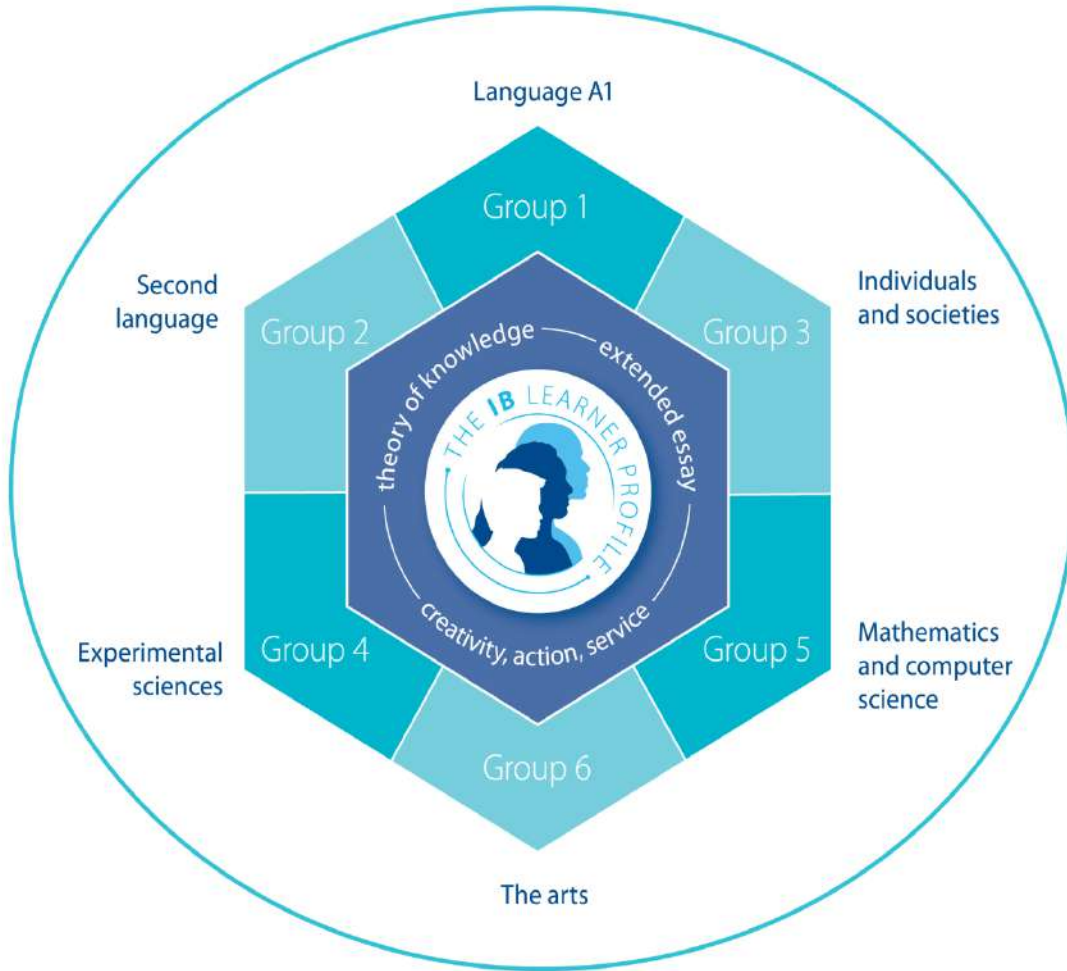




**Pedro Menendez**  
**International Baccalaureate**

# What Does the IB Program curriculum look like?



- **three subjects at higher level** : English, History, Spanish, Biology, Physics, Psychology, Art, Dance (240 hours each)
- **three subjects at standard level**: Spanish, Psychology, Math, Art, Dance (150 hours each).
- **three parts of the core**: TOK, EE, CAS

In addition to studying



**IB English**  
**IB Spanish**  
and  
**IB History**



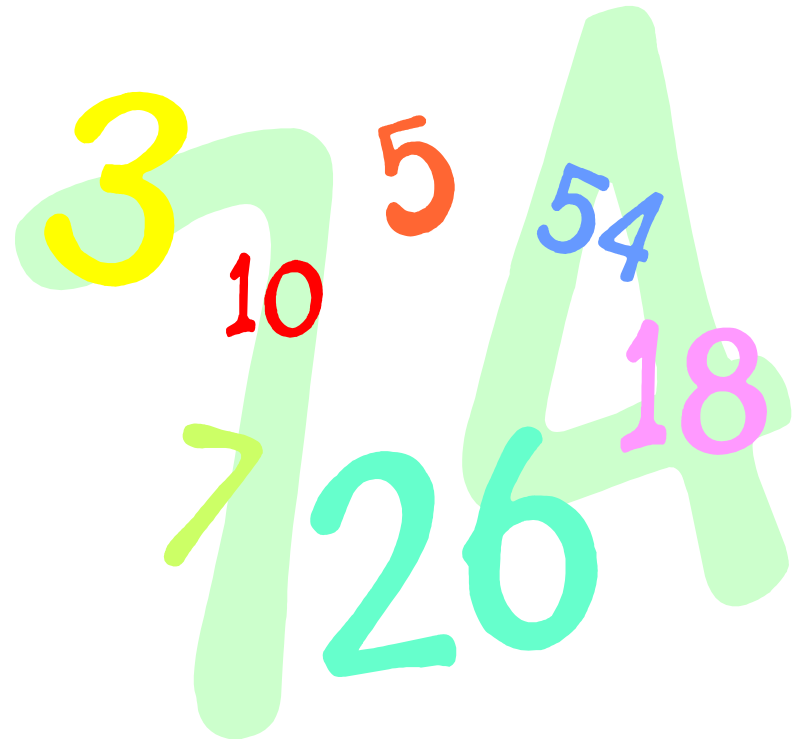
students at Menendez have choices in  
Math, Science and in their IB 6<sup>th</sup> area elective:

**In Math, students may choose to study:**

**Mathematical Studies  
(Statistics)**

or

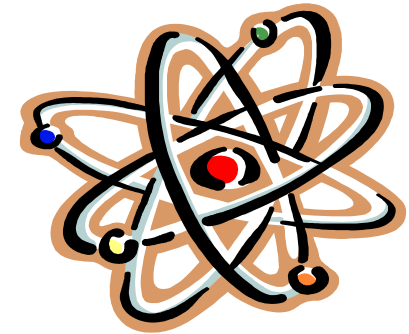
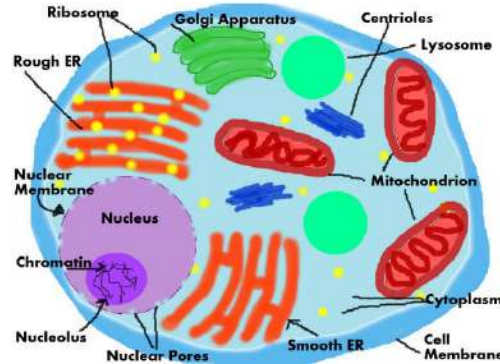
**Mathematics  
(Calculus)**



In Science, students may choose to study:

**Biology**

**Physics**



**Environmental  
Systems**

# Our IB students can “specialize” in:

**Art**

**Dance**



**OR**

**Psychology**



# The Core: #1

*There are three core requirements*

## The extended essay:

- 4,000 words
- Offers the opportunity to investigate a research question of individual interest
- Familiarises students with the independent research and writing skills expected at the university level



# The Core: #2

## **Creativity, action and service (CAS):**

- Encourages students to be involved in artistic pursuits, sports and community service
- Education outside the classroom
- Development of the learner profile





# The Core: #3

## Theory of knowledge: TOK

- Interdisciplinary
- Explores the nature of knowledge across disciplines
- Encouraging an appreciation of other cultural perspectives



Who is an  
**IB Student?**

# **An IB learner who strives to be:**

Inquirer

Knowledgeable

Thinker

Communicator

Principled

Open-minded

Caring

Risk-taker

Balanced

Reflective

# Why IB?



**Opportunity to earn college credit**



**Recognized by colleges as the most rigorous program available**

**Develops well-rounded students who can major in anything**

**Creates a sense of “academic family “**

# What does the research say about the impact IB has on college admission and enrollment?

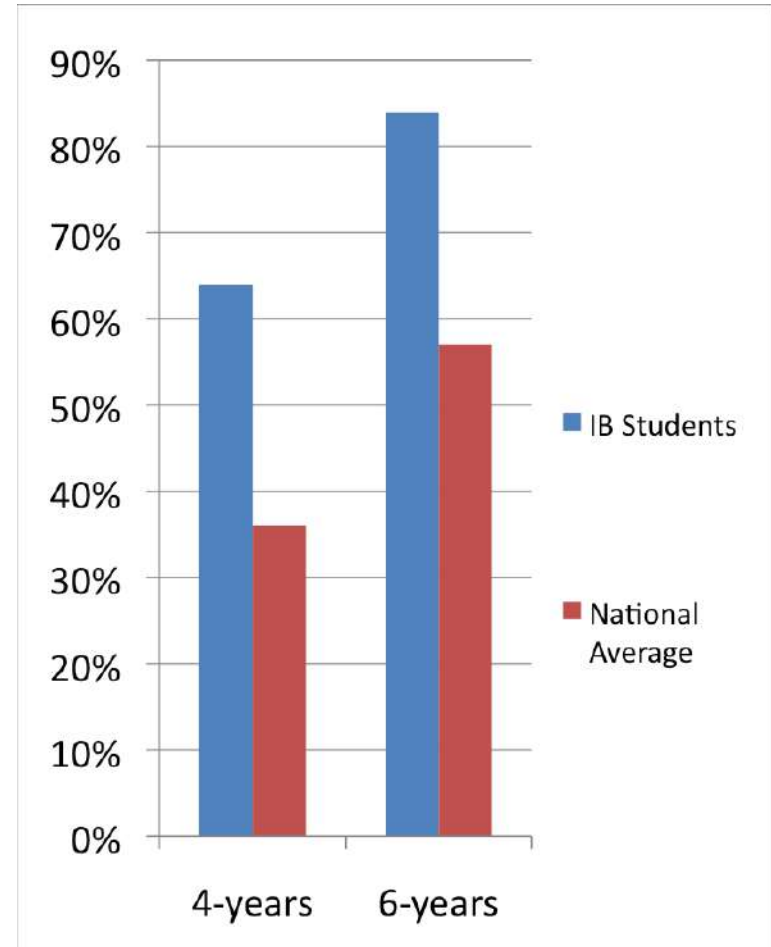


# Comparison of College Acceptance rates

University or college	IB students acceptance rate	Total population acceptance rate	IB students vs total population
University of Florida	82%	42%	+40%
Florida State University	92%	60%	+32%
Brown University	18%	9%	+9%
Stanford University	15%	7%	+8%
Columbia University	13%	9%	+4%
University of California - Berkeley	58%	26%	+32%
Harvard University	10%	7%	+3%
New York University	57%	30%	+27%
University of Michigan - Ann Arbor	71%	51%	+20%
University of Miami	72%	30%	+42%

# IB students graduate from college at higher rates at higher rates

The 2011 study of IB students' experiences after high school found that **IB students graduated from college at higher rates**, with 81% of IB students graduating within 6 years of enrolling full-time at a 4-year institution, compared to the national average of 57%.





# POSS ILITIES

.... give IB a try