



Delaware Summary of 2017-2018 Graduation and Dropout Data

June 20, 2019



Delaware
Department of Education



GRADUATION DATA



Delaware
Department of Education



Graduation Rates

- Graduation Rates are reported for all Delaware public schools that include grade 12.
- Cohort graduation rates are calculated as prescribed by the National Center for Educational Statistics (NCES), which provides data to the federal reporting system.
- In accordance with NCES requirements, Delaware reports a 4-year adjusted cohort graduation rate, a 5-year adjusted cohort graduation rate and a 6-year adjusted cohort graduation rate.



Adjusted Cohort Rates

- **Adjusted Graduation Cohort** - Defined as the number of first-time 9th graders followed for four, five, and six years plus students who transfer in minus students who transfer out, emigrate, incarcerated or are deceased during that time period.
- **Four-year Adjusted Cohort Graduation Rate** - Measures the number and percentage of cohort members who earned a regular high school diploma within four years or less.
- **Five-year Adjusted Cohort Graduation Rate** - Measures the number and percentage of cohort members who earned a regular high school diploma within four years or less.
- **Six-year Adjusted Cohort Graduation Rate** - Measures the number and percentage of cohort members who earned a regular high school diploma within four years or less.



Regular High School Diploma

As prescribed by NCES and under ESSA, the graduation rate is calculated by measuring the number and percentage of cohort members who earned a regular high school diploma within four years or less.

- A Regular High School Diploma is defined as the diploma awarded to students meeting the state required academic content standards, as prescribed in Delaware Regulations, Administrative Code, §505.
- Certificates of Performance, Certificates of Attendance, Diplomas of Alternate Achievement Standards, and GED Credentials are not considered a “regular high school diploma” in the calculation of the graduation rate.



Regular High School Diploma Requirements

Delaware Regulations, Administrative Code, §505

4.0 Credit Requirements Beginning with the Graduation Class of 2016 (Freshman Class of 2012-2013)

- A minimum of twenty four (24) credits in order to graduate including:
 - four (4) credits in English Language Arts,
 - four (4) credits in Mathematics,
 - three (3) credits in Science, three (3) credits in Social Studies,
 - two (2) credits in a World Language,
 - one (1) credit in Physical Education,
 - one half (1/2) credit in Health Education,
 - three (3) credits in a Career Pathway, and
 - three and one half (3 ½) credits in elective courses.

Each graduating school may also require students to earn additional credits



Four-Year Adjusted Cohort Graduation Rate

- *Numerator* – Number of 2018 cohort members who earned a regular high school diploma through the summer of 2018
- *Denominator* – Number of first-time 9th graders in the fall of 2014 (starting cohort) plus students who transferred in, minus students who transferred out, emigrated, or deceased during school years 2014–2015, 2015-2016, 2016–2017 and 2017-2018

Number of 2018 cohort members earning diploma through summer 2018

2014 1st time 9th graders + incoming students – exiting students within the
4-year cohort



Graduation Summary Statewide Data

- For the 2017-2018 school year:
 - 8,918 of the 10,287 students in the cohort graduated at the end of the school year with a regular high school diploma
 - Annual graduation rate for 2017-2018 school year is 86.69%
 - Slight increase from the previous year's rate of 85.75 %



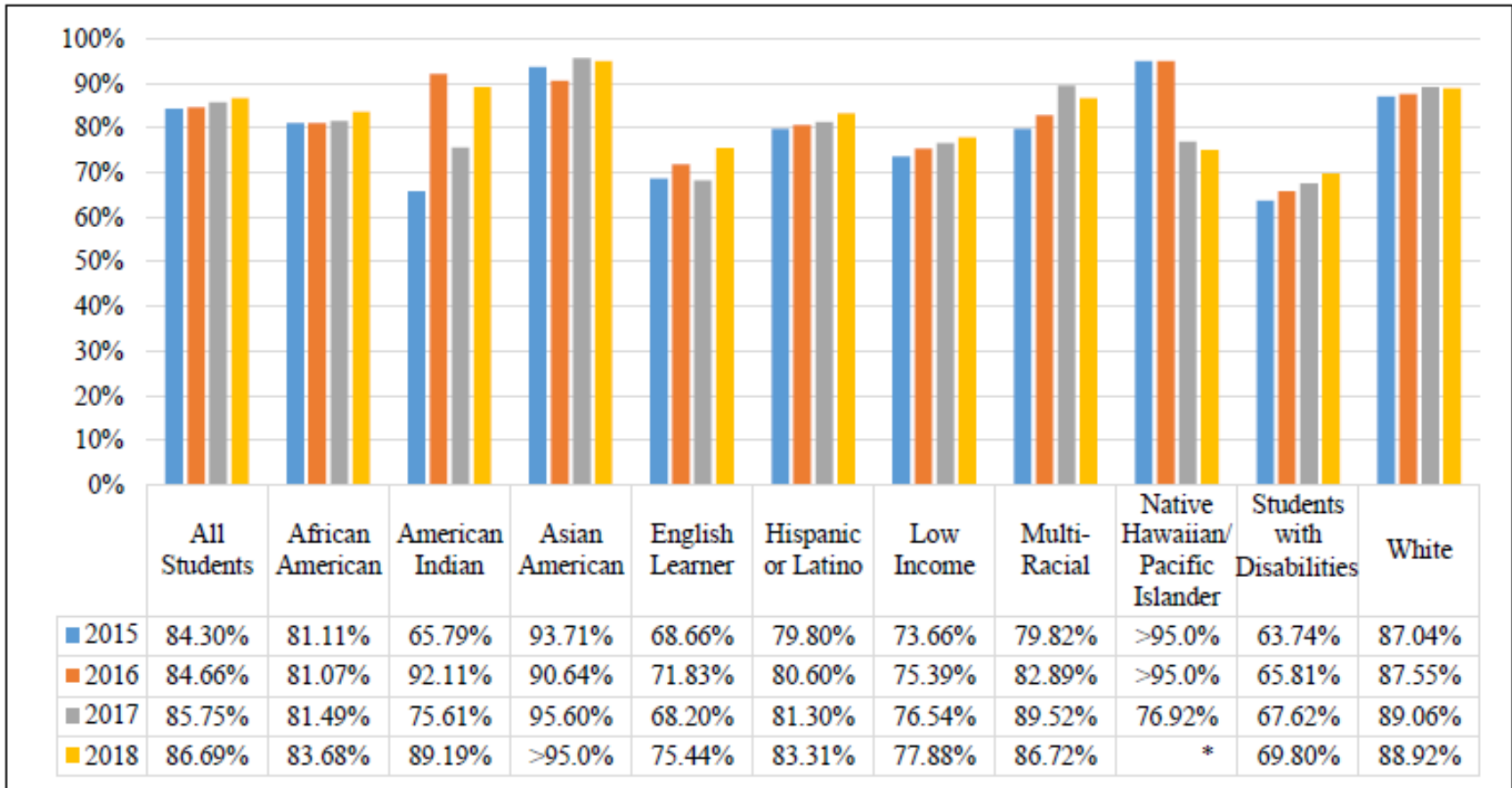
Class of 2018 Graduation Rates By Subgroup

Student Group	Students in Cohort	Graduates	Graduation Rate
All Students	10,287	8,918	86.69%
African American	3,284	2,748	83.68%
Asian American	*	383	>95.00%
English Learner	456	344	75.44%
Hispanic or Latino	1,432	1,193	83.31%
Low Income	2,740	2,134	77.88%
Multi-Racial	256	222	86.72%
Native American	37	33	89.19%
Native Hawaiian/Pacific Islander	16	<15	*
Students with Disabilities	1,447	1,010	69.80%
White	4,866	4,327	88.92%

**Information may be protected for student privacy.*



Four-Year Adjusted Graduation Rate Trend by Subgroup, 2015-2018

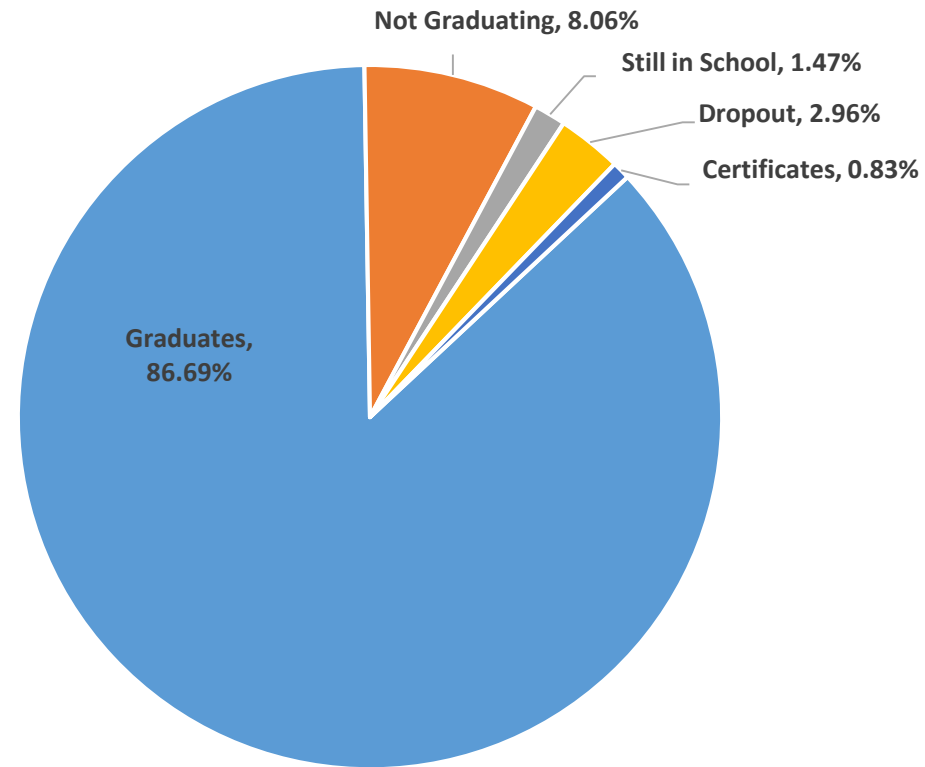


**Information may be protected for student privacy.*



Four-Year Adjusted Cohort Exit Status

Exit Status	Number of Students	Percent of Cohort
Graduates	8918	86.69%
Certificates	85	0.83%
Still in School	151	1.47%
Dropout	304	2.96%
Not Graduating	829	8.06%





Five-Year Adjusted Cohort Graduation Rate

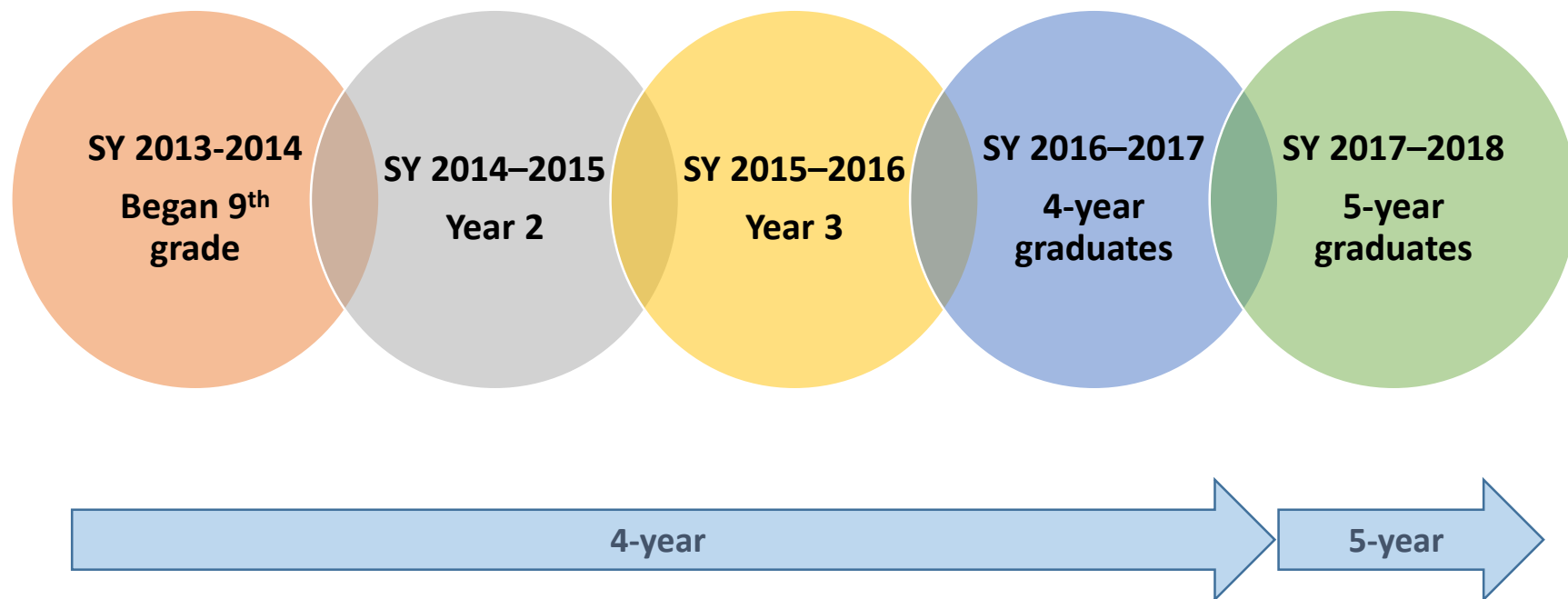
- *Numerator* – Number of 2017 cohort members who earned a regular high school diploma through the summer of 2017
- *Denominator* – Number of first-time 9th graders in the fall of 2013 (starting cohort) plus students who transferred in, minus students who transferred out, emigrated, or deceased during school years 2013-2014, 2014–2015, 2015-2016, and 2016–2017

Number of 2017 cohort members earning diploma through summer 2018

2013 1st time 9th graders + incoming students – exiting students within the 5-year cohort



Looking at a Five-Year Adjusted Cohort Graduation Rate





Five-Year Adjusted Cohort Graduation Rate

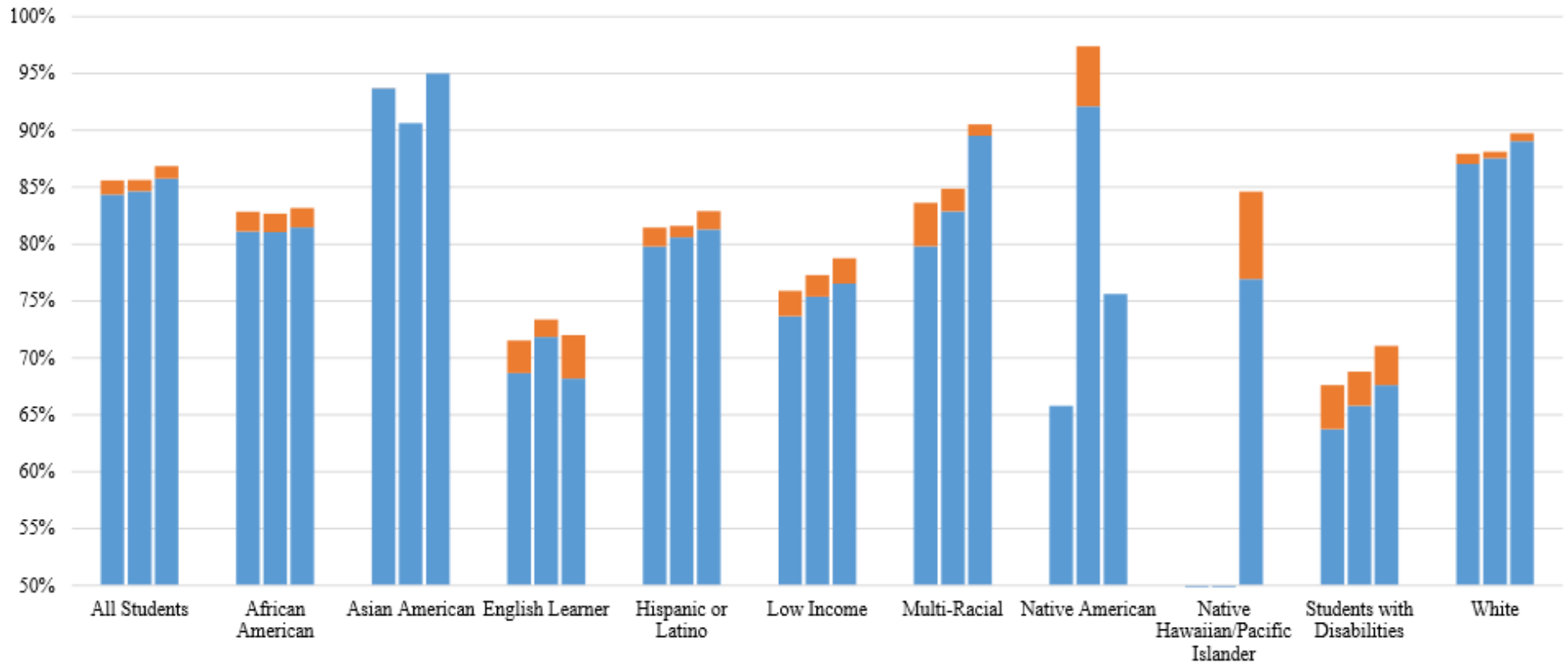
Student Group	Four-Year Graduates	Five-Year Graduates	Net Change in Graduates	Four-Year Graduation Rate	Five-Year Graduation Rate	Net Change in Graduation Rate
All Students	8,749	8,887	138	85.75%	86.86%	1.11%
African American	2,606	2,672	66	81.49%	83.16%	1.67%
Asian American	328	328	0	>95.00%	>95.00%	0.00%
English Learner	341	360	19	68.20%	72.00%	3.80%
Hispanic or Latino	1,174	1,199	25	81.30%	82.92%	1.62%
Low Income	2,163	2,421	258	76.54%	78.76%	2.22%
Multi-Racial	188	191	3	89.52%	90.52%	1.00%
Native American	31	31	0	75.61%	75.61%	0.00%
Native Hawaiian/Pacific Islander	<15	<15	*	76.92%	84.62%	7.70%
Students with Disabilities	996	1,054	58	67.62%	71.07%	3.45%
White	4,412	4,455	43	89.06%	89.75%	0.69%

**Information may be protected for student privacy.*



Five-Year Adjusted Graduation Rate Trend By Subgroup, 2015-2017

■ Four-Year Graduation Rate ■ Five-Year Graduation Rate



**Information may be protected for student privacy.*

Six-Year Adjusted Cohort Graduation Rate



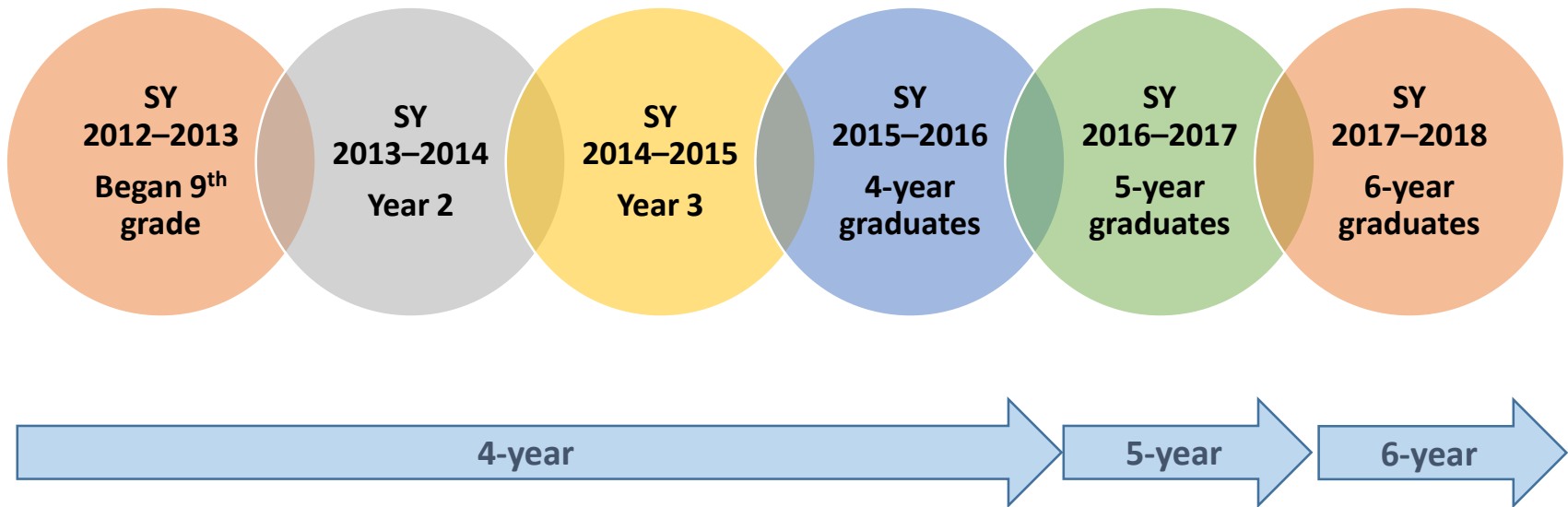
- *Numerator* – Number of 2016 cohort members who earned a regular high school diploma through the summer of 2018
- *Denominator* – Number of first-time 9th graders in the fall of 2012 (starting cohort) plus students who transferred in, minus students who transferred out, emigrated, or deceased during school years 2012-2013, 2013-2014, 2014–2015, and 2015-2016

Number of 2016 cohort members earning diploma through summer 2018

2012 1st time 9th graders + incoming students – exiting students within the
6-year cohort



Looking at a Six-Year Adjusted Cohort Graduation Rate





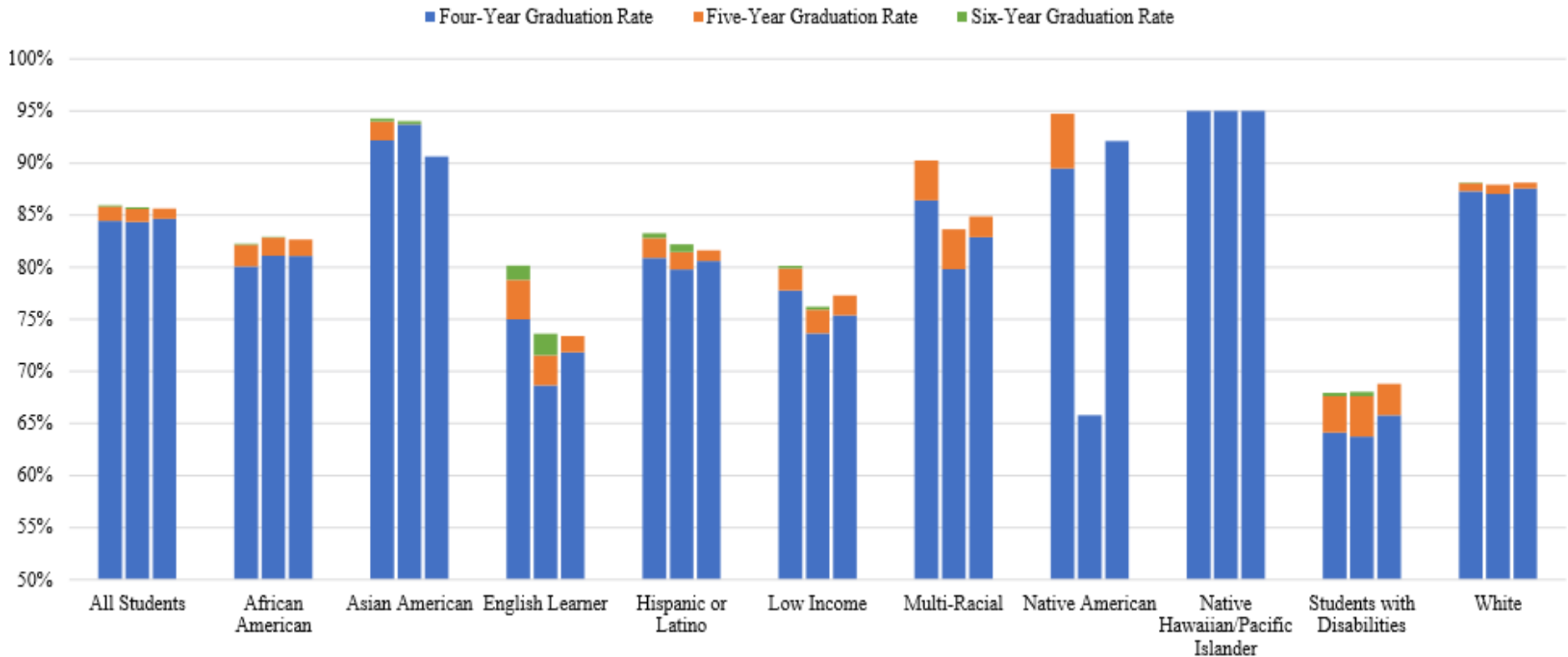
Six-Year Adjusted Cohort Graduation Rate

Student Group	Four-Year Graduates	Five-Year Graduates	Six-Year Graduates	Net Change in Grads Year 4 to 5	Net Change in Grads Year 5 to 6	Four-Year Graduation Rate	Five-Year Graduation Rate	Six-Year Graduation Rate
All Students	8,353	8,460	8,476	107	16	84.7%	85.6%	85.8%
African American	2,608	2,666	2,668	58	2	81.1%	82.7%	82.7%
Asian American	310	310	311	0	1	90.6%	90.6%	90.9%
English Learner	278	284	292	6	8	71.8%	73.4%	75.5%
Hispanic or Latino	972	985	994	13	9	80.6%	81.6%	82.4%
Low Income	2,282	2,343	2,352	61	9	75.4%	77.3%	77.6%
Multi-Racial	126	129	129	3	0	82.9%	84.9%	84.9%
Native American	35	37	37	2	0	92.1%	>95%	>95%
Native Hawaiian/Pacific Islander	<15	<15	<15	*	*	>95%	>95%	>95%
Students with Disabilities	924	968	974	44	6	65.8%	68.8%	69.2%

**Information may be protected for student privacy.*



Six-Year Adjusted Graduation Rate Trend By Subgroup, 2014-2016



**Information may be protected for student privacy.*



DROPOUT DATA



Delaware
Department of Education



Dropout Definition and Calculation

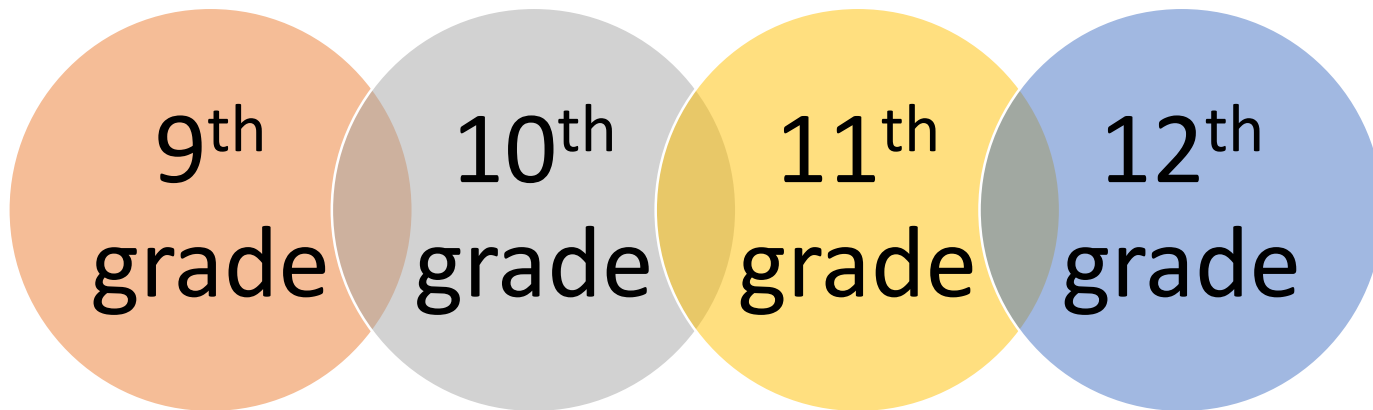
- Dropout rate:
 - Dropout rate is calculated for grades 9–12 as prescribed by the National Center for Educational Statistics (NCES)
 - Dropout rate is total number of students (grades 9–12) who dropped out in a single year, divided by the total enrollment of the same school year—this is reported as the event (annual) dropout rate

Number of dropout students in grades 9–12

Total enrollment of the same school year



Looking at Dropout Rate by School Year, 2017-2018



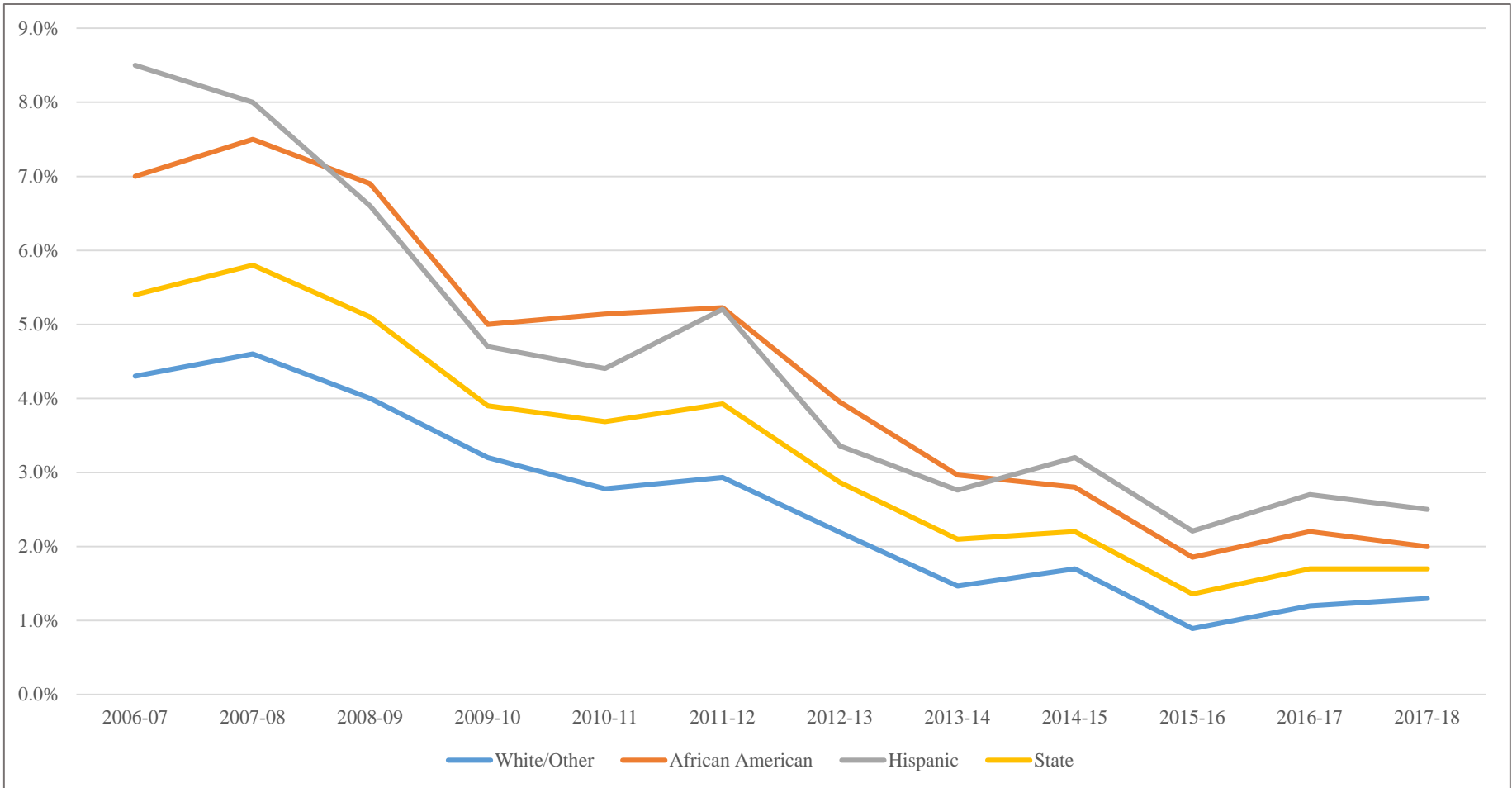


Dropout Summary Statewide Data

- For the 2017-2018 school year, grades 9–12:
 - 699 of the 41,593 students enrolled dropped out of school during the school year
 - Annual dropout rate for 2017-2018 is 1.68%
 - Slight decrease from the previous year's rate of 1.71%



Dropout Rate by Race/Ethnicity





Dropout Summary

By Gender and Race/Ethnicity

Delaware Dropouts, Dropout Rates and Student Enrollments
Gender by Race (Grades 9–12)

Gender	Number of Enrolled Students				Number of Dropouts/Rate			
	African American	Hispanic	White/ Other	All	African American	Hispanic	White/ Other	All
Male	6,640	3,303	11,632	21,305	114 (2.2%)	111 (3.4%)	176 (1.5%)	432 (2.0%)
Female	6,498	3,165	10,625	20,228	113 (1.7%)	48 (1.5%)	106 (1.0%)	267 (1.3%)
Total	13,138	6,468	21,987	41,593	258 (2.0%)	159 (2.5%)	282 (1.3%)	669 (1.7%)



Dropout Summary By Grade and County

Delaware Dropouts, Dropout Rates and Student Enrollments By Grade and County

	Number of Enrolled Students					Number of Dropouts/Rate				
	9 th	10 th	11 th	12 th	ALL	9 th	10 th	11 th	12 th	ALL
New Castle	6,795	5,812	5,486	5,414	23,507	102 (1.5%)	103 (1.8%)	83 (1.5%)	66 (1.2%)	354 (1.5%)
Kent	2,488	2,181	1,905	1,936	8,510	37 (1.5%)	47 (2.2%)	31 (1.6%)	22 (1.1%)	137 (1.6%)
Sussex	2,634	2,563	2,349	2,030	9,576	69 (2.6%)	65 (2.5%)	46 (2.0%)	28 (1.4%)	208 (2.2%)
Total	11,917	10,556	9,740	9,380	41,593	208 (1.7%)	215 (2.0%)	160 (1.6%)	116 (1.2%)	669 (1.7%)



Dropout Prevention Programs/Services

- Student services
 - Visiting teachers conduct home visits after repeated absences
 - Twilight credit recovery programs
 - Summer credit recovery programs
 - Behavior intervention initiatives
 - Student advisory programs
- Teacher professional learning
 - Improve the skill sets of teachers to support diverse populations (e.g., compassionate schools)
- Families
 - Workshops for parents
 - Parent outreach programs (e.g., parent university)