

Need More Detail?

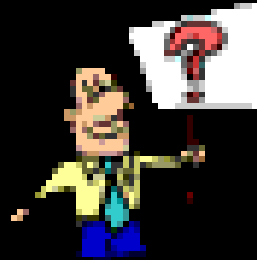
Download Google Earth Free



UNIT 2

Georgia Geography and the Prehistoric Period

UNIT 2 ESSENTIAL QUESTION:

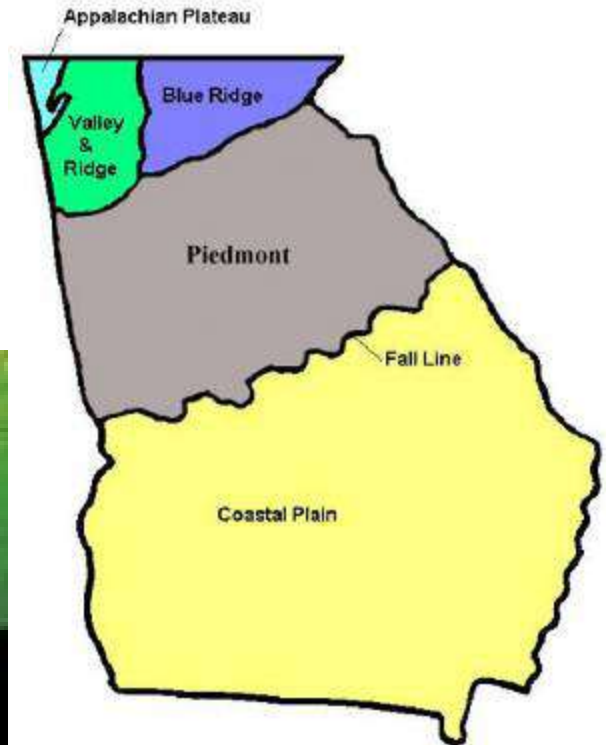
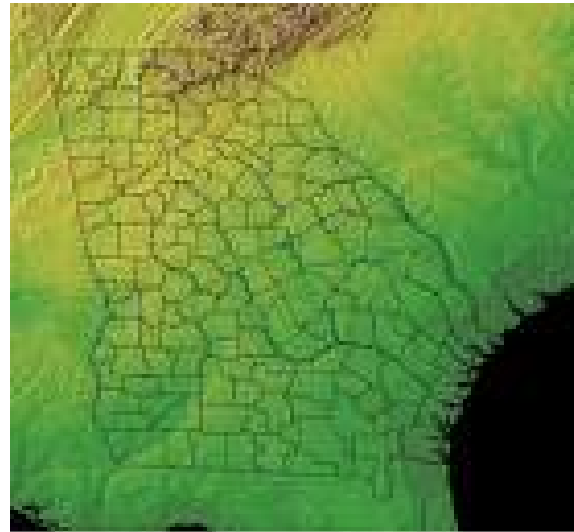


- **How can I describe Georgia with regard to physical features and location?**

UNIT 2

GEOGRAPHY of GEORGIA

- LOCATION
- GEOGRAPHIC REGIONS
- PHYSICAL FEATURES



SS8G1a

**Locate Georgia in relation
to region, nation,
continent, and
hemispheres.**

Concept:
LOCATION



LOCATION



The student will understand that **location** affects a society's economy, culture, and development.

Why are different places in the world very different from one another?



LOCATION OF GEORGIA

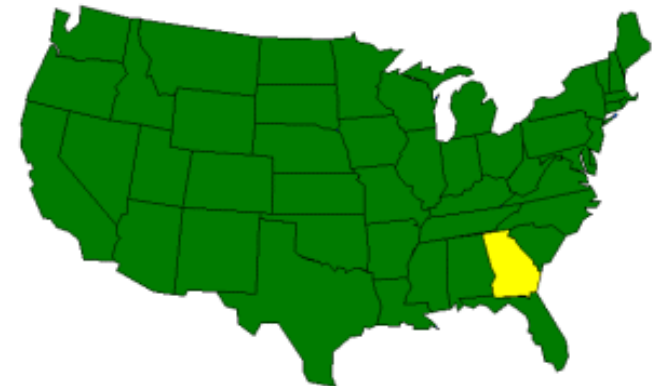
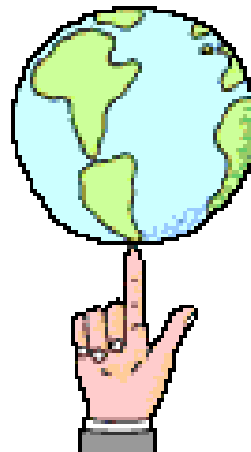
Essential Question #1:



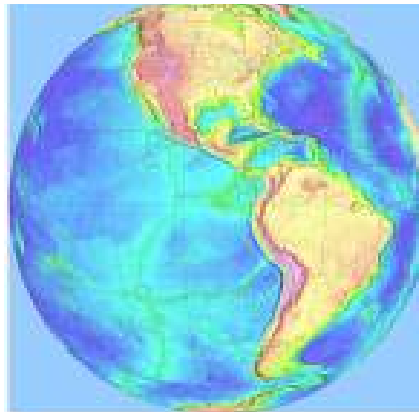
- Where in the world is Georgia?

Where in the World is Georgia?

- Which hemispheres?
- Which continent?
- Which nation?
- Which region?



Georgia is in the Northern & Western hemispheres



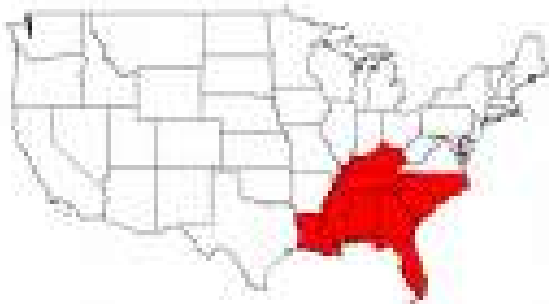
Georgia is on the
North American continent



Georgia is in the United States of America



Georgia is in the Southeast region of the USA





SS8G1b

Describe the five geographic regions of Georgia; include the Blue Ridge Mountains, Valley and Ridge, Appalachian Plateau, Piedmont, and Coastal Plain.

Concept:
LOCATION



GEOGRAPHIC REGIONS OF GEORGIA

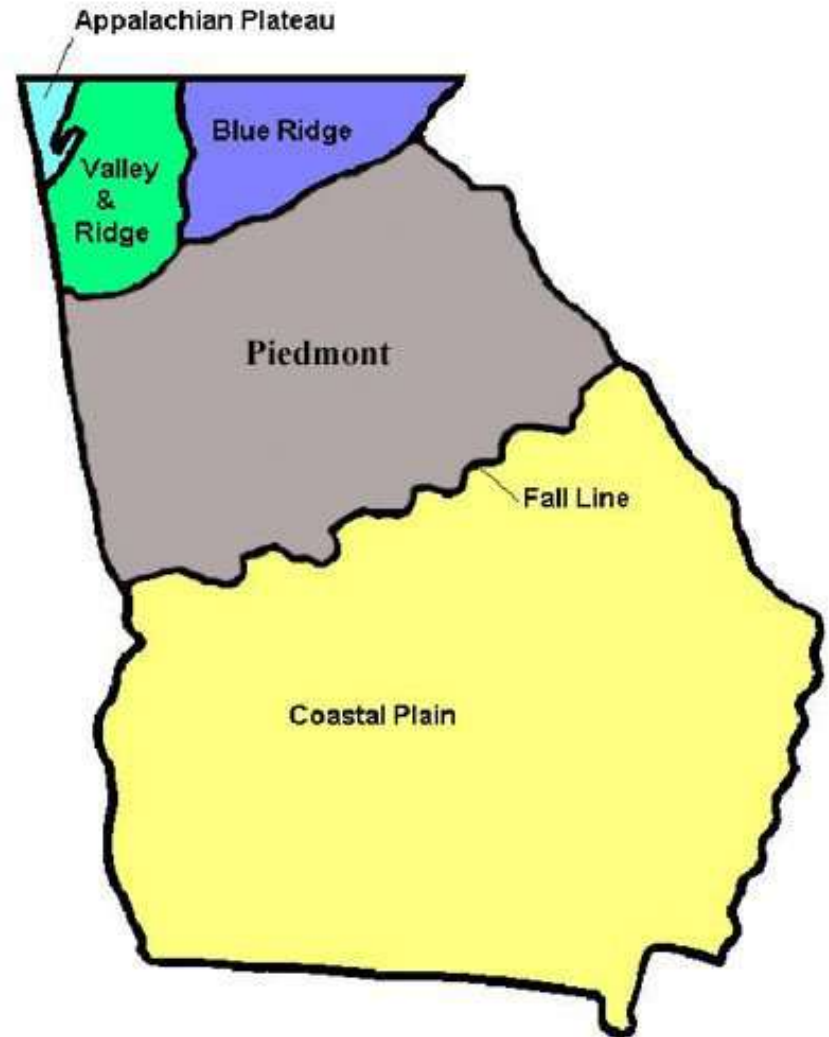


Essential Question #2:

- Where are the five regions of Georgia, and how are they similar and different?

What are the five geographic regions of Georgia?

- Appalachian Plateau
- Valley and Ridge
- Blue Ridge Mountains
- Piedmont
- Coastal Plains





APPALACHIAN PLATEAU

Descriptions:

- Georgia's smallest region located in the northwest corner of the state
- Part of the Appalachian Mountains

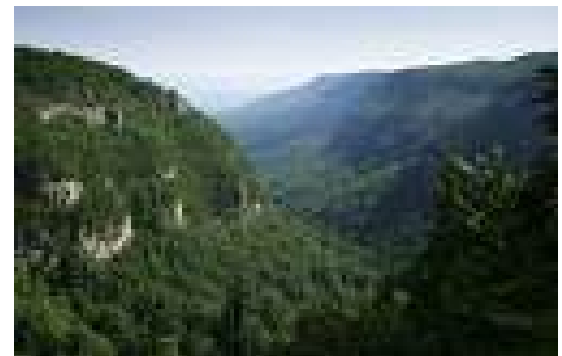




APPALACHIAN PLATEAU

Descriptions:

- Site of Lookout Mountain and Cloudland Canyon
- Contains Georgia's only coal deposits





VALLEY and RIDGE

Description:

- Located in northwest region of the state between Appalachian Plateau and Blue Ridge Mountains
- Site of Chickamauga Valley and some Civil War battles



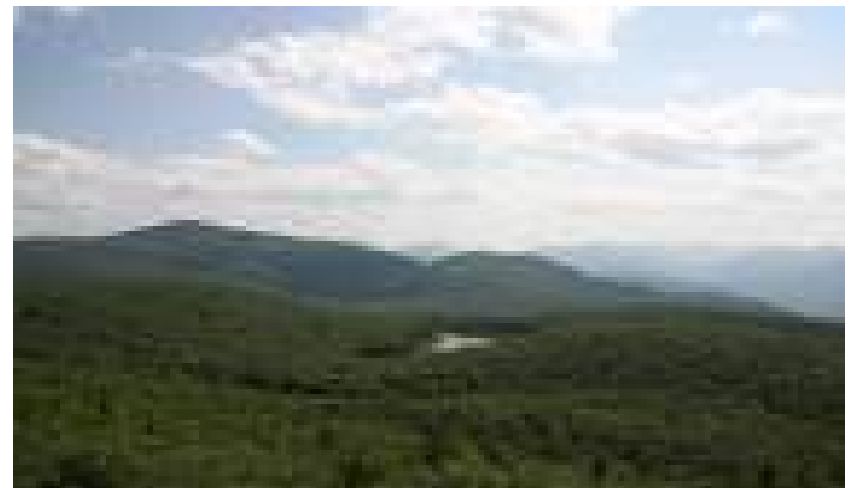


VALLEY and RIDGE



Description:

- Valleys are fertile for farming
- Lots of hardwood and evergreen forests





BLUE RIDGE MOUNTAINS

Description:

- Located in northeast corner of Georgia
- Also part of the Appalachian Mountains
- Site of Brasstown Bald – GA's largest peak at 4,784 feet

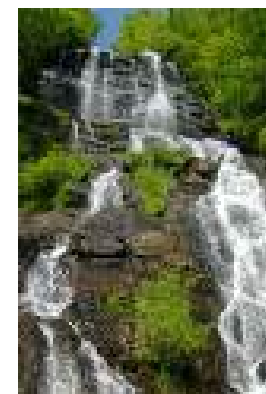
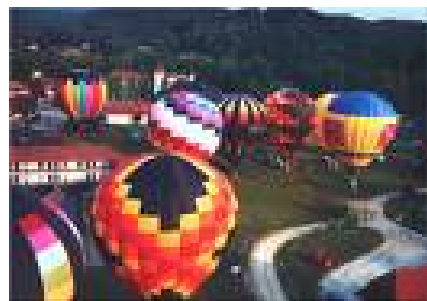




BLUE RIDGE MOUNTAINS

Description:

- Marble mineral resource makes Georgia famous
- Corn & apples grown
- A lot of precipitation due to high elevation – source of Savannah & Chattahoochee Rivers
- 1st Gold rush in America





PIEDMONT

Description:

- 2nd largest region making up 1/3 of the land
- Most populated region of Georgia
- Rolling hills & farmland
- Cotton production





PIEDMONT

Description:

- Site of Stone Mountain and Atlanta
- Granite and kaolin mineral resources
- Bordered to the south by the Fall Line





COASTAL PLAINS

Description:

- Once the bottom of the ocean floor – sandy soil in south, fertile soil in north
- Flat landscape / navigable rivers
- Saltwater wetlands along coast
- Makes up 60% of the state





COASTAL PLAINS



Description:

- Site of Okefenokee Swamp & Barrier Islands
- Bordered by the Fall Line to the north
- Crops include peanuts, onions, & tobacco
- Sparsely populated





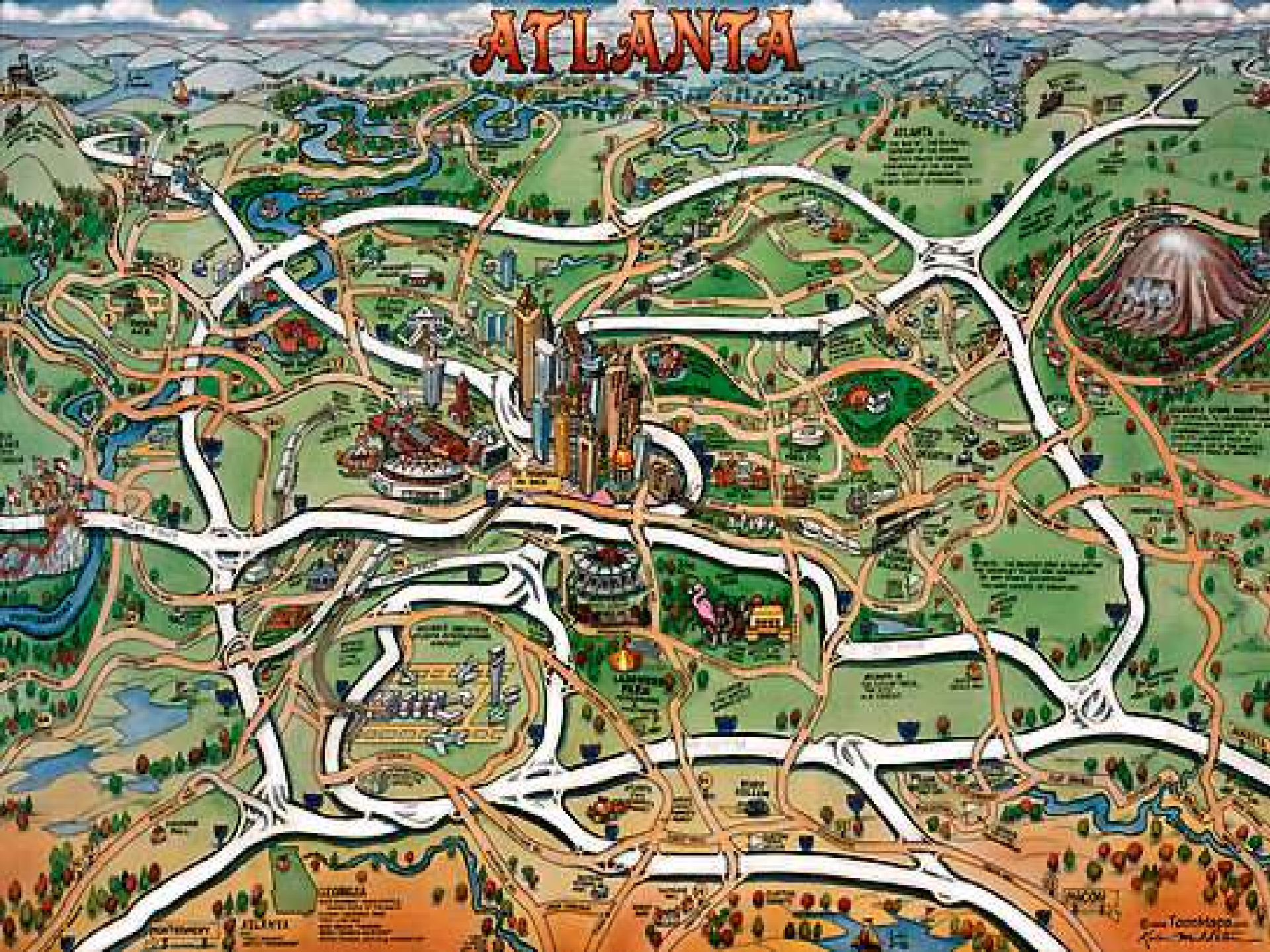
Look at the map key.

Which color represents the high elevation of mountains?

Which part of the state is highest in elevation?

What direction do many of the rivers flow?

ATLANTA



ATLANTA
The heart of the South
is here. The city of
the future is here.
The city of the past is
here. The city of the
present is here.

Atlanta is the heart
of the South. It is the
city of the future. It
is the city of the past.
It is the city of the
present.

Atlanta is the heart
of the South. It is the
city of the future. It
is the city of the past.
It is the city of the
present.

Atlanta

Atlanta

Atlanta
Georgia
Atlanta
Georgia
Atlanta
Georgia

Tom Hays
Atlanta

SS8G1c

Locate and evaluate the importance of key physical features on the development of Georgia; include the Fall Line, Okefenokee Swamp, Appalachian Mountains, Chattahoochee and Savannah Rivers, and barrier islands.

Concept:
LOCATION



PHYSICAL FEATURES OF GEORGIA

Essential Question #3:



- Where in the state of Georgia are you able to find the Fall Line, Okefenokee swamp, Appalachian Mountains, Chattahoochee and Savannah Rivers, and the barrier islands?

**Appalachian
Mtns**

**What are some of the
physical features of
Georgia?**

Fall Line

**Savannah
River**

**Chattahoochee
River**

**Okefenokee
Swamp**

Barrier Islands



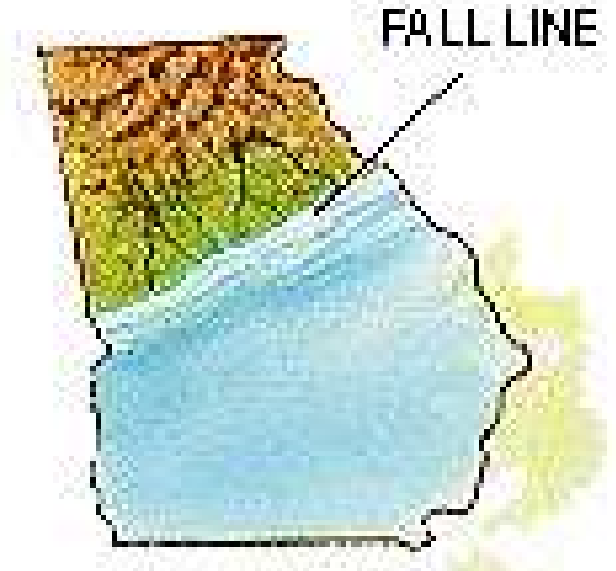
What and here is the FALL LINE?

- Natural boundary that separates the Piedmont and Coastal Plains regions



What and where is the FALL LINE?

- Zone several miles wide marking prehistoric ocean shoreline
- Augusta, Macon, & Columbus were built along Fall Line



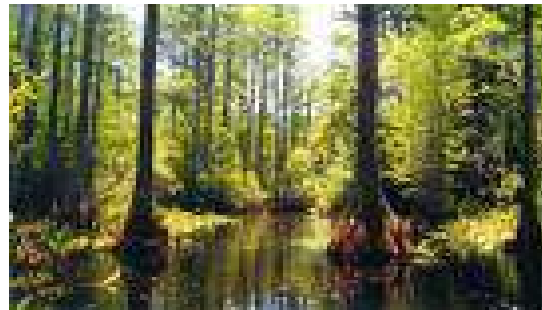
What and where is the OKEFENOKEE SWAMP?

- Georgia's largest freshwater wetland



What and where is the OKEFENOKEE SWAMP?

- Rich ecosystem with over 1,100 species of plants and animals
- Okefenokee comes from the Seminoles meaning, "Land of Trembling Earth"



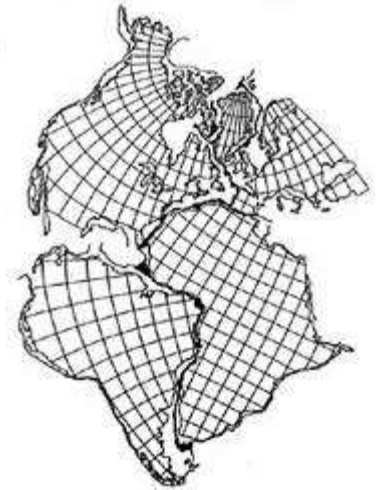
What and where are the APPALACHIAN MOUNTAINS?

- Located in the northern three regions of Georgia (Appalachian Plateau, Ridge & Valley, and Blue Ridge Mountains)
- Are the oldest mountains in North America



What and where are the APPALACHIAN MOUNTAINS?

- Receives the most precipitation in the state due to higher elevations
- Starting point of many of Georgia's rivers
- Site of famous Appalachian Trail



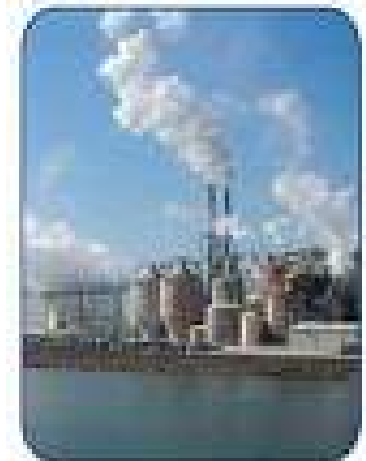
What and where is the CHATTAHOOCHEE RIVER?

- Forms a boundary line between Georgia and Alabama
- Starts in the Blue Ridge region and flows into the Gulf of Mexico



What and where is the CHATTAHOOCHEE RIVER?

- Water is used for farming, business, and drinking supply



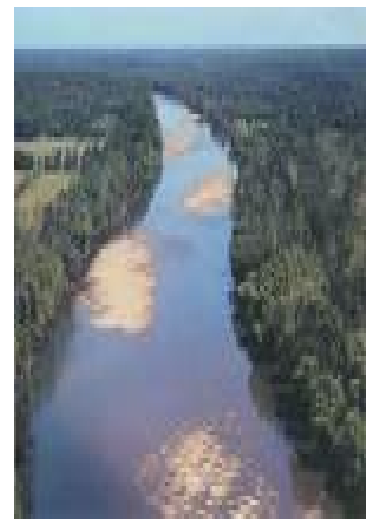
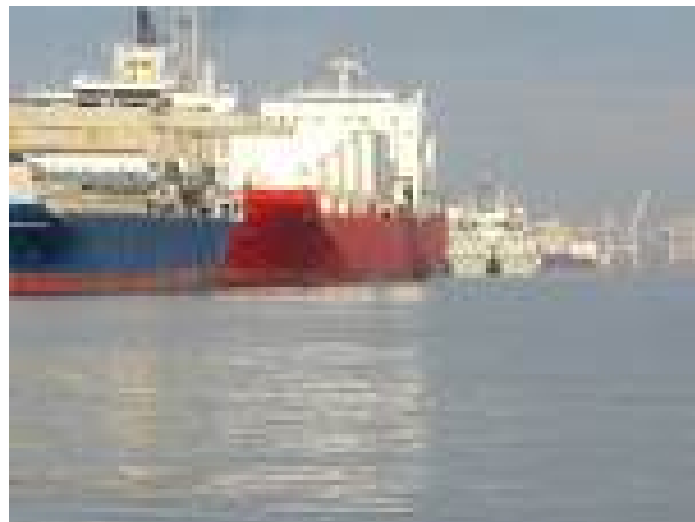
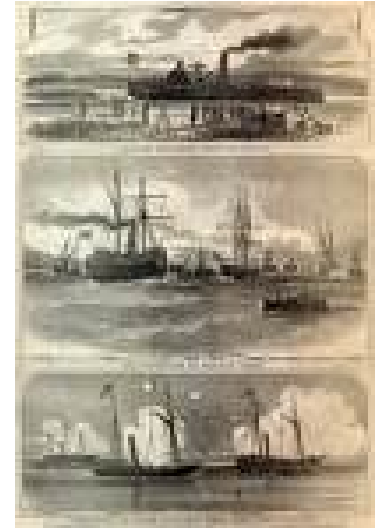
What and where is the SAVANNAH RIVER?

- Forms a boundary between Georgia and South Carolina
- Starts in the Appalachian Mtns and flows into the Atlantic Ocean



What and where is the SAVANNAH RIVER?

- Generates hydroelectric power
- Navigable for shipping





What and where are the **BARRIER ISLANDS?**

- Site of Jekyll, Cumberland, Tybee, St. Simons, and many other islands
- Freshwater rivers meet the salt water of the ocean at estuaries





What and where are the **BARRIER ISLANDS?**

- Saltwater wetlands along coast are vital to the food chain
- Provide protection from storms & waves
- Site of Atlantic Intracoastal Waterway

