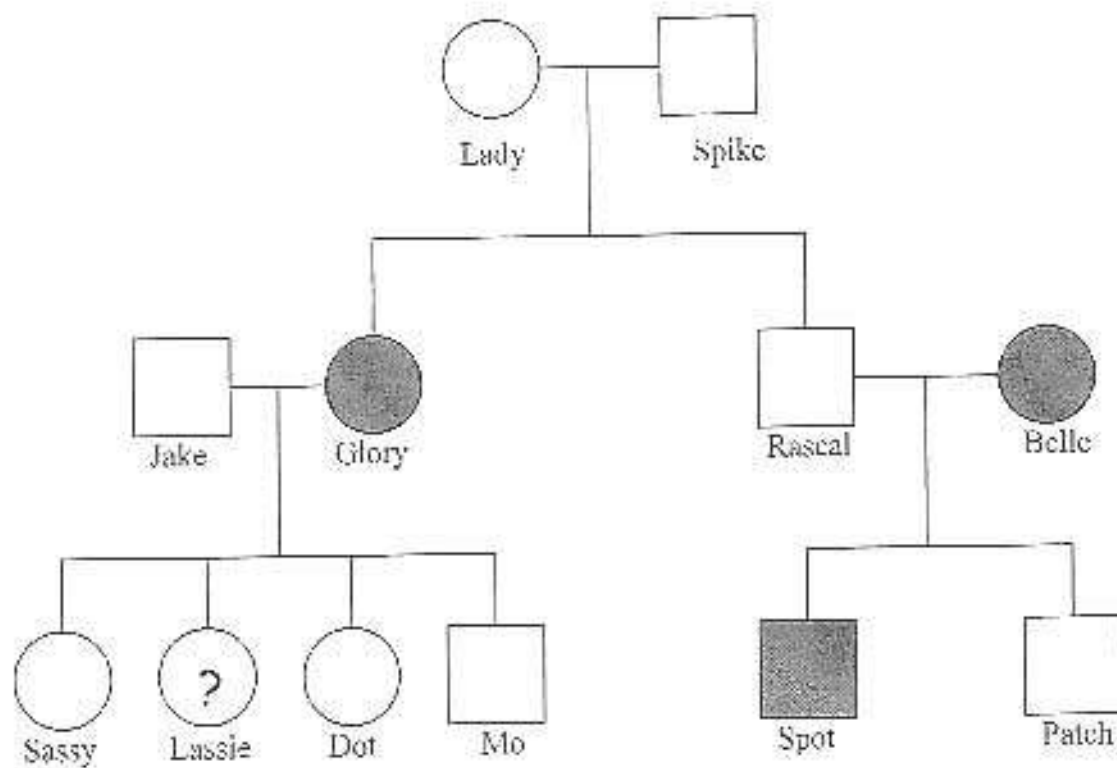


Genetics Summative Assessment
7th Grade

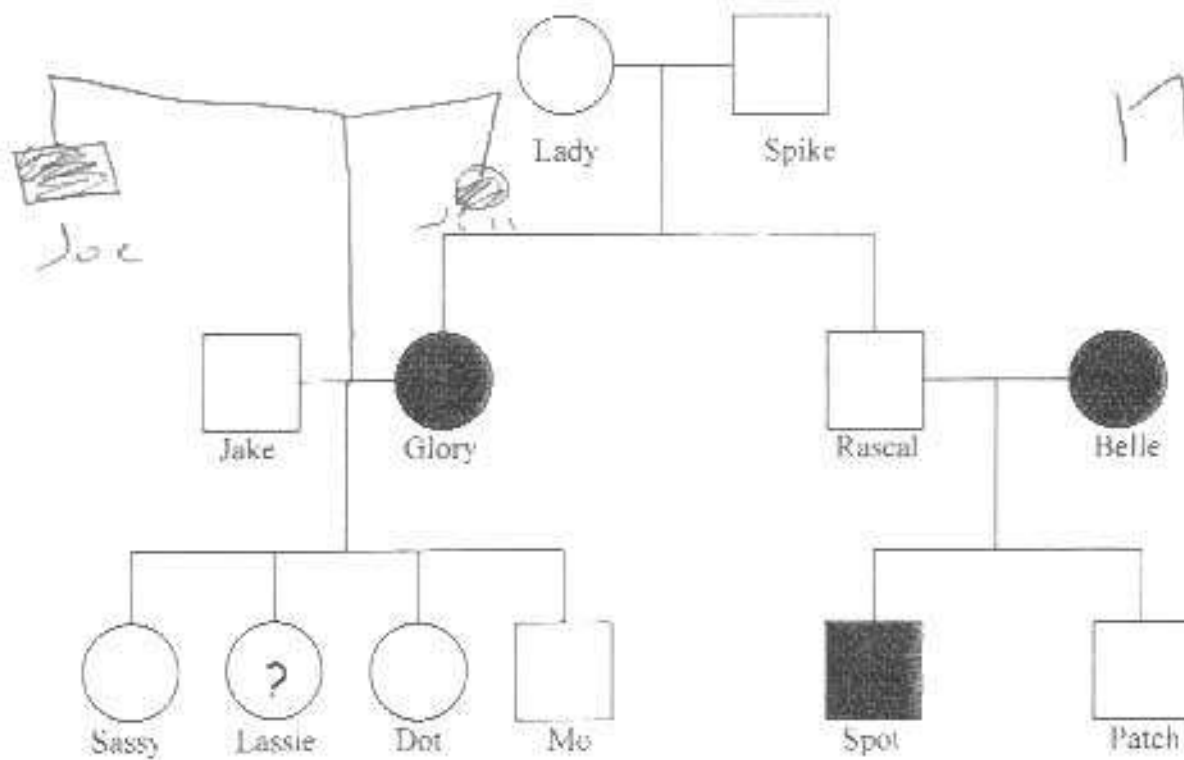


1. This pedigree shows a family of fictional organisms that have either plain or spotted noses. Glory, Belle and Spot have spotted noses. Use this pedigree to answer the following questions.

a.) Are spotted noses the result of a dominant or recessive gene? How do you know?

The spotted noses are the result of a recessive gene because the recessive gene is a gene that can be hidden as you can see with Lady & Spike. The hidden gene came back for Glory.

Genetics Summative Assessment
7th Grade

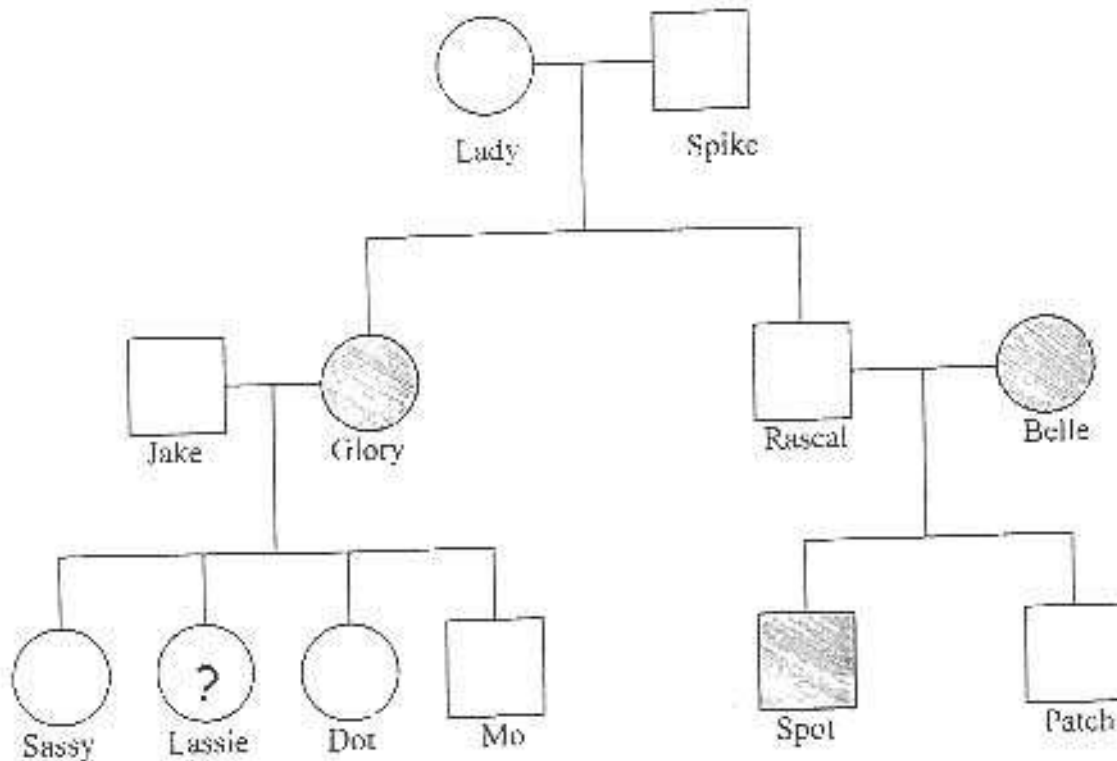


1. This pedigree shows a family of fictional organisms that have either plain or spotted noses. Glory, Belle and Spot have spotted noses. Use this pedigree to answer the following questions.

a.) Are spotted noses the result of a dominant or recessive gene? How do you know?

It looks like more of a recessive gene than a dominant because only 3 people in the family show the trait. All the others could be carriers. ~~are just more the recessive~~

Genetics Summative Assessment
7th Grade



1. This pedigree shows a family of fictional organisms that have either plain or spotted noses. Glory, Belle and Spot have spotted noses. Use this pedigree to answer the following questions.

a.) Are spotted noses the result of a dominant or recessive gene? How do you know?

Spotted noses are the result of a recessive trait. This is a recessive trait because it doesn't appear very often, so the regular nose must overpower spotted noses.