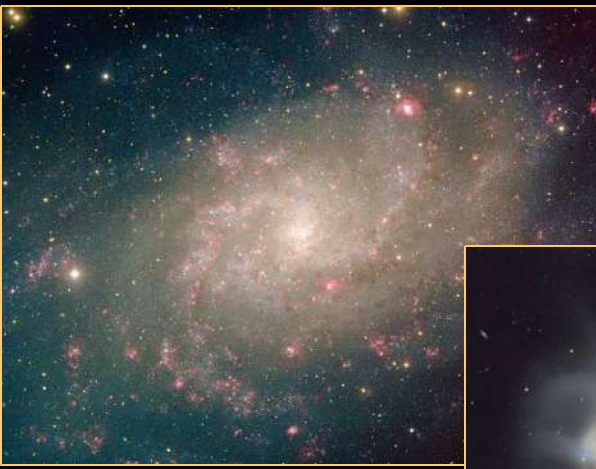


# Galaxies

# What is a galaxy?

- A galaxy is a large grouping of stars, gas, and dust in space that is held together by gravity.
- The largest galaxies contain more than a trillion stars. Smaller galaxies may have only a few million.
- Scientists estimate the number of stars from the size and brightness of the galaxy.

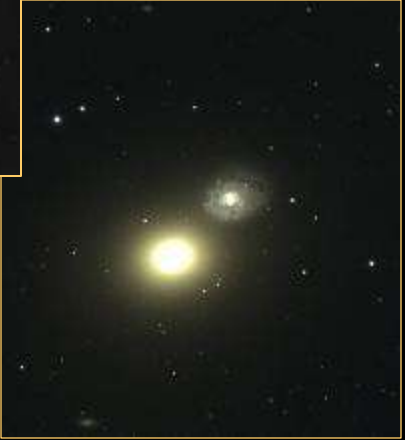
# Main Types of Galaxies



Spiral



Elliptical



Irregular



# Properties of Spiral Galaxies

- Shaped like flattened disks with one or more spiral arms.



- Our galaxy, Milky Way, is a spiral galaxy.
- Our solar system is located in one of the spiral arms.

# Properties of Elliptical Galaxies

- About 1/3 of all galaxies.
- Simply massive blobs of stars.



- Round or elliptical in shape.
- Contain very little gas or dust.
- Because of little gas, no new stars are forming.
- The largest and smallest galaxies are elliptical galaxies.

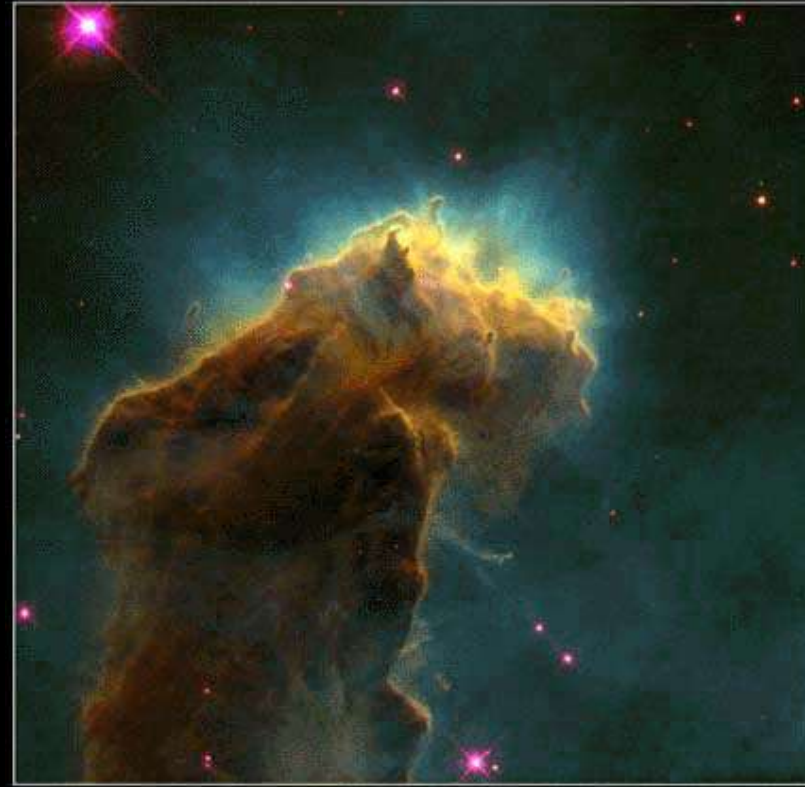
# Properties of Irregular Galaxies

- Do not fit into any other category.
- Chaotic mix of stars, gas and dust
- Usually found near large spiral galaxies who may be distorting their shape.



# Contents of Galaxies

Galaxies are made of stars, planetary systems, gas clouds, and star clusters. A nebula is a giant cloud of gas and dust where stars may be forming.



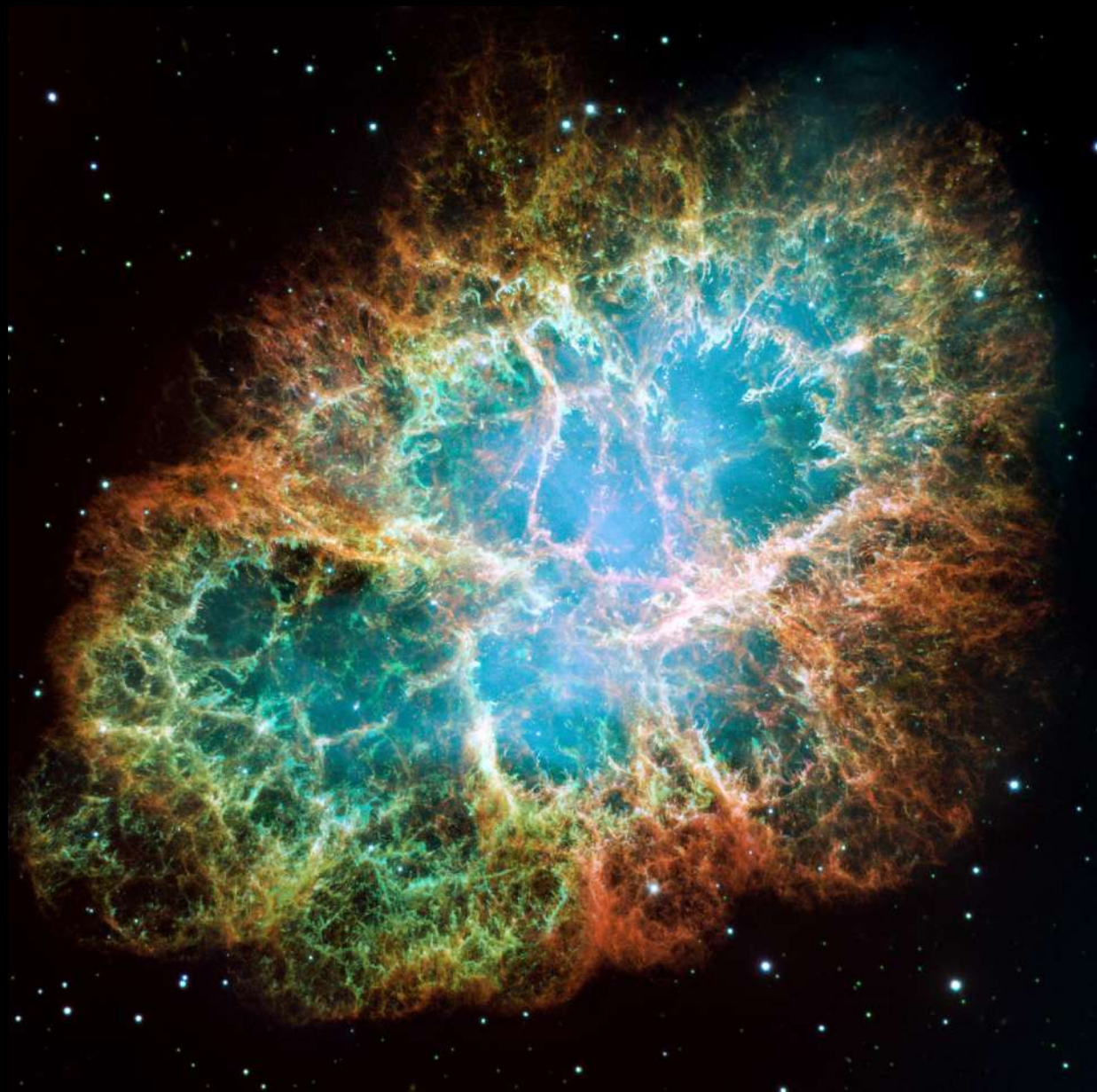
Nebula are found in spiral galaxies but not elliptical galaxies.

# Eagle Nebula





# Crab Nebula



# Reflection Nebula



# Name the Galaxy?



# Name the Galaxy?



# Name the Galaxy?

