



# From AYP to WRC: KeyTrain is Working in Georgia

Dr. Jeremy Dockery  
Assistant Principal  
Curriculum & Instruction  
Baldwin High School  
Milledgeville, GA

# Definitions and Concepts

- KeyTrain
- Career Ready 101
- National Career Readiness Certificate
- Georgia Work Ready initiative
- Ready for College, Ready for Work



# Part of a System



WorkKeys®



NATIONAL  
CAREER READINESS  
CERTIFICATE®



# Why do schools want to do this?

- Financial/People Constraints
- Need to meet AYP
- Increase graduation rates
- Produce Career Ready Graduates
- State initiative



# Employment, Education, Economic Development (E<sup>3</sup>)

Certified Work Ready Communities

Specified percent of county residents successfully  
attaining assessment

Increasing High School Graduation Rate

Community commitment



# Certified Work Ready Communities

County based criteria

3% existing workforce must earn certification

25% available workforce must earn certification

Increase High school graduation rate

Minimum Threshold

Set percentage increase

Based on class size



# Certified Work Ready Communities

- Sumter County was selected as an accelerated community for Georgia's Work Ready Communities Initiative which is based on WorkKeys.
- As part of this initiative, Americus Sumter High School committed to improving their graduation rate and awarding Work Ready Certificates to at least 25% of graduating seniors!



# How Students Obtain Certification

- All of Georgia's technical colleges are licensed testing centers
- South Georgia Technical College administers Americus Sumter High School's assessments
- Graduating seniors take the WorkKeys assessments in
  - Reading for information
  - Locating information
  - Applied Mathematics





# How Students Obtain Certification

- **Bronze certificate**
  - Level 3 or higher on all three assessments
- **Silver certificate**
  - Level 4 or higher on all three assessments
- **Gold certificate**
  - Level 5 or higher on all three assessments
- **Platinum certificate**
  - Level 6 on all three assessments



CERTIFIED  
WORK  
READY

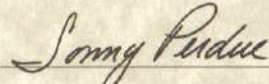
# Georgia Work Ready Certificate

## GOLD

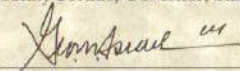
Is awarded to

**Jeremy Dockery**

In recognition of verified skills in Applied Mathematics,  
Locating Information, and Reading for Information



Sonny Perdue, Governor, State of Georgia



George Israel, President, Georgia Chamber of Commerce



Expires: 2/28/2013

WorkKeys®



ACT®



# KeyTrain & Career Ready 101

- KeyTrain and Career Ready 101 are Internet based, so students can log in from any computer on campus or at home
- All students in the school have a username and password
- KeyTrain is used as part of the curriculum in study skills/test prep classes and in all career/technical/agricultural education classes



# WorkKeys in Sumter County

- In the 2008-2009 school year, 85% of Americus Sumter High School's graduating seniors tested earned Work Ready Certificates
- In the 2009-2010 school year, 92% of Americus Sumter High School's graduating seniors tested earned Work Ready Certificates (reflects KeyTrain implementation year 1)
- In the 2010-2011 school year, 95% of Americus Sumter High School's graduating seniors tested earned Work Ready Certificates (reflects KeyTrain implementation year 2)



# How Does KeyTrain fit in?

- Sumter County Schools and Baldwin County Schools are Georgia Work Ready Communities
- This means the district **MUST** increase our Graduation rate **AND** 25% of graduating seniors **MUST** obtain a Career Readiness Certificate.



# How Does KeyTrain fit in?

- Did you know that KeyTrain is the only official WorkKeys curriculum?



# How Does KeyTrain fit in?

- KeyTrain is aligned with the WorkKeys assessments taken for certification. Part of the same system.
- KeyTrain offers training and remediation in the same three assessments REQUIRED for certification.
  - Reading for information
  - Locating information
  - Applied Mathematics
- Students can practice the skills needed for certification and see the style and types of questions they will be asked!!!



# KeyTrain Information

- Dissertation research shows that over 90% of students that used KeyTrain passed the Georgia High School Graduation Test.
- Sumter County is expanding the use of KeyTrain throughout the high school to prepare students for graduation and WorkKeys assessments.





# How Does KeyTrain fit in?

- KeyTrain is a comprehensive curriculum package aligned to the WorkKeys assessment.
- KeyTrain offers training and remediation in the same three assessments REQUIRED for certification.
  - Reading for information
  - Locating information
  - Applied Mathematics
- Students can practice the skills needed for certification and see the style and types of questions they will be asked!!!



# How Does KeyTrain fit in?

- Did you know?
- The KeyTrain Curriculum is FULLY aligned with the Georgia Performance Standards in Mathematics, English/Language Arts, and Physical Science classes for grades 6-12



# How Does KeyTrain fit in?

- Middle & High School Mathematics
- Middle and High School GPS correlations
- Arranged by topic groups
  - Number and Operations Standards
  - Algebra Standards
  - Geometry Standards
  - Data Analysis & Probability Standards
  - Processing Standards
- Correlated and referenced by standard for KeyTrain's Applied Mathematics and Locating Information!!!!



# How Does KeyTrain fit in?

- Middle School English/Language Arts
- Middle School GPS correlations
- Arranged by topic groups
  - Writing
  - Grammar
  - Listening/Speaking/Viewing
  - Reading
- Correlated and referenced by standard for KeyTrain's Reading for Information, Beginning Language Skills, Writing Skills, Writing, Business Writing!!!!



# How Does KeyTrain fit in?

- High School English/Language Arts
- High School GPS correlations
- Arranged by topic groups
  - Reading & Literature
  - Reading Across the Curriculum
  - Writing Focus
  - Conventions
  - Listening, Speaking, & Viewing
- Correlated and referenced by standard for KeyTrain's Reading for Information, Observation, Teamwork, Listening, & Business Writing!!!!



# How Does KeyTrain fit in?

- High School Physical Science
- High School GPS correlations
- Arranged by topic groups
  - Characteristics of Science
  - Nature of Science
  - Content
- Correlated and referenced by standard for KeyTrain's Observation, Problem Solving, Business Writing, Locating Information, Applied Technology, Thermodynamics, Mechanics, & Electricity!!!!



# How Does KeyTrain fit in?

- Career Skills and Job Profiles
- Correlates to CTAE Career Standards for grades 9-12
- Job profiles database allows students to search jobs by title, skill level, or category
- Can be used in career counseling and student motivation



# How Does KeyTrain fit in?

- Career Skills
- 200 lessons in 5 areas
  - Work Habits
  - Communication Skills
  - Workplace Effectiveness
  - Business Etiquette
  - The Job Search
- “Our teachers find KeyTrain essential in enhancing the relevant, rigorous, applied academic content in our Career Tech curricula.”



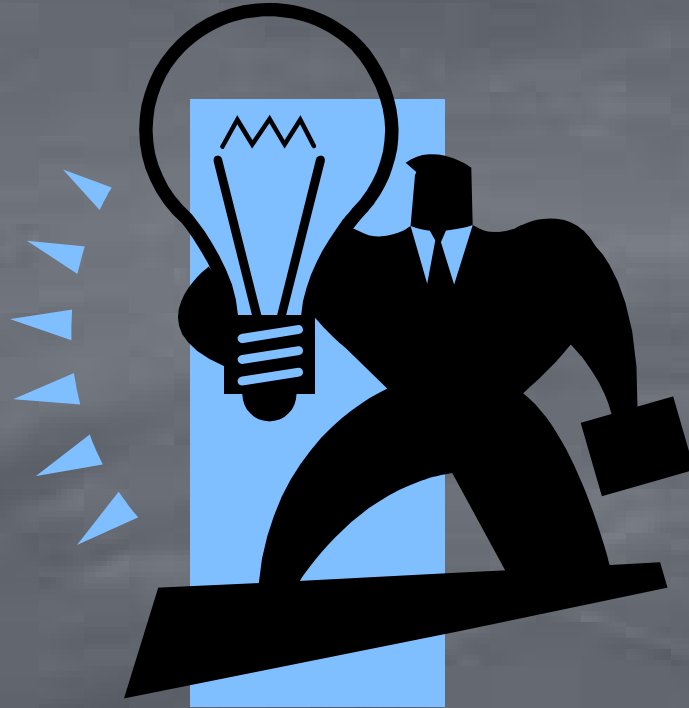


# How Does KeyTrain fit in?

- KeyTrain is bookmarked and fully operational in all computer labs at ASCHS
- All students in the school have a username and password
- KeyTrain is used as part of the curriculum in study skills/test prep classes and in all career/technical/agricultural education classes



# Applications & Implementation Ideas



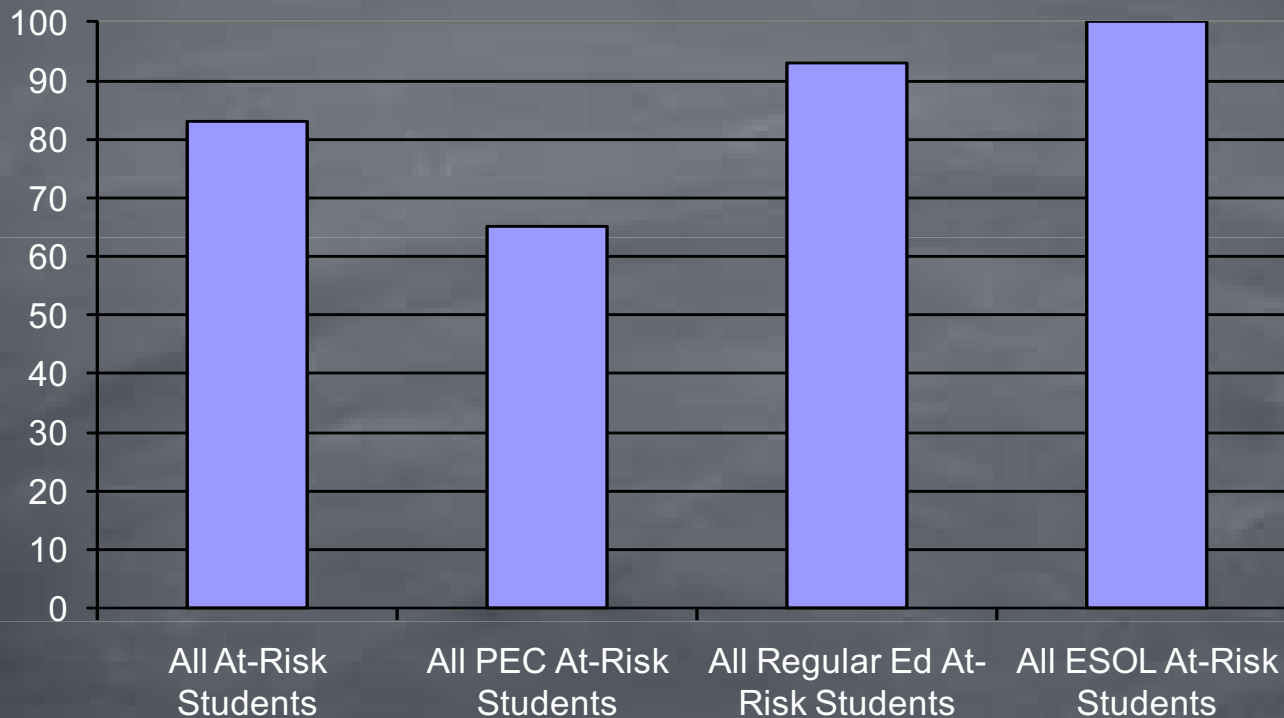
# State Exit Exam Preparation and Remediation

- Can be used as a stand alone study skills course or independent study before/after school or at home (Internet version only)
- Has been shown to improve graduation test scores in several states
- Improves student achievement on math, English, science, social studies, and writing tests used for state graduation tests/exit exams



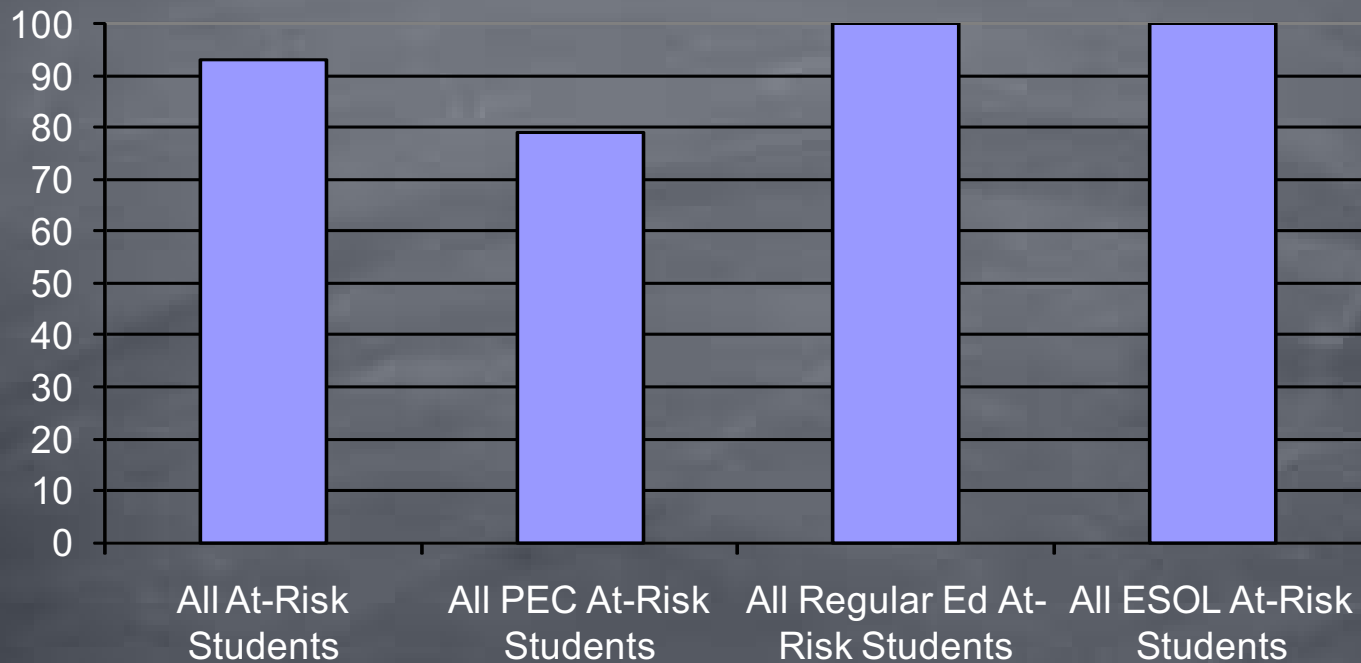
# KeyTrain Results

Baldwin High School Percentage of At-Risk Students who scored level 4 or higher in Applied Math and passed the Math GHSGT



# KeyTrain Results

Baldwin High School Percentage of At-Risk Students who scored level 4 or higher in Reading For Information and passed the Language Arts GHSGT



# GHSGT Results

**83% of all at-risk students scoring level 4 or higher on the KeyTrain "applied mathematics" module passed the GHSGT in mathematics**

**65% of at-risk PEC students scoring level 4 or higher on the KeyTrain "applied mathematics" module passed the GHSGT in mathematics**

**93% of at-risk Regular Ed students scoring level 4 or higher on the KeyTrain "applied mathematics" module passed the GHSGT in mathematics**

**100% of at-risk ELL students scoring level 4 or higher on the KeyTrain "applied mathematics" module passed the GHSGT in mathematics**



# GHSGT Results

**93% of all at-risk students scoring level 4 or higher on the KeyTrain "reading for information" module passed the GHSGT in language arts**

**79% of at-risk PEC students scoring level 4 or higher on the KeyTrain "reading for information" module passed the GHSGT in language arts**

**100% of at-risk Regular Ed students scoring level 4 or higher on the KeyTrain "reading for information" module passed the GHSGT in language arts**

**100% of at-risk ELL students scoring level 4 or higher on the KeyTrain "reading for information" module passed the GHSGT in language arts**



# Additional High School Applications

- Credit Recovery
- Special Education & ESOL
- Before/After School
- Career / Tech Ed
- At Risk/Alternative Schools
- Adult Ed





# Diagnostic testing

- Used as a method for identifying students with deficiencies in math and reading so that targeted assistance can be provided prior to the administration of State exit exams
- Used as a starting point for many other high school applications



# Credit Recovery

- Allows students to work independently to recover a credit from a previously failed course
- Can be offered within the regular school day in a computer lab or assigned for independent study outside of school (Internet version only)
- Allows students to potentially earn/recover more credits than allowed in a normal high school schedule (6, 7 or 8 classes per school year depending on schedule)



# Special Education & ESOL

- Beginning Skills
- Workbooks
- Reading/Math/Locating to achieve NCRC
- How does KeyTrain fit in with a student's IEP?
- Individualized goal setting and gap skills training.



# Before/After School

- Students can work individualized prescriptive lessons to improve performance in weak areas
- Improvements in Math and English have been documented in studies



# Career/Tech Ed Distributive Education classes

- CTE Foundation Skills
- Career Ready 101 lessons on Resume Writing, Job Search, Job Application
- Career Skills lessons on Work Habits, Workplace Effectiveness, Communication, etc.
- Job Profiles – Career Pathways



# At-Risk & Alternative Education

- Targeted Remediation
- Gap Skills Training
- Credit recovery
- Test prep
- Stand Alone courses



# Adult Education

- Preparation for GED
- NCRC/CRC Preparation
- TABE
- Resume writing & job skills



# Obtaining Permissions & Buy-In

- State Board of Education
  - Stand alone course and credit recovery
- Local superintendent and board
- Collaboration & organization
- Planning & stakeholder involvement





# Implementation Options/Models

- Diagnostic Testing
- Integrated into Curriculum
- Stand Alone Course
- Gap Skills Training
- CRC Programs



# Integrated into Curriculum

- Included within the scope and sequence of traditional high school classes
  - Reading for information – English/Language Arts classes
  - Applied Mathematics – Math classes
  - Locating Information – Science and Social Studies classes
  - Applied Technology – Engineering, Technology, physical science, and physics classes
  - Business Writing – Business and English classes
  - Listening, Observation , Teamwork – CTE classes (foundation skills)
  - Writing – English/Language Arts classes
  - Career Skills and Finding Your Career – CTE classes



# Stand Alone Course

- Used as a course for high school credit
- Computer based instruction for math, English, technology, or business
- Correlations between KeyTrain and State curriculum standards based on State approved course codes



# Gap Skills Training

- Build core knowledge by working through prescribed lessons based on pre-test performance.
- Lessons are individualized to the specific student's needs and the identified goal for each topic
- Link to IEPs & Special Education



# CRC Programs

- Provides remediation and practice for the ACT/WorkKeys assessment in applied math, reading for information, and locating information
- Job profile data base linked to score levels in each area



# Financial Literacy curriculum (Career Ready 101)

- For those states/districts with Financial Literacy standards or life skills classes.
- Online instruction and teacher resources, PowerPoints, activities, worksheets, quizzes, etc.
- Applications for integrated curriculum or stand alone course.



# Identifying Career Pathways

- State Career Pathways
- Job Profile Database
- Interest Inventory
- Career Clusters Overview



# Correlating to State Curriculum

- Match state curriculum objectives to KeyTrain<sup>®</sup> curriculum objectives
- Needed to obtain permissions and buy-in
- Examples of curriculum correlations between KeyTrain<sup>®</sup> and Georgia curriculum standards are available upon request for a limited number of courses (Math, English, and some CTAE)





# Scheduling & Classes

- Flexibility in scheduling and seat time waivers
- Sufficient computer access for KeyTrain® use
- Test prep courses, stand alone courses, credit recovery courses, imbedded curriculum, before/after school use, at home use



# CareerReady101

- New comprehensive curriculum package from ThinkingMedia
- Used as integrated curriculum in CTAE courses in Sumter County
- Correlated to computer applications I, computer applications II, business communications & presentations, and marketing.



# CareerReady101

- Pilot study conducted in the 2009/2010 school year
- Classroom observations, student surveys & focus groups, and faculty surveys were conducted



# Relevance and Motivation

- Student Buy In
- Grades
- Incentives
- Competition



# Implementation Decisions

- Professional development
- Resource allocation
- TIME
- Determining a program administrator
- Creating instructor accounts
- Creating student accounts
- Assigning lessons



# Progress Monitoring & Reporting

- Student Status Report
- Class Status Report
- Student Progress Monitoring
- Administrative Monitoring for Accountability



# WorkKeys Assessments

- Used for Career Ready Certification
- Approved Testing Sites
- Developing Partnerships
- Administering Assessments
- [www.workkeys.com](http://www.workkeys.com)



# Common Pitfalls

- Training
- Time
- Resources
- Scheduling
- Dedication
- Resistance
- Technical infrastructure
- Monitoring





# Information

- Weekly webcasts
- Trainings
- Upgrade to Career Ready 101
- High school manual
- Survey
- Follow up email with more information



# Implications

- At present the GHSGT is the official accountability measure used by the State of Georgia to report academic progress for NCLB.
- Many schools are not making Adequate Yearly Progress (AYP) because of low GHSGT scores among certain subgroups of students.
- Computer Assisted Instruction (CAI) has been used for decades to supplement traditional lecture based instruction.



# Implications

- Research shows that these methods are successful in improving student learning.
- If at-risk students are targeted for computer based remediation, it could have profound impacts on student achievement and consequently school's AYP status.
- This application also has implications for closing the achievement gap for females and minorities in high school classes.



# Implications

- High Schools in Georgia are expanding the use of KeyTrain throughout the high school to prepare students for graduation and WorkKeys assessments.
- The ultimate impact will be increased student achievement, which will eventually produce higher scores on the GHSGT and help schools meet AYP!!!!



# Questions

