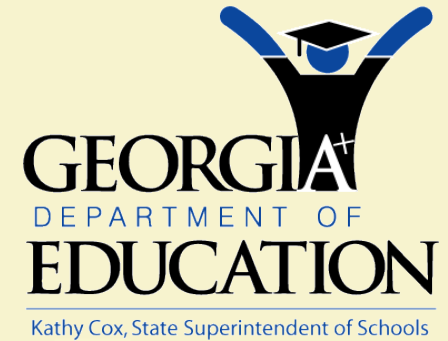


**Emily Spann, Development
and Transition Program
Manager**

espann@doe.k12.ga.us

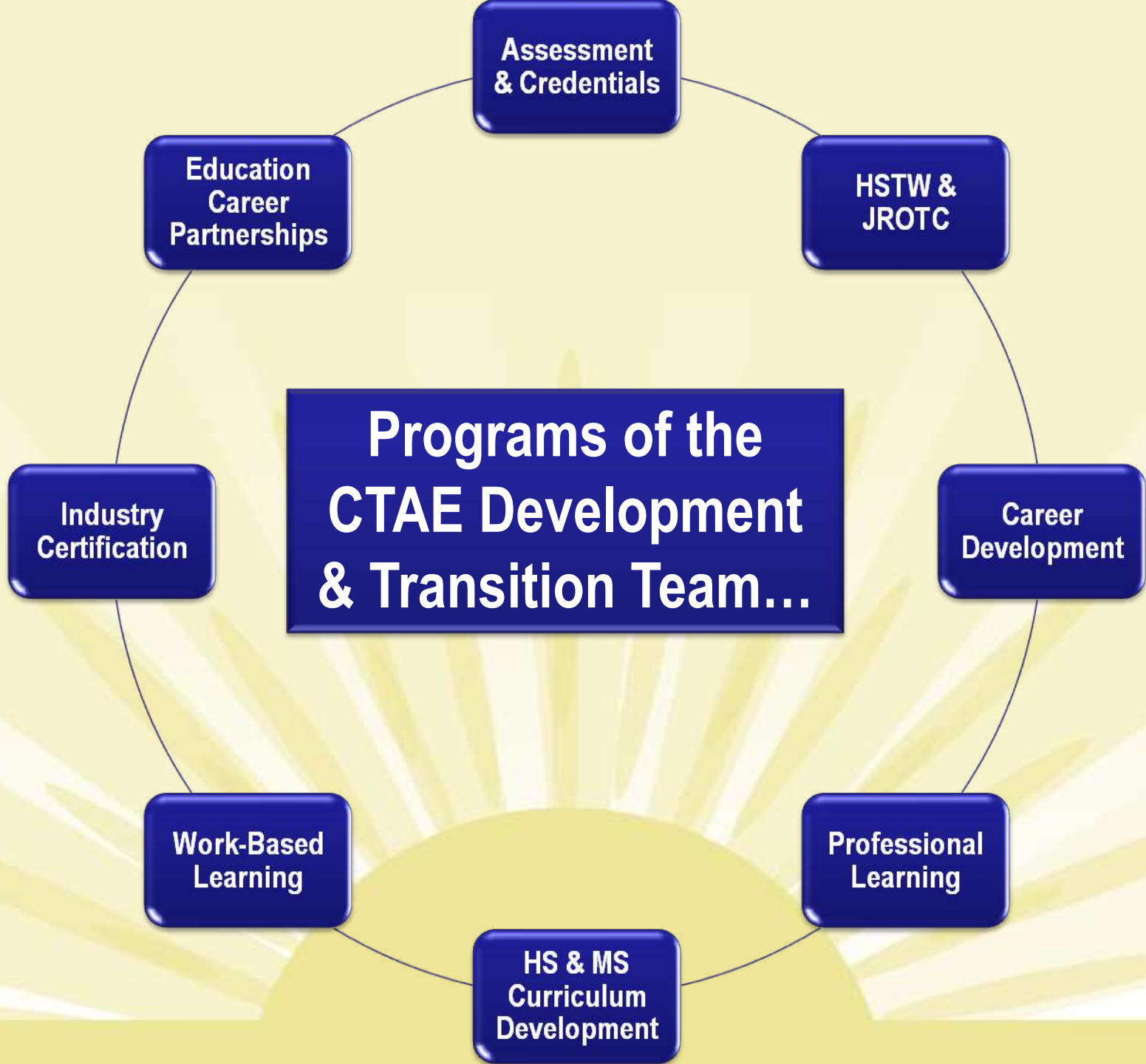


**Development
and
Transition Unit**



**Career,
Technical
and
Agricultural
Education**

*We will lead the
nation in improving
student achievement.*



National CTAE Credentialing Opportunities

*We will lead the
nation in improving
student achievement.*

National CTAE Credentialing Opportunities

Preparing Georgia CTAE Pathway Completers for the Global Workplace

- **Student Credentialing Opportunities:**
 - Offered to CTAE pathway completers to meet Perkins IV Legislation Core Indicator 2S1 – Technical Skill Attainment
 - Administered as end-of-pathway assessments that provide students with national credentialing opportunities where possible
- **National Credentials:**
 - Provides the student with a professional credential that is highly-valued by business and industry
 - Shows employer that the student has acquired specific knowledge, skills and experience in a specialized area
 - Shows that students can compete on both national and global levels

National CTAE Credentialing Opportunities


Preparing Georgia CTAE Pathway Completers for the Global Workplace

- **Georgia's Credentialing Model will:**
 - include a combination of national credentialing exams and state developed exams
 - unfold over the next four years with some exams being dispensed January and May 2010
- **Data from credentialing exams can:**
 - be used to demonstrate student achievement
 - provide a continuous means for curricular/program improvement
 - serve as a critical accountability mechanism for Perkins IV Core Indicator 2S1

Optional Assessment Request for Assistance-

Page 1

Indicate a potential proctor name



Assistance Needed with FY2010 CTAE Assessment Activities

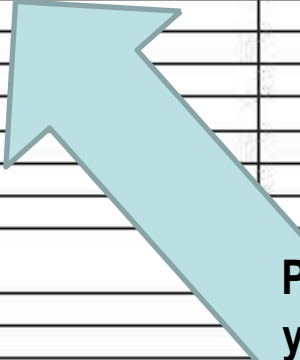
The Career, Technical and Agricultural Education (CTAE) Division of the Georgia Department of Education is seeking assistance of pathway assessment activities during the 2009-2010 school year. Please review the attached lists and provide us with any po

CTAE Administrator Name:	System Name:
Email Address:	Telephone Number:

Testing Activities: If your system has pathway completers in any of the following career pathways, please consider participating in testing activities (which includes one of the following: piloting, field testing, or administering actual exams) for the below pathway areas:

Career Pathway	Estimated Number of Pathway Completers	School Name	Designated Proctor Name & Telephone Number
Accounting			
Agriscience			
Architectural Drawing & Design			
Computing			
Construction			
Early Childhood Education			
Engineering			
Fashion Marketing			
Marketing Communications & Promoting			
Marketing & Management			
Manufacturing			
Plant Science/Horticulture			
Teaching as a Profession			
Therapeutic Services/Medical Services			
Therapeutic Services/Nursing			
Transportation Logistical Operations			
Transportation Logistical Support			

Please estimate your Number of Pathway Completers




Optional Assessment Request for Assistance

Page 2

Assessment Development Activities: Subject Matter Expert (SME) Teams will be convened to continue assessment development activities for Phase IIB and specific Phase III Career Pathways. If you would like to recommend an instructor from your system to serve on a team, please complete the requested information for all recommendations. CTAE Administrators may also serve as team members.

Career Pathway	Instructor or CTAE Administrator	System/School Name	Email Address	Telephone Number/ Cell Phone Number
Agricultural Mechanics				
Aircraft Support				
Animal Science				
Biotechnology Research & Development				
Computing Networking				
Computer Systems & Support				
Consumer Services				
Culinary Arts				
Diagnostic Services				
Electronics				
Energy Systems				
Engineering Graphics & Design				
Financial Management Services				
Flight Operations				
Forestry/Natural Resources				
Graphic Communications				
Graphic Design				
Health Informatics				
Interactive Media				
Interior Design				
Law & Justice				
Nutrition & Food Science				
Sports & Entertainment Marketing				
Therapeutic Services – Emergency Services				
Travel Marketing & Lodging Management				

Recommend instructors from your system to serve on an Assessment Development Activities Team

Finally: If interested, send this form electronically to Mamie Hanson at mhanson@doe.k12.ga.us by August 31, 2009

Teams will convene between late fall 2009 and early 2010. Please forward completed forms electronically to Ms. Mamie Hanson at mhanson@doe.k12.ga.us by August 31, 2009.

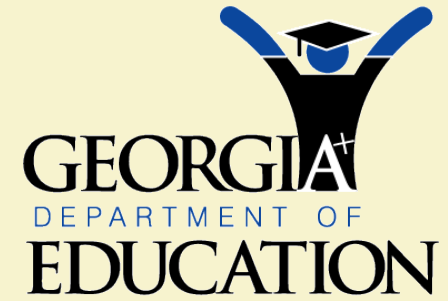
A stylized sunburst background with a large yellow semi-circle at the bottom center, from which numerous yellow rays of varying lengths radiate upwards and outwards, creating a bright, sun-like effect against a light yellow background.

Mamie Hanson

Assessment Coordinator

mhanson@doe.k12.ga.us

404-657-6279



Kathy Cox, State Superintendent of Schools

Update on CTAE High School & Middle School GPS Curriculum

*We will lead the
nation in improving
student achievement.*

GPS CTAE Curriculum Drafts

Available for review & feedback on links listed below:

Curriculum Drafts Review Deadline: July 31, 2009

http://www.gadoe.org/ci_cta.aspx?PageReq=HSPhaseIVReview

http://www.gadoe.org/ci_cta.aspx?PageReq=MSPhasellReview

Government & Public Safety

- Middle School
- JROTC

- Air Force
- Army
- Marine Corps
- Navy

Marketing, Sales & Services

- Middle School

Healthcare Science

- Personal Care Services
- Physical Medicine

Architecture, Construction, Communications & Transportation

- Climate Control Systems Technology (HVACR)
- Collision Repair
- Metals
- Middle School



Anticipated approval date for the new GPS curriculum: September 10, 2009

Ann Hatchell
High School Curriculum Coordinator
404-657-6845
ahatchel@doe.k12.ga.us



John Pritchett
Middle School Curriculum Coordinator
404-656-3551
jpritchett@doe.k12.ga.us

The background features a stylized sunrise with a semi-circle at the bottom and rays extending upwards. The text is centered in a bold, blue font.

Education Career Partnership Program Update

Clarification of the Education Career Partnership (ECP) Representative

Definition of ECP Representative:

- **The person assigned on the FY 2010 ECP Grant Application by the System CTAE Director is the ECP Representative for the local system.**
- **The ECP Representative may or may not be the system director**

ECP Representative Emphasis:

- **The ECP Representative should work directly with the CTAE Director to ensure that ECP Best Practices are implemented throughout the school system and that accurate information is provided for the mid-year and annual ECP reports**

We Need Your Assistance to Ensure Effective Statewide ECP Communication!

- An email was sent to CTAE Directors on July 17, asking you to verify the accuracy of the ECP Representative Contact Information for your system. Please respond to Gary Mealer by Friday, July 31, if you have any changes.
- Please make sure that changes during the year are communicated to Gary Mealer to make sure that the contact information is up-to-date and accurate.

Note: The DOE will send copies of ECP communication to the CTAE Directors, but we need to have an accurate list of ECP Representatives

**Monthly ECP Best Practices Webinars through
Elluminate will be provided for ECP
Representatives and CTAE Directors
by the GaDOE Staff (Gary Mealer)**

FY 2010 ECP Webinars

**Will be held on the Third Wednesday of each
month starting *August 19, 2009* and
continuing through May 2010**

Webinar Time: 9:30 – 10:30 a.m.

A stylized sunburst background with a large yellow sun at the bottom center and rays extending upwards and outwards. The text is centered over this background.

Gary Mealer

Program Specialist

Education Career Partnerships

404-463-8197

gmealer@doe.k12.ga.us

Georgia JROTC and *HSTW* Update

*We will lead the
nation in improving
student achievement.*

Georgia JROTC

**About 100
JROTC
instructors
are here
at GaCTE**

**HB229 does
not affect
schools that
fulfill the
Health & PE
requirement
(3 years of
JROTC)**

**New GPS
developed
for the
JROTC
curriculum
(Phase IV)**

**JROTC
Cadets may
join the
National
Technical
Honor
Society**

High Schools That Work (*HSTW*)

- Congratulations to the following schools for receiving awards in July 2009

at the *HSTW* conference:

Mays High School

South Atlanta High School

Conyers Middle School

Babb Middle School

- Georgia had 835 attendees at the recent *HSTW* Summer Staff Development Conference (tied for *Highest Number of Registrants*).
- Total number of conference attendees was approximately 7,500.
- Appreciation is extended to the 76 schools from Georgia that presented sessions during the *HSTW* conference.





High Schools that Work (*HSTW*) (continued)

- Approximately 70 *HSTW* sites in place for 2009-2010
- The *HSTW* Assessment will be administered in January 2010
- Upcoming *HSTW* Assessment workshops or Elluminate webinars in the fall
- Upcoming “*HSTW* Best Practices” Elluminate webinars
- Tentative plans are now being made for CTAE and *HSTW* to sponsor a math, science, and CTAE regional integration workshop

Career-Related Education

Update on Work-Based Learning and Youth Apprenticeship Programs

*We will lead the
nation in improving
student achievement.*

Accessing Career Related Education and Youth Apprenticeship Information on the GaDOE Webpage www.gadoe.org

CONTACT INFORMATION



Gary Steppe
Director, Career, Technical
and Agricultural Education
1754 Twin Towers East
205 Jesse Hill Jr. Drive SE
Atlanta, GA 30334
☎ (404) 657-8317
📠 (404) 651-8984
✉ gsteppe@doe.k12.ga.us

[Staff Contact List](#)

[Report Problems with this Page](#)

▼ [Career Pathways Course Numbers / Career Pathway Chart](#)

Program Delivery

- [Agriculture](#)
- [Architecture, Construction, Communication and Transportation](#)
- [Business and Computer Science](#)
- [CTSO Student Recognition](#)
- [Culinary Arts](#)
- [Education](#)
- [Family and Consumer Science](#)
- [Engineering and Technology](#)
- [Government and Public Safety](#)
- [Healthcare Science](#)
- [Marketing, Sales and Services](#)
- [Special Population](#)
- [Student Organizations](#)

Development and Transition

- [Career Development](#)
- [Career Related Education](#)
- [Education Career Partnerships](#)
- [High Schools That Work](#)
- [Industry Certification Standards](#)
- [JROTC](#)
- [Middle School Performance Standards](#)
- [Professional Development](#)
- [Youth Apprenticeship Program](#)

CTAE Accountability and Improvement

- [CTAE Reports - Performance Indicators](#)
- [Facilities, Capital Equipment and Equipment Lists](#)
- [Local Plan Application and Online Forms](#)
- [Perkins IV Georgia's Five-Year Plan](#)

CTAE Publications

- [Career Concentrations \(2009\)](#)
- [Architecture, Construction, Communications and Transportation](#)

NEWSLETTERS

- ◆ [March 2009](#)
- ◆ [December 2008](#)
- ◆ [November 2008](#)
- ◆ [June 2008](#)
- ◆ [May 2008](#)

» More

PRESENTATIONS

- ◆ [Pathways to the Future Delivery Introduction 1 of 7](#)
- ◆ [Georgia Work Ready: Pathways to the Future presentation 2 of 7](#)
- ◆ [Workforce Challenge with Proven Results: Pathways to the Future 3 of 7](#)
- ◆ [Education Career Planning: Pathways to the Future 4 of 7](#)
- ◆ [Education with a Purpose: Pathways to the Future 5 of 7](#)

» More

DIRECTORIES

- ◆ [CTAE System Contact List October 2008](#)
- ◆ [Youth Apprenticeship Directory by Region Fall 2007](#)
- ◆ [Youth Apprenticeship Advisory Council Members 2007-2008](#)
- ◆ [Youth Apprenticeship Region Map](#)

HELPFUL LINKS

- ◆ [CTAERN web site](#)
- ◆ [2007 New Georgia Career](#)

Accessing the CTAE Career-Related Education Manual on the GaDOE webpage

The screenshot shows the Georgia Department of Education website. At the top, there is a navigation menu with links: Home, About GaDOE, State Board of Ed., School Improvement, Curriculum, and Data Reporting. Below this is a banner with the Georgia Department of Education logo on the left, the tagline "Improving student achievement. Georgia Department of Education" in the center, and a photo of a young girl in a graduation cap on the right. A search bar with the text "AskDOE" and a "Search" button is located at the bottom right of the banner.


Below the banner, a breadcrumb trail reads: Home » About GaDOE » Office of Standards, Instruction and Assessment » Career, Technical and Agricultural Education » Career Related Education.

The main content area is titled "Standards, Instruction and Assessment Career, Technical and Agricultural Education" with the subtitle "Creating a world-class workforce for Georgia in the 21st Century." A red arrow points from this title area to a "HELPFUL WEB LINKS" box on the right side of the page. Inside this box, the link "CRE Manual" is circled in red.

The "HELPFUL WEB LINKS" box contains the following links:

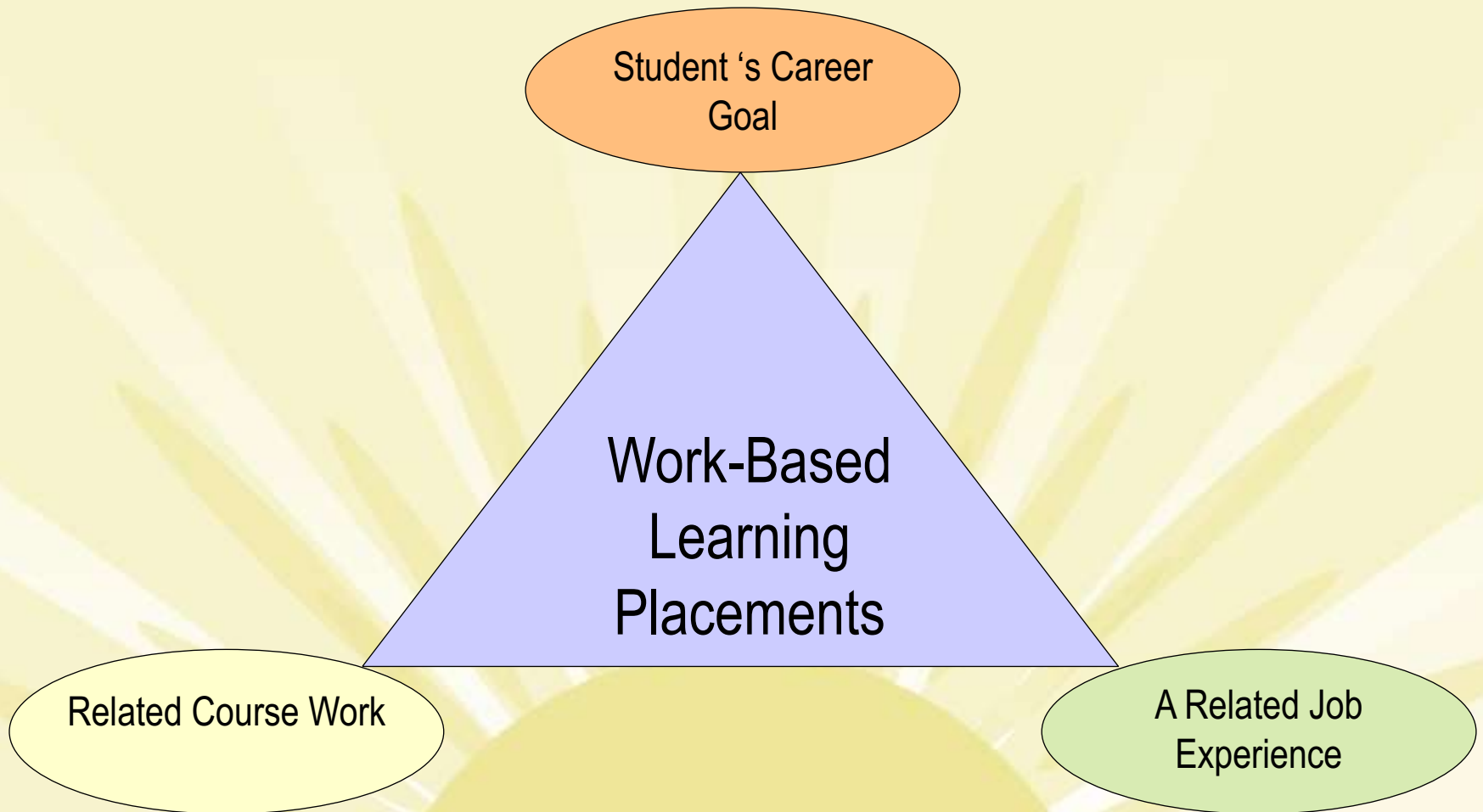
- ◀ CRE Manual
- ◀ Office of Apprenticeship
- ◀ CRE Related Websites

Other sections on the page include:

- DIVISIONS**
 - ◀ Communications
 - ◀ Career, Technical and Agricultural Education
 - ◀ Curriculum and Instructional Services
 - ◀ Special Education Services and Support
 - ◀ Innovative Academic Programs
 - ◀ Testing
- CONTACT INFORMATION**
 - 

Dwayne Hobbs
1752 Twin Towers East
205 Jesse Hill Jr. Drive SE
Atlanta, GA 30334
- Career Related Education**
(Including Information for Work-Based Learning Programs)
[Career Related Education Manual \(Work-Based Learning\)](#)
Career Related Education (CRE) is structured age appropriate experiences which prepare students for the school-to-career transition. The range of CRE experiences begin with Career Awareness and Exploration in middle school and culminate with work-based learning during the eleventh and twelfth grade. Work-Based learning provides students the opportunity to be enrolled in an internship, cooperative education or youth apprenticeship.
- Career Related Education Manual**
(Including Standards and Guidelines for Work-Based Learning)
The Career Related Education Manual formerly titled Standards and Guidelines for Work-Based Learning Programs in Georgia was revised and disseminated in 2007. The link to the CRE Manual can be found in the blue box labeled "helpful links". Twenty four standards provide guidance to all aspects of Career Related Education. Standards one through five assist all Career Technical and Agricultural Education teachers in integrating CRE activities into the classroom.
- CRE PRESENTATIONS**
- FILES & PRESENTATIONS**
 - ◀ Graduation Coach Training presentation 2008
 - ◀ Education and Career Planning Tool Guidance
 - ◀ Teacher As Advisor streaming video
 - ◀ Peach State Pathways Planning Tool Presentation
 - ◀ Career Development Illuminate
 - » More

Three Common Denominators for All Work-Based Learning Placements





Perkins Designations for CTAE Students

- **Participant** – A student who is enrolled in or has taken a CTAE class during his/her high school career
- **Concentrator** – A participant that has taken a minimum of three CTAE classes in a program concentration during his/her high school career
- **(Pathway) Completer** – A concentrator who completes the requirements of the High School Graduation Test (GHS GT) and also the specified course requirements (three sequenced courses) for a particular CTAE pathway

Work-Based Learning Enrollment for Concentrators

- **Work-Based Learning (WBL) enrollment (new or old numbers) should count in any CTAE concentration if all WBL placement criteria is in place.**
- **Work-Based Learning enrollment should not be considered part of pathway completion. This applies to both the old and new graduation rule.**
- **Work-Based Learning placement criteria is located on pages “6-4” through “6-14” of the GaDOE Career Related Education Manual.**

Work-Based Learning Preparation Program

- 1. Technical Update for existing preparation fields with Work-Based Learning (WBL):**

(DCT Endorsement, Marketing, Business & Computer Science, Family & Consumer Science, Agriculture)

Completion of Course 1 & 2 (for PLU credit only) of the new WBL Preparation Program

- 2. New Endorsements: Complete Course 1 & 2 and (assuming PSC approval) complete the course 3 internship**
- 3. Youth Apprenticeship (YAP) Coordinators enrolling only YAP students: Complete Course 1 & 2 (for PLU credit only) of the new WBL Preparation Program or the GaDOE sponsored “New YAP Coordinators Training”**
- 4. New YAP Coordinator Training is third week in August in Macon – register on the CTAE Resource Network website at www.CTAERN.org**

Promotional Materials with the new Work-Based Learning Logo or the YAP Logo available from:

Mathews Printing
Rhonda Conner
770-536-3439



System Directors may access statewide C-NET Data to follow up with schools on the CTAE Resource Network Website

All WorkshopRolls

CTAERN NewsLetter

Administration - DOE

CTAE System Contact

CTAE School Contact

YAP Employer Labels

ECP Annual Report

Directory - DOE

Directory - CTAE Sys Cont

Directory - System Level

Program Specialist - Email

Program Specialist - Edit POW

State Directory

Reports

Kennesaw, GA 30156 (ma

NOTICE: Workshops will b

C-NET - Transfer Students

C-NET - StateWide

Extended Day - Process

GA School System List

mySchools

mySystemLevelStaff

School Contact Designations - POW

State Directory

GA School System Stats

re looki

aDOE F

ble. Th

preciate

ES to e

is mai

ewide.

will use

networki

The background of the slide features a stylized sunburst design. At the bottom center, there is a semi-circle representing the sun, from which numerous rays of varying lengths and thicknesses extend upwards and outwards, creating a fan-like effect. The entire background is a light yellow color.

Dwayne Hobbs

Program Specialist

Work Based Learning And Youth Apprenticeship

404-657-8334

ahobbs@doe.k12.ga.us

CTAE Professional Learning Update

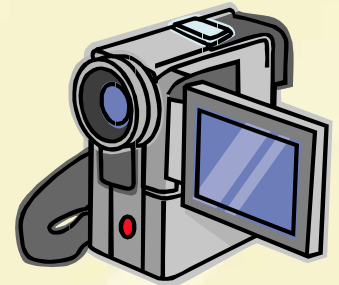
*We will lead the
nation in improving
student achievement.*

CTAE: Use of 21st Century Professional Learning Tools



Webinars

Video Libraries



Podcasts

Web Cam (2-way video)



World Wide Web

A Look Into The Future. . .

Upcoming CTAE Multi-Module Professional Learning Strands



Strand: Standards Based Instruction: Rigorous CTAE Programs

Strand: CTAE – Making the Connection to AYP

Strand: Academic Application/Integration/Reinforcement

Strand: Perkins Funding – How Can I Use It Legally?

Strand: The Value of a Quality CTAE Promotional Plan

Strand: Components of a Quality CTAE Program

Strand: Standards Based Instruction – Quality Teaching Habits

Strand: Teachers As Advisors (TAA) System Level





CTAE Professional Learning Resources

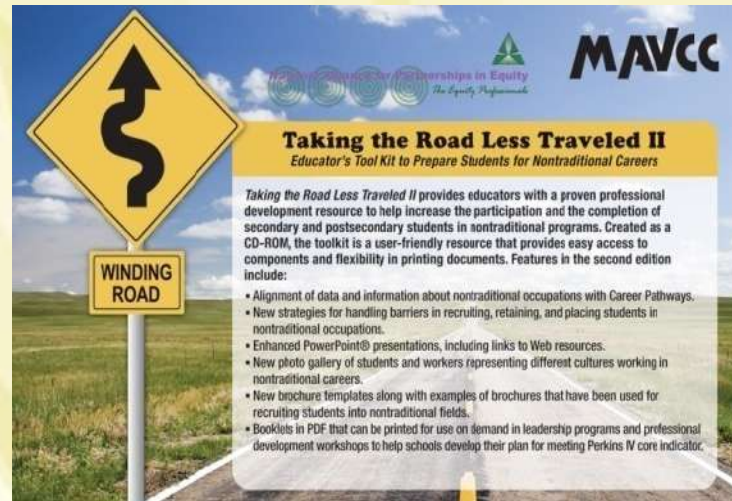
A New CTAE “Library” of Illuminate Webinars

- Will include all FY 2009 Training Webinars
- Will be available to you whenever you need them!
- Will be posted on the GaDOE website under “CTAE Professional Learning” at www.gadoe.org
- Will be a great redelivery professional learning resource

Available August 2009

FY 2010 Nontraditional Update (Core Indicators 6S1 & 6S2)

- At this GaCTE conference....CTAE Directors will receive the new and up-dated **“Taking the Road Less Traveled”** toolkit for School Staff Non-Traditional



Note: Look for an upcoming webinar (Elluminate) on using the new Toolkit and Non-Traditional Strategies

Teachers-as-Advisors (TAA) Update

- Year-long Train-the-Trainer Webinar Series (through Elluminate) for system level Teachers as Advisors teams appointed by the system Superintendent
- Award of five (5) PLUs to team members





Coming Soon: A Newly-Enhanced GaCollege411.Org Website

- Look for the newly enhanced www.GaCollege411.org website to be rolled out during July and August 2009!
- CTAE will have the following additional tools, resources and materials on this website located under the new **“Professional Center”** section of the GaCollege411.org
 - New Videos: *“Making the Georgia Connection,” “Keep on Going!”*, *“College Credits in High Schools,”* and *“Financial Aid 101”*
 - Narrated Power Points: *“Selecting your Peach State Pathway”*; *“Keep on Going”*; and *“Paying for Postsecondary Education”*
 - “Individual Graduation Plan Guidebook”: Electronic guidelines for utilizing and implementing an individual graduation plan

A stylized sunburst graphic with a semi-circle at the bottom and rays extending upwards, set against a light yellow background.

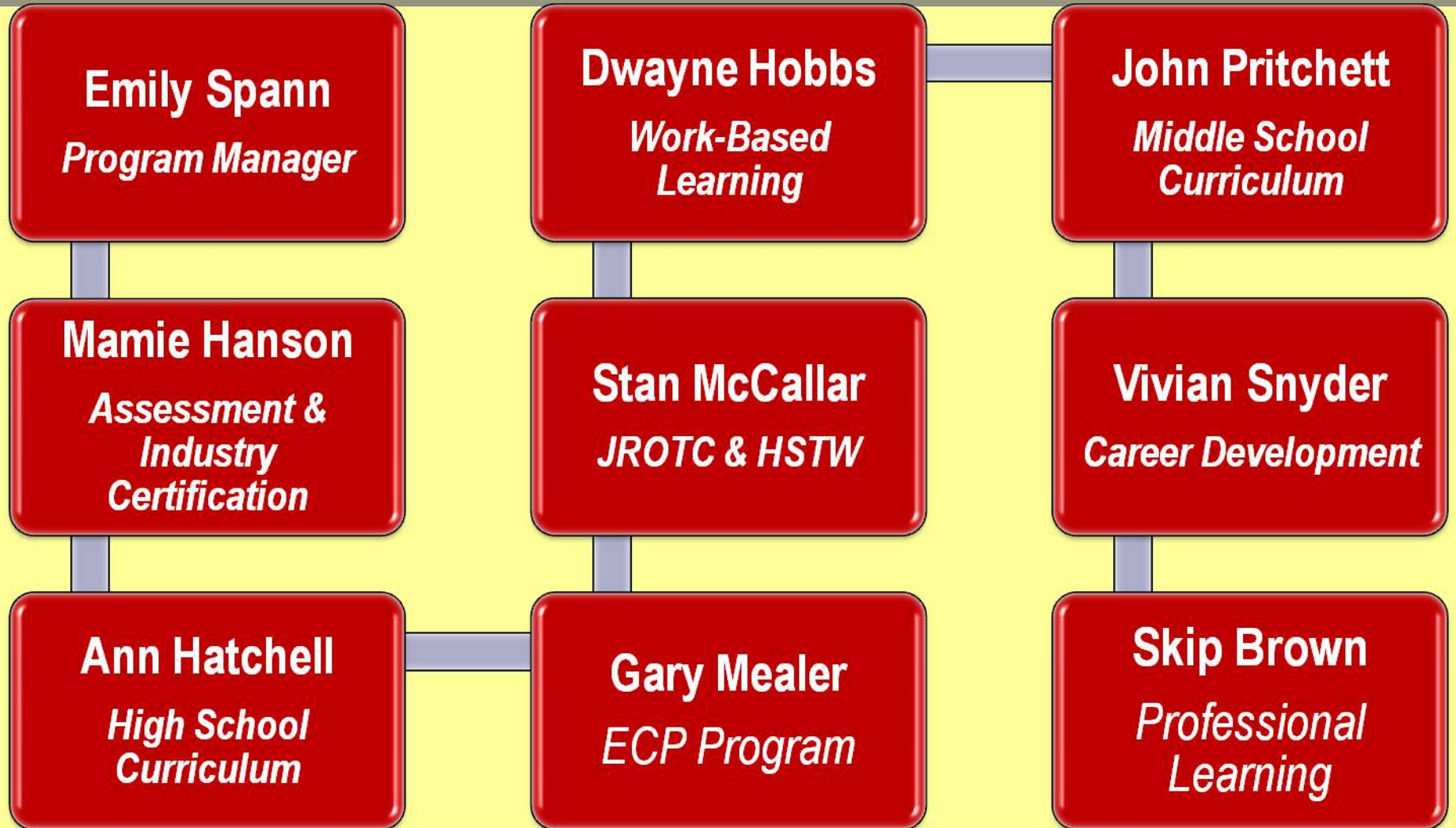
Vivian Snyder

CTAE Career Development Specialist

404-657-8331

vsnyder@doe.k12.ga.us

Finally...The CTAE Development & Transition Team is here for you!





THANK YOU!

www.gadoe.org/ci_cta.aspx

Standards, Instruction and Assessment Career, Technical and Agricultural Education Creating a world-class workforce for Georgia in the 21st Century.

DIVISIONS

- ◀ [Communications](#)
- ◀ [Career, Technical and Agricultural Education](#)
- ◀ [Curriculum and Instructional Services](#)
- ◀ [Special Education Services and Support](#)
- ◀ [Innovative Academic Programs](#)
- ◀ [Testing](#)

CONTACT INFORMATION



Gary Steppe
Director, Career, Technical and Agricultural Education
1754 Twin Towers East
205 Jesse Hill Jr. Drive SE
Atlanta, GA 30334
☎ (404) 657-8317
✉ (404) 651-8984
✉ gsteppe@doe.k12.ga.us

[Staff Contact List](#)

[Report Problems with this Page](#)

VISION

"To create a secondary profile of career readiness for Georgia."

High School Career Pathways

- [Career Pathways Overview](#)
- [Career Pathways Phase I \(Implemented Fall 2007\)](#)
- [Career Pathways Phase II \(Implemented Fall 2008\)](#)
- [Career Pathways Phase III \(Implemented Fall 2009\)](#)
- [Career Pathways Description and Course Descriptions](#)
- [Career Pathways Course Numbers / Career Pathway Chart](#)
- [Phase IV Career Pathways Public Review Site - High School](#)
- [Phase II Program Area Public Review site - Middle School](#)

Program Delivery

- [Agriculture](#)
- [Architecture, Construction, Communication and Transportation](#)
- [Business and Computer Science](#)
- [CTSO Student Recognition](#)
- [Culinary Arts](#)
- [Education](#)
- [Family and Consumer Science](#)
- [Engineering and Technology](#)
- [Government and Public Safety](#)
- [Healthcare Science](#)
- [Marketing, Sales and Services](#)
- [Special Population](#)
- [Student Organizations](#)

Development and Transition

- [Career Development](#)
- [Career Related Education](#)
- [Education Career Partnerships](#)
- [High Schools That Work](#)
- [Industry Certification Standards](#)
- [JROTC](#)
- [Middle School Performance Standards](#)
- [Nontraditional Occupations](#)
- [Professional Development](#)
- [Youth Apprenticeship Program](#)



NEWSLETTERS

- ◀ [March 2009](#)
- ◀ [December 2008](#)
- ◀ [November 2008](#)
- ◀ [June 2008](#)
- ◀ [May 2008](#)

» More



GaDOE –CTAE Conference Presentations

PRESENTATIONS

- ◀ [Pathways to the Future Delivery Introduction 1 of 7](#)
- ◀ [Georgia Work Ready: Pathways to the Future presentation 2 of 7](#)
- ◀ [Workforce Challenge with Proven Results: Pathways to the Future 3 of 7](#)
- ◀ [Education Career Planning: Pathways to the Future 4 of 7](#)
- ◀ [Education with a Purpose: Pathways to the Future 5 of 7](#)

» More

