

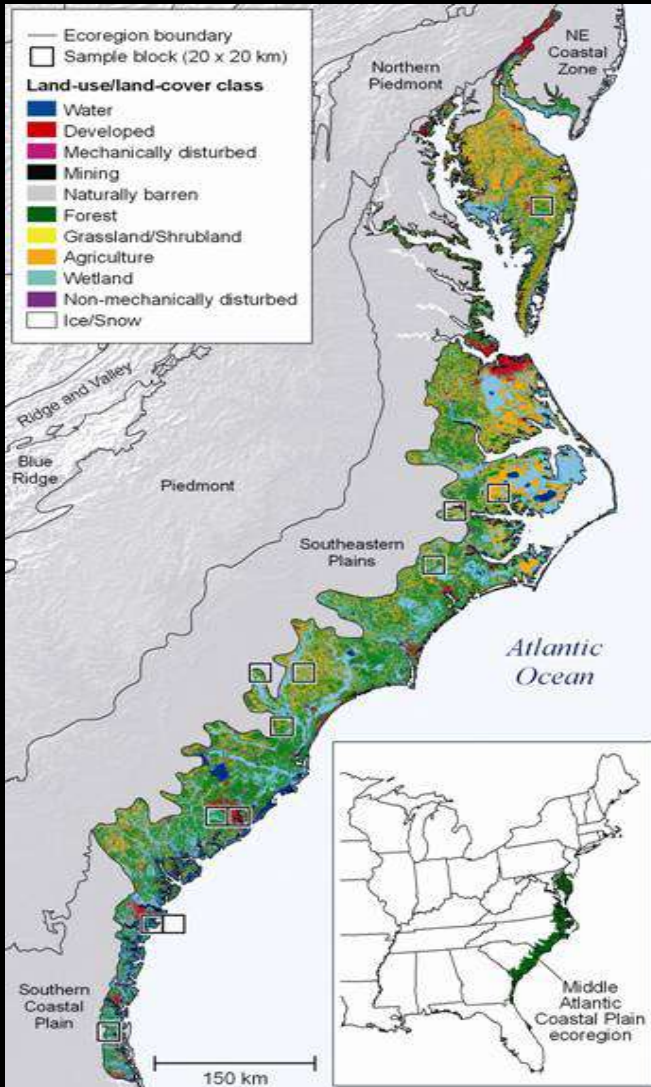
Physical Features of the United States

Geography

Where are some important physical features in the United States?

- Physical features are natural landforms and bodies of water on Earth's surface.
- Important land physical features in the United States include:
 - The Atlantic Coastal Plain
 - The Great Plains
 - The Continental Divide
 - The Great Basin
 - Death Valley

The Atlantic Coastal Plain

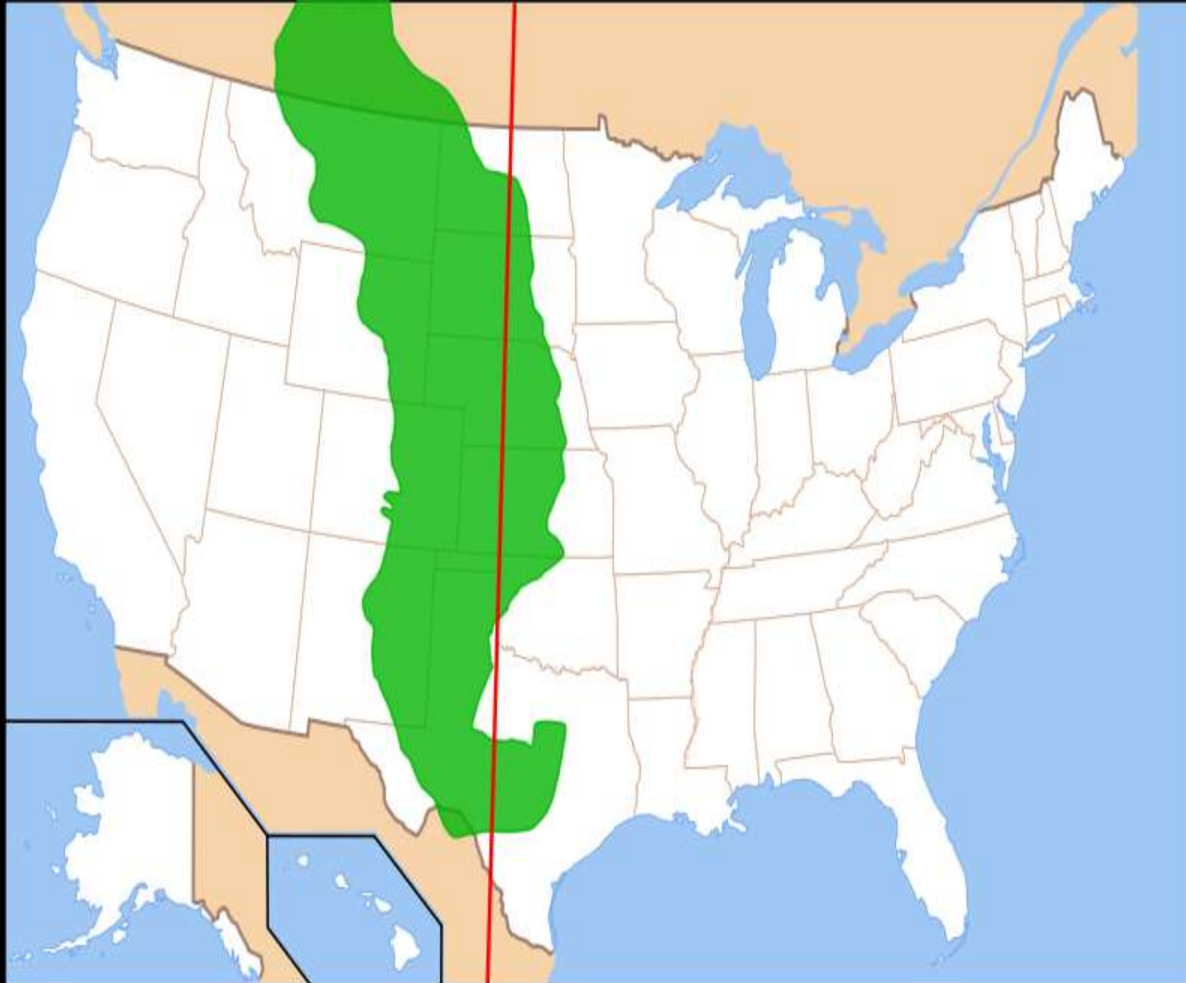


- Lowland area borders the Atlantic Ocean in the Eastern part of the United States.
- Has many excellent harbors.
- Many people live in this region.

The Great Plains



The Great Plains



The Great Plains

- The Interior plains are a flat area in the middle of the United States.
- The Great Plains are the western part of the interior plains.
- The Great Plains are east of the Rocky Mountains.
- The Great Plains consists of grasslands with no trees.

The Continental Divide



- High peaks of the rocky mountains form an imaginary line called the backbone of North America.
- On the eastern side of the Continental Divide, rivers flow toward the Atlantic Ocean or the Gulf of Mexico.
- On the Western side of the Continental Divide, rivers flow toward the Pacific Ocean.

The Great Basin



The Great Basin



- This area is west of the Rocky Mountains and east of the Sierra Nevada and Cascade mountain ranges.
- You will find isolated mountain ranges as well as Death Valley – the lowest point in North America!

Death Valley



**The Lowest Point in
North America!!**

Practice Time!

- Turn to Map Skill Builder on page 85 in your GA Experience Book.
- Read the Directions and Complete the page on attached handout.
- Turn to Enrichment page 86 in Your GA Experience Book and complete attached handout.

Where are some important physical features in the United States?

- Physical features are natural landforms and bodies of water on Earth's surface.
- Important bodies of water in the United States include:
 - The Gulf of Mexico
 - The St. Lawrence River
 - The Great Lakes

The Gulf of Mexico



The Gulf of Mexico



- This body of water is between the eastern coast of Mexico and the Western coast of Florida.
- It has warmer water than the Atlantic Ocean.

St. Lawrence River



St. Lawrence River

- This important river flows through northeastern Canada.
- It is a major transportation route for large ships bringing goods into Canada and the United States.

The Great Lakes



The Great Lakes



- These five lakes are located in the northern part of the United States between the U.S and Canada.
- They are the largest freshwater lakes in the world.

Practice Time!

- Turn to Map Skill Builder on page 87 and 88 in your GA Experience Book.
- Read the Directions and Complete the page on attached handouts.

Where are some important man-made features in the U.S?

- There are many things in the United States that have been created by man.
- These man-made features include:
 - Cities
 - Structures like a canal or a dam.
- Some major man-made features in the United States include:
 - New York City
 - Boston
 - Philadelphia
 - Erie Canal

New York City



New York City

- This the largest city in the United States.
- Located in New York State.
- It is the world center of finance and business.
- It is located on a large harbor that helped it to grow as a trade center.

Boston



Boston

- This city is the capital of Massachusetts.
- It is located on a harbor at the mouth of the Charles River.
- It is the largest city in the New England region.

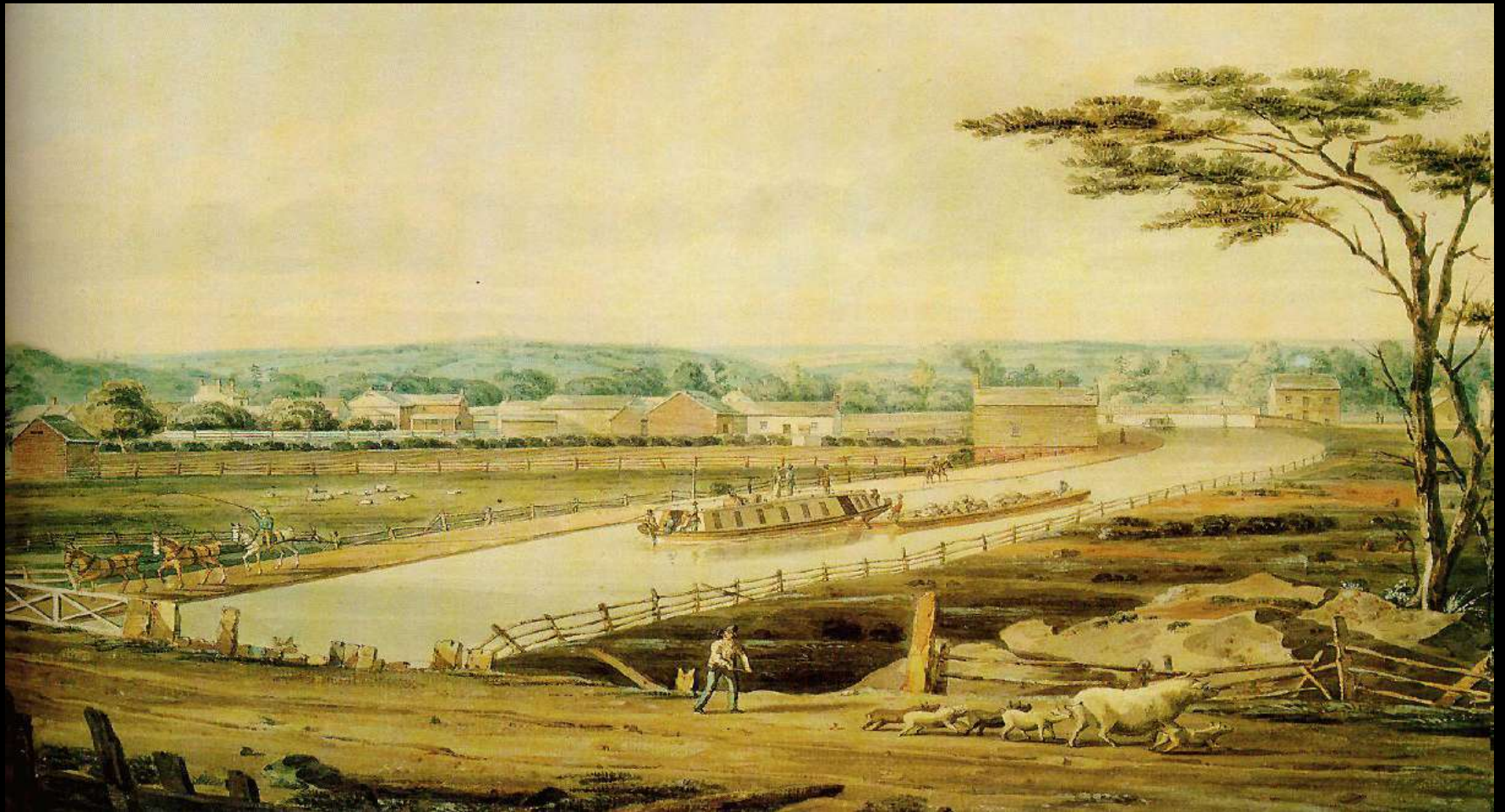
Philadelphia



Philadelphia

- This is the largest city in Pennsylvania.
- It is known as the “birthplace of a the nation.”
- Both the Declaration of Independence and the Constitution were written there.
- \

Erie Canal



The Erie Canal

- This man-made waterway links lake Erie with the Hudson River in New York.
- It was completed in 1825.
- It allows goods to be transported easily along the Great Lakes and then further west.
- It helped make New York City a major trade center.

Man Made Features

True or False?

- New York City is the largest city in the United States.
- New York City is not located on a harbor.
- Boston is the capital of Massachusetts.
- The largest city in the New England region is Providence, Rhode Island.
- Philadelphia is the capital of Pennsylvania.
- The Declaration of Independence was written in Philadelphia.

Practice Time!

- Turn to Map Skill Builder on page 90 in your GA Experience Book.
- Read the Directions and Complete the page on attached handout.

Review

