



**Florida Standards
Assessments (FSA)
Spring 2021**

ALTAMONTE ELEMENTARY

Agenda



ASSESSMENT &
ACCOUNTABILITY
SEMI-SOUL-EAST COUNTY PUBLIC SCHOOLS

- What are the Florida Standards Assessments?
 - Subjects and Grades Assessed
 - Test Schedule
 - Test Timing
 - Test Design and Test Item Types
 - State Science Assessment
 - Score Information
- How are FSA results used?
- Helpful Resources

Who participates?



ASSESSMENT &
ACCOUNTABILITY
SEMI-SOUL CITY PUBLIC SCHOOLS

- Per Florida Statute 1008.22, **all public-school students** are required to participate in the statewide assessment program.
 - All English Language Learners (ELLs) must participate in FSA assessments (including ELA). This includes ELLs who have been enrolled in school in the U.S. for less than one year.
 - Accommodations may be provided to students with a current Individual Education Plan (IEP) or Section 504 Plan.
 - Types of accommodations include:
 - Flexible Presentation
 - Flexible Responding
 - Flexible Scheduling
 - Flexible Setting
 - Assistive Devices & Tools
 - Large Print, One-Item-Per-Page, Braille

What subjects and grades are tested?

All tests will be paper-based and MUST be given at the school.

- **Grades 3-5 FSA English Language Arts (ELA) Reading**
- **Grades 4-5 FSA Writing**
 - A student must take both the Writing and Reading tests to receive an FSA ELA score.
- **Grades 3-5 FSA Mathematics**
- **Grade 5 Statewide Science**

What are the test windows?



ASSESSMENT &
ACCOUNTABILITY
SEASIDE-SOUTH BEACH PUBLIC SCHOOLS

Assessment	Grade Level	Test Date(s)
FSA Writing	Grades 4 and 5	April 6 (Tuesday) Make-ups: April 7 – 30 Make-ups: TBD (May)
FSA ELA	Grade 3	April 13 & 14 (Tuesday & Wednesday) Make-ups: April 14 – 30
FSA ELA	Grades 4 and 5	May 4 & 5 (Tuesday & Wednesday) Make-ups: May 5 – 18
FSA Math	Grades 3-5	May 11 & 12 (Tuesday & Wednesday) Make-ups: May 12 – 18
State Science	Grade 5	May 17 & 18 (Monday & Tuesday) Make-ups: May 18 – May 21

Testing windows were extended so that schools can test all students.

Are the tests timed? **YES!**

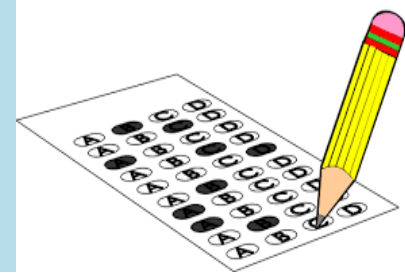


ASSESSMENT &
ACCOUNTABILITY
SEMI-SOUL COUNTY PUBLIC SCHOOLS

- **FSA Writing – Grades 4 and 5**
 - 120 minutes (1 session)
 - A **3-minute break** after 60 minutes of testing
- **FSA ELA Reading – Grades 3, 4, and 5**
- **FSA Mathematics – Grades 3, 4, and 5**
- **Statewide Science – Grade 5**
 - 160 minutes over two days
 - 80 minutes – Day 1 (short break after 40 minutes)
 - 80 minutes – Day 2 (short break after 40 minutes)



Paper-based Test Materials



- **Grade 3-5 ELA Reading & Mathematics**
 - Students will receive a Test and Answer Book
 - Students will work problems in their test and answer book
- **Grades 4 and 5 Writing**
 - Students will receive a Writing Planning Sheet and a Test and Answer Book
- **Grade 5 Science**
 - Students will receive a Test Book and an Answer Book/Sheet
- *Practice Tests have been developed by DOE. Students will have an opportunity to take a paper-based practice test at the school prior to the actual test.*
 - *Available on the FSA portal for public access.*
[Go to fsassessments.org](https://fsassessments.org) > Practice Tests

Test Design - Writing



- **FSA Writing (Grades 4 and 5)**
 - Writing component consists of one text-based constructed-response item
 - Students read a variety of texts and respond to a prompt
 - Prompt will ask for the student's opinion or ask the student to inform/explain
 - Students will draw upon the texts to provide evidence and information to support their claims or explanations
 - Writing Score (10 raw score points) – there are 3 domains:
 - Purpose, Focus, and Organization (4 points)
 - Evidence and Elaboration (4 points)
 - Conventions and Standard English (2 points)

Writing Passage & Prompt



Read the "Should Elementary School Students Switch Classes?" passage set.

Should Elementary School Students Switch Classes?

Source 1: Difficult Decisions for Schools

by Lillian James

1 If your school is like most elementary schools, you stay with the same teacher to learn subjects like math, reading, science, and social studies. You might switch classes for gym, music, or art. But when you get to middle school, you'll likely have a different teacher for each subject. Some people wonder whether students should switch classes earlier than in middle school.

Source 2: Deeper Learning Through Specialization

by Leon Samuels

6 Nearly every high school in the country has different departments for each subject. The math teacher has a math background. The science teacher has a deep understanding of earth science or physics. These teachers get to teach what they know and take pride in knowing it well.

Source 3: One Student, One Teacher

by Lucille Ruby

13 Young children need guidance, support, and stability. According to Donna Snyder, a professional development expert, this is provided by children's classroom teachers. By staying in one classroom with one teacher for the whole day, the youngest students can bond with their teachers. This connection with their teacher gives the young student confidence and creates a safe environment for learning.

Write an article for the school newspaper in which you give your opinion about whether students in your school should switch classes for different subjects. Use information from the passages in your article.

Manage your time carefully so that you can

- read the passages;
- plan your response;
- write your response; and
- revise and edit your response.

Be sure to include

- an introduction;
- support for your opinion using information from the passages; and
- a conclusion that is related to your opinion.

Your response should be in the form of a multiparagraph essay. Write your response in the space provided.

Grade 5 Sample

Writing Testing Tips



ASSESSMENT &
ACCOUNTABILITY
SEMI-SOUL CITY PUBLIC SCHOOLS

1. Read the prompt and determine whether it is asking for information/explanation, or an opinion/argument
2. Read the texts, looking for details to support information or opinion/argument
3. Use the Planning Sheet to organize thoughts and details
4. Write and edit response. **Make sure it contains:**
 - Clearly stated and strongly maintained idea or argument
 - Details from the passages to support idea or argument
 - Variety of sentence types and transitional strategies
 - Clear and effective expression and logical progression of ideas
 - Strong introduction and conclusion
 - Correct spelling and punctuation

Test Item Types – ELA Reading



ASSESSMENT &
ACCOUNTABILITY
SEMI-SOUL-EQUIPITY PUBLIC SCHOOLS

- **ELA Item Types**
 - Multiple Choice
 - Editing Task
 - Selectable Text
 - Multiselect
 - Evidence-Based Selected Response
 - Table Match
 - Multimedia

Test Item Types – ELA Reading



- **Multiple Choice**

- Students select one correct answer from four answer choices.

13. What does exception mean as it is used in paragraph 8?

- Ⓐ a regular traveler
- Ⓑ a unique individual
- Ⓒ a person who grows vegetables
- Ⓓ a person who does experiments

*Option B: **This answer is correct.** Unlike other people of his time, Jefferson sought out new and unfamiliar experiences.*

Test Item Types – ELA Reading



- **Multiple Choice**

2. Fill in the circle **before** the sentence from Passage 2 that shows why the man believes that his cheeses can bring themselves to the market.

14 (A) THERE was a man of Gotham who filled a sack with cheeses and started off for Nottingham market to sell them. (B) He carried the sack on his back, and when he became tired he sat down by the wayside to rest. (C) Thus he went on until he reached the summit of the last hill he had to climb before he came to Nottingham bridge.

15 (D) There he rested, and when he rose to continue his journey a cheese slipped out of the sack and rolled down the hill toward the bridge.

Option D: This answer is correct. This sentence suggests how the tired man can use the hill to his advantage to help roll the cheese toward the market.

Test Item Types – ELA Reading

- **Editing Task**
 - Students read a short passage with underlined words/phrases.
 - Students select the correct word/phrase that should replace the underlined word/phrase from a set of options.

Read the passage and then answer Numbers 5 through 7. There are three underlined words or phrases in the passage to show which word or phrase may be incorrect.

Tomorrow was the spelling bee. Sam was nervous, so he asked his mom to help him practice. If he worked hard, he knew he could learn all of the words.

After school, Sam and his mom began to practice spelling. Sam frowning when he heard the first word: "muscle." He tried to sound it out. He carefully wrote down "mussel." His mom smiled but shook her head. Sam had gotten it wrong.

His mom explained the error, but Sam was upset. He didn't want to practice anymore. But then his mom did something strange. She made a silly, funny face. Sam was surprised, and we started to laugh.

Now answer Numbers 5 through 7. Choose the correct word or phrase for each of the following.

5. If he worked hard, he knew he could learn all of the words.

- (A) word's
- (B) words'
- (C) wordes
- (D) correct as is

Option D: This answer is correct.
This option acknowledges the correct spelling of the underlined word "words."

6. Sam frowning when he heard the first word: "muscle."

- (A) frown
- (B) frowned
- (C) frowns
- (D) correct as is

Option B: This answer is correct.
This option indicates the correct verb tense "frowned" in context.

7. Sam was surprised, and we started to laugh.

- (A) she
- (B) he
- (C) I
- (D) correct as is

Option B: This answer is correct.
This option identifies the correct pronoun "he" to use in the sentence.

Test Item Types – ELA Reading

- **Selectable Text**
 - Two-part item:
 - Part A asks to make an analysis or inference &
 - Part B requires the student to use the text to support the answer in Part A.

Test Item Types – ELA Reading

12. This question has two parts. First, answer Part A. Then, answer Part B.

Part A

What is the main idea of Passage 1?

- Ⓐ Scientists want to learn more from Tyrannosaurus Sue’s skeleton.
- Ⓑ Susan Hendrickson accidentally discovered the fossilized bones of a *T. rex*.
- Ⓒ Susan Hendrickson’s discovery has allowed scientists to learn a lot about the *T. rex*.
- Ⓓ Scientists can now study Tyrannosaurus Sue’s bones because of how the skeleton is displayed.

Part B

Fill in the circles **before two** sentences from the passage that support your answer in Part A.

- 5 Paleontologists have learned so much from studying Sue’s bones.
- From the position of her eye sockets, they’ve learned that Sue had good depth perception. Ⓒ This helped her to be a fierce hunter who could tell how far away her next meal was. Ⓓ From the structure of her ears, they know that Sue and other *T. rexes* had great hearing, which also helped them to hunt. Ⓔ From the length of her snout, they’ve discovered that *T. rexes* had a sharp sense of smell—another quality that gave strength to these giant predators.
- 6 Ⓕ Scientists still have many questions and hope to learn even more from Sue. Ⓖ They would like to figure out whether Sue was male or female, to know whether she was warm- or cold-blooded, and to learn more about her daily activities. Ⓗ Thanks to Susan Hendrickson, Peter Larson, and the rest of the team from the Black Hills Institute, paleontologists all over the world will get the chance to continue to study Sue and try to find some of these answers.

Test Item Types – ELA Reading



- **Multi-Select**

- Students are directed to select a specific number of correct answers from among the options provided.

8. Which **two** sentences should be included in a summary of Passage 1?

- (A) Jefferson's garden was on a hilltop in Virginia.
- (B) Jefferson cooked most of his food by boiling it.
- (C) Jefferson wrote the Declaration of Independence.
- (D) Jefferson believed plants were important to society.
- (E) Jefferson kept detailed records of the vegetables he grew.

*Option D: **This answer is correct.** Jefferson's gardening efforts were undertaken because he believed so strongly that plants could benefit society.*

*Option E: **This answer is correct.** Jefferson's records of his plants are a prime example of his obsession with gardening, as well as a record of his efforts.*

Test Item Types – ELA Reading

- **Evidence-Based Selected Response**
 - Two-part item:
Part A is multiple choice and Part B may be either multiple choice or multiselect

2. This question has two parts. First, answer Part A. Then, answer Part B.

Part A

What is the theme of Passage 1?

- Nature can have a powerful effect on people.
- Children need friends who can keep secrets.
- People can find interesting things in forests.
- Children often benefit from being quiet.

Part B

How do Jess and Leslie's actions support the theme from Part A?

- They promise not to tell anyone about Terabithia.
- They are excited about seeing the forest every day.
- They decide not to talk when in the forest.
- They are determined to keep Terabithia sacred.

Part A

Option A: This answer is correct. The beginning of the passage describes how Jess felt energized because he was out in nature. The passage ends by describing how Jess and Leslie are profoundly influenced by the stillness of the pine forest and vow to keep the area sacred.

Part B

Option D: This answer is correct. The key theme of the passage is the influence of nature. A key example of the way this influence is felt is in the commitment Jess and Leslie make at the end of the passage to keep the forest sacred.

Test Item Types – ELA Reading



- **Table Match**

- Presents options in columns and rows. Options may include words, phrases, sentence, quotations, line/paragraph/passage numbers, or images.
- Student is directed to select a box that matches a correct option from a column with a correct option from a row.

5. Fill in **one** bubble in each row to show the order in which events happen in Passage 2.

	First	Next	Then	Finally
Eagle takes Fox to an island.	<input type="radio"/> A	<input checked="" type="radio"/>	<input type="radio"/> C	<input type="radio"/> D
Fox tricks Eagle into giving him her eggs.	<input checked="" type="radio"/>	<input type="radio"/> F	<input type="radio"/> G	<input type="radio"/> H
Fox makes up a song to trick the animals.	<input type="radio"/> I	<input type="radio"/> J	<input checked="" type="radio"/>	<input type="radio"/> L
The animals build a bridge for Fox to walk over.	<input type="radio"/> M	<input type="radio"/> N	<input type="radio"/> O	<input checked="" type="radio"/>

Option B: **This answer is correct.** This is the second action in a summary of events in the passage.

Option E: **This answer is correct.** This is the first action in a summary of events in the passage.

Option K: **This answer is correct.** This is the third action in a summary of events in the passage.

Option P: **This answer is correct.** This is the fourth and final action in a summary of events in the passage.



Test Item Types – ELA Reading

- **Multimedia**

- Enhanced content may include multimedia elements such as images, charts, graphics, timelines, etc.



14. Fill in the circles to show how each image contributes to ideas in the passage.

	Image 1	Image 2	Both Images
shows how different bones form Sue's skeleton	<input type="radio"/> A	<input type="radio"/> B	<input checked="" type="radio"/>
shows how complete Susan Hendrickson's discovery was	<input type="radio"/> D	<input checked="" type="radio"/>	<input type="radio"/> F
shows how Sue's skeleton could not be displayed all together	<input checked="" type="radio"/>	<input type="radio"/> H	<input type="radio"/> I

Option C: **This answer is correct.** Both images include detailed depictions of Sue's bones and how they are arranged.

Option E: **This answer is correct.** The second image shows a much more complete skeleton, including the fake head bones, which is explained in paragraph 3.

Option G: **This answer is correct.** This first image only shows Sue's actual head bones, which is supported by information included in paragraph 3.

Test Design - Math



MATH CONTENT CATEGORIES Grades 3-5 (CBT)

Approximate percentage of raw score points for each category.

Grade	Reporting Category	Percent of Test	Number of Items
3	Operations, Algebraic Thinking, and Numbers in Base Ten	48	60-64
	Numbers and Operations - Fractions	17	
	Measurement, Data, and Geometry	35	
4	Operations and Algebraic Thinking	21	60-64
	Numbers and Operations in Base Ten	21	
	Numbers and Operations – Fractions	25	
	Measurement, Data, and Geometry	33	
5	Operations, Algebraic Thinking, and Fractions	39	60-64
	Numbers and Operations in Base Ten	28	
	Measurement, Data, and Geometry	33	

MATH PERCENTAGE OF POINTS BY DEPTH OF KNOWLEDGE (DOK)* LEVEL Grades 3-5

DOK Level 1 (Low)	10-20%
DOK Level 2 (Mod)	60-80%
DOK Level 3 (High)	10-20%

**DOK refers to the complexity level of the cognitive process demanded by a test item rather than the difficulty of the item.
Level 1: Recall and Reproduction, Level 2: Skills and Concepts, and Level 3: Strategic Thinking*

❖ **Grades 3-5 Math Test Item Specifications**
<https://fsassessments.org/about-the-fsas.html>

*Approximately 6-10 items within the Reading and Language components listed above are field test items are included in the ranges above but are **not** included in the students' score.*

Test Item Types - Math



ASSESSMENT &
ACCOUNTABILITY
SEMI-SOUL COUNTY PUBLIC SCHOOLS

- **Math Item Types**
 - Multiple Choice
 - Equation Editor/Gridded Response
 - Editing Task Choice
 - Selectable Hot Text
 - Multiselect
 - Matching

Test Item Types - Math



- **Multiple Choice**

- Students select one correct answer from four answer choices.

14. Which equation is true?

- (A) $340 + 20 = 370 + 10$
- (B) $340 + 30 = 350 + 10$
- (C) $340 + 40 = 340 + 10$
- (D) $340 + 50 = 380 + 10$

Test Item Types - Math



ASSESSMENT &
ACCOUNTABILITY
SEASIDE-SOUTH COAST PUBLIC SCHOOLS

• Equation Editor/Gridded Response

Grade 3 Math

	/	/	/	/	/	/
0	0	0	0	0	0	0
1	1	1	1	1	1	1
2	2	2	2	2	2	2
3	3	3	3	3	3	3
4	4	4	4	4	4	4
5	5	5	5	5	5	5
6	6	6	6	6	6	6
7	7	7	7	7	7	7
8	8	8	8	8	8	8
9	9	9	9	9	9	9

Answer boxes

Fraction bar

Number bubbles

Grade 4 & 5 Math

	/	/	/	/	/	/
.
0	0	0	0	0	0	0
1	1	1	1	1	1	1
2	2	2	2	2	2	2
3	3	3	3	3	3	3
4	4	4	4	4	4	4
5	5	5	5	5	5	5
6	6	6	6	6	6	6
7	7	7	7	7	7	7
8	8	8	8	8	8	8
9	9	9	9	9	9	9

Answer boxes

Fraction bar

Decimal point

Number bubbles

1. Work the problem and find an answer.
2. Write your answer in the answer boxes at the top of the grid.
 - Write your answer with the first digit in the left answer box OR with the last digit in the right answer box.
 - Write only one digit or symbol in each answer box. Do NOT leave a blank answer box in the middle of an answer.
 - Be sure to write a decimal point or fraction bar in the answer box if it is a part of the answer.
3. Fill in a bubble under each box in which you wrote your answer.
 - Fill in one and ONLY one bubble for each answer box. Do NOT fill in a bubble under an unused answer box.
 - Fill in each bubble by making a solid mark that completely fills the circle.
 - You MUST fill in the bubbles accurately to receive credit for your answer.

Test Item Types - Math



- Equation Editor/Gridded Response (*continued*)

10. Daniella fills a container with soil by using a bowl. The bowl holds $\frac{3}{4}$ cup of soil. Daniella uses 13 full bowls of soil to fill the container.

How many cups of soil does the container hold?

			3	9	/	4
<input type="checkbox"/>	<input type="checkbox"/>	<input type="checkbox"/>	<input type="checkbox"/>	<input type="checkbox"/>	<input checked="" type="checkbox"/>	<input type="checkbox"/>
<input type="checkbox"/>	<input type="checkbox"/>	<input type="checkbox"/>	<input type="checkbox"/>	<input type="checkbox"/>	<input type="checkbox"/>	<input type="checkbox"/>
0	0	0	0	0	0	0
1	1	1	1	1	1	1
2	2	2	2	2	2	2
3	3	3	<input checked="" type="checkbox"/>	3	3	3
4	4	4	4	4	4	<input checked="" type="checkbox"/>
5	5	5	5	5	5	5
6	6	6	6	6	6	6
7	7	7	7	7	7	7
8	8	8	8	8	8	8
9	9	9	9	<input checked="" type="checkbox"/>	9	9

Other correct responses: any equivalent value

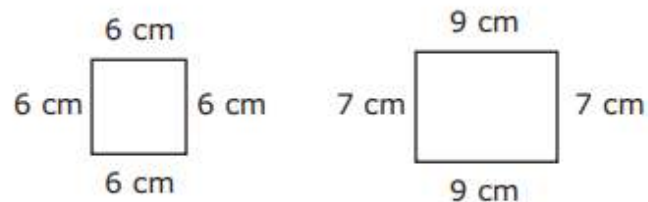
Test Item Types - Math



• Editing Task Choice

- Student fills in a bubble to indicate the correct number, word, or phrase that should complete a phrase or sentence.

9. The two figures shown are measured in centimeters (cm).



Complete the statement about the two figures. For each blank, fill in the circle **before** the word or phrase that is correct.

The shapes are both

<input type="radio"/>	A	squares
<input type="radio"/>	B	trapezoids
<input type="radio"/>	C	rectangles

because

<input type="radio"/>	A	all the angles in each shape are right angles.
<input type="radio"/>	B	all the sides of each shape have the same length.
<input type="radio"/>	C	all the sides of each shape are made of straight lines.

Test Item Types - Math



- **Selectable Hot Text**

- Excerpted sentences from the text are presented in this item type. The student fills in bubbles to indicate which sentences are correct.

5. Kaiya and Deangelo each create a number pattern.

- Kaiya's pattern uses the rule "Add 2" and has a first term of 6.
- Deangelo's pattern uses the rule "Add 4" and has a first term of 5.

Complete the statement that describes the relationship between the two number patterns. For each box, fill in the bubble before the word or phrase that is correct.

The two patterns (A) have (B) do not have terms in common because

Kaiya's pattern has (A) only odd (B) only even (C) both odd and even numbers and

Deangelo's pattern has (A) only odd (B) only even (C) both odd and even numbers.

Test Item Types - Math



- **Multi Select**

- Student is directed to **select all** of the correct answers from the options provided.

27. Select all the expressions that have a value of 32.

- (A) $304 \div 9$
- (B) $259 \div 8$
- (C) $224 \div 7$
- (D) $160 \div 5$
- (E) $100 \div 3$

Test Item Types - MATH



- **Table Match**

- Presents options in columns and rows.
- Student is directed to select a box that matches a correct option from a column with a correct option from a row.
- Typically, there is only one correct option per row or column, though the number of correct answers may vary.

15. For each attribute, fill in circles to select all the shapes that **always** have that attribute.

	Rectangle	Rhombus	Square	Parallelogram
4 equal-length sides	<input type="radio"/> A	<input checked="" type="radio"/>	<input checked="" type="radio"/>	<input type="radio"/> D
4 right angles	<input checked="" type="radio"/>	<input type="radio"/> F	<input checked="" type="radio"/>	<input type="radio"/> H
Exactly one pair of parallel sides	<input type="radio"/> I	<input type="radio"/> J	<input type="radio"/> K	<input type="radio"/> L
Exactly two pairs of parallel sides	<input checked="" type="radio"/>	<input checked="" type="radio"/>	<input checked="" type="radio"/>	<input checked="" type="radio"/>

Reference Sheets



- Grades 4 & 5 Math will receive reference sheets
 - Grade 4 some formulas are provided on the reference sheet
 - Grade 5 some formulas may be included with the test item
- Grade 3 Math does not receive a reference sheet

Grade 4 FSA Mathematics Reference Sheet

Customary Conversions

1 foot = 12 inches
1 yard = 3 feet
1 mile = 5,280 feet
1 mile = 1,760 yards

1 cup = 8 fluid ounces
1 pint = 2 cups
1 quart = 2 pints
1 gallon = 4 quarts

1 pound = 16 ounces
1 ton = 2,000 pounds

Metric Conversions

1 meter = 100 centimeters
1 meter = 1000 millimeters
1 kilometer = 1000 meters

1 liter = 1000 milliliters

1 gram = 1000 milligrams
1 kilogram = 1000 grams

Time Conversions

1 minute = 60 seconds
1 hour = 60 minutes
1 day = 24 hours
1 year = 365 days
1 year = 52 weeks

Formulas

$$A = lw$$

$$P = 2l + 2w$$

Grade 5 FSA Mathematics Reference Sheet

Customary Conversions

1 foot = 12 inches
1 yard = 3 feet
1 mile = 5,280 feet
1 mile = 1,760 yards

1 cup = 8 fluid ounces
1 pint = 2 cups
1 quart = 2 pints
1 gallon = 4 quarts

1 pound = 16 ounces
1 ton = 2,000 pounds

Metric Conversions

1 meter = 100 centimeters
1 meter = 1000 millimeters
1 kilometer = 1000 meters

1 liter = 1000 milliliters

1 gram = 1000 milligrams
1 kilogram = 1000 grams

Time Conversions

1 minute = 60 seconds
1 hour = 60 minutes
1 day = 24 hours
1 year = 365 days
1 year = 52 weeks

Test Design - Science



- **Grade 5** students will take the **Science** assessment based on the Florida Next Generation Sunshine State Standards.

SCIENCE CONTENT CATEGORIES

Grade 5

Approximate percentage of raw score points for each category.

Grade	Reporting Category	Percent of Test	Number of Items
5	Nature of Science	17	60-66
	Earth and Space Science	29	
	Physical Science	29	
	Life Science	25	

ELA SCIENCE

PERCENTAGE OF POINTS BY DEPTH OF KNOWLEDGE (DOK)* LEVEL Grades 5

DOK Level 1 (Low)	10-20%
DOK Level 2 (Mod)	60-80%
DOK Level 3 (High)	10-20%

**DOK refers to the complexity level of the cognitive process demanded by a test item rather than the difficulty of the item.*

Level 1: Recall and Reproduction, Level 2: Skills and Concepts, and Level 3: Strategic Thinking

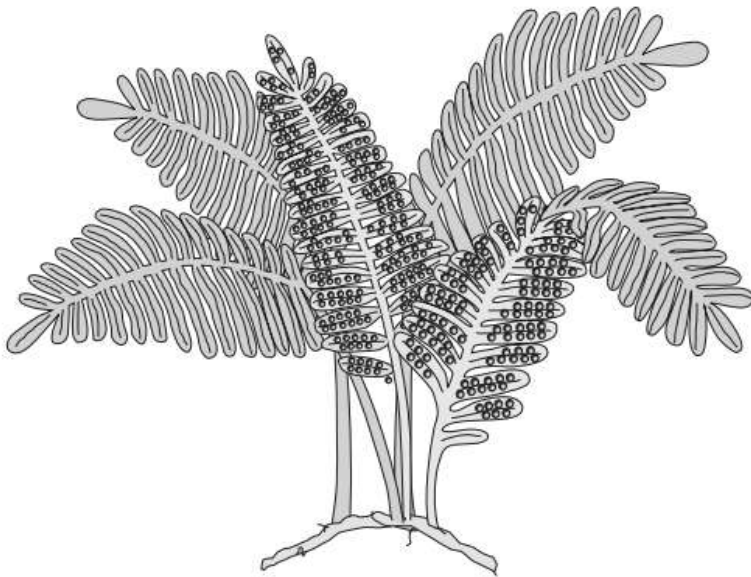
Test Design - Science



ASSESSMENT &
ACCOUNTABILITY
SEW ROLL COUNTY PUBLIC SCHOOLS

- All items on the Grade 5 Science test are multiple choice.

- 6 Plants are classified according to their structures. The plant pictured below reproduces without seeds and has simple tubes for transporting water.



In which group of plants would this plant be classified?

- F. spore-producing plants with many leaves
- G. plants that produce fruit on their leaves
- H. plants that carry seeds on their leaves
- I. flowering plants with many leaves

- 7 Erosion and weathering can both cause changes to the surface of Earth. Which of the following happens **only** because of erosion and NOT because of weathering?

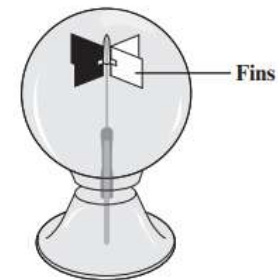
- A. Rocks form deep underground.
- B. Rocks become smooth and round.
- C. Rocks are broken apart into small pieces.
- D. Rocks are moved from one place to another.

Test Design - Science



- Students will often need to read text, pictures, charts, and or graphs prior to answering questions.

10 A radiometer is a device with fins that spin when light energy strikes them. A picture of a radiometer is shown below. As part of an experiment, a light source was placed 50 centimeters (cm) from a radiometer. The light source gave off four different-colored lights for 30 seconds (s) each. After each color of light was turned off, the amount of time the fins on the radiometer spun was recorded. The results are shown in the table below.



Radiometer

RADIOMETER DATA

Color of Light	Spinning Time (s)
Red	46
Green	55
Blue	72
White	75

Which color of light provided the **greatest** amount of light energy according to the data in the table?

- F. red
- G. green
- H. blue
- I. white

Electronic Devices



ASSESSMENT &
ACCOUNTABILITY
SEMI-SOUL SECURITY PUBLIC SCHOOLS

- **No electronic devices permitted during testing**
 - Students **CANNOT** have any electronic device (e.g., cell phones/smartphones, smartwatches, cameras, etc.) on them **OR** within arm's reach even if they do not use them
 - **Cause for immediate invalidation of test.**

N 



Helping Your Child



ASSESSMENT &
ACCOUNTABILITY
SEW ROLL COUNTRY PUBLIC SCHOOLS

- **Test Preparation**

- Help your child to realize that it is important to do their best every day, as well as on the FSA.
- Review class and homework with your child.
- Ensure that your child participates in the practice tests so that he/she becomes familiar with the items.
- Help your child get a good night's sleep and eat a nutritious breakfast.
- Work with your child to help them learn how to lower anxiety/stress about the test.

Helping Your Child



ASSESSMENT &
ACCOUNTABILITY
SEW ROLL COUNTRY PUBLIC SCHOOLS



Use Technology.



Read together EVERY night.



Check the online gradebook.



Ask your child questions about what he/she is learning.



Make sure your child is using TEXT EVIDENCE.



Review math facts.



Review your child's homework.

Grade 3 FSA ELA / Good Cause



- **Grade 3 FSA ELA Scores**

- Per F.S. 1008.22(5)(b), to be promoted to grade 4, a student **must score a Level 2 or higher on the Grade 3 FSA ELA Reading assessment.**
- Students who score a Level 1 on ELA may qualify for a good cause exemption for promotion to Grade 4 per Florida State Board Rule 6A-1.094221(1)(A), F.A.C.

- **‘Good Cause’ Exemptions**

1. I-Ready: 50% or higher (score of 534+)
 - Spring Testing - Diagnostic 4: May 10-21
 - Summer Testing - June 21-24
 - Start of School Year 2021-22 - Diagnostic 1: Aug/Sept
2. SAT10: 45% or higher (Summer Testing Only – June 22-24)
3. Student Portfolio – starts in February
(an organized collection of evidence of the student’s mastery of the ELA standards that are assessed on the G3 FSA ELA test)

ALL decisions are made on an individual/student basis

FSA Scores

- Students will receive a Scaled Score (SS), Achievement Level, Percentile Rank, and Raw Scores.
- Grade 3 ELA scores will be released by **June 30**.
- Grades 4-5 ELA and Grades 3-5 Math scores will be released by **July 30**.
 - Schools will determine how score reports will go home to parents.

FSA scores will arrive later due to the testing windows being extended.

FSA Portal



ASSESSMENT &
ACCOUNTABILITY
FLORIDA DEPARTMENT OF EDUCATION

- FSA Portal: www.FSAssessments.org
 - The FSA Portal was developed as a communication tool by the Florida Department of Education and contains all published information regarding FSA assessments, and released Practice Tests
 - Access to the portal and information is public.

The screenshot shows the Florida Standards Assessments (FSA) Portal homepage. The header features the Florida Standards Assessments logo and a palm frond image. The main content area is divided into several sections:

- Students & Families:** A button with a graduation cap icon.
- Test Administration:** A button with a document and checkmark icon.
- Technology Resources:** A button with a computer monitor icon.
- About the FSAs:** A button with a pencil and information icon.
- Welcome to the FSA Portal:** A section with a heading and a paragraph: "This portal is your source for information about the Florida Standards Assessments. Florida's K-12 assessment system measures students' achievement of Florida's education standards, which were developed and implemented to ensure that all students graduate from high school ready for success in college, career, and life. Assessment supports instruction and student learning, and test results help Florida's educational leadership and stakeholders determine whether the goals of the education system are being met. For information about FCAT 2.0 or NGSSS EOC Assessments, please visit <http://www.fldoe.org/accountability/assessments/k-12-student-assessment>. For more information about Florida standards, course
- Administer the FSA:** A button with a person icon.
- Secure Browser:** A button with a shield and checkmark icon.
- FSA Resources:** A button with a book icon.
- Practice Tests:** A button with a gear icon.

Helpful Resources



ASSESSMENT &
ACCOUNTABILITY
SEMI-SOUL CITY PUBLIC SCHOOLS

- FSA Portal
www.FSAssessments.org
- **Florida State Standards (Cpalms)**
<https://www.floridastudents.org/>
- Florida Department of Education Web Site
<http://www.fldoe.org>
- School Accountability Reports
<http://schoolgrades.fldoe.org>
- SCPS Assessment & Accountability Web Site
<https://www.scps.k12.fl.us/district/departments/assessment-accountability/>

Contact Information

School Test Coordinator

School Administration Manager: Jason Hawley 407.746.2902

Assessment & Accountability Team

Director: Kelly Thompson 407.320.0268 (KellyThompson@scps.k12.fl.us)

ES Lead: Daphne Csonka 407.320.0270 (Daphne_Csonka@scps.k12.fl.us)

MS Lead: Joyce Moore 407.320.0021 (Joyce_Moore@scps.k12.fl.us)

HS Lead: Sara Borosky 407.320.0269 (Sara_Borosky@scps.k12.fl.us)

Test Preparation



ASSESSMENT &
ACCOUNTABILITY
SEW HOLL COUNTRY PUBLIC SCHOOLS

- Help your child to realize that it is important to do their best every day, as well as on the FSA.
- Read for 30 minutes each night and practice math fact fluency.
- Help your child practice the skills they are learning in real-life situations so that the skills have meaning beyond the tests and the classroom.
- Help your child get a good night's sleep and eat a nutritious breakfast. Just a reminder- All students get free breakfast in our Red Apple Dining cafeteria.
- Work with your child to help them learn how to lower anxiety/stress about the test

Testing Strategies



ASSESSMENT &
ACCOUNTABILITY
SEMI-SOUL SECURITY PUBLIC SCHOOLS

- Read each passage and question carefully.
- Go back to the text to find your answers.
- Look for clue words in the question to help locate your answer.
- (In paragraph 2, Select all that apply, Part A and Part B questions)
- Managing time wisely by answering questions you know how to solve quickly.
- Save the challenging problems for the end
- Use the student workbook to show your work.
- Utilize math and reading strategies that have been taught.
- Check that each problem has been correctly bubbled or gridded.
- Be sure you've answered all questions - Don't leave any blank!

Frequently Asked Questions



ASSESSMENT &
ACCOUNTABILITY
SEMINOLE COUNTY PUBLIC SCHOOLS

- Will virtual students (SCVS, Seminole Connect, Save My Seat) have to take the FSA assessments at school?
 - Yes, per Florida Statute 1008.22, **all public-school students** are required to participate in the statewide assessment program.
 - Schools will work with parents to schedule virtual (SCVS, Seminole Connect, and Save My Seat) students to come on campus to take the assessments associated to their grade level (ELA, Reading, and/or Science).
 - Schools will follow all health and safety policies (e.g., social distancing, masks, cleaning)
- (see slides 5-7)

Frequently Asked Questions



ASSESSMENT &
ACCOUNTABILITY
SEMI-SOUL COUNTY PUBLIC SCHOOLS

- What happens if the student does not pass the FSA? Can he retake the FSA? Will my student be able to go to the next grade?
 - Students do not have the option to retake the FSA.
 - Only Grade 3 students must score a Level 2 or higher on the Grade 3 FSA ELA Reading (not the Math) assessment in order to be promoted to Grade 4 per F.S. 1008.22(5)(b).
 - Grade 4 and Grade 5 students do not have to score a level 2 or higher on their assessments.
 - All student scores are used to make instructional decisions for the following school year.
 - There are many factors when determining if a student should be retained.

Frequently Asked Questions



ASSESSMENT &
ACCOUNTABILITY
SEMI-SOUL-EASTERN PUBLIC SCHOOLS

- Is FSA only for one day or multiple days?
 - See slides 7 and 8 for the test schedule and times
- Will previous year's material be on the current FSA test?
To clarify, will grade 3 questions be on the grade 4 test due to the fact grade 3 students did not take the FSA last school year?
 - No, students are assessed on the standards associated to their grade level. The test item specifications and test design summaries provide the standards covered on each test.
 - <https://fsassessments.org/florida-statewide-assessment-program/about-the-fsas.html>

Frequently Asked Questions



ASSESSMENT &
ACCOUNTABILITY
SEASIDE-SOUTH COAST PUBLIC SCHOOLS

- What accommodations will be provided to IEP or 504 students during the FSA testing (e.g., additional time, setting)?
 - Students will receive their allowable accommodations that are listed on their IEP or 504 plan and students should be currently using the accommodations in the classroom/online.
(see slide 5)
- Can a student take a different grade level test? For example, my student is a grade 4 student but is taking a Grade 5 Math class. Will my student take the Grade 4 Math or the Grade 5 Math test?
 - Students will take the assessment associated to the course they are taking.
In this situation, the grade 4 student will take the Grade 5 FSA Math and the Grade 4 ELA Reading and Writing tests.

Frequently Asked Questions



ASSESSMENT &
ACCOUNTABILITY
SEMI-SOUL-EASTERN PUBLIC SCHOOLS

- How many practice tests would we have before the FSA?
 - Students participate in the unit assessments which have FSA-like items throughout the school year.
 - The FDOE practice tests contain sample items for specific grade level/subject tests. The purpose of the practice test is to orient students to the possible types of test items that may appear on the FSA paper-based assessments.
 - <https://fsassessments.org/students-and-families/practice-tests/paper-based-materials/>

Questions and Answers



ASSESSMENT &
ACCOUNTABILITY
SEMI-SOUL COUNTY PUBLIC SCHOOLS

Q & A

You have

Questions

We have

Answers