

Florida Standards Assessment



Parent Night

PALM VALLEY ACADEMY

March 30th, 2022

Agenda

- What are the Florida Standards Assessments?
 - Subjects and Grades Assessed
 - Test Schedule
 - Test Timing
 - Test Design and Test Item Types
- How are FSA results used?
- Helpful Resources

What are the Florida Standards Assessments?

“The F.S.A.”

- A test that was designed to serve Florida students by measuring education gains and progress
- Measures student performance based on the Florida State Standards
- Information from the assessment is used to drive student instruction and course recommendations (Middle School)
- This will be the final year of FSA, HOWEVER, we FULLY expect some sort of assessment/s to replace it

Subjects and Grades Assessed

2021-2022 Paper - Based Assessments

- Grade 3 ELA Reading
- Grades 4-6 ELA (Writing (10%) and Reading)
- Grades 3-6 Mathematics
- Grades 5 and 8 Science

2021-2022 Computer - Based Assessments

- Grades 7-8 ELA (Writing and Reading)
- Grades 7-8 Mathematics

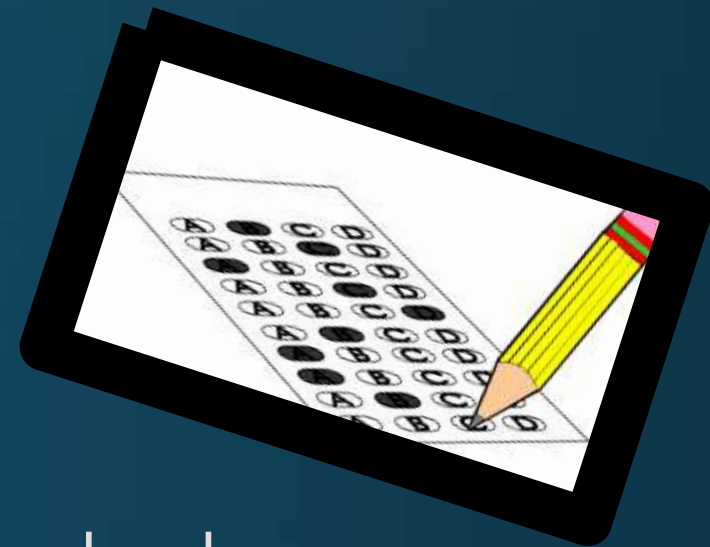
Testing Windows

English Language Arts (ELA), Mathematics, and Science	
Dates	Assessment
April 4–15, 2022	Grades 4–10 ELA Writing Grade 3 ELA Reading
May 2–13, 2022	Grades 4–6 ELA Reading Grades 3–6 Mathematics
May 2–27, 2022	Grades 7–10 ELA Reading Grades 7 & 8 Mathematics
May 9–20, 2022	Grades 5 & 8 Science

Paper-Based Test Materials

➤ Grade 3-6 ELA & Mathematics

- Students will receive a Test and Answer Book
- Students will work problems in their test and answer book.



Practice Tests have been developed by DOE. Students will have an opportunity to take the practice test at the school prior to the actual test. Also available on the FSA portal for public access.

Go to fsassessments.org > Practice Tests

ELA Reading



- ELA Reading assessments contain 56-66 items
- ELA Reading sessions are administered over two days.

TEST SESSIONS:

- Grade 3-5: Two 80-minute sessions
- Grade 6-8: Two 85-minute sessions

Each day a short break is given after 40 minutes of testing

ELA Concepts Tested

Grade 3

- **Key Ideas and Details**

Students read closely to comprehend, analyze, and summarize essential information and concepts, referencing evidence from the text to support inferences and conclusions.

- **Craft Structure**

Students interpret literal and nonliteral meanings of words/phrases. They determine how text structures and text features impact meaning. They distinguish personal point of view from that of the narrator or author.

- **Integration of Knowledge and Ideas**

Students integrate and analyze content presented in diverse media formats. They analyze treatment of similar themes or topics.

- **Language and Editing**

Students demonstrate command of the conventions of standard English grammar, usage, capitalization, punctuation, and spelling. Items may ask the student to evaluate and correct errors which focus on grammar and usage or capitalization, punctuation, and spelling. Items should assess on-grade-level errors; however, once a language standard is introduced, grade-appropriate items may be written to assess continued mastery of standard conventions of English.

Test Design - ELA

ELA-READING CONTENT CATEGORIES Grades 3-5

Approximate percentage of raw score points for each category

Reading Text Types	Literature - 50% Informational - 50%
Key Ideas and Details	15-25%
Craft and Structure	25-35%
Integration of Knowledge and Ideas	20-30%
Language and Editing	15-25%
Text-Based Writing (Grades 4-5)	Determined each year
Total Number of Items	56-60

ELA PERCENTAGE OF POINTS BY DEPTH OF KNOWLEDGE (DOK)* LEVEL Grades 3-5

DOK Level 1 (Low)	10-20%
DOK Level 2 (Mod)	60-80%
DOK Level 3 (High)	10-20%
Note: Text-based Writing (G4-5) component is a DOK Level 3 task.	
<i>*DOK refers to the complexity level of the cognitive process demanded by a test item rather than the difficulty of the item. Level 1: Recall and Reproduction, Level 2: Skills and Concepts, and Level 3: Strategic Thinking</i>	

Approximately 6-10 items within the Reading and Language components listed above are field test items are included in the ranges above but are **not** included in the students' score.

Test Item Types

ELA Item Types

- Multiple Choice
- 25-50% of test is composed of enhanced items which include...
 - Multi-Select
 - Selectable Text
 - Multi-Part
 - Table Match
 - Editing Task Choice

FSA QUESTION TYPES

Paper-Based Item Rendering—Multi-select

MS items will always direct the student to the number of correct answers.

7. Which **two** sentences should be included in a summary of Passage 1?

- Ⓐ Jefferson's garden was on a hilltop in Virginia.
- Ⓑ Jefferson cooked most of his food by boiling it.
- Ⓒ Jefferson wrote the Declaration of Independence.
- Ⓓ Jefferson believed plants were important to society.
- Ⓔ Jefferson kept detailed records of the vegetables he grew.

FSA QUESTION TYPES

Paper-Based Item Rendering—Selectable Text

1. Fill in the circle **before** the sentence from Passage 2 that shows why the man believes that his cheeses can bring themselves to the market.

14 Ⓐ THERE was a man of Gotham who filled a sack with cheeses and started off for Nottingham market to sell them. Ⓑ He carried the sack on his back, and when he became tired he sat down by the wayside to rest. Ⓒ Thus he went on until he reached the summit of the last hill he had to climb before he came to Nottingham bridge.

15 Ⓓ There he rested, and when he rose to continue his journey a cheese slipped out of the sack and rolled down the hill toward the bridge.

FSA QUESTION TYPES

Paper-Based Item—Table Match

FSA ELA Reading Practice Test Questions

7. Fill in the circles to choose whether each sentence describes Passage 1, Passage 2, or both passages.

	Passage 1	Passage 2	Both Passages
Greed is punished.	(A)	(B)	(C)
Trickery is rewarded.	(D)	(E)	(F)
Food influences characters.	(G)	(H)	(I)

FSA QUESTION TYPES

PBT Editing Task with Choices

Passage and items will be on facing pages.

Read the passage and then answer Numbers 17 through 19. There are three underlined words or phrases in the passage to show which word or phrase may be incorrect.

We squint when the sun is in our eyes because the bright sunlight hurts. This is how our brain protected our eyes. Protecting our eyes is very important during an eclipse. An eclipse happens when an object moves between you and the object you are viewing.

A solar eclipse happens when the Moon moves between Earth and the Sun. The Moon blocks our view of the Sun. Viewing a solar eclipse can be exciting. It is not an everyday event. But can it be viewed safely? Yes; it can.

The safest and easiest way to view a solar eclipse is to build a pinhole camera. A pinhole camera lets you see what happens during a solar eclipse without looking directly at the Sun. It is a very valuable tool because it lets you turn your back to the Sun and protect your eyes.

Now answer Numbers 17 through 19. Choose the correct word or phrase for each of the following.

17. This is how our brain protected our eyes.

- (A) has protected
- (B) protects
- (C) will protect
- (D) correct as is

18. Yes; it can.

- (A) Yes,
- (B) Yes:
- (C) Yes
- (D) correct as is

19. It is a very valuable tool because it lets you turn your back to the Sun and protect your eyes.

- (A) let
- (B) is letting
- (C) has let
- (D) correct as is

Mathematics



- Math assessments contain 56-66 items
- Math sessions are administered over two days.

TEST SESSIONS:

- Grade 3-5: Two 80-minute sessions
- Grade 6-8: Three 60-minute sessions*

*Schools are required to administer Session 1 on day one and Sessions 2 and 3 on day two

Math Concepts Tested

Grade 3

- **Operations, Algebraic Thinking, and Numbers in Base Ten**

Students represent and solve problems involving multiplication and division. They understand properties of multiplication and the relationship between multiplication and division. They multiply and divide within 100. They solve problems involving the four operations, and identify and explain patterns in arithmetic. They use place value understanding and properties of operations to perform multi-digit arithmetic.

- **Numbers and Operations—Fractions**

Students develop understanding of fractions as numbers.

- **Measurement, Data, and Geometry**

Students solve problems involving measurement and estimation of intervals of time, liquid volumes, and masses of objects. They represent and interpret data. They understand concepts of area and relate area to multiplication and addition. They recognize perimeter as an attribute of plane figures and distinguish between linear and area measures. They reason with shapes and their attributes.

Table 7: Grade 3 FSA Mathematics Percentage of Points by Reporting Category

Operations, Algebraic Thinking, and Numbers in Base Ten	Numbers and Operations—Fractions	Measurement, Data, and Geometry
48%	17%	35%

Test Design - MATH

MATH CONTENT CATEGORIES

Grades 3-5

Approximate percentage of raw score points for each category

Grade	Reporting Category	Percent of Test	Number of Items
3	Operations, Algebraic Thinking, and Numbers in Base Ten	48	60-64
	Numbers and Operations - Fractions	17	
	Measurement, Data, and Geometry	35	

MATH

PERCENTAGE OF POINTS BY DEPTH OF KNOWLEDGE (DOK)* LEVEL Grades 3-5

DOK Level 1 (Low)	10-20%
DOK Level 2 (Mod)	60-80%
DOK Level 3 (High)	10-20%

**DOK refers to the complexity level of the cognitive process demanded by a test item rather than the difficulty of the item. Level 1: Recall and Reproduction, Level 2: Skills and Concepts, and Level 3: Strategic Thinking*

Test Item Types

MATH Item Types

- Multiple Choice
- Multi-Select
- Response Grid
- Table Match
- Editing Task Choice

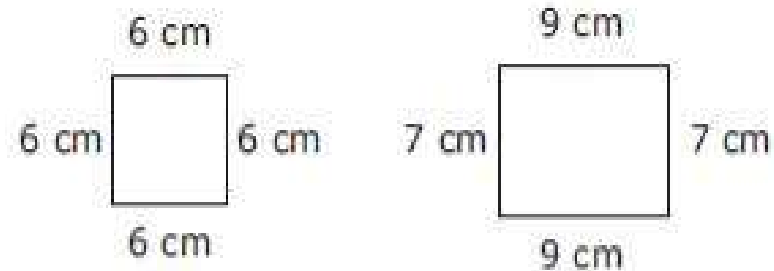
FSA QUESTION TYPES

Math

EDITING TASK CHOICE

Students will respond by choosing the correct word or phrase to fill in each blank in a sentence or sentences. For each answer choice box, fill in the bubble before the correct word or phrase. Be sure to respond to each of the editing task boxes in the item.

The two figures shown are measured in centimeters (cm).



Complete the statement about the two figures. For each blank, fill in the circle **before** the word or phrase that is correct.

The shapes are both

- (A) squares
- (B) trapezoids
- (C) rectangles

because

- (A) all the angles in each shape are right angles.
- (B) all the sides of each shape have the same length.
- (C) all the sides of each shape are made of straight lines.

FSA QUESTION TYPES

Math

GRIDDED RESPONSES

	/	/	/	/	/	
.
0	0	0	0	0	0	0
1	1	1	1	1	1	1
2	2	2	2	2	2	2
3	3	3	3	3	3	3
4	4	4	4	4	4	4
5	5	5	5	5	5	5
6	6	6	6	6	6	6
7	7	7	7	7	7	7
8	8	8	8	8	8	8
9	9	9	9	9	9	9

Answer boxes

Fraction bar

Decimal point

Number bubbles

Do NOT write a mixed number, such as $13\frac{1}{4}$, in the answer boxes.

Change the mixed number to an equivalent fraction, such as $\frac{53}{4}$, or to an equivalent decimal, such as 13.25. Do not try to fill in $13\frac{1}{4}$, as it would be

read as $\frac{131}{4}$ and would be counted wrong.

CORRECT

5	3	/	4			
	/	•	/	/	/	
.
0	0	0	0	0	0	0
1	1	1	1	1	1	1
2	2	2	2	2	2	2
3	•	3	3	3	3	3
4	4	4	•	4	4	4
•	5	5	5	5	5	5
6	6	6	6	6	6	6
7	7	7	7	7	7	7
8	8	8	8	8	8	8
9	9	9	9	9	9	9

OR

1	3	.	2	5		
	/	/	/	/	/	
.	.	•
0	0	0	0	0	0	0
•	1	1	1	1	1	1
2	2	•	2	2	2	2
3	•	3	3	3	3	3
4	4	4	4	4	4	4
5	5	5	•	5	5	5
6	6	6	6	6	6	6
7	7	7	7	7	7	7
8	8	8	8	8	8	8
9	9	9	9	9	9	9

INCORRECT

1	3	1	/	4		
	/	•	/	/	/	
.
0	0	0	0	0	0	0
•	1	•	1	1	1	1
2	2	2	2	2	2	2
3	•	3	3	3	3	3
4	4	4	•	4	4	4
5	5	5	5	•	5	5
6	6	6	6	6	6	6
7	7	7	7	7	7	7
8	8	8	8	8	8	8
9	9	9	9	9	9	9

More Math Formats

9. Fill in circles to match the value of each expression to the correct description.

	Less than 3,827	Equal to 3,827	Greater than 3,827
$3,827 \times \frac{5}{8}$	(A)	(B)	(C)
$3,827 \times \frac{8}{3}$	(D)	(E)	(F)
$3,827 \times \frac{8}{8}$	(G)	(H)	(I)
$3,827 \times \frac{3}{5}$	(J)	(K)	(L)

19. The location of point M on the coordinate plane is $(2, 7)$.

Select numbers to describe point M on the coordinate plane. For each blank, fill in the circle **before** the number that is correct.

Point M is

(A) 0
 (B) 2
 (C) 5
 (D) 7
 (E) 9

 units away from the origin in the direction of the x-axis.

Point M is

(A) 0
 (B) 2
 (C) 5
 (D) 7
 (E) 9

 units away from the origin in the direction of the y-axis.

5. Kaiya and Deangelo each create a number pattern.

- Kaiya's pattern uses the rule "Add 2" and has a first term of 6.
- Deangelo's pattern uses the rule "Add 4" and has a first term of 5.

Complete the statement that describes the relationship between the two number patterns. For each blank, fill in the circle **before** the word or phrase that is correct.

The two patterns

(A) have
 (B) do not have

 terms in common because

Kaiya's pattern has

(A) only odd
 (B) only even
 (C) both odd and even

 numbers and

Deangelo's pattern has

(A) only odd
 (B) only even
 (C) both odd and even

 numbers.



Grade 3 ELA / Good Cause

➤ Grade 3 ELA Scores

- Per F.S. 1008.22(5)(b), to be promoted to grade 4, a student **must score a Level 2 or higher on the Grade 3 ELA.**
- Students who score a Level 1 on ELA may qualify for a good cause exemption for promotion to Grade 4 per Florida State Board Rule 6A-1.094221(1)(A), F.A.C.

➤ 'Good Cause' Exemptions

- I-Ready: 50% or higher (score of **535+ on Diagnostic 3**)
 - Summer—score of 535+
 - August (Diagnostic 1)—score of 535+
- Passing score on the SAT 10 given at the end of *Summer Learning Camp*
- Student portfolio of 3rd grade mini assessments demonstrating proficiency
- **ALL decisions are made on an individual/student basis**

Test Design/Scoring

- FSA, like other Florida statewide assessments past and present, is not scored using a percent-correct or number-correct scoring method.
- Students correctly answering the **more-difficult items receive more credit** than students answering less-challenging items. In other words, the scoring model involves both the number and the difficulty of questions a student answers correctly.

FSA Scores and Performance Indicators

- A SINGLE SCORE on an assessment WILL NOT solely determine a student's placement or "path" the following year
- Students will receive a Scaled Score (SS), Achievement Level, Percentile Rank, and Raw Scores
- FSA scores are not expected until LATE summer
 - Communication will be sent once scores have been released to the school



FSA Score Report

Descriptions of Report:

- 1 –Identifies student, school, district, test administration
- 2 –Description of the FSA and resources for teachers, parents, & students.
- 3 –Performance Levels and Scale Score with information regarding the performance level.
- 4 –Performance Details lists the reporting categories, number of points possible, and number of points earned for each category.
- 5 –Performance Comparison shows how your student performed compared to the school, the district, and the state.

THE FLORIDA STANDARDS ASSESSMENT ENGLISH LANGUAGE ARTS GRADE 4 SCORE REPORT

DOE, JANE
SID: XXXXX91238
SPRING 2016

SCHOOL: DEMO SCHOOL (9999)
SCHOOL DISTRICT: DEMO DISTRICT (99)

1

2

PURPOSE OF THIS REPORT

The Florida Standards Assessments (FSA) are the statewide assessments in Florida. They are one of many tools our state's educators use to measure your student's mastery of the content that will be needed to be prepared for the next grade. This report is designed to provide you with insight into your student's performance so that you can continue supporting your student. If you have questions about this report, please contact your student's teacher or principal.

For resources to help your student better understand the Florida Standards, including tutorials, visit FloridaStandards.org. For resources to help your student better understand the FSA, including practice tests, please visit www.fsassessments.org.

Las Evaluaciones de los Estándares de la Florida (FSA) se administran en todo el estado de la Florida. Son una de las tantas herramientas que emplean los educadores de nuestro estado para medir el dominio del contenido que poseen los alumnos y que será necesario para estar preparados para el próximo grado. Este informe está diseñado para brindarle información sobre el desempeño de los alumnos a fin de que pueda continuar brindándole apoyo. Si tiene preguntas sobre este informe, póngase en contacto con el docente o el director de los alumnos.

Para obtener recursos, incluidos tutoriales, para ayudar a los alumnos a comprender mejor los Estándares de la Florida, visite FloridaStandards.org. Para obtener recursos, incluidos exámenes de práctica, para ayudar a los alumnos a comprender mejor las FSA, visite www.fsassessments.org.

Evalyasyon Nòm Florida a (Florida Standards Assessments ou FSA an angle) se evalyasyon yo fè nan tout eta Florida. Yo se youn nan plizyè zouti edikatif nan eta nou an itilize pou mezire nan ki nivo pitit ou metrize sa l ap bezwen konnen pou prepare pou klas l ap ladan ane pwochen an. Nou te kreye rapò sa a pou ba ou yon lide sou fason pitit ou ap travay lekòl pou w kapab kontinye swiv ak ede li. Si ou gen kesyon sou rapò sa a, tanpri kontakte pwofesè ouwa direktè pitit ou.

Pou jwenn resous pou ede pitit ou konprann Nòm Florida yo, ak leson pou aprann ladan, ale sou sitwèb FloridaStandards.org. Pou resous pou ede pitit ou konprann FSA a pi byen, ak egzèsis pou pratike lès yo, tanpri ale sou sitwèb www.fsassessments.org.

3

YOUR STUDENT'S PERFORMANCE ON THE 4TH GRADE ENGLISH LANGUAGE ARTS ASSESSMENT

PERFORMANCE LEVEL

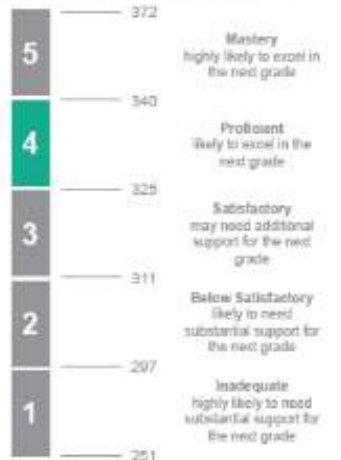


Students who score in Level 4 demonstrate proficiency in the Florida Standards for their grade. They are likely to excel in the next grade.

Los alumnos que obtienen un puntaje de nivel 4 demuestran competencia en los estándares de la Florida para su grado. Es probable que sobresalgan en el próximo grado.

Eliw rezilta yo nan Nivo 4 yo montre yo gen konpetans nan Nòm Florida pou klas yo ye ane sa a. Yo gen chans pou reyisi nan klas y ap ladan ane pwochen an.

328



4

YOUR STUDENT'S PERFORMANCE DETAILS

Number of points earned by your student in each reporting category on this assessment

Reporting Category	Points Earned	Points Possible
Key Ideas and Details	7	11
Craft and Structure	8	18
Integration of Knowledge and Ideas	7	13
Language and Editing	4	8
Text-based Writing	2	10

5

YOUR STUDENT'S PERFORMANCE COMPARED

Percentage of students in each Performance Level in your district and the state

	School	District	Florida
Level 5	20%	20%	20%
Level 4	22%	22%	20%
Level 3	20%	20%	20%
Level 2	20%	20%	20%
Level 1	20%	20%	20%

How are FSA Results Used?

- FSA results are used as an accountability tool for Districts and School Grades
- FSA results provide teachers and schools with additional information about each student's proficiencies.
- Results are used **IN ADDITION TO** teacher observations and coursework throughout the year in making determinations of student strengths and areas of opportunity*

How do we help your student prepare?

- Challenging & Viable Curriculum aligned to tested standards, delivered by highly qualified educators
- Use of research-based textbooks
- PLC's
- Common assessments and practice tests to set format and content expectations
- Frequent progress monitoring and data disaggregation
- Interventions supporting students who have learning gaps
- Small group, differentiated instruction
- Support Facilitation



How can you help your student prepare?

- Help your child realize this is not a test you can study for. However, it is very important they do their best every day leading up to and on the FSA Days
- Ensure that your child participates in the practice tests so that he/she becomes familiar with the items
- Help your child get a good night sleep and eat a nutritious breakfast
- Provide Emotional and Positive Support
 - Talk to your child and encourage them
 - Work with your child to help them learn how to lower anxiety/stress about the test
- Arrive to school every day – attendance is crucial



Helpful Resources

✓ FSA Portal

www.FSAssessments.org

✓ Florida State Standards (cpalms)

<http://www.cpalms.org/Public>

✓ Florida Department of Education Web Site

<http://www.fldoe.org>

✓ School Accountability Reports

<http://schoolgrades.fldoe.org>



FSA Portal

➤ FSA Portal: www.FSAssessments.org

- The FSA Portal was developed as a communication tool by the Florida Department of Education and contains all published information regarding FSA assessments, and released Practice Tests
- Access to the portal and information is public.



PVA Contacts

- ✓ Dr. Joy Reichenberg, Principal: Joy.Reichenberg@stjohns.k12.fl.us
- ✓ Mr. Brian Green, AP (K-2): Brian.Green@stjohns.k12.fl.us
- ✓ Ms. D'Niessa Slocum, AP (6-8): Dniessa.Slocum@stjohns.k12.fl.us
- ✓ Mr. Zach Strom, AP (3-5): Zachary.Strom@stjohns.k12.fl.us
- ✓ Ms. Audra Wilson, Testing Coordinator: Audra.Wilson@stjohns.k12.fl.us
- ✓ Ms. Amie Miller, Literacy Coach: Amie.Miller@stjohns.k12.fl.us

Questions and Answers

