

Florida Panther Exam

20 Questions to
Test your Florida panther I.Q.

Purr-fessor Lotz



Mark Lotz, Panther Biologist
Florida Fish & Wildlife Conservation Commission

What color are Florida panthers?

a) Black

b) Pink

c) Tan

d) Plaid

What color are Florida panthers?

a) Black

b) Pink

c) Tan

d) Plaid

Shades of tan

NOT black

Jaguars and
leopards have
black phases

Black cats
commonly called
“panthers”



Where do Florida panthers range?

a) Florida

**b) The Everglades and Big Cypress
physiographic regions**

c) Less than 5% of its historic range

d) All of the above

Where do Florida panthers range?

a) Florida

b) The Everglades and Big Cypress
physiographic regions

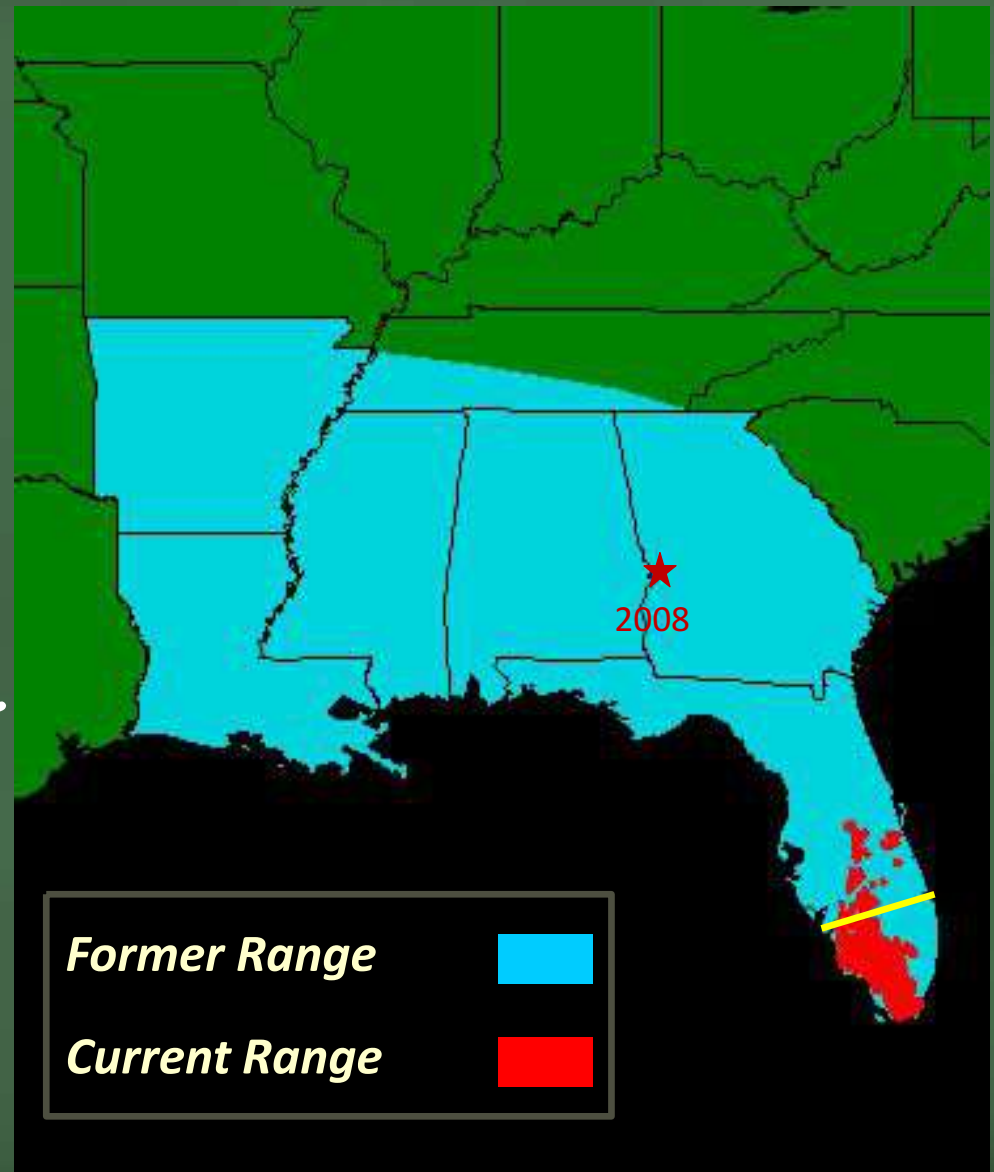
c) Less than 5% of its historic range

d) All of the above

Breeding
population in
south FL

No females north
of river since 1972

Males in central
FL, beyond



The Florida panther is most closely related to

a) Mountain lions

b) Cougars

c) Pumas

d) None of the above

The Florida panther is most closely related to

a) Mountain lions

b) Cougars

c) Pumas

d) None of the above

Panther, puma, cougar, mountain lion are all used to describe Puma concolor.

The Florida panther is a subspecies of puma.



How much do adult Florida panthers weigh?

- a) 25-45 pounds**
- b) 55-150 pounds**
- c) 175-250 pounds**
- d) 300 pounds**

How much do adult Florida panthers weigh?

a) 25-45 pounds

b) 55-150 pounds

c) 175-250 pounds

d) 300 pounds

Males ~ 130 lbs

Females ~ 80 lbs



Photo courtesy of Lee Reed

**Panthers live to be _____ years old
in the wild.**

a) 5

b) 10

c) 18

d) 30

**Panthers live to be _____ years old
in the wild.**

a) 5

b) 10

c) 18

d) 30

Males ~ 10 years old

Females ~ 15 years old



Panthers preferred food items include

- a) Deer and hogs**
- b) Armadillos and raccoons**
- c) People**
- d) A and B**

Panthers preferred food items include

a) Deer and hogs

b) Armadillos and raccoons

c) People

d) A and B



Panthers are mainly solitary except during mating and when females are raising kittens.

a) True

b) False

Panthers are mainly solitary except during mating and when females are raising kittens.

a) True

b) False

My high school has
panther pride...



...but there is
no such thing
as a pride of
panthers.

What time of year do Florida panthers breed?

a) Summer

b) Winter

c) Spring

d) Year round

What time of year do Florida panthers breed?

a) Summer

b) Winter

c) Spring

d) Year round

Males
mature 3 yrs

Females
mature 1.5 yrs

Gestation 3 mo



Florida panthers give birth to how many kittens?

a) 1-4

b) 2-3

c) 8

d) 6

Florida panthers give birth to how many kittens?

a) 1-4

b) 2-3

c) 8

d) 6

Den in
palmetto
thickets



Every 2 yrs

Kittens disperse
9-18 mo



What habitat do Florida panthers use?

- a) Pine forests and hardwood hammocks**
- b) Cypress swamps**
- c) Back yards**
- d) All of the above**

What habitat do Florida panthers use?

a) Pine forests and hardwood hammocks

b) Cypress swamps

c) Back yards

d) All of the above

Habitat generalists



A Florida panthers home range can be up to

a) 2 sq mi.

b) 20 sq. mi.

c) 200 sq. mi.

d) 2000 sq. mi.

A Florida panthers home range can be up to

a) 2 sq mi.

b) 20 sq. mi.

c) 200 sq. mi.

d) 2000 sq. mi.

Males

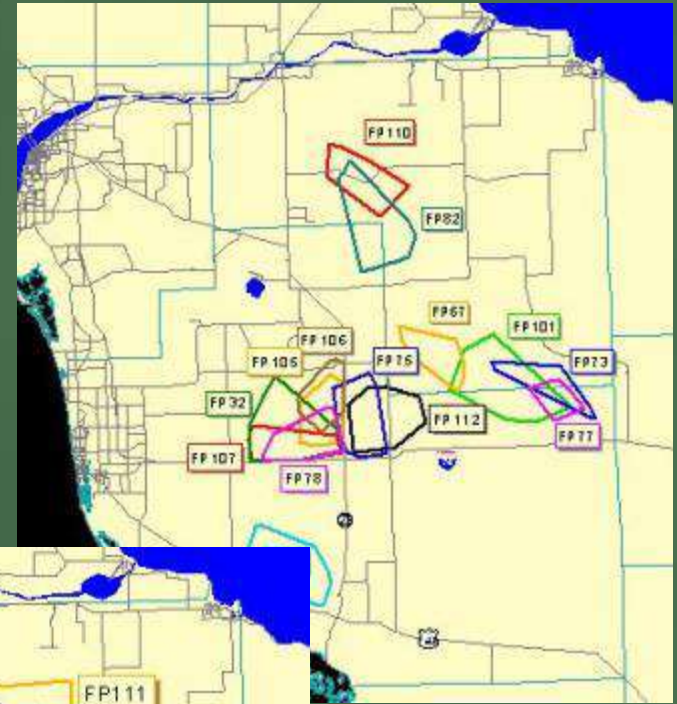
Defend territories

Encompass many females

Females

Don't defend

Share with female offspring



The Florida panther is

a) Endangered

b) Threatened

c) Species of special concern

d) None of the above

The Florida panther is

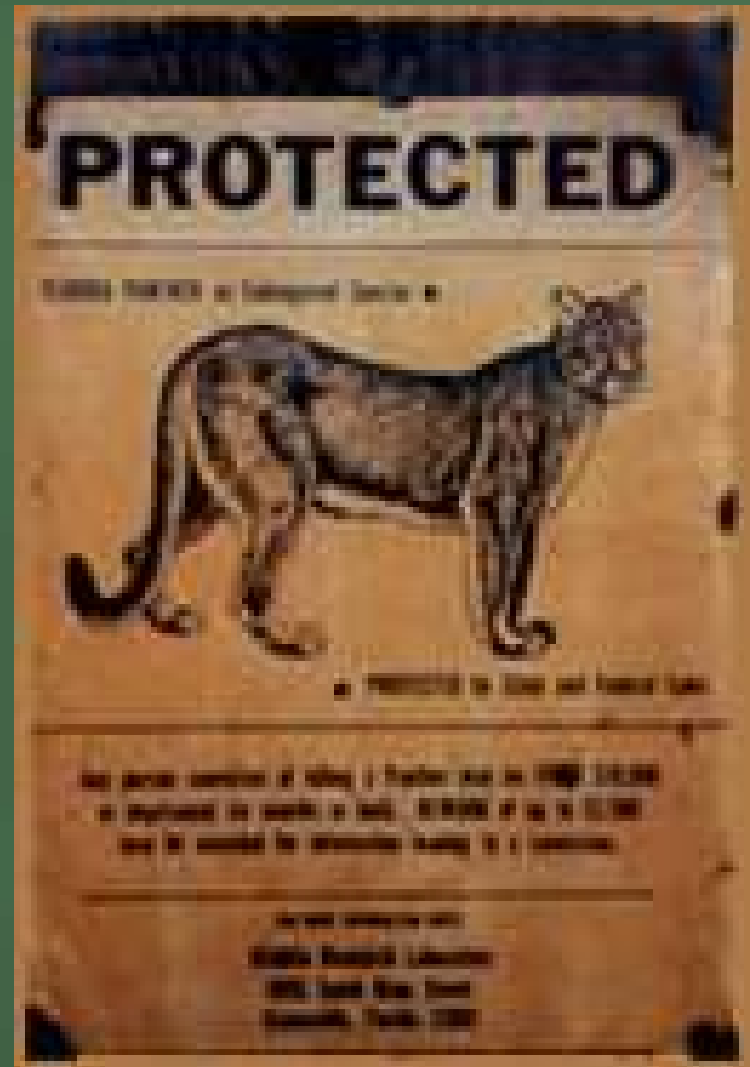
- a) Endangered**
- b) Threatened**
- c) Species of special concern**
- d) None of the above**

1950: Game species

1958: Listed
endangered by FL

1967: Listed
endangered by U.S.

1973: Protected
under ESA

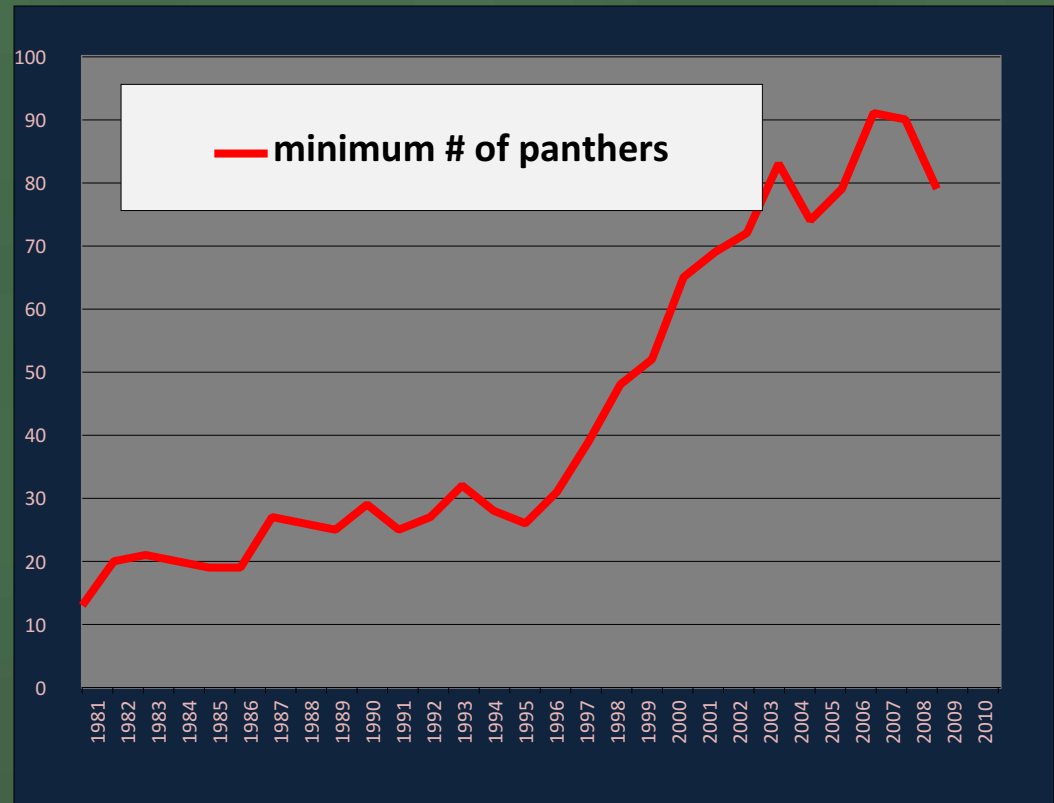


Current Population Range 100-180

Declined in
1900's

May have been
fewer than 20

Genetic
restoration
helped rebound



The biggest threat to the Florida panthers continued survival is

a) Inbreeding

b) Cars

c) Habitat loss and fragmentation

d) Climate change

The *biggest* threat to the Florida panthers continued survival is

a) Inbreeding

b) Cars

c) Habitat loss and fragmentation

d) Climate change

Where's a panther to go?



Because the Florida panther population is isolated, inbreeding has caused

- a) Kinked tails**
- b) Cowlicks**
- c) Holes in the heart**
- d) All this and more**

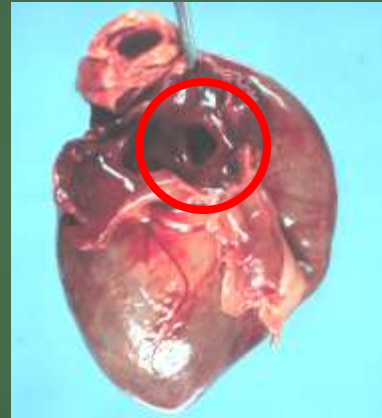
Because the Florida panther population is isolated, inbreeding has caused

a) **Kinked tails**

b) **Cowlicks**

c) **Holes in the heart**

d) All this and more



Genetic restoration was meant to

a) Increase genetic variability

b) Mimic historical gene flow

c) Prevent extinction

d) All of the above

Genetic restoration was meant to

a) Increase genetic variability

b) Mimic historical gene flow

c) Prevent extinction

d) All of the above

8 female Texas
pumas released
1995

Closest
population that
historically
interbred

Project
successful!



What plans are in place to manage human-panther conflicts?

a) Collier County Disaster Management Plan

b) Plan? What plan?

c) People are allowed to do whatever they want to

d) The Interagency Florida Panther Response Plan

What plans are in place to manage human-panther conflicts?

a) Collier County Disaster Management Plan

b) Plan? What plan?

c) People are allowed to do whatever they want to

d) The Interagency Florida Panther Response Plan

Human-Panther Interactions

1. Sighting
 2. Encounter
 3. Incident
 4. Threat
 5. Attack
- Depredations

Interagency Florida Panther Response Plan

Florida Fish and Wildlife Conservation Commission
620 South Meridian Street
Tallahassee, FL 32399-1600

U.S. Fish and Wildlife Service
1875 Century Blvd.
Atlanta, GA 30345

National Park Service
100 Alabama St. SW
1924 Building
Atlanta, GA 30303



If you see a panther in the wild you should

- a) Enjoy the experience from a safe distance.**
- b) Trip your hiking partner and run away as fast as you can.**
- c) Approach the panther so you can get a better picture**
- d) Call 911**

If you see a panther in the wild you should

a) Enjoy the experience from a safe distance.

b) Trip your hiking partner and run away as fast as you can.

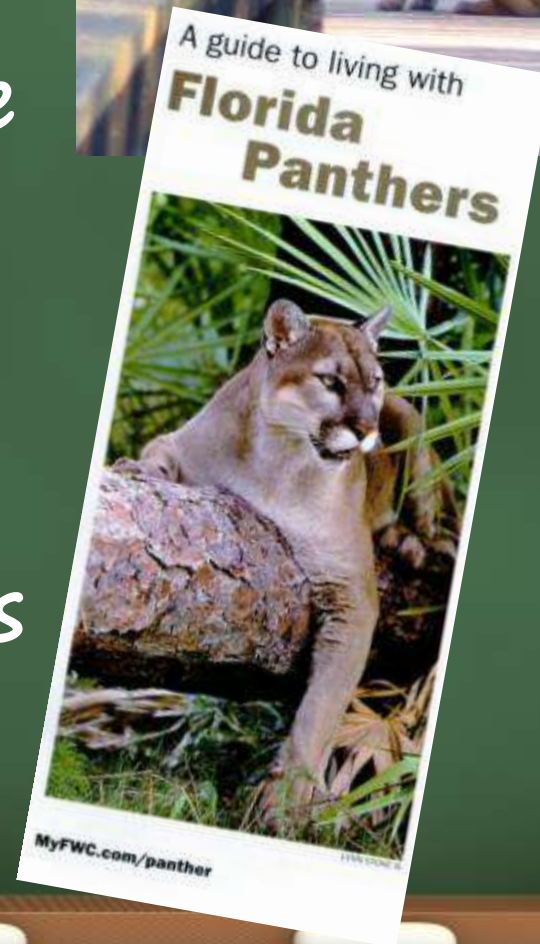
c) Approach the panther so you can get a better picture

d) Call 911

Presence does not
constitute a threat

Panthers should not be
feared but caution
should be exercised as
with any wild animal.

Follow safety guidelines



The best thing to do to protect your pets and hobby farm animals from a panther attack is to

- a) Chain them up so the panther can't drag them away**
- b) Use guard animals such as dogs or donkeys**
- c) Keep them in a well lit area**
- d) House them in a predator safe enclosure, especially at night when panthers are typically most active.**

The best thing to do to protect your pets and hobby farm animals from a panther attack is to

- a) Chain them up so the panther can't drag them away
- b) Use guard animals such as dogs or donkeys
- c) Keep them in a well lit area
- d) House them in a predator safe enclosure, especially at night when panthers are typically most active.**

It really is that simple.



FWC 0396

RECONYA

How are Florida panthers captured for study?

- a) Highly specialized proprietary techniques**
- b) Ancient Chinese secret**
- c) Dogs, because everyone knows cats are afraid of dogs**
- d) Traps baited with catnip**

How are Florida panthers captured for study?

a) Highly specialized proprietary techniques

b) Ancient Chinese secret

c) Dogs, because everyone knows cats are afraid of dogs

d) Traps baited with catnip



Dogs tree the
panther and hold
it there until our
arrival



Florida panther research and management activities conducted by the Florida Fish and Wildlife Conservation Commission are funded by

a) Grants

b) Viewers like you

c) Taxes

d) Sales of the Florida panther license plate

Florida panther research and management activities conducted by the Florida Fish and Wildlife Conservation Commission are funded by

a) Grants

b) Viewers like you

c) Taxes

d) Sales of the Florida panther license plate

Florida Panther Research and Management Trust Fund

\$25 extra, 85%
goes into trust
fund

Program funded
100% through
plate sales



Questions?



www.floridapanther.net.org

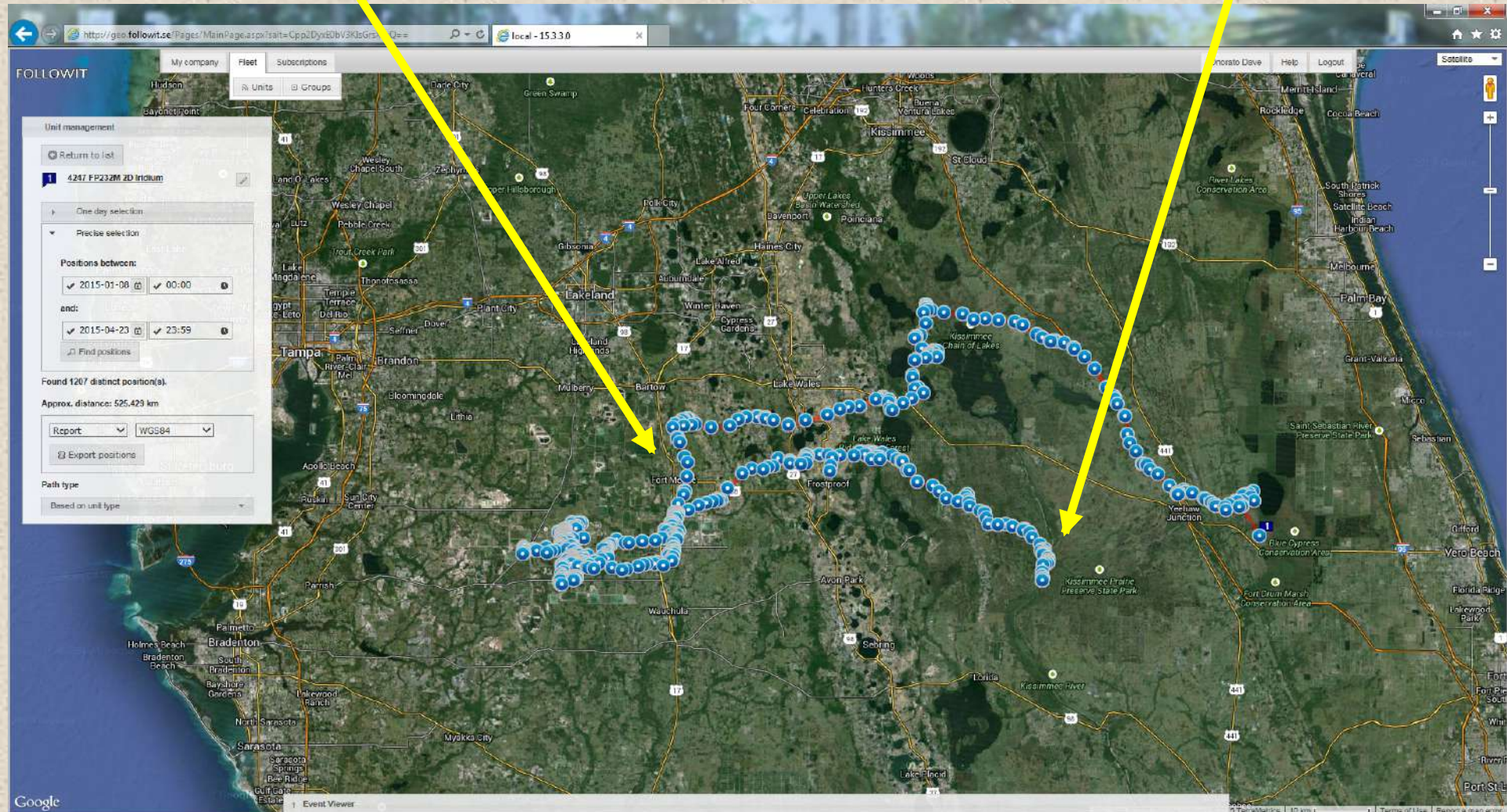
Mark Lotz

FP232

The new FP62?

Hit by vehicle in Ft. Meade on 4/15/2014 during a lunar eclipse.

Released on Kissimmee Prairie Preserve State Park on 1/7/2015.



Returned to Ft. Meade within a week then cut back across the state.