

CURRICULUM NIGHT

OCTOBER 28, 2020

5TH GRADE

Mr. Latschar

Mr. Glenn

Walnut Creek Elementary School
3535 McDonough Parkway
McDonough, Georgia 30253



MEET OUR STAFF



Mrs. Bradley



Mrs. Butler



Mrs. Salter



Ms. Cooper



Mrs. Green



Ms. Watts
ESE Teacher



Ms. Southerland
ESE Teacher



Mrs. Schneller
Gifted



THE HYBRID MODEL

Virtual Learning Modes of Instruction

Asynchronous



Student-directed learning without live teacher interaction.

- Resources
 - Recorded teacher lessons
 - Video and online learning
 - Digital and game-based learning tasks
- Activities
 - Assigned content practice and reading
 - Communication via email and/or learning platform

Synchronous



Students interact directly with the teacher(s) at specified times for live virtual instruction:

- Direct instruction/modeling
- Academic feedback opportunities
- Small group discussion and peer collaboration
- Individual meetings with teacher

MATH

HCS TEACHING AND LEARNING STANDARDS

SCIENCE!

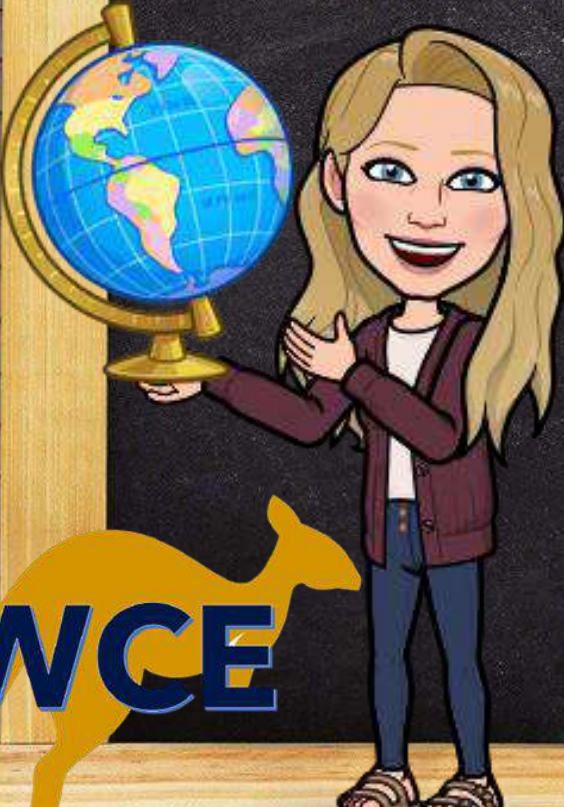


HENRY COUNTY SCHOOLS
Better Together.



5TH GRADE

ENGLISH LANGUAGE ARTS | MATH | SCIENCE | SOCIAL STUDIES

WCE



BALANCED MODELS OF INSTRUCTION



BALANCED INSTRUCTION - ENGLISH LANGUAGE ARTS

We are committed to excellence in literacy by promoting reading, writing, and speaking/listening. Students will engage in literary experiences that include exposure to high quality texts, rigorous and personalized instruction, and activities to foster critical thinking and relevant learning. A balanced approach between core knowledge and skills, reading, writing, speaking and listening allows students to engage in all areas of learning and ultimately develop independence in their abilities.

Embedded Practices

- Students engage in meaningful and challenging learning activities that address their unique characteristics and needs.
- Students engage in learning experiences that foster communication, collaboration, creativity, and critical thinking.
- Students leverage a variety of digital and print resources to learn content and demonstrate what they know.

Reading

- Students read, comprehend, and analyze on or above grade level texts.
- Students engage with complex texts in multiple genres and a variety of formats to build and foster independent reading.
- Students use reference materials to answer questions or solve problems.
- Students acquire grade level vocabulary and build reading fluency.

Writing

- Students write for varied purposes in multiple genres using a variety of formats.
- Students write in response to texts.
- Students use research to produce writing that answers questions or solves problems.
- Students communicate in writing using appropriate grade level vocabulary, language conventions, and textual evidence to support ideas.

Speaking & Listening

- Students engage in academic conversations around relevant topics.
- Students contribute in discussions, using evidence from a text to support claims and ideas.
- Students use appropriate grade level vocabulary, grammar, spelling and language in dialogue and presentations.

Knowledge & Skills

- Students practice word study through phonics, word work, and vocabulary.
- Students learn to read in K-2 through explicit instruction.
- Students read to learn in grades 3-5.
- Students build their literacy knowledge in grades 6-12.

BALANCED INSTRUCTION - MATHEMATICS

An effective mathematics classroom incorporates a variety of instructional approaches that focus on the development of conceptual understanding and procedural skills through problem-solving. A balance of these approaches allows students to engage in authentic learning, utilize the mathematical practices, and make connections.

Embedded Practices

- Students engage in meaningful and challenging learning activities that address their unique characteristics and needs.
- Students engage in learning experiences that foster communication, collaboration, creativity, and critical thinking.
- Students leverage a variety of digital and print resources to learn content and demonstrate what they know.

Standards for Mathematical Practice

- Make sense of problems and persevere in solving them.
- Reason abstractly and quantitatively.
- Construct viable arguments and critique the reasoning of others.
- Model with mathematics.
- Use appropriate tools strategically.
- Attend to precision.
- Look for and make use of structure.
- Look for and express regularity in repeated reasoning.

Apply & Problem-Solve

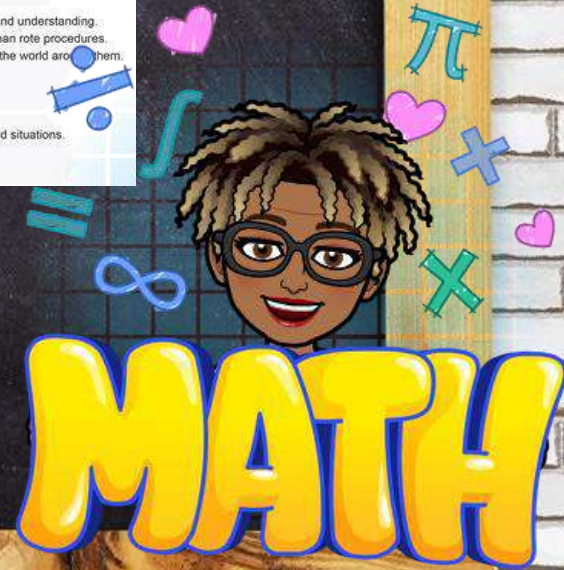
- Students communicate ideas to develop skills and understanding.
- Students focus on efficiency of strategy rather than rote procedures.
- Students solve problems to understand math in the world around them.

Authentic Connections

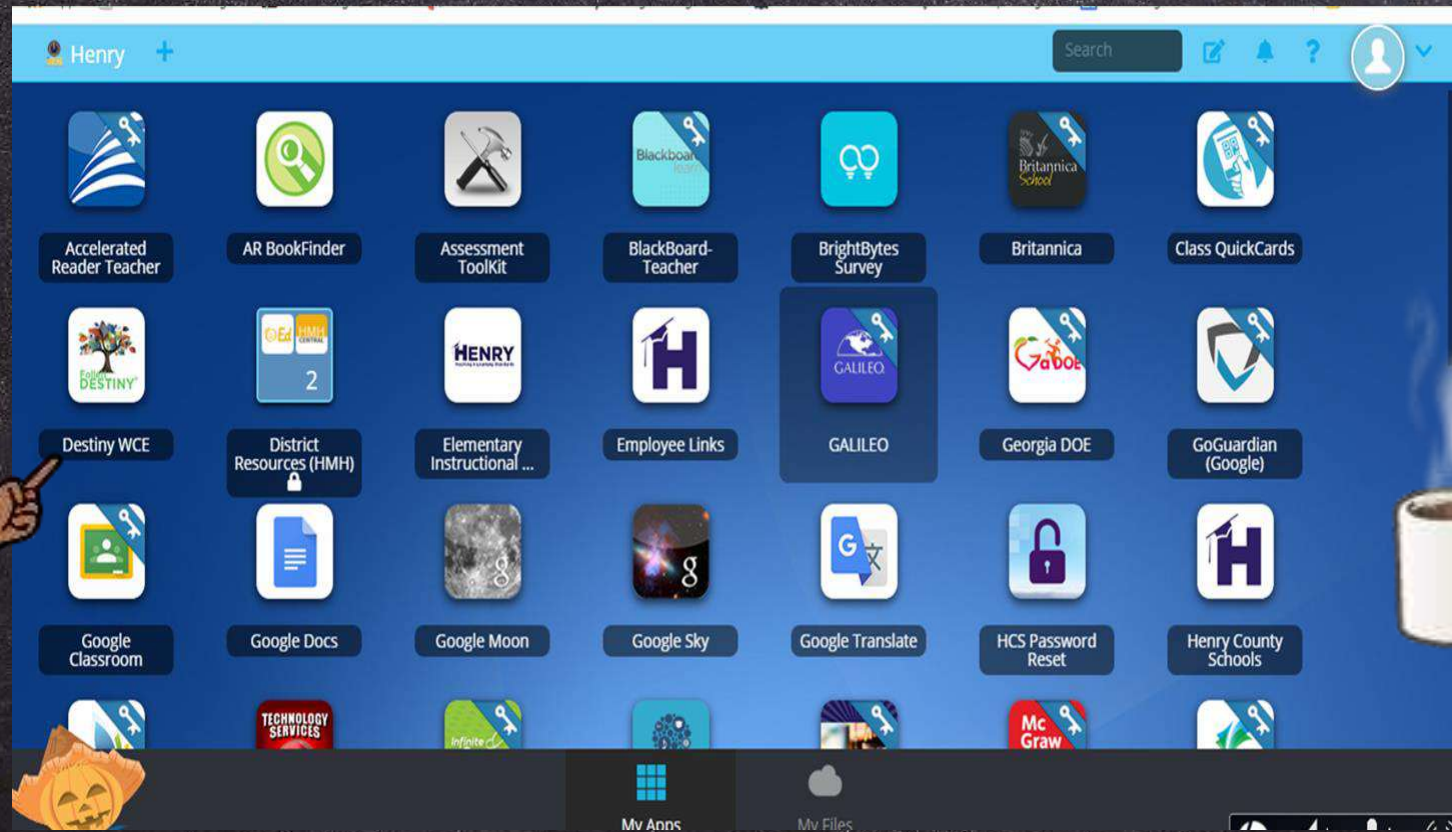
- Students mathematize their world.
- Students make mathematical connections.
- Students apply their thinking to new contexts and situations.
- Students engage in inquiry.

Core Knowledge & Skills

- Students utilize various tools to make sense of mathematical skills and concepts.
- Students understand concepts through models and relevant examples.
- Students visually represent mathematics.
- Students engage in explanatory/reflective writing.
- Students develop skills through purposeful practice.
- Students compute with numbers accurately, efficiently, and flexibly.



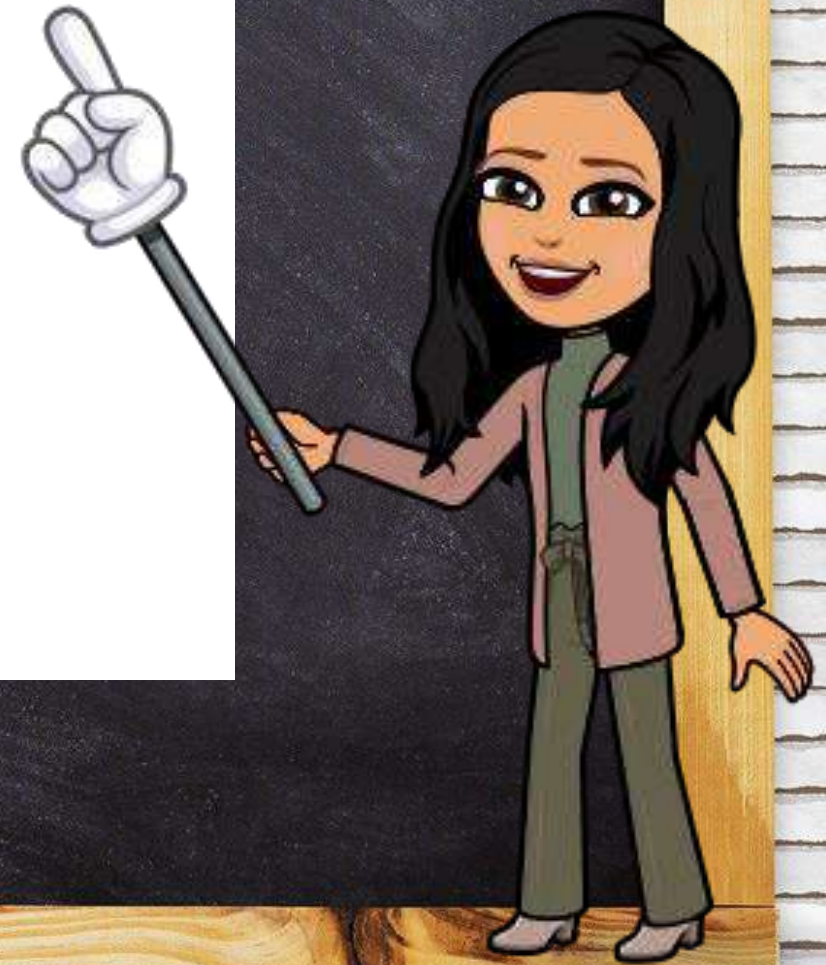
CLASSLINK/EMPOWER



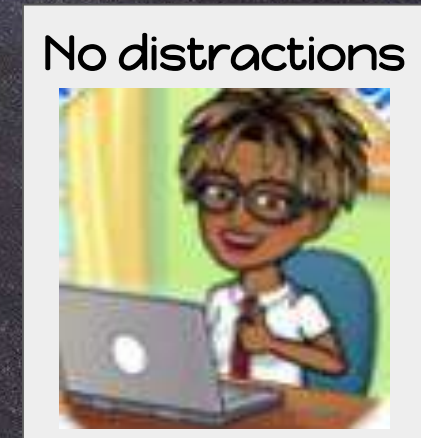
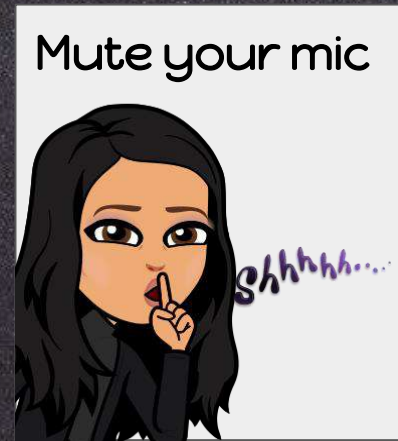
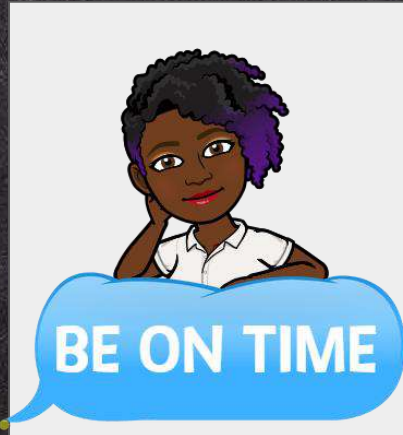
GOOGLE CLASSROOM



Google Classroom



GOOGLE MEET EXPECTATIONS



FTF EXPECTATIONS

- Remind students to come with a **CHARGED** laptop.
- Ready to send your student back?
 - Shifting from remote to FTF
 - Call the front office
 - 48 hr notice



GRADING POLICY & IC

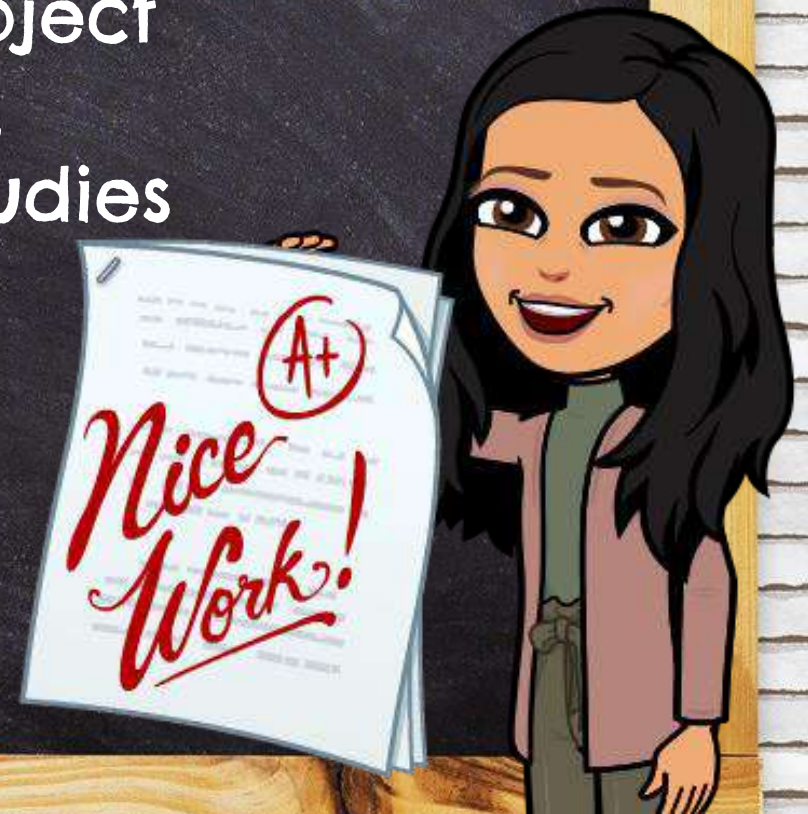
- Check Infinite Campus weekly for missing assignments,
- Student assignments are posted in Google Classroom, Readworks, HMH, and Illuminate weekly
- Students have the opportunity to re-engage for Mastery twice
- Below a 70 is an F

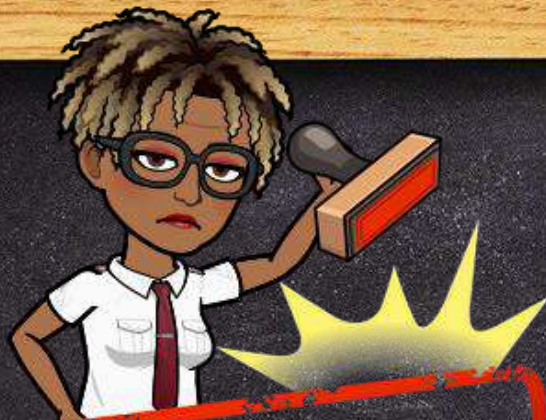
GRADES



ASSESSMENTS

- Students are given weekly checkpoints
- 1 grade per week, per subject
- Math, Reading, Language, Writing, Science, Social Studies
- Unit Assessments





30 MINUTES

MINDPLAY



- It is MANDATED for students to spend a minimum of 30 minutes each night on Mindplay
- Students should have completed 2 ½ hours by Friday
- Nightly homework: Mindplay and missing assignments

WCE



TEACHER/PARENT COMMUNICATION

Ways to we communicate:

- Class Dojo
- Setting up a conference
- SST Process (if needed)
- Transportation changes
- Return notes from doctor or parent



IMPORTANT POINTS TO REMEMBER

- Please remember, you chose F2F or remote as your child's learning pathway
- If the learning pathway changes are needed:
 - contact the office
 - wait to be notified within 48 hours
- Please do not send students to school until your change has been authorized and confirmed

REMINDER

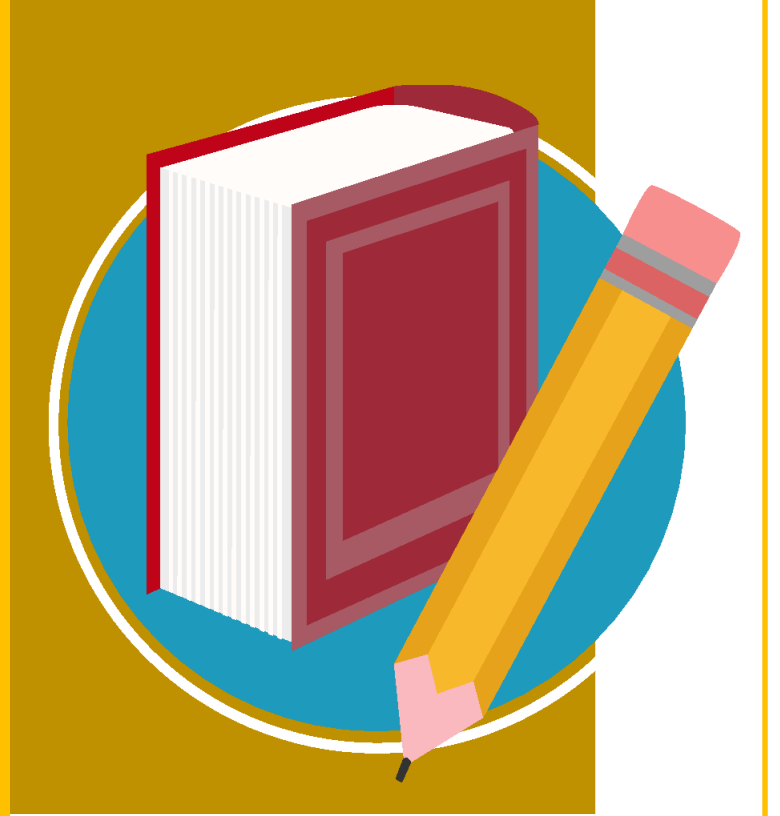


IMPORTANT POINTS TO REMEMBER

- It is imperative that students consistently complete assignments on a daily basis
- Please monitor and ensure assignments are done by having your child show you the completed work and graded assignments
- When the term ends and grades are posted changes cannot be made
- Term 2 ends on December 18



Thank you for
attending our
WCE Virtual
Curriculum
Night!



Please complete
this survey.
Thank you!

<https://rb.gy/6mjuf1>

