

Chapter 4

European

Exploration into the New World



GPS Standard & Essential Question

SS8H1 - The student will evaluate the development of Native American cultures and the impact of European exploration and settlement on the Native American cultures in Georgia.

B.) Evaluate the impact of European contact on Native American cultures including Spanish missions along the barrier islands, and the exploration of Hernando DeSoto.

Essential Question: How did life change for the Mississippian Indians after the arrival of European explorers?

Section 1 – Spanish Exploration of the New World

Who was the 1st to explore modern-day Georgia? When?

Hernando DeSoto in 1540

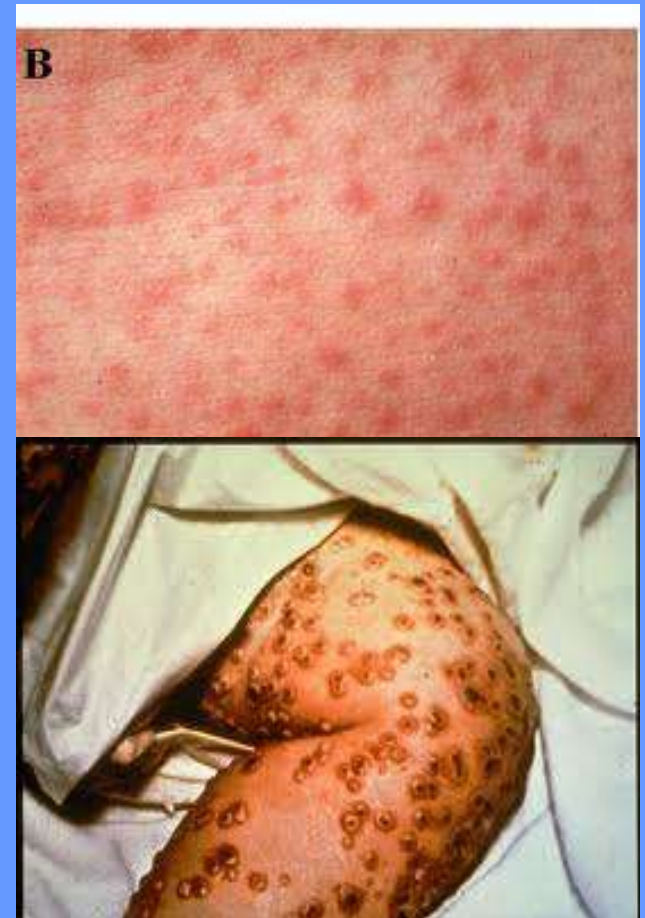


Why was de Soto able to defeat a
larger army?

He had superior weapons – guns,
crossbows, horses, & armor.

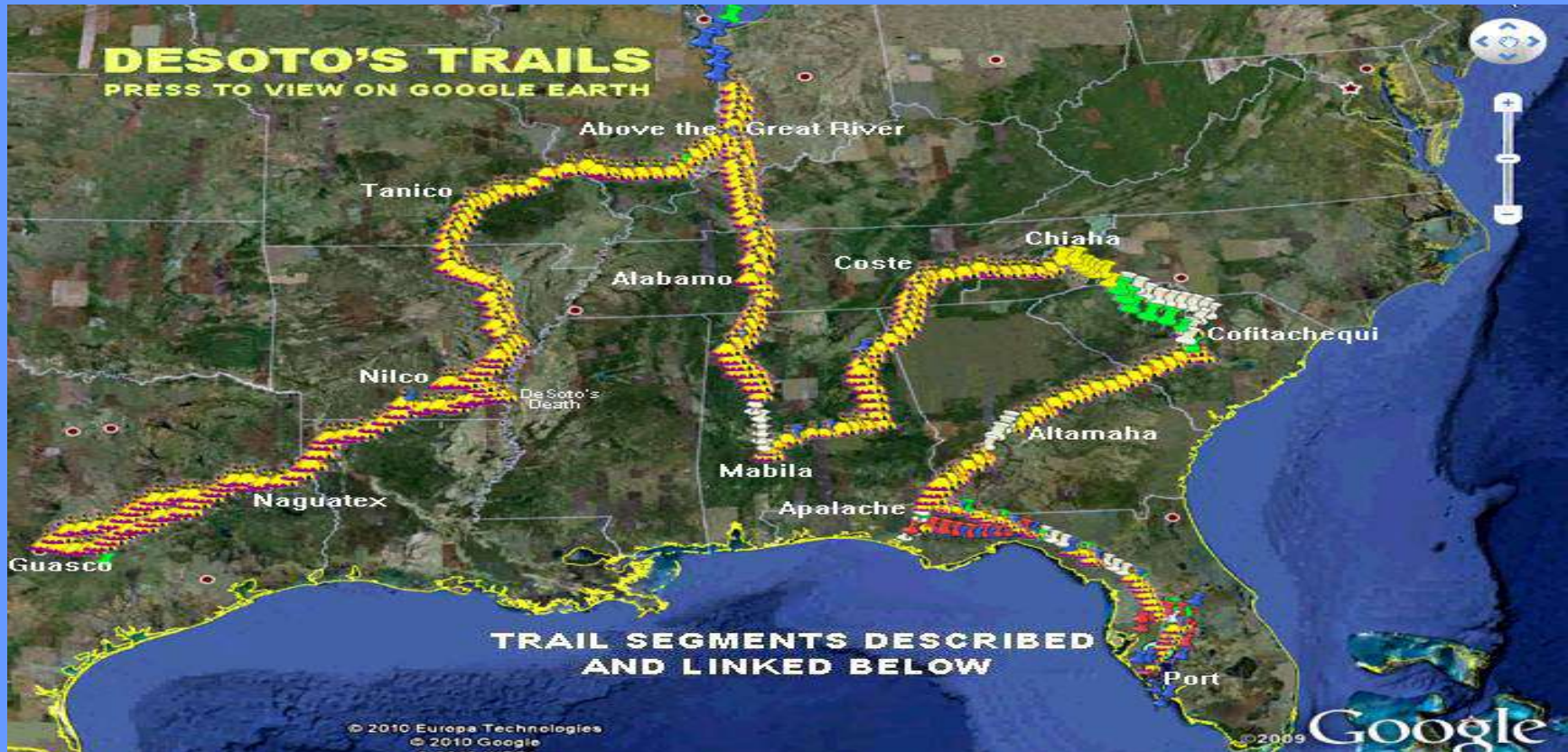
What caused the deaths of millions of Native Americans? Name them.

European diseases
killed almost $\frac{1}{2}$ –
measles,
smallpox,
influenza,
whooping cough



What caused de Soto's expedition to fail?

Most of his troops died of disease or starvation and he found no gold.



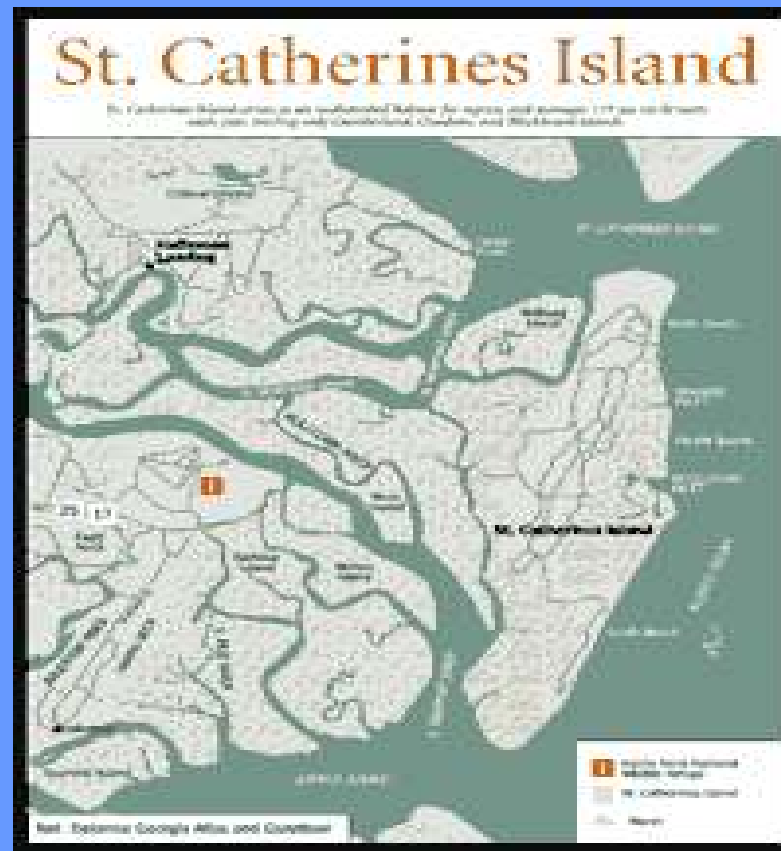
Define the term “colony”.



A settlement
in a new
land that
has ties to
their
homeland

Where & when was GA's 1st settlement established?

Santa Catalina mission on St. Catherine's Island in 1566



What enduring impact did Spanish missions have on both the Old and New Worlds?

What did the region around St. Catherines become known as? Guale

What other missions did the Spanish establish? St. Simons Island and Sapelo at the mouth of the Altamaha

Spanish impact on the New World? Spain established a firm grip on the New World.

Spanish impact on the Old World? They became rich and powerful, Europe resented them. In the end, Spain lost its naval fleet the Armada to storms and the English.

GPS Standard & Essential Question

SS8H1 - The student will evaluate the development of Native American cultures and the impact of European exploration and settlement on the Native American cultures in Georgia.

C.) Explain reasons for European exploration of North America and settlement with emphasis on the interests of the French, Spanish and British in the southeast area of North America.

Essential Question: Why did European countries explore, claim, and settle the North American continent?

What is a middleman?

A trader who
buys goods
from producers
& sells them to
other traders &
consumers



How does he affect the cost of
luxury goods?

It drives the
price up.



What is a monarch?

- King or queen



Which European country was important in the fight to control the New World? What would it gain?

Spain –
gain
wealth
and
power



What happened to Spain's fleet
of ships?

It was destroyed by England's
better sailors & ships and by
bad storms at sea.



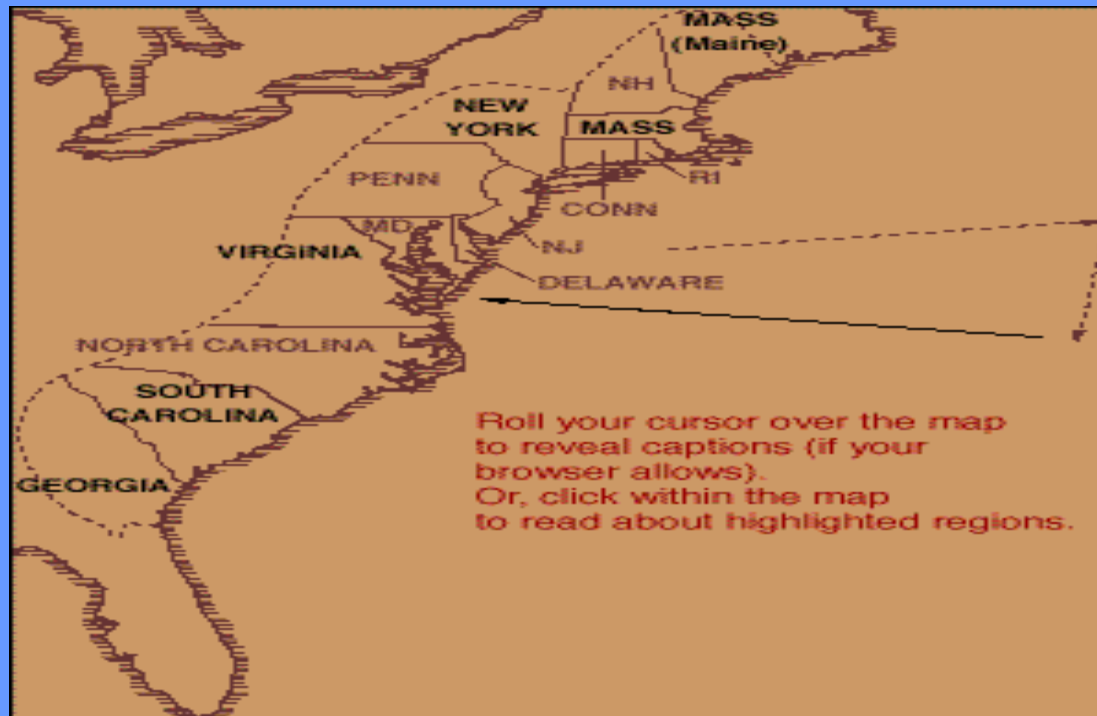
How did the defeat of the Spanish Armada affect England?

It gave them control of the seas & opened their door to the New World.



How many colonies did England establish by the late 1600s & where?

12 were established along the Atlantic coast of North America.



Give 4 reasons why people came to settle in these new colonies.

Religious freedom, Economic gain, New start, Better life

Go to T-drive, Ga. History, PPT videos, Unit 2, Chapter 4 and click the video “The English Colonies: Why they were started and why people came”

What is “mercantilism”?

An economic system for England to export more than it imported. This economic principle was one of England’s top priorities in the New World.

Under this system, what did the colonists provide for England? Name 5.

Raw materials –

sugar,

timber,

rice,

tobacco, &

cotton



Name 3 ways this was of benefit to
England.

- 1) No longer needed to import these goods from other countries
- 2) Could sell finished products back to the colonies & other countries
- 3) It strengthened the British economy.

What crop was very important to Great Britain's success in the South?

Tobacco



What impact did the growing of tobacco have on the Jamestown settlement?

It created
a need
for
labor.



What is an “indentured servant”?

A person who agreed to work 4-7 years in exchange for paid passage to the New World



How did this system change by
the end of the 17th century?

They became
slaves
instead of
servants.

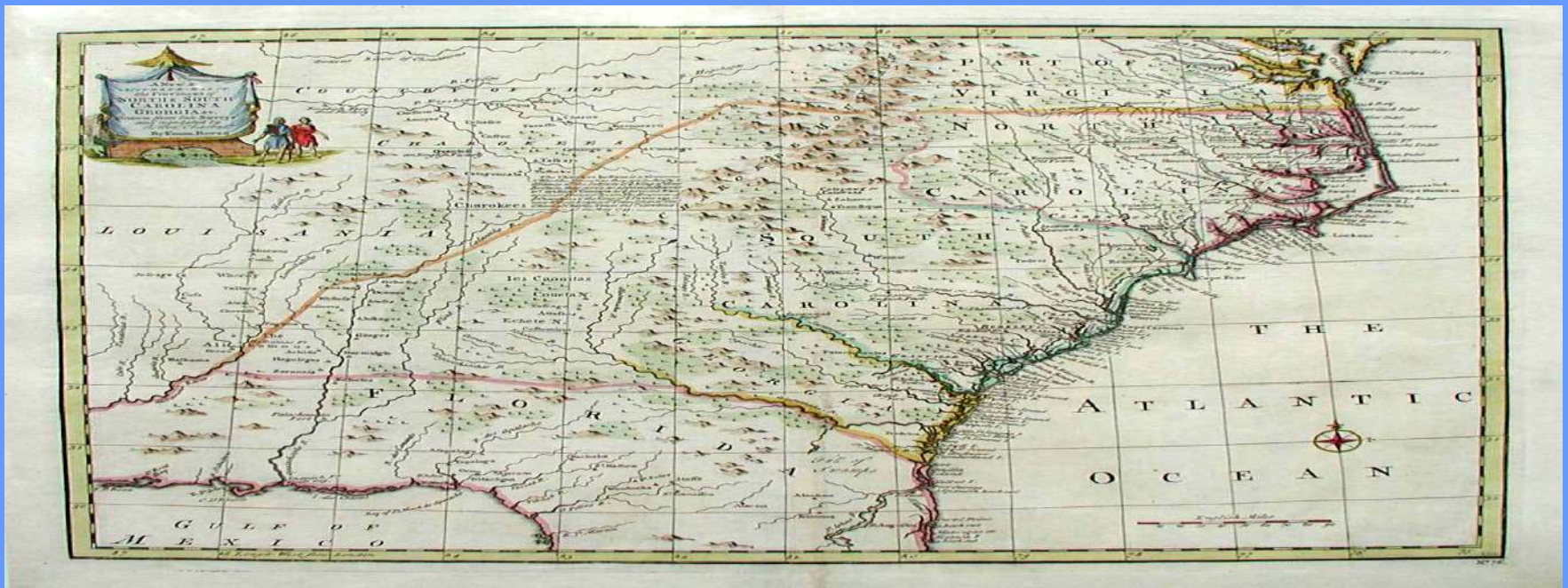
What caused a conflict between Spain & Great Britain in the Carolinas?



Spain was already in Guale when Great Britain wanted to establish settlements.

Why did Great Britain establish a colony in GA?

To act as a buffer between its colonies in the Carolinas and the Spanish in Florida.



Where was GA's 1st fort located and what was its name?

At the mouth of the Altamaha River; called Fort King George



What happened to the fort?



It was abandoned in 1727 due to Indian raids, sickness, & swampy conditions.

