

Elapsed Time



Created by Gwendolyn Best

Finding Elapsed Time

Given a starting time and an ending time, find out how much time was spent.

Given a start time and the amount of time spent, tell the finishing time.

Given an ending time and the amount of time spent, tell the starting time.



KEY POINTS TO REMEMBER:

You need to understand the difference between A.M. and P.M.

- There are only 60 minutes in an hour. Therefore, using addition won't always work, you have to think it through.



Midnight starts a new day

- 12:00 A.M. midnight is the beginning of each new day
- You probably get up around 7:00 A.M.
- 10:30 or 11:00 A.M. you are thinking about lunch
- **12:00 P.M.** IS NOON

After noon is **PAST MORNING**



Is it A.M. or P.M.?

PTA Meeting

PM

Getting Ready for
School

AM

Getting Ready for
Bed

PM



Is it A.M. or P.M.?

School Gets Out

PM

The Sun Rises

AM

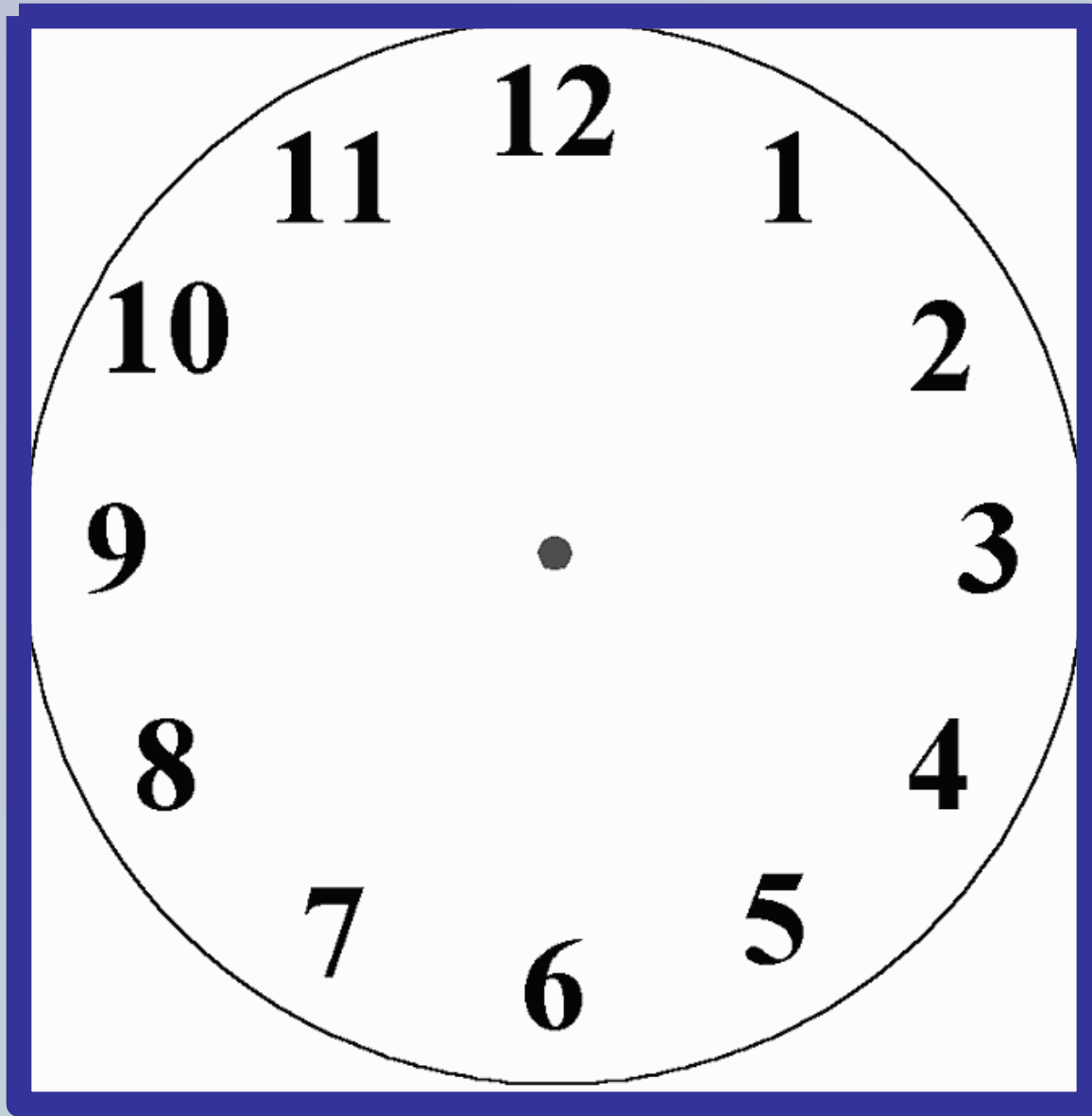
Softball Game

PM

Stars In The Sky

PM



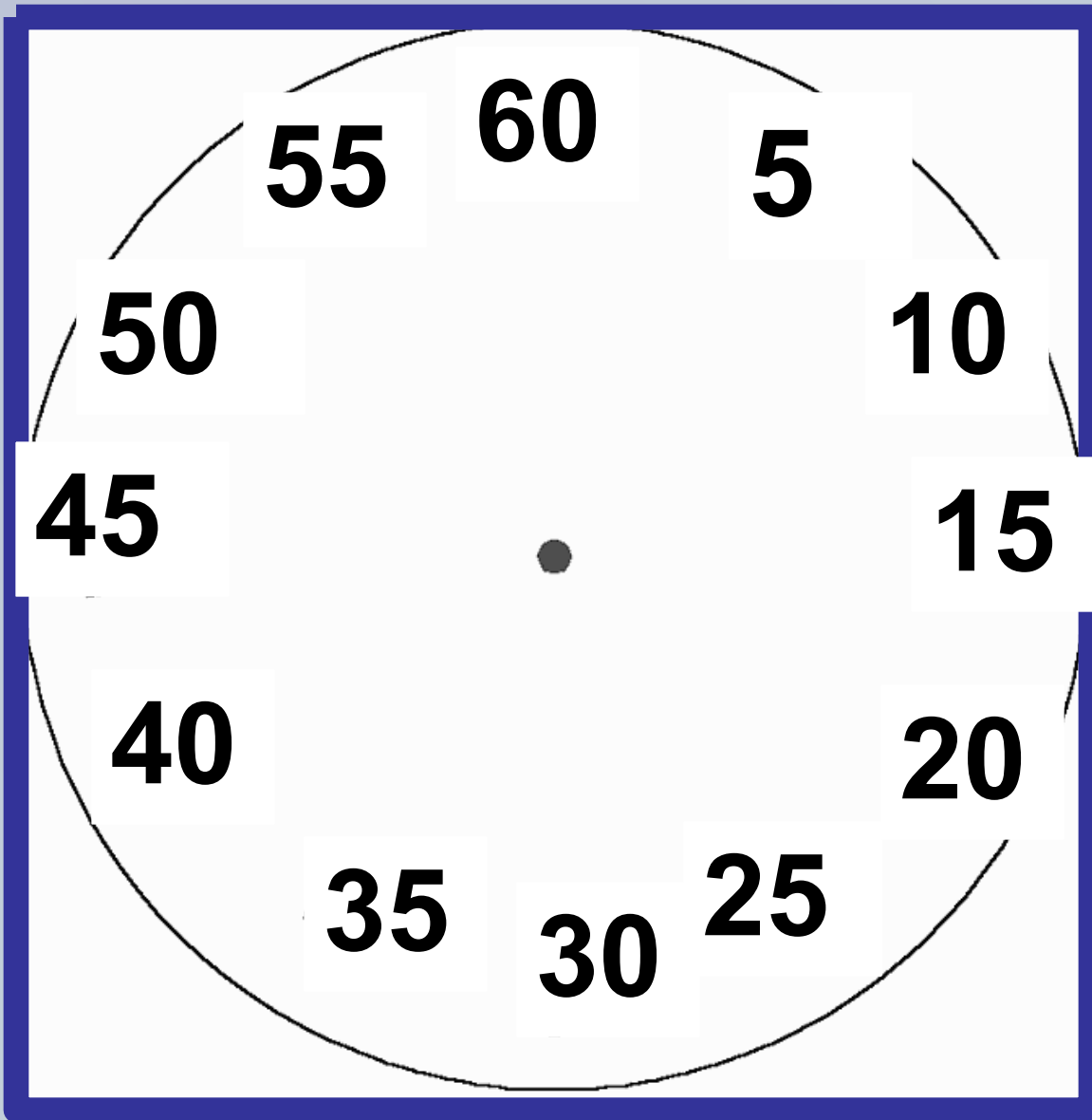


Each number on a clock represents 5 minutes.

Replacing the numbers with multiples of 5 will help you see why there are 60 minutes in an hour.

Created by Gwendolyn Best





Each number on a clock represents 5 minutes.

Replacing the numbers with multiples of 5 will help you see why there are 60 minutes in an hour.



What time will it be 1 hour later?

3:17 PM

4:17 PM

11:53 PM

12:53 AM

7:43 PM

8:43 PM

2:51 PM

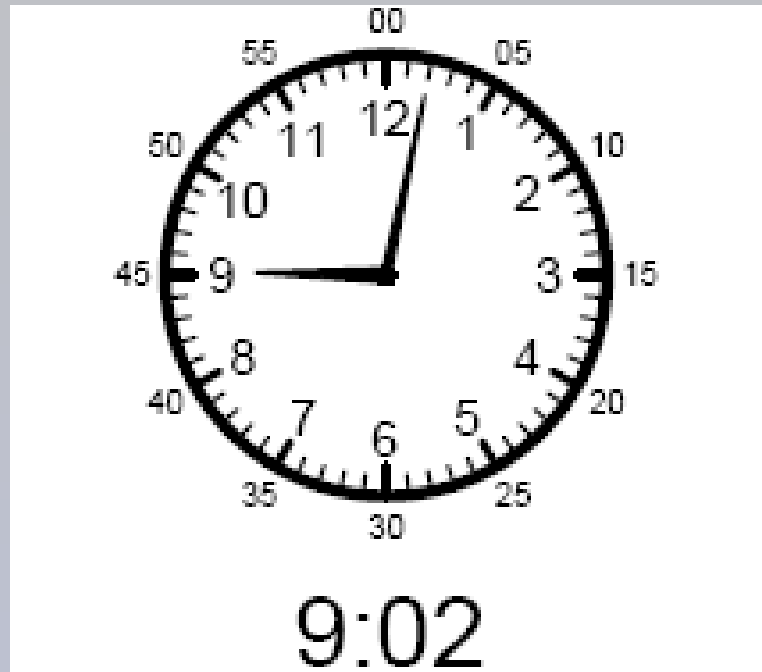
3:51 PM

EASY PATTERN

Created by Gwendolyn Best

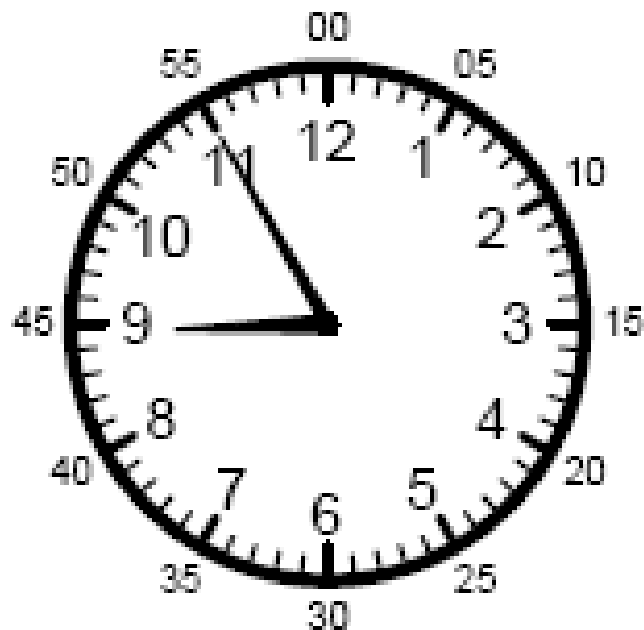


What time will it be 15 minutes later?



If we add 15 minutes to the two minutes we have, the time will be
9:17

What time will it be 15 minutes later?



8:55

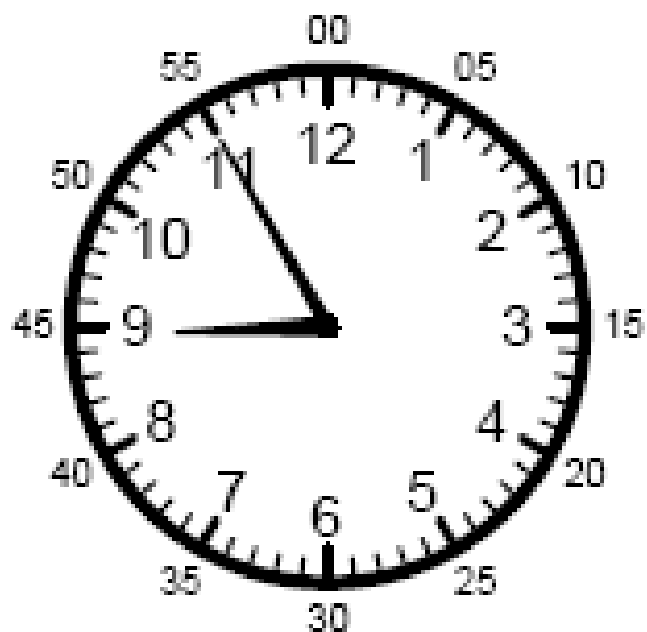
If we add 15 minutes to the 55 minutes we have, the time will be **8:70**

Only 60 minutes in an hour

Simply adding will not work.

Created by Gwendolyn Best

What time will it be 15 minutes later?



8:55

In 5 minutes it will be 9:00.

We still have 10 more minutes

In 10 more minutes, it will be 9:10 or “ten minutes after 9”

What time will it be
15 minutes later?

3:17 PM

3:32 PM

11:53 PM

12:08 AM

7:47 PM

8:02 PM

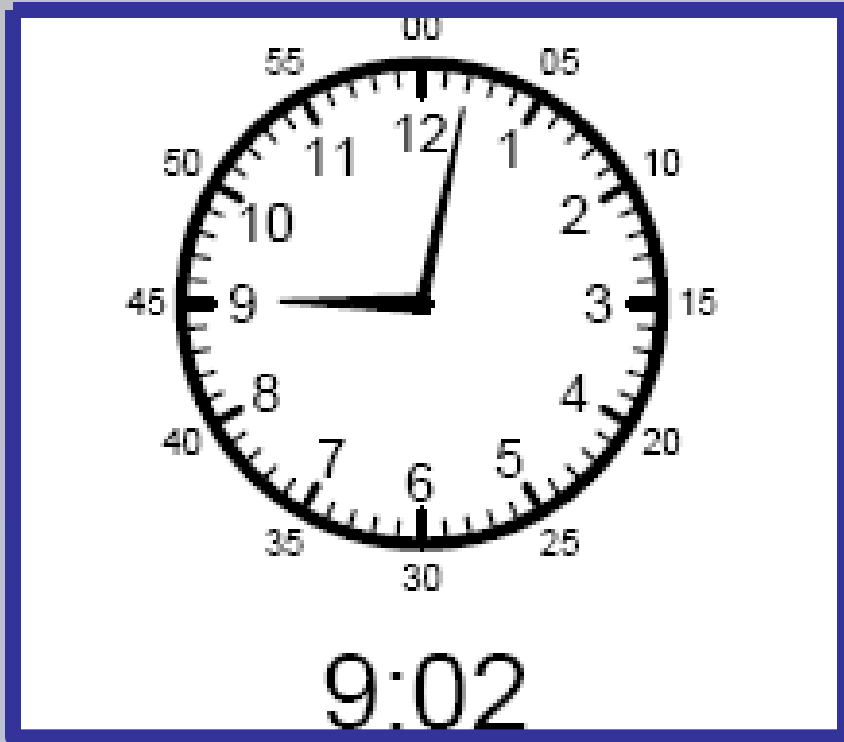
2:51 PM

3:06 PM

Created by Gwendolyn Best



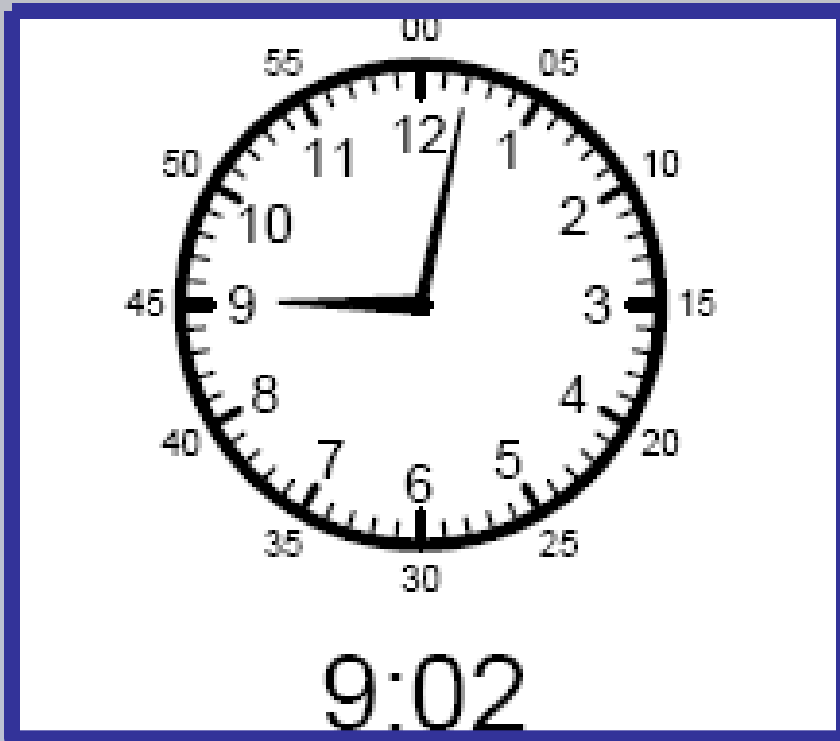
Let's Try Something More Challenging



What time will it be
in

2 hours & 7 min.

What time will it
be *2 hours & 7
minutes* later?



What time will it be
in *2 hours*?

11:02

Now add *7 min.*

That makes the time

11:09

What time will it be
2 hours and 7 minutes later?

3:17 PM

5:24 PM

10:51 AM

12:58 PM

7:43 AM

9:50 AM

2:51 PM

4:58 PM

Created by Gwendolyn Best



Time Word Problems

- Janice started reading a great book at 6:13pm. She finished at 9:28pm. How long did she spend reading?
- HINT: Count up the hours and then the minutes.
- 7:13, 8:13, 9:13 = **3 hours**
- From 9:13 to 9:28 is **15 minutes**



- Brooke left home to visit her grandmother at 7:13 a.m. Her bike ride lasted 18 minutes. What time did she arrive?

HINT: If it had taken 20 minutes she would have arrived at 7:33, count back 2 minutes

After 10 minutes it is 7:23

After 10 more minutes it would be 7:33

Take two minutes away, and it is 7:31

Time Word Problems
Created by Gwendolyn Best



Time Word Problems

Students arrive at school at 8:30 a.m. They get back on the buses around 3:15p.m. How long is the school day?

- Let's take it step by step:
- **8:30 to 2:30 would be 6 hours.**
- **Now add the 45 remaining minutes**
- **The total is 6 hours and 45 minutes**



Let's Try This Problem Another Way

- Students depart the buses at 8:30 a.m. They get back on the buses around 3:15p.m. How long is the school day?
- You could also say from 8:30 – 3:30 is 7 hours.
- Then subtract the minutes as you count back from 3:30 to 3:15. This will give you a total of 6 hours 45 minutes.



Elapsed Time Practice

#1

Jonas left home at 10:15 a.m.
to head to the pool. He
arrived at 10:37a.m.

- How long was his ride?



Elapsed Time Practice

#2

At 4:33 Shelly left the grocery store. She spent 1 hour and 16 minutes shopping.

What time did she arrive at the store?



- Devin jogged with his dog from 1:14 p.m. to 3:03 p.m. He stopped for a 15 minute break. How long did he spend jogging?



Elapsed Time Practice

#4

- Oprah and Gayle left Chicago at 8:00 a.m. and arrived in Cleveland at 11:43 a.m.
- They stopped for lunch and were back on the road at 1:15 p.m.
- They arrived in Erie, PA at 9:16 p.m.
- How much time did they spend driving?
- How long was their lunch break?



Elapsed Time Practice #5



- The prom decorating committee arrived at the high school at 4:30 to set up. The prom started at 7:30p.m. and ended at 1:00 a.m. The decorating committee left when the prom ended.
- How much time did the committee members spend at the school on prom night?
- What information in this problem is not needed?

Let's Check Our Answers



Elapsed Time Practice

#1

Jonas left home at 10:15 a.m.
to head to the pool. He
arrived at 10:37a.m.

- How long was his ride?

22 minutes



Elapsed Time Practice

#2

At 4:33 p.m. Shelly left the grocery store. She spent 1 hour and 16 minutes shopping.

What time did she arrive at the store?

Arrival Time 3:17p.m.



Elapsed Time Practice

3

- Devin jogged with his dog from 1:14 p.m. to 3:03 p.m. He stopped for a 15 minute break. How long did he spend jogging?

1 hour 34 minutes

Created by Gwendolyn Best



Elapsed Time Practice

#4

They drove 11 hrs 44 min

- Oprah and Gayle left Chicago at 8:00 a.m. and arrived in Cleveland at 11:43 a.m.
- They stopped for lunch and were back on the road at 1:15 p.m.
- They arrived in Erie, PA at 9:16 p.m.
- How much time did they spend driving?
- How long was their lunch break?

Lunch lasted 1 hr 32 min

Created by Gwendolyn Best



Elapsed Time Practice #5



- How much time did the committee members spend at the school on prom night?

8 hrs 30 min

- What information in this problem is not needed?

The prom started at 7:30p.m.

More Problems to Solve

[click here](#)

