



# 2017-2018 Delaware Dropout Summary Statistics

June 2019



*Report Prepared by:*

Delaware Department of Education  
401 Federal Street, Suite 2  
Dover, Delaware 19901

### **State Board of Education**

Whitney Sweeney., President  
Dr. Audrey Noble, Vice President  
Nina Lou Bunting  
Candice Fifer  
Vincent Lofink  
Wali W. Rushdan, II  
Rev. Provey Powell, Jr.  
Lea Wainwright  
Dorcas Olatunji  
Jenna Ahner, Executive Director  
Susan Bunting, Executive Secretary

### **Officers of the Department of Education**

Susan Bunting  
Secretary of Education  
  
Chuck Longfellow  
Associate Secretary  
Operations Support

The Department of Education is an equal opportunity employer. It does not discriminate on the basis of race, color, religion, national origin, sex, sexual orientation, gender identity, marital status, disability, age, genetic information, or veteran's status in employment or its programs and activities. Inquiries should be directed to the Department's Human Resource Officer, 401 Federal Street, Suite 2, Dover, Delaware 19901. Telephone Number: (302) 735-4030.

#### **Ensuring Confidentiality of Individual Student Data**

The Delaware Department of Education is legally required to protect the confidentiality of data that could be used to identify individual students. Legal requirements for protecting the data are detailed in the Family Education Rights and Privacy Act (FERPA) (20 U.S.C. § 1232G; 34 CFR Part 99). FERPA requires that these data be protected to ensure they cannot be used to identify the attributes of any individual student. Beyond the natural barriers to precise identification, including differential time frames and net transfer effects, additional disclosure mitigation methods have been applied to these data to ensure confidentiality.

## Executive Summary

The Delaware Department of Education (DDOE) report on dropouts is from data collected annually. Delaware collects data from all public schools including grades 7 through 12, but calculates the yearly dropout rate from grades 9 through 12, as is prescribed by the National Center for Educational Statistics (NCES), which provides data to the federal reporting system.

In accordance with NCES requirements, Delaware uses the *event dropout rate*, which measures the proportion of students who drop out in a single school year. This is the rate the State has reported since 1994. See Appendix A for additional details about the dropout calculation.

This report does not contain data reflecting private, parochial, or home school students in Delaware. The State does gather information from families that home school their children as well as from private schools, but only does so to verify the transfer of a student from public to private and home schools.

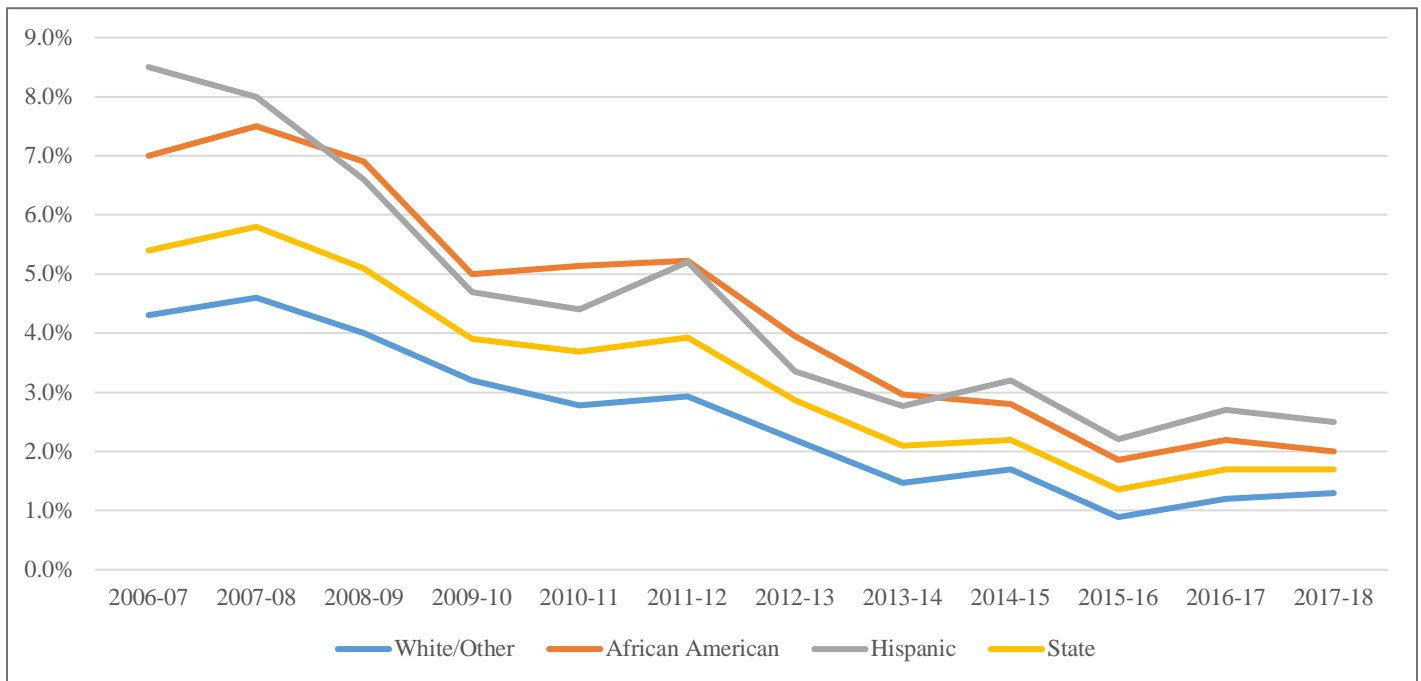
## Highlights

- Last year, out of 41,593 students enrolled in grades 9-12, 699 students left school.
- The statewide annual dropout rate for school year 2017-2018 was 1.68%. This is a slight decrease from school year 2016-2017 when the dropout rate was 1.71%.
- Of the 699 dropouts, 61.8% were male and 38.2% were female.
- The largest number of dropouts were from students enrolled in the 10th grade (215 students). Students enrolled in 12th grade represented the lowest proportion of students who dropped out (116 students).
- Academic, personal and economic reasons were cited by students as the reasons they dropped out.

**Table 1**  
**Dropout Summary Statistics, 2015-2018**

	15-16 Dropout Rate	16-17 Dropout Rate	17-18 Dropout Rate
<b>Total Dropouts</b>	547	700	699
<b>Total Rate</b>	1.36%	1.71%	1.68%
<u>Sex</u>			
Male	1.7%	2.0%	2.0%
Female	1.0%	1.4%	1.3%
<u>Race/Ethnicity</u>			
African American	1.9%	2.2%	2.0%
Asian American	0.2%	0.3%	0.5%
Hispanic or Latino	2.2%	2.7%	2.5%
Multi-Racial	0.8%	1.5%	1.2%
Native American	2.7%	2.4%	4.2%
Native Hawaiian/Pacific Islander	2.2%	2.0%	2.0%
White	0.9%	1.2%	1.3%
<u>Age</u>			
Less than 15	0.2%	0.1%	0.0%
Age 15	0.7%	0.2%	0.5%
Age 16	1.2%	1.3%	1.4%
Age 17 and over	3.5%	5.8%	3.9%

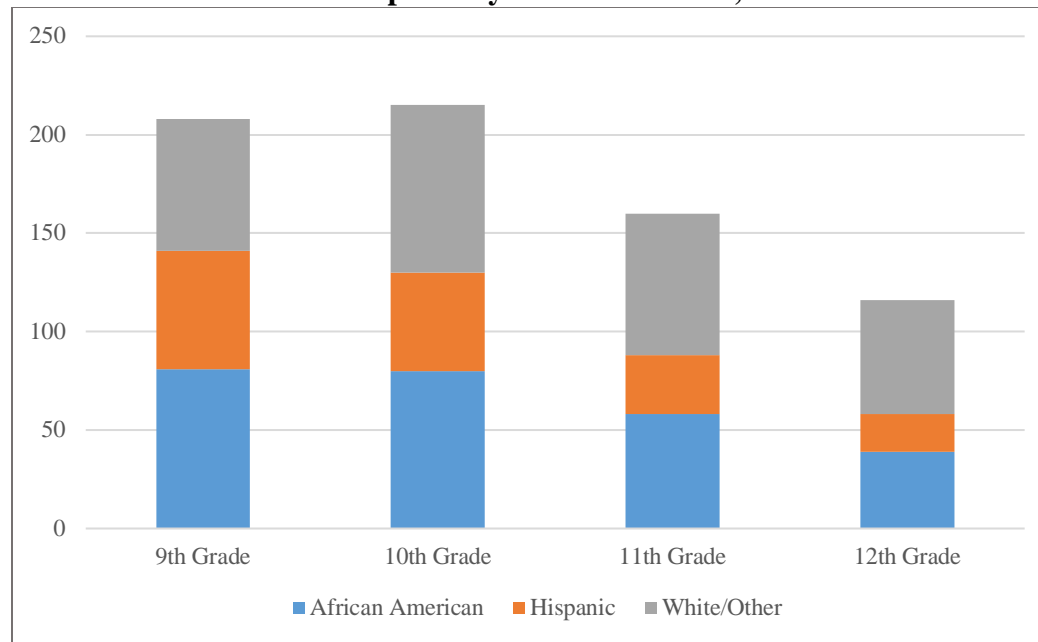
**Figure 1**  
**Delaware Dropout Summary Statistics, 2006-2018**



**Table 2**  
**Dropouts by Race and Grade, 2017-2018**

Grade	African American			Hispanic or Latino			White/Other			All		
	Total Students	Dropout Students	Dropout Rate	Total Students	Dropout Students	Dropout Rate	Total Students	Dropout Students	Dropout Rate	Total Students	Dropout Students	Dropout Rate
9	3,874	81	2.1%	2,061	60	2.9%	5,982	67	1.1%	11,917	208	1.7%
10	3,317	80	2.4%	1,745	50	2.9%	5,494	85	1.5%	10,556	215	2.0%
11	3,057	58	1.9%	1,421	30	2.1%	5,262	72	1.4%	9,740	160	1.6%
12	2,890	39	1.3%	1,241	19	1.5%	5,249	58	1.1%	9,380	116	1.2%
<b>Total</b>	<b>13,138</b>	<b>258</b>	<b>2.0%</b>	<b>6,468</b>	<b>159</b>	<b>2.5%</b>	<b>21,987</b>	<b>282</b>	<b>1.3%</b>	<b>41,593</b>	<b>699</b>	<b>1.7%</b>

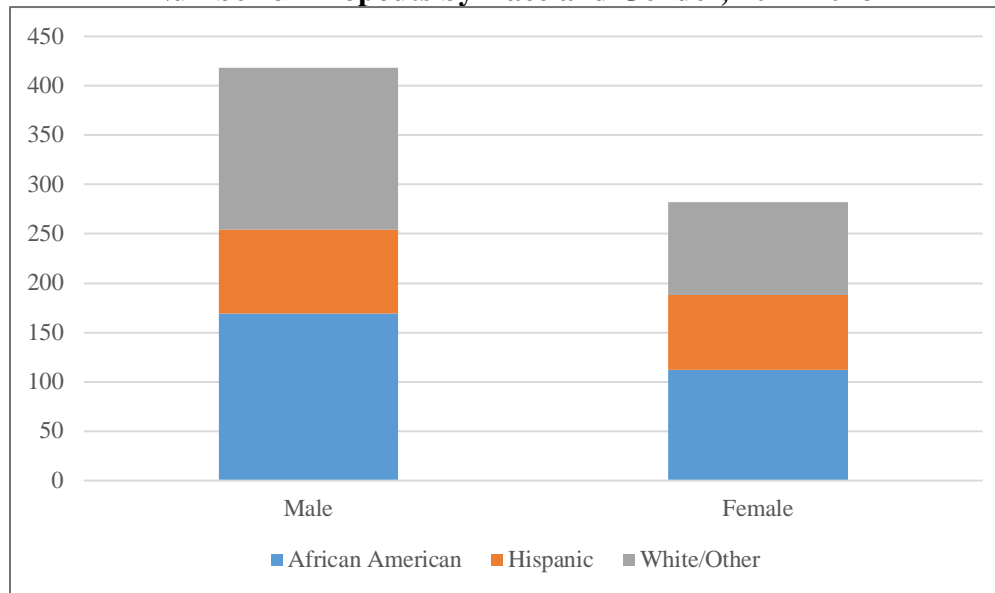
**Figure 2**  
**Number of Dropouts by Race and Grade, 2017-2018**



**Table 3**  
**Dropouts by Race and Gender, 2017-2018**

Gender	African American			Hispanic or Latino			White/Other			All		
	Total Students	Dropout Students	Dropout Rate	Total Students	Dropout Students	Dropout Rate	Total Students	Dropout Students	Dropout Rate	Total Students	Dropout Students	Dropout Rate
Male	6,640	145	2.2%	3,303	111	3.4%	11,362	176	1.5%	21,305	432	2.0%
Female	6,498	113	1.7%	3,165	48	1.5%	10,625	106	1.0%	20,288	267	1.3%
<b>Total</b>	<b>13,138</b>	<b>258</b>	<b>2.0%</b>	<b>6,468</b>	<b>159</b>	<b>2.5%</b>	<b>21,987</b>	<b>282</b>	<b>1.3%</b>	<b>41,593</b>	<b>699</b>	<b>1.7%</b>

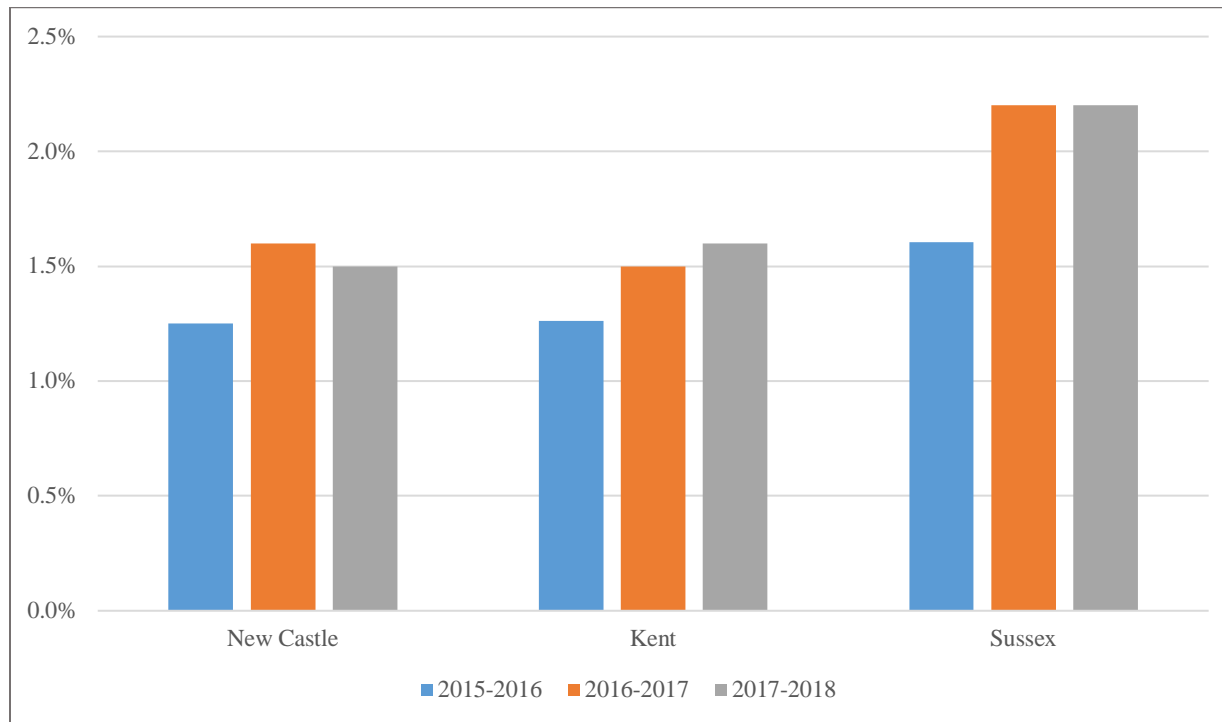
**Figure 3**  
**Number of Dropouts by Race and Gender, 2017-2018**



**Table 4**  
**Dropout Summary by County, 2015-2018**

County	2015-2016 Dropout Rate	2016-2017 Dropout Rate	2017-2018 Dropout Rate
New Castle	1.3%	1.6%	1.5%
Kent	1.3%	1.5%	1.6%
Sussex	1.6%	2.2%	2.2%

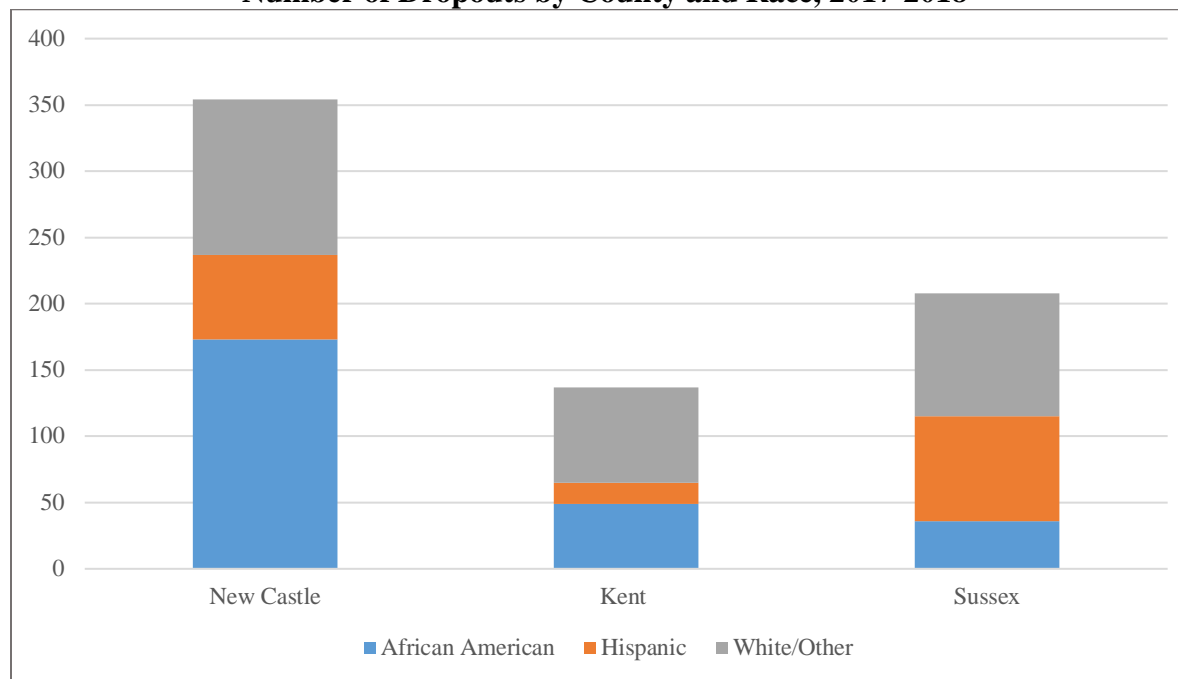
**Figure 4**  
**Dropout Summary by County 2015-2018**



**Table 5  
Dropouts by County and Race, 2017-2018**

County	African American			Hispanic or Latino			White/Other			All		
	Total Students	Dropout Students	Dropout Rate	Total Students	Dropout Students	Dropout Rate	Total Students	Dropout Students	Dropout Rate	Total Students	Dropout Students	Dropout Rate
New Castle	8,371	173	2.1%	3878	64	1.7%	11,258	117	1.0%	23,507	354	1.5%
Kent	3,005	49	1.6%	716	16	2.2%	4,789	72	1.5%	8,510	137	1.6%
Sussex	1,762	36	2.0%	1874	79	4.2%	5,940	93	1.6%	9,576	208	2.2%
<b>Total</b>	<b>13,138</b>	<b>258</b>	<b>2.0%</b>	<b>6,468</b>	<b>159</b>	<b>2.5%</b>	<b>21,987</b>	<b>282</b>	<b>1.3%</b>	<b>41,593</b>	<b>699</b>	<b>1.7%</b>

**Figure 5  
Number of Dropouts by County and Race, 2017-2018**

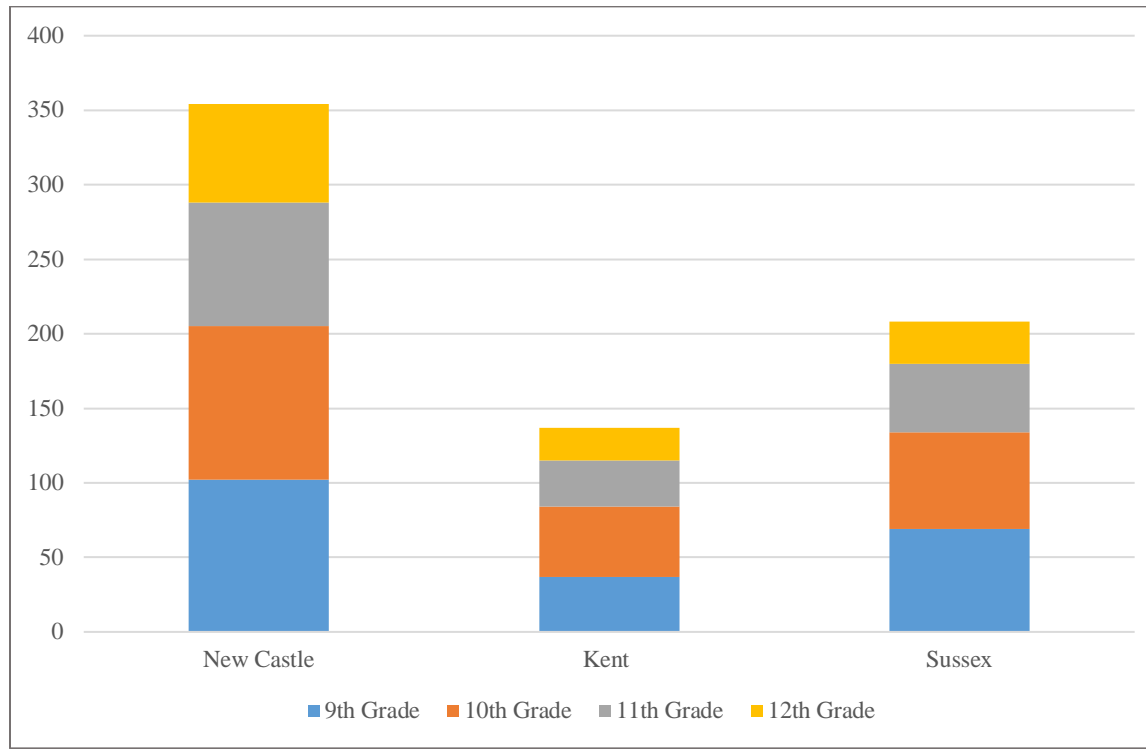




**Table 6**  
**Dropouts by County and Grade, 2017-2018**

County	9th			10th			11th			12th			Total Students		
	Total Students	Dropout Students	Dropout Rate	Total Students	Dropout Students	Dropout Rate	Total Students	Dropout Students	Dropout Rate	Total Students	Dropout Students	Dropout Rate	Total Students	Dropout Students	Dropout Rate
New Castle	6,795	102	1.5%	5,812	103	1.8%	5,486	83	1.5%	5,414	66	1.2%	23,507	354	1.5%
Kent	2,488	37	1.5%	2,181	47	2.2%	1,905	31	1.6%	1,936	22	1.1%	8,510	137	1.6%
Sussex	2,634	69	2.6%	2,563	65	2.5%	2,349	46	2.0%	2,030	28	1.4%	9,576	208	2.2%
<b>Total</b>	<b>11,917</b>	<b>208</b>	<b>1.7%</b>	<b>10,556</b>	<b>215</b>	<b>2.0%</b>	<b>9,740</b>	<b>160</b>	<b>1.6%</b>	<b>9,380</b>	<b>116</b>	<b>1.2%</b>	<b>41,593</b>	<b>699</b>	<b>1.7%</b>

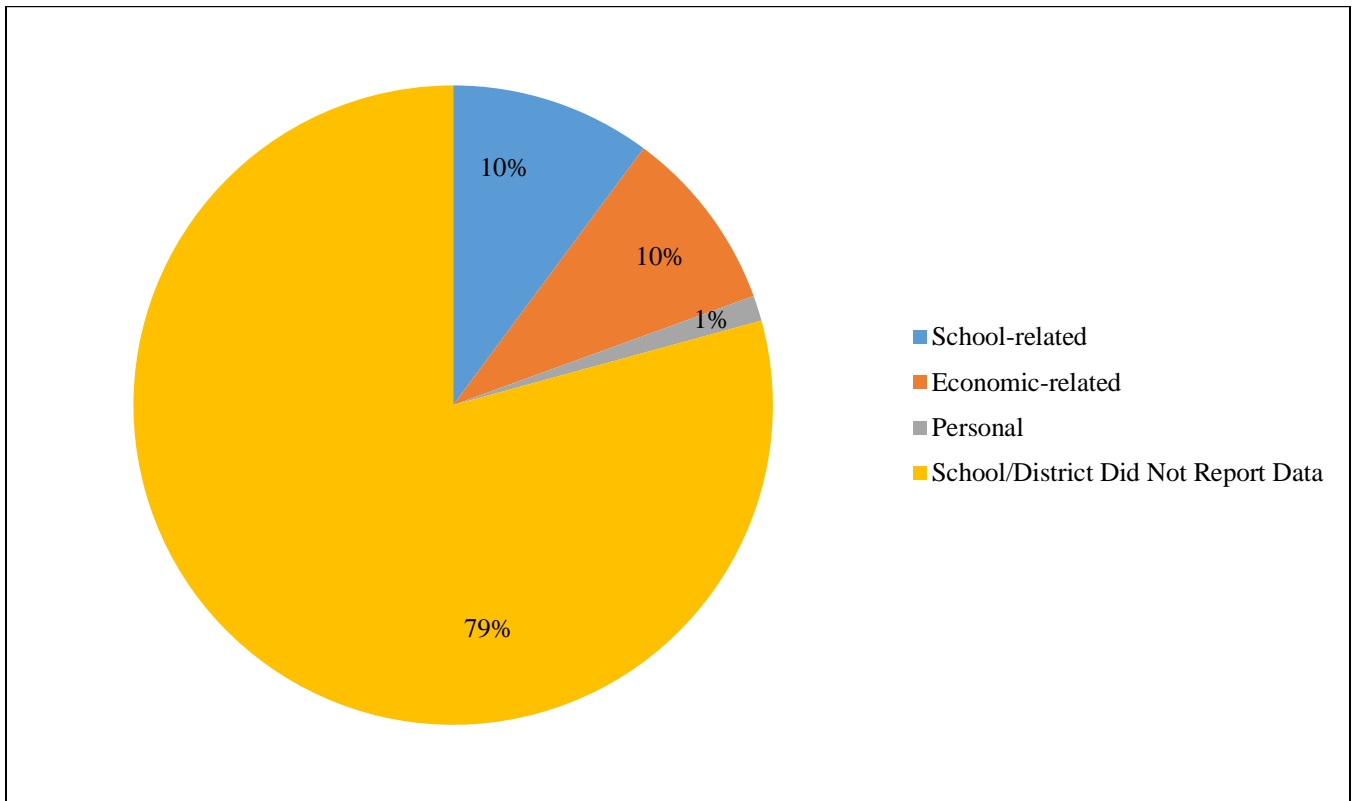
**Figure 6**  
**Number of Dropouts by County and Grade, 2017-2018**



**Table 7**  
**Reasons for Dropping Out, 2017-2018**

Reason	Number	Percent
School-Related	71	10.2%
Economic-Related	65	9.3%
Personal	9	1.3%
School/District Did Not Report Data	554	79.3%
<b>Total</b>	<b>699</b>	<b>100%</b>

**Figure 7**  
**Reasons for Dropping Out, 2017-2018**



**Table 8**  
**Annual Dropout Rate by District/Charter, 2015-2018**

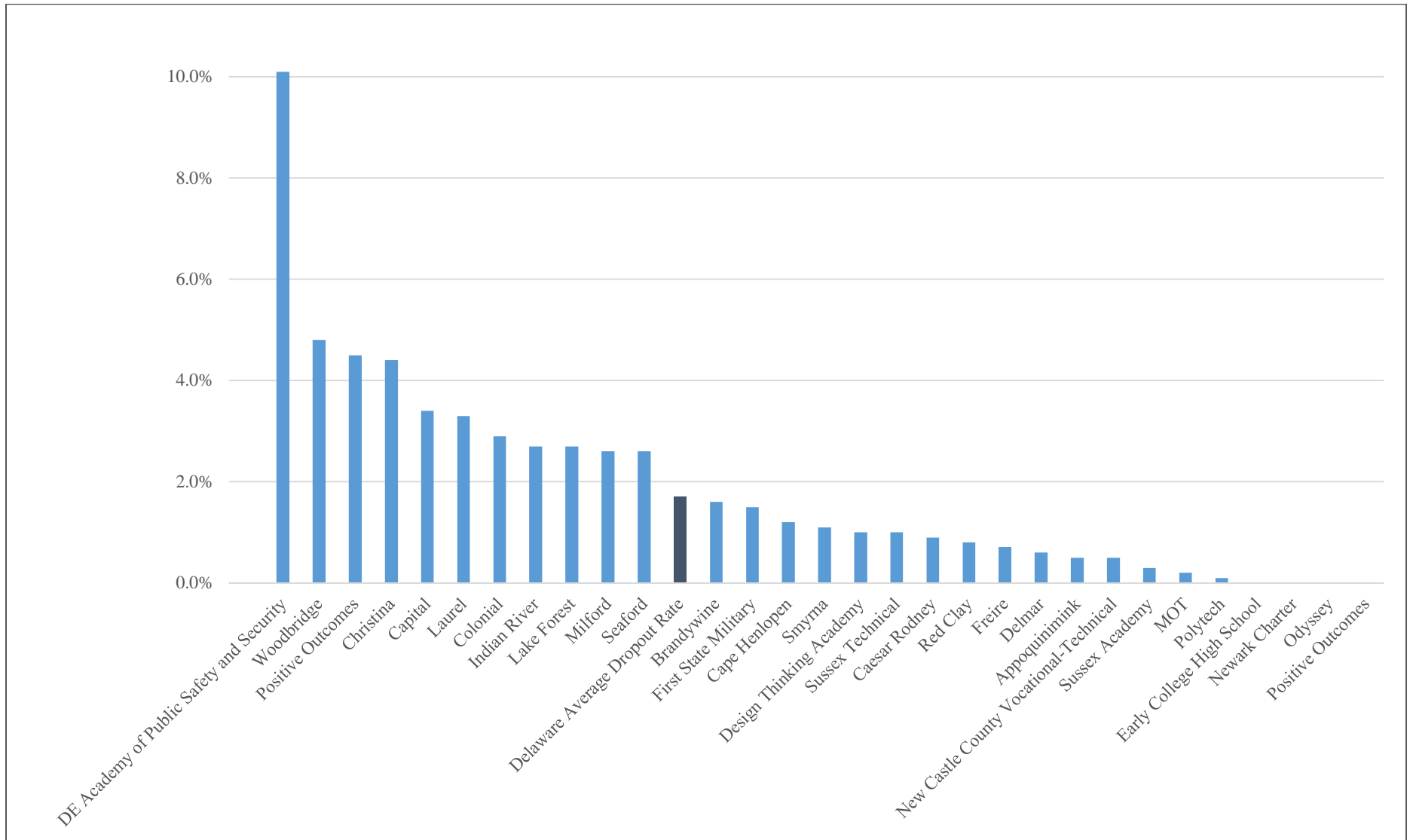
District/Charter	2015-2016 Dropout Rate	2016-2017 Dropout Rate	2017-2018 Dropout Rate
Appoquinimink	0.3%	0.6%	0.5%
Brandywine	1.8%	2.0%	1.6%
Caesar Rodney	0.9%	0.7%	0.9%
Cape Henlopen	0.6%	0.8%	1.2%
Capital	2.7%	2.6%	3.4%
Christina	2.4%	4.3%	4.4%
Colonial	3.1%	3.2%	2.9%
DE Academy of Public Safety and Security	1.0%	3.7%	10.1%
Delaware Design Lab	0.0%	0.0%	1.0%
Delmar	1.1%	0.8%	0.6%
Early College High School	0.0%	1.0%	0.00%
First State Military	2.5%	3.1%	1.5%
Freire	-	0.0%	0.7%
Indian River	2.3%	2.8%	2.7%
Lake Forest	0.8%	2.1%	2.7%
Laurel	4.0%	3.0%	3.3%
Milford	1.1%	3.1%	2.6%
MOT	-	0.0%	0.2%
New Castle County Vocational-Technical	0.3%	0.4%	0.5%
Newark Charter	0.0%	0.0%	0.0%
Odyssey	-	0.0%	0.0%
Polytech	0.1%	1.0%	0.1%
Positive Outcomes	3.1%	0.0%	4.5%
Red Clay (includes Charter School of Wilmington and Delaware Military Academy)	0.9%	1.1%	0.8%
Seaford	1.9%	4.2%	2.6%
Smyrna	1.1%	0.9%	1.1%
Sussex Academy	0.5%	0.7%	0.3%
Sussex Technical	0.1%	0.6%	1.0%
Woodbridge	3.5%	3.2%	4.8%

Note: Special Schools and ILCs **are included** in district dropout summary statistics.

“-“ denotes schools who’s prior dropout rates could not be calculated.

DE Academy of Public Safety and Security closed prior to validation of dropout data.

**Figure 8**  
**Annual Dropout Rate by District Charter, 2017-2018**



*Note: DE Academy of Public Safety and Security closed prior to validation of dropout data.*

**Table 9**  
**Annual Dropout Rate by School, 2015-2018**

High Schools	2015-2016 Dropout Rate	2016-2017 Dropout Rate	2017-2018 Dropout Rate
A. I. duPont High	0.9%	0.8%	0.6%
Appoquinimink High	0.4%	0.5%	0.7%
Brandywine High	2.2%	3.1%	2.5%
Brennen School	-	0.0%	0.0%
Caesar Rodney High	0.9%	0.7%	0.9%
Callaway School of the Arts	0.0%	0.0%	0.0%
Cape Henlopen High	0.6%	0.9%	1.2%
Charter School of Wilmington	0.1%	0.0%	0.1%
Christiana High	1.4%	6.2%	4.1%
Concord High	2.6%	2.0%	1.4%
Conrad School of Science	0.0%	0.0%	0.0%
Delaware Academy of Public Safety and Security	1.0%	3.7%	10.1%
Delaware Military Academy	0.2%	0.0%	0.2%
Delaware School for the Deaf	-	0.0%	0.0%
Delcastle Technical High	0.2%	0.7%	0.8%
Delmar High	1.1%	0.8%	0.6%
Design Thinking Academy	0.0%	0.0%	1.0%
Dickinson High	3.5%	5.9%	4.3%
Dover High	1.5%	2.3%	2.7%
Early College High at DSU	0.0%	1.0%	0.0%
Ennis (Howard T.)	-	0.0%	0.0%
First State Military	-	3.1%	1.5%
First State School	-	0.0%	0.0%
Freire Charter	-	0.0%	0.7%
Glasgow High	2.4%	3.4%	2.9%
Hodgson Vocational Technical High	0.4%	0.3%	0.4%
Howard High School of Technology	0.3%	0.6%	0.9%
Indian River High	0.7%	1.6%	1.8%
John Charlton School	-	0.0%	0.0%
Kent County Community	-	0.0%	1.8%

High School	2015-2016 Dropout Rate	2016-2017 Dropout Rate	2017-2018 Dropout Rate
Kent County Secondary	-	12.5%	21.6%
Lake Forest High	0.8%	2.1%	2.7%
Laurel High	4.0%	3.0%	3.3%
Leach School	-	4.8%	0.0%
McKean High	1.3%	2.1%	0.8%
Meadowood Program	-	0.0%	0.0%
Middletown High	0.2%	0.7%	0.3%
Milford High	1.1%	3.1%	2.7%
MOT Charter School	0.0%	0.0%	0.2%
Mount Pleasant High	0.7%	1.2%	1.2%
Newark Charter	0.0%	0.0%	0.0%
Newark High	1.2%	2.1%	4.6%
Odyssey Charter	-	0.0%	0.0%
Polytech High	0.1%	1.0%	0.1
Positive Outcomes	3.1%	0.0%	4.5%
Pyle (Sarah) Academy		13.2%	0.0%
Seaford High	1.9%	4.2%	2.6%
Smyrna High	1.1%	0.9%	1.1%
St. Georges Technical High	0.1%	0.1%	0.0%
Sussex Academy	0.5%	0.7%	0.3%
Sussex Central High	3.5%	3.7%	3.0%
Sussex Consortium	-	0.0%	1.2%
Sussex Technical High	0.1%	0.6%	1.0%
Wallace Wallin School	-	10.4%	16.3%
William Penn High	2.5%	2.8%	2.3%
Woodbridge High	3.5%	3.2%	4.8%

Note: Special Schools and ILCs **are included** in district dropout summary statistics.

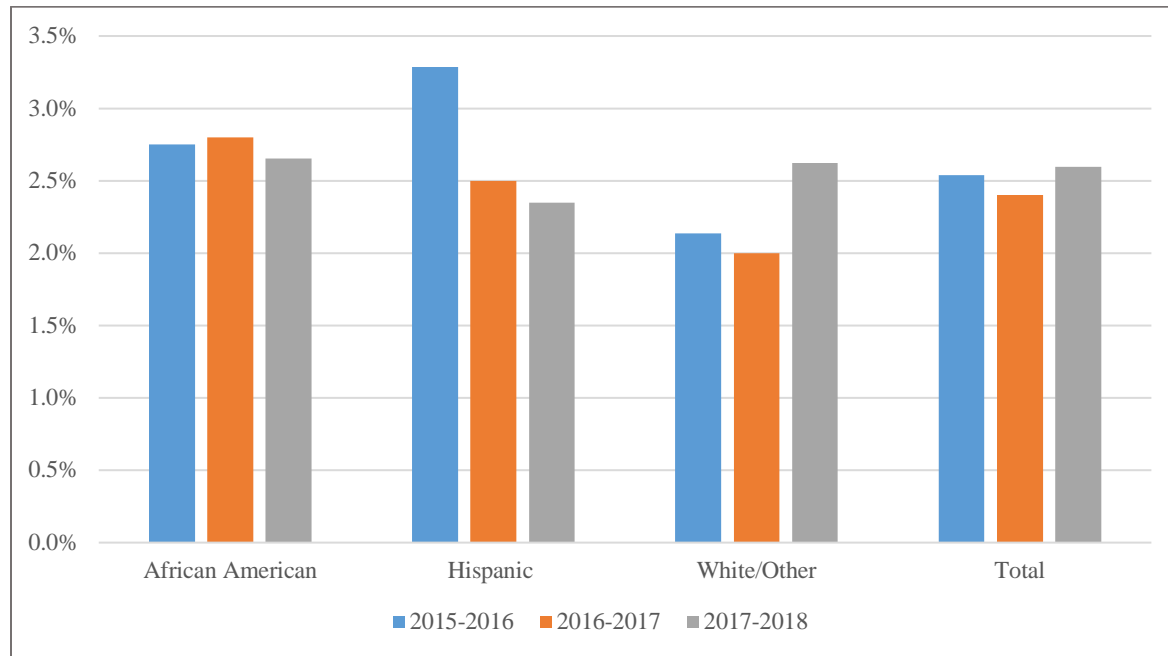
“-“ denotes schools who's prior dropout rates could not be calculated.

DE Academy of Public Safety and Security closed prior to validation of dropout data.

**Table 10**  
**Students with Disabilities Dropout Summary Statistics, 2015-2018**

Race/Ethnicity	2015-2016			2016-2017			2017-2018		
	Total Enrolled	Total Dropout	Dropout Rate	Total Enrolled	Total Dropout	Dropout Rate	Total Enrolled	Total Dropout	Dropout Rate
African American	2,543	70	2.8%	2,580	71	2.8%	2,714	72	2.7%
Hispanic	730	24	3.3%	795	20	2.5%	894	21	2.3%
White/Other	2,713	58	2.1%	2,810	56	2.0%	2,861	75	2.6%
<b>Total</b>	<b>5,986</b>	<b>152</b>	<b>2.5%</b>	<b>6,185</b>	<b>147</b>	<b>2.4%</b>	<b>6,469</b>	<b>168</b>	<b>2.6%</b>

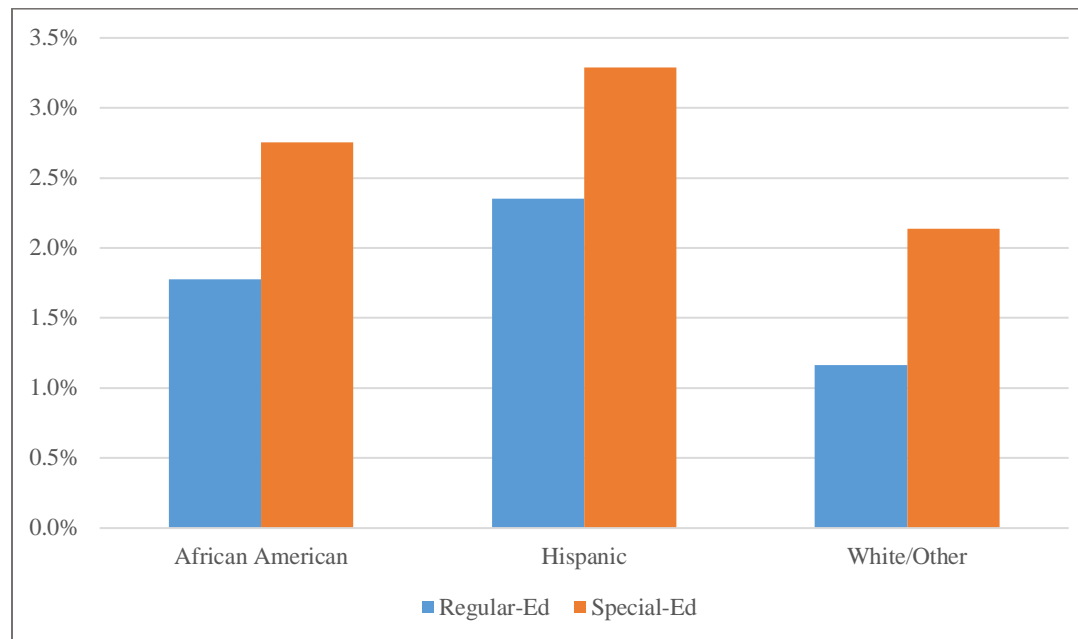
**Figure 9**  
**Students with Disabilities Dropout Summary Statistics, 2015-2018**



**Table 11**  
**Students with Disabilities Dropouts by Race, 2017-2018**

	African American			Hispanic or Latino			White/Other			All		
	Total Students	Dropout Students	Dropout Rate	Total Students	Dropout Students	Dropout Rate	Total Students	Dropout Students	Dropout Rate	Total Students	Dropout Students	Dropout Rate
Regular-Ed	10,595	188	1.8%	5,738	135	2.4%	19,274	224	1.2%	35,607	547	1.5%
Special-Ed	2,543	70	2.8%	730	24	3.3%	2,713	58	2.1%	5,986	152	2.5%
<b>Total</b>	<b>13,138</b>	<b>258</b>	<b>2.0%</b>	<b>6,468</b>	<b>159</b>	<b>2.5%</b>	<b>21,987</b>	<b>282</b>	<b>1.3%</b>	<b>41,593</b>	<b>699</b>	<b>1.7%</b>

**Figure 10**  
**Students with Disabilities Dropouts by Race, 2017-2018**





## *Appendix A*

### Criteria for being identified as a dropout:

- A student who completed the **previous** school year and who did **not** reach his or her 16th birthday by the beginning of the **current** school and did not attend any days of the **current** school year is considered "dropout underage" from the receiving school. This student should be coded in eSchoolPLUS as **Dropout-Underage**. This underage dropout should have a withdrawal date that is the same as the entry date (i.e., first day of school of the reporting year).
- A student who completed the **previous** school year and who did reach his or her 16th birthday by the beginning of the **current** school and did not attend any days of the **current** school year is considered "dropout-truancy" from the receiving school. This student should be coded in eSchoolPLUS as **Dropout-Truancy**. This dropout should have a withdrawal date that is the same as the entry date (i.e., first day of school of the reporting year).
- If a student has moved and there is no official documentation that he or she has transferred to another school, he or she is counted as a dropout and code in eSchoolPLUS as **Dropout-Underage or Dropout-Truancy** depending on age.
- A student who transfers to James H. Groves Adult High School during the current school year and is not in attendance (enrolled) by **September 30** of the next school year, is counted as **Dropout-Academic** from the home school.
- A student who transfers to James H. Groves Adult Basic Education (ABE) programs during the current school year is counted as **Dropout-Academic** from the home school.
- An expelled student is counted as a dropout if he or she does not return at the end of the disciplinary period. This student should be coded in eSchoolPLUS as **Dropout-Behavior**.
- A school leaver who has joined the military is counted as a dropout. This student should be coded in eSchoolPLUS as **Dropout-Military**.
- A school leaver who has joined Job Corps is counted as a dropout. This student should be coded in eSchoolPLUS as **Dropout-Employment**.
- A student withdrawn because of truancy is counted as a dropout. This student shall be coded in eSchoolPLUS as **Dropout-Underage or Dropout-Truancy** depending on age. (A student with an active truancy case with the Justice of the Peace Court shall not be withdrawn from eSchoolPLUS.)

### Criteria for not being identified as a dropout:

- A student who remains enrolled in a public school in the State.
- A student who receives a diploma or in the case of a special education student a district or charter school issued "Certificate", or a diploma of alternate achievement standards should not be reported as a dropout.
- A student who transfers to another public or private school should not be reported as a dropout. Documentation of transfer needs to be preserved.
- A student who moves out of state should not be reported as a dropout. Documentation of the move needs to be preserved.
- A student who dies should not be reported as a dropout.
- A school leaver who is in a correctional institution or other state agency placement should not be counted as a dropout.
- A student who leaves the United States is not considered to be a dropout even if the school district cannot document the student's subsequent enrollment in school.