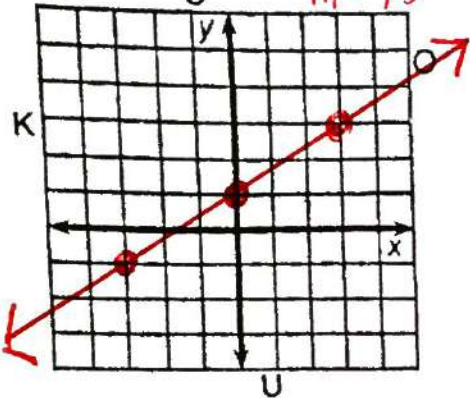


Whom Should You See at the Bank If You Need To Borrow Money?

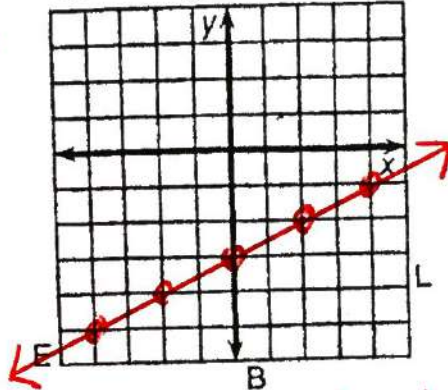
Key

Use the slope and y-intercept to graph each equation below. The graph, if extended, will cross a letter. Print this letter in each box that contains the number of that exercise.

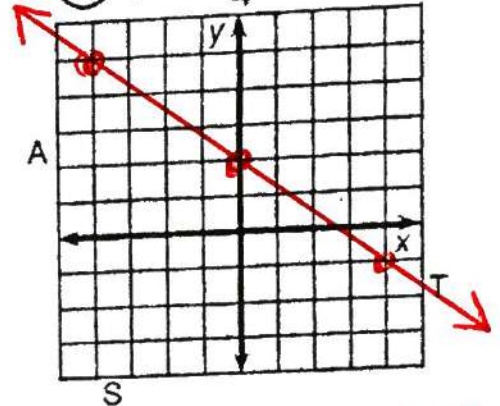
① $y = \frac{2}{3}x + 1$ *b=1, m=2/3*



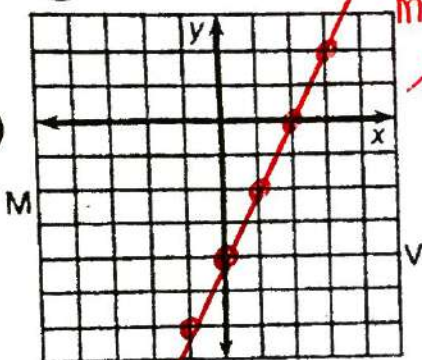
② $y = \frac{1}{2}x - 3$ *b=-3, m=1/2*



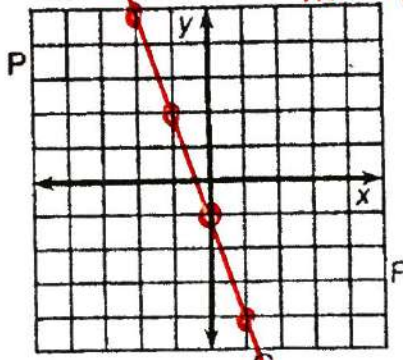
③ $y = -\frac{3}{4}x + 2$ *b=2, m=-3/4*



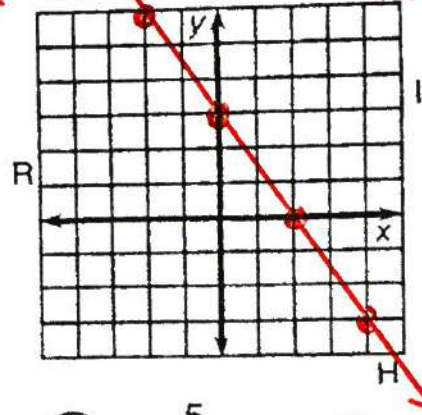
④ $y = 2x - 4$ *b=-4, m=2*



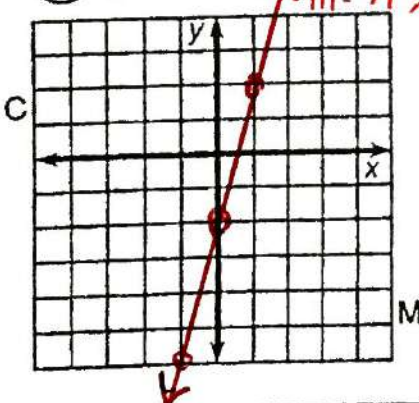
⑤ $y = -3x - 1$ *b=-1, m=-3*



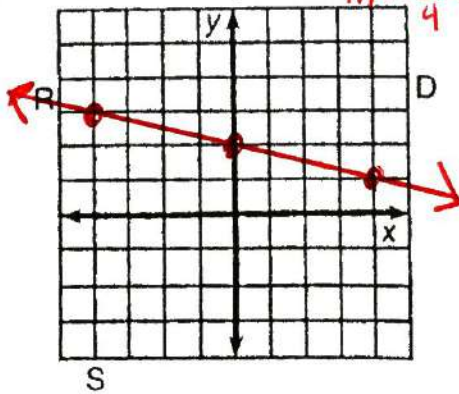
⑥ $y = -\frac{3}{2}x + 3$ *b=3, m=-3/2*



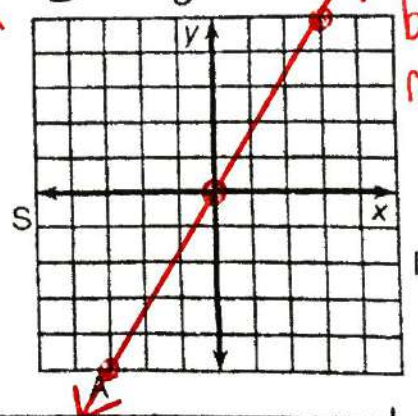
⑦ $y = 4x - 2$ *b=-2, m=4*



⑧ $y = -\frac{1}{4}x + 2$ *b=2, m=-1/4*



⑨ $y = \frac{5}{3}x$ *b=0, m=5/3*



3 6 2 7 1 9 4 9 8 8 9 4 5 2 8
The Loaner Ranger