



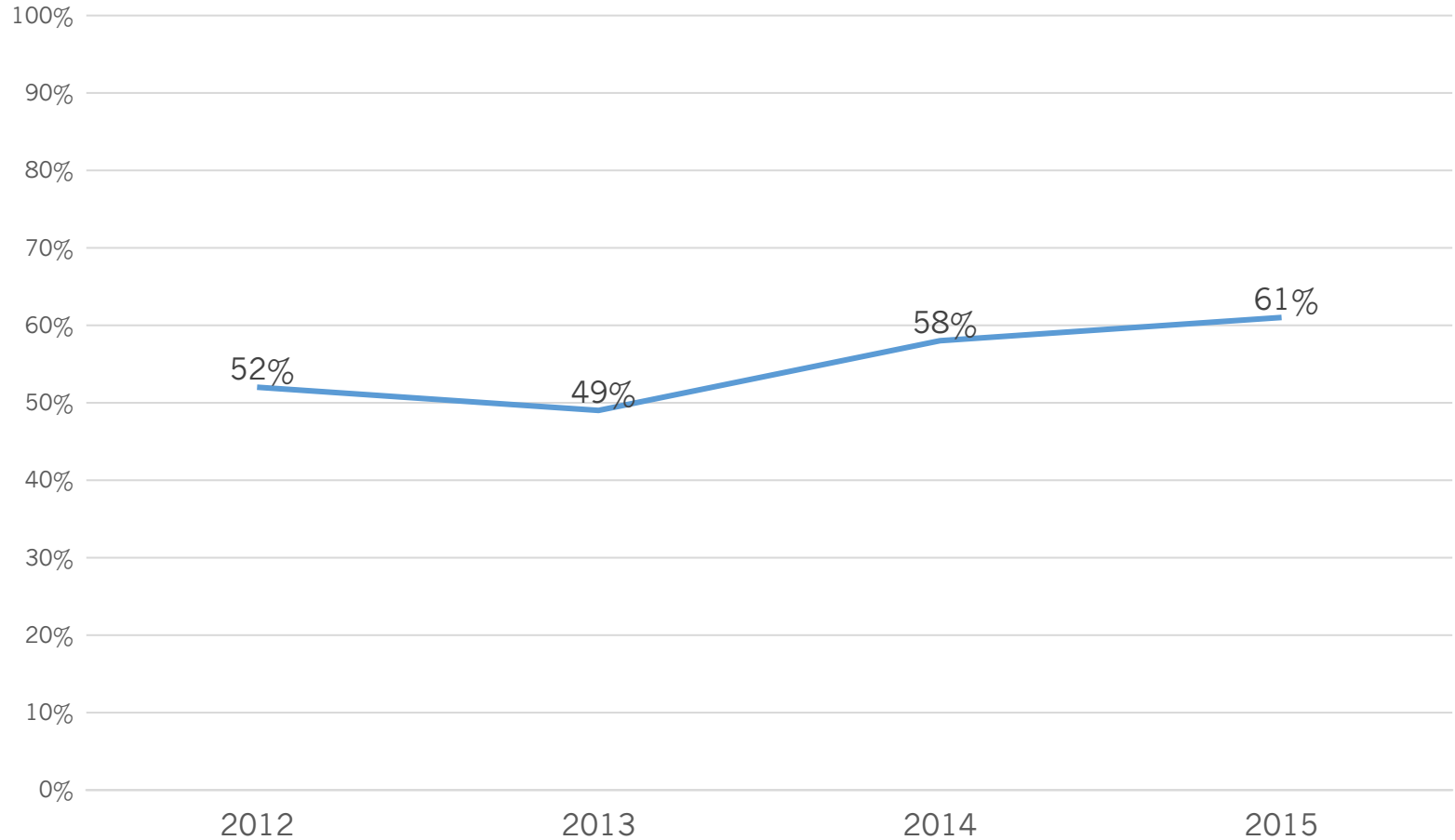
Delaware Goes to College



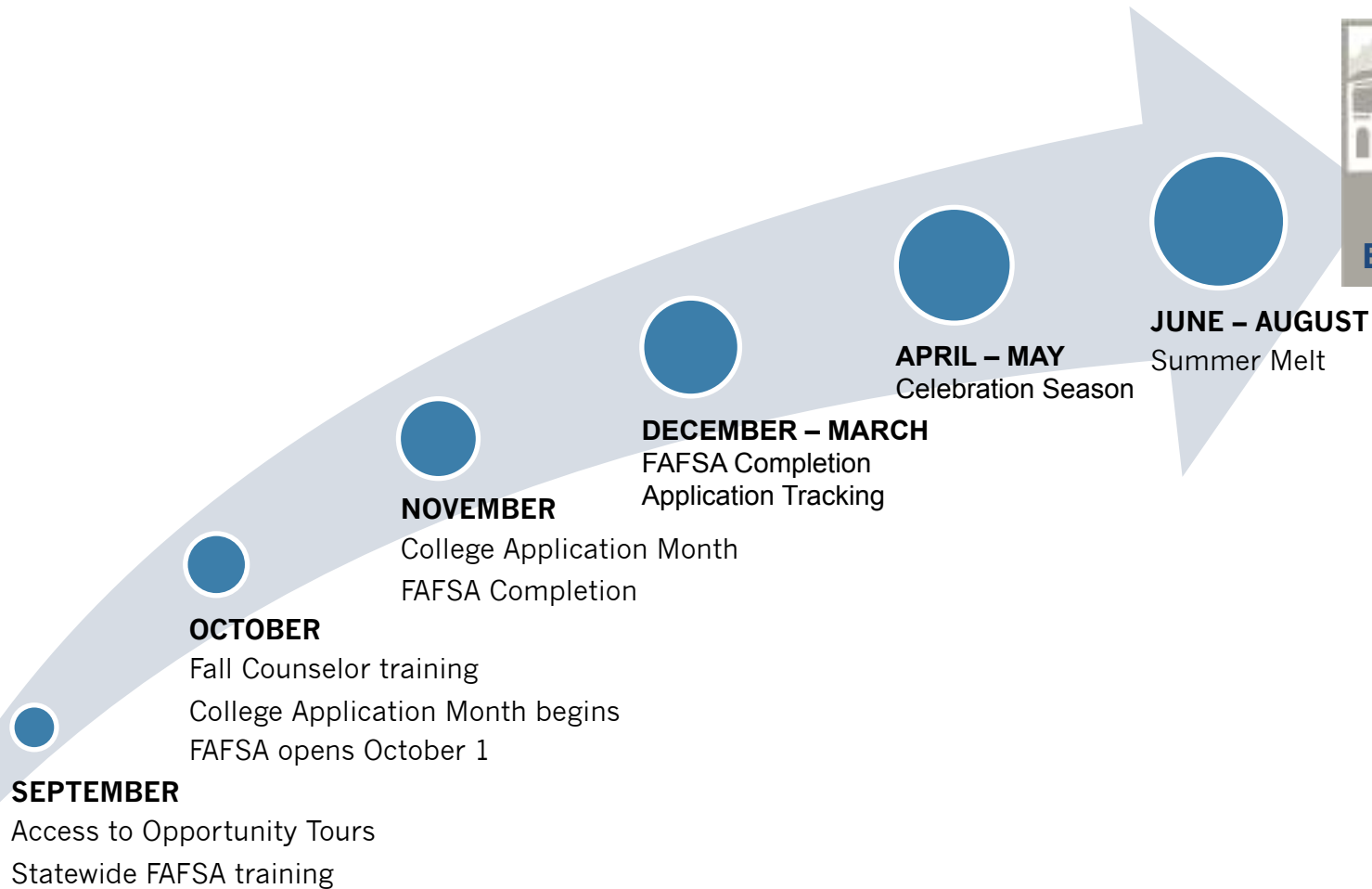
Delaware
Department of Education

College Enrollment on the Rise

Seamless College Enrollment for Delaware Public High School Graduates

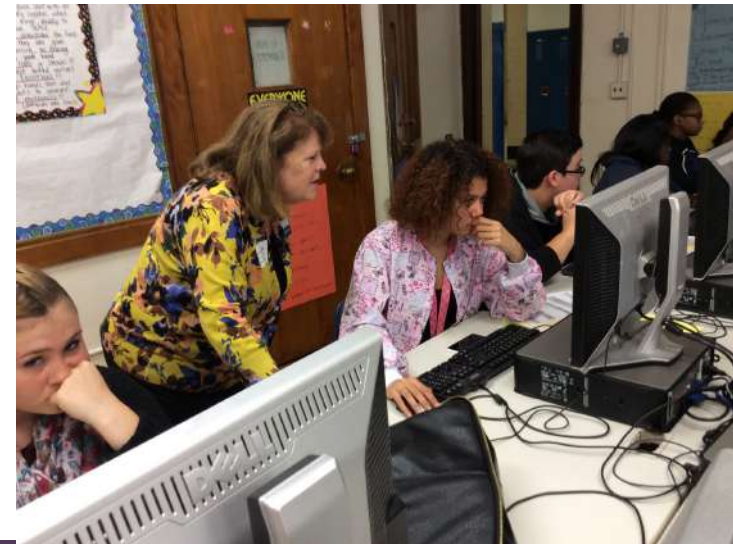


Delaware Goes to College Program Overview



College Application Month

- Mid-October through Mid-November annually
- Each school picks 2–5 days to host its College Application Week (CAW).
- Takes place during the school day, giving students much-needed time to complete applications.
- Six of Delaware's colleges waive applications for Delaware students during this month



Getting to Zero Results

Baseline data:

Class of 2013:

- 18% of students meeting the 1550 SAT benchmark did not apply to college (*College Board*)

Progress data:

2014-2016 Cohorts:

- ❑ College-Ready students Post-Secondary Decisions:
 - 98% enroll in college,
 - 1% enlist in military
 - > 1% chose work/apprenticeship
- ❑ 80% FAFSA completion

COLLEGE REMEDIATION



Why Remediation?

Definition: a math or English developmental course designed to strengthen students' required knowledge and skills to be successful in 1st year college courses

Impact: Students taking remedial courses face lower college graduation rates and higher debt

Highlights from 2017 College Success Report

- College enrollment increased to 61% for class of 2015
- Remediation rate remains flat-41%
- 2017 report takes a deeper dive into our 4 key recommendations to understand potential cause and effect

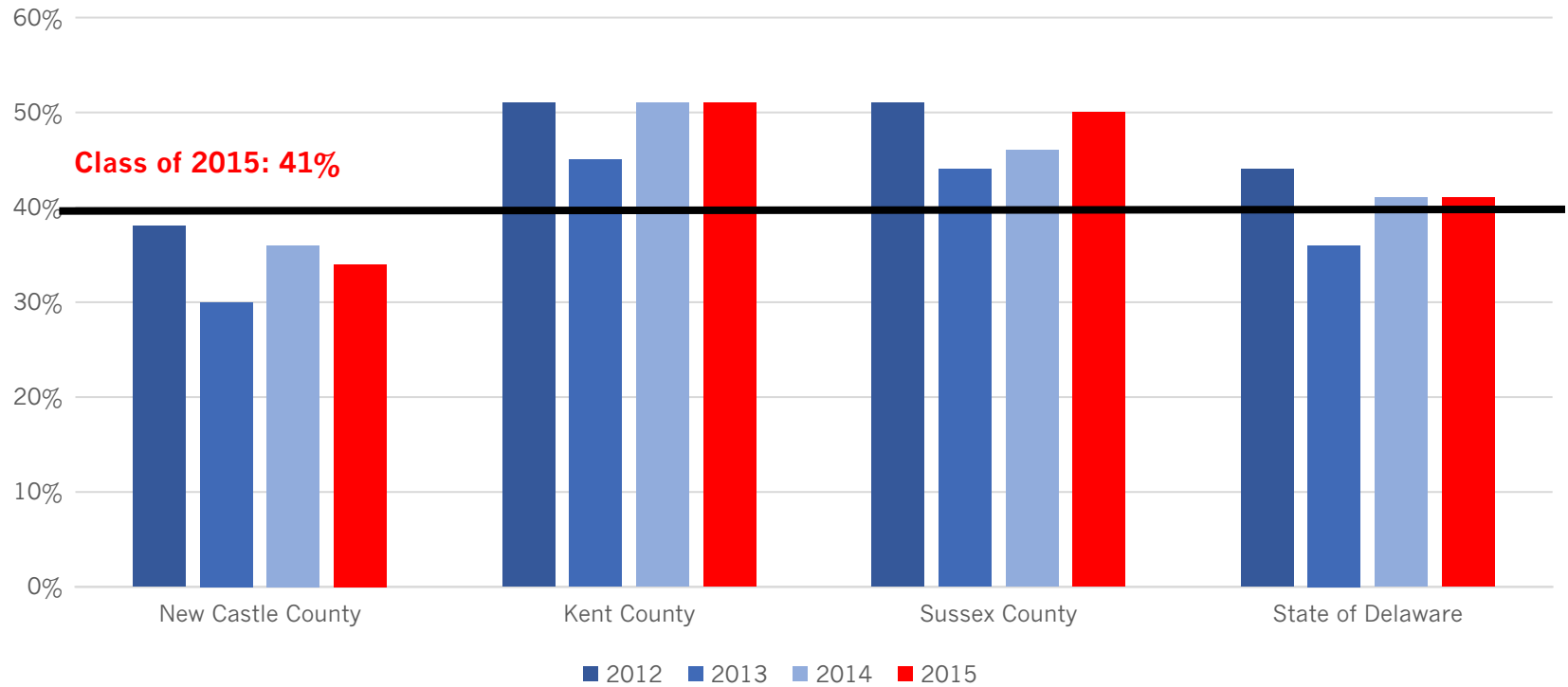
Graduating College and Career Ready?

- All students graduate from high school ready for college-level math courses.
- All students graduate from high school ready for college-level English courses.
- Provide targeted interventions prior to 11th grade for students not meeting college-ready benchmarks.
- Design an accessible and equitable K-12 system that ensures all students can succeed in college-level courses upon graduation.

DELAWARE'S COLLEGE SUCCESS REPORT

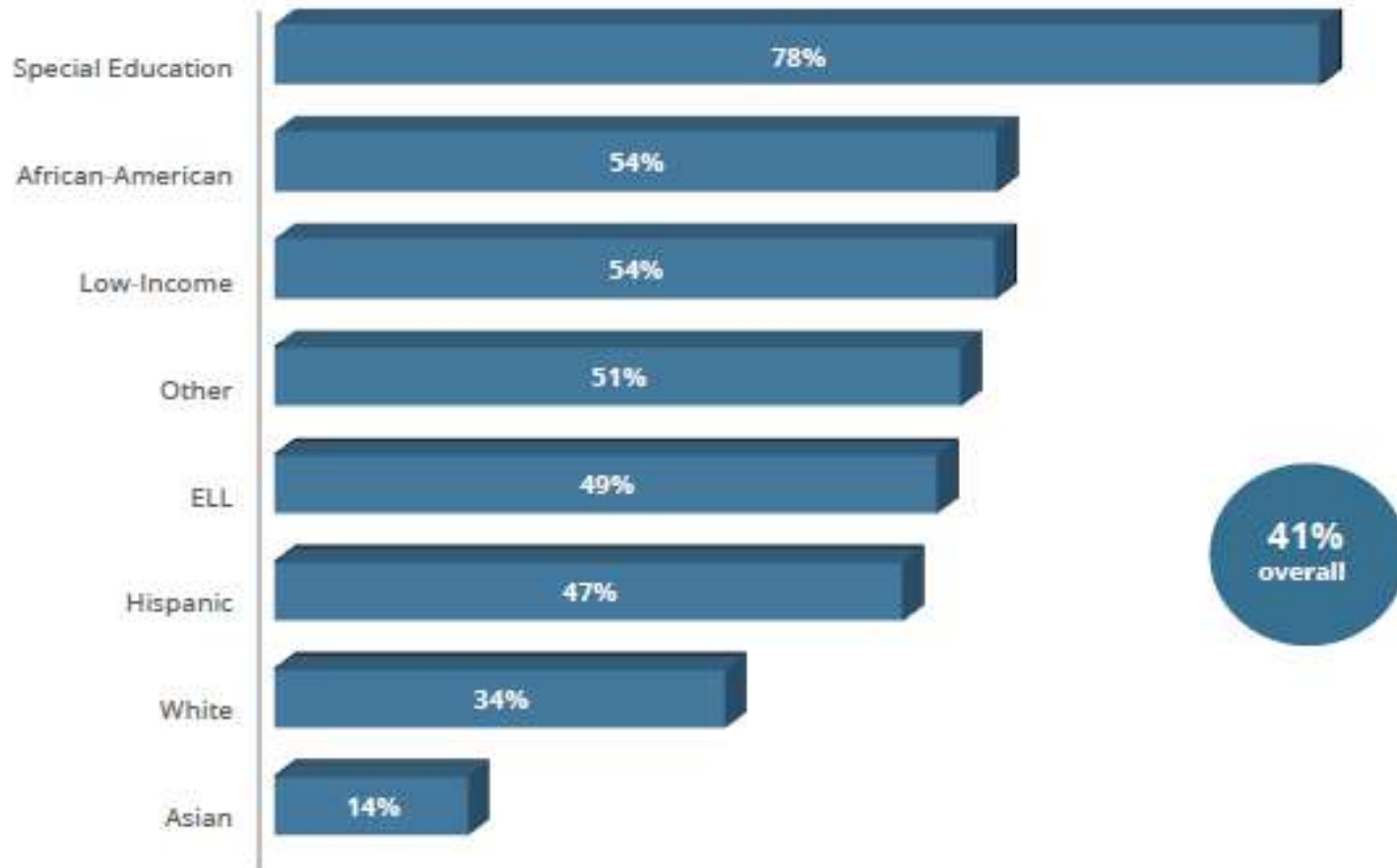


Remediation Rates by County: Class of 2012-2015



Remediation by Subgroup: Class of 2015

Percentage of students requiring remediation by subgroup (Class of 2015)



Key Focus Areas for 2017

- Rigorous Coursework and Quality of Instruction
 - Diving deeper to understand difference in delivery of standards and student expectations across course levels-College Prep, Honors, AP, Dual Enrollment.
- Equitable Access
 - Do student/parent perceptions of readiness align with the definition of readiness for schools and colleges?
- Systems of Intervention
 - Are current systems of intervention-Response to Intervention, Credit Recovery, etc. effective?
 - What systems are in place to identify students ready for advanced courses?

Understanding the State's Context

Math:

- The typical mathematical course trajectory for students is:
Algebra-Geometry-Algebra 2
- All students are required to take a 4th math credit in their senior year.
- Courses may be offered at different levels such as college prep, honors, advanced placement and dual enrollment.

English (ELA):

- Students are required to take 4 credits of English. Typically students take one credit a year throughout high school.
- Courses may be offered at different levels such as college prep, honors, advanced placement and dual enrollment.

Understanding the Path to Success

- **Student A:**

- Maintains a B average in Honors and Advanced Placement courses in English and receives a 480 on the ELA portion of the SAT. Upon enrolling in college, student A places into credit-bearing English courses.

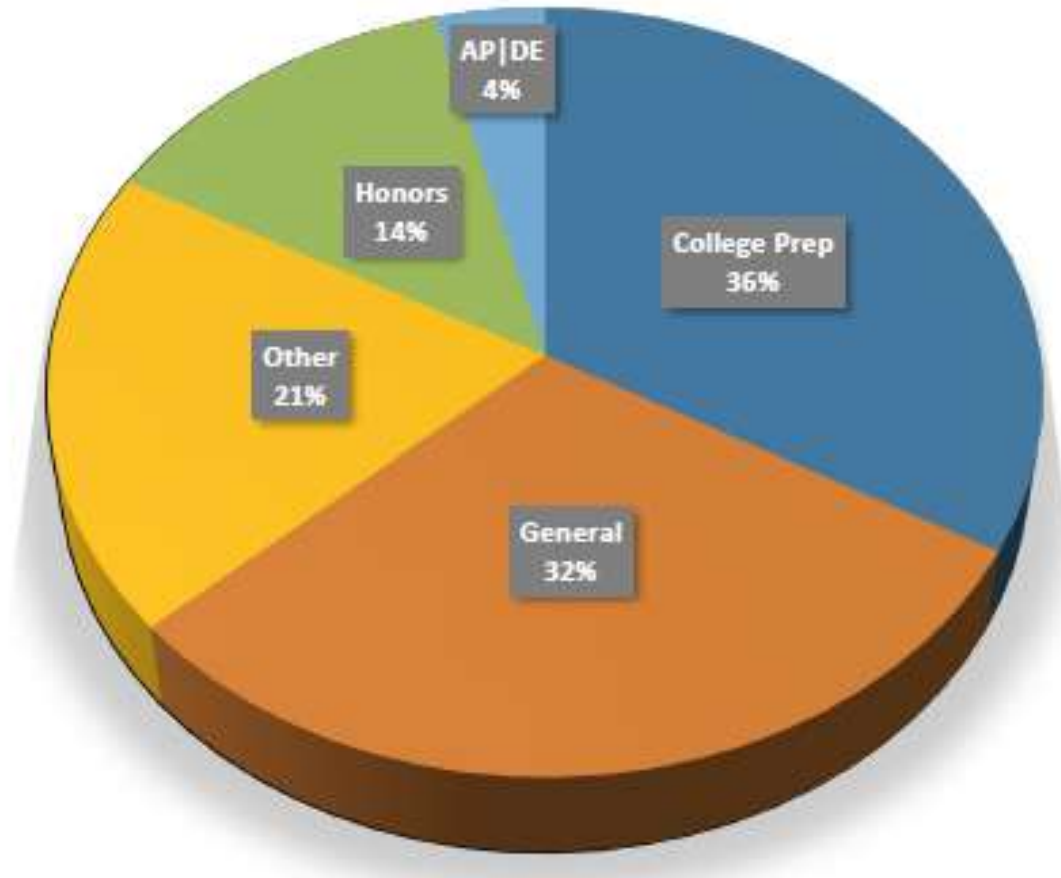
- **Student B:**

- Maintains a B average in English College Prep courses and receives a 400 on the ELA portion of the SAT. Upon enrolling in college, student B places into remedial English courses.

What's the difference between these two students?

Remediation Rates Connected to 12th Grade Courses

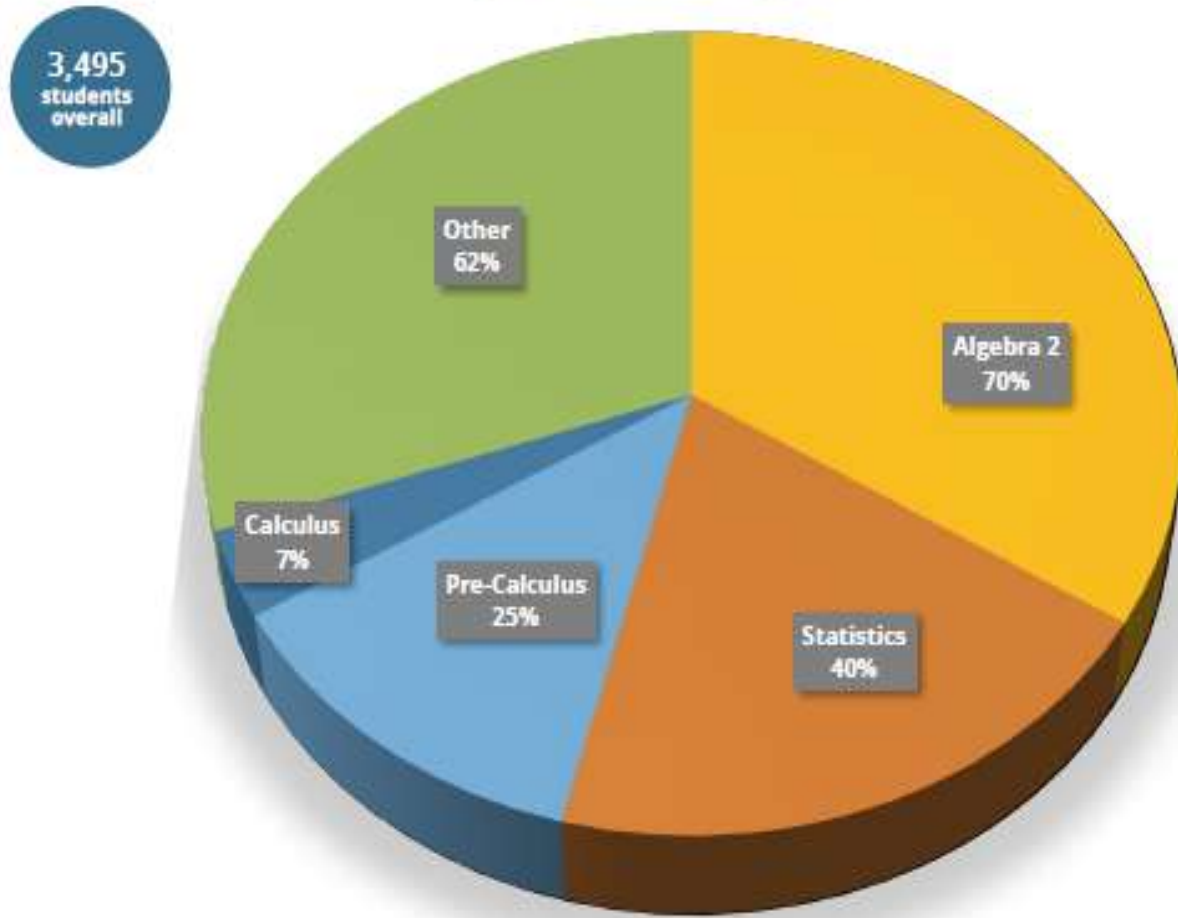
*Percentage of students requiring remediation
by English course (Class of 2015)*



What's the difference between courses with high remediation rates vs. low remediation rates?

Remediation Rates Connected to 12th Grade Courses

Percentage of students requiring remediation by math course (Class of 2015)



What's the difference between courses with high remediation rates vs. low remediation rates?

For more information:

Delaware Higher Education Office

www.delawaregoestocollege.org

(302) 735-4120
