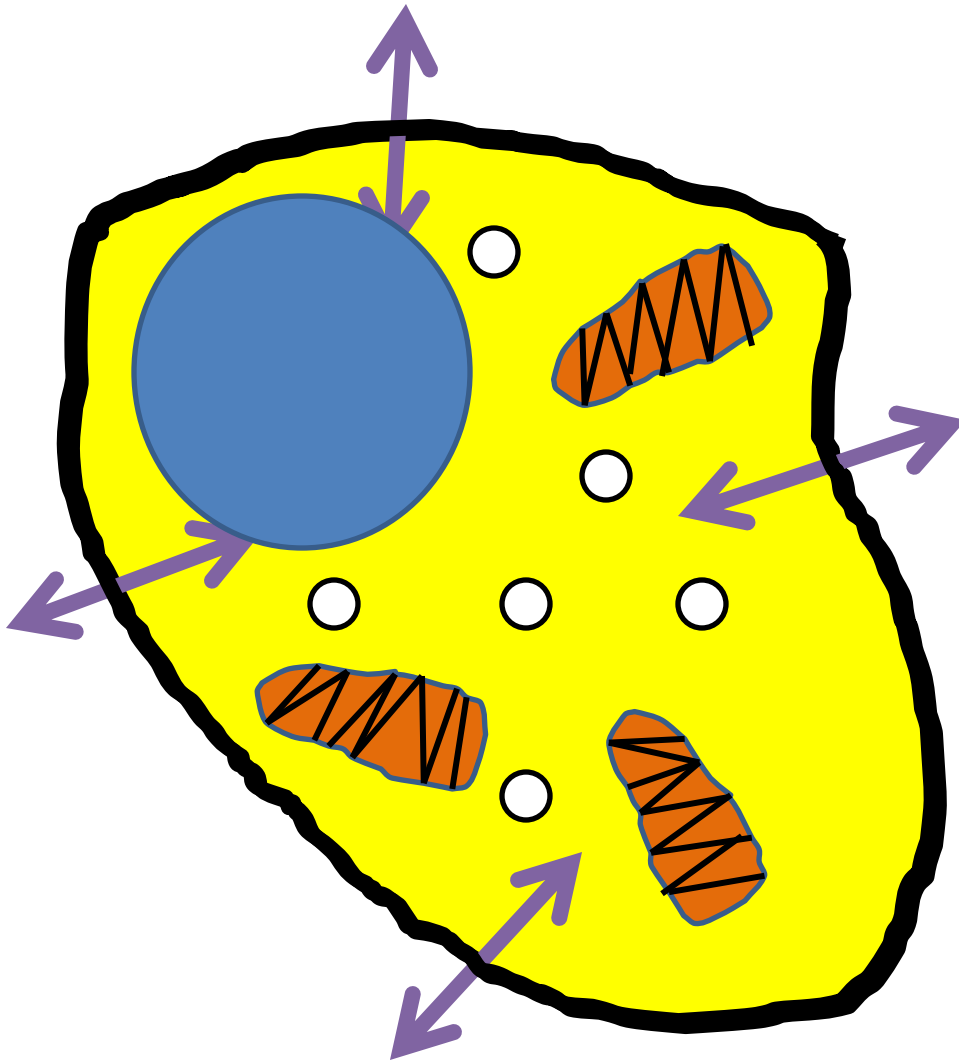


# Life Science



# Animal Cell

## Five parts of an animal cell that you need to know

### 1. **cell membrane**

Holds the cell's shape and allows some substances to pass through

### 2. **cytoplasm**

A jellylike material in which the organelles are located

### 3. **nucleus**

Controls the functions of the cell

### 4. **mitochondria**

Converts energy for the cell

### 5. **vacuoles**

Stores nutrients, water, or waste

## Five parts of an animal cell that you need to know

### cell membrane

Holds the cell's shape and allows some substances to pass through

### cytoplasm

A jellylike material in which the organelles are located

### nucleus

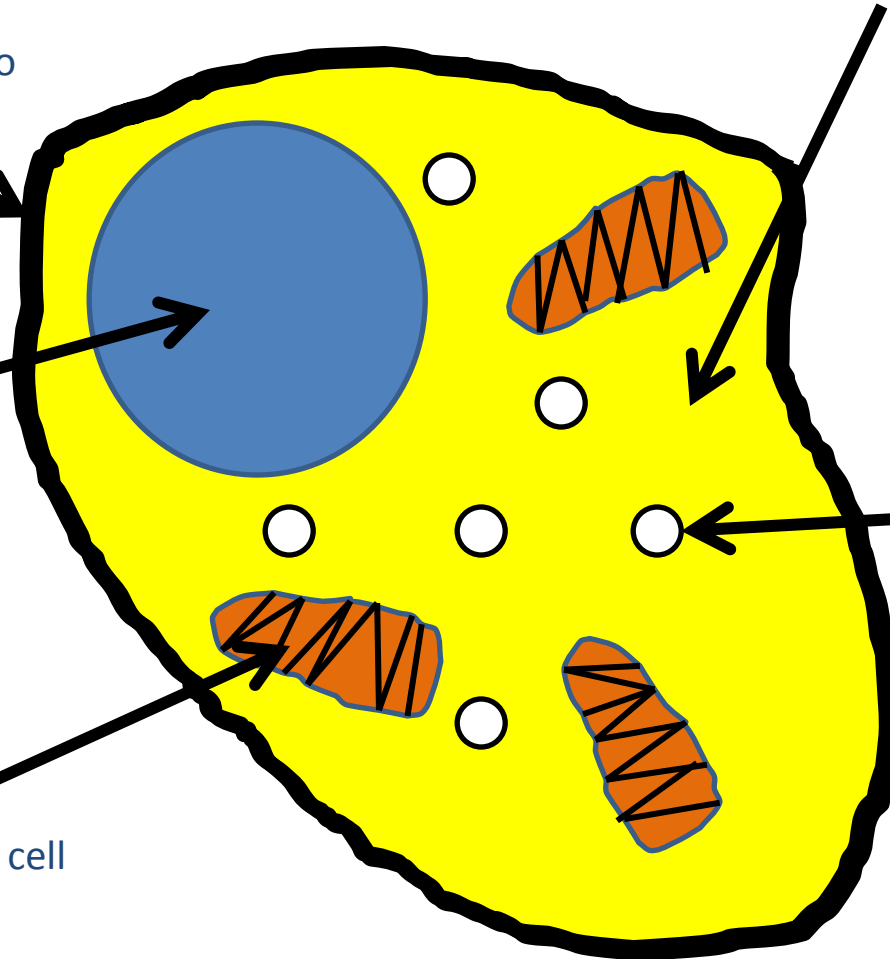
Controls the functions of the cell

### 4. mitochondria

Converts energy for the cell

### vacuoles

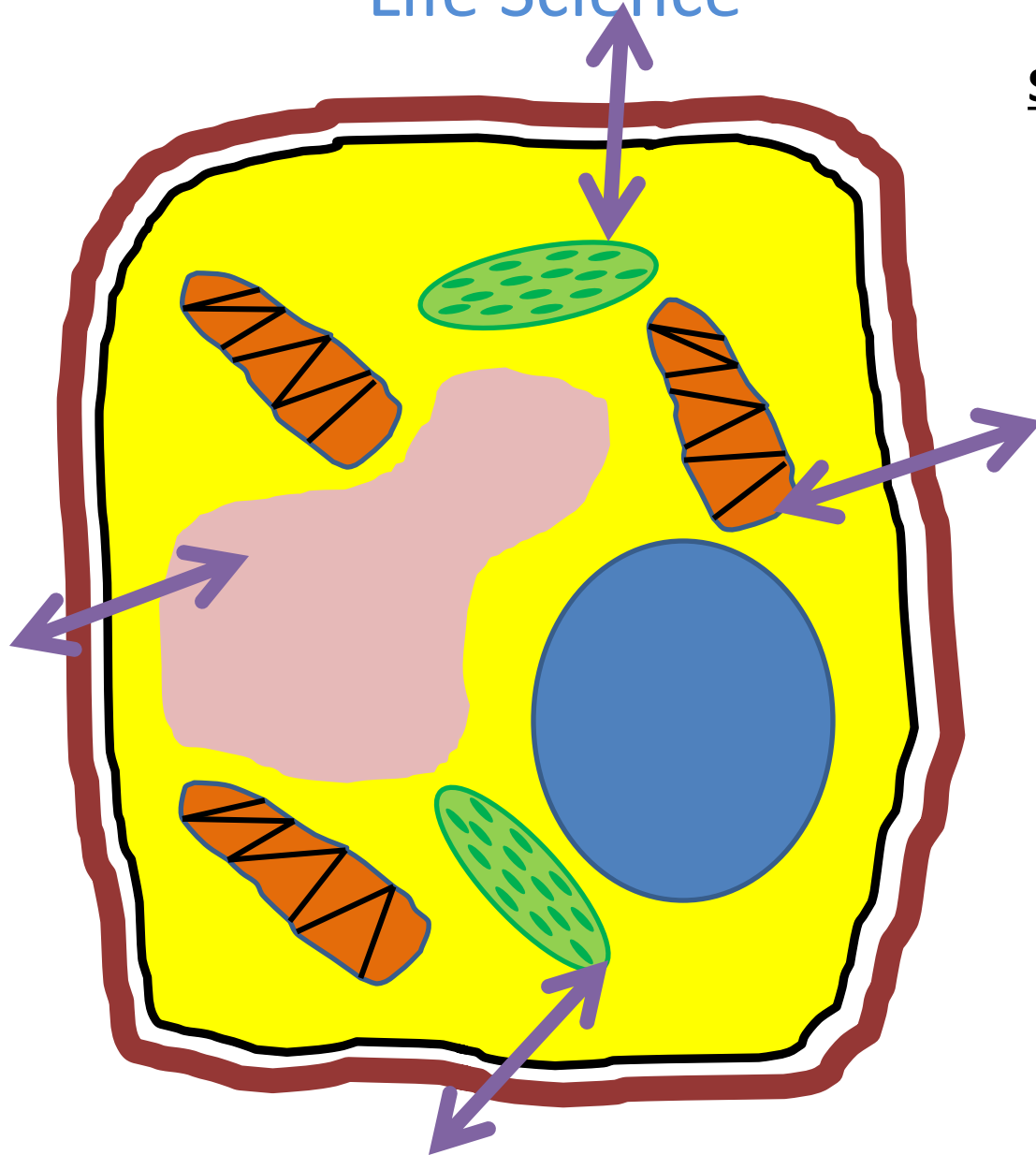
Stores nutrients, water, or waste



# Life Science

# Plant Cell

## Seven parts of a plant cell that you need to know



### 1. **cell membrane**

Holds the cell's shape and allows some substances to pass through

### 2. **cytoplasm**

A jellylike material in which the organelles are located

### 3. **nucleus**

Controls the functions of the cell

### 4. **mitochondria**

Converts energy for the cell

### 5. **vacuole**

Stores nutrients, water, or waste

### 6. **chloroplasts**

Converts energy from sunlight into chemical energy

### 7. **cell wall**

Gives the cell most of its support and structure

# Life Science

# Plant Cell

## Seven parts of a plant cell that you need to know

