

HILO HIGH SCHOOL REGISTRATION GUIDE 2024-2025



Our Hilo High School community prepares our students to:
Value self and others, and become
Independent thinkers and
Knowledge seekers in our changing
Society.

Continuous Notice of Non-Discrimination

The Hawaii State Department of Education (HIDOE) and its schools do not discriminate on the basis of race, color, national origin, ancestry, sex, gender identity, gender expression, sexual orientation, age, disability, and religion in its programs and activities. Please direct inquiries regarding HIDOE non-discrimination policies as follows:

Civil Rights Compliance Branch
Hawaii State Department of Education
P.O. Box 2360
Honolulu, Hawaii 96804
(808) 586-3322 or relay
CRCB@k12.hi.us

Beth Schimmelfennig, Director
Rhonda Wong, Compliance
Aaron Oandasan, Title VI
Toby Yamashiro, Title VII
Nicole Isa-Iijima, Title IX
Krysti Sukita, ADA/504

Students who experience mobility impairments may contact **Heidi Pana**, Vice Principal, at (808)313-5551 or **the school main office** at (808)313-5502 to determine accommodations that may be available to support their physical access on campus and to/from classes. Hilo High School affords minimum wheelchair accessibility to parents and members of the public. The following are available to wheelchair users: 1) Administration Building, 2) Hilo High Gymnasium, 4) Library, 5) Auditorium-first floor, 5) Building BB, and 6) restrooms on the lower floor of C-building. See Campus Accessibility Map for more information.

556 Waiuanue Avenue, Hilo, HI 96720
Phone: (808) 313-5502 FAX: (808) 974-4036

State of Hawaii • Department of Education • Hawaii District

Notice of Language Assistance

If you have difficulty understanding English, you have the right to receive language assistance at no cost to you. Please contact your school's principal for more information.

(Traditional Chinese/ 繁體中文) 如果您理解英語有困難，您有權得到免費的語言幫助。
請聯繫您的學校校長以獲得更多信息。

(Simplified Chinese/ 简体中文) 如果您理解英语有困难，您有权得到免费的语言帮助。请联系您的学校校长以获得更多信息。

(Japanese / 日本語) 英語の理解に困難を覚える方は、無料で言語支援を受ける権利があります。
詳細につきましては学校長にお問合わせください。

(Hawaiian / 'Ōlelo Hawai'i) Ina pilikia oe i ka hoomaopopo i ka olelo Pelekania, he kuleana no kou e lawelaweia oe i ke kokua olelo me ka uku ole. E hui kuka me ke poo kumu o kou kula no kekahi ike hou aku.

(Korean / 한국어) 영어를 이해하는데 어려움이 있는 경우, 무료로 통역 지원을 받을 권리가 있습니다.
더 자세한 정보는 학교장에게 연락하십시오.

(Chuukese / Kapasen Chuuk) Ika epwe weires ngonuk omw weweiti fóós un Merika, mi wor omw pwúúng omw kopwe angei aninnisin aweween fóós esapw kame. Kose mochen kékkéeri ewe meinapen ewe sukkun (Principal) ren tichikin pworausan.

(Ilokano / Ilokano) Nu narigat mo a maawatan ti Ingles, karbengam nga umawat ti tulong ti lenggwahe ket awan bayad na dayta a serbisyo. Para ti kanayonan nga impormasyon, mabalin a kontakem ti prinsipal ti eskwelaan yo maipanggep iti dayta a serbisyo.

(Samoan / Gagana Samoa) Afai e faigatā ona ē malamalama i le Igilisi, e i ai lau aiā e maua ai le fesoasoani tau gagana e aunoa ma se tupe e te totogi ina. Fa'amolemole fa'afeso'ota'i le pule o lau aoga mo nisi fa'amatalaga.

(Tongan / Lea faka-Tonga) Kapau 'oku faingata'a ke mahino kiate koe 'a e lea faka-Papalangi, 'oku 'i ai ho'o totonu ke ke ma'u ha tokoni fakatonulea 'ikai totongi. Kataki 'o fetu'utaki ki he puleako ki ha toe fakaikiiki ange.

(Tagalog / Tagalog) Kung nahihirapan kang intindihin ang Ingles, karapatan mong makatanggap ng tulong para sa lenggwahe at libre ang serbisyonang ito. Para sa karagdagang impormasyon, maari mong kontakin ang prinsipal ng iyong paaralan tungkol sa serbisyonang ito.

(Cebuano / Sugboanon) Kon kamo adunay kalisud sa pagsabut sa Iningles, naa moy katungod sa pagdawat sa tabang sa pinulongan nga walay gasto kaninyo. Palihog kontaka ang prinsipal sa inyong eskwelahan alang sa dugang nga impormasyon.

(Vietnamese / Tiếng Việt) Nếu quý vị thấy khó khăn trong việc hiểu tiếng Anh, quý vị có quyền nhận được sự hỗ trợ ngôn ngữ miễn phí. Vui lòng liên hệ hiệu trưởng của trường quý vị để biết thêm thông tin.

(Spanish / Español) Si tiene dificultad para entender Inglés, tiene derecho a recibir asistencia lingüística sin costo alguno para usted. Comuníquese con el director de su escuela para obtener más información.

(Marshallese / Kajin Majôl) Elaññe ejabwe am melele kajin Pälle, ewōr am jimwe ñan jibañ ko ikijien ukok ilo ejelok wōnen. Jouj im kōjjelāik lok principle eo an jikuul eo am ñan melele ko rellep lok.

PRINCIPAL'S MESSAGE

College or work...What will I be doing after graduation? As you prepare to complete high school, this will be the biggest and most important question you will be asking yourself. The key to answering this question is planning and making wise choices as you register for classes. Talk to your parents. Talk with your counselors. Ask the teachers themselves what you could expect from taking their courses. The bottom line is to choose thoughtfully and carefully. You are planning for your future.

Please make time to **READ this catalog thoroughly** and **FOLLOW DIRECTIONS!** This statement seems almost too simple but it is the secret to a successful registration for next year here at Hilo High. And with a good school year, every Viking will add another solid building block for a great and fulfilling future.

TABLE OF CONTENTS

NOTICE OF LANGUAGE ASSISTANCE	1
GENERAL INFORMATION	3
PERSONAL TRANSITION PLAN	3
STUDENT ACTIVITIES/COMMUNITY ENGAGEMENT	4
GRADUATION REQUIREMENTS	5
SCHEDULE CHANGE POLICY	6
DUAL CREDIT OPPORTUNITIES	7
ACADEMIES	8-18
CAREER & TECHNICAL EDUCATION	
AGRICULTURE	20
ARCHITECTURAL DESIGN	21
ENGINEERING	22
BUSINESS MARKETING MGT	23
FILM & MEDIA PRODUCTION	24
DIGITAL DESIGN	25
EDUCATION	26
HEALTH SERVICES	27
HOSPITALITY - CULINARY	28
INFO TECH – PROGRAMMING	29
FIRE & EMERGENCY SERVICES	30
LAW & PUBLIC SAFETY	31
MANUFACTURING - WELDING	32
MANUFACTURING - ROBOTICS	33
RES & COMM CONSTRUCTION	34
FINE ARTS	
HAWAIIAN DANCE	35
DRAMA & THEATER	36
MUSIC	37-38
VISUAL ARTS	39-40
ENGLISH LANGUAGE ARTS	41
ENGLISH LEARNER PROGRAM (EL)	42
HEALTH & PE	43
ARMY JROTC	44
MATHEMATICS	45-46
SCIENCE	47-50
SOCIAL STUDIES	51-52
WORLD LANGUAGES	53-54
AVID	55
LEADERSHIP/SCHOOL SERVICE/TRANSITION TO HS	55
SPECIAL EDUCATION	56
PALC	57
NCAA / NAIA COLLEGE SPORTS INFORMATION	58
REGISTRATION WORKSHEET	Back Cover

SCHEDULING OF COURSES

This course catalog will help plan your program of study at Hilo High School. The time spent planning will help you avoid many problems once school begins. Use this catalog to gain an understanding of each course, its content, and the prerequisites. Study it well before making a decision.

KNOW YOUR REQUIREMENTS

- ✓ Know what your graduation requirements are before you plan.
- ✓ If you have questions about credits for graduation, college, or career entrance, see your counselor.

PLAN AHEAD

- ✓ **READ** the course descriptions **BEFORE** selecting a subject to be sure it fits your needs and/or interests.
- ✓ **CONSULT** with teachers in specific subject areas for more detailed information.
- ✓ **BALANCE** your course selections. Allow yourself the freedom to take elective subjects each year - they are a valuable part of your total education.
- ✓ **REMEMBER** to make sure you have met the prerequisites for a particular course.
- ✓ **ALTERNATE COURSES** must be selected in case it is not possible to get into your other choices.
- ✓ **BE SURE** to take courses which will give you the best possible preparation for your future plans. Take advantage of the courses available to you.

COMPLETE YOUR SELECTION

- ✓ Use the "practice" form on the back cover of this catalog.
- ✓ Place all required courses first then electives.
- ✓ Get teacher approvals. Signatures must be obtained before and after school and during recesses.
- ✓ Have your parent or guardian sign your form.
- ✓ Turn in your completed form to your STARS teacher by the due date.

Students who fail to return their registration forms will be scheduled by their counselors or the registrar with no option for change if they end up with courses that "were not asked for" or "they didn't want or need."

Students not returning to HHS in the 2024-2025 school year should contact the registrar's office to sign release papers.

GENERAL INFORMATION

Student Residence

Students must reside within the Hilo High School district either with their parents or legal guardians.

Geographic Exception

Students with a physical residence outside of HHS boundaries are reminded that geographic exceptions must be submitted if they would like to attend HHS next school year. Forms are available at any school.

Geographic exceptions will be accepted between Jan. 1 – Mar. 1.

Depending on space availability, approval for GE is based on 1) child of a staff member, 2) sibling at the school, and/or 3) program of study. An approved geographic exception is good until the student withdraws from the school or graduates.

Admission

Students transferring from other Hawaii schools, private & public, must bring:

- ◇ proof of residence
- ◇ a school release, including credits earned and grades received
- ◇ current courses & grades
- ◇ his/her health record
- ◇ approved GE, if applicable
- ◇ legal guardianship documentation, if applicable
- ◇ power of attorney good for one year, if applicable

Additional requirements are necessary for students who are entering a Hawaii school for the first time. Call the registrar's office for more information.

Health Requirements

The Hawaii School Attendance Law regulated by the Department of Health requires that all children entering school in Hawaii for the first time meet certain health requirements. **All students must have a negative tuberculin test with a number reading performed in the US within 12 months before being admitted to school.** In addition to the TB test, the following health requirements must be met:

A completed health record (DOE Form 14) to prove that a physical examination was completed in the US by a licensed physician within 12 months of entering school and all other required immunizations have been completed, **OR** an appointment card from the family doctor to prove that the child is in the process of completing the physical exam. In this case, the law allows a child 90 days to complete all health requirements. If the requirements are not met, a child will be excluded from school.

If a student is not able to participate in a physical education class for a valid reason, a written medical excuse from the doctor is required. The note should state the reason & duration for the restriction. This should be submitted to and approved by the principal each school year, and a copy should be given to the school nurse at the beginning of school or at the onset of the condition.

Minimum School Day

Students must register for a full 7-period schedule during their 4 years at Hilo High. When authorized by parents/guardians and administration, modified schedules may be granted (with required documents) for the following reasons: participation in work study program, employment, Running Start, or early admission college program.

Grade Level Promotion/ Retention/ Acceleration

Grade 10: 5 Cr Grade 11: 11 Cr Grade 12: 17 Cr

Students must earn an accumulation of credits to be promoted to the next grade level. Students who do not meet the promotion credit requirement will remain in the retained grade level for the entire school year, except for students who can be upgraded to senior status at the end of the first semester of the senior year. All other accelerations will be done at the beginning of each school year.

Summer Program/ Online/ Recovery Credits

Before taking any courses from programs outside of Hilo High School, students should see their counselor to check if Hilo High will accept the credits. Credits are not accepted from all programs. Principal's approval may be required prior to participating in the program. See counselors for most current information.

Graduation/ Commencement Exercises

Students graduate in May of the students' fourth year in high school when all requirements are met. Early graduation is allowed on a case-by-case basis with advance administrative approval. Students considering this option should work with their counselors to plan appropriately. Commencement exercises may be scheduled after the last day of school for seniors. The last day of school for seniors shall be set by the Hawaii State Department of Education. Students shall be permitted to participate in commencement if they:

1. Meet the requirements for a diploma or a certificate;
2. Have fulfilled their financial obligations; and
3. Meet other conditions, established by the Department of Education, which meet the standards of clarity, reasonableness, and justifiability.

Personal Transition Plan (PTP)

All students must complete a Personal Transition Plan (PTP) as a requirement toward earning a high school diploma. It is credited as 0.5 credit on the official transcript. **The PTP must be completed by the end of the students' junior year.** The Personal Transition Plan is defined as an individually designed and custom tailored plan of action for each high school student to move successfully from high school to post-secondary and/or career venues. The plan will have the elements of goal attainment, identification of available resources, evidence to support the plan of action taken, and a self-evaluation component. The design of the PTP shall take into account that the student, parent, and school personnel have a shared responsibility in the development and execution of the PTP during high school. Students receive instructions on developing and maintaining their PTP in Transitions to High School course (grade 9), in Career Pathway Core courses, and in weekly STARS Advisory classes. **Students who decide not to take the Transition to High School and/or Career Pathway Core courses are still responsible for submitting a Personal Transition Plan portfolio in their junior year.**

Hilo High Student Activities

The Hilo High School Student Association has made a commitment to the following:

Inclusiveness: All students should be involved in all facets of our school.

Student-led and Student-run: Students, with the guidance of their advisors, will decide which activities they will implement. They will all work together as a team to insure success.

Design-thinking: Students will learn the skills to insure that they understand what needs to be done, how it should be done and who should do it all. They will evaluate their concerns and select projects which address issues which they would like improved or changed.

Recognition: Students will develop a program which will recognize our students both in and out of the classroom.

Leadership development: Students have developed a system of Class and SA leadership which includes a wider group of students to increase leadership opportunities. In order to do some or all of this, Hilo High Student Association has executive officers and a leadership team of 11 students who represent a cross section of the student body. Each class has executive officers and a representative from each of their grade level STARS advisory classes.

The following clubs and activities are available for participation by students:

Art Club	Na Liko Lehua O Hilo Hanakahi	Japan Wizard
AVID	Pride Empowerment Club	JROTC
Filipino Club	Robotics	KVIKS
Future Health Professionals	Table Top Gaming Club	National Honor Society
Hawaiian Club	Taiko Club	Science Fair
Japan Club	HHS Band	Speech & Debate
Key Club	Class Councils	Student Association
Leo Club	HERO Program	
Math Club	HHS Student Credit Union	
Future Farmers of America	Environmental Agents of Change	23 Boys & Girls Sports Teams

Community Development and Civic Engagement

Hilo High School encourages all students to participate in a variety of activities within our community from volunteering to help social agencies to working to bring about change in how we do things in our community. Each student is challenged to participate in a service project with their class, club, athletic team or volunteer with an organization whose cause they are passionate about. It is also important for students to have an opportunity to do a career shadowing, internship or volunteer position where they can learn about a future career.

Hilo High Students can participate in the following programs outside of the regular school day:

Community Service: Volunteer to work with a non-profit or government agency to learn about the world of work and to help you make a career choice. For every 60 hours you volunteer you are able to earn 0.5 elective credits toward graduation. Maximum of 1 credit (120 hours) may be earned.

Career Internships: This collaboration between Hilo High School and many businesses in Hilo allows students to complete an internship in an area of career interest. Every 60 hours of work earns you 0.5 elective credits toward graduation.

Interested students should see their counselor for more information.

State of Hawaii Department of Education Graduation Requirements

A Hawaii High School Diploma shall be issued to students who meet these minimum course and credit requirements.

Course Requirements	Hawaii High School Diploma
English	4.0 credits including: English Language Arts1 (1.0 credit); and English Language Arts 2 (1.0 credit); and Expository Writing* (0.5 credit) <i>Requirement for Expos Writing can be met with Eng 3 or 4, AP Eng, or Early College Eng 100</i>
Social Studies	4.0 credits including: World History & Culture (1 credit); US History (1 credit); Modern History of Hawaii (0.5 credit); and Participation in a Democracy (0.5 credit)
Mathematics	3.0 credits including: Algebra 1 (1.0 credit); and Geometry (1.0 credit) & one other math (e.g., two-year integrated Common Core course sequence)
Science	3.0 credits including: Biology 1 (1.0 credit); and Science Electives (2.0 credits)
World Language, Fine Arts, JROTC, or Career & Technical Education (CTE)	2.0 credits in one of the *Specified Programs of Study
Physical Education	1.0 credit (2-semester courses)
Health	0.5 credit (1-semester course)
Personal Transition Plan	0.5 credit (submit portfolio)
Electives	6.0 credits
TOTAL	24.0 credits

Students may receive one the following diplomas in place of the standard Hawaii High School Diploma with an eligible cumulative GPA:

Cum Laude Diploma: 3.0 to 3.5 • Magna Cum Laude Diploma: 3.51 to 3.8 • Summa Cum Laude Diploma: 3.8 + and above

Honors Recognition Certificate Requirements

In addition to meeting the requirements for the Hawaii High School Diploma,

Students may also receive the following Honors Recognition Certificates if requirements are met with a cumulative GPA of 3.0 or above:

Academic Honors:

- 4 credits of Math: The 4th credit beyond Algebra 2 must be earned via a combination of the following half-credit courses: Algebra 3, Trigonometry, Analytic Geometry.
- 4 credits of Science: Of the four credits, one credit must be in Biology 1 (or AP Biology course); and the other three credits must be lab-based science credits.
- Two credits minimum must be from AP/Running Start/Early College courses (equivalent to credits for 2 college courses).

CTE Honors:

- Complete a 2 course sequence in an approved CTE Program of Study.
- Earn a B or better in each course of the 2 course sequence; and
 - Meet or exceed proficiency on a Performance-Based Assessment for the corresponding program of study.

STEM Honors:

- 4 credits of Math: The 4th credit beyond Algebra 2 must be earned via a combination of the following half-credit courses (or equivalent IB math courses): Algebra 3, Trigonometry, Analytic Geometry.
- 4 credits of Science: Of the four credits, one credit must be in Biology 1 (or AP Biology course); and the other three credits must be lab-based science credits.
- A STEM Capstone/STEM Senior Project.

VALEDICTORIAN DESIGNATION

The valedictorian criteria have been approved by the Hawaii High School Principal Forum.
Effective for the Class of 2016 and beyond, graduating seniors will be declared valedictorian if the following are met:

- 1) GPA of 4.0 and 2) earned and met the requirements of one of the Honor Recognition Certificates.

Valedictorians will be named after the third quarter.

The master schedule for teaching positions is determined by students' choices at registration.

Students should make course selections assuming that these choices will be final.

SCHEDULING POLICY and PROCEDURES

- 1) Each student must enroll in English and a Social Studies course each year.
- 2) Each student will register for a full 7-period schedule. Exceptions will require the written approval of the principal.
- 3) Only Juniors and Seniors MAY double-up in required subjects for the purpose of credit recovery.
- 4) Courses may not be repeated for credit except for those courses identified in the ACCN as repeatable. However, courses may be repeated for no credit to improve one's grade.

Schedule Change Policy

One of Hilo High's learner outcomes is that students will

"Act as responsible citizens in the community, state, nation & global society."

With this in mind, students should make careful, thoughtful decisions during registration.

In order to maximize classroom learning and minimize disruption, students and parents should be aware that:

- Schedule changes may be made for the following reasons: incomplete schedule, credit previously received for the course, incorrect level placement, course required for graduation, scheduling error (same course on the schedule), IEP/MP team decision, or extenuating circumstances.
- Schedule changes are allowed during the first 2 weeks after the start of the first semester for approved reasons. Request for changes to second semester schedules may be submitted during the two weeks before and two weeks after the start of the second semester.
- Once the schedule change period has passed, changes can be made only by administrative approval. The following will apply:
 - If a class change is approved after 50% of the class is completed, the student can only be placed in school service.
 - When a change is made within the same content area, the "drop teacher" will send the exit grade to the "add teacher."
- No schedule changes will be processed in the fourth quarter.

Dual Credit Opportunities at Hilo High School

Advanced Placement - AP

AP is a program in the United States and Canada, created by the College Board, which offers college-level curricula and examinations to high school students. American colleges and universities often grant placement and course credit to students who obtain high scores on the examinations. Each student's grade in the course is determined separately from their AP examination score. AP courses are taught by Hilo High School Faculty based on approved course curricula and syllabi. It is important to note that each college and university — not the College Board or the AP Program — makes its own decisions about awarding credit and placement. Most have a written policy spelling out things like the minimum required score to earn credit for a given AP Exam, the amount of credit awarded and how credits are applied.

Early College High School – ECHS

ECHS is a dual credit program intended to enable students to earn both high school and college credits. Federal funding initiatives dictate that ECHS serves a specific population of high school students who meet a combination of the following criteria: first-generation college students, economically disadvantaged, underrepresented minority groups in higher education, and students who would otherwise be challenged in a college-level course without additional supports specifically geared toward high school students. ECHS courses are taken on our Hilo High School campus, and are offered as part of the regular school day. There is no cost to students/families for ECHS courses.

Requirements/Steps to apply:

1. On Hilo High School Registration Form, please check the box indicating your interest in Early College classes. All interested students will be called in for a meeting.
2. Complete Hilo High School ECHS Application (Google Form will be sent by Mrs. Frias)
3. Complete University of Hawaii System Application (Hawaii Community College - online)
4. Complete Dual Credit Application (submit online, then print hard copy and obtain signatures)
5. Placement Test Results (for some courses). Students may use ACT or SAT scores in lieu of the Placement test to demonstrate eligibility.
6. Attend a mandatory Student Orientation (to be announced)

Tentative courses planned for 2024-2025 School Year:

- HWST 100 (Soc. St.)/HWST 102(Elective)** – no placement test required
- HWST 105 (Soc. St.)/HAW 101(Elective)** – no placement test required
- ENG 100 (English)/ PSY 100 (Soc. St.)** – placement test required
- MATH 100 (Math)/SPCO 151 (Elective)** – placement test required

Running Start

Running Start is a statewide dual credit program that provides an opportunity for academically qualified high school students to enroll in college classes through the University of Hawai'i system in addition to their high school coursework. *Running Start* courses are taken on the University of Hawai'i campus (HawCC or UH Hilo), and student/family is responsible for their own tuition and transportation. *Running Start* courses are suitable for students who are academically and personally ready to manage the demands of college-level course(s) on a college campus with other college students and no additional support from the high school. Limited scholarships are available.

Requirements to apply:

1. Complete University of Hawaii System Application (online)
2. Complete Running Start Application (online, then print hard copy and obtain signatures)
3. Placement Test Results (for most courses). Students may use ACT or SAT scores in lieu of the Placement test to demonstrate eligibility.

See Mrs. Kellie Frias in N103 for more information or call (808)313-5534 or email: kellie.frias@k12.hi.us

Which Dual Credit Program is right for me?

The comparison chart below might help you to make that decision. And remember, if you have any questions, please see your counselor!

	Advanced Placement	Early College High School	Running Start
Dual Credit	Maybe	Yes	Yes
On Hilo High Campus	Yes	Yes	No
Placement Testing Requirement	No	Yes, for some classes	Yes, for most classes
Variety of courses	Limited	Limited	Wide
Cost to students/families	Yes	No	Yes (limited scholarships available)
Weighted Grade	Yes	Yes, for some classes	Yes, for some classes

Hilo High School

ACADEMIES

In the 23-24 SY, we introduced the following academies along with our Freshman Academy:

<p>Academy of Health & Human Services</p> <p><i>Health Services</i></p> <p><i>Education</i></p> <p><i>Law & Public Safety</i></p>	<p>Academy of Construction & Engineering</p> <p><i>Architectural Design & Engineering</i></p> <p><i>Advanced Manufacturing</i></p> <p><i>Building & Construction</i></p> <p><i>Information Tech & Digital Transformation</i></p>	<p>Academy of Business & Natural Resources</p> <p><i>Hospitality, Tourism, & Recreation</i></p> <p><i>Business Management, Finance, & Marketing</i></p> <p><i>Agriculture, Food, & Natural Resources</i></p> <p><i>Cultural Arts, Media, & Entertainment</i></p>
--	---	---

Each student in grades 10-12 is required to choose a program of study class.

This program will determine which academy you will join.

Each student is enrolled in 7 periods (7 credits) per year plus a STARS advisory class.

If you will be a senior in good standing who is on track for graduation
(completed PTP and will only need 3 credits or fewer to graduate)
& are interested in a modified schedule, see your counselor for more information.

You can choose to remain in your current program of study or if you have changed your interest, you can select two program of study classes that interest you (See Career & Technical Education section in pages 20-35).

We are asking for two classes in case you are unable to have your first choice.

If you do not select a program of study course, one will be selected for you and you will not be able to make changes.

Juniors & Seniors: You can choose additional program of study courses, if space is available, but please list them in the general electives section of your registration form.



Freshman Academy

VISION

At Hilo High School, every 9th grader will be engaged in challenging smaller learning communities and feel a sense of purpose by belonging to a culture of excellence.

MISSION

To provide 9th graders the opportunity to develop a purposeful sense of direction in life, to excel at the standards and refine their abilities to demonstrate the GLOs.

The Freshman Academy is a program set up to transition young adults into a high school environment and beyond. We believe that this program will prepare students to excel in their attendance and academics and allow them to complete each grade level and graduate within four years. The program will accomplish these goals by organizing students into teams (Hanakahi & One) that will provide students with a supportive environment - academically, socially, and emotionally - which will set them on a path of high school success.

The Kalo plant in our logo represents the ‘olelo noe‘au (Hawaiian proverb) that states “Early beginnings are rooted in a solid foundation.” As part of the Freshman Academy, students will thrive under the guidance and nurturing of the Freshman Academy teachers, counselor, support staff, parents/family, and administration while developing strong roots in our Viking community and traditions.



Academy of Business & Natural Resources

VISION

The Academy of Business and Natural Resources graduates are innovative, community-minded entrepreneurs equipped with industry skills. Living Aloha 'Āina* graduates are prepared to pursue a sustainable future for our local and global communities.

*Aloha 'Āina: environmental stewardship

MISSION

In collaboration with the local and global community, the Academy of Business and Natural Resources will provide every student with rigorous and authentic learning experiences through project-based pedagogy grounded in Hawai'i's values.

Academy of Business & Natural Resources

Subject	9th Grade	10th Grade	11th Grade	12th Grade
English Language Arts 4 credits required	English 9 Freshmen Academy	English 10	English 11	English 12
Social Studies 4 credits required	Modern Hist of Hawaii Participation in Demo Freshmen Academy	US History	World History & Culture	Economics/ American Problems Geography/ Pacific Island Cultures
Science 3 credits required 4 credits recommended	Environmental Science Freshmen Academy	Biology	Chemistry Physical Science Plants & Animals	Botany Marine Science
Math 3 credits required 4 credits recommended	Modeling our World Algebra 1 Freshmen Academy	Algebra 1 Geometry	Geometry Algebra 2	Algebra 2 Probabilities/Statistics Trigonometry/Alg 3
CTE Program of Study Course 3 credits required in the same sequence	Students will select a program of study for 10th grade year during registration and will be required to complete that program of study sequence.	Foundations of Creative Media	Digital Video Tech	Film & Media Production 1
		Foundations of Creative Media	Digital Design 1	Digital Design 2
		Foundations of Agriculture, Food, and Natural Resources	Agriculture & Food Production Business 1	Agriculture & Food Production Business 2
		Foundations of Business & Marketing	Advertising & Public Relations	Digital Marketing & Market Analytics, Marketing Operations, and/or Marketing Work-Based Learning
		Foundations of Culinary	Culinary Arts Food Prep	Advanced Culinary Arts: Pastry & Savory and/or Culinary Arts Work-Based Learning
PE / Health / PTP See each course for credit	Transition to HS (0.5 cr) / PE Lifetime Fitness (0.5 cr) Freshmen Academy	Heath Today & Tomorrow (0.5 cr) / PE Lifetime Fitness (0.5 cr)	Completion of PTP in Advisory (0.5 cr)	
Global Electives: See credits required per grade level *Students can choose to explore other program of study courses in the 11th and/or 12th grade in any academy if space is available.	Two (2 cr) in the following: Fine Arts PE World Language Other General Elective	One (1 cr) in the following: Fine Arts PE World Language Other General Elective	Two (2 cr) in the following: Fine Arts PE World Language Other General Elective	Two (2 cr) in the following: Fine Arts PE World Language Other General Elective
Credits	7 cr	7 cr	7 cr	7 cr



Core Global Electives

Courses listed below will also fulfill the core requirements and can be chosen in place of the courses in the table to the left.

Subject	9th Grade	10th Grade	11th Grade	12th Grade
English Language Arts	English 9 Honors	English 10 Honors	AP English Language & Composition	AP English Literature & Composition
Social Studies		US History Honors		AP US History
Science	Biology Honors	Chemistry X	AP Biology & Biology 2 (2 Cr) AP Environmental Science	Physical Science AP Biology & Biology 2 (2 cr) AP Environmental Science
Math	Geometry X	Algebra 2X	Trigonometry/ Analytic Geometry Trigonometry/ Alg-3	Trigonometry/ Analytic Geometry Probabilities/ Statistics AP Calculus
Early College <small>Available to all students</small>	English 100: Composition 1 SP151: Personal & Public Speaking Math 100: Survey of Mathematics HWST 100: Piko Hawaii: Connecting to Hawaii Island HWST 102: Maui Hawaii: Hawaiian Spirituality HWST105: Mea Kanu Hawaii: Hawaiian Plant Culture HAW 100: Elementary Hawaii Language 1 PSY 100: Survey of Psychology			



Academy of Health & Human Services

VISION

The Academy of Health and Human Services graduates are caring and knowledgeable individuals. They are ethical problem-solvers, dedicated to serving our community with pride and aloha.

MISSION

Through a combination of rigorous academic curricula and real-world, real-life experiences, the Academy of Health and Human Services will prepare students to work independently and collaboratively with our community partners in their respective pathways.

Academy of Health & Human Services

Subject	9th Grade	10th Grade	11th Grade	12th Grade
English Language Arts 4 credits required	English 9 Freshmen Academy	English 10	English 11	English 12
Social Studies 4 credits required	Modern Hist of Hawaii Participation in Demo Freshmen Academy	US History	World History & Culture	Psychology / Sociology
Science 3 credits required 4 credits recommended	Environmental Science Freshmen Academy	Biology	Chemistry Physical Science	Human Physiology
Math 3 credits required 4 credits recommended	Modeling our World Algebra 1 Freshmen Academy	Algebra 1 Geometry	Geometry Algebra 2	Algebra 2 Probabilities/Statistics Trigonometry/Alg 3
CTE Program of Study Course 3 credits required in the same sequence	<i>Students will select a program of study for 10th grade year during registration and will be required to complete that program of study sequence.</i>	Foundations of Education	Teaching as a Profession 1	Teaching as a Profession 2 Teaching as a Profession Work-Based Learning
		Foundations of Health Services	Advanced Health Services	Nursing Services 1 & 2 Nursing Services Work-Based Learning
		Foundations of Fire and Emergency Services	Fire & Emergency Services 1	Fire & Emergency Services 2 & 3 Fire & Emergency Services Work-Based Learning
		Foundations of Law and Public Safety	Law Enforcement Services 1	Law Enforcement Services 2 & 3 Law Enforcement Services Work-Based Learning
PE / Health / PTP See each course for credit	Transition to HS (0.5 cr) / PE Lifetime Fitness (0.5 cr) Freshmen Academy	Heath Today & Tomorrow (0.5 cr) / PE Lifetime Fitness (0.5 cr)	Completion of PTP in Advisory (0.5 cr)	
Global Electives: See credits required per grade level *Students can choose to explore other program of study courses in the 11th and/or 12th grade in any academy if space is available.	Two (2 cr) in the following: Fine Arts PE World Language Other General Elective	One (1 cr) in the following: Fine Arts PE World Language Other General Elective	Two (2 cr) in the following: Fine Arts PE World Language Other General Elective	Two (2 cr) in the following: Fine Arts PE World Language Other General Elective
Credits	7 cr	7 cr	7 cr	7 cr



Core Global Electives

Courses listed below will also fulfill the core requirements and can be chosen in place of the courses in the table to the left.

Subject	9th Grade	10th Grade	11th Grade	12th Grade
English Language Arts	English 9 Honors	English 10 Honors	AP English Language & Composition	AP English Literature & Composition
Social Studies		US History Honors		AP US History
Science	Biology Honors	Chemistry X	AP Biology & Biology 2 (2 Cr) AP Environmental Science	Physical Science AP Biology & Biology 2 (2 cr) AP Environmental Science
Math	Geometry X	Algebra 2X	Trigonometry/ Analytic Geometry Trigonometry/ Alg-3	Trigonometry/ Analytic Geometry Probabilities/ Statistics AP Calculus
Early College <small>Available to all students</small>	English 100: Composition 1 SP151: Personal & Public Speaking Math 100: Survey of Mathematics HWST 100: Piko Hawaii: Connecting to Hawaii Island HWST 102: Maui Hawaii: Hawaiian Spirituality HWST105: Mea Kanu Hawaii: Hawaiian Plant Culture HAW 100: Elementary Hawaii Language 1 PSY 100: Survey of Psychology			



Academy of Construction & Engineering

VISION

The Academy of Construction and Engineering graduates are critical thinkers, effective problem-solvers, and community collaborators. They are prepared to design and communicate creative solutions to build our future with integrity and aloha.

MISSION

The Academy of Construction and Engineering provides all students a safe and rigorous learning environment that develops creative and effective problem solvers.

In collaboration with community partners, the academy will design authentic and meaningful learning experiences promoting effective communication and critical thinking.

Academy of Construction & Engineering

Subject	9th Grade	10th Grade	11th Grade	12th Grade
English Language Arts 4 credits required	English 9 Freshmen Academy	English 10	English 11	English 12
Social Studies 4 credits required	Modern History of HI / Participation in Democracy Freshmen Academy	US History	World History & Culture	Economics/ American Problems
Science 3 credits required 4 credits recommended	Environmental Science Freshmen Academy	Biology	Chemistry Physical Science	Chemistry Physics
Math 3 credits required 4 credits recommended	Modeling our World Algebra 1 Freshmen Academy	Algebra 1 Geometry	Geometry Algebra 2	Algebra 2 Trig/Alg-3
CTE Program of Study Course 3 credits required in the same sequence	Students will select a program of study for 10th grade year during registration and will be required to complete that program of study sequence.	<i>Not offered 24-25 SY</i>	Architectural Design 1	Arch Design Work-Based Learning
		Foundations of Construction	Residential & Commercial Construction 1	Residential & Commercial Construction 2 and/or Residential & Commercial Construction Work-Based Learning
		Foundations of Computer Systems & Technology	Programming 1	<i>Not offered 24-25 SY</i>
		Foundations of Engineering	Engineering Technology 1	Engineering Technology 2 &/or Engineering Tech Work-Based Learning
		Foundations of Manufacturing - Robotics	Automation & Robo Tech 1	Auto & Robo Tech 2 Auto & Robo Tech Work-Based Learning
		Foundations of Manufacturing - Welding	Welding 1	Welding 2 and/or Welding Work-Based Learning
Hilo High School Requirements See each course for credit	Transition to HS (0.5 cr) and PE Lifetime Fitness (0.5 cr) Freshmen Academy	Heath Today & Tomorrow (0/5 cr) and PE Lifetime Fitness (0.5 cr)	Completion of PTP in Advisory (0.5 cr)	
Global Electives: See credits required per grade level *Students can choose to explore other program of study courses in the 11th and/or 12th grade in any academy if space is available.	Two (2 cr) in the following: Fine Arts PE World Language Other General Elective	One (1 cr) in the following: Fine Arts PE World Language Other General Elective	Two (2 cr) in the following: Fine Arts PE World Language Other General Elective	Two (2 cr) in the following: Fine Arts PE World Language Other General Elective
Credits	7 cr	7 cr	7 cr	7 cr



Core Global Electives

Courses listed below will also fulfill the core requirements and can be chosen in place of the courses in the table to the left.

Subject	9th Grade	10th Grade	11th Grade	12th Grade
English Language Arts	English 9 Honors	English 10 Honors	AP English Language & Composition	AP English Literature & Composition
Social Studies		US History Honors		AP US History
Science	Biology Honors	Chemistry X	AP Biology & Biology 2 (2 Cr) AP Environmental Science	Physical Science AP Biology & Biology 2 (2 cr) AP Environmental Science
Math	Geometry X	Algebra 2X	Trigonometry/ Analytic Geometry Trigonometry/ Alg-3	Trigonometry/ Analytic Geometry Probabilities/ Statistics AP Calculus
Early College Available to all students	English 100: Composition 1 SP151: Personal & Public Speaking Math 100: Survey of Mathematics HWST 100: Piko Hawaii: Connecting to Hawaii Island HWST 102: Maui Hawaii: Hawaiian Spirituality HWST105: Mea Kanu Hawaii: Hawaiian Plant Culture HAW 100: Elementary Hawaii Language 1 PSY 100: Survey of Psychology			

COURSE DESCRIPTIONS

**LISTED
BY DEPARTMENTS**

CAREER & TECHNICAL EDUCATION

AGRICULTURE, FOOD, AND NATURAL RESOURCES



AGRICULTURE & FOOD PRODUCTION BUSINESS

FOUNDATIONS OF AGRICULTURE, FOOD, & NATURAL RESOURCES (Year - 1 Cr)

TAO1000

This is an introductory course designed to inform students about careers in agriculture and understand the important role that agriculture plays in the twenty-first century. This Level I course serves as the foundation course for Agriculture & Food Production Business program of study. Students will have foundational knowledge of various agriculture-related career fields, ecosystems, plant systems, animal systems, and the reproduction systems of plants and animals.

AGRICULTURE & FOOD PRODUCTION BUSINESS 1 (Year - 1 Cr)

TAB2000

This is the second course in the Agriculture and Food Production Business program of study designed to inform students about agriculture and food production related businesses practices, as well as basic business concepts. Students will develop basic skills and knowledge to be successful in agricultural-related business occupations, including learning foundational Hawaiian traditions and values of honoring and conserving the land and its resources. **Prerequisite:** Completion of Foundations of Agriculture, Food, & Natural Resources or Natural Resources Career Pathway Core

AGRICULTURE & FOOD PRODUCTION BUSINESS 2 (Year - 1 Cr)

TAB3000

Agriculture and Food Production Business 2 is the third course in the Agriculture and Food Production Business program of study designed for students interested in successfully owning and operating a business selling plant and/or animal products or commodities. Students will have basic knowledge of the history of agriculture and food production related business in Hawaii, economic principles and risk management considerations, start-up process to creating a business, marketing strategies, and the drafting of a business proposal. **Prerequisite:** Completion of Foundations of Agriculture, Food, & Natural Resources or Natural Resources Career Pathway Core and Agriculture & Food Production Business 1.

Related Club: Future Farmers of America (FFA)



CAREER & TECHNICAL EDUCATION (CONTINUED)



ARCHITECTURE & ENGINEERING



ARCHITECTURAL DESIGN

ARCHITECTURAL DESIGN 1 (Year – 1 Cr)

TAA2000

This course is the second course in the Architectural Design program of study designed to equip students with the knowledge and skills to be successful in various fields of architecture. Upon completion of the course, a proficient student will have a fundamental understanding of requirements to become an architect, urban planning, landscape design and restoration architecture, as well as compliance with applicable federal rules and regulations. A proficient student will also demonstrate technical knowledge and skills through continued technical drawings and models of varying complexity. **Prerequisite: Grade 11/12 only. Completion of Foundations of Architectural Design. This pathway is being phased out so no new participants are being added.**

ARCHITECTURAL DESIGN WORK-BASED LEARNING (Year – 1 Cr)

TAA4100

This course is the capstone course in the Architectural Design program of study. It is intended to provide a work-based learning experience for students to develop further understanding of professional and ethical issues, utilize employability skills, and demonstrate mastery of academic and technical skills learned through the program of study. The work-based learning experience provides opportunities to apply and practice the knowledge and skills learned in previous courses and gives students hands-on practical experiences related to professions in architecture and architectural design. Upon completion of the course, a proficient student will be able to discern multiple pathways to a career in architecture, necessary steps toward applying for a postsecondary credentialed program, necessary steps toward applying for a job, and reflect on program goals and aspirations. Instruction will be delivered through the classroom environment in conjunction with a work-based learning Preparation placement, such as an internship. The student will finalize a digital course portfolio providing evidence of mastery of program standards and readiness for postsecondary and the workforce. **Prerequisite: 12th grade only. Completion of Foundations of Architectural Design and Architectural Design 1 & 2, AND teacher recommendation.**

Students interested in enrolling in Early College

**HWST 100 Piko Hawai'i: Connecting to Hawai'i Island and/or HWST 102 Maui Hawai'i: Hawaiian Spirituality
OR**

HWST 105 Mea Kanu Hawai'i: Hawaiian Plant Culture and/or HAW 101 Elementary Hawai'i Language I

should see Mrs. Frias in N103 for more information.

CAREER & TECHNICAL EDUCATION (CONTINUED)

ARCHITECTURE & ENGINEERING (CONTINUED)



ENGINEERING

FOUNDATIONS OF ENGINEERING TECHNOLOGY (Year – 1 Cr)

TAE1000

This course is an introductory course about careers in engineering. This course serves as the foundation course for the Engineering program of study. Upon completion of this course, a proficient student will have foundational knowledge of the engineering design process, sketching and technical drawing techniques, and foundational elements to engineering and the role of math.

ENGINEERING TECHNOLOGY 1 (Year – 1 Cr)

TAE2000

This course is the second course in the Engineering program of study designed to equip students with the knowledge and skills to be successful in various fields in engineering. Upon completion of this course, a proficient student will have foundational understanding of the role of static and hydraulic in design, internal and external considerations in engineering design, and civil and mechanical engineering. Students will also demonstrate technical knowledge and skills through continued technical drawings and models of varying complexity. **Prerequisite: Completion of Foundations of Engineering Technology**

ENGINEERING TECHNOLOGY 2 (Year – 1 Cr)

TAE3000

This course is the third course in the Engineering program of study designed to provide students with the opportunity to apply skills learned in previous courses and continue to grow and strengthen their individual engineering design process. Upon completion of the course, a proficient student will have additional concepts of engineering, such as kinematics and kinetics, electrical, advanced drawings, and the opportunity to apply learned knowledge and skills across design projects. **Prerequisite: Completion of Foundations of Engineering Technology AND Engineering Technology 1**

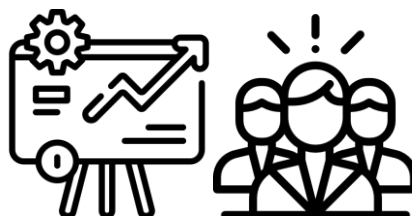
ENGINEERING TECHNOLOGY WORK-BASED LEARNING (Year – 1 Cr)

TAE4100

This is the capstone course in the Engineering program of study. It is intended to provide a practicum experience for students to develop further understanding of professional issues, utilize employability skills, and demonstrate mastery of academic and technical skills learned throughout this program of study. The work-based learning experience provides opportunities to apply and practice the knowledge and skills learned in previous courses and gives students hands-on practical experiences related to professions in engineering. Upon completion of the course, a proficient student will be able to discern multiple pathways to a career in engineering, necessary steps toward applying for a postsecondary program, necessary steps toward applying for a job, and reflect on program goals and aspirations. Instruction will be delivered through the classroom environment in conjunction with a work-based learning placement, such as an internship. The student will finalize a digital course portfolio providing evidence of mastery of program standards and readiness for postsecondary and the workforce. **Prerequisite: 12th grade only. Completion of Foundations of Engineering Technology AND Engineering Technology 1 & 2, AND teacher recommendation.**

CAREER & TECHNICAL EDUCATION (CONTINUED)

BUSINESS MANAGEMENT, FINANCE, & MARKETING



MARKETING MANAGEMENT

FOUNDATIONS OF BUSINESS & MARKETING (Year – 1 Cr)

TBB1000

This is an introductory course designed to inform students about careers in various sectors of business, as well as basic business concepts. This Level 1 course serves as the foundation course for the Marketing Management program of study. Upon completion of the course, students will have foundational knowledge of business and business-related occupations and concepts, including management, finance, marketing, and entrepreneurship and how each intertwines.

ADVERTISING & PUBLIC RELATIONS (Year -1 Cr)

TBR2000

This is the second course in the Marketing Management program of study designed to prepare students for the marketing world by examining basic principles in advertising, such as market segmentation, research, and building promotional campaigns. Upon completion of the course, students will be able to describe and apply multiple aspects of advertising and public relations concepts that keep a business in the consumer's mind through channels such as print, social media, and public relations. **Prerequisite: Completion of Foundations of Business & Marketing or Business Career Pathway Core**

DIGITAL MARKETING & MARKET ANALYTICS (Year -1 Cr)

TBD3000

This is the third course in the Marketing Management program of study designed to inform students about marketing in the digital world. Students prepare for the world of business by examining the uses, marketing strategies, and data generated by social media marketing. Students will be able to describe and apply the process of building a promotional campaign through digital means and the applied use of data contained in these methods to drive market research. **Prerequisite: Completion of Foundations of Business & Marketing AND Advertising & Public Relations**

MARKETING OPERATIONS (Year -1 Cr)

TBM4100

This is the fourth course in the Marketing Management program of study designed to inform students about the use of promotional concepts, visual merchandising, marketing campaigns, and the use of marketing information management to inform product choice and consumer sales. Upon completion of the course, a proficient student will be able to develop marketing and promotional plans based on consumer desires and needs. **Prerequisite: Completion of Foundations of Business & Marketing, Advertising & Public Relations, and Digital Marketing & Market Analytics.**

MARKETING WORK-BASED LEARNING (Year -1 Cr)

TBM4100

This is the capstone course in the Marketing Management program of study. It is intended to provide a work-based learning experience for students to develop further understanding of professional and ethical issues, utilize employability skills, and demonstrate mastery of academic and technical skills learned through the program of study. The work-based learning experience provides opportunities to apply and practice the knowledge and skills learned in previous courses and gives students hands-on practical experiences related to professions in marketing, marketing management and related fields of occupation. Upon completion of the course, a proficient student will be able to discern multiple pathways to a career in marketing, necessary steps toward applying for a postsecondary program, necessary steps toward applying for a job, and reflect on program goals and aspirations. Instruction will be delivered through the classroom environment in conjunction with a work-based learning placement, such as an internship. The student will finalize a digital course portfolio providing evidence of mastery of the program standards and readiness for postsecondary and the workforce. **Prerequisite: 12th grade only. Completion of Foundations of Business & Marketing, Advertising & Public Relations, Digital Marketing & Market Analytics, and/or Marketing Operations, AND teacher recommendation.**

CAREER & TECHNICAL EDUCATION (CONTINUED)

CULTURAL ARTS, MEDIA, & ENTERTAINMENT



FOUNDATIONS OF CREATIVE MEDIA (Year – 1 Cr)

TCC1000

This is an introductory course designed to inform students about careers in creative media, including digital design and digital film production. This Level 1 course serves as the foundation course for both the Digital Design and Film & Media Production programs of study. Upon completion of the course, a proficient student will be able to explain what comprises the creative media industry sector, explain principles of digital design and its influences, demonstrate basic knowledge of digital camera and video equipment, and create a digital photo collection using design and equipment knowledge. A student will also be able to describe various occupations and outline the steps necessary to advance in specific careers. As part of a student's program of study progression, the student will create a digital program of study portfolio, providing evidence of mastery of course standards and readiness to advance and complete the program of study.



FILM & MEDIA PRODUCTION

DIGITAL VIDEO TECHNOLOGY (Year – 1 Cr)

TCV2000

This is the second course in the Film & Media Production program of study designed to introduce students to the post-production process for digital film/video. Students will be able to demonstrate basic digital video and audio recording skills, video and audio uploading and editing techniques, and explain the film production process from concept to completion. Students will create a digital program of study portfolio, providing evidence of mastery of course standards and readiness to advance and complete the program of study. **Prerequisite: Completion of Foundations of Creative Media or Arts & Communications Career Pathway Core**

FILM & MEDIA PRODUCTION 1 (Year-1 Cr)

TCP3000

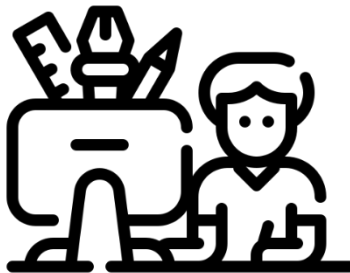
This is the third course in the Film & Media Production program of study designed to introduce students to industry and equipment skills used in film production. Student will demonstrate basic production plan process skills including script writing, storyboard creation, stage setting, lighting equipment and video/audio recording and production editing. Students will also demonstrate basic safety knowledge and protocols that are followed throughout a production process. Students will maintain a digital program of study portfolio, providing evidence of mastery of course standards and readiness to advance and complete the program of study. **Prerequisite: Completion of Foundations of Creative Media AND Digital Video Technology or Arts & Communications Career Pathway Core AND Digital Media Tech**

Related Club: KVIKS

CAREER & TECHNICAL EDUCATION (CONTINUED)

CULTURAL ARTS, MEDIA, & ENTERTAINMENT

(CONTINUED)



DIGITAL DESIGN

DIGITAL DESIGN 1 (Year – 1 Cr)

TCC1000

This is the second course in the Digital Design program of study designed to introduce students to the digital design process and the creation of basic design work and page layouts reflective of the process. Upon completion of the course, students will be able to explain artistic intent and influence, summarize ADA guidance, apply design software techniques, conceptualize and create photographs and illustrations of increasing complexity, and produce basic single and multipage layouts. Students will create a digital program of study portfolio, providing evidence of mastery of course standards and readiness to advance and complete the program of study. **Prerequisite: Completion of Foundations of Creative Media or Arts & Communications Pathway Core**

DIGITAL DESIGN 2 (Year – 1 Cr)

TCC2000

This is the third course in the Digital Design program of study designed to prepare students for advanced design work in the field of digital design. Students will utilize various design software (development and editing) programs and camera/lighting equipment in varying degrees of complexity to create web and 3-dimensional works. Students will be able to create a basic web page layout, conceive and create 3-dimensional models, develop an animation storyboard and apply the principles of animation in the creation of 3-dimensional animation, and produce a digital artwork collection to showcase. Students will maintain a digital program of study portfolio, providing evidence of mastery of course standards and readiness to advance and complete the program of study. **Prerequisite: Completion of Foundations of Creative Media or Arts & Communications Pathway Core AND Graphic Design Tech 1 or Digital Design 1.**



Related Club: Art Club

CAREER & TECHNICAL EDUCATION (CONTINUED)

EDUCATION



TEACHING AS A PROFESSION

FOUNDATIONS OF EDUCATION (Year – 1 Cr)

TEF1000

This course is an introductory course about careers in education and learning support professions including teaching, counseling, and areas of specialization in education. This course serves as the foundation course for the Teaching as a profession (preK-12). Upon completion of the course, a proficient student will have foundational knowledge of human development, understanding of course standards and curriculum, the history of public education, and required ethical and professional responsibilities.

TEACHING AS A PROFESSION 1 (Year – 1 Cr)

TET2000

This course is the second course in the Teaching as a Profession (TAP) (PreK-12) program of study designed for students who are interested in teaching in the classroom. This course covers components on instruction, teaching strategies, student learning, English Learner and special populations, and educational technology. Upon completion of the course, a proficient student will have a fundamental understanding of the trajectory of learning and be prepared for the application of these concepts. **Prerequisite: Completion of Foundations of Education**

TEACHING AS A PROFESSION 2 (Year – 1 Cr)

TET3000

This course is the third course in the Teaching as a Profession (PreK-12) (TAP) program of study designed for students who are interested in teaching in the classroom. This course covers components of instruction and student learning, classroom management, and concepts of higher-order thinking. **Prerequisite: Completion of Foundations of Education AND Teaching as a Profession 1.**

TEACHING AS A PROFESSION WORK-BASED LEARNING (Year – 1 Cr)

TET4100

This course is the capstone course in the Teaching as a Profession (PreK-12) (TAP) program of study. It is intended to provide a practicum experience for students to develop further understanding of professional and ethical issues, utilize employability skills, and demonstrate mastery of academic and technical skills learned through the program of study. The practicum experience provides opportunities to apply and practice the knowledge and skills learned in previous courses and gives students hands-on practical experiences related to professions in PreK-12 education. Upon completion of the course, students will be able to discern multiple pathways to a career in PreK-12 education, necessary steps toward applying for a postsecondary credentialed program, necessary steps toward applying for a job, and reflect on program goals and aspirations. Instruction will be delivered through the classroom environment in conjunction with a work-based learning Preparation placement, such as an internship. The student will finalize a digital course portfolio providing evidence of mastery of program standards and readiness for postsecondary and the workforce. **Prerequisite: 12th grade only. Completion of Foundations of Education, Teaching as a Profession 1 & 2, AND teacher recommendation.**

CAREER & TECHNICAL EDUCATION (CONTINUED)

HEALTH SERVICES



NURSING SERVICES

FOUNDATIONS OF HEALTH SERVICES (Year – 1 Cr)

THF1000

This course is an introductory course about careers in the Health Services field, as well as basic medical skills and terminology. This Level I course serves as the foundation course for the Nursing Services program of study. Upon completion of the course, a proficient student will have foundational knowledge of various medical careers, foundational healthcare skills, safety skills, traditional Hawaiian health care philosophies, and ethics.

ADVANCED HEALTH SERVICES (Year – 1 Cr)

THA2000

This course is the second course for the Nursing Services programs of study. It is designed to develop student understanding of the structures and functions of the human body. Upon completion of the course, a proficient student will be able to characterize the functions of various organs and body systems and their interplay with one another in the human body. As part of a student's program of study progression, the student will maintain a digital program of study portfolio providing evidence of mastery of the course standards and readiness to advance and complete the program of study. **Prerequisite: Completion of Foundations of Health Services**

NURSING SERVICES 1 (Year - 1 Cr)

THS3000

This course is the third course in the Nursing Services program of study and is an applied course designed to develop the skills necessary for a career in nursing. Upon completion of the course, a proficient student will be able to assess, monitor, evaluate, and report patient/client health status, apply safety and wellness protocols, and communicate effectively with the patient and family members. **Prerequisite: Completion of Foundations of Health Services AND Advanced Health Services**

NURSING SERVICES 2 (Year - 1 Cr)

THS4000

This course is the fourth course in the Nursing Services program of study designed to inform and develop the skills necessary for a career in nursing, including awareness of varying levels of occupations and credentials available in the field. Upon completion of the course, a proficient student will be able to demonstrate patient care and wellness techniques, infection control protocols, and basic nursing responsibilities associated with various healthcare facilities. **Prerequisite: Completion of Foundations of Health Services, Advanced Health Services, and Nursing Services 1**

NURSING SERVICES WORK-BASED LEARNING (Year - 1 Cr)

THS4100

This course is the capstone course in the Nursing Services program of study. It is intended to provide a work-based learning experience for students to develop further understanding of professional issues, utilize employability skills, and demonstrate mastery of academic and technical skills learned throughout this program of study. The work-based learning experience provides opportunities to apply and practice the knowledge and skills learned in previous courses and gives students hands-on practical experiences related to nursing services and related fields of occupation. Upon completion of the course, a proficient student will be able to discern multiple pathways to a career in health care, necessary steps toward applying for a postsecondary program, necessary steps toward applying for a job, and reflect on program goals and aspirations. A proficient student will also be able to document logged hours in a medical setting and demonstrate mastery of skills learned throughout this program of study in a medical setting. Instruction will be delivered through the classroom environment in conjunction with a work-based learning placement, such as a clinical internship. The student will finalize a digital course portfolio providing evidence of mastery of the program standards and readiness for postsecondary and the workforce. **Prerequisite: 12th grade only. Completion of Foundations of Health Services, Advanced Health Services, Nursing Services 1, and/or Nursing Services 2, AND teacher recommendation.**

Related Club: Future Health Professionals

CAREER & TECHNICAL EDUCATION (CONTINUED)

HOSPITALITY, TOURISM, & RECREATION



FOUNDATIONS OF CULINARY

FOUNDATIONS OF CULINARY (Year - 1 Cr)

TTU1000

This is an introductory course designed to inform students about careers in the food prep and service industries or related fields, basic nutritional and cooking concepts, and the history and influence of culture on food. This Level 1 course serves as the foundation course for the Culinary Arts program of study. Upon completion of the course, students will demonstrate proper safety protocols in a commercial kitchen and proper use of small and large equipment and supplies. The student will also correctly convert measures and have foundational knowledge of nutrition and cooking techniques and the role of culture in food creation.

CULINARY ARTS FOOD PREP (Year - 1 Cr)

TTP2000

This course is the second course in the Culinary Arts program of study designed to inform and expose students to various basic food preparation methods and considerations found in commercial kitchens and restaurants. Upon completion of this course, students will possess a working knowledge of commercial kitchen safety and sanitation, menu planning, influence of culture on cuisine, basic cooking principles, food preparation skills and methods, and basic platter and table preparation. **Prerequisite: Completion of Foundations of Culinary or Public & Human Services Pathway Core.**

ADVANCED CULINARY ARTS: PASTRY AND SAVORY (Year - 1 Cr)

TTV3000

This is the third course in the Culinary Arts program of study designed to further students' practice with food preparation in the culinary industry. Upon completion of the course, students will be able to demonstrate safe practices in a commercial kitchen, the fundamentals of pastry/dessert creations and the fundamentals of meat preparation. **Prerequisite: Completion of Foundations of Culinary AND Culinary Arts Food Prep OR Public & Human Services Pathway Core AND Culinary 1.**

CULINARY ARTS WORK-BASED LEARNING (Year - 1 Cr)

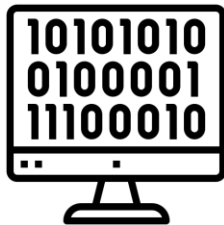
TTR4100

This is the capstone course in the Culinary Arts program of study. It is intended to provide a work-based learning experience for students to develop further understanding of professional issues, utilize employability skills, and demonstrate mastery of academic and technical skills learned through the program of study. The work-based learning experience provides opportunities to apply and practice the knowledge and skills learned in previous courses and gives students hands-on practical experiences related to professions in food prep and service, restaurant operations, and related fields of occupation. Upon completion of the course, a proficient student will be able to discern multiple pathways to a career in culinary arts, necessary steps toward applying for a postsecondary program, necessary steps toward applying for a job, and reflect on program goals and aspirations. Instruction will be delivered through the classroom environment in conjunction with a work-based learning placement, such as an internship. The student will finalize a digital course portfolio providing evidence of mastery of the program standards and readiness for postsecondary and the workforce. **Prerequisite: Completion of Foundations of Culinary, Culinary Arts Food Prep, and Advanced Culinary Arts OR Public & Human Services Pathway Core, Culinary 1, and Advanced Culinary Arts .**



CAREER & TECHNICAL EDUCATION (CONTINUED)

INFORMATION TECH & DIGITAL TRANSFORMATION



PROGRAMMING

FOUNDATIONS OF COMPUTER SYSTEMS & TECHNOLOGY (Year – 1 Cr)

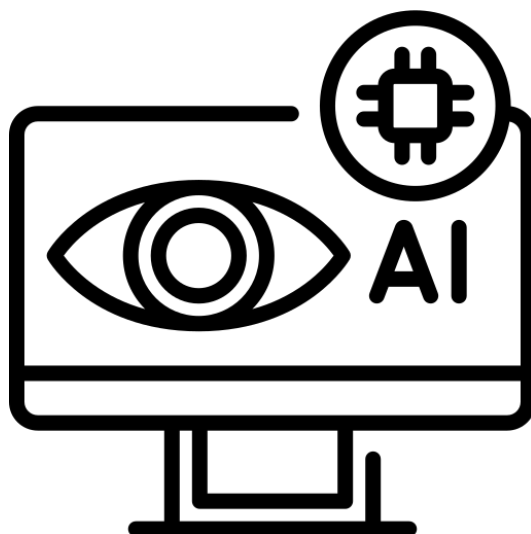
TIF1000

Foundations of Computer Systems and Technology is an introductory course designed to inform students about careers in the information technology sector and basic technologies. This Level 1 course serves as the foundation course for the Programming program of study. Upon completion of the course, a proficient student will be able to describe various information technology occupations and outline the steps necessary to advance in specific careers, demonstrate basic knowledge of computer hardware components and processes, and distinguish foundational concepts in multiple information technology disciplines.

PROGRAMMING 1 (Year – 1 Cr)

TIP2000

Programming 1 is the second course in the Programming program of study designed to introduce students to foundational programming knowledge and basic skills in Python, Java, and C# languages, which are utilized by programmers in mobile app and game development. Upon completion of the course, a proficient student will be able to breakdown the elements of the software development cycle and explain the role specific universal programming components and tools play in programming languages and for programmers. A proficient student will also be able to demonstrate the ability to summarize the key programming elements that comprise Python, Java, and C#, as well as write and run basic programs using those languages. **Prerequisite: Completion of Foundations of Computer Systems & Technology**



CAREER & TECHNICAL EDUCATION (CONTINUED)

LAW & PUBLIC SAFETY



FIRE & EMERGENCY SERVICES

FOUNDATIONS OF FIRE & EMERGENCY SERVICES (Year – 1 Cr)

TLF1000

This course is an introductory course about careers in emergency management and fire management services. This course serves as the foundation course for the Fire & Emergency Services program of study. Upon completion of the course, a proficient student will have foundational knowledge of the regulations, health and safety protocols, communications, and operations in emergency and fire management. Standards in this course are aligned with the National Fire Academy Fire and Emergency Services (FESHE) model.

FIRE & EMERGENCY SERVICES 1 (Year - 1 Cr)

TLF2000 Fire

& Emergency Services 1 is the second course in the Fire & Emergency Services program of study and serves as an overview of emergency preparedness and fire prevention techniques utilized in response to emergencies. This course equips students with the skills and knowledge surrounding a Community Emergency Response Team (CERT), prevention education, and disaster relief and teaches skills involving ropes, knots, ground ladders, and hazardous materials. Upon completion of the course, a proficient student will be able to identify ways to control and prevent fires and identify the magnitude of a disaster and its effects on the surrounding community. Standards in this course are aligned with the National Fire Academy Fire and Emergency Services (FESHE) model. **Prerequisite:** Completion of Foundations of Fire and Emergency Services

FIRE & EMERGENCY SERVICES 2 (Year – 1 Cr)

TLF3000

Fire & Emergency Services 2 is the third course in the Fire & Emergency Services program of study and serves as an overview of fire behavior and firefighter safety. This course equips students with the skills and knowledge surrounding ventilation guidelines, Incident Command Systems (ICS) and Incident Action Plans (IAP). Upon completion of the course, a proficient student will be able to explain standard operating procedures, incident command systems, and proper uses of water supply and hoses. Standards in this course are aligned with the National Fire Academy Fire and Emergency Services (FESHE) model. **Prerequisite:** Completion of Foundations of Fire & Emergency Services AND Fire and Emergency Services 1

FIRE & EMERGENCY SERVICES 3 (Year – 1 Cr)

TLF4000

This course is the third year course in the Fire & Emergency Services program of study. This course equips students for fire training programs and the Firefighter 1 certification. Upon completion of the course, a proficient student will be able to explain building and construction codes, rescue operations, and the 16 lifesaving initiatives in fire service. Standards in this course are aligned with the National Fire Academy Fire and Emergency Services (FESHE) model. **Prerequisite:** Completion of Foundations of Fire & Emergency Services AND Fire and Emergency Services 1 & 2.

FIRE & EMERGENCY SERVICES WORK-BASED LEARNING (Year – 1 Cr)

TLF4100

This course is the capstone course in the Fire & Emergency Services program of study. It is intended to provide a practicum experience for students to develop further understanding of professional issues, utilize employability skills, and demonstrate mastery of academic and technical skills learned through the program of study. The practicum experience provides opportunities to apply and practice the knowledge and skills learned in previous courses and gives students hands-on practical experiences related to professions in fire safety and related fields of occupation. Upon completion of the course, a proficient student will be able to discern multiple pathways to a career in fire safety and emergency services, necessary steps toward applying for a postsecondary program, necessary steps toward applying for a job, and reflect on program goals and aspirations. Instruction will be delivered through the classroom environment in conjunction with a work-based learning Practicum placement, such as an internship. The student will finalize a digital course portfolio providing evidence of mastery of the program standards and readiness for postsecondary and the workforce. **Prerequisite:** 12th grade only. Completion of Foundations of Fire & Emergency Services, Fire and Emergency Services 1, 2, and/or 3, AND teacher recommendation.

CAREER & TECHNICAL EDUCATION (CONTINUED)

LAW & PUBLIC SAFETY

(CONTINUED)



LAW ENFORCEMENT SERVICES

FOUNDATIONS OF LAW ENFORCEMENT SERVICES (Year – 1 Cr)

TLE1000

This course is an introductory course about careers in law enforcement, legal, and correctional systems. This Level 1 course serves as the foundation course for the Law Enforcement Services and Pre-Law programs of study. Upon completion of the course, a proficient student will have foundational knowledge of local, state, and federal laws, concepts of criminal behavior and prevention, the judicial process and an understanding of key roles and responsibilities for occupations in Law Enforcement Services and law.

LAW ENFORCEMENT SERVICES 1 (Year – 1 Cr)

TLE2000

This course is the second course in the Law Enforcement Services program of study designed to inform students about careers in law enforcement, legal, and correctional systems. Upon completion of the course, a proficient student will be able to explain police procedures, sentencing protocols, communication strategies, and professionalism in law enforcement. **Prerequisite: Completion of TLE1000 Foundations of Law Enforcement Services**

LAW ENFORCEMENT SERVICES 2 (Year – 1 Cr)

TLE3000

This course is the third course in the Law Enforcement Services program of study designed to equip students with the knowledge and skills to be successful in the sciences of criminal forensics and investigations. Students will learn crime scene investigation skills, aspects of criminal behavior, and applications of scientific inquiry to solve crimes. Upon completion of the course, a proficient student will be able to explain the foundations of forensic science and criminology, summarize the laws that govern forensic science, and explain the trajectory of forensic science in the modern legal system. **Prerequisite: Completion of TLE1000 Foundations of Law Enforcement Services and Law Enforcement Services 1.**

LAW ENFORCEMENT SERVICES 3 (Year – 1 Cr)

TLE4000

This course is the fourth course in the Law Enforcement Services program of study that provides students the opportunity to apply academic and technical skills learned in previous courses through the researching of current cases and policies aligned with the criminal justice system and by completing an industry-led project. Upon completion of the course, a proficient student will be able to interpret the current criminal justice system and law enforcement procedures in the areas of: ethics and professionalism, community relationships, mental illness and drug abuse, cybersecurity, and criminal investigations. **Prerequisite: Completion of TLE1000 Foundations of Law Enforcement Services and Law Enforcement Services 1 & 2.**

LAW ENFORCEMENT SERVICES WORK-BASED LEARNING (Year – 1 Cr)

TLE4100

This course is the capstone course in the Law Enforcement Services program of study. It is intended to provide a practicum experience for students to develop further understanding of professional and ethical issues, utilize employability skills, and demonstrate mastery of academic and technical skills learned through the program of study. The practicum experience provides opportunities to apply and practice the knowledge and skills learned in previous courses and gives students hands-on practical experiences related to aspects of the criminal justice system and field of occupation. Upon completion of the course, a proficient student will be able to discern multiple pathways to a career in the criminal justice system, necessary steps toward applying for a postsecondary program or training (Academy), necessary steps toward applying for a job, and reflect on program goals and aspirations. Instruction will be delivered through the classroom environment in conjunction with a work-based learning Preparation placement, such as an internship. The student will finalize a digital course portfolio providing evidence of mastery of program standards and readiness for postsecondary and the workforce. **Prerequisite: 12th grade only. Completion of TLE1000 Foundations of Law Enforcement Services, Law Enforcement Services 1, 2, and/or 3 AND teacher recommendation.**

CAREER & TECHNICAL EDUCATION (CONTINUED)

ADVANCED MANUFACTURING



WELDING

FOUNDATIONS OF MANUFACTURING (Year – 1 Cr) – WELDING FOCUS

TAM1000W

Foundations of Manufacturing is an introductory course designed to inform students about careers in advanced manufacturing and related areas, including electronics, welding, automation, robotics, and motor and logic controls. This Level 1 course serves as the foundation course for the Automation and Robotics Technology and Welding programs of study. Upon completion of the course, a proficient student will be able to describe various advanced manufacturing occupations and outline the steps necessary to advance in specific careers, employ tools safely, possess foundational knowledge of advanced manufacturing components and processes, interpret basic project drawings, and demonstrate proper measurement and application of mathematical concepts.

WELDING 1 (Year - 1 Cr)

TAW2000

Welding 1 is the second course in the Welding program of study designed to provide students with the skills and knowledge to effectively perform cutting and welding applications used in the advanced manufacturing industry. Upon completion of the course, a proficient student will develop skills in fundamental safety practices in welding, interpreting drawings, creating computer aided drawings, identifying and using joint designs, efficiently laying out parts for fabrication, basic shielded metal arc welding (SMAW), mechanical and thermal properties of metals, and quality control. **Prerequisite: Completion of Foundations of Manufacturing or IET Career Pathway Core**

WELDING 2 (Year - 1 Cr)

TAW3000

Welding 2 is the third course in the Welding program of study designed to provide students with opportunities to effectively perform cutting and welding applications of increasing complexity used in the industry. Upon completion of the course, a proficient student will build on the knowledge and skills of the Welding 1 course and apply them. Specifically, students will be proficient in (1) fundamental safety practices in welding, (2) gas metal arc welding (GMAW), (3) flux cored arc welding (FCAW), (4) gas tungsten arc welding (GTAW), and (5) quality control methods. **Prerequisite: Completion of IET Career Pathway Core or Foundations of Manufacturing AND Metals Technology 1 or Welding 1.**

WELDING WORK-BASED LEARNING (Year - 1 Cr)

TAW4100

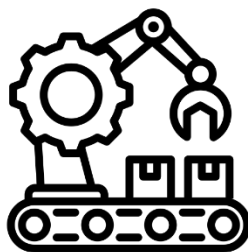
This class is the capstone course in the Welding program of study. It is intended to provide a work-based learning experience for students to develop further understanding of professional and ethical issues, utilize employability skills, and demonstrate mastery of academic and technical skills learned through the program of study. The work-based learning experience provides opportunities to apply and practice the knowledge and skills learned in previous courses and gives students hands-on practical experiences related to professions in welding. Upon completion of the course, a proficient student will be able to discern multiple pathways to a career in welding, necessary steps toward applying for a postsecondary credentialed program, necessary steps toward applying for a job, and reflect on program goals and aspirations. **Prerequisite: 12th grade only. Completion of IET Career Pathway Core or Foundations of Manufacturing AND Metals Technology 1 or Welding 1, Welding 2, AND teacher recommendation.**

CAREER & TECHNICAL EDUCATION (CONTINUED)



ADVANCED MANUFACTURING

(CONTINUED)



AUTOMATION & ROBOTICS TECH

New Class!

FOUNDATIONS OF MANUFACTURING (Year – 1 Cr) – ROBOTICS FOCUS

TAM1000A

Foundations of Manufacturing is an introductory course designed to inform students about careers in advanced manufacturing and related areas, including electronics, welding, automation, robotics, and motor and logic controls. This Level 1 course serves as the foundation course for the Automation and Robotics Technology and Welding programs of study. Upon completion of the course, a proficient student will be able to describe various advanced manufacturing occupations and outline the steps necessary to advance in specific careers, employ tools safely, possess foundational knowledge of advanced manufacturing components and processes, interpret basic project drawings, and demonstrate proper measurement and application of mathematical concepts.

AUTOMATION & ROBOTICS TECH 1 (Year – 1 Cr)

TAR2000

Automation and Robotics Technology 1 is the second course in the Automation and Robotics Technology program of study designed to equip students with an understanding of the different phases of automation in the manufacturing industry. Upon completion of the course, a proficient student will have knowledge and skills in automation, the manufacturing production process, Six Sigma and the interrelationship in advanced manufacturing. **Prerequisite: Completion of Foundations of Manufacturing – Robotics Focus.**

AUTOMATION & ROBOTICS TECH 2 (Year – 1 Cr)

TAR3000

Foundations of Manufacturing is an introductory course designed to inform students about careers in advanced manufacturing and related areas, including electronics, welding, automation, robotics, and motor and logic controls. This Level 1 course serves as the foundation course for the Automation and Robotics Technology and Welding programs of study. Upon completion of the course, a proficient student will be able to describe various advanced manufacturing occupations and outline the steps necessary to advance in specific careers, employ tools safely, possess foundational knowledge of advanced manufacturing components and processes, interpret basic project drawings, and demonstrate proper measurement and application of mathematical concepts. **Prerequisite: Completion of Foundations of Manufacturing – Robotics Focus and Automation & Robotics Tech 1.**

AUTOMATION & ROBOTICS TECH WORK-BASED LEARNING (Year – 1 Cr)

TAR4100

This class is the capstone course in the Automation and Robotics Technology program of study. It is intended to provide a work-based learning experience for students to develop further understanding of professional issues, utilize employability skills, and demonstrate mastery of academic and technical skills learned through the program of study. The work-based learning experience provides opportunities to apply and practice the knowledge and skills learned in previous courses and gives students hands-on practical experiences related to professions in automation and robotics and related fields of occupation. Upon completion of the course, a proficient student will be able to discern multiple pathways to careers in automation and robotics, necessary steps toward applying for a postsecondary program, necessary steps toward applying for a job, and reflect on program goals and aspirations. Instruction will be delivered through the classroom environment in conjunction with a work-based learning placement, such as an internship or apprenticeship. The student will finalize a digital course portfolio providing evidence of mastery of the program standards and readiness for postsecondary and the workforce. **Prerequisite: 12th grade only. Completion of Foundations of Manufacturing (Robotics Focus), Automation & Robotics Tech 1 &/or 2, AND teacher recommendation.**

Related Club: Robotics

CAREER & TECHNICAL EDUCATION (CONTINUED)

RESIDENTIAL & COMMERCIAL CONSTRUCTION



FOUNDATIONS OF CONSTRUCTION (Year - 1 Cr)

TCF1000

Foundations of Construction is an introductory course about careers in building and construction. This Level 1 course serves as the foundation course for the Residential & Commercial Construction program of study. Upon completion of this course, a proficient student will be able to describe various construction occupations and outline the steps necessary to advance in specific construction careers. Students will be able to employ tools safely, explain building systems and materials, and interpret basic construction drawings to complete projects, demonstrating proper measurement and application of mathematical concepts.

RESIDENTIAL & COMMERCIAL CONSTRUCTION 1 (Year - 1 Cr)

TCR2000

This course is the second course in the Residential & Commercial Construction program of study intended to have students develop an understanding of the different phases of a construction project from start to finish. Upon completion of this course, a proficient student will be able to demonstrate knowledge and skills in the early phases of building construction, including site layout, concrete and floor to ceiling systems. Proficient students will be able to frame walls, ceilings, and floors of a structure, while safely employing tools and interpreting construction drawings to complete projects. **Prerequisite: Completion of Foundations of Construction.**

RESIDENTIAL & COMMERCIAL CONSTRUCTION 2 (Year - 1 Cr)

TCR3000

This course is the third course in the Residential & Commercial Construction program of study designed to allow students to develop an understanding of the different phases of a construction project from start to finish. Upon completion of this course, a proficient student will be able to demonstrate knowledge and skill in the later phases of building construction including roofing systems, exterior finishing, stair framing systems, masonry systems, and MEP systems. Students will be able to perform masonry work, frame roofs, install shingles on roofs, apply exterior finishes, and build and install stairs while safely employing tools and interpreting construction drawings to complete projects. **Prerequisite: Completion of Foundations of Construction AND Residential & Commercial Construction 1**

RESIDENTIAL & COMMERCIAL CONSTRUCTION WORK-BASED LEARNING (Year - 1 Cr)

TCR4100

This course is the capstone course in the Residential & Commercial Construction program of study. It is intended to provide a work-based learning experience for students to develop further understanding of professional and ethical issues, utilize employability skills, and demonstrate mastery of academic and technical skills learned through the program of study. The work-based learning experience provides opportunities to apply and practice the knowledge and skills learned in previous courses and gives students hands-on practical experiences related to professions in construction and construction management. Upon completion of the course, a proficient student will be able to discern multiple pathways to a career in construction, necessary steps toward applying for a postsecondary credentialed program, necessary steps toward applying for a job, and reflect on program goals and aspirations. Instruction will be delivered through the classroom environment in conjunction with a work-based learning placement, such as an internship or apprenticeship. The student will finalize a digital course portfolio providing evidence of mastery of program standards and readiness for postsecondary and the workforce. **Prerequisite: 12th grade only. Completion of Foundations of Construction, Residential & Commercial Construction 1 & 2, AND teacher recommendation.**

*** The following CTE programs and Buildings are located in an inaccessible area: Agriculture, Residential & Commercial Construction, Manufacturing, and Engineering. Students who experience mobility impairments may contact their counselor or Heidi Pana, Vice Principal, at (808) 313-5556 or the school's main office at (808) 313-5502 to determine accommodations (state motor vehicle or other means) that may be available to support their physical access on campus and to/from classes.

FINE ARTS

PERFORMING ARTS



HAWAIIAN DANCE

HAWAIIAN DANCE I (Year – 1 Cr) **FDK1000**
“A`a i ka hula, waiho ka hilahila ma ka hale” *When one wants to dance the hula, bashfulness should be left at home.* This beginning course is designed to provide students with the opportunities to learn the historical, cultural and expressive significance of the hula. The course will cover hula basics such as protocol, basic feet and hand gestures/positioning of the hula kahiko (traditional) and hula `auana (contemporary). Students will also learn about costume and lei making. Implements will be introduced at appropriate levels.

HAWAIIAN DANCE 2 (Year – 1 Cr) **FDK2000**
“A`a i ka hula, waiho ka hilahila ma ka hale” *When one wants to dance the hula, bashfulness should be left at home.* This is an intermediate course which provides further opportunities for students to strengthen and refine their dancing skills learned in Hawaiian Dance 1. As students advance, dance routines become more complex as they are required to do performances in and out of the school environment to strengthen their projection of story and choreography. Emphasis is placed on the cultural and historical contexts in which the hula was developed. **Successful completion of Hawaiian Dance 1 with a “C” or better and teacher recommendation.**

HAWAIIAN DANCE 3 (Year – 1 Cr) **FDK3000**
“A`a i ka hula, waiho ka hilahila ma ka hale” *When one wants to dance the hula, bashfulness should be left at home.* This is an advanced course in performance to strengthen and refine dancing skills learned from Hawaiian Dance 2. As students advance, dance routines become more complex as they are required to do performances in and out of the school environment to strengthen their projection of story and choreography. Emphasis is placed on the cultural and historical contexts in which the hula was developed. **Successful completion of Hawaiian Dance 2 with a “C” or better and teacher recommendation.**

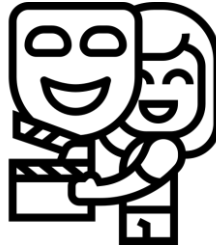
DIR STUDY – HAWAIIAN DANCE (Year - 1 Cr) **FDD4000**
This course is designed to meet the unique interests and skills of students that want to continue studying Hawaiian Dance after year 3 through self-directed study. With the approval and guidance of the teacher, the student will develop and implement a project or plan of study to pursue his/her area of interest in Hawaiian dance. This project may or may not be implemented in Hawaiian Dance 1-3. **Prerequisites: Successful completion of Hawaiian Dance 3 with a B or better and teacher recommendation.**



Hawaiian Dance/Hula is a great class for guys too!
Hawaiian Dance looks great on a transcript and gives you unique flavor to help you stand out from the crowd on college applications! Who else can offer you such an interesting elective?

Related Club: Na Liko Lehua O Hilo Hanakahi & Hawaiian Club

FINE ARTS (CONTINUED)



DRAMA and THEATER

BEGINNING ACTING (Year – 1 Cr)

FTA1300

Beginning Acting focuses on pantomime, creative dramatics, and improvisations. Students are taught basic techniques of movement, character, and voice, practicing these techniques through dramatizations and improvisations. Body and vocal exercises, along with techniques of relaxation and sensory awareness, lead to performance projects that are presented before an audience.

INTERMEDIATE ACTING (Year – 1 Cr)

FTA2000

Acting principles, such as stage business, characterizations, interpretation and analysis of roles, vocal and emotional projection are applied to scripted and original plays. Students are given opportunities to perform different styles of acting, including classical, contemporary, and acting for the camera.

Prerequisite: Completion of Beginning Acting

ADVANCED ACTING (Year – 1 Cr)

FTA3000

This course emphasizes more intensive work on special acting techniques. Character, line, and play analysis are integral parts of this course. Students are expected to perform for school and/or community projects. **Prerequisite: Completion of Intermediate Acting**

DIRECTED STUDY IN DRAMA AND THEATRE (Year – 1 Cr)

FTD1000

This course is provided to meet the unique interest and skills of students through independent or small group study. The instructor will select drama standards appropriate for students and may integrate other Fine Arts standards. **Prerequisite: Completion of Advanced Acting and teacher recommendation**

EXPLORATIONS IN DRAMA

FTE1000

This introductory course is designed to enhance understanding of life through the study and performance of dramatic works. Emphasis is on developing students' ability to express themselves freely and establish personal criteria for critical evaluation of drama activities. Students will gain insight into a broad spectrum of theatre through study of various phases of play production.



Hilo High School offers an afterschool performing arts program, PALC, during the school year. Students earn semester credits in Theater Arts, Theater Crafts, or Play Production. Enrollment information will become available through the PALC Coordinator once the school year begins. (See PALC page at back of catalog for course descriptions.)

FINE ARTS (CONTINUED)

MUSIC

Music supports brain development, lowers stress levels, and provides opportunities for socialization. If you have ever thought about playing or writing music/lyrics, one of our music courses might be for you!



GUITAR 1 (Year - 1 Cr) **FMF1000**
This class is for students who want to learn to play the guitar. Students will learn guitar performance skills while learning the fundamentals of music. Various styles of music will be covered, including classical, folk & pop, and slack key. No experience is necessary. **Students are highly encouraged to have their own guitar.**

GUITAR 2 (Year - 1 Cr) **FMF2000**
GUITAR 3 (Year - 1 Cr) **FMF3000**
GUITAR 4 (Year - 1 Cr) **FMF4000**
These courses are the next in the series after Guitar I. The course will focus on intermediate guitar technique. Students will learn various styles. **Prerequisite: Completion of previous Guitar level or teacher approval. Students are highly encouraged to have their own guitar.**



PIANO 1 (Year - 1 Cr) **FMK1000**
This course is for students who want to learn beginning piano. Students will learn basic piano skills and musicianship. **No prior experience is necessary.**

PIANO 2 (Year - 1 Cr) **FMK2000**
PIANO 3 (Year - 1 Cr) **FMK3000**
PIANO 4 (Year - 1 Cr) **FMK4000**
These courses are the next in series after Piano I. Students will focus on intermediate to advanced piano technique. Students will learn & be able to play in various styles. **Prerequisite: Completion of the previous Piano level or teacher approval.**



ORCHESTRA 1 (Year - 1 Cr) **FMV2000**
ORCHESTRA 2 (Year - 1 Cr) **FMV3000**
ORCHESTRA 3 (Year - 1 Cr) **FMV4000**
ORCHESTRA 4 (Year - 1 Cr) **FMV5000**
Students will learn the fundamentals of string playing on the violin, viola, cello, or string bass. Prior music experience is preferred but not required. Ability to read music will be beneficial and accelerate student's learning. **Prerequisite: Successful completion of the previous level.**

Hilo High is the only school on the Hawaii Island that offers Orchestra!

FINE ARTS (CONTINUED)



BAND 1 (Year - 1 Cr)

FMB2000

Band 1 is not an introductory course. It is intended for students who have had prior experience and can demonstrate proficiency in technical music skills. Mandatory public performances may include, but are not limited to, concerts, athletic events, parade marching. **Prerequisite: Teacher approval required for incoming 9th grade placement. Current high school students should see Band Director for approval.**

BAND 2 (Year - 1 Cr)

BRASS SECTION FMB3000B
WOODWIND SECTION FMB3000W

This course is for students who have fulfilled the requirements of Band 1. Mandatory public performances may include, but are not limited to, concerts, athletic events, parade marching. **Prerequisite: Band 1 and/or teacher approval.**

BAND 3 (Year - 1 Cr)

BRASS SECTION FMB4000B
WOODWIND SECTION FMB4000W

This course is for students who have fulfilled the requirements for Band 2. Mandatory public performances may include, but are not limited to, concerts, athletic events, parade marching. **Prerequisite: Band 2 and/or teacher approval.**

BAND 4 (Year - 1 Cr)

BRASS SECTION FMB5000B
WOODWIND SECTION FMB5000W

This course is for students who have fulfilled the requirements for Band 3. Mandatory public performances may include, but are not limited to, concerts, athletic events, parade marching. **Prerequisite: Band 3 and/or teacher approval.**

Do you want to go away for college?

Playing in a college band may provide you with scholarship money to make that dream come true!
Many of our former students have found opportunities through music and you could be next!

Students interested in enrolling in Early College

SP 151: Personal & Public Speech

should see/email Mrs. Kellie Frias in N103
for more information.

FINE ARTS (CONTINUED)



VISUAL ARTS



CERAMICS 1 (Year – 1 Cr)

FVL1000

An introductory course of basic hand-building skills. Students will develop their skills with projects using the techniques of pinch, coil, slab, and creative free form. Glazing techniques and other methods of surface decoration are explored to give students opportunities to include them in their clay projects. Students will become familiar with and use the ceramics vocabulary as introduced, understand clay characteristics and its limitations. Students will be evaluated by completed projects, note taking, written tests and written reflections.

CERAMICS 2 (Year – 1 Cr)

FVL2000

An intermediate course that offers students opportunities to refine methods in clay hand-building and/or wheel-throwing, glazing and surface decoration. Students will become familiar with pottery of the Southwest American Indian Pueblo culture (historical and contemporary) and will execute pottery using the specific techniques and decorations exclusive to the culture. Experimenting with glazes and using available resources to explore artists' techniques and the creative aspects of ceramics are encouraged. Students will be evaluated by completed projects, note taking, and written reflections. **Prerequisites: Ceramics 1 and teacher approval.**

CERAMICS 3 (Year – 1 Cr)

FVL3000

An advanced course in hand-building and/or wheel-throwing with the application of elements and principles of design and craftsmanship. The major emphasis is creativity and further experimentation in firing, glazing, and decorative techniques. Solving technical problems is an essential part of the course. Students will be evaluated by completed projects, note taking, and written reflections. If a student's plan is to pursue a fine arts degree, a portfolio will be included as part of the evaluation. **Prerequisites: Ceramics 1 and 2 and teacher approval.**



COMPUTER ART (Year – 1 Cr)

FVW1000

This is an introductory course to explore the use of digital media for the creation of art. Computer software such as Photoshop and Illustrator will be used in addition to digital cameras, scanners, printers, and copiers. The emphasis will be on creating original images, manipulating existing images, and using the unique characteristics of digital media for personal expression. The student will apply the elements and principles of art to their work as they use digital tools for artistic expression.



DRAWING & PAINTING 1 (Year – 1 Cr)

FVQ1000

This is a beginners level course to Drawing & Painting. Students are given the opportunity to practice a variety of skills and experiment with a wide range of 2D materials. Topics will relate to visual culture, art history, and contemporary art. Students will develop their own artistic style by creating and reflecting on their artwork.

DRAWING & PAINTING 2 (Year – 1 Cr)

FVQ2000

This course expands on the skills and topics covered in Drawing & Painting 1. Students will continue to practice a variety of skills and experiment with a wide range of 2D materials. As new topics are discussed, students gain further knowledge of visual culture, art history, and contemporary art. Personal artistic style and preferences will become more evident and defined. **Prerequisite: Drawing & Painting 1**

FINE ARTS (CONTINUED)

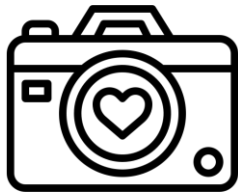
VISUAL ARTS (CONTINUED)



GENERAL ART 1 (Year – 1 Cr)

FVB1000

This course is an introduction to art practices and procedures. Students will experience a variety of art techniques like drawing, painting, and three-dimensional sculpture & design. Some historical artwork will be studied. The elements of art and design will be practiced.



PHOTOGRAPHY 1 (Year – 1 Cr)

FVP1000

This is an introductory course in photography. Basic techniques taught are composition, exposure, lighting, camera care and operation, and editing techniques on Adobe Photoshop. Some advanced skills and techniques will be introduced. **Optional Recommended Supplies:** 35 mm SLR digital camera.



DIRECTED STUDIES IN ART (Year – 1 Cr)

CERAMICS

FVD1000C

DRAWING & PAINTING

FVD1000D

PHOTOGRAPHY OR COMPUTER ART

FVD1000P

This is an opportunity for an in-depth study of various modes of expression. The course is designed to meet the interests and skills of the student through individual objectives. The visual presentations should result from personal inquiry and research. **Prerequisites:** Completion of highest level of courses available and teacher approval.

ADVANCED PLACEMENT (AP) 2D DESIGN (Year-1 Cr)

FVA3000

This is a highly advanced college level course in 2-dimensional Art & Design. Students are expected to analyze, write, and verbally discuss their artwork. Students are also expected to visually synthesize ideas using art materials and processes at a higher level. **Prerequisite:** Drawing & Painting 1 & 2. **Students are required to participate in College Board evaluation (possibly submission of a portfolio of works to be reviewed) for AP credit. AP Agreement is required. See Ms. Zanetos for more information.**

Related Club: Art Club

Related Course: Yearbook (page 55)

Students who have enjoyed Computer Art or Photography are encouraged to explore careers using these skills in:

TCC1000 Foundations of Creative Media

TCD2000 Digital Design I

TCD3000 Digital Design II

Contact Ms. Eberly for more information.

ENGLISH LANGUAGE ARTS



ENGLISH 1 GR 9 (Year – 1 Cr)

LCY1010

ENGLISH 2 GR 10 (Year – 1 Cr)

LCY2010

ENGLISH 3 GR 11 (Year – 1 Cr)

LCY3010

ENGLISH 4 GR 12 (Year – 1 Cr)

LCY4010

English 1 - 4 courses are heterogeneously grouped and encompass ability levels in reading stanines 1 through 9. The English Phase courses provide students in the 9 - 12 grade levels with balanced English programs emphasizing and integrating four areas: reading, writing, literature and language study, and oral communication. All phase courses address the Language Arts Standards and the State of Hawaii GLO. Students will demonstrate appropriate speaking and listening skills; use language to elicit a desired response while adapting wording and strategies according to a variety of situations and audiences AND read a wide variety of literature that spans time and cultures as an understanding of one's life and world is expanded.

Honors and AP classes require a signed student/parent agreement and possible mandatory summer assignments.

ENGLISH HONORS – Gr. 9 (Year - 1 Cr)

LCY1010H

Ninth grade honors provides highly motivated freshmen with the opportunity to closely examine different genres of literature: poetry, non-fiction, fiction and drama. Students read, discuss and write about the text under consideration, focusing on critical thinking skills and the articulation of thought.

ENGLISH HONORS – Gr. 10 (Year – 1 Cr)

LCY2010H

Students will read a variety of literature from around the world, which explores the thematic concept of "culture". Students will learn information about history, the writers, their works, and literary movements under study. In addition to the assigned texts, students will be responsible for outside independent reading and reporting. Students will learn concepts through a variety of writing assignments, which will stem directly from the reading. Students will be provided the opportunity to improve reflective, analytical, critical, and persuasive skills. Complex group and individual presentations will be created to build confidence and mastery skill in oral communication.

The courses listed below may be used in grades 11 and/or 12 to fulfill the English requirement for graduation.

ADVANCED PLACEMENT (AP) ENGLISH - LANG & COMP (Year - 1 Cr)

LAY6010

This college level course is offered to highly motivated 11th grade students. This course enables students to study and write various types of analytical or persuasive essays on nonliterary topics. The focus is on language, rhetoric, and expository writing. **Prerequisites: Teacher recommendation and summer assignments. Students must take the AP exam to earn full 5 point credit. No class drops once enrolled.**

ADVANCED PLACEMENT (AP) ENGLISH - LIT & COMP (Year - 1 Cr)

LAY6100

This college level course is offered to highly motivated 12th grade students. Through class discussions, weekly timed writings, essays, literature analysis, and group projects, students will synthesize concepts and develop critical thinking and social skills in preparation for college and post-high school careers. **Prerequisites: Teacher recommendation and summer assignments. Students must take the AP exam to earn full 5 point credit. No class drops once enrolled.**

Students interested in enrolling in Early College English 100: Composition I should see or email Mrs. Frias in N103 for more information.



ENGLISH LEARNER (EL) PROGRAM

The Hilo High School English Learner (EL) Program strives to ensure that students with limited English proficiency have equal access to educational opportunities. Instructors and staff provide services that support achieving increasingly higher levels of academic English proficiency and meeting the same content standards that are expected of all students..

ESOL 1A/1B (2 Sem – 0.5 Cr) NEI1020/NEI1025
ESOL 2A/2B (2 Sem – 0.5 Cr) NEI1030/NEI1035

English Language Development (ELD) electives are designed to provide English Learners with the social and academic communication skills necessary for successful participation in the mainstream, sheltered classroom. Curriculum and texts vary with the needs of the student population in any given year. Taken in conjunction with sheltered ELA courses, ELD classes provide differentiated instructional opportunities to practice listening, speaking, reading and writing, in standard academic English. The goal of the ELD class is to meet target scores on the annual WIDA and SBA exams, and to develop the language skills necessary to achieve overall success in school, career, and community.

COMMUNICATION LITERACY SKILLS FOR NEWCOMERS
A/B (2 Sem – 0.5 Cr each) NEI1000/ NEI1010

The Newcomer Program is designed for newly-arrived immigrant students with little or no English, (i.e., Overall English Language Proficiency Level 1-2); students who have limited or interrupted formal schooling experiences, and/or students who display noticeable literacy and content achievement gaps. It is structured as a self-contained, maximum two-semester program, consisting of language, cultural, social, and academic supports such as basic language literacy, mathematical literacy, and academic content preparation, in an emotionally safe environment. Guidance for designing the English development course is addressed through the Common Core Standards for English Language Arts, and the WIDA English Language Development Standards



UNIVERSITY of Hawai'i
HAWAII
COMMUNITY COLLEGE

Did you know that you could participate in high school and college commencement in the same year?

You can earn a Hawai'i Life Styles Certificate (ASC-HLS) from Hawaii Community College while you are still in high school!

It is completed over two years and these are the courses that you would take through our FREE Early College program:

**(Year 1) HWST 100 Piko Hawai'i:
Connecting to Hawai'i Island
and HWST 102 Maui Hawai'i:
Hawaiian Spirituality
and**

**(Year 2) HWST 105 Mea Kanu Hawai'i:
Hawaiian Plant Culture
and HAW 100 Elementary Hawai'i
Language I**

See or email Mrs. Kellie Frias in N103 for more information.

Early College courses also count toward the two accelerated courses needed for graduation with an Academic Honors Certificate!

HEALTH & PHYSICAL EDUCATION



HEALTH: TODAY & TOMORROW (Sem – 0.5 Cr)

HLE1000

Instructional emphasis in this required course is on the health needs & interests of students which will prepare them to take full responsibility for their health as adults. Included in this course will be topics on human growth & development (physically, mentally, socially), human relationships & peer pressure, substance abuse, chronic disorders, common health problems of teenagers, family life education, first aid & cardiopulmonary resuscitation.

PHYS ED LIFETIME FITNESS (Sem – 0.5 Cr)

PEP1005

This standards-based course is required for graduation. It will integrate physical activity and personal fitness by exposing students to the wide range of physical activity resources available in the school and community. Students will self-assess their personal fitness level and document their physical activity. Uniform will be required. **Required for Grade 9. Scheduled with TGG1103 Transition to High School.**

**PHYS ED – LIFETIME ACTIVITIES (Sem – 0.5 Cr)

PEP1010

This course develops and strengthens physical movement forms, concepts, principles, and skills through participation in a variety of physical fitness experiences, including target, net, and field invasion type games. Students will assess personal levels of physical fitness that reinforce physical activity in their daily lives. Students should ultimately be motivated to become lifelong active participants in physical activity. **Scheduled with HLE1000 Health for all Gr 10.**

The Basic Elective PE courses marked with an asterisk (*) fulfill the required ½ credit PE elective. PE Classes are not repeatable for credit. ****PEP1010 PE Lifetime Activities will be scheduled for all 10th graders with Health.**



*SWIMMING LIFETIME ACTIVITIES (Sem – 0.5 Cr)

PSP1670

This course is designed for students to develop and strengthen swimming skills and principles of fluid dynamics (efficient stroke patterns), and learn safety procedures required to safely and competently demonstrate a variety of swimming skills. Swimming skills include kicking, floating, breathing, treading water, turning, strokes (free style, butterfly, back, breast, etc.), and should be applied to swimming activities which could include a variety of water games (basketball, volleyball, polo, etc.) and team and individual relays.

*SPECIAL SWIMMING LIFETIME ACTIVITIES (Sem – 0.5 Cr)

PSP1680

This course is designed for students to strengthen and *apply* swimming skills and safety procedures to a variety of aquatic events and activities that could include water games (polo), synchronized swimming, and individual or team relays. Other aspects of the course may focus on life saving and water rescue techniques as well as CPR. Participants may be eligible to receive appropriate certifications (water safety, CPR, etc.) upon completion of the course.

RECREATIONAL LEADERSHIP (Sem – 0.5 Cr)

PLP1710

School Service (Sem – NO CREDIT)

XTH4012

This course is designed for those students who are interested in careers in the physical activity, movement, and educational fields of study. Instruction and teaching experiences will be provided to enhance students' ability to facilitate the acquisition of movement skills for their peers and contribute to the day-to-day activities by peer-teaching and officiating. Instruction will focus on developing leadership ability, enhancing problem-solving skills, and learning to work as a team. Responsibilities will include assisting the PE teacher with class organization, equipment and class monitoring, and school-wide physical activity promotion. **This course is available to students in Grades 11-12. Students interested in a year-long experience should sign up for both courses listed above. Required Prerequisite: Teacher or Department Head Approval.**

*PHYS FITNESS FOR LIFE 1A/1B (2 Sem – 0.5 Cr each) PFP1310/1320

*PHYS FITNESS FOR LIFE 2A/2B (2 Sem – 0.5 Cr each) PFP 1330/1340

These courses are designed to introduce and/or reintroduce basic training principles and personal fitness assessments to guide students in planning or updating and implementing and/or continuing fitness training programs. Students will participate in an initial fitness assessment, which could include but is not limited to mile run, shuttle, run, sit ups, pull ups, vertical hang, standing long jump, vertical leap, 600 yard walk-run, etc. **Prerequisite: Successful completion of the previous level.**



TEAM SPORTS 1/2 (2 Sem – 0.5 Cr each)

PTP1640/1650

TEAM SPORTS 3 (Sem – 0.5 Cr)

PTP1660

This series of courses is designed to strengthen physical movement forms, concepts, principles, and skills through participation in a variety of team sports. Team sports could include, but are not limited to: adventure games, basketball, volleyball, soccer, softball, team handball, flag football, and ultimate Frisbee. Students will learn positions represented in the different sports and basic rules, etiquette and strategies needed to participate competently in each sport. **Prerequisite: Successful completion of the previous level.**

WEIGHT & RESIST TRNG 1A/1B (2 Sem – 0.5 Cr each) PWP1210/1220

WEIGHT & RESIST TRNG 2A/2B (2 Sem – 0.5 Cr each) PWP1230/1240

A series of courses designed sequentially & progressively to help each student develop weight and resistance training safety and etiquette as well as define muscular strength & endurance. Various weight training exercises and programs may include, but are not limited to plyometric, free weights, own body weight, resistance bands, pulleys, medicine and stability balls, etc. **Prerequisite: Successful completion of the previous level.**



ARMY JUNIOR RESERVE OFFICER TRAINING CORPS (JROTC)

The Junior Reserve Officer Training Corps (JROTC) program is a cooperative effort on the part of the Army and Hilo High School to provide students with training and experience in positive leadership and citizenship, as well as other subjects, which provide all-around development. The courses are supplemented by a variety of activities, such as Academic Team, Color/ Honor Guard, Drill Team, Adventure Training (Raiders), field training exercises and parades, to broaden the high school experience.

Content standard: JROTC supports most of the benchmarks within the Career and Technical Education content standards. Its mission and objectives are promoting citizenship, developing leadership, enhancing critical thinking and communication skills, using differentiated instruction to enable better understanding, using rubrics to measure and assess a set list of criteria and objectives. Strengthening self-esteem, developing self-discipline, providing the incentive to live drug free, improving physical fitness, promoting high school graduation and helping participants learn to work as team members. This program prepares high school students for leadership roles while making them aware of their rights, responsibilities, and privileges as American citizens. It is a stimulus for promoting graduation from high school. JROTC provides instruction and rewarding opportunities, which will benefit the student, community, and Nation.

ARMY JROTC 1 (Leadership Education and Training I)

TJR1000

The mission of Leadership Education and Training (LET) 1 courses provides cadets with an introduction to Army JROTC, American Military traditions, customs and courtesies, moving up in Army JROTC rank and structure, leadership defined, using your leadership skills/ taking charge, stationary movements, steps in marching, weapons safety through air rifle marksmanship, drill and ceremonies, and an introduction to methods of instruction in which cadets are taught how to prepare a short oral presentation and basic leadership techniques. Emphasis is placed on understanding the duties and responsibilities of citizenship. Cadets are required to wear uniforms one time each week.

ARMY JROTC 2 (Leadership Education and Training II)

TJR2000

The second year of Leadership Education and Training or LET 2 courses include applied leadership, assumption of leadership duties (which may require cadets to assume Battalion leadership duties and responsibilities), communication, citizenship in American history and government, map skills, wellness/ fitness, and first-aid. It also includes drill and ceremony and leadership techniques. The wearing of the uniform and integrated curricular activities are the same as for LET 1. **Requires successful completion of Army JROTC 1.**

ARMY JROTC 3 (Leadership Education and Training III)

TJR3000

The third year of Leadership Education and Training or LET 3 courses includes applied leadership (which may require them to assume Battalion leadership duties and responsibilities), communication, management, planning, problem-solving, development of subordinates, performance appraisal, counseling, orientation and military service opportunities, applied methods of instruction to include presentation of material to lower classmates, drill and ceremony, and advanced leadership techniques. The wearing of the uniform and integrated curricular activities are the same as for LET 1. **Requires successful completion of Army JROTC 2.**

ARMY JROTC 4 (Leadership Education and Training IV)

TJR4000

The fourth year of Leadership Education and Training or LET 4 includes practical exercises in command and leadership, advanced methods of instruction, which include presentation of instruction to lower JROTC classes, review of staff functions and actions, styles of leadership, management skills, staff-commander relationships, and self-study in selected optional subjects. They continue to develop their leadership skills and plan special unit events such as the military ball or the annual awards banquet. The wearing of the uniform and integrated curricular activities are the same as for LET 1. **Requires successful completion of Army JROTC 3.**

ARMY JROTC LEADER 1/2 (Leader Training)

TJR9010/ TJR9020

A special course designed for the motivated student, who is anxious to expand his knowledge and skills in JROTC Leadership subjects.
INSTRUCTOR APPROVAL REQUIRED.

MATHEMATICS

This table represents the approved sequence by the Hilo High School Math Department. **Students will not be allowed to take more than one math course per year due to the progression of the mathematics discipline.** Algebra 1, Geometry, and one math elective are required for graduation with a high school diploma. Academic and STEM Honors certificates require Algebra 1, Geometry, Algebra 2, and one math credit beyond Algebra 2.

	GRADE 9	GRADE 10	GRADE 11	GRADE 12
General Student	Modeling Our World 1 Algebra 1	Algebra 1 Geometry	Geometry Algebra 2	Algebra 2 Prob/Stats OR Trig/Algebra 3 OR Intro to College Math (ICM)
College Prep Student	Algebra 1	Geometry	Algebra 2	Prob/Stats OR Trig/Algebra 3 OR Intro to College Math (ICM)
Accelerated Student	Geometry X	Algebra 2X	Trig/Analytic Geometry	AP Calculus

(GR 9) MODELING OUR WORLD I (Year – 1 Cr) MAX1080

The course focuses upon the use of modeling to represent mathematical and real-world contexts. The application and creation of mathematical models engages students in learning experiences that relates classroom mathematics to everyday life and decision-making. The course provides supplemental learning opportunities for students needing additional support to be successful in Algebra I. **Prerequisites: Teacher approval/recommendation from 8th grade teacher**

ALGEBRA 1 (Year – 1 Cr) MAX1155

Topics include the real number system, first degree equations & inequalities, one & two variables, polynomials, graphs, products & factors of polynomials, quadratic equations, rational & irrational numbers.

(GR 9) GEOMETRY X (Year – 1 Cr) MGX1150X

Recommended for students Algebra 1 grade was “A” or “B”, the course develops the student’s awareness of the processes of deductive & inductive reasoning & understanding & use of the relationships among points, lines, & figures. These include properties of various figures, relations among lines such as parallelism, intersections, concurrency & perpendicularity, & relations among figures such as congruence, similarity, symmetry, & rigid motions. **Prerequisites: 8TH Grade Credit in Algebra 1 and teacher recommendation.**

Related Club: Math Club

GEOMETRY (Year – 1 Cr) MGX1150

This course develops the student's awareness of the processes of deductive & inductive reasoning & understanding & use of the relationships among points, lines, & figures. These include properties of various figures, relations among lines such as parallelism, intersections, concurrency & perpendicularity, & relations among figures such as congruence, similarity, symmetry, & rigid motions. **Prerequisite: Credit in Algebra 1.**

ALGEBRA 2 (Year – 1 Cr) MAX1200

This course extends the algebraic skills & knowledge developed in Algebra 1 by exploring the real number system in greater depth, providing exposure to various algebraic techniques, & developing the concepts of function including graphing techniques & inverse functions. **Prerequisites: Credit in Algebra 1 and Geometry or Geometry X.**

ALGEBRA 2X (Year – 1 Cr) MAX1200X

This course is structured to accommodate the highly motivated math student & will proceed at a faster pace building upon & extending the basic concepts & skills studied in Alg. I. In addition, new & more advanced topics are introduced which will serve as a foundation for higher math. Such topics include systems of quadratics, exponential & logarithmic functions, complex numbers, sequence & series, probability, permutations & combinations, determinants, & matrices. **Prerequisites: Credit in Algebra and Geometry X with a “C” or better and teacher recommendation.**

MATHEMATICS (CONTINUED)

TRIGONOMETRY & ALGEBRA 3

(2 Sem – 0.5 Cr each)

MCX1010/MAX1310

(Sem 1 TRIGONOMETRY) Designed for students having a two-year background in algebra, including some coordinate geometry, this course provides intensive study of trigonometric functions, fundamental identities, inverse trigonometric functions & applications, trigonometric & polar forms of complex numbers & DeMoivre's Theorem.

(Sem 2 ALGEBRA 3) This course is designed to provide opportunities to strengthen algebraic concepts & skills. Topics included are linear & polynomial equations, sequences & series, matrices & determinants, & real & complex numbers.

Prerequisites: Credit in Algebra 2 with a “C” or better and teacher recommendation. Courses must be taken together.

TRIGONOMETRY & ANALYTIC GEOMETRY

(2 Sem – 0.5 Cr each)

MCX1010/MCX1030

(Sem 1 TRIGONOMETRY) Designed for students having a two-year background in algebra, including some coordinate geometry, this course provides intensive study of trigonometric functions, fundamental identities, inverse trigonometric functions & applications, trigonometric & polar forms of complex numbers & DeMoivre's Theorem.

(Sem 2 ANALYTIC GEOMETRY) Designed for students who have completed courses in Alg. 1, 2, Geometry, & Trig., & who are planning to study Calculus. This rigorous course includes study of rectangular & polar coordinates, curve sketching, conic, algebraic & transcendental functions.

Prerequisites: Credit in Algebra 2x with a B or better and teacher recommendation. Courses must be taken together.

PROBABILITY & STATISTICS

(2 Sem – 0.5 Cr each)

MX1100/MXX1300

(Sem 1 Probability) This course focuses on the probability content standards with emphasis on developing probability concepts inherent in everyday situations experienced in investment, insurance, science, business, and technology. Emphasis is also placed on using probabilities in decision making.

(Sem 2 Statistics) This course provides students with an introduction to statistical issues and concerns and presents strategies for analyzing and interpreting data. This course addresses the statistics content standards and includes the following topics: graphs and charts, collection and organization of data, measures of central tendency and dispersion, uses and misuses of statistics, frequency distributions, correlation, and regression.

Prerequisites: Credit in Algebra 2. Courses must be taken together.

AP CALCULUS (Year - 1 Cr)

MCA1040

AP Calculus is conducted as a college-level course for mathematically able students having strong backgrounds in Algebra, Geometry, Trigonometry & Analytic Geometry. It includes a brief review of functions & analytic geometry with emphasis on limits, differentiation, integration, & applications. Students are required to take the AP Calculus exam (form AB) in May to earn college credit, the extra gpa point, &/or placement. **Prerequisites:** Credit in Analytical Geometry with a “B” or better and teacher recommendation. AP Agreement required. No class drops once enrolled.

New Class!

INTRODUCTION TO COLLEGE MATHEMATICS

(Year - 1 Cr)

MIC1200

The course will focus on topics from the Algebra, Functions, Geometry, and Statistics domains of the Common Core State Standards with an emphasis on mathematical modeling and quantitative reasoning. Students will extend their understanding of high school mathematics concepts and apply that understanding in real-world problem-solving situations and in purely mathematical contexts. This course is for 12th graders who intend to go to college and could benefit from intensive course work that will prepare them for MATH 100, MATH 111 (for elementary education majors), or Introduction to College Statistics at any of the ten University of Hawai'i campuses. In order to qualify for automatic placement in the above math courses, the following requirements must be met: receive a score of 2 or higher on the 11th grade Smarter Balanced Math assessment AND receive a grade of B or better in Introduction to College Math. This course WILL fulfill the 4th year mathematics credit that is required for the Honors Recognition Certificates. **Prerequisites:** Grade 12 only. Successful completion of Algebra 2. Teacher Recommendation.



Students interested in enrolling in Early College

Math 100: Survey of Mathematics

should see or email
Mrs. Kellie Frias in Room N103
for more information.

SCIENCE

In addition to the content standards specific for each science course, all science classes will address the following standards:

1. Science as Inquiry: Demonstrate the skills necessary to engage in scientific inquiry
2. Habits of Mind: Apply the values, attitudes, and commitments characteristic of an inquiring mind. Use concepts and themes such as a system, change, scale, and model to unify the disciplines and help them understand and explain the natural world.
3. Safety: Demonstrate the importance of safety by applying safety skills in all activities.
4. Science and Technology in Society: Use the problem-solving process to address current issues involving human adaptation in the environment.

Three credits of science are required to earn a high school diploma in the State of Hawaii. Biology must be one of the three science credits. Both Academic and STEM Honors Certificates require 4 credits of Science. Students who are planning to attend college should be aware that some courses that give you science credit for high school graduation are not accepted by certain colleges or the NCAA for their science requirements. If you are unsure whether the course you select is acceptable, you should check with your counselor or with the college.

	GRADE 9	GRADE 10	GRADES 11 & 12
General Student	9 th Grade Environmental Science	Biology Y	Physical Science Plants & Animals Earth Science (CSAP only) Marine Science Chemistry Y Botany
College Prep Student	9 th Grade Environmental Science	Biology X	Chemistry Y or X Physics Y or X Human Physiology Botany AP Biology + Biology 2 AP Chemistry + Directed Studies in Science AP Environmental Science AP Physics C
Accelerated Student	Biology Honors	Chemistry X	(See above for College Prep Student track)



(GR 9) ENVIRONMENTAL SCIENCE (Year - 1 Cr) SPH2603D

This is an introductory course with a focus on introducing students to the scientific disciplinary skills required for the later years of secondary science courses. This is a problem or issues-based course where students investigate environmental issues (e.g. watershed, forestry, global warming, introduction of new species to an environment, etc.) and problems of our technological society. Students analyze environmental issues, identify and evaluate alternate solutions, and take appropriate actions to help maintain or improve the quality of our sustainable environment. Emphasis is on the use of laboratory and fieldwork to study the local and global environment. **This section is for 9th graders only.**



(GR 9) BIOLOGY - HONORS (Year - 1 Cr) SLH2203H

This course is limited to 9th graders with stanines 8-9 & is geared towards the college-prep student who has a high interest in science. It will emphasize lab experiments which help develop students' investigative techniques. Students will demonstrate an understanding of the following major topics: biochemistry, cellular biology, reproduction, genetics, evolutions, diversity & ecology. Students will also examine the relationships between the major biological concepts & the human organism. **Recommended for Grade 9. Students must participate in a screening process to be admitted into the class.**

SCIENCE (CONTINUED)

BIOLOGY 1 X (Year – 1 Cr)

SLH2203X

This lab-oriented course is geared towards the college-prep student. It will emphasize lab experiments which help develop students' investigative techniques. Students will demonstrate an understanding of the following major topics: cellular biology, reproduction, genetics, evolution, diversity, & ecology. They will also learn how biology applies to their everyday life. **Recommended for Grades 10-12. Teacher recommendation requested**

(GR 10) BIOLOGY 1 Y (Year - 1 Cr)

SLH2203Y

This course is designed to “build” on the major concepts covered in 9th grade Environmental Science. The 10th grade Biology curriculum spans the “continuum of organization” from subatomic particles to cells; through organisms & their relationship to the environment. Students will be able to demonstrate an awareness of the cell as a basic unit & an understanding for the relationship between structure & function; compare developmental patterns among groups of organisms; demonstrate an understanding that links biological diversity & the theory of genetics to reproduction; & an understanding of environmental changes that result in the production of new species & the extinction of existing species. The course will strive to encourage student thinking & action, using knowledge of biology as a basic tool for approaching a variety of problems.



Do you like plants? Try BOTANY!

BOTANY (Year – 1 Cr)

SLH5503

Want to know how to make your own plants? Ever wondered how tea is made or how certain plants are used? This course may be for you! Plants have played an important role in human societies across the world since the dawn of civilization.

This lab-based introductory course is designed for college-bound students. The emphasis will be on edible plants with a goal of developing your understanding of and appreciation for the plant world. We will cover general plant parts, growth patterns, chemistry, and function and focus on plant organs such as leaves, stems, flowers, fruits, seeds, and roots that we use as food, beverages, medicine, and spices. We will discuss the history of plants dominating agriculture both here in Hawaii and around the world. You will be introduced to the taxonomy of major edible plant families of the world. The future ecological, economic and social implications of our dependency on edible plants will also be discussed in light of current threats to plants and their native habitats. **Pre-requisite: Grade 12 only. Completion of Biology I. Teacher recommendation.**



CHEMISTRY X (Year - 1 Cr)

SPH3503X

This college prep course stresses basic principles of science which are used to explain the structure of matter and the changes it undergoes. Students will demonstrate an understanding that matter is composed of atoms which are unique to each element, analyze properties of matter, and develop an understanding of changes both at the macroscopic and microscopic levels. Lab experiments are an important part of this class. Some of the topics covered are: elements & compounds, chemical formulas and equations, stoichiometry, gas laws, nuclear reactions, the Periodic Table, atomic structure, chemical bonding, chemical kinetics, equilibrium, and acids & bases. **Prerequisite: Completion of Algebra 1 and Geometry with a “B” or better.**

CHEMISTRY Y (Year - 1 Cr)

SPH3503Y

This course is designed for the student who is interested in Chemistry, but does not want the rigor of the math requirement or the pace of the college-prep Chemistry. Students will demonstrate an understanding that matter is composed of atoms, which are unique for each element, and develop an understanding of changes associated with chemical reactions. The course includes the study of elements, compounds, chemical formulas, equations, stoichiometry, energy effects, gas laws, the Periodic Table, atomic structure, and chemical bonding. Lab experiments are also a part of this course.

Prerequisite: Completion of Algebra 1 This class is required for Human Physiology.



HUMAN PHYSIOLOGY 1 (Year - 1 Cr)

SLH7503

The human body, its anatomy, & functions of the various internal systems are studied. This course is designed for college-bound students interested in a health profession degree. Students will demonstrate knowledge of the levels of organization in living things & homeostatic mechanisms in the human body. They will utilize proper note-taking skills, develop dissection skills, conduct quality library researches, & practice problem-solving strategies. Students will acquire teaching skills as they educate peers. **Recommended for Health Academy students. Prerequisites: Gr 11 or 12 only. Successful completion of Chemistry course. Teacher recommendation.**

SCIENCE (CONTINUED)



MARINE SCIENCE (Year - 1 Cr)

SEH2503

Marine Science is the study of the world's oceans. A range of topics (various science disciplines) will be covered including structure of the ocean, chemical & physical oceanography, plate tectonics, waves, tides, currents, & life in the ocean. Students will demonstrate an understanding of the relationship between biotic & abiotic factors in the ocean & will be able to describe how the ocean affects human activities & vice versa. Students will design & conduct scientific research that will culminate in a scientific research paper & presentation. Collaborative skills will be developed in group problem solving activities. **Recommended for grades 11-12.**

PHYSICS X (Year – 1 Cr)

SPH5603X

This college prep course investigates the relationship between matter & energy in terms of operational definitions. Students will be able to explain the effect of forces on matter, demonstrate that everything in the universe obeys the same laws of nature that apply to earth & derive mathematical relationships that verify that the total energy of the universe is constant. Students should be able to apply concepts learned to lab situations & to broader contexts. **Prerequisite: Completion of Trigonometry and teacher recommendation..**

PHYSICS Y (Year - 1 cr)

SPH5603

This course will utilize a 3-stage learning cycle of exploration, concept development, & application to investigate the basic principles of Physics. The course includes the study of mechanics, force & motion, energy changes, heat, wave motion, & electricity. Students will be able to identify physics principles in every day experiences, be able to predict resulting motion when forces are applied, & use lab experiences to determine how to solve problems rather than obtain a specific solution. **Prerequisite: Completion of Algebra 1 and Geometry.**

PHYSICAL SCIENCE (Year – 1 Cr)

SPH2603

This is a lab-oriented course which covers matter & its properties, forces, motion, & energy. Students will develop an awareness of the interdependence of science, mathematics, & technology in everyday activities. Students will also develop decision-making strategies through critical thinking & cooperative learning to become scientifically literate citizens. Students will relate science concepts learned to relevant local, national, & global issues.

Related Club: Environmental Agents of Change



PLANTS & ANIMALS IN HAWAII (Year – 1 Cr)

SLH4103

This is an introductory course on the interdependence of flora and fauna found on Hawaii's land and in ocean environments. Topics covered include identification and classification of local organisms, ecological relationships, adaptation of organisms, conservation, nature of physical environments, and human impact. Emphasis is on the use of the laboratory to study organisms. This course is not considered a college prep course and may not meet certain college entrance requirements. Students are to meet all benchmarks in the Biological Science Content Standards 1-5. **Prerequisite: Completion of Biology I. This course is not an NCAA Approved Core Course.**



AP BIOLOGY (Year - 1 Cr)

SLH8003

This is a college-level course in Biology based on the Adv. Placement Program of the College Entrance Examination Board. Emphasis is on extensive lab experience & further development of underlying principles of biology. Students will gain a thorough understanding of the following major concepts: cell structure & biochemistry, diversity of organisms, continuity in living things, evolutionary change, & ecological relationships. The course is geared towards preparing the student to take the AP Exam in May to earn college credit. It is highly recommended that students successfully complete the Chemistry CHEMS course before taking this course. **Prerequisite: Completion of Biology 1 & Chemistry, teacher recommendation, and concurrent registration in Biology 2 (aka AP Bio Lab). Students must take the AP exam to earn full 5 point credit. AP Agreement required. No class drops once enrolled.**

BIOLOGY 2 (Year – 1 Cr)

SLH2503

This is a second year laboratory course in biology that is taken concurrently with AP Biology. More thorough and intensive study is given to specific areas such the cell, environmental biology, microbiology, structure and function of animals, anatomy and physiology, and growth and development of plants. Students will use current directions and technologies in individual and group investigation: inquiry utilizing controlled experimentation; and critical analysis of supplemental scientific texts and journals. Students are to meet all relevant benchmarks in Biological Science Content Standards 1-5. **Prerequisite: Completion of Biology 1 & Chemistry, teacher recommendation, and concurrent registration in AP Biology.**

SCIENCE (CONTINUED)

AP CHEMISTRY (Year – 1 Cr)

SPH5003

This is a college-level course in Chemistry based on the Advanced Placement (AP) Program of the College Entrance Examination Board (<http://www.collegeboard.org/>). Emphasis is on extensive lab experience and further development of underlying principles of chemistry. Students will gain a thorough understanding of the following major concepts: the chemical elements are fundamental building blocks of matter, and all matter can be understood in terms of arrangement of atoms; chemical and physical properties of materials can be explained by the structure and arrangement of atoms, ions, or molecules and the forces between them; changes in matter involve the rearrangement and/or reorganization of atoms and/or the transfer of electrons; rates of chemical reactions are determined by details of the molecular collisions; the laws of thermodynamics describe the essential role of energy and explain and predict the direction of changes in matter; any bond or intermolecular attraction that can be formed can be broken, these two processes are in dynamic competition, sensitive to initial conditions and external perturbations. This course is geared towards preparing the student to take the AP Exam in May to earn college credit. It is highly recommended that students successfully complete Chemistry X, Biology 1 X, or AP Biology before taking this course. **Prerequisite: Teacher recommendation required and Dir Studies SAH3503 (aka AP Chem Lab) must be taken concurrently with this course. Students must take the AP exam to earn full 5 point credit. AP Agreement required. No class drops once enrolled.**

DIRECTED STUDIES IN SCIENCE (Year – 1 Cr) SAH3503

This is a second year laboratory course in chemistry that must be taken concurrently with AP Chemistry. More thorough and intensive study is given to specific areas such as spectroscopy, spectrophotometry, gravimetric analysis, titration, chromatography, bonding in solids, stoichiometry, redox titration, physical & chemical changes, kinetics, calorimetry, equilibrium, acid–base titration, and buffering. Student will use current directions and technologies in individual and group investigation: guided–inquiry utilizing controlled experimentation. Students are to meet all relevant HCPSIII Benchmarks in Chemistry Content Standards 1–8. **Prerequisites: Teacher recommendation required and AP Chemistry must be taken concurrently with this course.**



Related Activity: Science Fair

AP ENVIRONMENTAL SCIENCE (Year – 1 Cr) SIH3903

This is a college-level course in Environmental Science based on the Adv. Placement Program of the College Entrance Examination Board. The goal of this course is to provide students with the scientific principles, concepts, and methodologies required to understand the interrelationships of the natural world, to identify and analyze both natural and human-induced environmental problems, to evaluate the relative risks associated with these problems, and to examine alternative solutions for resolving and/or preventing them. Environmental Science is interdisciplinary: it embraces a wide variety of topics from different areas of study. **Prerequisite: Completion of Biology I and Chemistry. Teacher recommendation requested. Students must take the AP exam to earn full 5 point credit. AP Agreement required. No class drops once enrolled.**

STEM CAPSTONE (Year – 1 Cr)

XAT1000

This elective course is self-directed, project-based, and is meant to be a graduation requirement course for a STEM Certificate. Students will apply the skills and knowledge gathered through completion of the STEM program in a culminating project. Students should develop professional and ethical methods of problem solving for the 21st century workplace. These methods should be refined through further enhancement of the research, analysis, teamwork, and project management skills that they have previously attained in the STEM program. Students are expected to demonstrate skilled or masterful levels for all STEM competencies as they address the following major outcomes for the course:

1. Research: Conduct research to reflect upon and determine a project to address a specific community need.
2. Design: Design, build, test, refine, and deliver a solution to address the need.
3. Reflection: Engage in ongoing reflection throughout all levels of the project design and its impacts on the local and global community.
4. Technology: Learn to use technologies with the aid of online self-guided tutorials, student mentoring, and/or professional assistance arranged by the course facilitator. Accessible technology may include, but is not limited to; probeware, biotechnology, bio-agricultural systems, computer-aided design, 3-D modeling, architectural design, animation, games design, surveying and mapping (GPS), Geographic Information Systems, programming, database applications, web page design, digital photo and video editing.
5. Career Skills: Acquire career-building skills. Skills include reflection on and integration of personal values with career interests, strategic resume development, and enhancing job search capability. **Prerequisite: Teacher recommendation required. Course requires independent study. Meets once a week during STARS.**

SOCIAL STUDIES

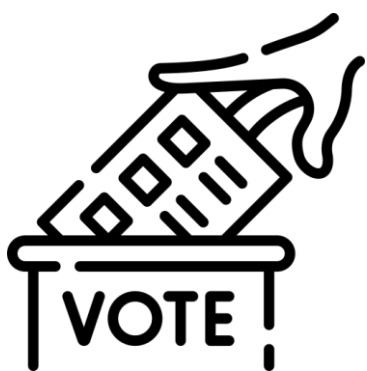
Social studies department courses are organized into "clusters" and with the implementation of the Hawaii Content and Performance Standards III (HCPS III), all students are ensured to receive proper instruction. To better prepare students for the challenges of college, career, and civic life, the C3 (Career, College, and Civic Life) Framework for Social Studies State Standards and its relationship with the Common Core State Standards for ELA/Literacy, are implemented. Four credits of social studies are required to earn a high school diploma in the State of Hawaii.

MODERN HISTORY OF HAWAII (Sem – 0.5 Cr) CHR1100

This course examines the technological and multi-cultural development of modern Hawaii and how the decisions of the past account for and impact present circumstances. This course examines contemporary Hawaii, engages students in in-depth historical inquiry focusing on the historic, geographic, socio-political, and economic structures in the context of the complex interactions and interrelationships that have shaped and continue to influence major decisions facing Hawaii. Students will use the tools and methods of social scientists to conduct their inquiry and study. **Offered in Grade 9 Paired with Participation in Democracy.**

PARTICIPATION IN DEMOCRACY (Sem – 0.5 Cr) CGU1100

This course provides opportunities for students to actively engage in civic discourse and participation. It engages students in the examination of government, political activity, contemporary issues, decision-making and the democratic process. This course focuses on the principles, values and ideals of American constitutional government, global interactions and interconnections, and issues and roles of American citizens. Students are expected to take an active role as citizens and use the tools and methods of social scientists in their inquiry. **Offered in Grade 9. Paired with Modern History of Hawaii.**



U.S. HISTORY & GOVERNMENT (Year - 1 Cr) CHU1100

U.S. HISTORY & GOVERNMENT – Honors (Year - 1 Cr) CHU1100H

This course examines the development of the United States through historical concepts of change, continuity, and causality; through civics concepts of governance, democracy, conflict, and cooperation; through geographical and anthropological concepts of diversity and unity of human/cultural systems; and through the economic concepts of interdependence, limited resources, and functions of markets. It requires students to judge the past on its own terms, not by present day or current standards, to understand people in the context of their times, and to understand that standards and ideas are constantly changing. This course allows students to examine key ideas, events, people, and movements in the United States, assisting them in developing their own personal, national, and world views necessary to make informed decisions. Students will use the tools and methodologies of the appropriate social scientists to conduct their inquiries. **Offered in Grade 10.**

WORLD HISTORY & CULTURE (Year – 1 Cr) CHW1100

This course examines the development and dynamics of human experience through such themes as migration, imperialism, trade, exchanges, and transfers. This course provides a foundation and a rationale for active participation in our global community. It examines diverse perspectives, encourages diverse interpretations and historical empathy, and explores global conflict and cooperation. This course engages students in historical inquiry focusing on the historic, technologic, socio-political, geographic, and economic development of past and contemporary civilizations. Students examine decisions, events, and ideas of the past to make informed judgments on contemporary issues, decisions, and events. **Offered in Grade 11.**



SOCIAL STUDIES (CONTINUED)

SENIOR SOCIAL STUDIES ELECTIVES

Senior Social Studies classes are paired to be most beneficial to each academy.

Seniors are welcome to take additional social studies electives of interest but those additional classes will not replace the academy paired courses.

BUSINESS & NATURAL RESOURCES:

GEOGRAPHY (Sem – 0.5 Cr) CSD2100

This course is a synthesis of the geographical concepts of spatial terms, places and regions, physical and human systems, and the environment. Students examine past and present societies using the tools and methodologies of the geographer to develop and evaluate ecosystems, human patterns, and consequences of human activities on the earth. Students are actively engaged in stewardship activities.

PACIFIC ISLAND CULTURES (Sem – 0.5 cr.) CER2300

This course examines the cultural systems of the Pacific Islands, with a focus on analysis of cultural beliefs, practices, cultural assimilation, and preservation. It also examines the political, economic, and social factors that impact settlement and the ecosystems of the Pacific region. It actively engages students in multicultural problem-solving and decision-making activities and uses the methodology of anthropologists to investigate issues.

CONSTRUCTION & ENGINEERING:

AMERICAN PROBLEMS (Sem - 0.5 Cr) CGU2200

In this course, students use the tools and methodology of the political scientist, the economist, and the sociologist or anthropologist to investigate current social, political, and economic issues in contemporary America. Emphasis on contemporary Hawaiian topics.

ECONOMICS (Sem - 0.5 Cr) CSD2500

This course synthesizes the economic concepts of choice and opportunity costs, markets, interdependence, and government roles. It engages students in gathering and interpreting data to analyze economic changes and impacts on groups and individuals. It empowers students to make and evaluate personal economic decisions.



HEALTH & HUMAN SERVICES:

PSYCHOLOGY (Sem – 0.5 Cr) CSD2200

This course helps students to understand the physiological and psychological basis for human behavior. Students explore the differences between theory and facts that cannot be proven scientifically, in the context of human behavior. This course also focuses on examining research methods in psychology, exploring different learning theories, and understanding aspects of behavior disorders.

SOCIOLOGY (Sem – 0.5 Cr) CSD2300

This course emphasizes inquiry using sociological methodologies and practices. Students will analyze issues of cultural assimilation from sociological perspectives of diverse ethnic and racial groups. It is designed to focus on the understanding of relationships among cultures, cultural change, and social institutions and conditions.



AP U.S. HISTORY (Year – 1 cr) CHA6100

This course focuses on exploration and settlement of the New World, colonial society and the Revolution, the establishment of the Constitution and the New Republic, nationalism and economic expansion, sectionalism, the Civil War and Reconstruction, and industrialization. The second semester's emphasis is on the 19th-20th Century intellectual and cultural movements, national politics, foreign policy, and the post-war period under Eisenhower, Kennedy, Johnson, Nixon, and Reagan. Emphasis is on analysis and interpretation of primary sources, which includes the use of documentary material, maps, statistical tables, and pictures to write analytical papers. This course is intended for students working to complete studies equivalent to a college introductory course in this field. **Open to all students in grades 11 and 12. Please see your counselor prior to registering for this course. All students that take an AP class are required to purchase and take the AP exam to receive the AP credit on their transcript. The AP Agreement is required. No class drops allowed once enrolled.**

WORLD LANGUAGES



HAWAIIAN



HAWAIIAN 1 (Year – 1 Cr)

WPH1000

This course begins with simple greetings, courtesy expressions and classroom expressions. Students learn through guided practice, pairings and group collaborations and will present what they learn on a variety of topics such as family, everyday life and self. Students will learn how to understand, speak, read and write the Hawaiian language and at the same time be immersed in the values and customs of the Hawaiian people.

HAWAIIAN 3 (Year – 1 Cr)

WPH3000

This course is a continuation of Level 2 and includes topics such as career skills, community interaction, currency, etc. Students will strengthen their speaking, writing and understanding of the Hawaiian language through visits to Hawaiian immersion schools in the community. **Prerequisites: Successful completion of Level 2 with a “C” or and teacher recommendation.**

HAWAIIAN 2 (Year – 1 Cr)

WPH2000

This course is a continuation of Level 1. Students will continue to build and enhance their Hawaiian language skills through the use of comparisons in order to understand the similarities and differences of the language with other languages. Students learn to communicate (orally/written) using memorized sentence patterns and practice their skills through hands on learning activities and games like the Makahiki. Students will participate in a Makahiki tournament between other classes this year. **Prerequisites: Successful completion of Level 1 with a “C” or better and teacher recommendation.**

HAWAIIAN 4 (Year – 1 Cr)

WPH4000

This course is a continuation of Level 3 and includes topics such as travel, food, future goals, etc. Students will enhance their level of understanding and communication with the Hawaiian language while visiting Hawaiian immersion schools and Hawaiian based environments in the community. **Prerequisites: Successful completion of Level 3 with a “C” or better and teacher recommendation.**

Related Classes: Hawaiian Dance (See Fine Arts Section)



Related Clubs: Na Liko Lehua O Hilo Hanakahi & Hawaiian Club



SPANISH



SPANISH 1 (Year – 1 Cr)

WES1000

This introductory course uses "Speed Spanish" to teach students basic strategies and simple words and phrases. New vocabulary and memorized parts will enable students to produce simple conversations with the use of flashcards.

SPANISH 3 (Year – 1 Cr)

WES3000

Spanish 3 begins with a review of the preterite and imperfect past tenses. The study of grammar intensifies with the comparison of the preterite and the imperfect, and the introduction of the future and conditional tenses which are required in order to understand different genre of authentic literature. The challenge is to incorporate these new grammatical structures in reading, writing and speaking. **Prerequisites: Successful completion of Level 2 with a “C” or better and teacher recommendation.**

SPANISH 2 (Year – 1 Cr)

WES2000

Spanish II introduces the elements of folktales and legends. Students will use Cornell Notes to analyze literary pieces and write short reflections in Spanish. Graphic organizers will be used to compare and contrast different stories. **Prerequisites: Successful completion of Level 1 with a “C” or better and teacher recommendation.**

SPANISH 4 (Year – 1 Cr)

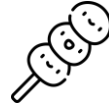
WES4000

The study of familiar and polite commands and the subjunctive mood dominate the fourth year of language. Literature includes different genre and adaptations of original works. Students will create short compositions or original poems. **Prerequisites: Successful completion of Level 3 with a “C” or better and teacher recommendation.**

WORLD LANGUAGES (CONTINUED)



JAPANESE



JAPANESE 1 (Year – 1 Cr)

WAJ1000

Students will practice how to communicate and present on very familiar topics using a variety of words and phrases that they have practiced and memorized. Hiragana and Katakana letters will be introduced and practiced, and students will read and write learned or memorized words and phrases in Hiragana and Katakana.

JAPANESE 2 (Year – 1 Cr)

WAJ2000

Students will practice how to communicate and exchange information about familiar topics using phrases and simple sentences, sometimes supported by memorized language. Students will practice asking and answering simple questions to handle short social interactions in everyday situations, reading and understanding familiar words, phrases, and sentences within short and simple texts, and writing short messages and notes on familiar topics related to everyday life using Hiragana, Katakana and minimum Kanji letters. **Prerequisites: Successful completion of Japanese 1 with a "C" or better and teacher recommendation.**

JAPANESE 3 (Year – 1 Cr)

WAJ3000

Students will practice how to participate in conversations on a number of familiar topics using simple sentences. Students will practice asking and answering simple questions to handle short social interactions in everyday situations, reading and understanding the main idea of short and simple texts when the topic is familiar, and writing briefly about most familiar topics using a series of simple sentences in Hiragana, Katakana and a variety of Kanji letters. **Prerequisites: Successful completion of Japanese 2 with a "C" or better and teacher recommendation.**

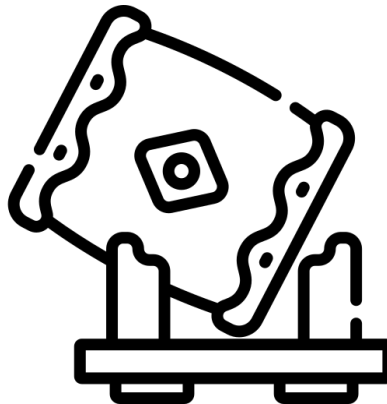
JAPANESE 4 (Year – 1 Cr)

WAJ4000

Students will practice how to participate in conversations on familiar topics using sentences and series of sentences. Students will practice asking and answering a variety of questions to handle short social interactions in everyday situations and be able to say what they want to say about themselves and everyday lives, reading and understanding the main idea of texts related to everyday life and personal interests, and writing on a wide variety of familiar topics using connected sentences in Hiragana, Katakana and various Kanji letters. **Prerequisites: Successful completion of Japanese 3 with a "C" or better and teacher recommendation.**

Related Clubs: Japan Club & Taiko Club

Related Activity: Japan Wizard



MULTIDISCIPLINARY / GUIDANCE

LEADERSHIP TRAINING: SA (2 Sem – 0.5 Cr ea)

XLP10151/XLP10152

This is a multidisciplinary course designed to help students develop communication, group process, and facilitative leadership skills and knowledge of parliamentary procedure. Student leaders develop and apply techniques of leading, planning, organizing, conducting, and evaluating, including problem solving and critical thinking. Students will not only learn leadership skills, but will also have the opportunity to apply the knowledge gained in the course to plan and coordinate various class and committee projects. This course may be repeated for elective credit. **STUDENT ACTIVITIES COORDINATOR APPROVAL REQUIRED.**

TRANSITION TO HIGH SCHOOL (Sem – 0.5 Cr)

TGG1103

This course is designed to assist 9th grade students' transition into the high school setting. It develops study habits, employability skills, self-image and basics skills of reading, writing, computer literacy and the general learner outcomes. The course guides students in the establishing of a student portfolio designed to highlight the student's accomplishments throughout their high school career. **For Grade 9 only. Scheduled with PE Lifetime Fitness**

SCHOOL SERVICE (Sem – NO CREDIT)

XTH40011 / XTH40012

Students are given the opportunity to provide service to other students & the school and are based in the counseling department. There is NO credit for this course. **GRADE 12 ONLY. COUNSELOR APPROVAL REQUIRED.**

AVID (Advancement Via Individual Determination) Program (Year - 1 Cr) (Scheduled as COLLEGE PREP SKILLS)

GRADE 10

TGG8100

GRADE 11

TGG8110

GRADE 12

TGG8120

Course focuses on AVID (Advancement Via Individual Determination) Program. This course is designed to assist students with college readiness course work with the emphasis on analytical writing, preparation for college entrance and placement exams, study skills and test taking note-taking and research. AVID strategies (WICOR) will be incorporated in the AVID class. Hilo High School is an accredited AVID site. **Prerequisites: Teacher recommendation, application/interview required. See AVID Site Coordinator for more information.**

AVID TUTOR (Year – 1 Cr)

TGG1011YT

Tutors will take an active part in developing the academic and personal strength of AVID students, who have made a commitment to become actively involved in their own education. Tutors become masters of reassurance and the AVID strategies. Tutors are expected to lead, assist in the writing process, discuss common areas of concern, and assist the coordinator in other duties assigned. Hilo High is an accredited AVID site. The AVID tutor class is a repeatable class. **Prerequisites: Grade 11 & 12 only. AVID Teacher/Site Coordinator recommendation, tutor application and interview required. See AVID Site Coordinator for information.**



YEARBOOK

YEARBOOK 1 (Year - 1 Cr)

XYY8610

YEARBOOK 2 (Year - 1 Cr)

XYY8630

YEARBOOK 3 (Year - 1 Cr)

XYY8650

YEARBOOK 4 (Year - 1 Cr)

XYY8660

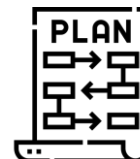
The yearbook course has been designed to provide students with the journalism skills and the ability to apply those skills to the actual production of the yearbook. Units of study include teamwork, responsibility, brainstorming, content, coverage, concept, reporting, writing, headlines, captions, editing, photography, typography, design, graphics, finances, yearbook campaigns, advertising and distribution. Actual work results in the current volume of the school's yearbook. The publication strives to maintain a tradition of excellence in which the school and the community can take pride. **Prerequisite: Yearbook teacher approval for Yearbook 2, 3, & 4.**

SPECIAL EDUCATION

The Special Education Department offers modified courses which fulfill the graduation requirements to eligible students. Course work allows for individual ability levels & follows prescribed individual educational plans.

The following modified resource courses are offered by the Special Education Department for Special Education students attempting to earn a DIPLOMA. For a more detailed description of the courses, see the course description by the subject department.

ENGLISH 1 (S) (Year - 1 Cr)	LCY1010S
ENGLISH 2 (S) (Year - 1 Cr)	LCY2010S
ENGLISH 3 (S) (Year - 1 Cr)	LCY3010S
ENGLISH 4 (S) (Year - 1 Cr)	LCY4010S



MOD HIST HI (S)/ PARTICIPATION IN DEMOCRACY (S) (2 Sem – 0.5 Cr each)	CHR1100S/ CGU1100S
W HIST & CULT (S) (Year - 1 Cr)	CHW1100S
US HIST & GOVT (S) (Year - 1 Cr)	CHU1100S
GLOBAL STUDIES / GEOGRAPHY (S) (2 Sem - 0.5 Cr each)	CGW2400S/ CSD2100S

CAREER & LIFE PLANNING (S) (Sem – 0.5 Cr) TGG1100S

This course is required for all 11th grade Special Education students who have not completed their Personal Transition Plan (PTP) prior to the start of their junior year. Career & Life Planning will focus on transition from high school to college, work, or the military and assist students to complete their PTP. An additional half credit course should be chosen to go with this course.

MODELING OUR WORLD I (S) (Year - 1 Cr)	MAX1080S
ALGEBRA 1 (S) (Year - 1 Cr)	MAX1100S
GEOMETRY (S) (Year - 1 Cr)	MGX1100S
MODELING OUR WORLD II (S) (Year - 1 Cr)	MAX1180S
MATH WORKSHOP 9 (Sem – 0.5 Cr each)	MSW10091S / MSW10092S

CERTIFICATE OF COMPLETION

The Certificate of Completion of an Individually Prescribed Program (IPP) shall be issued to a student with a disability who completes all the requirements set by the student's Individualized Education Program (IEP).

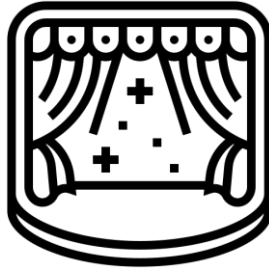
Math Workshop course will be required for all Special Education students who do not meet a given criteria and whose IEP Least Restrictive Environment (LRE) statement includes Math (S).

The Special Education Department offers modified courses for students attempting to earn a Certificate of Completion of an Individually Prescribed Program (IPP).

ENVIRONMENTAL SCIENCE (S) (Year – 1 Cr)	SIH3603S
PHYSICAL SCIENCE (S) (Year - 1 Cr)	SPH2603S
BIOLOGY Y (S) (Year - 1 Cr)	SLH2003S
PLANTS & ANIMALS OF HAWAII (S) (Year - 1 Cr)	SLH4103S

All special program students will be registered for courses by their case manager/teacher. These programs include: SCIL, IPP, CBI-work, & CBI-severe.





PERFORMING ARTS LEARNING CENTER (PALC)

The Performing Arts Learning Center, in operation since 1987, is a theatre arts program open to all students in grades 9-12. New students entering the program must audition or interview at the PALC registration sessions offered at the start of each semester. Returning students may register for courses in advance, but should check with the PALC Coordinator to insure they are following the proper course sequence. **All PALC courses meet after school and on some weekends.** Students must have their own transportation to and from all activities. The PALC program is recognized as a Center of Excellence by the Department of Education.

PLAY PRODUCTION 1A/1B (2 Sem – 0.5 Cr each)

FTP1100L/1200L

In this course, students will learn about the various aspects of performing a play for an audience through developing skills in acting, singing, and dancing. Understanding the basic principles of play production and theatre is achieved through active participation in public performances.

PLAY PRODUCTION 2A/2B (2 Sem – 0.5 Cr each)

FTP2100L/2200L

This course is designed to provide students who have completed Play Production 1 with opportunities to assume directorial responsibilities in producing a play for an audience and participate in various aspects of theatre arts, including production, promotion, and critiquing activities. Students develop leadership skills and perform production duties beyond the scheduled rehearsal times.

PLAY PRODUCTION 3A/3B (2 Sem – 0.5 Cr each)

FTP3100L/3200L

This course is designed to provide students who have completed Play Production 2 with opportunities to further develop leadership skills and perform production duties at a more in-depth level.

PLAY PRODUCTION 4A/4B (2 Sem – 0.5 Cr each)

FTP4100L/4200L

This course is designed to provide students who have completed Play Production 3 with opportunities to assume central responsibilities in producing a play for an audience. Students demonstrate leadership skills and perform production duties through intensive participation in program activities as well as involvement in community and university projects.



THEATER CRAFT 1A/1B (2 Sem – 0.5 Cr each)

FTC1100L/1200L

This is an introductory course covering the study of design and production of sets, costumes, props, and other technical elements of the performing arts. Students experience theatre productions through hands-on support of plays.

THEATER CRAFT 2A/2B (2 Sem – 0.5 Cr each)

FTC2100L/2200L

This is an intermediate course in techniques of production design and stage construction. Students work closely with the technical designer and stage manager to learn about creative effects, types of stage design, and the use of lighting and sound. Students directly apply knowledge to plays and projects, and apprentice leadership roles in running a show.



Planning to play sports in college?

You can work hard to earn athletic scholarships if you are motivated to do it.
Here are some tips to help you be prepared:

Grade	To Do	Resources
9	<p>Take your academics seriously! You will need to pass all your core classes (English, Social Studies, Science, Math, and World Language) with at least a C to be eligible to play sports at the college level but with less than a 3.0, you might not even get into college! Think Scholar-Athlete!</p>	You, your teachers, your counselors
10	<p>Continue to take your academics seriously!</p> <p>Sign up for/take the PSAT If you qualify for free/reduced lunch, you also qualify for fee waivers for the PSAT/SAT/ACT. If you haven't applied for free/reduced lunch and you qualify, then go on and do that application now!</p>	<p>You, your teachers, your counselors</p> <p>Listen for announcements and sign up with the test coordinator</p>
11	<p>Continue to take your academics seriously!</p> <p>Sign up for/take the PSAT again. Sign up for/take the SAT and ACT If you qualify for free/reduced lunch, you also qualify for fee waivers for the PSAT/SAT/ACT. If you haven't applied for free/reduced lunch and you qualify, then go on and do that application now!</p> <p>Do your college research - where do you want to apply? Sign up for college visitation presentations. Go to college & career fairs. Some schools offer application fee waivers if you go to their presentation. YES, you have to pay to apply to schools!</p> <p>Create your online eligibility account(s) for NCAA and/or NAIA If you qualify for free/reduced lunch, you also qualify for fee waivers for NCAA and/or NAIA. If you haven't applied for free/reduced lunch and you qualify, then go on and do that application now!</p>	<p>You, your teachers, your counselors</p> <p>Listen for announcements and sign up with the test coordinator</p> <p>https://collegereadiness.collegeboard.org/sat</p> <p>https://www.act.org</p> <p>https://collegesearch.collegeboard.org/home</p> <p>https://web3.ncaa.org/ecwr3/</p> <p>https://play.mynaia.org</p>
12	<p>Be sure to take a 4th year of Math and 4th year of Science. Eligibility is based on core subject classes and you will need 16 credits to play!</p> <p>Continue to update your NCAA and/or NAIA account to reflect any changes</p> <p>Make final decisions about college applications, and meet your application deadlines!</p>	See Mrs. Frias - College/Career Counselor

Student Name: _____

CLASS OF _____

REGISTRATION CHECKLIST

FRESHMAN	CREDITS EARNED	SOPHOMORE	CREDITS EARNED
English 1	_____	English 2	_____
Modern History of Hawaii	_____	U. S. History & Government	_____
Participation in Democracy	_____	Math	_____
Math	_____	Science	_____
Science	_____	PE	_____
PE	_____	Health	_____
Trans to High School	_____	Specified CTE POS	_____
Elective	_____	Elective	_____
Elective	_____		<i>CREDIT TOTAL</i>
	<i>CREDIT TOTAL</i>		_____

JUNIOR	CREDITS EARNED	SENIOR	CREDITS EARNED
English 3	_____	English 4	_____
World History & Culture	_____	Social Studies Elective	_____
Math	_____	Social Studies Elective	_____
Science	_____	Specified CTE POS	_____
Specified CTE POS	_____	Electives	_____
Electives:	_____		_____
	_____		_____
Personal Transition Plan (PTP)	_____		
	<i>CREDIT TOTAL</i>		<i>CREDIT TOTAL</i>
	_____		_____

REGISTRATION WORKSHEET

	ACCN #	COURSE TITLE
English	_____	_____
Social Studies	_____	_____
	_____	_____
Soc. St. Alternate	_____	_____
	_____	_____
Other Required Courses		
	_____	_____
	_____	_____
	_____	_____
	_____	_____
Electives	_____	_____
	_____	_____

	ACCN #	COURSE TITLE
Electives (cont.)	_____	_____
	_____	_____
	_____	_____
	_____	_____
Alternates for Electives (List in order of preference):		
1.	_____	_____
2.	_____	_____
3.	_____	_____
4.	_____	_____
After School	_____	_____