

General Information

The children enrolled are provided with supervised daily activities that are age appropriate. Group ratios are approximately 20-1. This is a totally self-supportive program, receiving no monies from the city, district, county, state or federal agencies. All fees for student participation in the program **must be paid in advance** prior to the child's attendance. Extended Day Enrichment is designed to provide a safe, nurturing, positive environment that enlists age appropriate programs and activities to enhance and enrich the experiences within our student's day. Such activities include arts & crafts, homework, recess, and sports. Space is available on a limited basis. Contracted activities requiring additional fees are also available to enrich your child's afternoon.

Program Hours

Before School Care

6:30 am - 8:00 am

Make sure to arrive before 7:45 am.

Doors will be locked at 7:45 am every morning and no one will be admitted.

After School Care

Dismissal - 6:00 pm

* School dismisses at 2:50 pm on Mon, Tues, Thurs, & Fri and at 1:50 pm on Weds

We are closed for all school holidays, breaks, and teacher planning days.

Late fees begin at 6:05 pm with a charge of \$5.00 and \$1.00 per each additional minute after 6:05 pm.

Snack & Drink included with all after school plans
Plans listed below are cost per month.

****Certain months will be pro-rated down due to extended holidays.****

Before School Care Only

1 Child	\$ 170.00
2 Children	\$ 255.00
3 Children	\$ 340.00

After School Care Only

1 Child	\$220.00
2 Children	\$330.00
3 Children	\$440.00

Both Before & After School Care

1 Child	\$285.00
2 Children	\$427.50
3 Children	\$570.00

Wednesday Only

1 Child	\$ 55.00
2 Children	\$110.00
3 Children	\$165.00

Durbin Creek Elementary Extended Day Enrichment Program



"Encouraging Growth While Making the Most of Our Enrichment Time"

Durbin Creek Elementary
4100 Racetrack Road
Jacksonville, FL 32259

Web Site:

www-dce.stjohns.k12.fl.us

Hayley Pollinger-Van Horne
Extended Day Coordinator
904-547-3882
904-547-3885 Fax
pollinh@stjohns.k12.fl.us

General Information

The Extended Day Enrichment Program at Durbin Creek Elementary School is a community service provided by the St. Johns County School District to families who have two working parents or families of single parents who work. It is available to students enrolled at Durbin Creek in grades Kindergarten to Fifth.

Extended Day Enrichment Fees

Enrichment fees are collected for the months of August through June. Extended Day enrichment fees are calculated on a 20 day per month rate, and will be pro-rated for certain months. Enrichment fees are paid on a monthly basis. If payment is not received, your child will be dropped from the program until the balance is paid in full.

Please make checks payable to: **Durbin Creek Elementary** or **DCE**

Registration Fees & Information

New enrollments as well as Re-enrollments are required to pay a **non-refundable** registration fee of \$70.00, regardless of the program in which the child is enrolled. This is a **once a year** fee and helps provide materials necessary for activities within the Enrichment Program. This fee is not refundable if the parent decides not to enroll his/her child after payment of this fee.

The parent may enroll, withdraw & re-enroll their child/ren in the program throughout the year without repayment of the registration fee. However, space is limited. Although we will be glad to give you our best guess, there are no guarantees that there will still be room for your child should you need to re-enroll.

Family Assistance Programs

Extended Day enrichment fees to families who qualify for Free or Reduced lunch are offered at reduced rates. For more information about discounted rates or how to apply for Free or Reduced rate, please contact the Extended Day office.

NSF Checks

Checks returned NSF for any reason will be subject to processing fees from Check Redi who handles all returned checks.

Two Weeks Notice

Should your needs change and you need to reduce or discontinue services through our program, we require **2 weeks notice** in writing. If you child/ren

Weekly Activities

Daily Recess & Snack



The children alternate using the playgrounds, basketball courts, softball fields, soccer fields, their assigned houses, and the cafeteria on a daily basis. Teachers always have access to direct communication with staff members on the premises via walkie talkie.

Homework



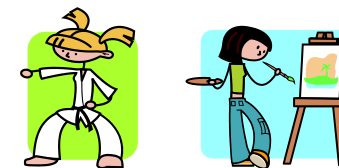
Do to cost restraints, we will no longer have a homework room. Each group will have a time designated for the completion of homework. Their Extended Day teacher will try their best to help children with directions and questions, however, **we do NOT have adequate staff for one-on-one attention**. If you think your child needs more attention I recommend looking into a tutoring program.

Arts & Crafts



In addition to the arts and crafts completed within your child's group, we offer an Art & Crafts room on Fridays. The projects completed within the room range from cut & paste paper manipulation to in depth baking projects. Space is limited, so not every child will get to participate every week.

Contracted Activities



Each child in After School Care has the opportunity to enroll in contracted activities for an additional cost. Prices vary based on activity. They are offered to enable the children of working parents the opportunity and exposure that late hours sometimes prohibit. They are meant to enhance your child's experiences and promote a higher self-esteem and sense of accomplishment.

When do they begin?

Most activities do not begin until September.

When do we register?

Most activities run on 6 to 8 week long sessions and will have

registration forms at the Ext Day checkout.