

# 6 - Blue Belt

Pitches: GABC'D'

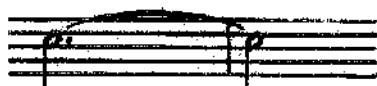
## Lightly Row

*Folk song*

Light-ly row, light-ly row, o'er the ahin ing waves we go: Smooth ly glide, smooth ly glide,  
 on the si - lent tide. Let the winds and wa - ters be Min - gled with our  
 me - lo - dy Sing and float, sing and float. in our lit - tle boat.

### New things to learn for the Blue Belt song:

A tie is a curved line which connects notes of the same pitch.  
 Only the first note is played and then it is held for the total value of the connected notes.



1 2 3 - 1 2



1 2 3 4 - 1

new rhythm: whole note = 4 beats

new notes:

C'

D'