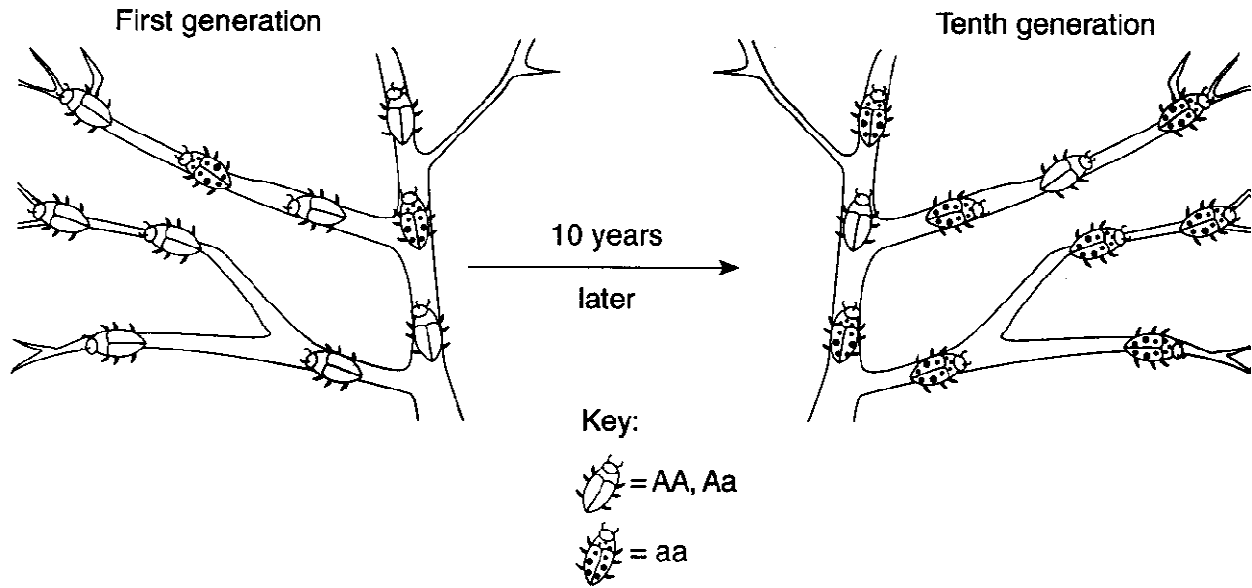


Biology 2

The diagram below illustrates the change that occurred in the frequency of phenotypes in an insect population over 10 generations.



A probable explanation for this change would be that over time there was

- 1 a decrease in the adaptive value of gene *a*
- 2 an increase in the adaptive value of gene *a*
- 3 an increase in the population of this insect
- 4 a decrease in the mutation rate of gene *A*