


# The Baroque Era



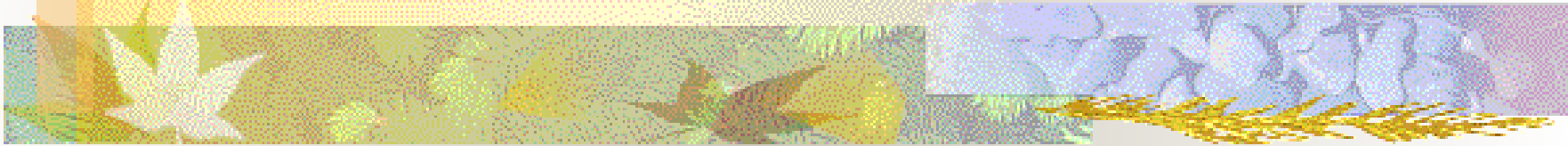
1600-1750



# What was going on in the world?

- 1607 - English settle Jamestown
- 1610 - Galileo confirms the Earth is round
- 1687 - Sir Isaac Newton discovers gravity
- 1732- George Washington born

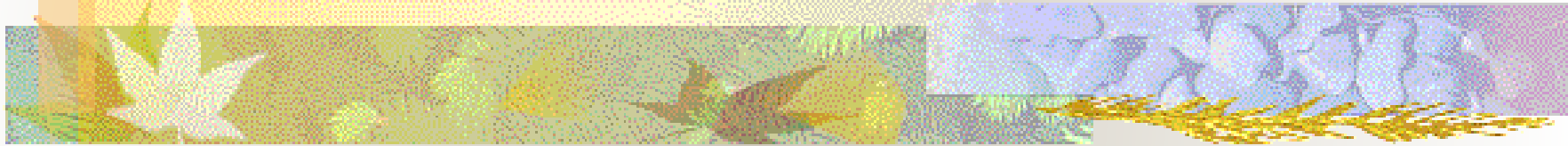
# Famous Baroque Artists





Diego Velasquez


# What does the word Baroque mean?



Baroque is a French word from Portuguese origins that means an **irregularly shaped pearl**.







The term Baroque was originally used for the art works created during this period. They were “strange” and “extravagant”.



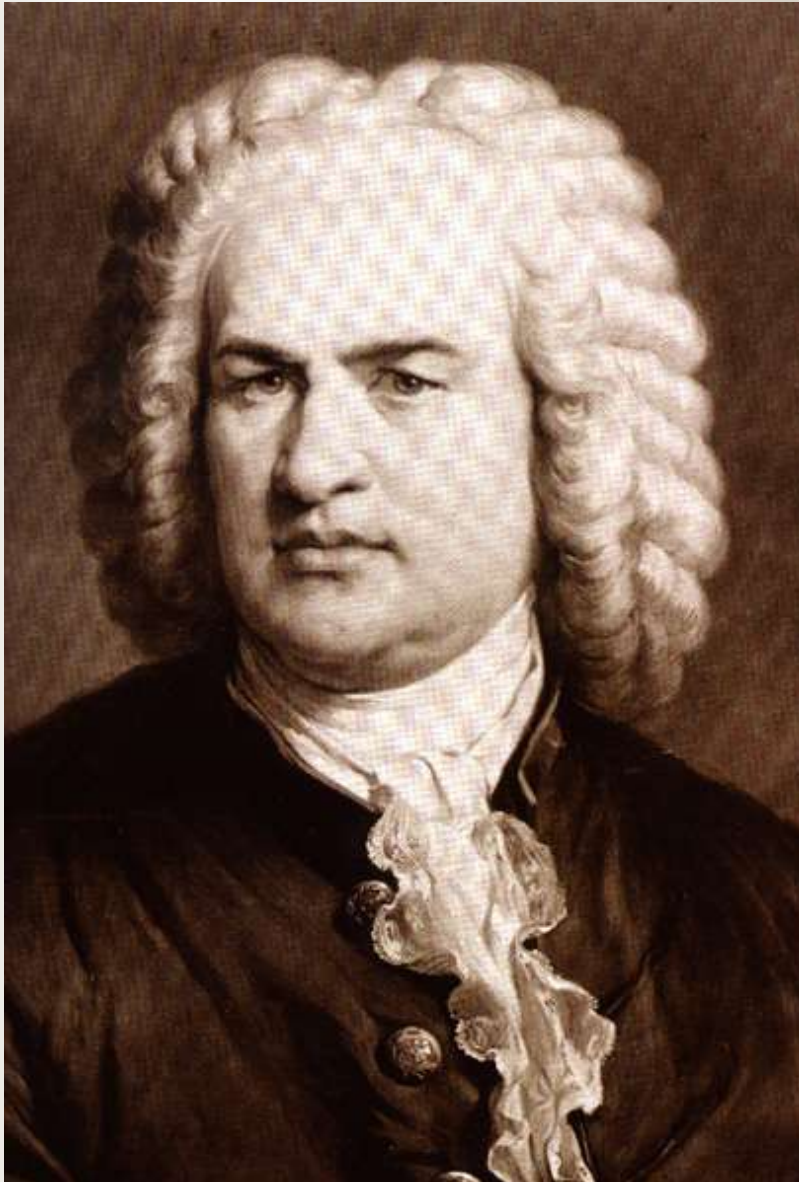
# Characteristics of Baroque Music

- Use of a **Basso Continuo** – “continuous bass” harpsichord and cello providing the bass of the composition.
- **Improvisation** is used within the melodies.
  - “Making it up as you go along”
- If you hear a harpsichord, it’s almost always Baroque.



# Baroque Composers





Johann  
Sebastian Bach  
1685-1750

Tocatta and  
Fugue in d minor





George Frederic Handel  
1685-1759

The Messiah

-The Hallelujah Chorus  
- (the last movement of the  
-piece)

# Johann Pachelbel 1653-1706



- German
- Most well known for his canons – specifically **Canon in D**



Copyrighted Material

## Pachelbel Canon

for Any 2 or 3 Melody Instruments and Bass Instrument

JOHANN PACHELBEL (1653-1706)

Arranged by Daniel Dorff

Duration: c. 3' 30"

Allegro (♩ = c. 76+)

Player 1

Player 2

Player 3

Bass Instrument

This arrangement allows any 2 or 3 instruments in any keys, in any combination, to perform the Pachelbel Canon supported by a bass instrument in any key.

When 2 melody instruments are used, Player 1 and the Bass instrument start at bar 1 and finish at bar [100]. Player 2 waits 4 bars, entering when Player 1 begins bar [5], and then ends by holding the final fermata upon reaching the downbeat of [105].

When 3 melody instruments are used, Players 1 & 2 and the Bass instrument follow the above instructions. Player 3 waits 8 bars, entering when Player 1 begins bar [9] and Player 2 begins bar [5], and then ends by holding the final fermata upon reaching the downbeat of [105].

© 1998, 2004 by Theodore Presser Co., King of Prussia, PA  
114-41280

All Rights Reserved  
Printed in U.S.A.

International Copyright Secured

Unauthorized copying, arranging, adapting, recording, or digital storage or transmission is an infringement of copyright. Infringers are liable under the law.

**Canon:** a musical form in which one part sings a melody, and the other parts sing the same melody, but enter at different times. Canons are sometimes called rounds.

Pachelbel's Canon in D has 3 parts and a basso continuo.



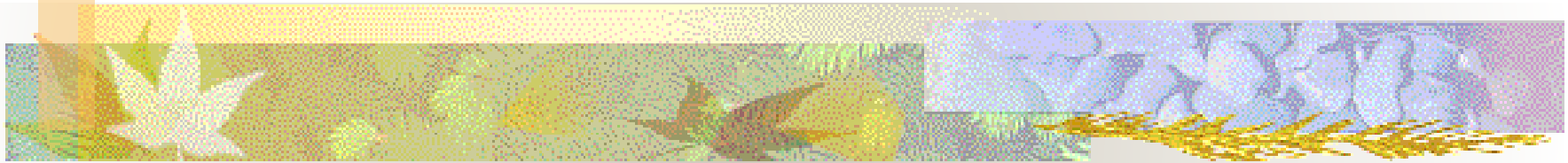
Antonio Vivaldi  
1678-1741

The Four Seasons

The 4<sup>th</sup> movements is  
“Spring”



# Baroque Instruments



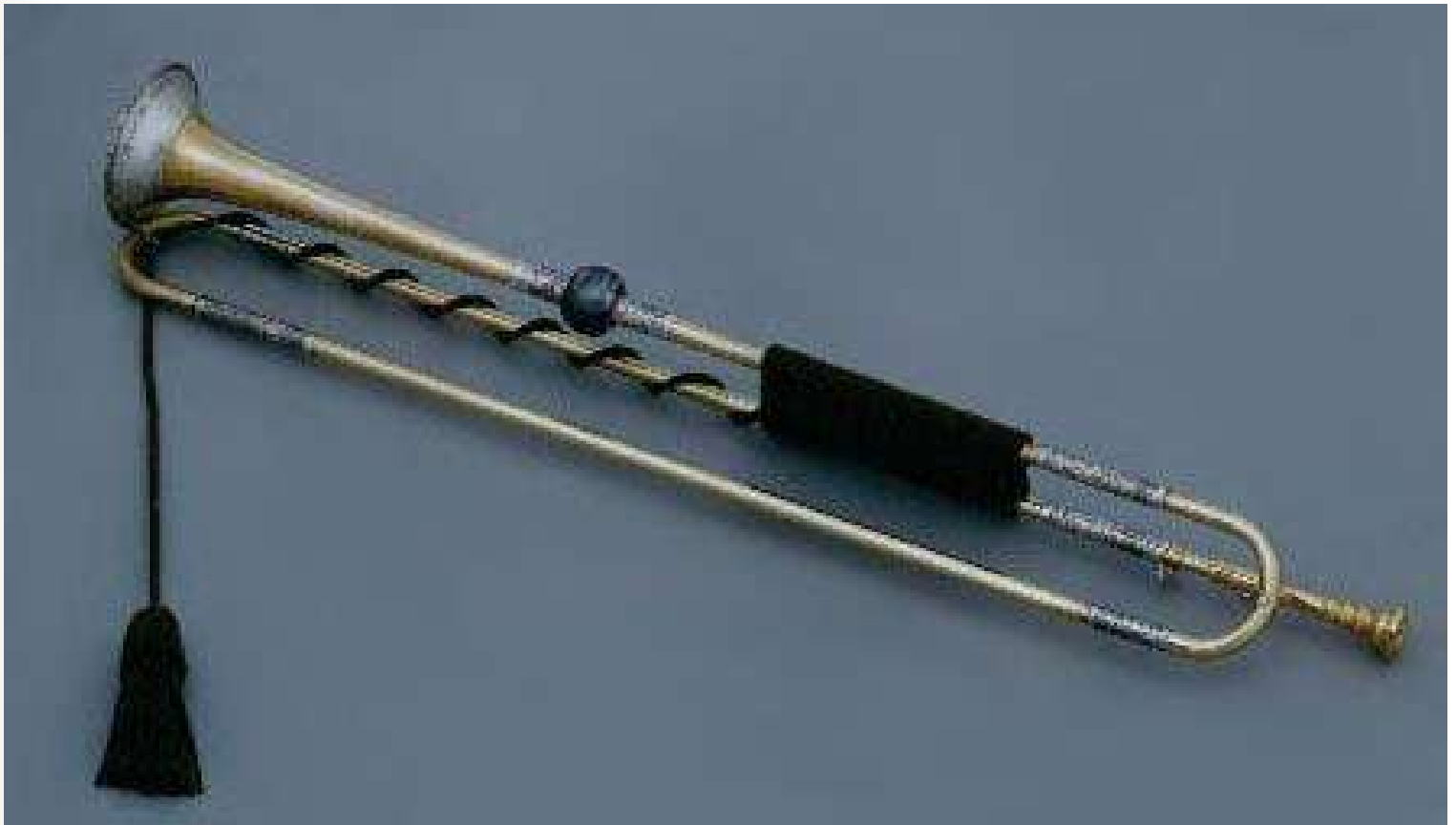
# Flute



# Recorder



# Trumpet



# Horn





# Viola







Cello


# Harpsichords





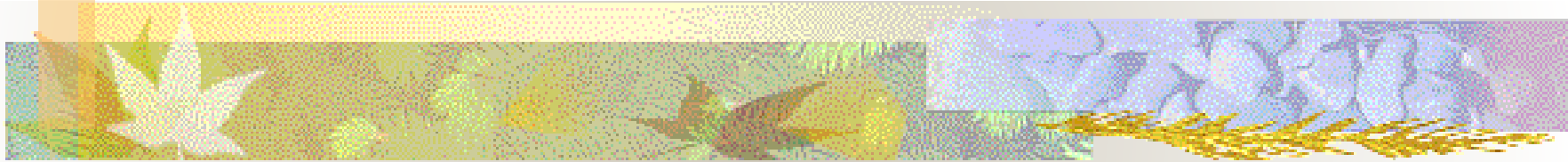


Pipe Organ

- 
- Composers began using mixed groups of instruments
  - Music was no longer only functional, it was made to be enjoyed on it's own.
    - What does “functional” mean?
  - Composers began to search for inspiration for their compositions in not only the church, but in nature.
  - Baroque music is very similar to jazz and rap in their use of **improvisation**.

# Critical Listening

Please copy and then  
answer the following on a  
separate sheet of paper  
that you will turn in:



What is Vivaldi trying to portray in this piece of music? What clues do I hear in the music that help me to make this decision?