



ATTENDANCE ZONING:

HIGH SCHOOL HHH

2021-2022 SY

SCHOOL BOARD WORKSHOP &
TOWN HALL MEETING

August 4, 2020



- 68.7 Acres
- Purchased from Pacetti Property LLC

ATTENDANCE ZONING:
HIGH SCHOOL HHH



SITE PLAN



EXTERIOR ARCHITECTURE



ADMINISTRATION / MEDIA CENTER

EXTERIOR ARCHITECTURE



GYMNASIUM

EXTERIOR ARCHITECTURE



AUDITORIUM

EXTERIOR ARCHITECTURE



ACADEMIC BUILDING

High School HHH:

- Accelerated Academic Programs
- Exceptional Student Education (ESE) Programs
- Career Academies
 - Academy of Innovation in the Built Environment
 - Academy of Future Healthcare Professionals
 - Academy of Leadership in Emerging Technologies

ATTENDANCE ZONING:
HIGH SCHOOL HHH



HIGH SCHOOL SITUATION

ATTENDANCE ZONING:
HIGH SCHOOL HHH



2018-2019 First Twenty-Day Enrollment

<u>HIGH SCHOOLS</u>	<u>TOTAL</u>
Bartram Trail High	2,676
Creekside High	2,278
Nease High	2,649
Pedro Menendez High	1,328
Ponte Vedra High	1,821
St. Augustine High	1,786
 TOTAL	 12,538

2019-2020 First Twenty-Day Enrollment

<u>HIGH SCHOOLS</u>	<u>TOTAL</u>	<u>% CHANGE</u>
Bartram Trail High	2,894	8.1%
Creekside High	2,291	0.6%
Nease High	2,905	9.7%
Pedro Menendez High	1,379	3.8%
Ponte Vedra High	1,864	2.4%
St. Augustine High	1,893	6.0%
 TOTAL	 13,226	 5.5%

ATTENDANCE ZONING:
HIGH SCHOOL HHH



2008-2009 First Twenty-Day Enrollment

<u>HIGH SCHOOLS</u>	<u>TOTAL</u>
Bartram Trail High	1,805
Nease High	1,618
 TOTAL	 8,534

2019-2020 First Twenty-Day Enrollment

<u>HIGH SCHOOLS</u>	<u>TOTAL</u>	<u>% CHANGE</u>
Bartram Trail High	2,894	60.3%
Nease High	2,905	79.5%
 TOTAL	 13,226	 55.0%

ATTENDANCE ZONING: HIGH SCHOOL HHH



New High School Planning

- High School Student Enrollment Growth requires construction
- History of opening high schools
2 in 2000; → 2 in 2008 → 1 in 2021
- Approximately 2,100 Student Stations; 2,025 Capacity

ATTENDANCE ZONING:
HIGH SCHOOL HHH



High School HHH will open for the 2021-2022 School Year.

- Allen D. Nease High School currently has 2888 9th-12th grade students and a permanent capacity of 2049.
- Bartram Trail High School currently has 2883 9th-12th grade students and a permanent capacity of 1946.

ATTENDANCE ZONING:
HIGH SCHOOL HHH



- Allen D. Nease High School and Bartram Trail High School contain large amounts of development pressure within their attendance zones.

**ATTENDANCE ZONING:
HIGH SCHOOL HHH**



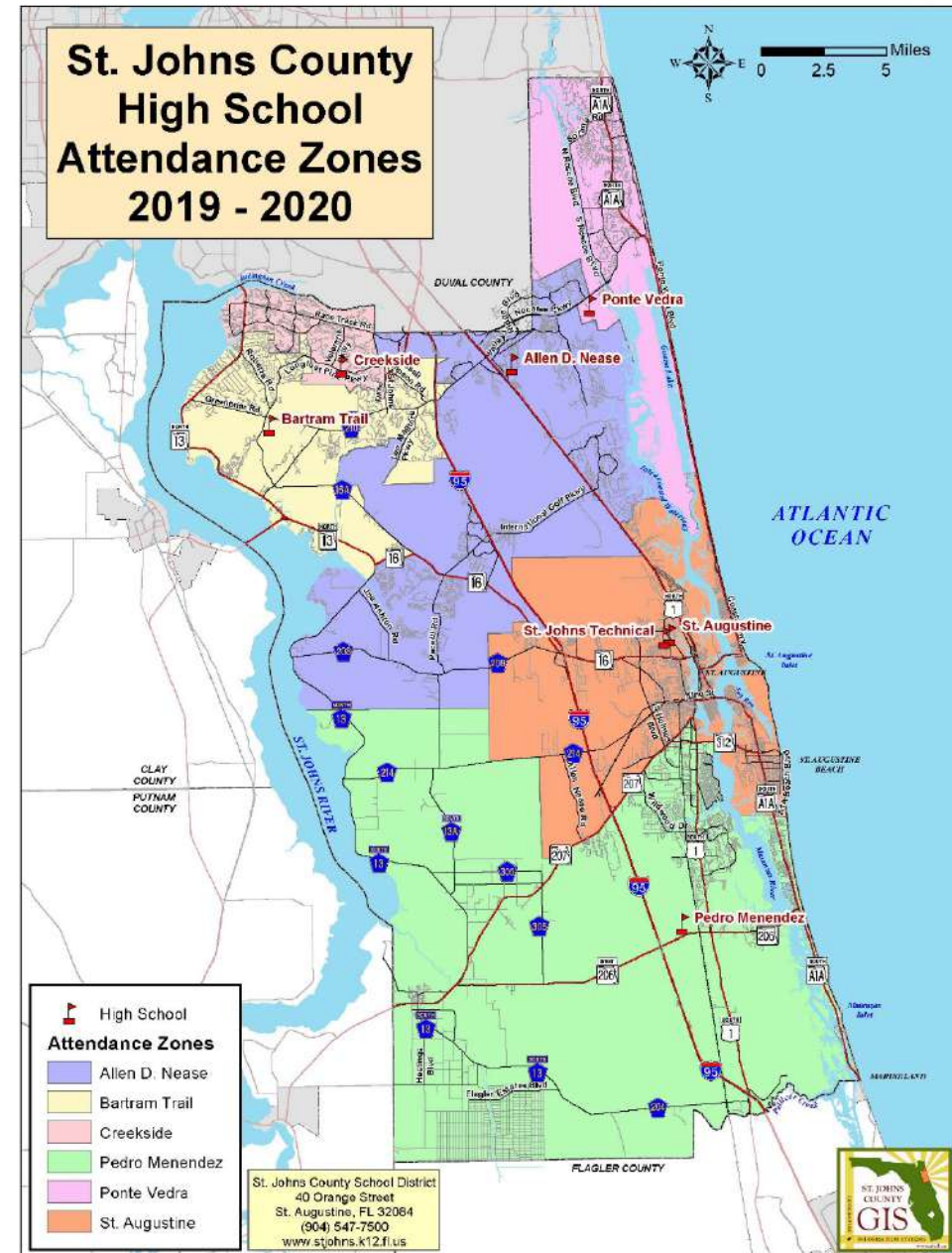


ATTENDANCE ZONING: CURRENT PROPOSAL

AS REVISED & PRESENTED AT
SCHOOL BOARD WORKSHOP

March 3, 2020

CURRENT HIGH SCHOOL ATTENDANCE ZONES



High School HHH *REVISED* proposed zone includes

- Areas currently zoned to Nease HS that are located west of I-95 (Geocodes 020108, 020109, 034104, 034110, 034111, 034114, 034117, 052101, 052102, 052103, 052104, 052105, & 052106)
- Bannon Lakes (Geocode 034102)
- Markland and N. Francis Road (Geocode 034103)
- CR 16A South of Shearwater DRI (Geocode 034115)
- Orangedale (Geocode 034109) – portion east of Trout Creek & SR 16

ATTENDANCE ZONING:
HIGH SCHOOL HHH



HIGH SCHOOL HHH ATTENDANCE ZONE

Proposed Zone Current Students (9-12):	1 592 students
Attending Zoned School:	1 274 students (80%)
Proposed Zone Current Students (7-9):	1 364 students
80%	1 091 students
Proposed Zone w/ 1 yr growth (Opening Yr):	1 178 students (8%)
Proposed Zone w/ 2 yrs growth:	1 738 students (8%)
Proposed Zone w/ 3 yrs growth:	1 877 students (8%)

ATTENDANCE ZONING:
HIGH SCHOOL HHH



Allen D. Nease High School proposed zone includes

- Areas currently zoned to Nease HS that are located East of I-95, including Nocatee and Palencia (Geocodes 034105, 034106, 034119, 034120, 034121, 034122, 034123 & 039106)
- Twin Creeks DRI (Geocode 034116)
- Areas off of RaceTrack Road currently zoned to Nease HS (Geocodes 044107 and 044108)

ATTENDANCE ZONING:
HIGH SCHOOL HHH



ALLEN D. NEASE HIGH SCHOOL ATTENDANCE ZONE

Proposed Zone Current Students (9-12):	1852 students
Attending Zoned School:	1421 students (77%)
Proposed Zone Current Students (7-9):	1609 students
77%	1239 students
Current 10 th Graders (Seniors in 21-22)	795 students
Proposed Zone w/ 1 yr growth & OOZ:	2450 students (8%)
Proposed Zone w/ 2 yrs growth & OOZ:	2181 students (8%)
Proposed Zone w/ 3 yrs growth & OOZ:	2355 students (8%)

ATTENDANCE ZONING:
HIGH SCHOOL HHH



Bartram Trail High School **REVISED** proposed zone includes

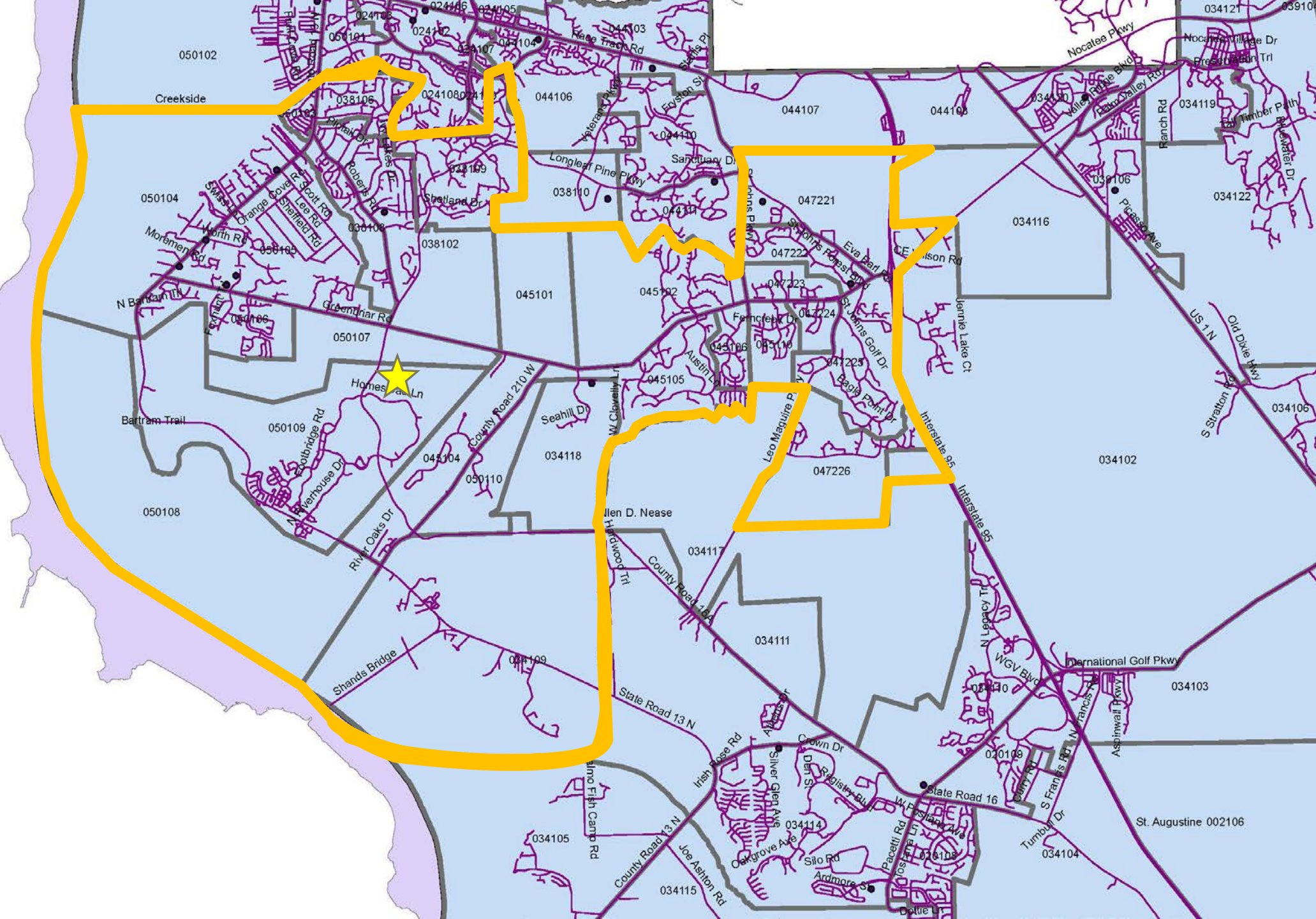
Areas currently zoned to Bartram Trail HS with the exception of:

- CR 16A South of Shearwater DRI (Geocode 034115)
- **Orangedale (Geocode 034109) – portion east of Trout Creek & SR 16**

ATTENDANCE ZONING:
HIGH SCHOOL HHH



PROPOSED
BARTRAM
TRAIL HIGH
SCHOOL
ATTENDANCE
ZONE



BARTRAM TRAIL HIGH SCHOOL ATTENDANCE ZONE

Proposed Zone Current Students (9-12):	3029 students
Attending Zoned School:	2665 students (88%)
Proposed Zone Current Students (7-9):	2745 students
88%	2415 students
Current 10 th Graders (Seniors in 21-22)	730 students
Proposed Zone w/ 1 yr growth & OÖZ:	3396 students (8%)
Proposed Zone w/ 2 yrs growth & OÖZ:	High School III to Open

ATTENDANCE ZONING:
HIGH SCHOOL HHH



OPTIONS FOR PUBLIC INPUT

- August 4th: School Board Workshop & Town Hall Meeting
- August 11th: Discussion and Approval of Advertisement for Attendance Zone Changes - School Board Meeting
- August 25th: School Board Workshop
- September 1st: School Board Workshop
- September 8th: School Board Meeting
- September 22nd: Discussion and Approval of Attendance Zone Changes – Special School Board Meeting

ATTENDANCE ZONING:
SCHOOL BOARD WORKSHOP &
TOWN HALL MEETINGS



OPTIONS FOR PUBLIC INPUT

Please visit St. Johns County School District's website:

- **Review the attendance zone proposal** posted on the School District's website.
- **Email** comments and suggestions to our design team, School Board Members and Superintendent.

www.stjohns.k12.fl.us/zoning

ATTENDANCE ZONING:
SCHOOL BOARD WORKSHOP &
TOWN HALL MEETING



QUESTIONS/DISCUSSION
