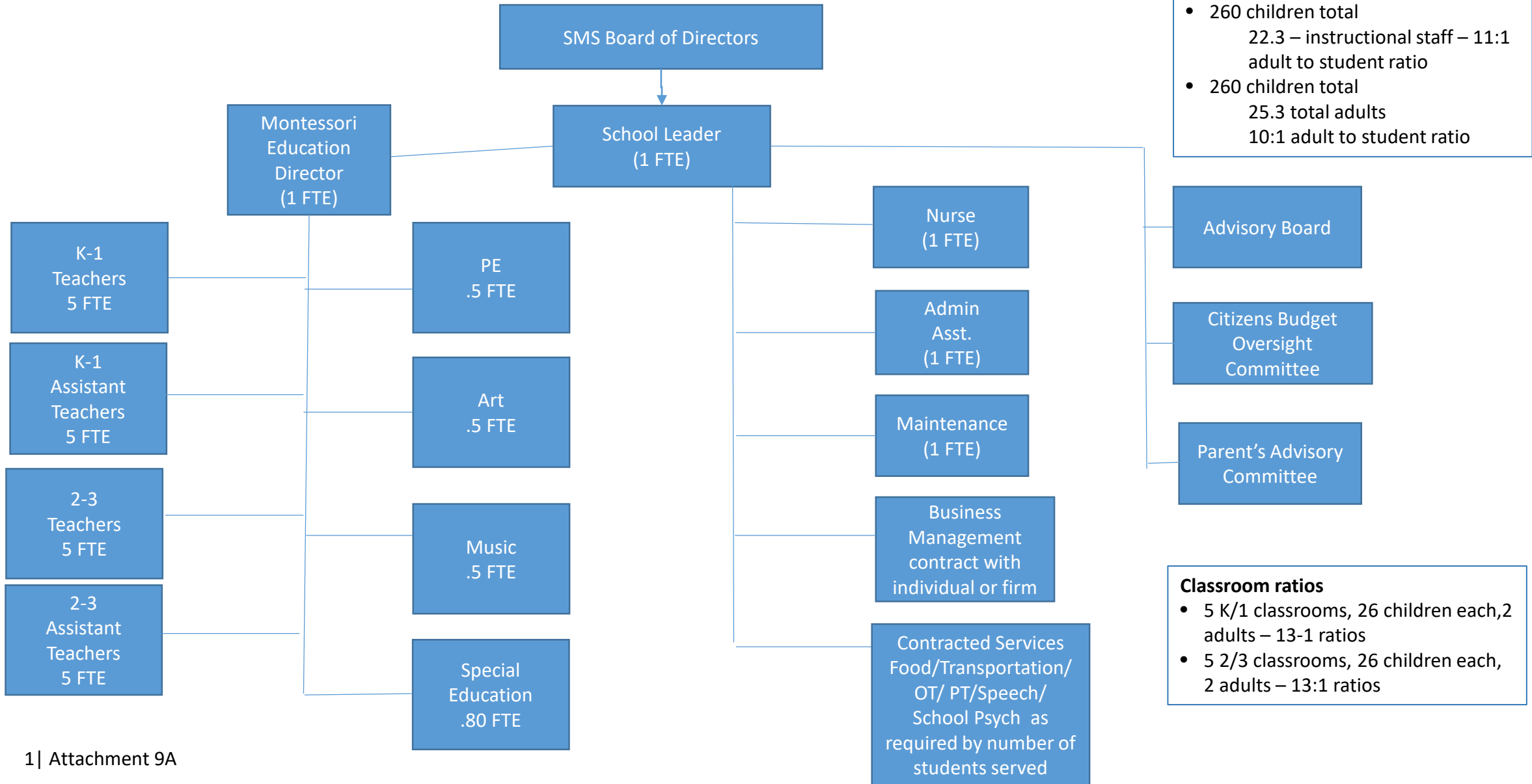


Sussex Montessori School Organizational Chart (2019-2020)



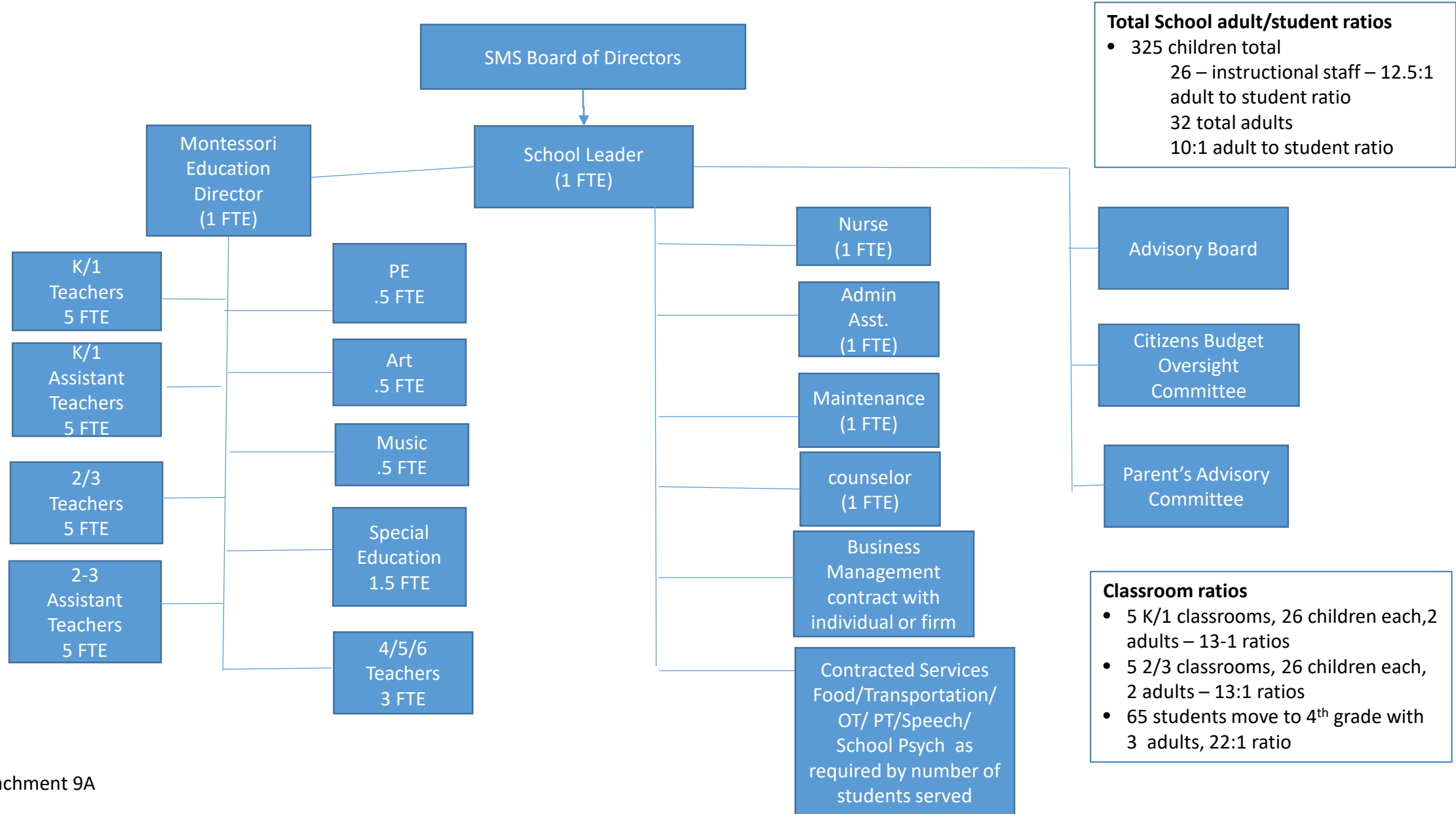
Total School adult/student ratios

- 260 children total
22.3 – instructional staff – 11:1 adult to student ratio
- 260 children total
25.3 total adults
10:1 adult to student ratio

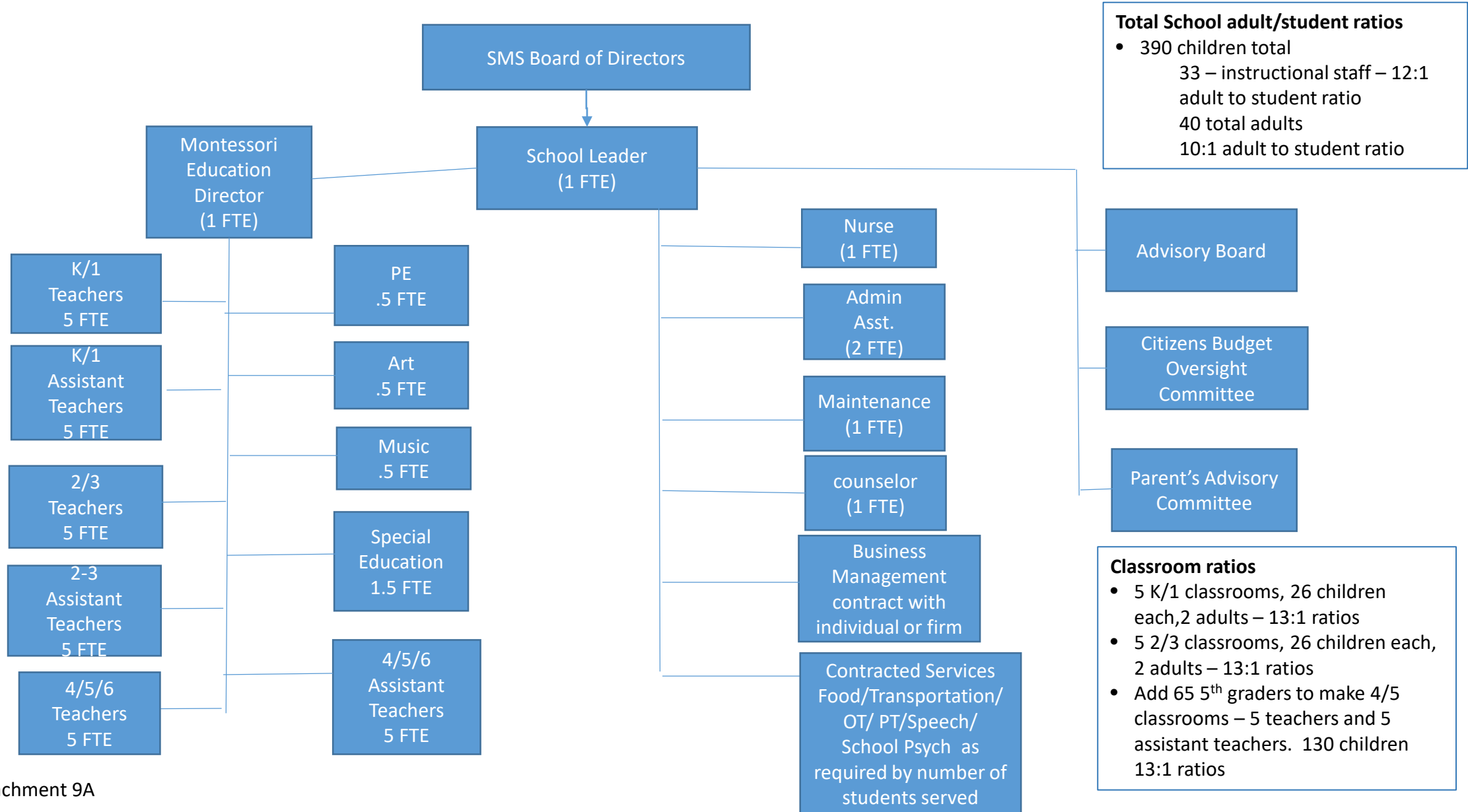
Classroom ratios

- 5 K/1 classrooms, 26 children each, 2 adults – 13:1 ratios
- 5 2/3 classrooms, 26 children each, 2 adults – 13:1 ratios

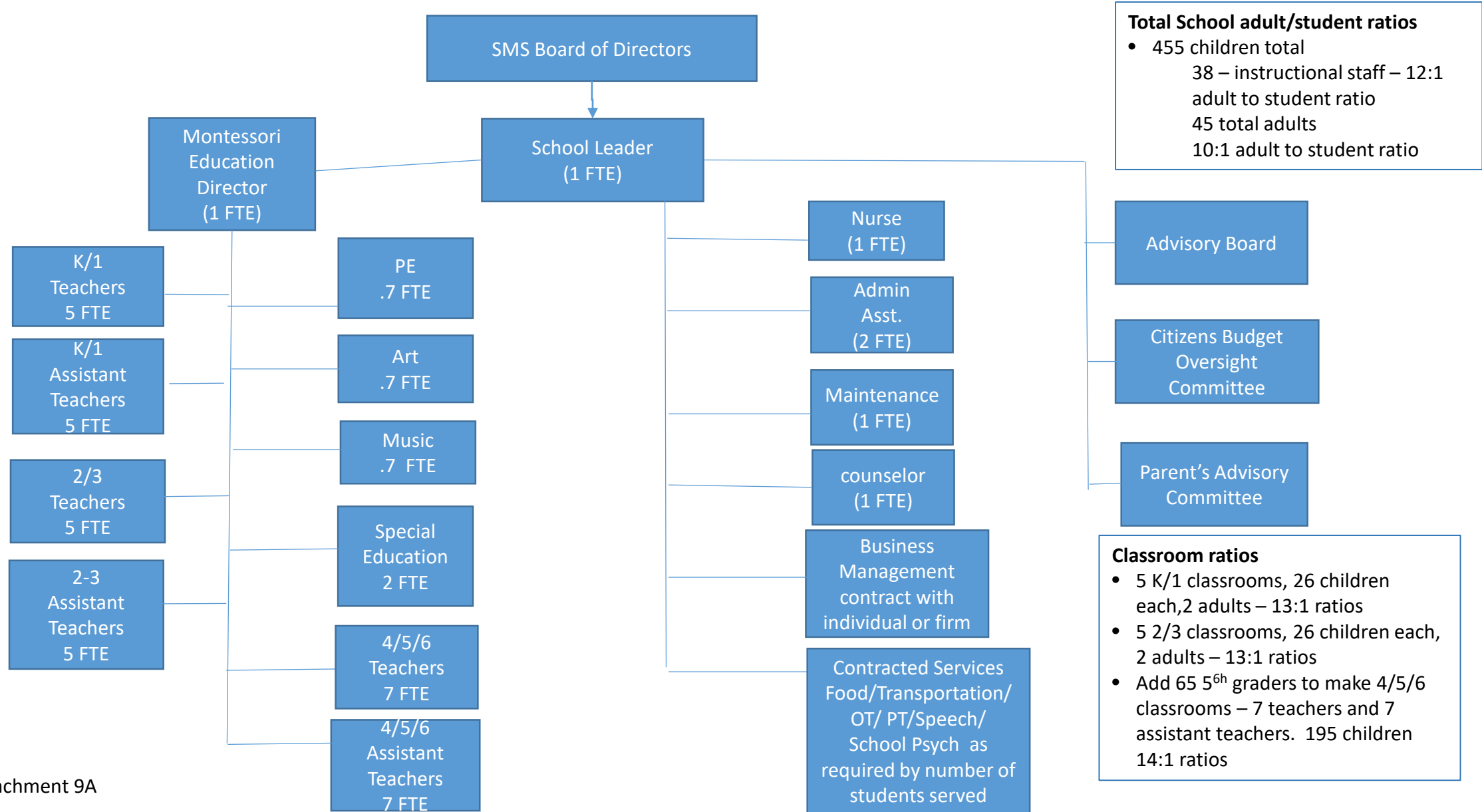
Sussex Montessori School Organizational Chart (2020-2021)



Sussex Montessori School Organizational Chart (2021-2022)



Sussex Montessori School Organizational Chart (2022-2023)



Total School adult/student ratios

- 455 children total
- 38 – instructional staff – 12:1 adult to student ratio
- 45 total adults
- 10:1 adult to student ratio

Classroom ratios

- 5 K/1 classrooms, 26 children each, 2 adults – 13:1 ratios
- 5 2/3 classrooms, 26 children each, 2 adults – 13:1 ratios
- Add 65 5th graders to make 4/5/6 classrooms – 7 teachers and 7 assistant teachers. 195 children 14:1 ratios