

***Core Indicator (2S1)***  
***Technical Skill Attainment***  
***(Measured through End-of-  
Pathway Assessment)***

**Mamie Hanson**  
**State CTAE Assessment Coordinator**  
**(404) 657-6279**  
**[mhanson@doe.k12.ga.us](mailto:mhanson@doe.k12.ga.us)**

# ***Perkins IV Legislation***

Measures must be “*valid and reliable* and include at a minimum *challenging academic standards* and *attainment of skill proficiencies*, including *achievement on technical assessments that are aligned with industry recognized standards.*” [b.2.A]

Section 113: Accountability  
(Secondary Indicators-Core Indicator 2S1)

# ***Identification Activities***

- **Subject Matter Expert (SME) Groups:**
  - Secondary
  - Post-Secondary
  - Business & Industry
- **State Program Specialists**
  - **Advisory Councils**



# ***Culmination of Identification Activities***

**Over 60 credentialing opportunities**

- **Credential:**
  - a document attesting to the trust of certain stated facts
  - certification
  - certificate
  - high school diploma
  - licensure
  - 4-year degree



# ***Georgia's Technical Skill Attainment Inventory***



national industry-  
developed certifications



national occupational  
assessments



state licensures & state  
issued certificates



# ***FY2011 End-of-Pathway Assessment Activities***

## **❖ Includes assessing all CTAE students:**

- Who have successfully completed the three or four designated courses in the pathway, **OR** students
- Who are enrolled in the last designated course (and on track)
- Where an assessment has been identified



# ***Technical Skill Attainment (2S1) Inventory Manual***

- **Section I: Introduction**
- **Section II: Technical Skill Attainment Inventory Listing**
- **Section III: Assessment Information Sheet**
- **Section IV: Funding Request Documents**
- **Section V: Student Demographic Reporting Documents**



# ***2S1 Inventory Manual***

## ***Assessment Information Sheet***

- designated courses
- credentialing exam
- testing agency
- exam blueprint
- exam cost
- duration of exam
- number of questions
- test ordering information
- **proctoring guidelines**
- testing format
- software specifications
- test availability
- testing agency contact





# ***2S1 Inventory Manual***

## ***Assessment Information Sheet***

**Program Concentration Area**



**Career Pathway Name**



**Designated Course Numbers**

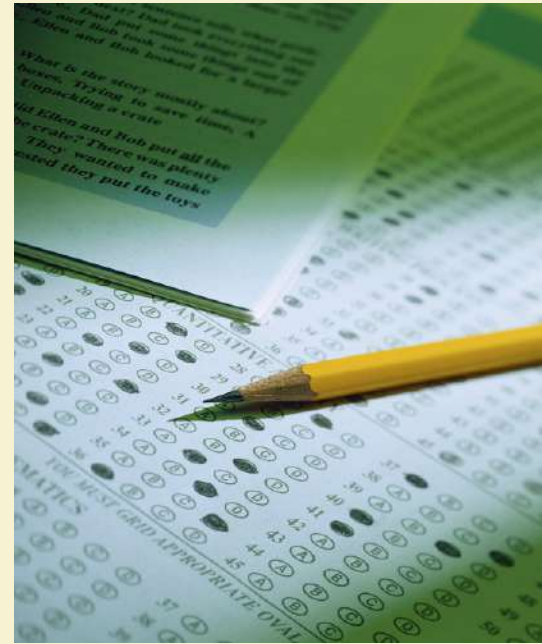


**Designated Course Titles**

# ***2S1 Inventory Manual***

## **Assessment Information Sheet**

- **Credentialing Exams:**
  - **Several credentialing options**
  - **Requires a series of exams**
  - **Offers a series, but requires taking and passing only one**
  - **Contingent upon student participation in accredited programs**
  - **18-year old age requirement; high school graduate**





# ***2S1 Inventory Manual Assessment Information Sheet***

## **➤ Testing (Credentialing)**

**Agency may:**

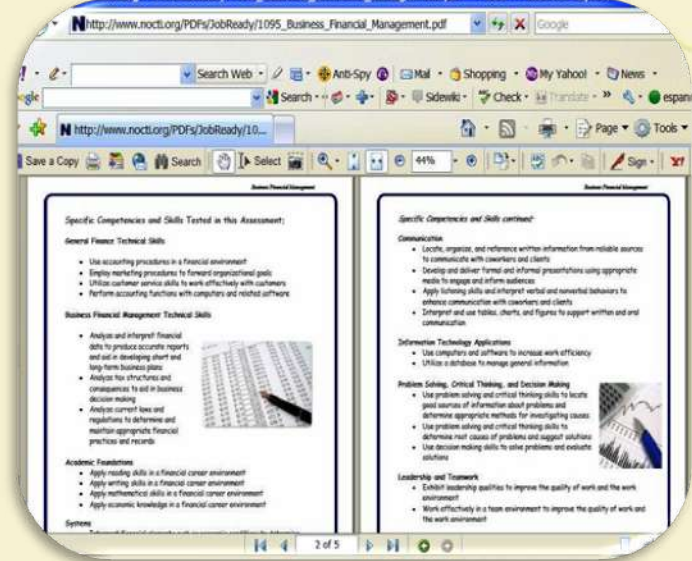
- develop and dispense exam,  
or,**
- provide testing through an  
outside testing agency**

# ***2S1 Inventory Manual Assessment Information Sheet***

## ➤ **Exam Blueprint**

### ○ **Blueprint:**

- **serves as foundation of development**
- **includes competencies tested; weighted; number of questions; duration of exam**
- **Blueprint formats provided:**
  - **in hard copy**
  - **electronically through links from information sheets**
  - **on the CTAE website by September 1<sup>st</sup>**



# ***2S1 Inventory Manual***

## ***Assessment Information Sheet***

### **➤ Exam Costs:**

- ***Range between \$10 - \$336 per student***
- ***Lower costs on occupational assessments***
- ***Higher costs on stipulated industry certifications***





# ***2S1 Inventory Manual***

## ***Assessment Information Sheet***

### **Number of Questions:**

- *Typically 50 - 60*
- *Can range up to 250 – 300*

### **Duration of Exam:**

- *Ranges 1 hour – 3 hours*
- *Allows multiple testing sessions*
- *Not timed, allow 50 - 60 minutes*

### **Cut-Score:**

- *70% average pass rate*
- *May not be published by testing agency*

# ***2S1 Inventory Manual***

## ***Assessment Information Sheet***



### **➤ Test Ordering Information:**

- **Before ordering exams, many testing agencies may require:**
  - **Schools to establish locations as testing sites by:**
    - 1.completing a testing agreement form and other forms of documentation**
    - 2.creating a user account**
    - 3.verifying a secure testing environment**
    - 4.signing a proctor's agreement form or oath**

# ***2S1 Inventory Manual***

## **Assessment Information Sheet**

### **➤ Test Ordering Information:**

- Requires testing at a testing center:**
  - 1. Pearson Vue**
  - 2. Prometric Testing**
  - 3. DL Roope**
- Multiple testing center locations throughout the state**
- Links provided on information sheets:**
  - 4. Testing site locations**
  - 5. Testing ordering information**

# ***2S1 Inventory Manual***

## **Assessment Information Sheet**

### ➤ **Proctoring Guidelines:**

- **Most agencies allow any professional staff member to serve as proctor:**
  - **testing coordinator**
  - **administrator**
  - **media specialist**
  - **administrative assistant**
- **Agencies typically do not allow instructor of students tested to serve as proctors**
- **Check proctoring guidelines links**



# ***2S1 Inventory Manual***

## ***Assessment Information Sheet***

### **➤ Testing Format:**

- **On-line testing (cognitive)**
- **Helps alleviate some security concerns**
- **Provides quicker results to students & administrators**
- **Limited number of paper & pencils exams listed**
- **Limited number of required performance exams**





# ***2S1 Inventory Manual***

## **Assessment Information Sheet**

### **➤ Computer Specifications:**

- Minimum hardware and software specifications required by testing agency

### **➤ Test Availability:**

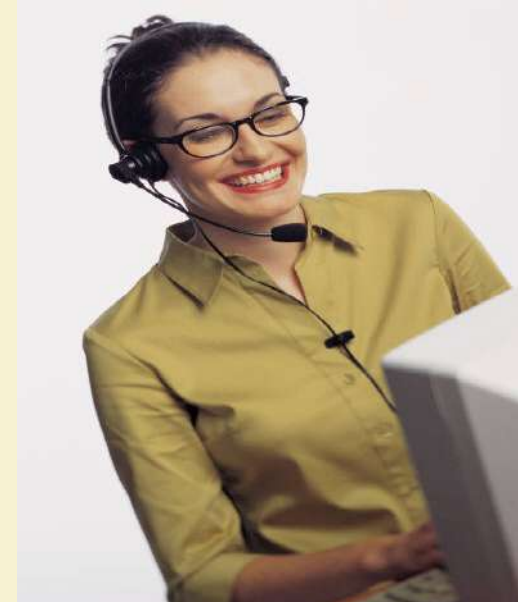
- **Most exams available year-round**
- **Some exams offered during a specific time-frame, i.e.: NA3SA exams, GGIA exams**

**Check assessment information sheets**

# ***2S1 Inventory Manual***

## **Assessment Information Sheet**

- **Testing Agency Contacts:**
  - **Administrative contact:**
    - **Credentialing information**
    - **Testing agency policies**
  - **Technical support contact:**
    - **Issues with on-line testing**
    - **Other technical inquiries**



# ***FY2011 CTAE Assessment Funding Support***

- **To assist systems with the end-of-pathway assessment process:**
  - Funding will be provided to support assessment activities
  - Funding support document sent to local systems before August 1<sup>st</sup>
  - Funding support document completed & sent via email to [mhanson@doe.k12.ga.us](mailto:mhanson@doe.k12.ga.us) by August 31<sup>st</sup>
  - Funding amounts will be placed in GAORS

# ***FY2011 CTAE Assessment Funding Request Document***

FY2011 CTAE Assessment Funding Request Document



System Name	System Number	School Name	School Code			
Program Concentration	Career Pathway	Available Pathway Exams	Pathway Sub Category Exams Available	Cost Per Exam	Number of Exams	Total Cost of Exams Requested
Agriculture						
	Agribusiness Management	Currently Unavailable				
	Agricultural Mechanics	Agricultural Mechanics Assessment		\$19.00		
	Agriscience	Currently Unavailable				
	Animal Science	Currently Unavailable				
	Forestry/Natural resources	Forestry Products & Processing Assessment		\$19.00		
	Plant Science/Horticulture	GGIA Junior Certification Level I		\$20.00		
		GGIA Junior Certification Level		\$20.00		
	Veterinary Science	Currently Unavailable				
Architecture, Construction, Communications & Transportation						
	Transportation Logistical Operations (Ground/Marine)	NA3SA Automotive Service Technology Skills Standards Assessment:	following exams can be taken for the single exam cost.	\$15.00		

***WE WILL LEAD THE NATION IN IMPROVING STUDENT ACHIEVEMENT.***

# ***FY2011 CTAE Assessment Funding Request Document***

## FY2011 CTAE Assessment Funding Request Document

		Cosmetology Skills Connect		\$20.00		
	Physical Medicine	Foundation Skill Standards Assessment		\$12.00		
Marketing Sales & Services						
	Marketing & Management	Marketing Education Management Trainee		\$12.00		
	Marketing Communications & Promotion	Fundamental Marketing Concepts		\$20.00		
	Fashion marketing	Retail Trades Assessment		\$19.00		
	Sports & Entertainment Marketing	Currently Unavailable				
	Travel Marketing & Lodging Management	Currently Unavailable				
			Total Amount of Exam Funding Support Requested			



***WE WILL LEAD THE NATION IN IMPROVING STUDENT ACHIEVEMENT.***



# **Reporting FY2011 Test Data: Student Demographics**

- **Reported at the end of school year (June 2011)**
- **Data Requested:**
  - **System Name**
  - **System Code**
  - **Number Tested**
  - **Number Passed**
  - **Number Failed**
- **Demographic Breakdown**
  - **Female/Male**
  - **Ethnicity:**
    - **African-American**
    - **American Indian**
    - **Asian**
    - **Caucasian**
    - **Hispanic**
    - **Pacific Islander**

# Reporting FY2011 Test Data: Student Demographics

**FY2010 CTAE End-of-Pathway Assessment Demographic Data**

Exam Name	System Name	System Code	School Code	Total # of Students Tested	Total # of Student Passed	Total # of Students Failed	Caucasian Females Passed	Caucasian Females Failed	Caucasian Males Passed	Caucasian Males Failed	Passed	African-American Females Failed	African-American Males Passed	African-American Males Failed	Hispanic Females Passed	Hispanic Females Failed	Hispanic Males Passed	Hispanic Males Failed	American Indian Females Passed	American Indian Females Failed	American Indian Males Passed	American Indian Males Failed	Asian Females Passed	Asian Females Failed	Asian Males Passed	Asian Males Failed	Pacific Islander Females Passed	Pacific Islander Females Failed
Accounting: Business Financial Management																												
Architectural Drawing & Design: Skills Connect Architectural Drafting																												
Small Business Development: Fundamental Business Concepts																												
Therapeutic Services/Medical Services: National Healthcare Foundation Skills Assessment																												
Therapeutic Services/Nursing: National Healthcare Foundation Skills Assessment																												

*WE WILL LEAD THE NATION IN IMPROVING STUDENT ACHIEVEMENT.*

# ***FY2011 Assessment Development Activities***

- **Piloting Teaching As a Profession State Exam**
- **Setting cut-scores for:**
  - Teaching As a Profession
  - Engineering
- **Assessment Portals:**
  - Funding Support
  - Submitting Test Data



# ***Next Assessment Session!***

***11:30 am***

- **Dwayne Hobbs:**
  - State Program Specialists to work with program area instructors on utilizing blueprints in instructional activities
- **Angie Wood:**
  - Identifying pathway completers
- **Dionne Johnigan:**
  - Utilizing data to improve student scores