

GMEA All State Chorus Sight Reading

11th-12th Grade Tenor

2001-02

2001-02

2002-03

2002-03

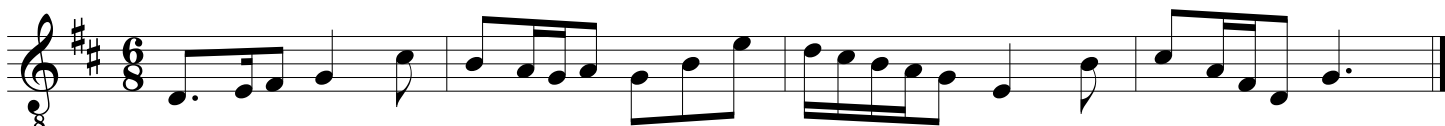
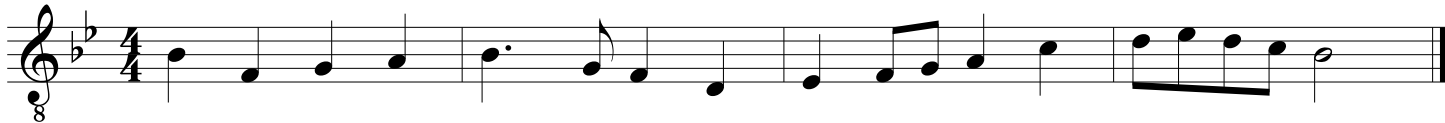
2003-04

2003-04

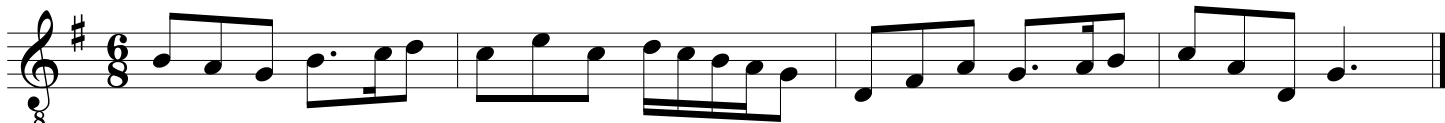
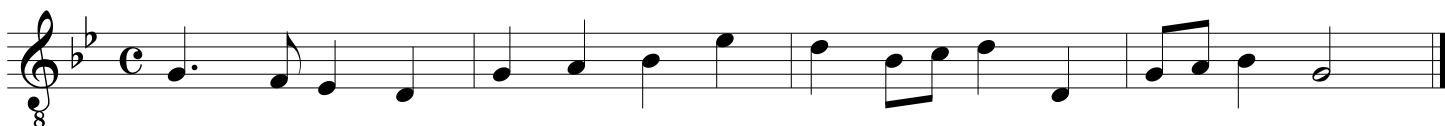
GMEA All State Chorus Sight Reading

11th-12th Grade Tenor

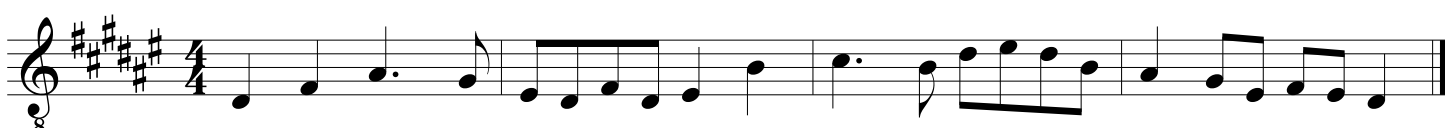
2004-05



2005-06



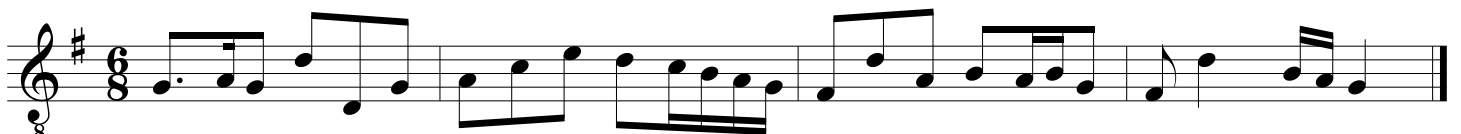
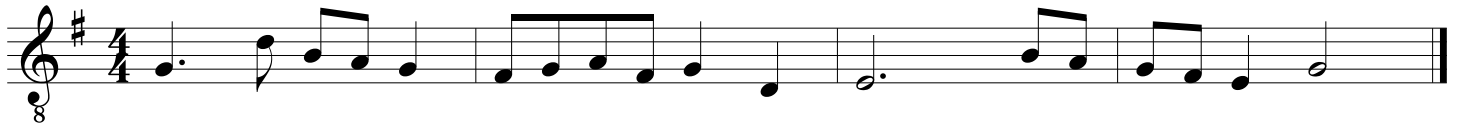
2006-07



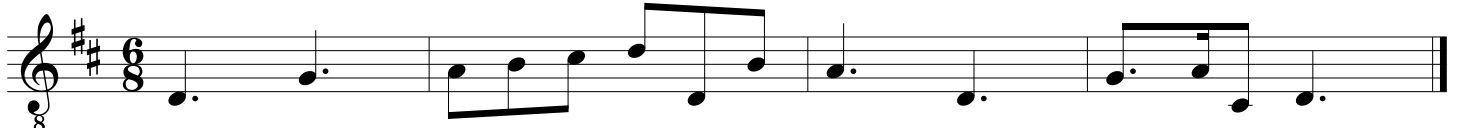
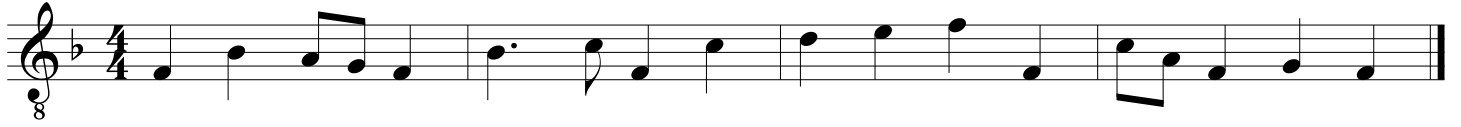
GMEA All State Chorus Sight Reading

11th-12th Grade Tenor

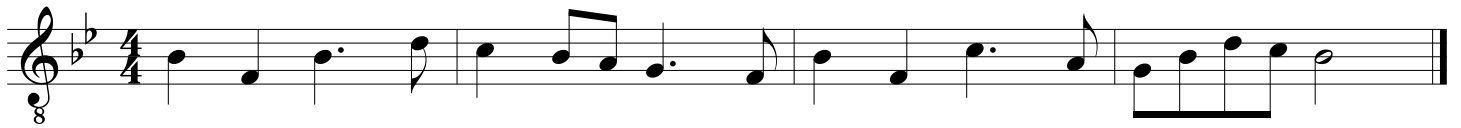
2007-08



2008-09



2009-10



GMEA All State Chorus Sight Reading

11th-12th Grade Tenor

2010-11



Three staves of musical notation for the 2010-11 piece. The first staff is in treble clef with a key signature of three sharps (F#, C#, G#) and a 4/4 time signature. The second staff is in treble clef with a key signature of one sharp (F#) and a 4/4 time signature. The third staff is in treble clef with a key signature of two flats (Bb, Eb) and a 6/8 time signature.

2011-12



Three staves of musical notation for the 2011-12 piece. The first staff is in treble clef with a key signature of two flats (Bb, Eb) and a 4/4 time signature. The second staff is in treble clef with a key signature of two flats (Bb, Eb) and a common time (C) signature. The third staff is in treble clef with a key signature of two flats (Bb, Eb) and a 6/8 time signature.

2012-13



Three staves of musical notation for the 2012-13 piece. The first staff is in treble clef with a key signature of three flats (Bbb, Ebb, Abb) and a 3/4 time signature. The second staff is in treble clef with a key signature of two flats (Bb, Eb) and a common time (C) signature. The third staff is in treble clef with a key signature of two flats (Bb, Eb) and a 6/8 time signature.

GMEA All State Chorus Sight Reading

11th-12th Grade Tenor

2013-14

The image displays three staves of musical notation for a tenor voice part. The first staff is in the key of D major (indicated by two sharps) and 4/4 time. The second staff is in the key of B minor (indicated by two flats) and 4/4 time. The third staff is in the key of D major (indicated by two sharps) and 6/8 time. Each staff contains a single melodic line with various rhythmic values and rests, ending with a double bar line.