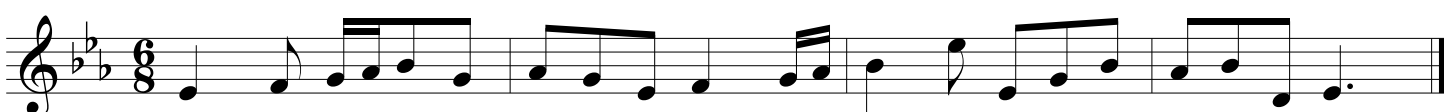


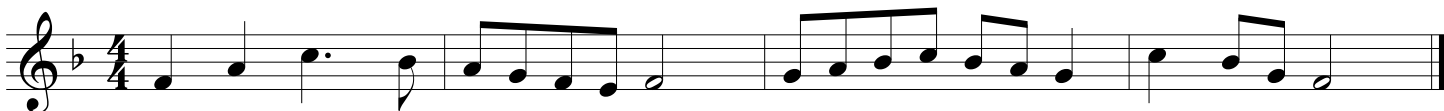
# GMEA All State Chorus Sight Reading

## 11th-12th Grade Soprano

2001-02



2002-03



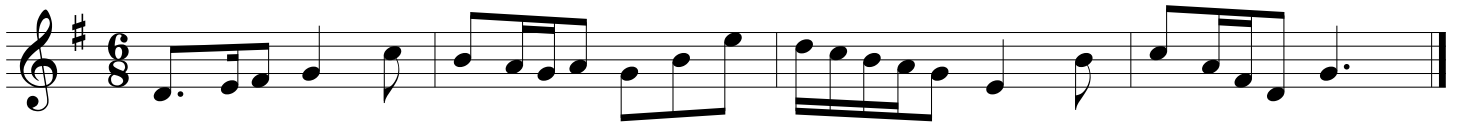
2003-04



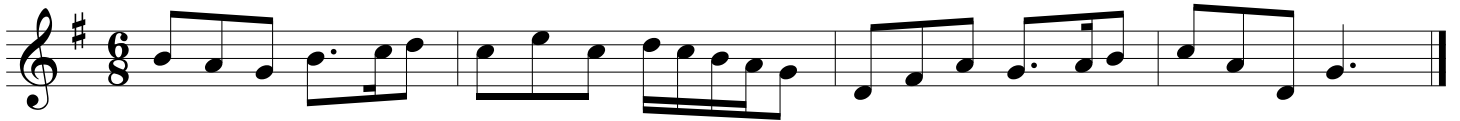
# GMEA All State Chorus Sight Reading

## 11th-12th Grade Soprano

2004-05



2005-06



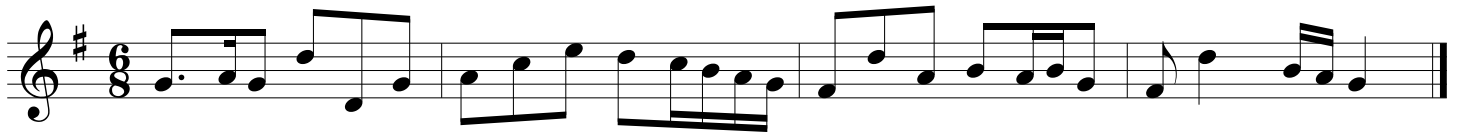
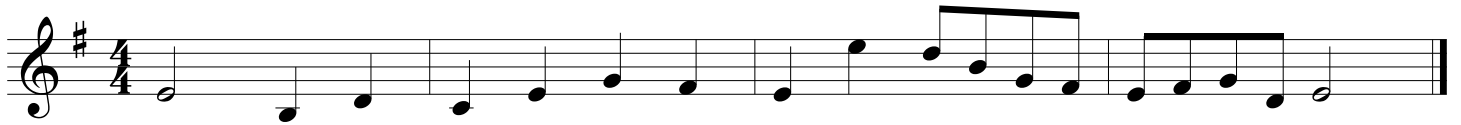
2006-07



# GMEA All State Chorus Sight Reading

## 11th-12th Grade Soprano

2007-08



2008-09



2009-10



# GMEA All State Chorus Sight Reading

## 11th-12th Grade Soprano

2010-11

Three staves of musical notation for the 2010-11 piece. The first staff is in treble clef with a key signature of two sharps (F# and C#) and a 4/4 time signature. The second staff is in treble clef with a key signature of one sharp (F#) and a 4/4 time signature. The third staff is in treble clef with a key signature of two flats (Bb and Eb) and a 6/8 time signature.

2011-12

Three staves of musical notation for the 2011-12 piece. The first staff is in treble clef with a key signature of two flats (Bb and Eb) and a 4/4 time signature. The second staff is in treble clef with a key signature of two flats (Bb and Eb) and a common time (C) signature. The third staff is in treble clef with a key signature of two flats (Bb and Eb) and a 6/8 time signature.

2012-13

Three staves of musical notation for the 2012-13 piece. The first staff is in treble clef with a key signature of three flats (Bb, Eb, and Ab) and a 3/4 time signature. The second staff is in treble clef with a key signature of two flats (Bb and Eb) and a common time (C) signature. The third staff is in treble clef with a key signature of two flats (Bb and Eb) and a 6/8 time signature.

# GMEA All State Chorus Sight Reading

## 11th-12th Grade Soprano

2013-14

The image displays three staves of musical notation for a soprano voice part. The first two staves are in 4/4 time and feature a key signature of three sharps (F#, C#, G#). The first staff begins with a treble clef and a key signature of three sharps, followed by a 4/4 time signature. The second staff begins with a treble clef and a key signature of three flats (Bb, Eb, Ab), followed by a 4/4 time signature. The third staff is in 6/8 time and features a key signature of three sharps (F#, C#, G#), starting with a treble clef. Each staff contains a sequence of notes and rests, ending with a double bar line.