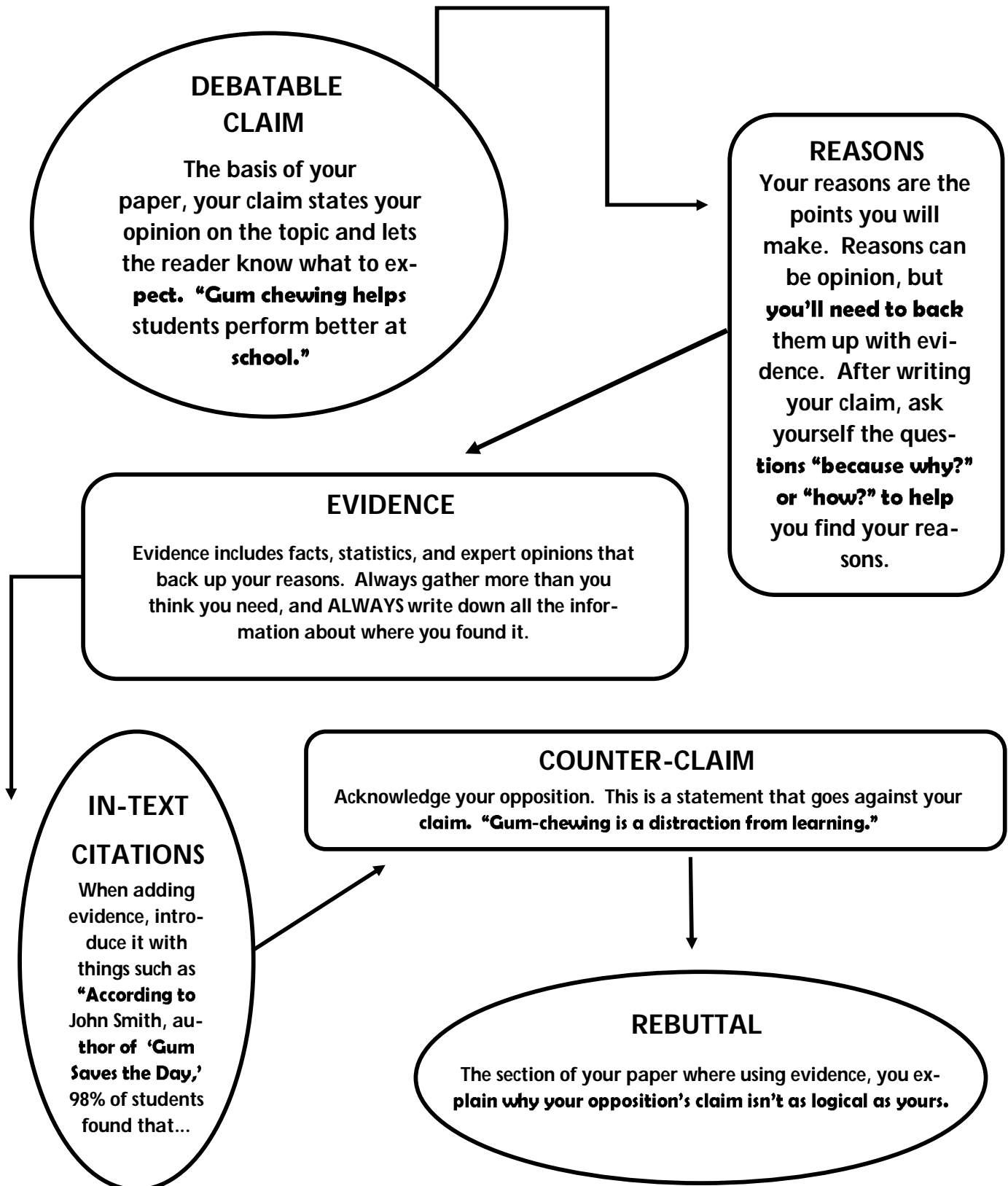


Argumentative Writing: Quick Reference



glue this side down

CLAIM

REASONS

EVIDENCE

**IN-TEXT
CITATIONS**

**COUNTER-
CLAIM**

REBUTTAL

Directions: Cut on solid lines and fold on dotted lines. Cut out definitions and glue under tab of the correct term.

Using evidence and reasoning to show why your opponent's argument isn't as logical as yours

Introducing evidence and giving credit to the original author and source

The argument of your opposition

The basis of your argument

Why you believe what you do; why your argument is a good one

Facts, statistics, and expert opinions that support your reasons