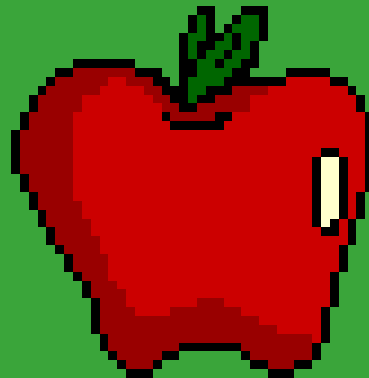
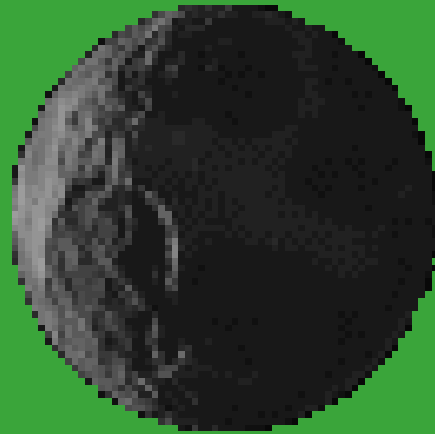


Are You Smarter
Than a APHG
student?



Migration

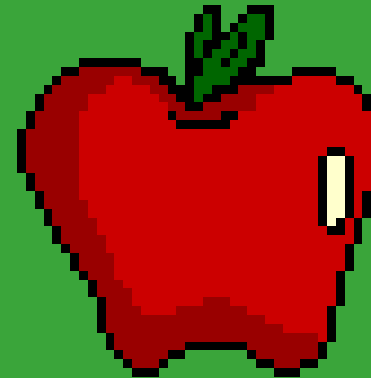


The ability to move from one location to another is

- A) migration.
- B) mobility.
- C) net migration.
- D) voluntary migration.



The ability to move from one location
to another is
B) mobility.

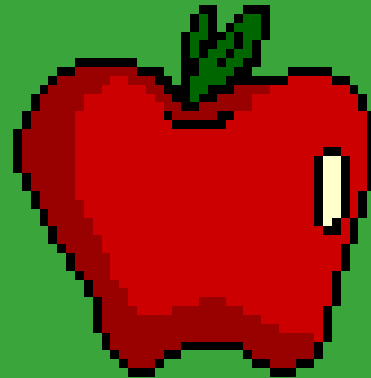


A permanent move to a new location is

- A) migration.
- B) mobility.
- C) net migration.
- D) voluntary migration.



A permanent move to a new location is
A) migration.



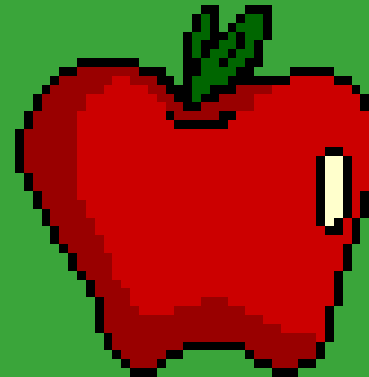
A country has net immigration if emigration
_____ immigration.

- A) equals
- B) exceeds
- C) is closer to net migration than
- D) is less than



A country has net immigration if emigration
_____ immigration.

D) is less than



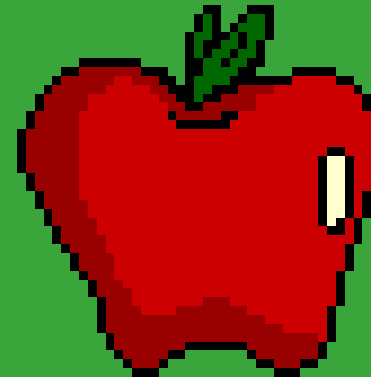
Refugees migrate primarily because of which type of push factor?

- A) economic
- B) environmental
- C) political
- D) all of the above



Refugees migrate primarily because of which type of push factor?

C) political



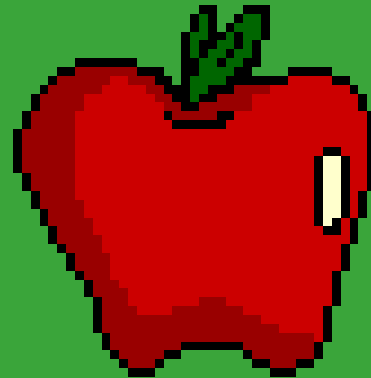
Which of the following events would be considered a migration pull factor?

- A) communist takeover of a government
- B) failed harvest
- C) flooding of a river
- D) opening of a new factory



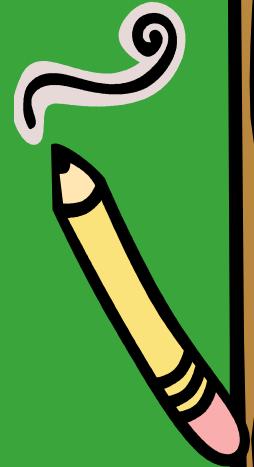
Which of the following events would be considered a migration pull factor?

D) opening of a new factory

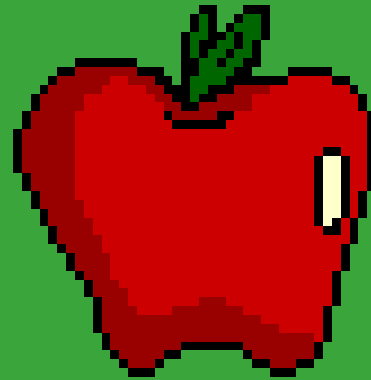


Several million Irish migrated in the 1840s primarily because

- A) the English forced them to become refugees.
- B) disastrous economic conditions pushed them out of the country.
- C) poor environmental conditions induced them to migrate.
- D) they were attracted to the United States



Several million Irish migrated in the 1840s primarily because
B) disastrous economic conditions pushed them out of the country.



100-year floods occurred in the floodplain of the Missouri River in 1993 and again in 1995.

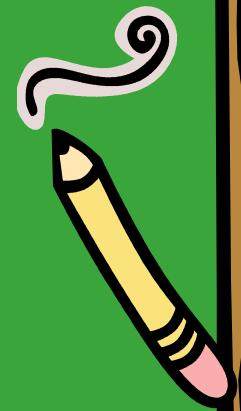
This proves that

A) the area is not actually in a 100-year floodplain.

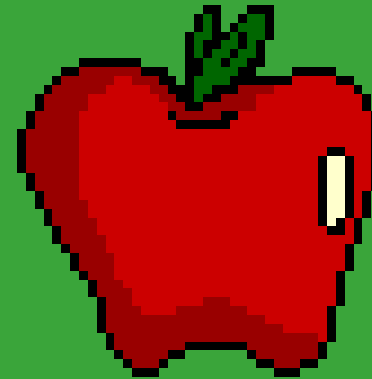
B) a 100-year flood can occur twice within 2 years.

C) the area is actually in a 2-year floodplain.

D) all of the above



100-year floods occurred in the floodplain of the Missouri River in 1993 and again in 1995. This proves that
B) a 100-year flood can occur twice within 2 years.



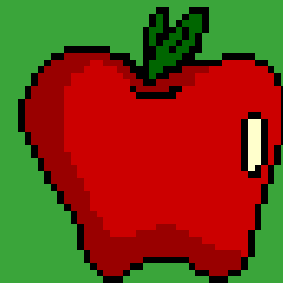
Millions of West Africans who migrated to Nigeria during the 1970s, when the country's economy expanded, were expelled during the 1980s, when the country's economy declined. This is an example of

- A) an economic migration factor changing to an environmental migration factor.
- B) emigration changing to immigration.
- C) forced migration changing to voluntary migration.
- D) a pull factor changing to a push factor.



Millions of West Africans who migrated to Nigeria during the 1970s, when the country's economy expanded, were expelled during the 1980s, when the country's economy declined. This is an example of

D) a pull factor changing to a push factor.

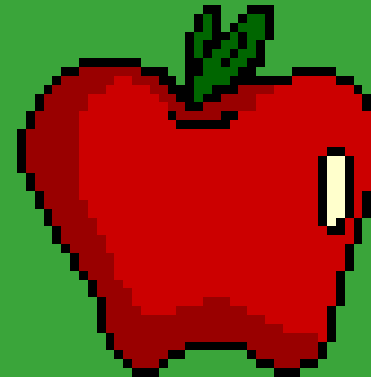


The most important pull factor for migrants to North America is

- A) economic.
- B) environmental.
- C) forced.
- D) political.



The most important pull factor for migrants to North America is
A) economic.



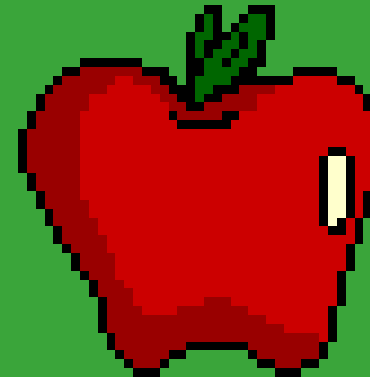
A physical feature, such as a body of water, which hinders migration is an example of

- A) an environmental push factor.
- B) a forced migration.
- C) an intervening obstacle.
- D) a political pull factor



A physical feature, such as a body of water, which hinders migration is an example of

C) an intervening obstacle.

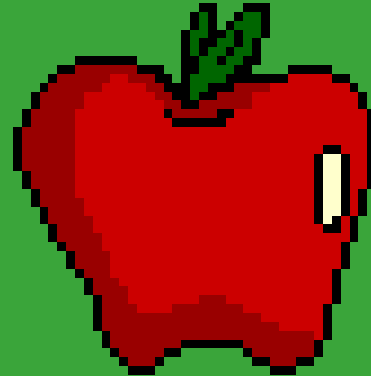


The purpose of the enclosure movement in England was to

- A) promote more efficient agriculture.
- B) encourage emigration to the United States.
- C) provide more workers for factories.
- D) keep people in England



The purpose of the enclosure movement in England was to
A) promote more efficient agriculture.



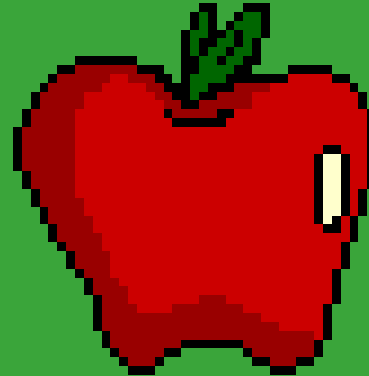
Most migrants to the United States during the 1840s and 1850s came from which part of Europe?

- A) north and east
- B) north and west
- C) south and east
- D) south and west



Most migrants to the United States during the 1840s and 1850s came from which part of Europe?

B) north and west



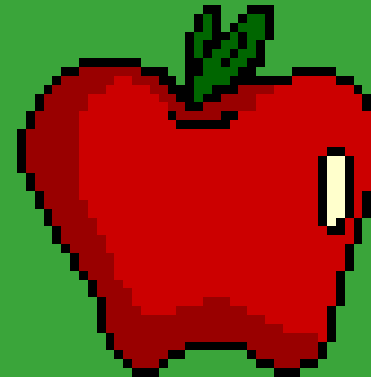
Most migrants to the United States during the early twentieth century came from which part of Europe?

- A) north and east
- B) north and west
- C) south and east
- D) south and west



Most migrants to the United States during the early twentieth century came from which part of Europe?

C) south and east



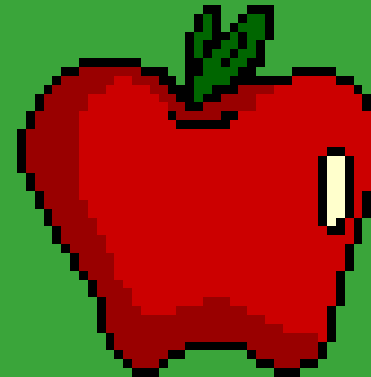
Most migrants to the United States during the 1960s and 1970s came from

- A) Africa.
- B) Asia.
- C) Europe.
- D) Latin America



Most migrants to the United States during the 1960s and 1970s came from

B) Asia.



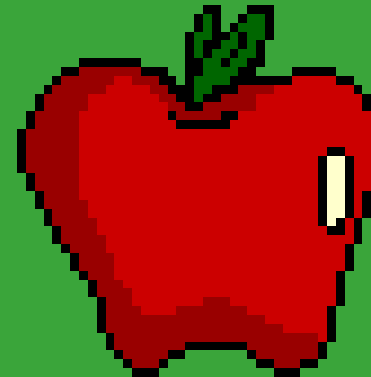
Most migrants to the United States during the 1980s came from

- A) Africa.
- B) Asia.
- C) Europe.
- D) Latin America.



Most migrants to the United States during the 1980s came from .

D) Latin America.



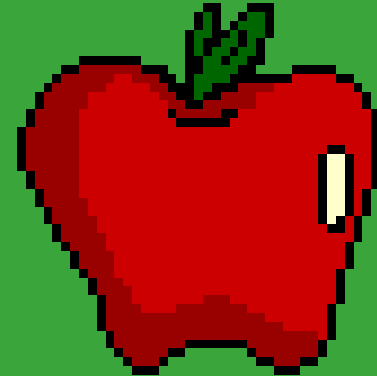
Norwegians were most likely to immigrate to the United States

- A) prior to 1840.
- B) during the 1840s and 1850s.
- C) during the 1880s and 1890s.
- D) between 1900 and 1915.



Norwegians were most likely to immigrate to the United States

C) during the 1880s and 1890s.



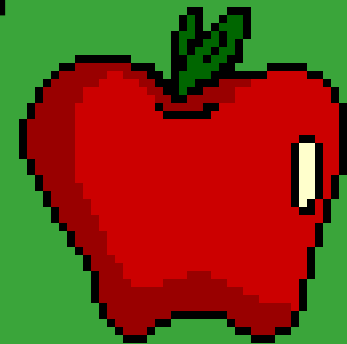
The main impact of the 1920s quota laws on the national origin of immigrants to the United States was to

- A) encourage more migration from Asia and Latin America.
- B) admit migrants mostly from Europe.
- C) permit migrants from any region of the world.
- D) all of the above



The main impact of the 1920s quota laws on the national origin of immigrants to the United States was to

B) admit migrants mostly from Europe.



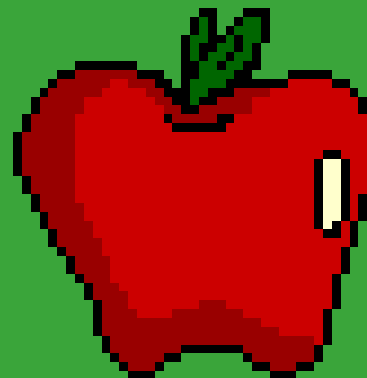
The largest numbers of recent immigrants to the United States are

- A) illegal immigrants.
- B) political refugees.
- C) relatives of U.S. residents.
- D) talented professionals



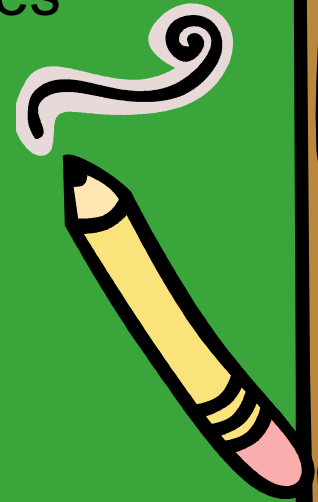
The largest numbers of recent immigrants to the United States are

C) relatives of U.S. residents.



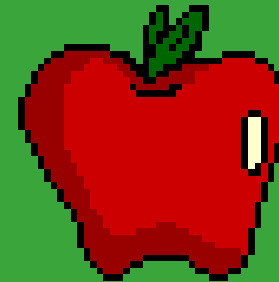
According to the 1986 Immigration Reform and Control Act, undocumented immigrants were

- A) permitted to become legal residents.
- B) increasingly deported if caught.
- C) encouraged to remain because of shortages of workers.
- D) no longer eligible for public services in the United States



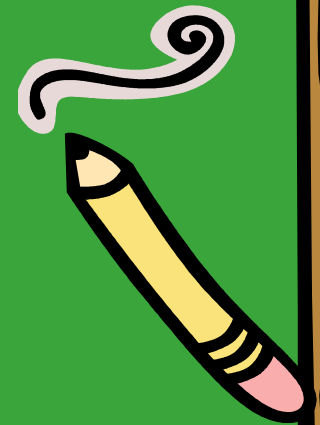
According to the 1986 Immigration Reform and Control Act, undocumented immigrants were

A) permitted to become legal residents.



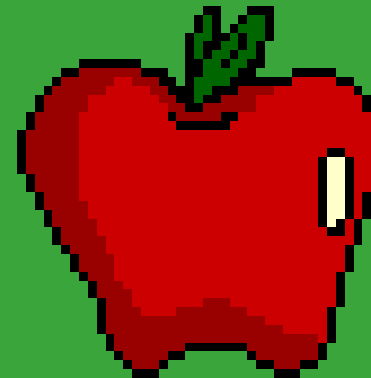
Pollero or *coyote* is a term for

- A) an undocumented immigrant from Mexico.
- B) someone who helps undocumented Mexicans immigrate.
- C) a Mexican made legal by the 1986 Immigration Reform and Control Act.
- D) a U.S. Border Patrol agent



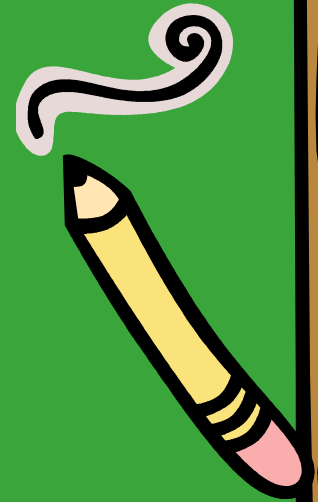
Pollero or *coyote* is a term for

B) someone who helps undocumented
Mexicans immigrate.



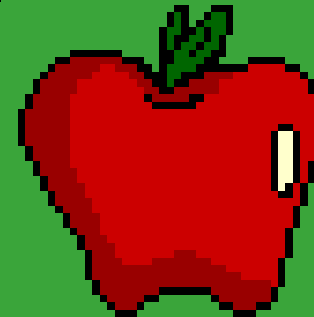
The Brazilian government encouraged interregional migration by

- A) making Rio de Janeiro and Sao Paulo more attractive.
- B) dictating optimal locations for factories.
- C) clearing the rain forest for agricultural activities in the interior.
- D) moving the capital to Brasilia.



The Brazilian government encouraged interregional migration by

D) moving the capital to Brasilia.



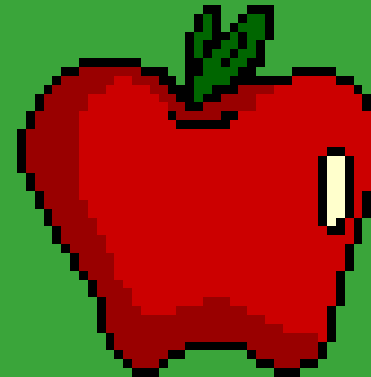
An example of a government limiting migration is

- A) the State of Assam.
- B) Bangladesh.
- C) Mexico.
- D) the United Kingdom.



An example of a government limiting migration is

A) the State of Assam.



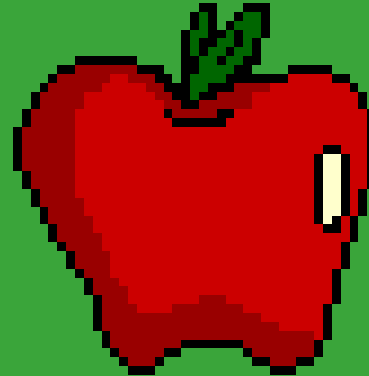
The most prominent type of intraregional migration in the world is

- A) rural to urban.
- B) region to region.
- C) urban to rural.
- D) city to city.



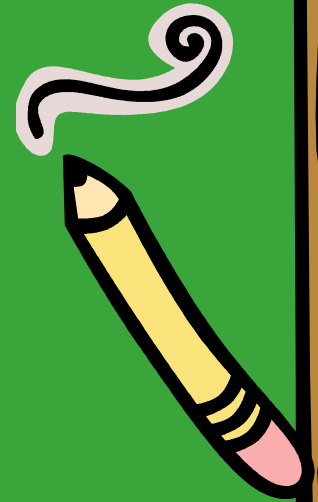
The most prominent type of intraregional migration in the world is

A) rural to urban.



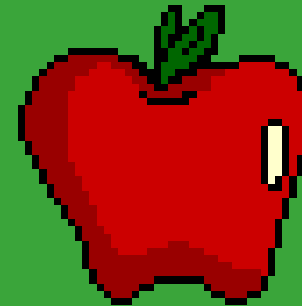
Many of the first Europeans to settle in Australia migrated to serve jail sentences which is the combination of which push and pull factors?

- A) cultural push, economic pull
- B) environmental push, cultural pull
- C) economic push, political pull
- D) political push, environmental pull



Many of the first Europeans to settle in Australia migrated to serve jail sentences which is the combination of which push and pull factors?

A) cultural push, economic pull



Are You Smarter
Than a APHG
Student?

