



Seminole High School
2701 Ridgewood Avenue
Sanford, Florida, 32771
Dr. Phi Yoba, Art Director, Fine Arts Chairman

AP 2D ART & Design / AP Drawing SUMMER ASSIGNMENTS 2021- 22

If you have questions, I can be contacted throughout the summer at phi_yoba@scps.k12.fl.us

You will need a usb flash drive, a micron ink pen, sketchbook (any size), and your own set of paint brushes the first day of school.

Complete any 5 over the summer. Do as many as you can. The more you do, the less work you will have to complete later. The size of the artwork is not as important as the QUALITY of the artworks. A general size is 11" X 14". Do not go larger than this. ***Each work should be original and not plagiarized.***

Bring your art to class on the first day of school in August. On the back, put your name and the assignment number from the list that your artwork matches. These artworks will count as your first four grades. Therefore, take it seriously! Please do not wait until the last few days before school starts to work on these, it will show in the final work, and that will reflect in your grade. These artworks should be executed with skill and demonstrate excellent craftsmanship. Each artwork should contain the 3 "C"s": COMPOSITION, CONTRAST, & CONTENT. You may complete additional artworks (extra credit will be given) beyond the required two if you would like.

Assignment #1 "Reflective Surfaces"

Create a drawing that utilizes strong contrast. Use media of choice. All objects should be from direct observation not a photograph. Ideas... MIRRORS, TOASTERS, GLASSES, CARS, SHINY METAL OBJECTS, REFLECTIONS IN WATER, ETC. BE CREATIVE WITH YOUR SURFACES AND THE REFLECTIONS THAT You Choose.



Assignment # 2 Figure Drawing

Draw a person's head and face using exaggeration to communicate emotion. First use a pencil to make a general drawing. Note the shapes and planes of the face and how they fit together. Then continue over the drawing with a darker media. Utilize strong contrast to greatly exaggerate the areas you want to emphasize. Work from a live model, not a photograph. Use yourself, looking in the mirror, if you don't have a friend or family member you can use.



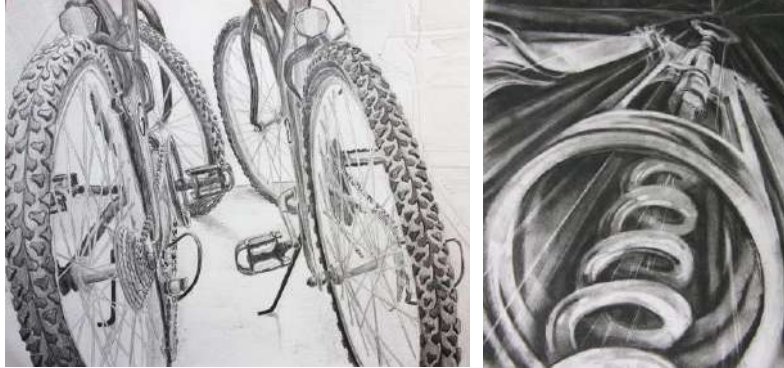
Assignment #3 "Three Eggs"

Place three eggs or more on a towel or cloth, to create an interesting composition and draw it in pencil. Pay attention to the smoothness of the eggs against the rough quality of the material. Concentrate on the forms of the eggs and uses strong values. Use graphite. (Ebony Pencil or Drawing Pencils)



Assignment #4 “Mechanical or Tool Composition”

Draw a detailed drawing of a mechanical object or tool in pencil or colored pencil. Some ideas include bicycle, hammer, screwdriver, scissors, cork screw, etc. Crop it down using a view-finder so that part of it will go off the paper. Use graphite or colored pencil, or both together.



Assignment #5 “Impressionistic Landscape”

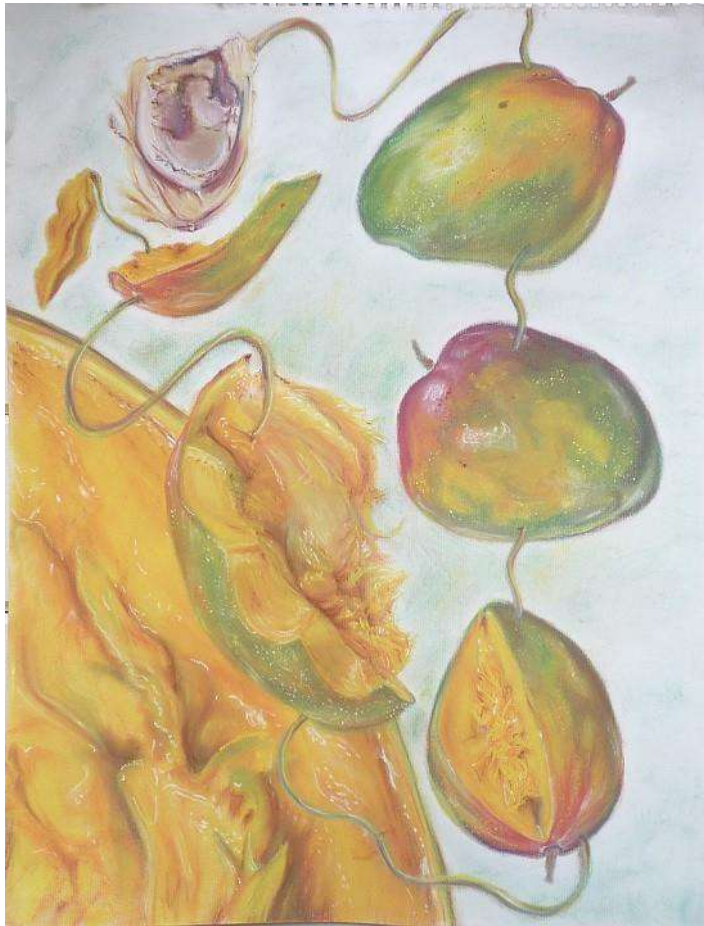
Create an artwork that depicts a landscape in the style of Impressionism. Look at the following artists for inspiration: Monet, Manet, Cassat, Degas, Renoir, and Cezanne. Working from direct observation is best... if you do work from a photograph, use your own photo, not a published photo. Use the art medium of your choice. The Impressionism style considers how lights and shadows move across objects and the impression (feeling of emotions) conveyed through bright colors.



Assignment #6

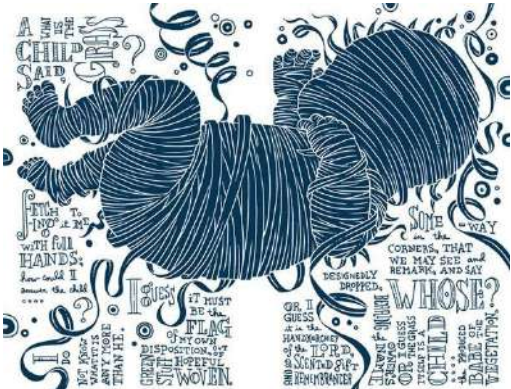
"Dissection or Metamorphosis"

Create a study based upon an object that you have taken apart. Arrange the parts on a surface with other objects related or not related and study the TEXTURAL qualities or the changing form one object into another. Some ideas would be a mechanical object, a child's toy, ingredients for a cooking recipe, a few apples or other fruit cut apart...anything where you are creating a still composition out of something that has been dissected or disassembled. This does not have to be boring! PUT YOUR OWN SPIN ON IT!!!



Assignment #7

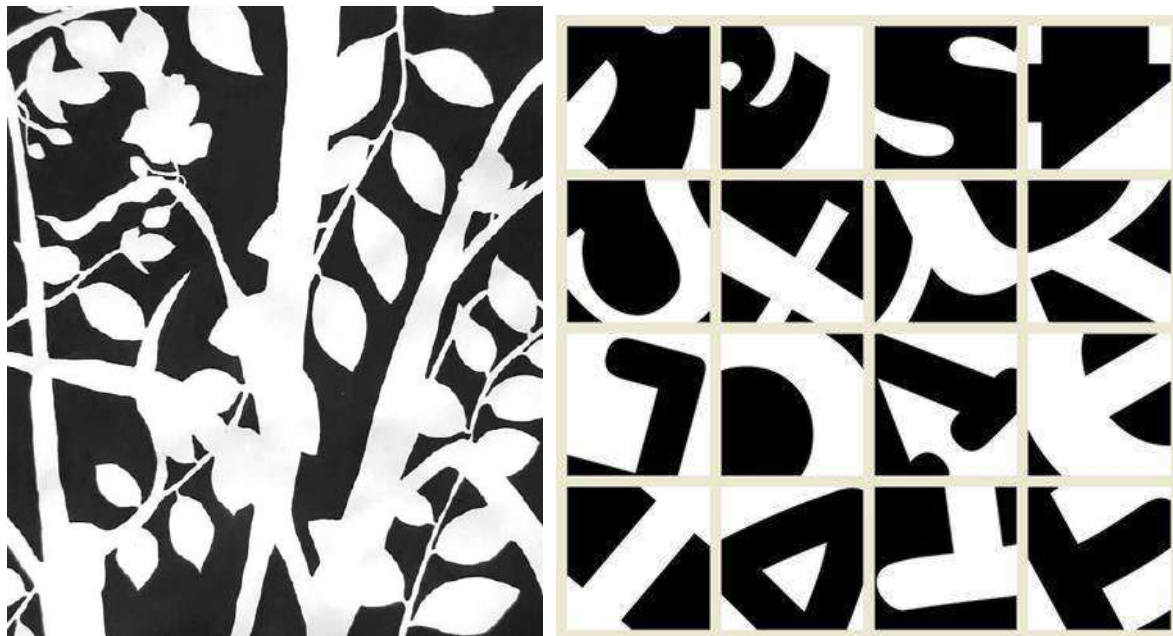
Illustrate a song of your choice. Use Topography in the artwork to help stress your point of view if you like.



Assignment #8 “Positive & Negative Plants Shapes or Positive & Negative Letters”

Organic (biomorphic) shapes repeated with variation positive / negative space reversals on 11” x 17” paper. (Choose any of these media: ultra-fine sharpie marker and large sharpie marker on heavy weight hot press smooth paper, black and white acrylic paint on paper. Cut white and black paper can be used as well.

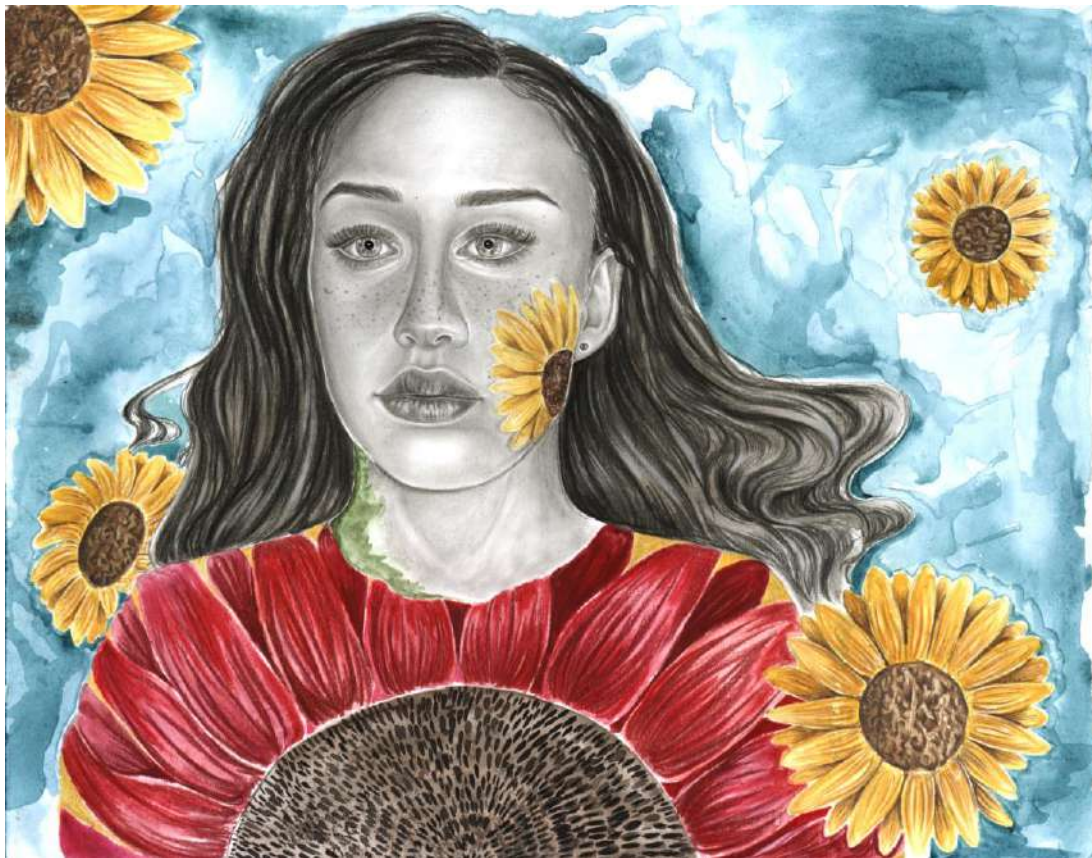
Goals: A white complex positive shape that is derived from tree or plant forms (repeated with enough variation for interest) on a black background OR THE USE OF TYPOGRAPHY LETTERS. You may sometimes flip the positive / negative space. There should be approximately equal amounts of positive and negative space. Make several negative space drawings of plants or trees. Choose an interesting plant. Pay attention to how some shapes can reverse out of others. Do NOT oversimplify because your image may end up looking too simple. If you Use Letters, consider a font group that you like.



Assignment #9 “Surrealistic Me ”

Create a work of art that utilizes a selfie image drawn from your phone and incorporate other elements, images, plants, animals, natural elements to create an out of boy experience surrealist work of art.

You may use the media of your choice.



Assignment #10 "My Obsession"

Create a work of art 11" x 14" based upon your own personal obsession. Draw in pencil using the 10 scale value scale to have rich blacks, greys, and whites in your final work.

